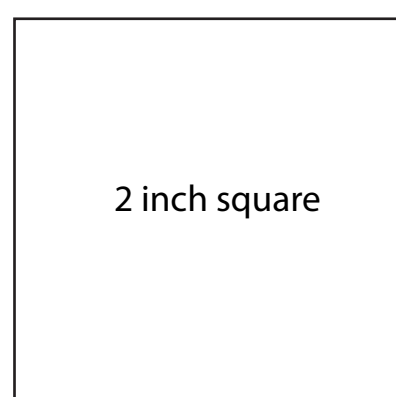
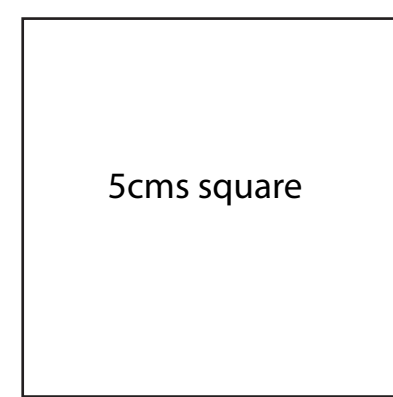
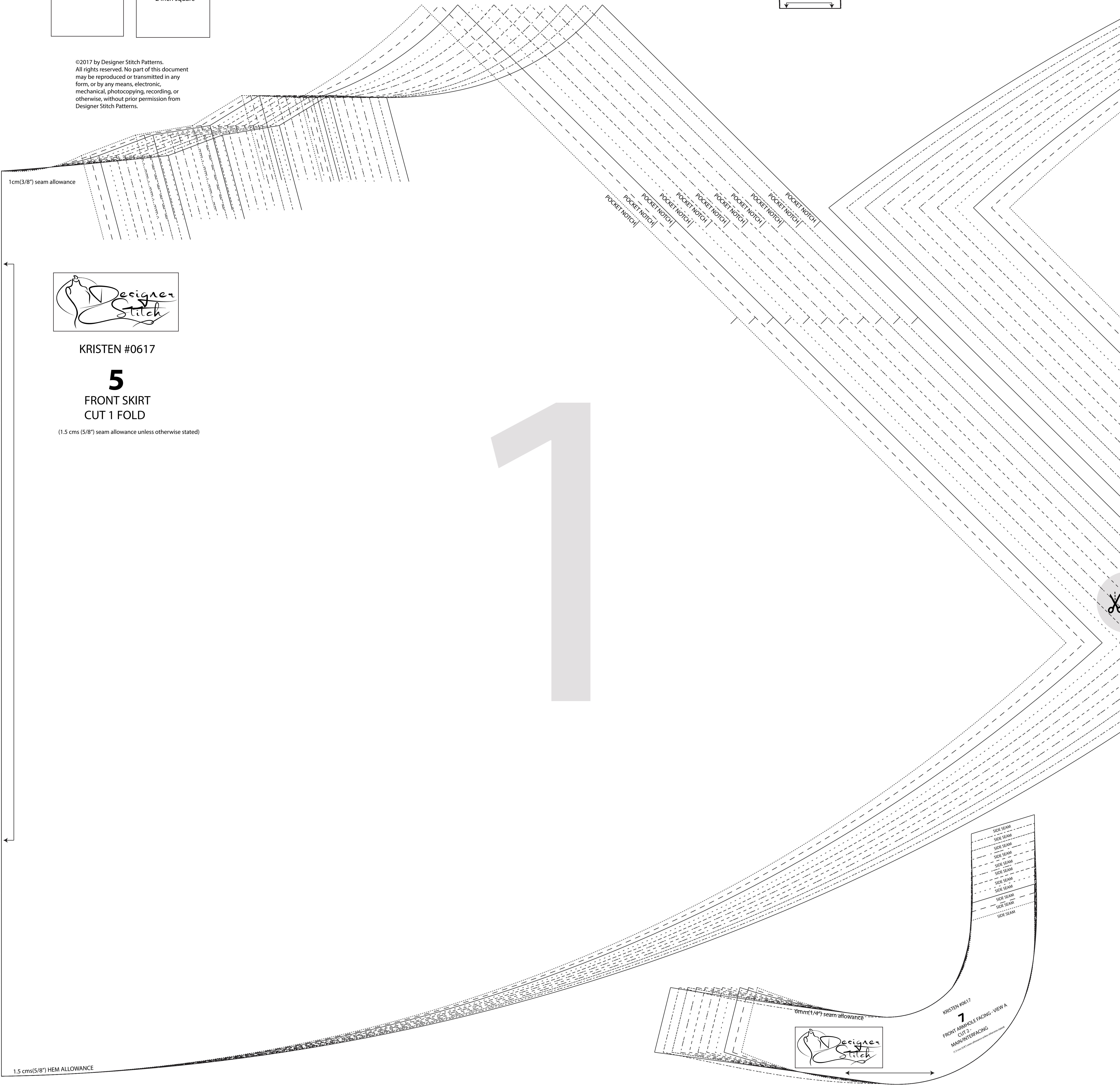
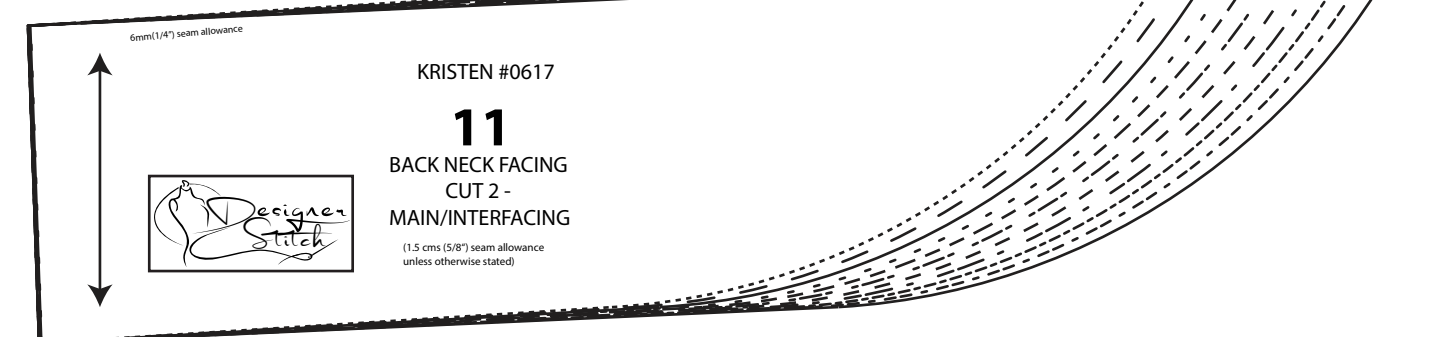
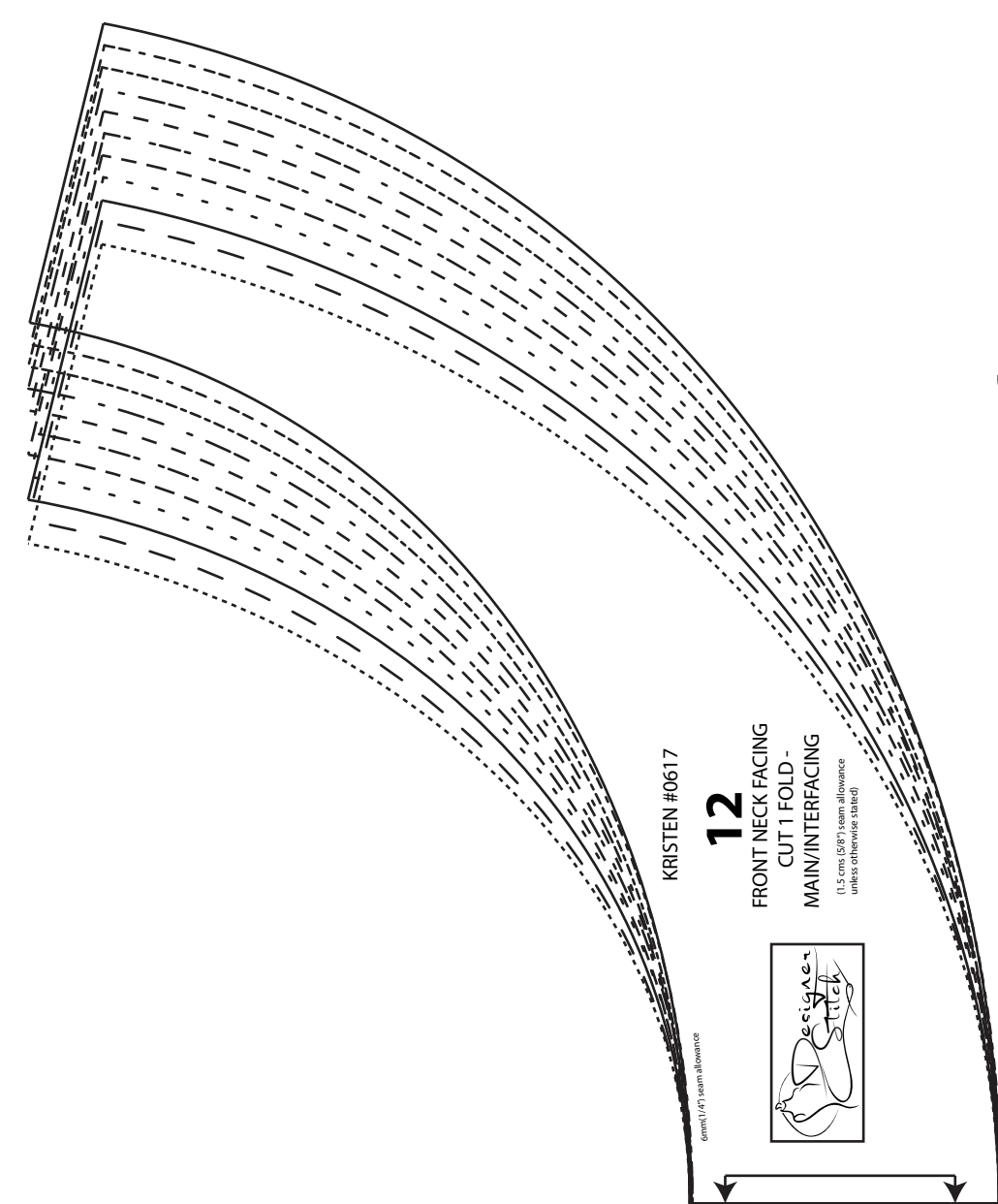
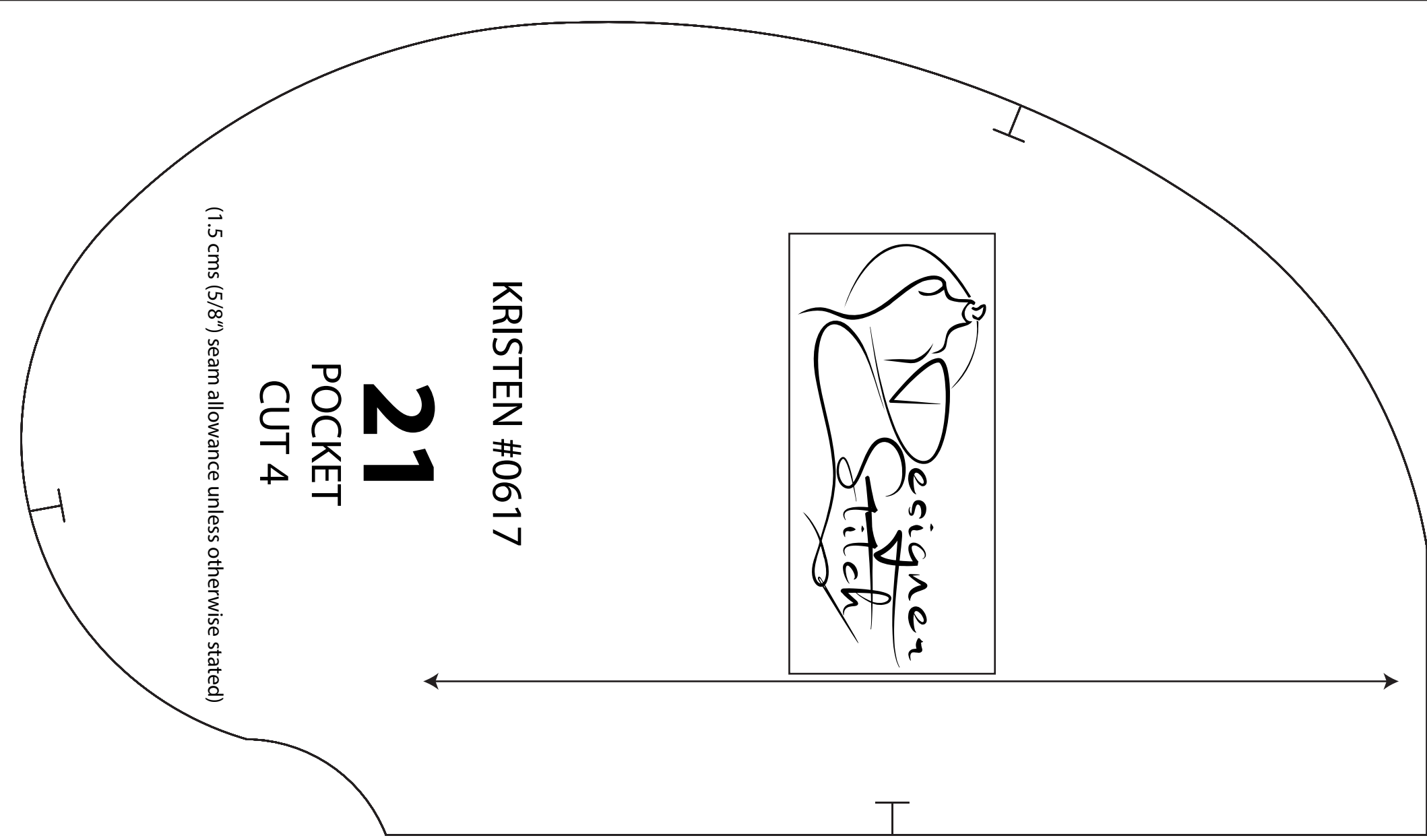




KRISTEN #0617



©2017 by Designer Stitch Patterns. All rights reserved. No part of this document may be reproduced or transmitted in any form, or by any means, electronic, mechanical, photocopying, recording, or otherwise, without prior permission from Designer Stitch Patterns.

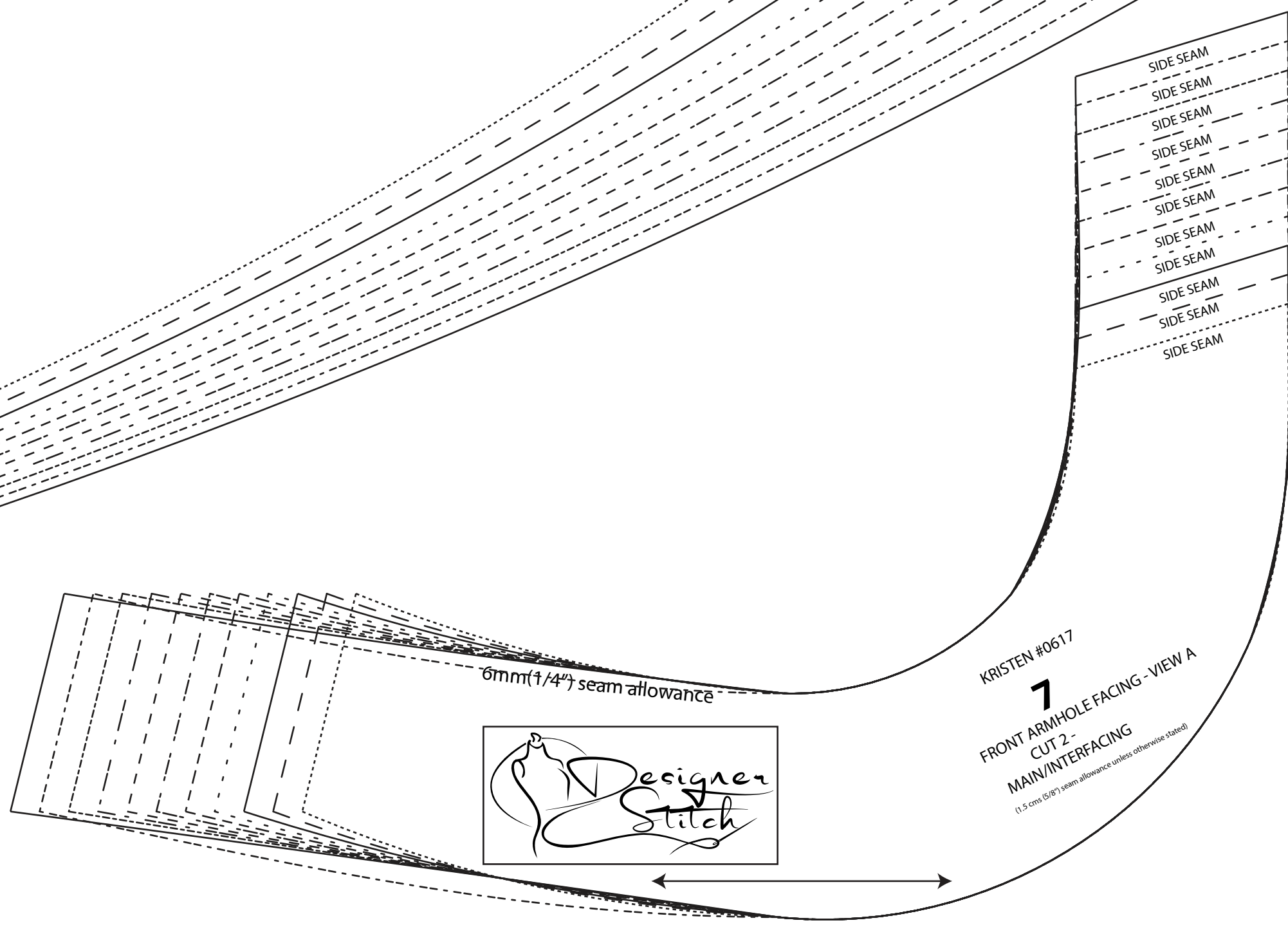


KRISTEN #0617

5

FRONT SKIRT CUT 1 FOLD

(1.5 cms (5/8") seam allowance unless otherwise stated)



KRISTEN #0617

9

CENTRE FRONT RUFFLE CUT 1

(6mm (1/4") seam allowance unless otherwise stated)



KRISTEN #0617

8

ARMHOLE RUFFLE CUT 2

(6mm (1/4") seam allowance unless otherwise stated)



KRISTEN #0617

10

NECK RUFFLE CUT 1

(6mm (1/4") seam allowance unless otherwise stated)

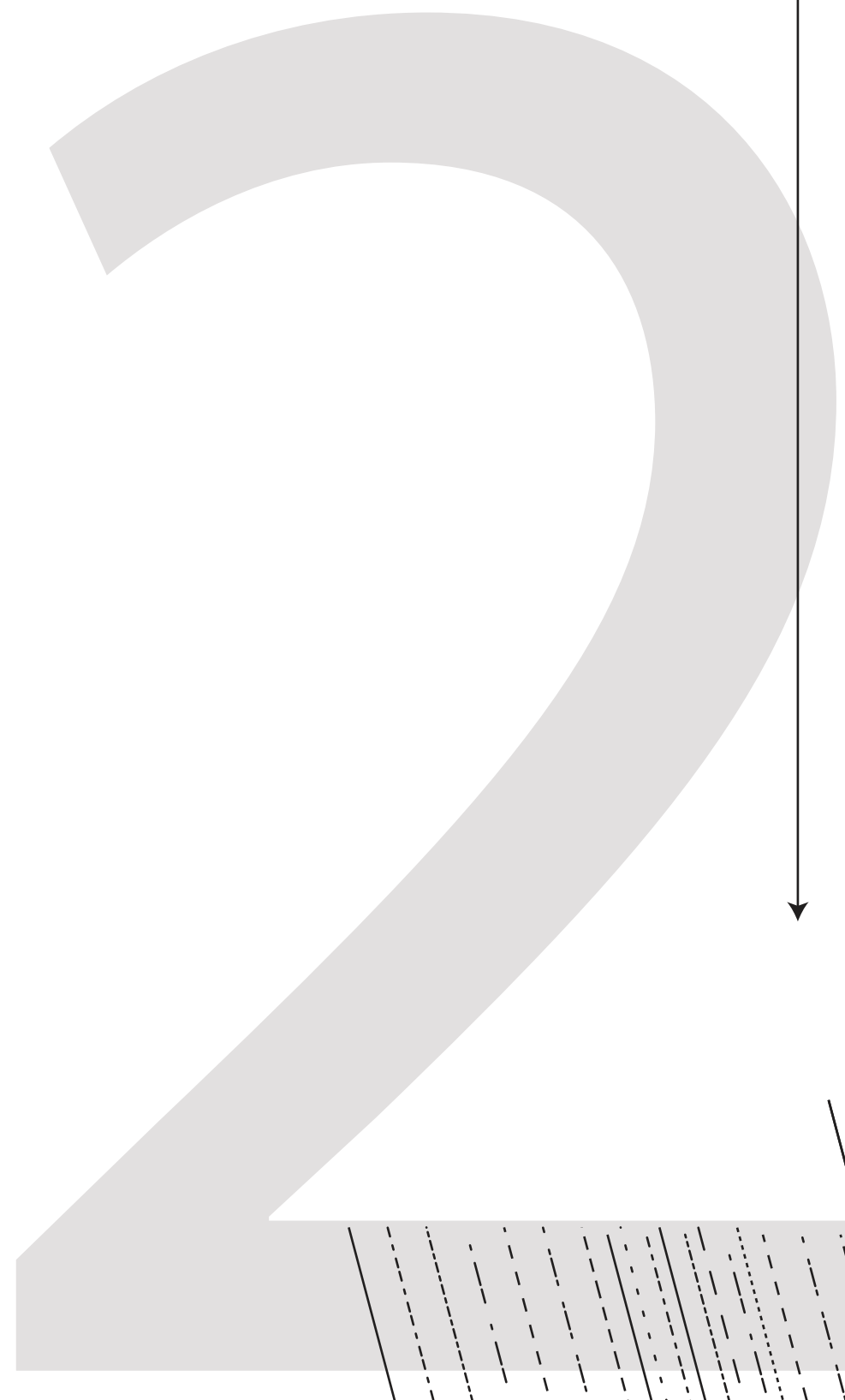
1.5 cms (5/8") HEM ALLOWANCE

(1.5 cms (5/8") seam allowance unless otherwise stated)

4
KRISTEN #0617
BACK SKIRT
CUT 2



1cm (3/8") seam allowance



POCKET NOTCH

POCKET NOTCH

POCKET NOTCH

POCKET NOTCH

POCKET NOTCH

POCKET NOTCH

POCKET NOTCH

POCKET NOTCH

POCKET NOTCH

POCKET NOTCH

POCKET NOTCH

POCKET NOTCH

POCKET NOTCH

POCKET NOTCH

POCKET NOTCH

POCKET NOTCH

POCKET NOTCH

POCKET NOTCH

POCKET NOTCH

POCKET NOTCH

POCKET NOTCH

POCKET NOTCH

POCKET NOTCH

POCKET NOTCH

POCKET NOTCH

POCKET NOTCH

POCKET NOTCH

POCKET NOTCH

POCKET NOTCH

POCKET NOTCH

POCKET NOTCH

POCKET NOTCH

POCKET NOTCH

POCKET NOTCH

POCKET NOTCH

POCKET NOTCH

POCKET NOTCH

POCKET NOTCH

POCKET NOTCH

POCKET NOTCH

POCKET NOTCH

POCKET NOTCH

POCKET NOTCH

POCKET NOTCH

POCKET NOTCH

POCKET NOTCH

POCKET NOTCH

POCKET NOTCH

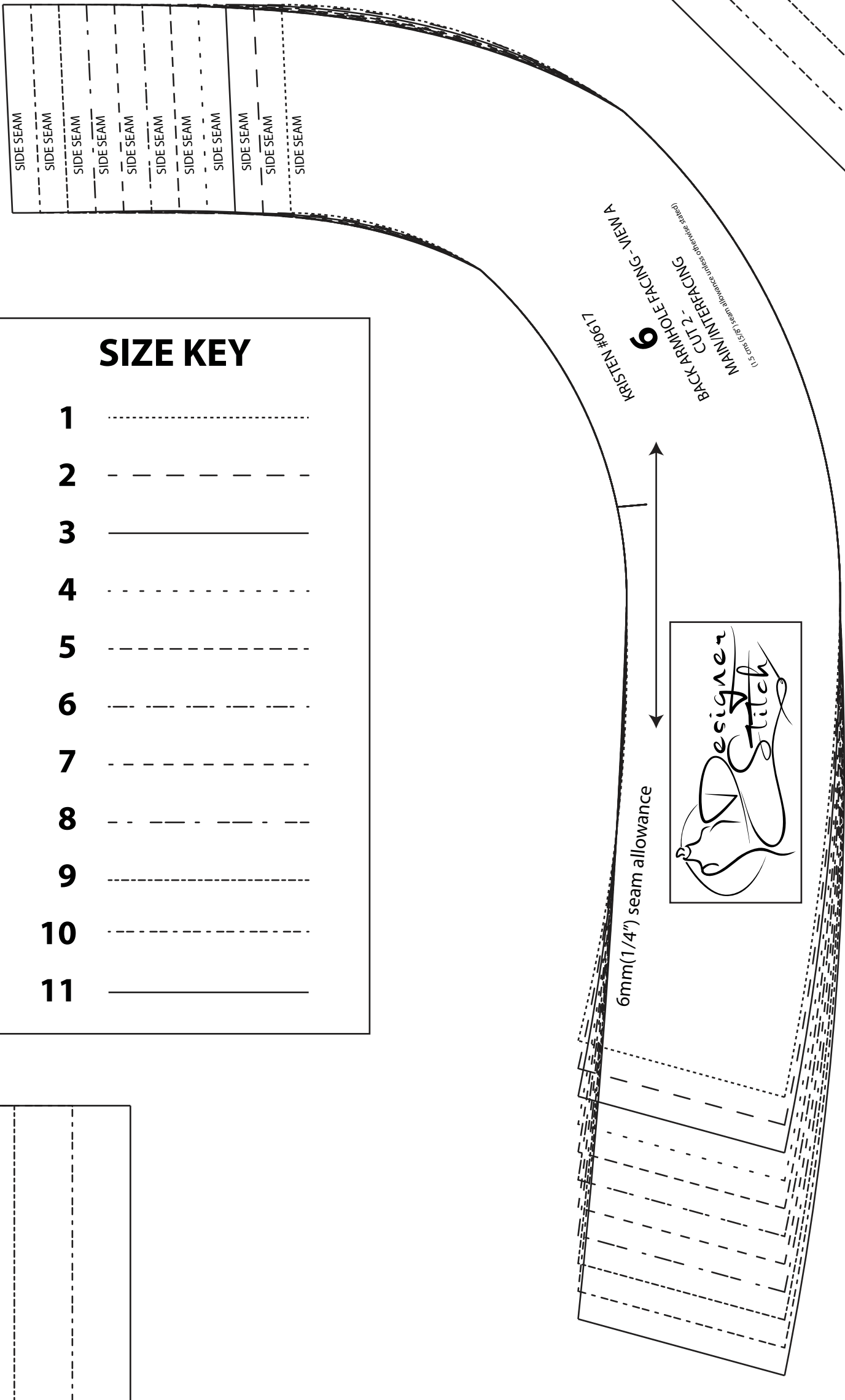
POCKET NOTCH

POCKET NOTCH

POCKET NOTCH

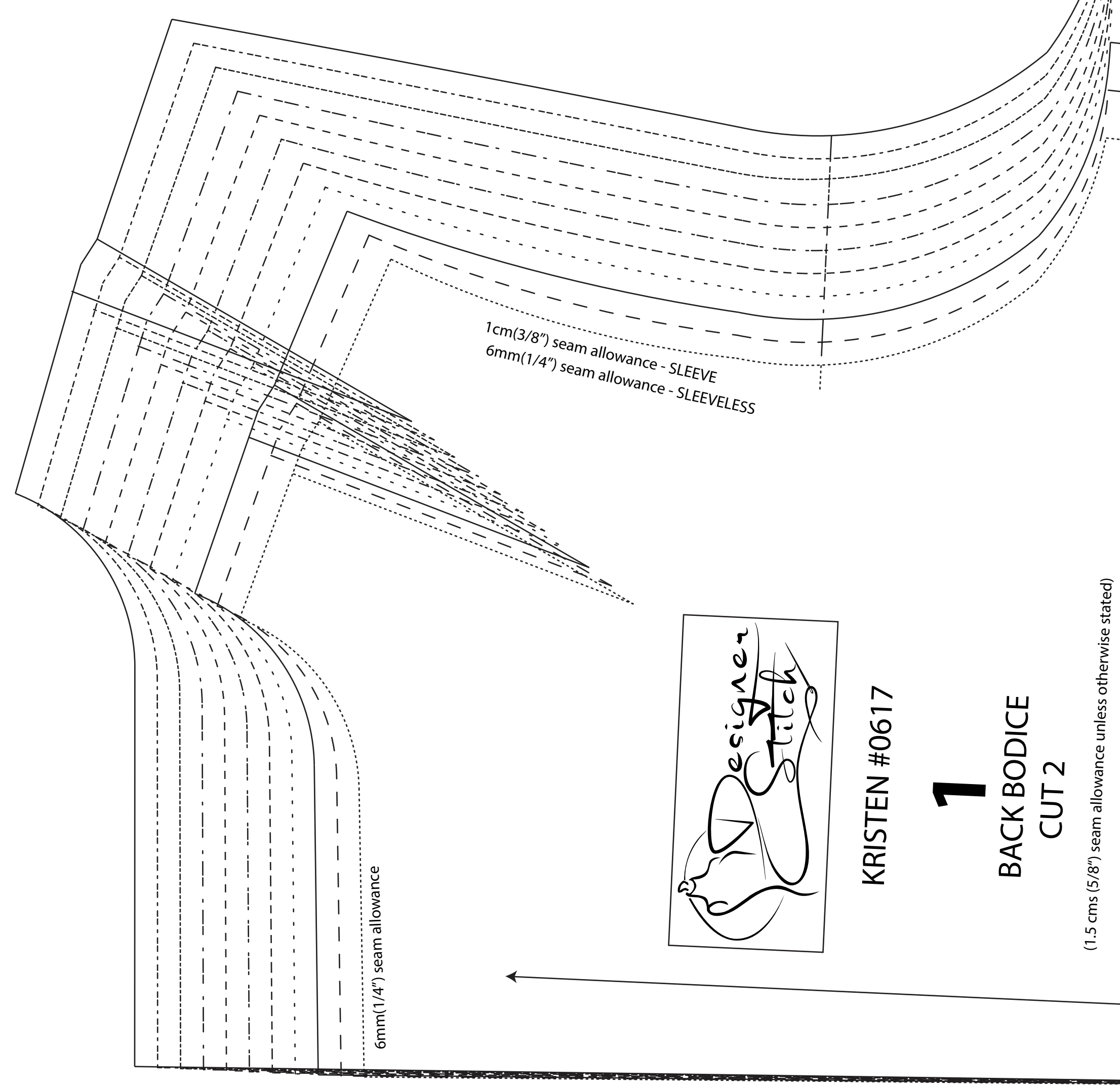
POCKET NOTCH

POCKET NOTCH



SIZE KEY

1
2
3
4
5
6
7
8
9
10
11



1cm (3/8") seam allowance - SLEEVE
6mm (1/4") seam allowance - SLEEVELESS

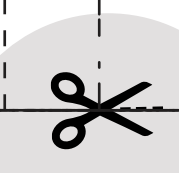


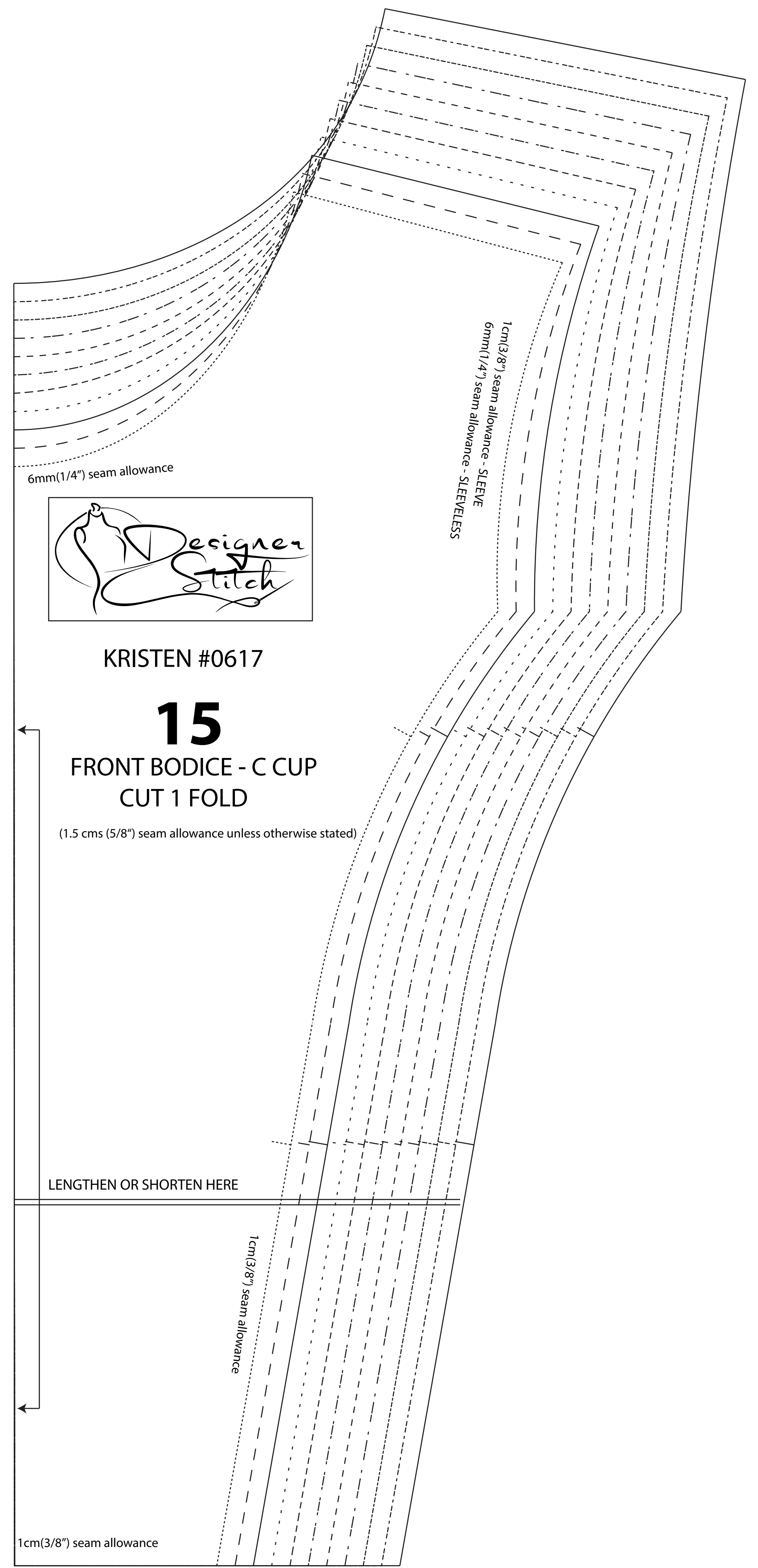
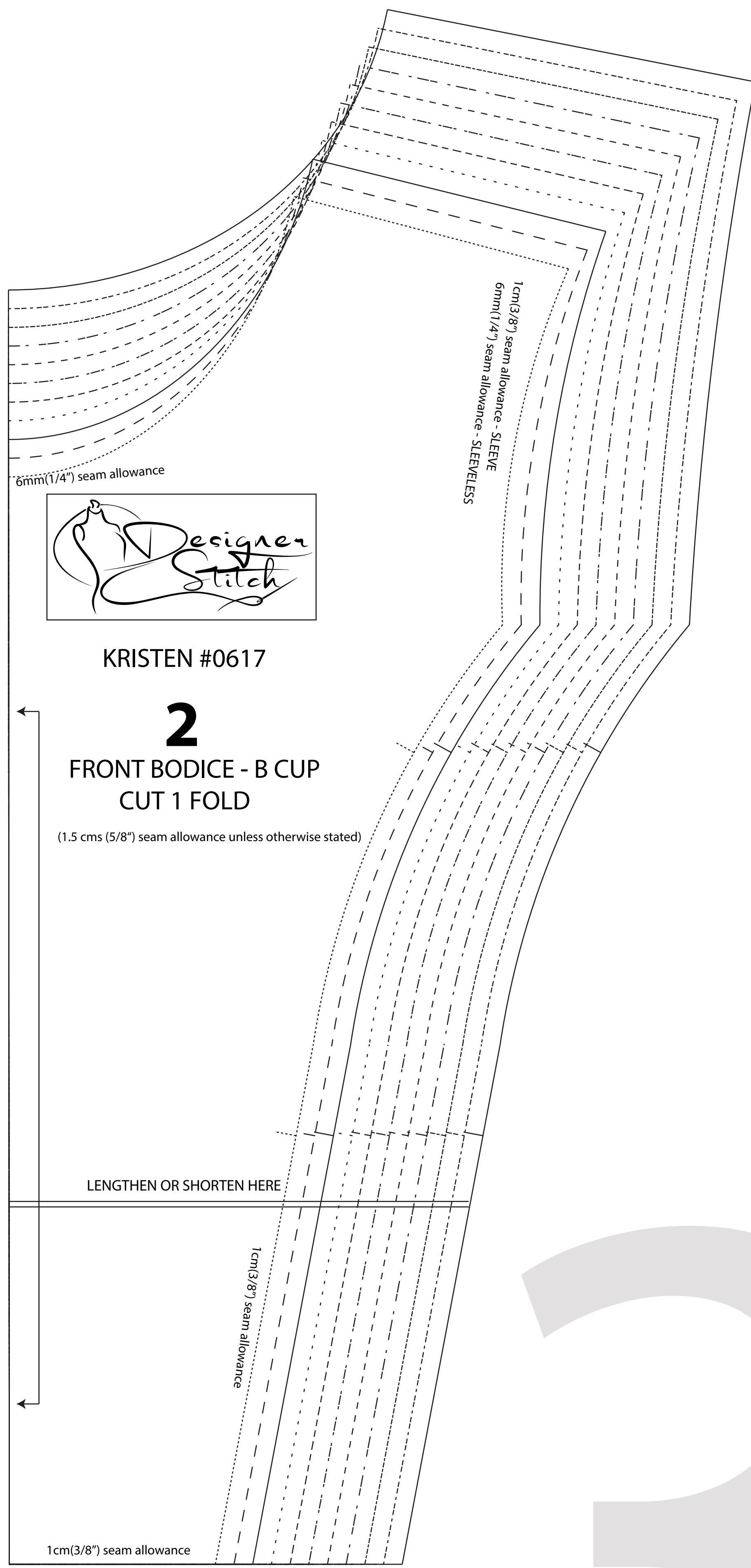
1
KRISTEN #0617
BACK BODICE
CUT 2

(1.5 cms (5/8") seam allowance unless otherwise stated)

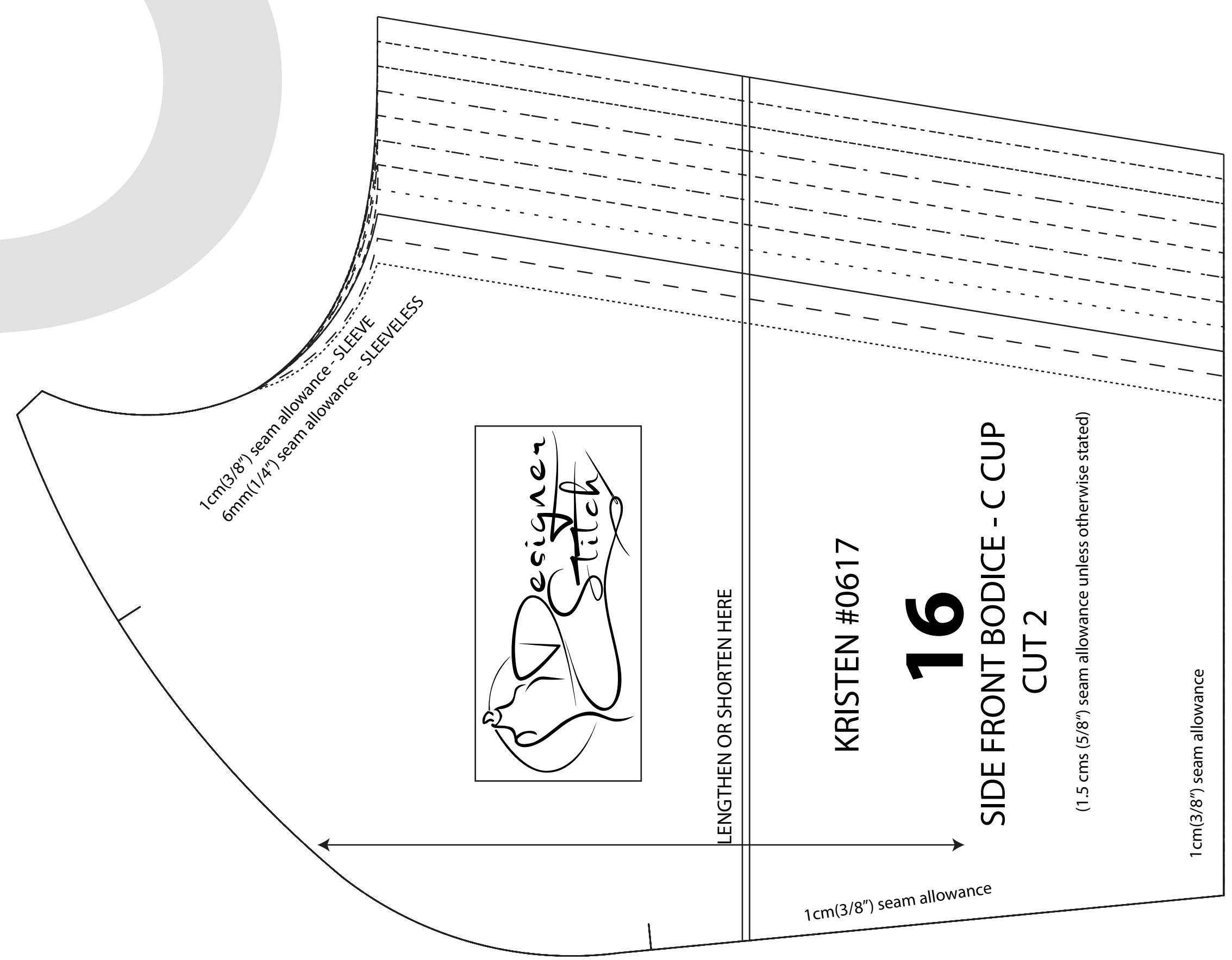
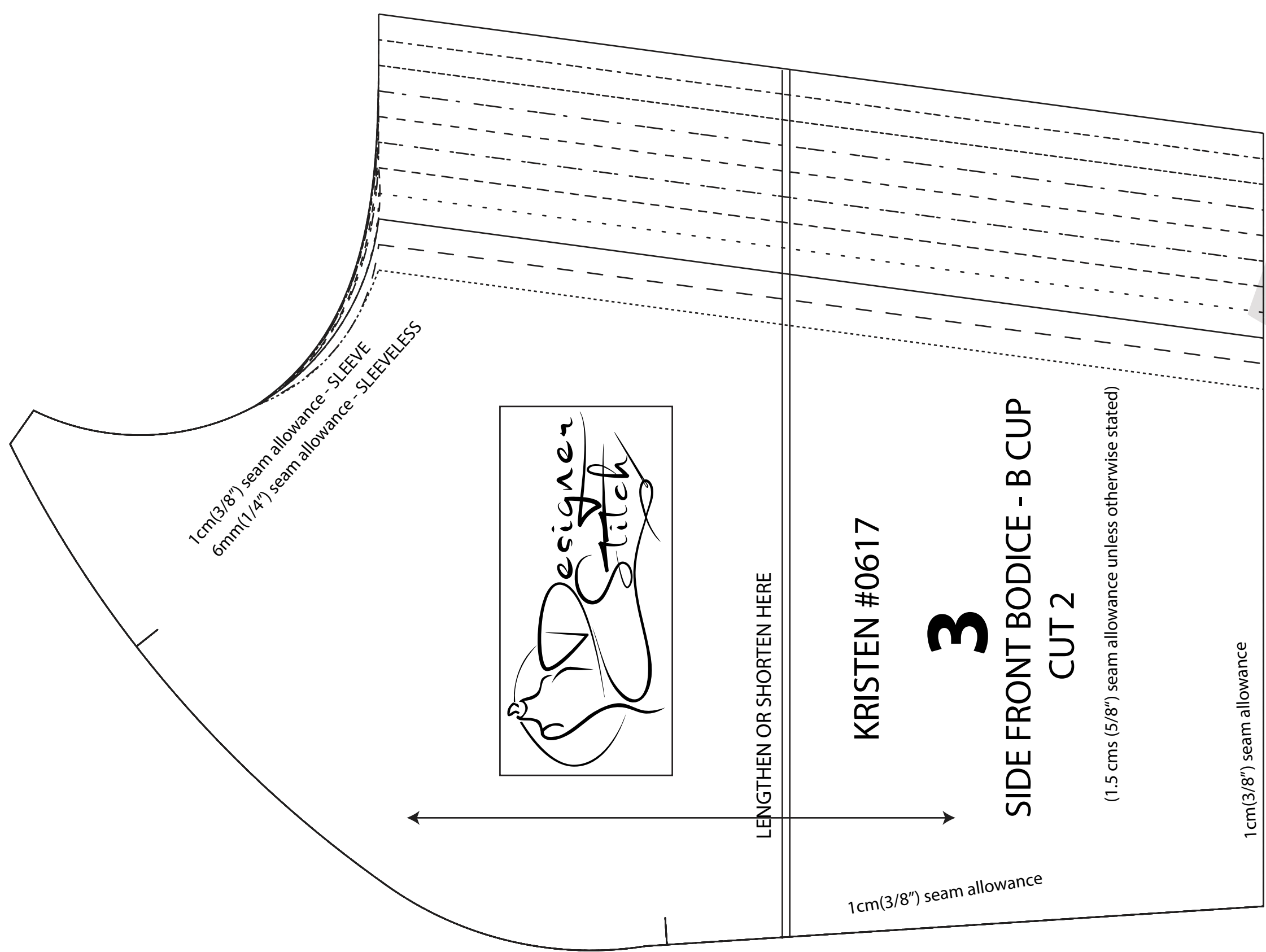
LENGTHEN OR SHORTEN HERE

1cm (3/8") seam allowance



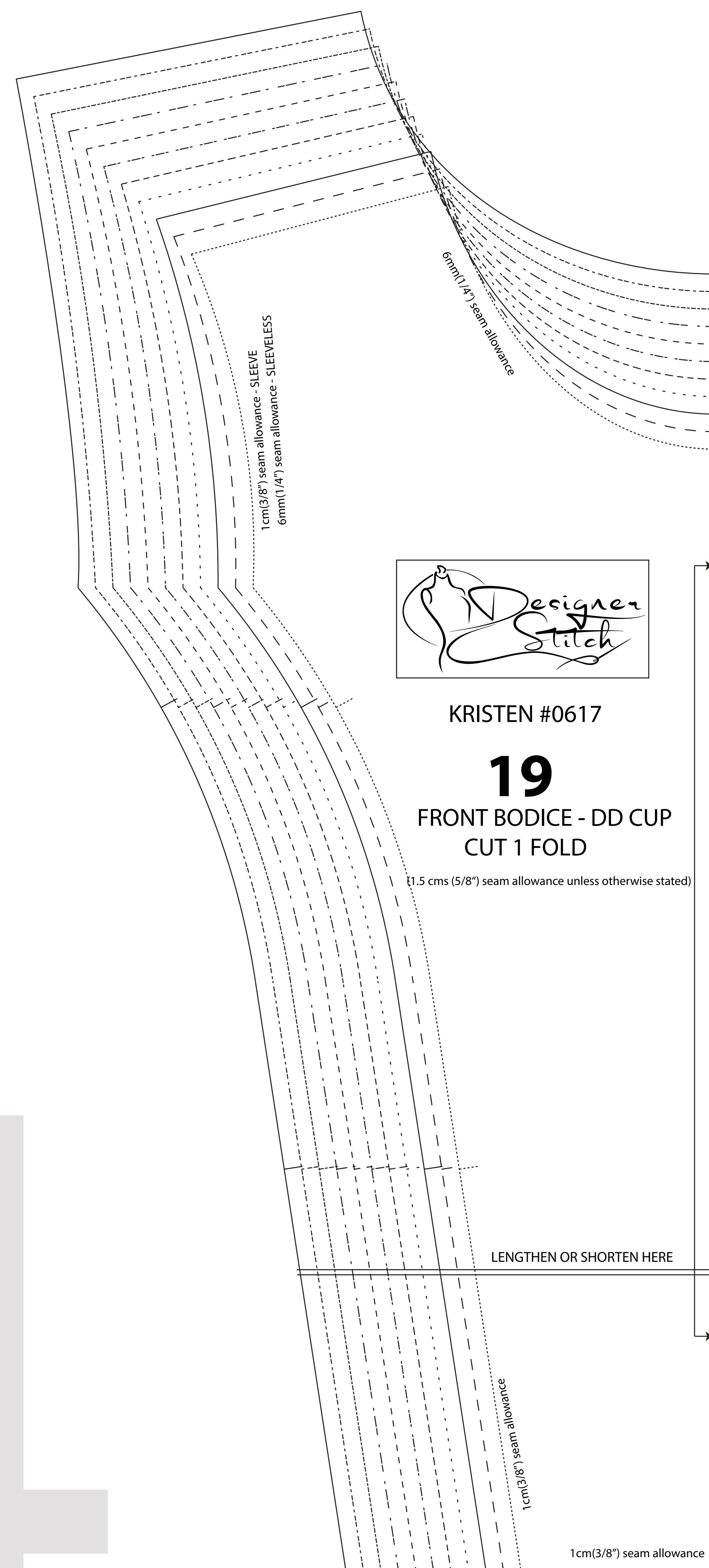
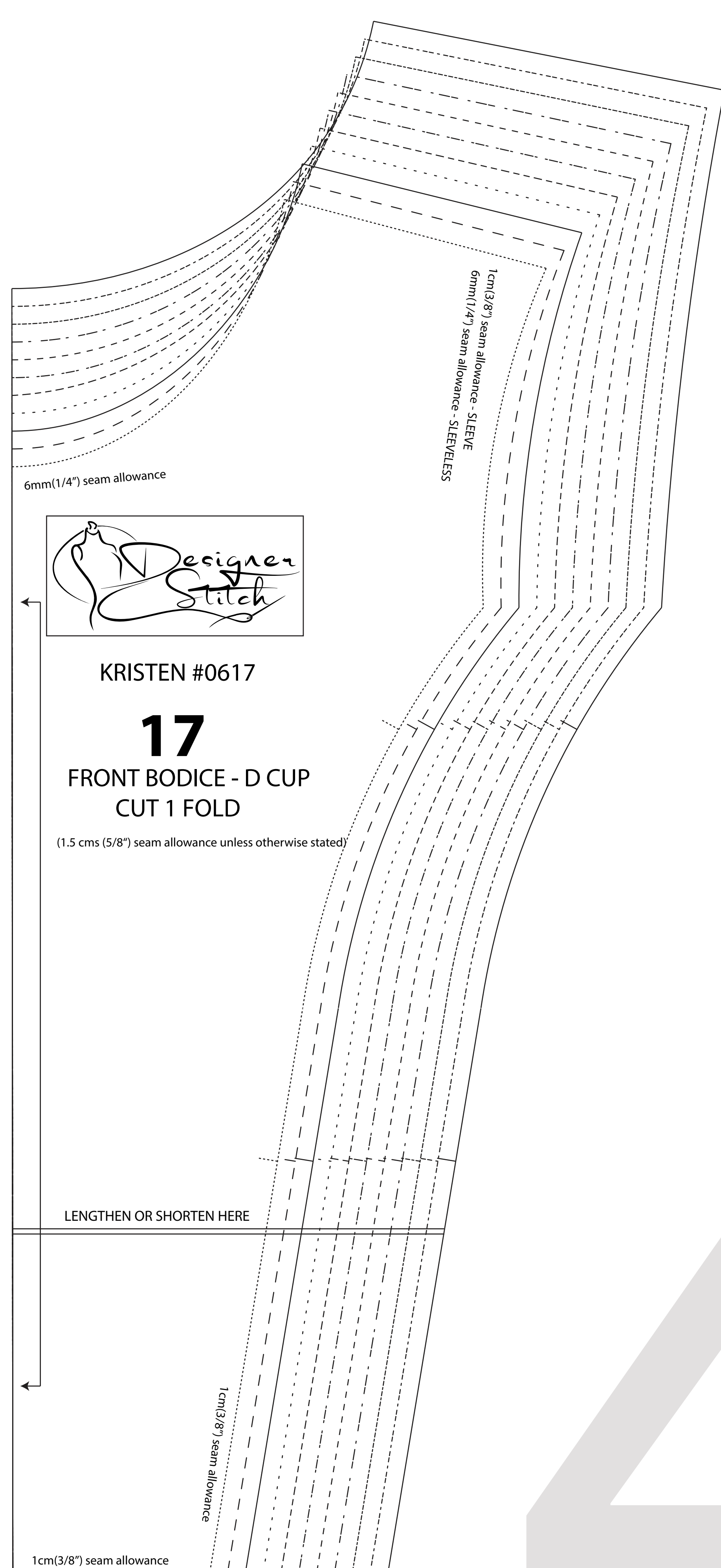


3

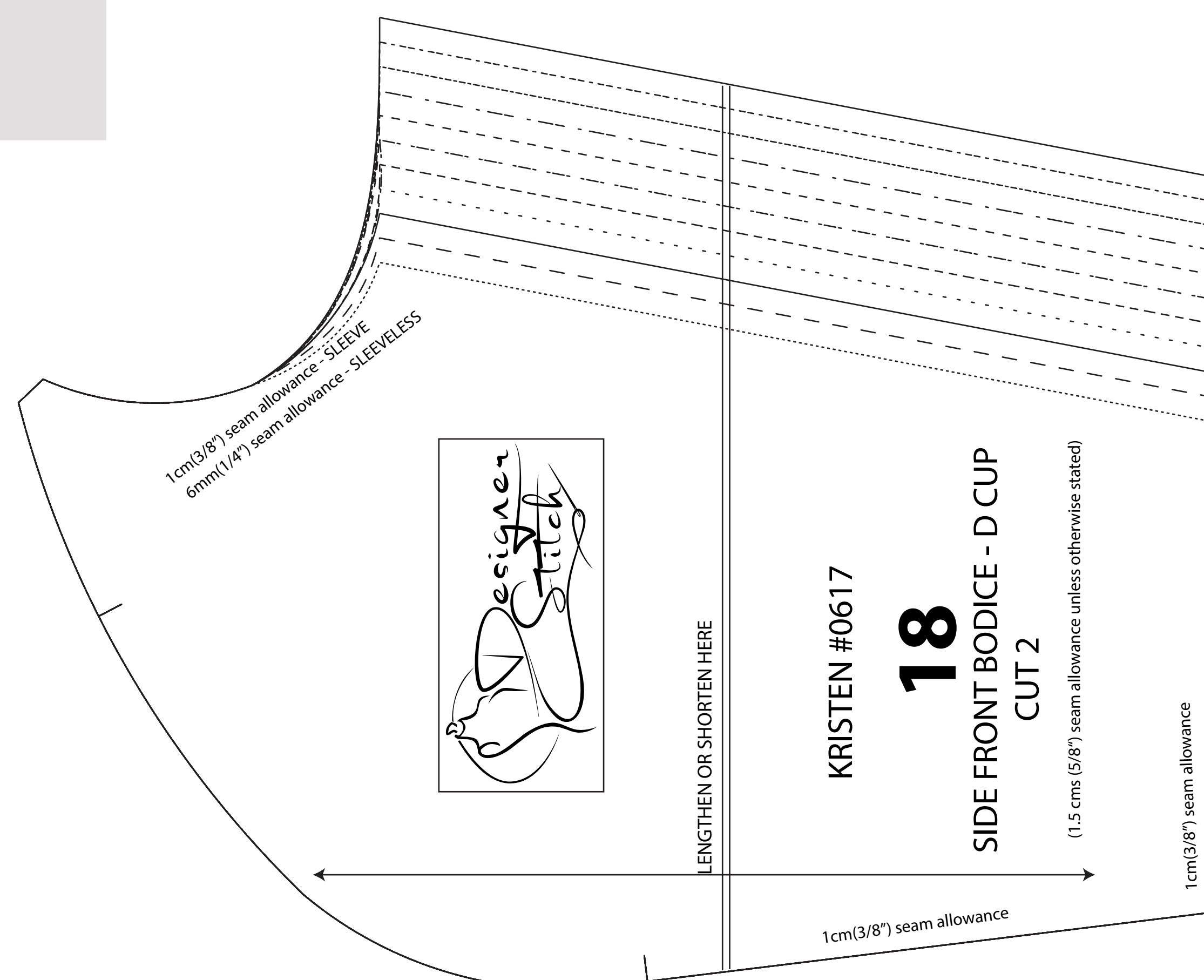
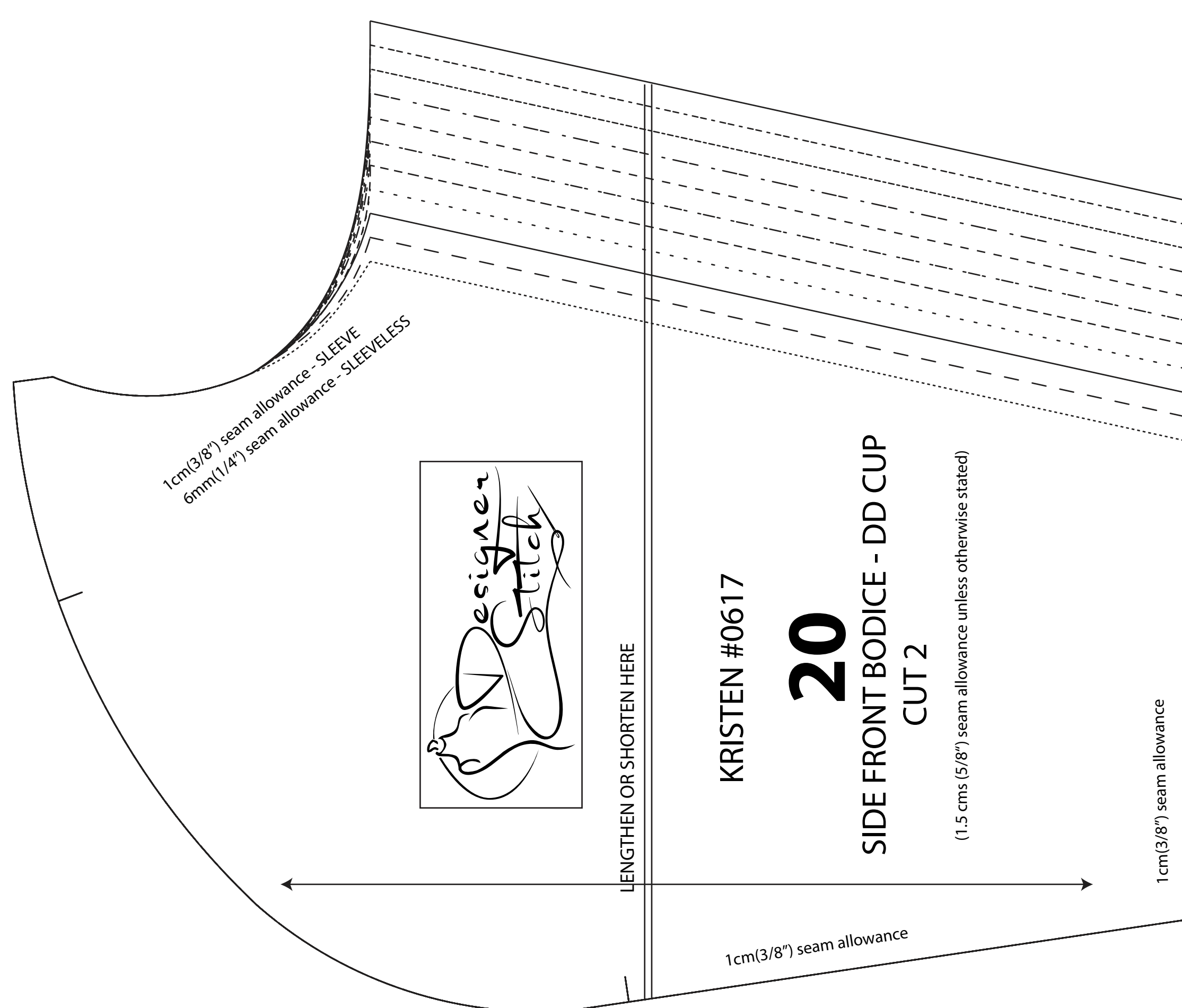


FRONT BODICE
SIDE FRONT
B AND C CUP





4



FRONT BODICE
SIDE FRONT
D AND DD CUP