



JOSE CAMI, BODYSUIT and SLIP DRESS #0721

5cms square

2 inch square



JOSE CAMI, BODYSUIT and SLIP DRESS #0721

**1** BACK CUT 1 FOLD (1.5 cms (5/8") seam allowance unless otherwise stated)

WAISTLINE

STRAIGHT GRAIN - CUT ON FOLD

BIAS GRAIN - CUT 1 ON FOLD

6mm (1/4") SEAM ALLOWANCE

CUT HERE BODY SUIT 6mm (1/4") SEAM ALLOWANCE

CUT HERE CAMI LENGTH 1.5 cms (5/8") HEM ALLOWANCE

CUT HERE 50CMS (22") LENGTH HEM ALLOWANCE 1.5 cms

CUT HERE 55CMS (22") LENGTH HEM ALLOWANCE 1.5 cms

CUT HERE SLIP LENGTH 1.5 cms (5/8") HEM ALLOWANCE

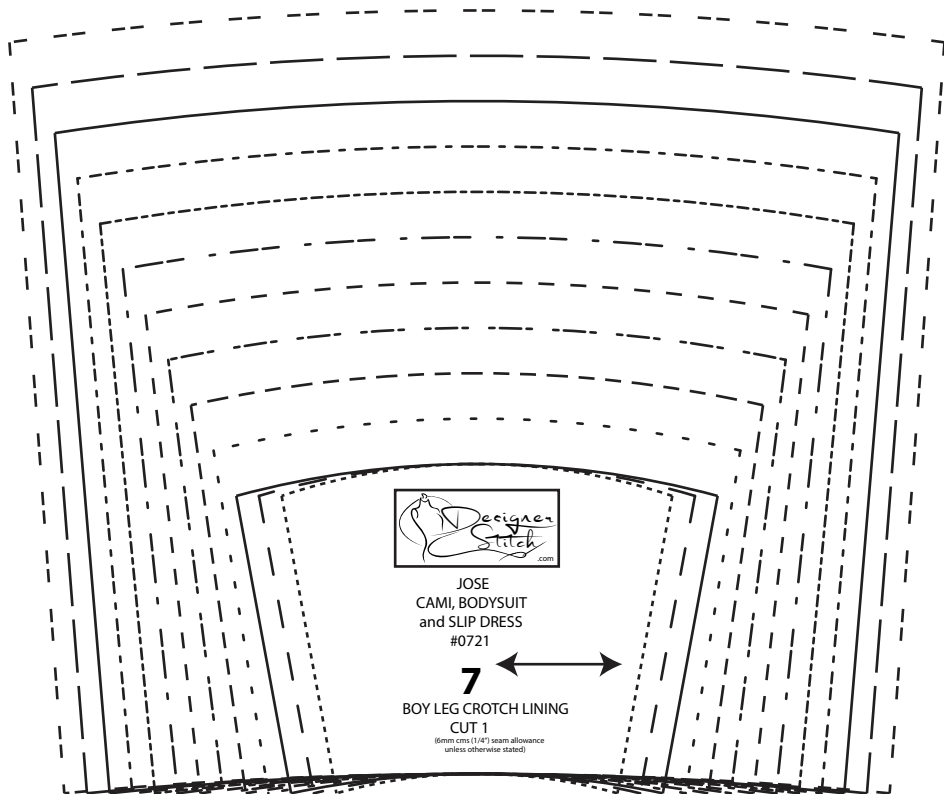
**4** BOY LEG BRIEFS CUT 2

NOTE: When cutting use straight line edge aligned to the notched edge of pattern pieces.

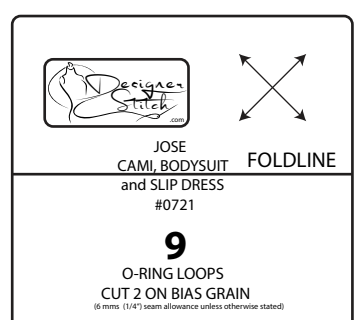


JOSE CAMI, BODYSUIT and SLIP DRESS #0721

**8** CROTCH EXTENSION - GEE/TUCKING CUT 2



**7** BOY LEGS (CROTCHING) CUT 1



**9** CROTCH EXTENSION CUT 2 ON BIAS GRAIN





