



JOSE CAMI, BODYSUIT and SLIP DRESS #0721

5cms square

2 inch square



JOSE CAMI, BODYSUIT and SLIP DRESS #0721

1 BACK CUT 1 FOLD (1.5 cms (5/8") seam allowance unless otherwise stated)

WAISTLINE

STRAIGHT GRAIN - CUT ON FOLD

BIAS GRAIN - CUT ON FOLD

6mm (1/4") SEAM ALLOWANCE

CUT HERE BODY SUIT 6mm (1/4") SEAM ALLOWANCE

CUT HERE CAMI LENGTH. 1.5 cms (5/8") HEM ALLOWANCE

CUT HERE 50CMS (22") LENGTH HEM ALLOWANCE 1.5 cms

CUT HERE 55CMS (22") LENGTH HEM ALLOWANCE 1.5 cms

CUT HERE SLIP LENGTH. 1.5 cms (5/8") HEM ALLOWANCE

JOSE CAMI, BODYSUIT and SLIP DRESS #0721

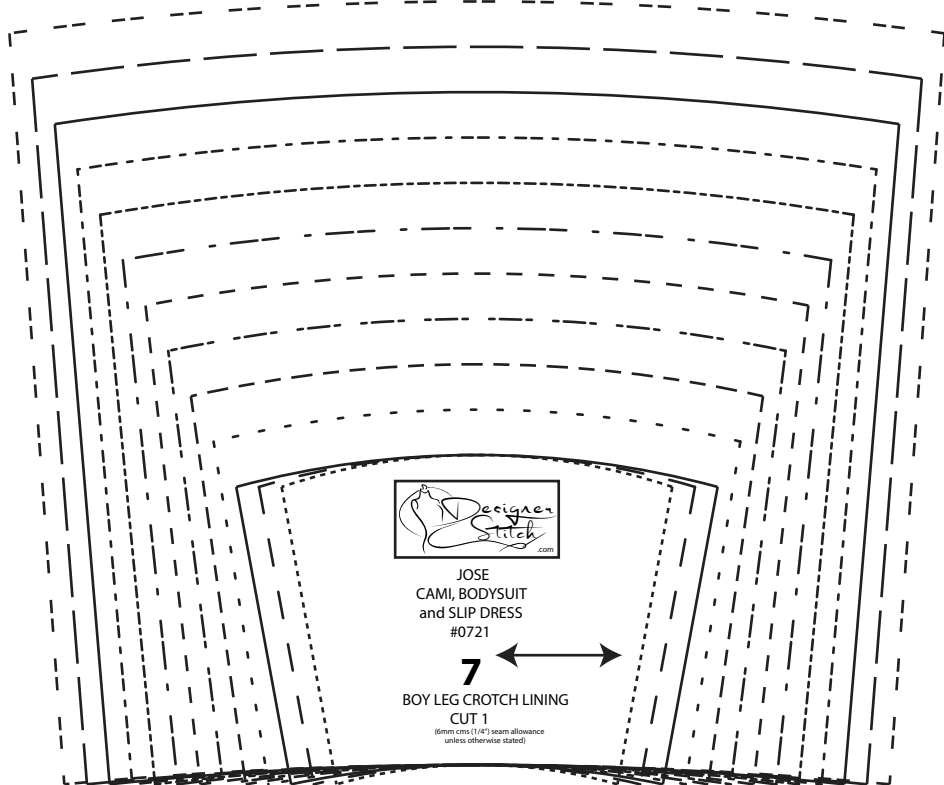
4 BOY LEG BRIEFS CUT 2

NOTE: When cutting use straight line edge aligned to the notched edge of pattern pieces.

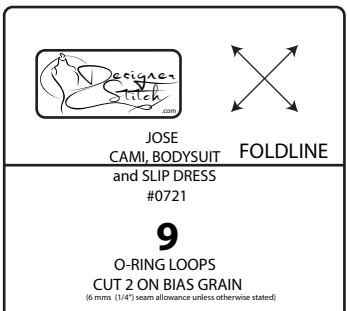


JOSE CAMI, BODYSUIT and SLIP DRESS #0721

8 CROTCH EXTENSION - GEE/TUCKING CUT 2

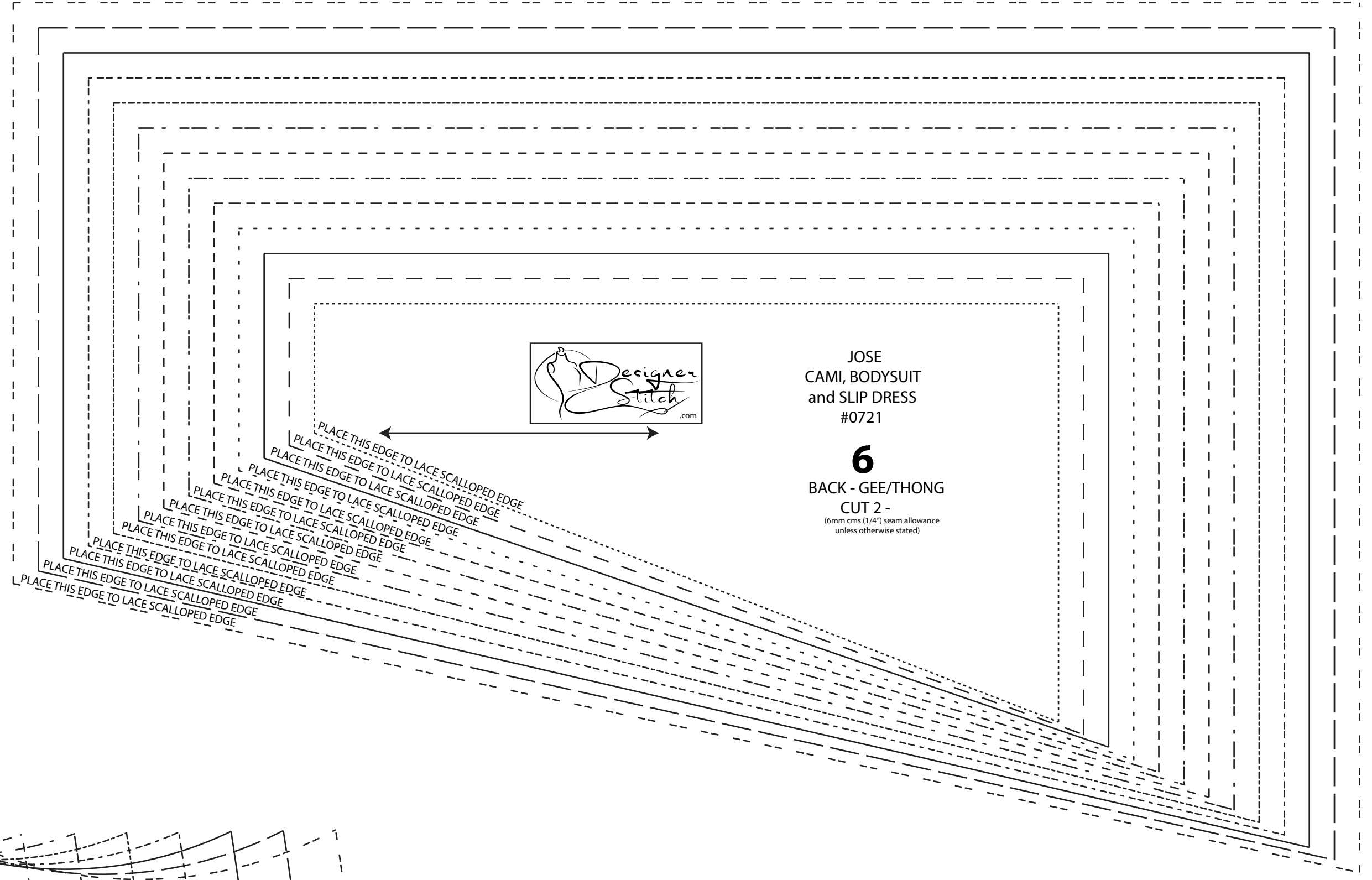
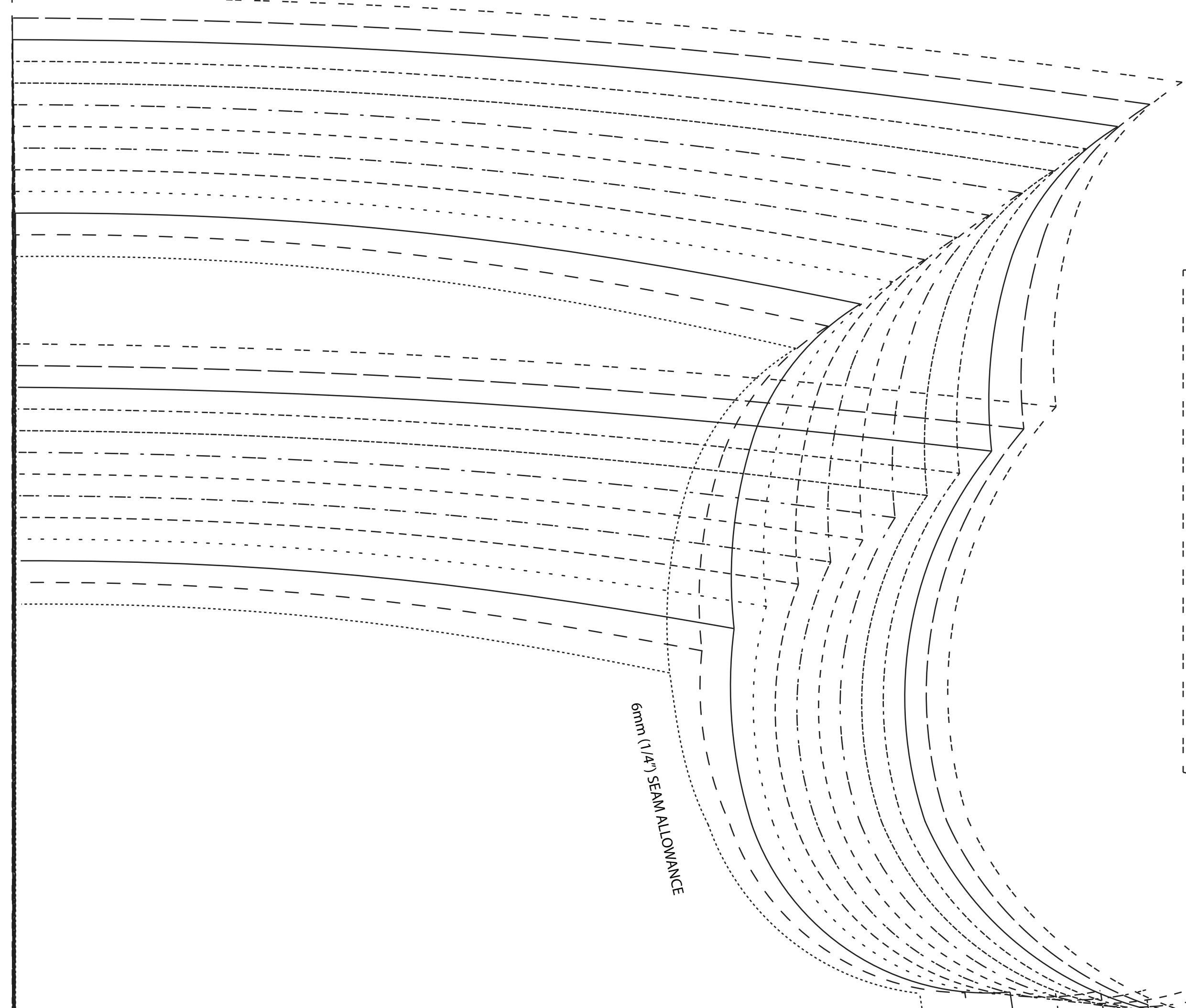


7 BOY LEGS (OPTIONAL) CUT 1



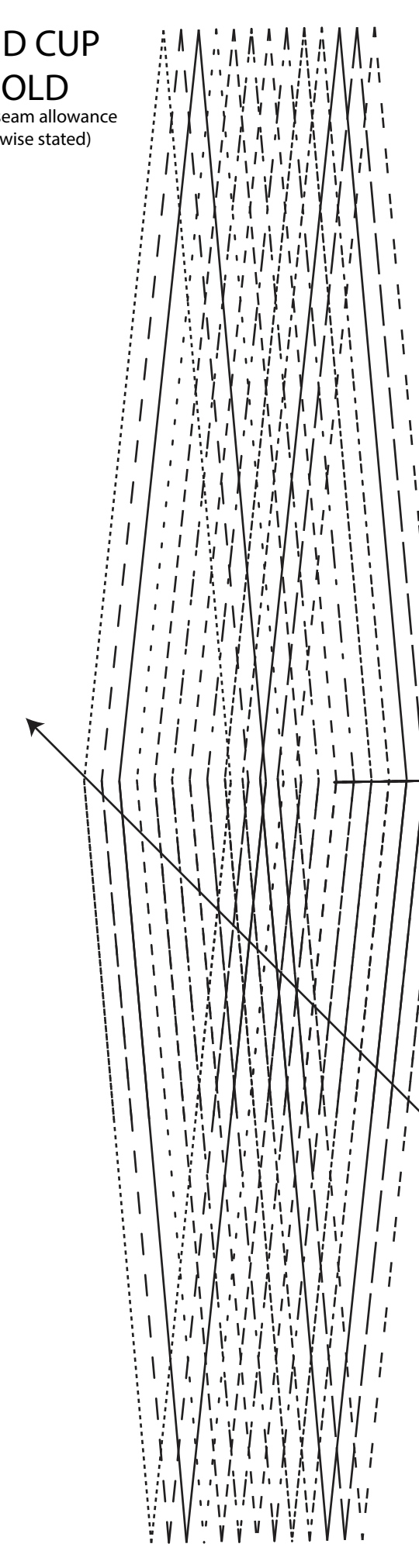
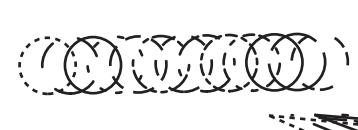
JOSE CAMI, BODYSUIT and SLIP DRESS #0721 **9** CROTCH EXTENSION - GEE/TUCKING CUT 2 ON BIAS GRAIN





JOSE CAMI, BODYSUIT and SLIP DRESS #0721

2 FRONT - D CUP CUT 1 FOLD (1.5 cms (5/8") seam allowance unless otherwise stated)



WAISTLINE

STRAIGHT GRAIN - CUT ON FOLD

BIAS GRAIN - CUT 1 ON FOLD

CUT HERE BODY SUIT 6mm (1/4") SEAM ALLOWANCE

CUT HERE CAMI LENGTH. 1.5 cms (5/8") HEM ALLOWANCE

CUT HERE 50CMS (20cms) LENGTH HEM ALLOWANCE 1.5 cms

CUT HERE 50CMS (20cms) LENGTH HEM ALLOWANCE 1.5 cms

CUT HERE SLIP LENGTH. 1.5 cms (5/8") HEM ALLOWANCE

