



JOSE CAMI, BODYSUIT and SLIP DRESS #0721

5cms square

2 inch square



JOSE CAMI, BODYSUIT and SLIP DRESS #0721

**1** BACK CUT 1 FOLD (1.5 cms (5/8") seam allowance unless otherwise stated)

WAISTLINE

STRAIGHT GRAIN - CUT ON FOLD

BIAS GRAIN - CUT 1 ON FOLD

6mm (1/4") SEAM ALLOWANCE

CUT HERE BODY SUIT 6mm (1/4") SEAM ALLOWANCE

CUT HERE CAMI LENGTH 1.5 cms (5/8") HEM ALLOWANCE

CUT HERE 50CMS (22") LENGTH HEM ALLOWANCE 1.5 cms

CUT HERE 55CMS (22") LENGTH HEM ALLOWANCE 1.5 cms

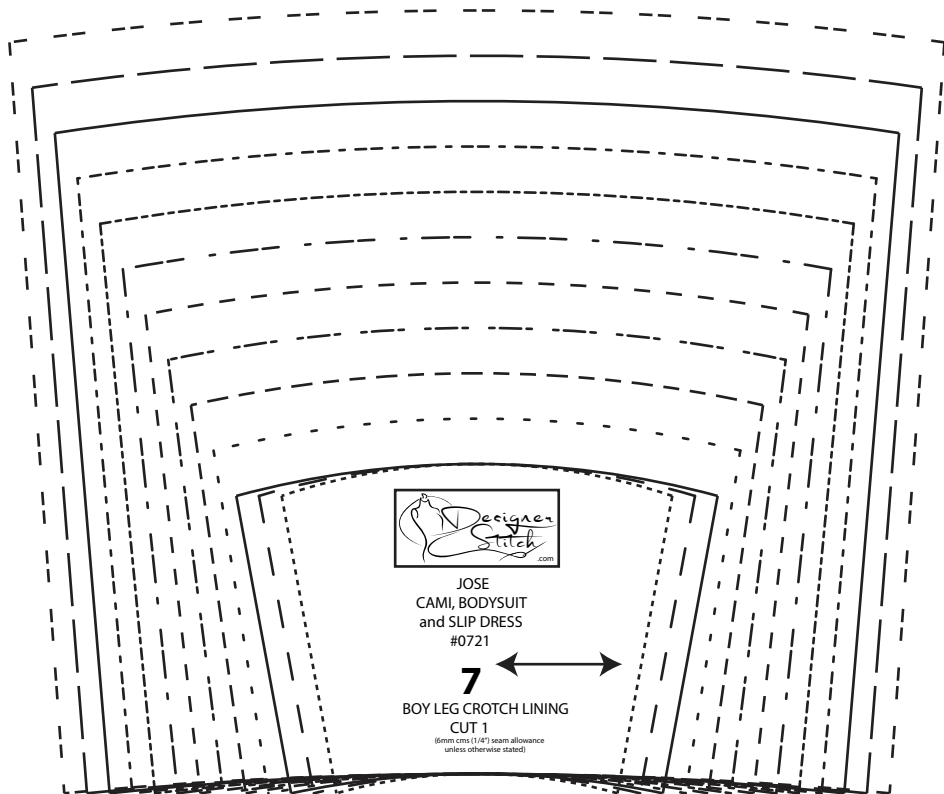
CUT HERE SLIP LENGTH 1.5 cms (5/8") HEM ALLOWANCE

**4** BOY LEG BRIEFS CUT 2

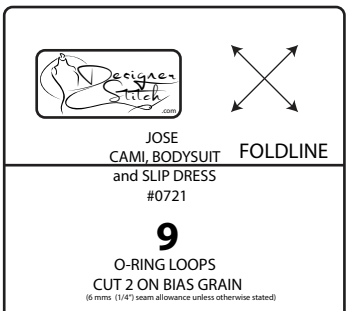
NOTE: When cutting use straight line edge aligned to the outside edge of garment and curved edge for primary pieces.



**8** CROTCH EXTENSION - GEE/TUCKING CUT 2



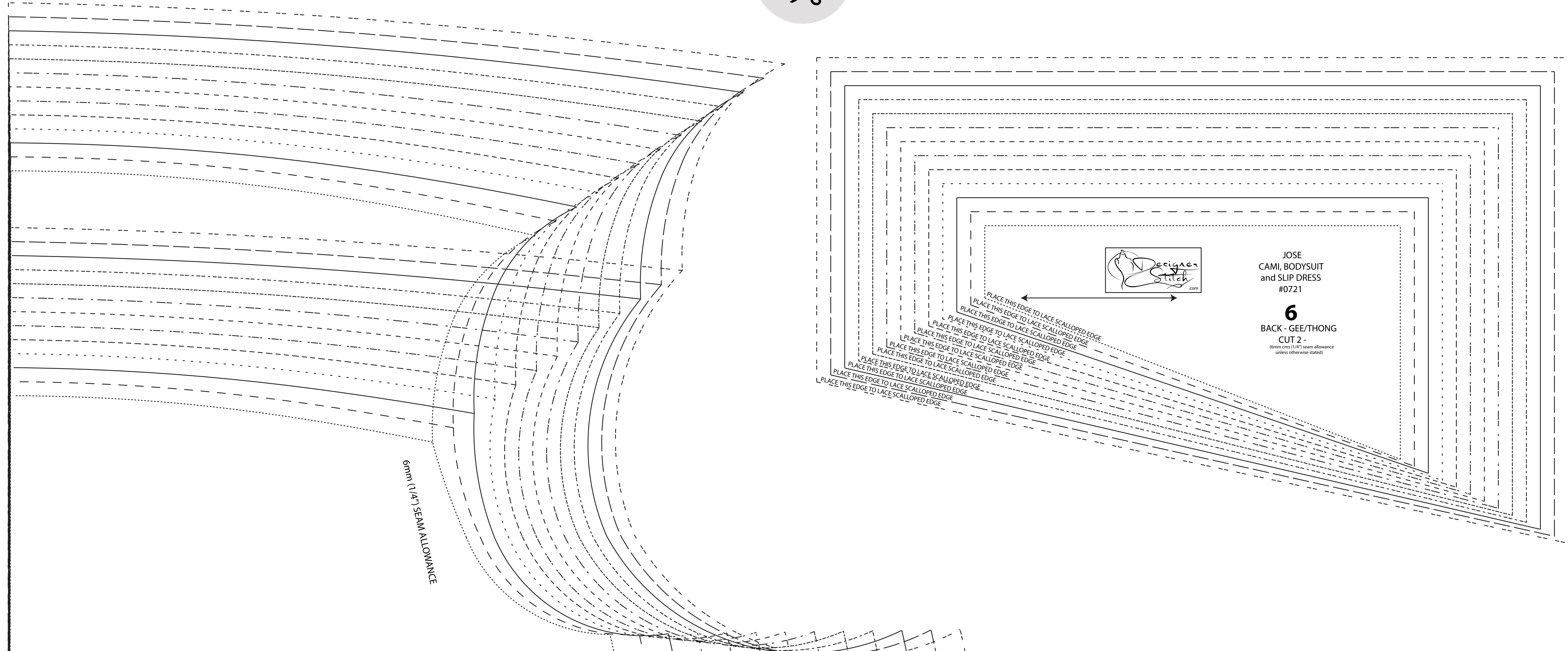
**7** BOY LEGS (SHORTLEGS) CUT 1



**9** CROTCH EXTENSION CUT 2 ON BIAS GRAIN





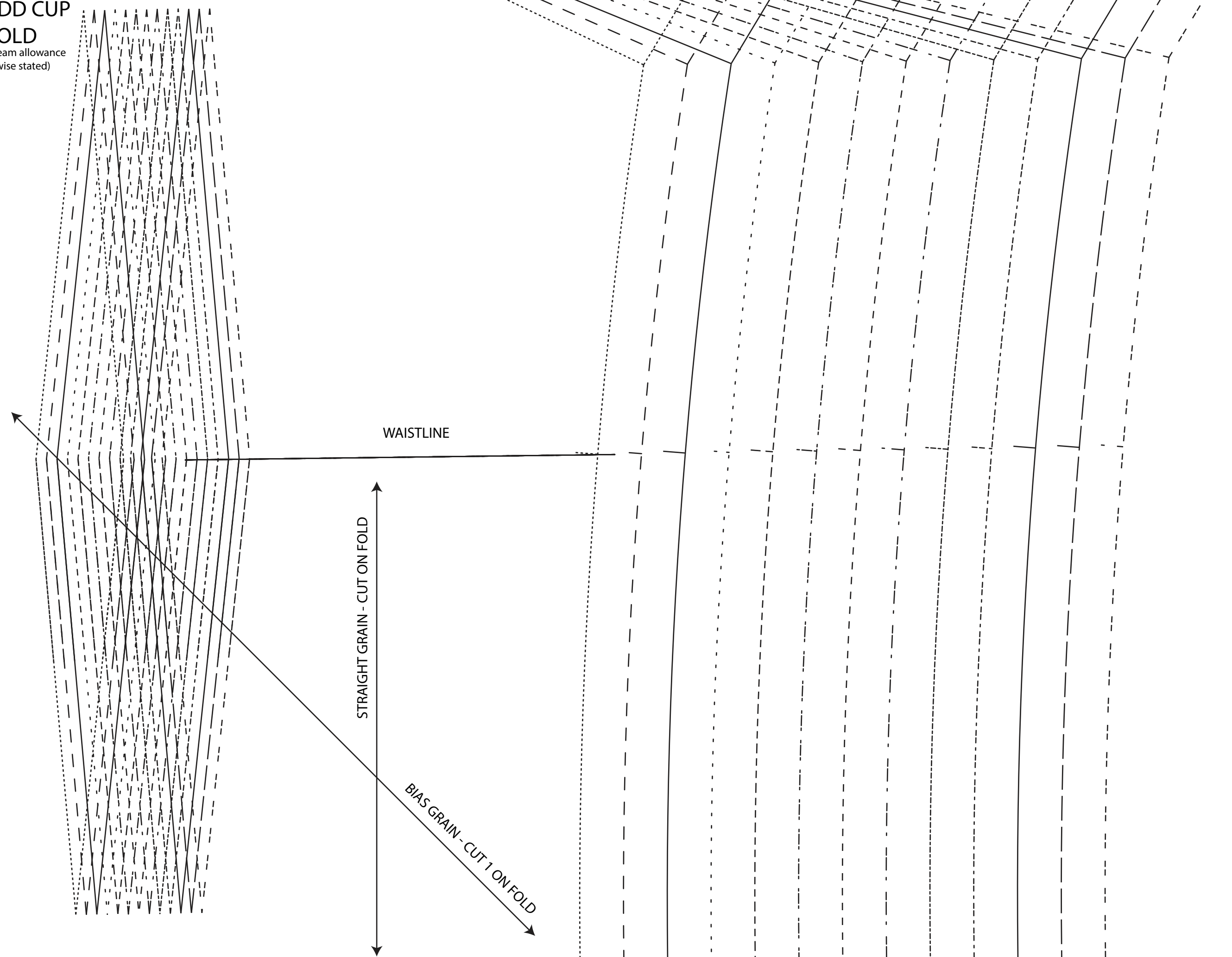


JOSE  
CAMI, BODYSUIT  
and SLIP DRESS  
#0721  
**6**  
BACK - GEE/THONG  
CUT 2 -  
(1.5cm (5/8") hem allowance  
unless otherwise stated)



JOSE  
CAMI, BODYSUIT  
and SLIP DRESS  
#0721

**2**  
FRONT - DD CUP  
CUT 1 FOLD  
(1.5 cms (5/8") seam allowance  
unless otherwise stated)



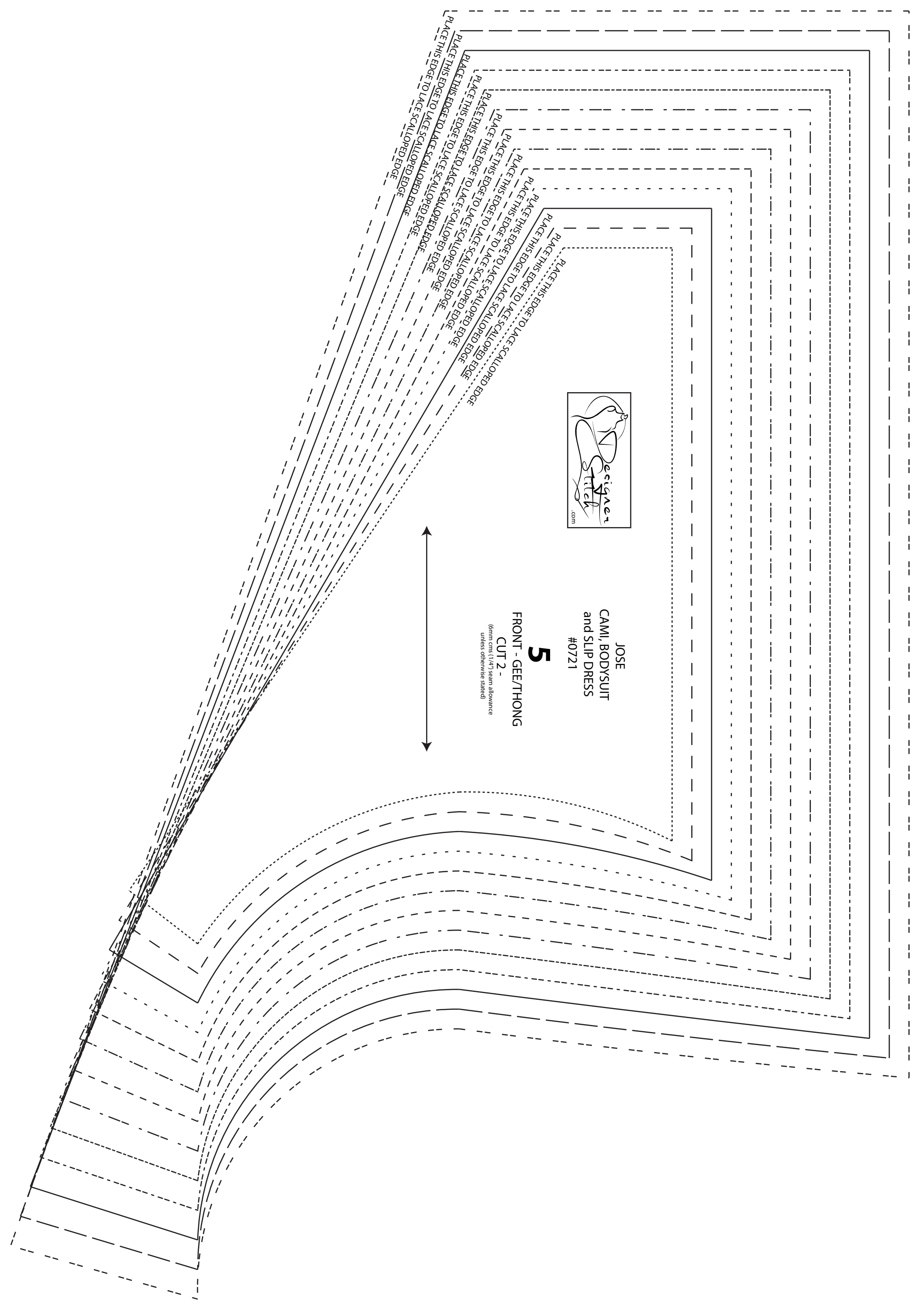
CUT HERE BODY SUIT  
6mm (1/4") SEAM ALLOWANCE

CUT HERE CAMI LENGTH.  
1.5 cms (5/8") HEM ALLOWANCE

CUT HERE 50CMS (20cms) LENGTH  
HEM ALLOWANCE 1.5 cms

CUT HERE 50CMS (20cms) LENGTH  
HEM ALLOWANCE 1.5 cms

CUT HERE SLIP LENGTH.  
1.5 cms (5/8") HEM ALLOWANCE



JOSE  
CAMI, BODYSUIT  
and SLIP DRESS  
#0721  
**5**  
FRONT - GEE/THONG  
CUT 2 -  
(1.5cm (5/8") hem allowance  
unless otherwise stated)