

1 cms (3/8") SEAM ALLOWANCES

6 mm (1/4") SEAM ALLOWANCES

1 cms (3/8") SEAM ALLOWANCES

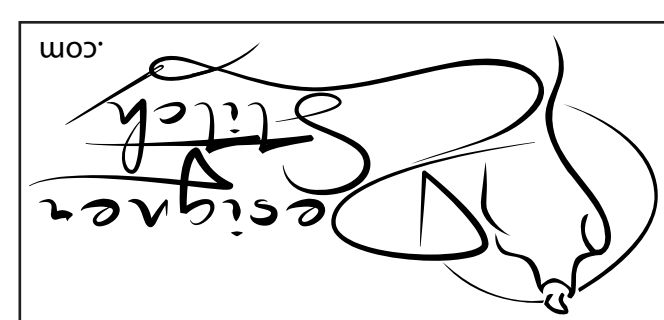
(1.5 cms (5/8") seam allowance unless otherwise stated)
CUT 2
SLEEVE

5

MAEVE DRESS
#0622

CUT HERE SHORT SLEEVE

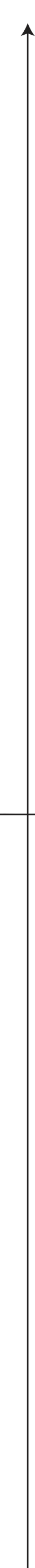
1 cms (3/8") SEAM ALLOWANCES



MAEVE DRESS
#0622

1

BACK
CUT 2
(1.5 cms (5/8") seam allowance unless otherwise stated)



WAISTLINE

HIPLINE

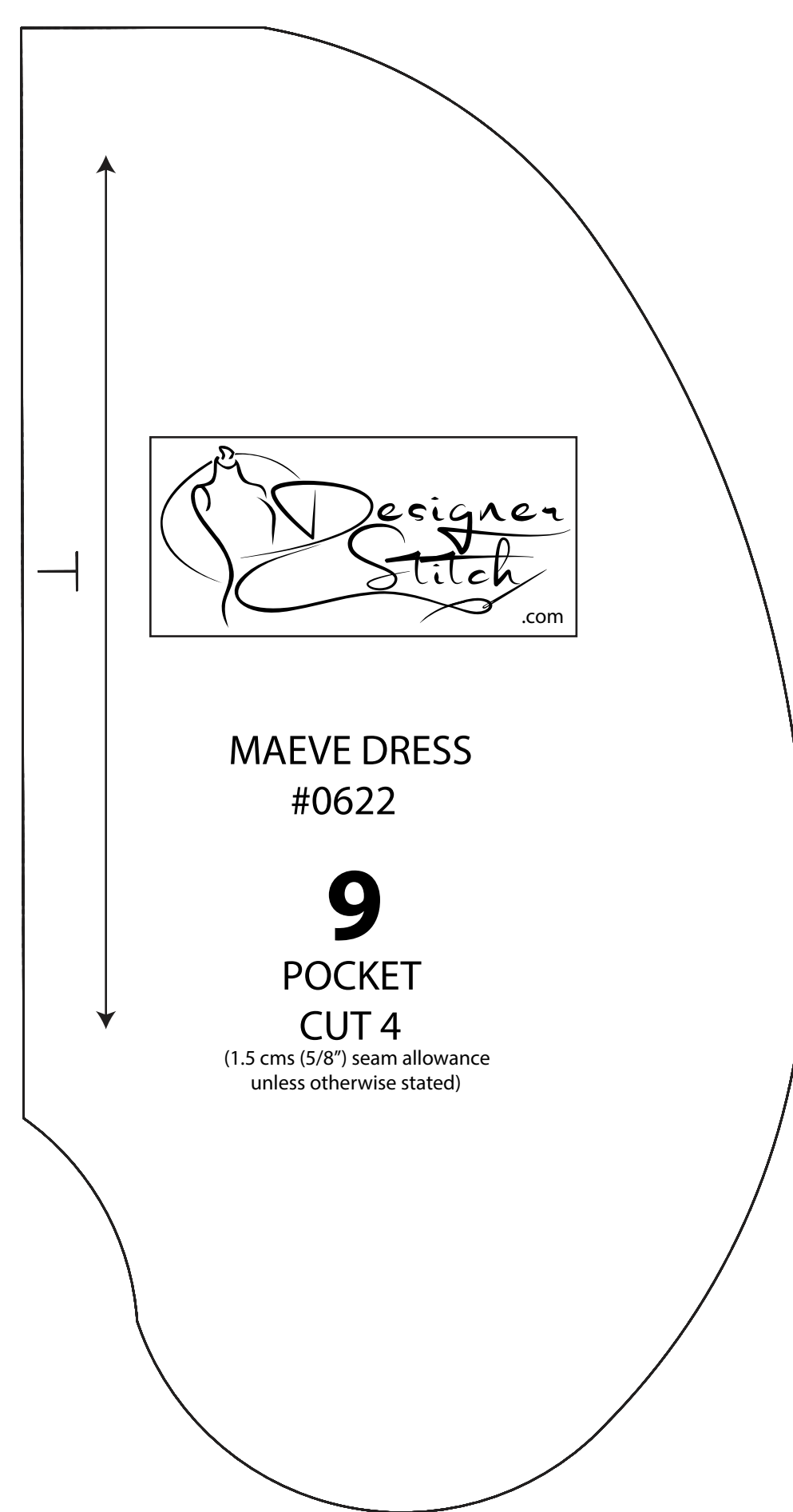
SHORTEN/LENGTHEN HERE

CUT HERE 50 cms (20") LENGTH

CUT HERE 55 cms (22") LENGTH

CUT HERE 60 cms (24") LENGTH

6 mm (1/4") SEAM ALLOWANCES
MAEVE DRESS #0622
6
COLLAR
CUT 2 - MAIN
CUT 2 - INTERFACING
6 mm (1/4") SEAM ALLOWANCES



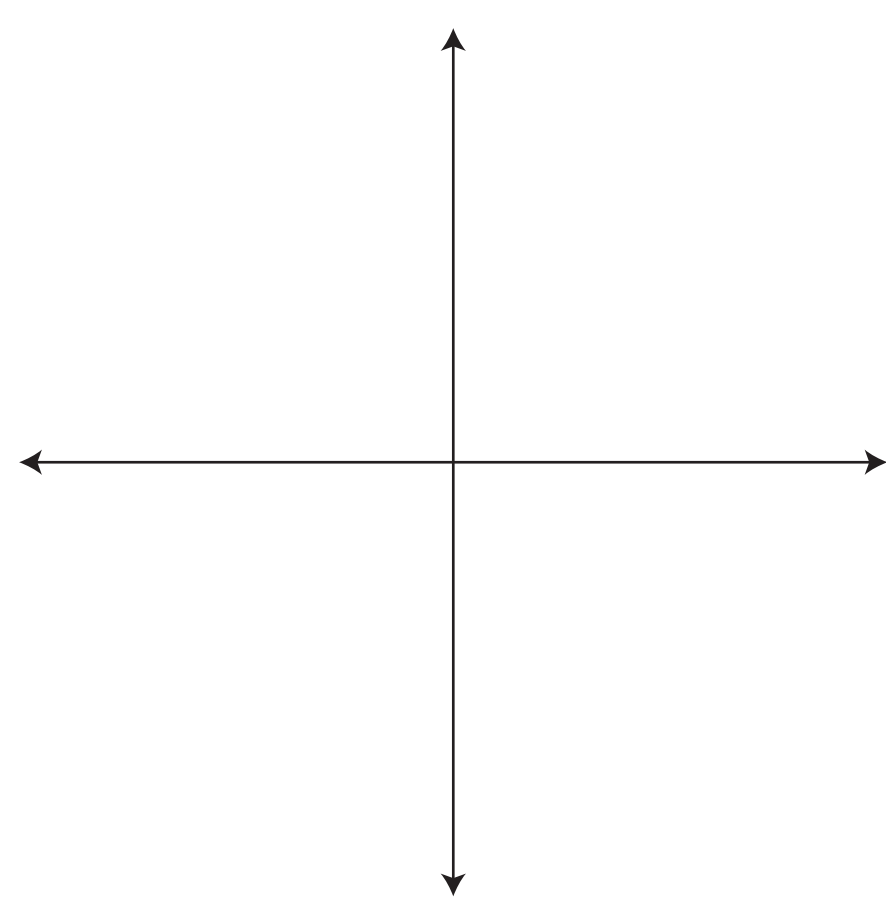
1 cms (3/8") SEAM ALLOWANCES



MAEVE DRESS
#0622

8

SLEEVE RUFFLE
CUT 2
(1.5 cms (5/8") seam allowance unless otherwise stated)



2 cms (3/4") HEM ALLOWANCES



MAEVE DRESS #0622

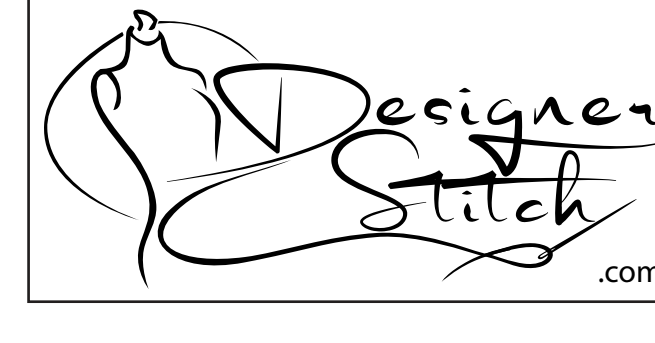
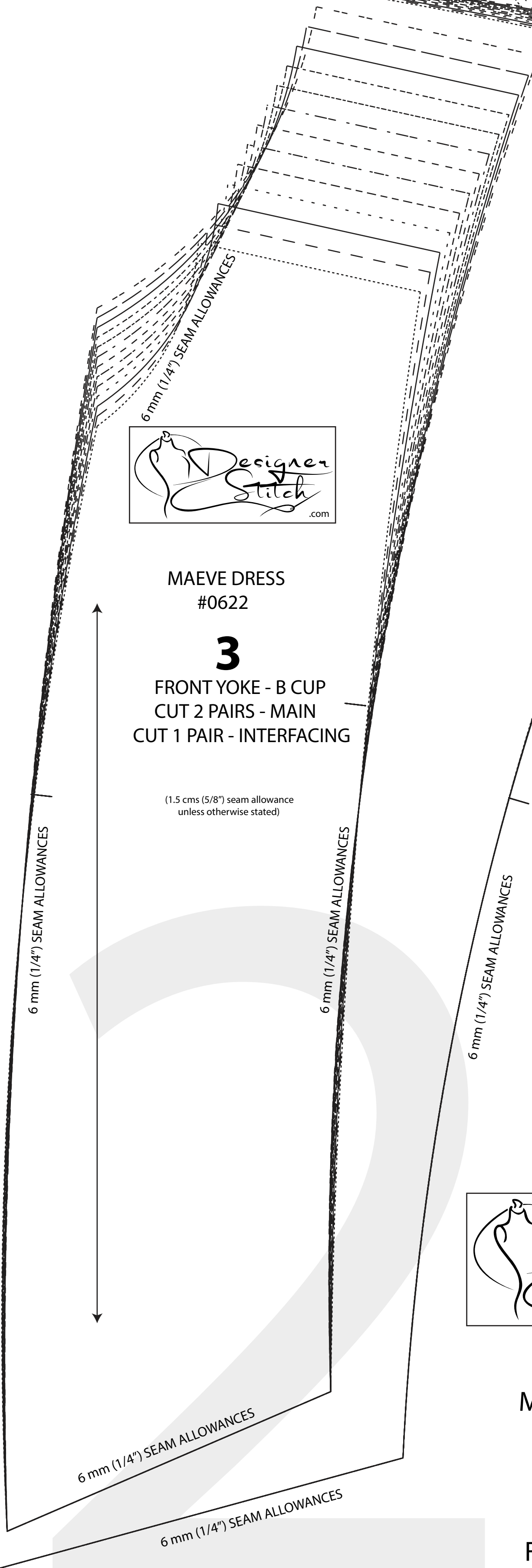
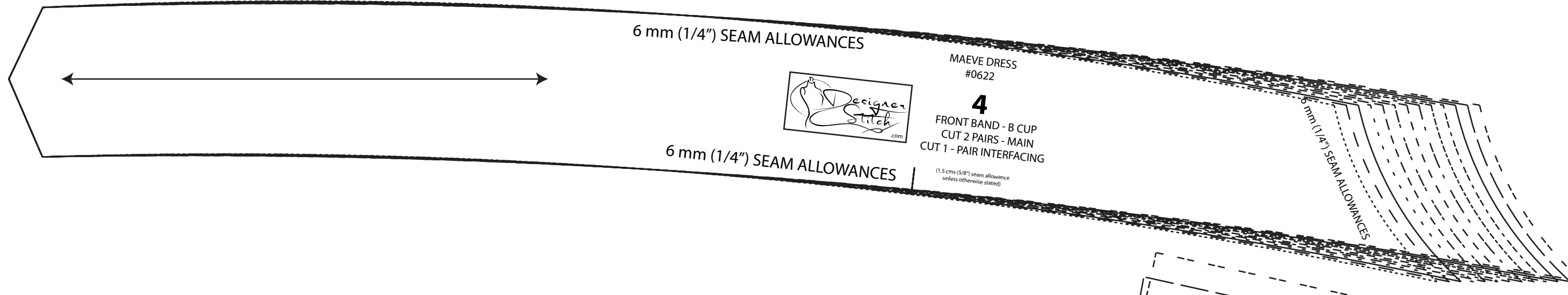
5cms square

2 inch square

B Cup

SIZE KEY

- 1 (dash-dot)
- 2 - - - - - (dashed)
- 3 _____ (solid)
- 4 (dash-dot)
- 5 - - - - - (dashed)
- 6 (dash-dot)
- 7 - - - - - (dashed)
- 8 (dash-dot)
- 9 - - - - - (dashed)
- 10 (dash-dot)
- 11 _____ (solid)
- 12 - - - - - (dashed)
- 13 (dash-dot)



MAEVE DRESS #0622

2
FRONT - B CUP
CUT 1 FOLD
(1.5 cms (5/8 inch) seam allowance unless otherwise stated)

WAISTLINE

HIPLINE

SHORTEN/LENGTHEN HERE

CUT HERE 50 cms (20 inch) LENGTH

CUT HERE 55 cms (22 inch) LENGTH

CUT HERE 60 cms (24 inch) LENGTH

1 cms (3/8 inch) SEAM ALLOWANCES



MAEVE DRESS #0622

7
BODY RUFFLE
CUT 2 - FOLD
(1.5 cms (5/8 inch) seam allowance unless otherwise stated)

2 cms (3/4 inch) HEM ALLOWANCES

