

1 cms (3/8") SEAM ALLOWANCES

6 mm (1/4") SEAM ALLOWANCES

1 cms (3/8") SEAM ALLOWANCES

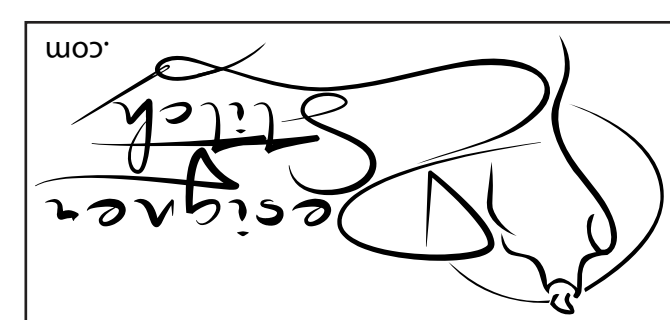
1.5 cms (5/8") seam allowance unless otherwise stated

SLEEVE CUT 2

5

MAEVE DRESS #0622

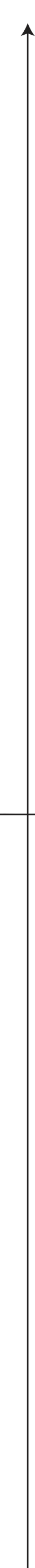
CUT HERE SHORT SLEEVE



MAEVE DRESS #0622

1

BACK CUT 2 (1.5 cms (5/8") seam allowance unless otherwise stated)



WAISTLINE

HIPLINE

SHORTEN/LENGTHEN HERE

CUT HERE 50 cms (20") LENGTH

CUT HERE 55 cms (22") LENGTH

CUT HERE 60 cms (24") LENGTH

6 mm (1/4") SEAM ALLOWANCES

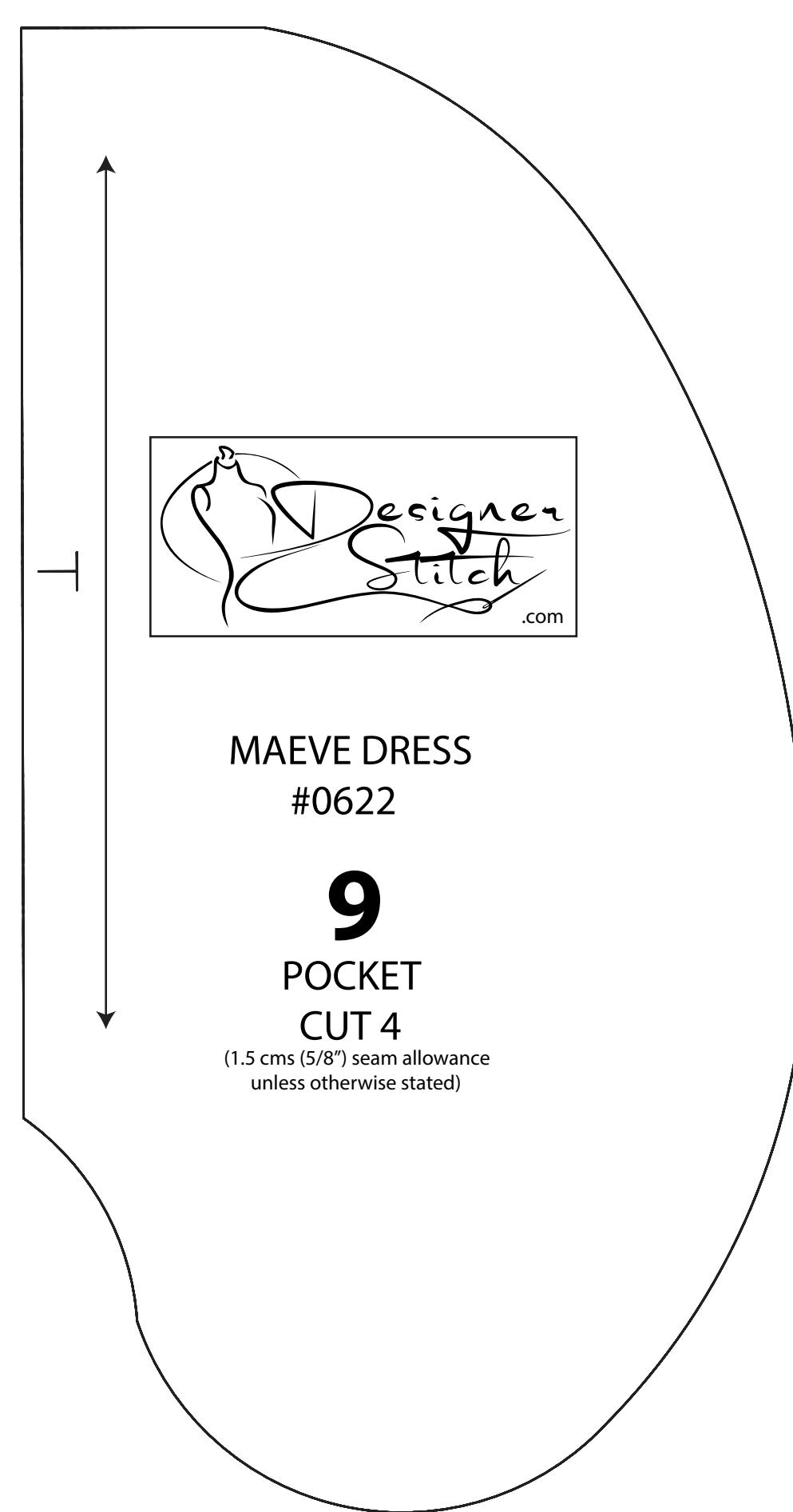
MAEVE DRESS #0622

6

COLLAR CUT 3 - MAIN CUT 2 - INTERFACING



6 mm (1/4") SEAM ALLOWANCES



MAEVE DRESS #0622

9

POCKET CUT 4 (1.5 cms (5/8") seam allowance unless otherwise stated)

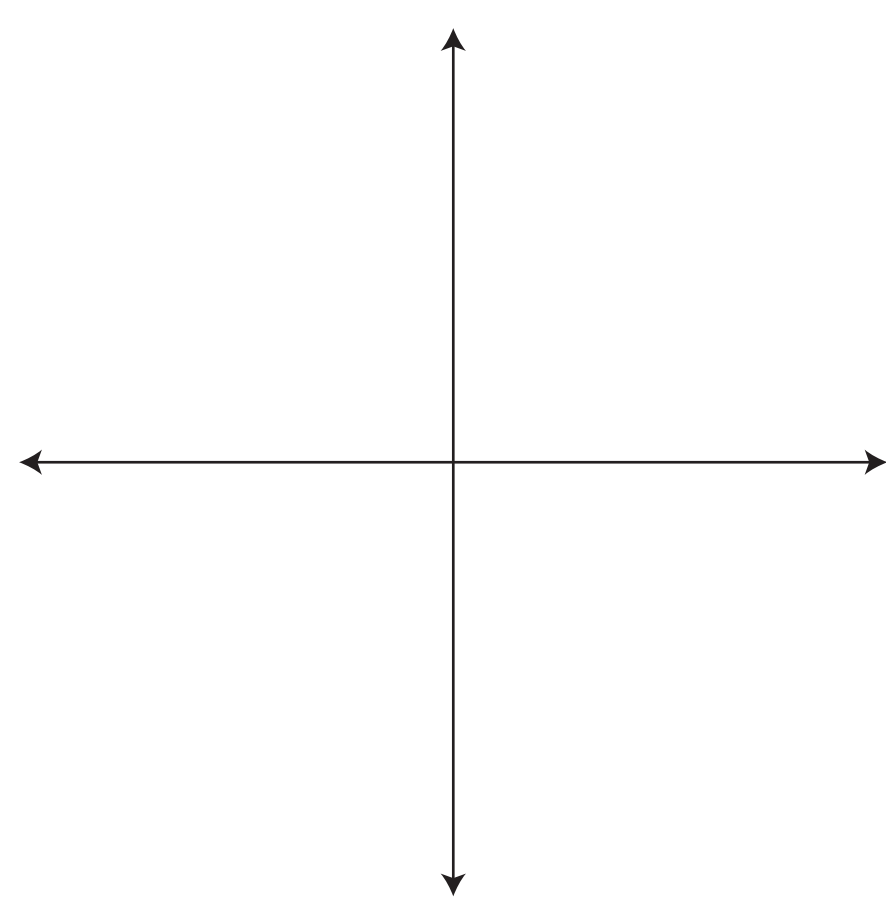
1 cms (3/8") SEAM ALLOWANCES



MAEVE DRESS #0622

8

SLEEVE RUFFLE CUT 2 (1.5 cms (5/8") seam allowance unless otherwise stated)



2 cms (3/4") HEM ALLOWANCES



MAEVE DRESS
#0622

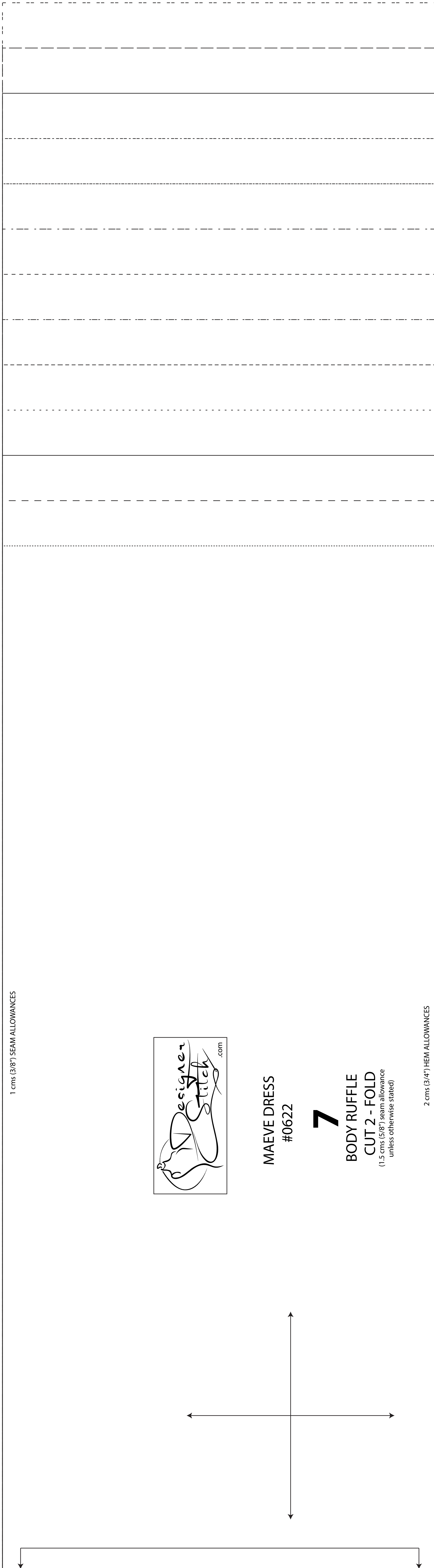
5cms square

2 inch square

C Cup

SIZE KEY

- 1 (dash)
- 2 (dash)
- 3 (dash)
- 4 (dash)
- 5 (dash)
- 6 (dash)
- 7 (dash)
- 8 (dash)
- 9 (dash)
- 10 (dash)
- 11 (dash)
- 12 (dash)
- 13 (dash)



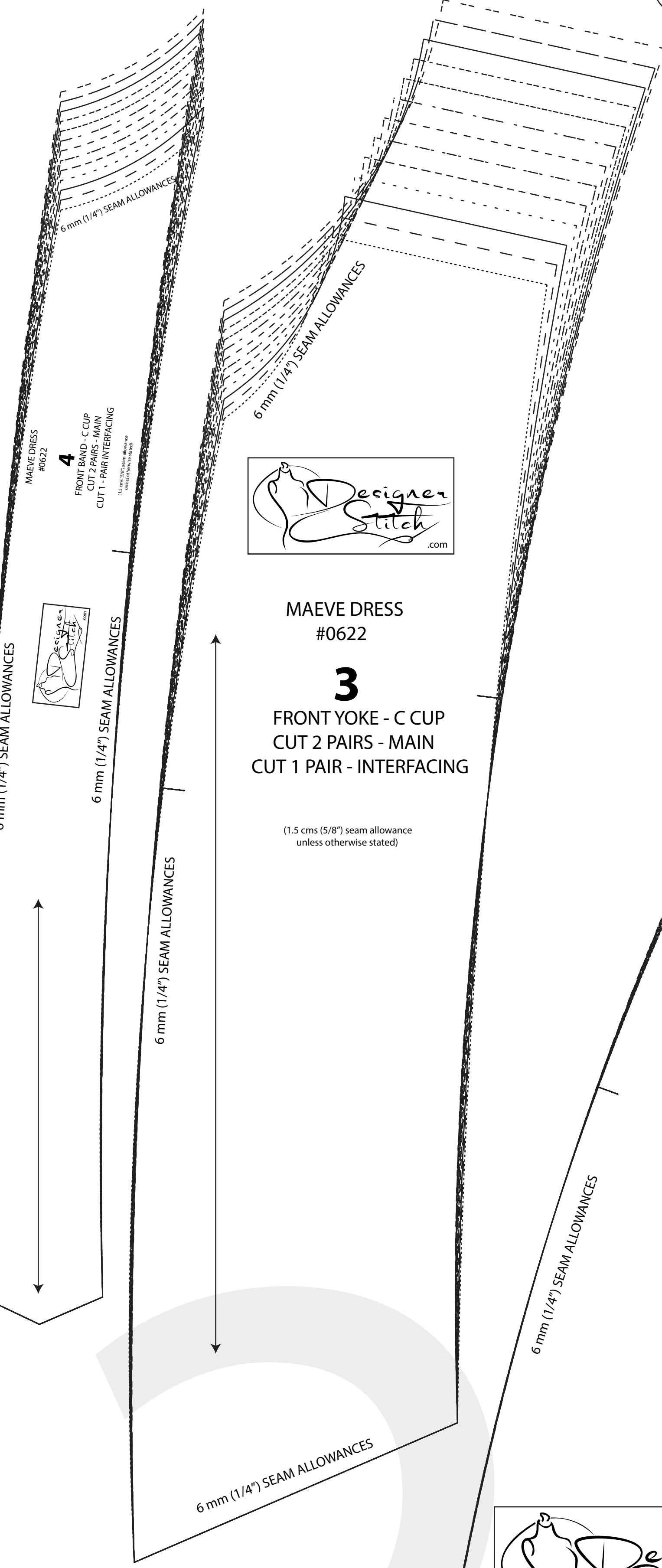
MAEVE DRESS
#0622

7

BODY RUFFLE
CUT 2 - FOLD
(1.5 cms (5/8") seam allowance
unless otherwise stated)

2 cms (3/4") SEAM ALLOWANCES

1 cms (3/8") SEAM ALLOWANCES



MAEVE DRESS
#0622

3

FRONT YOKE - C CUP
CUT 2 PAIRS - MAIN
CUT 1 PAIR - INTERFACING

(1.5 cms (5/8") seam allowance
unless otherwise stated)

6 mm (1/4") SEAM ALLOWANCES

6 mm (1/4") SEAM ALLOWANCES

6 mm (1/4") SEAM ALLOWANCES

6 mm (1/4") SEAM ALLOWANCES

6 mm (1/4") SEAM ALLOWANCES

1 cms (3/8") SEAM ALLOWANCES

6 mm (1/4") SEAM ALLOWANCES



MAEVE DRESS
#0622

2

FRONT - C CUP
CUT 1 FOLD
(1.5 cms (5/8") seam allowance
unless otherwise stated)

WAISTLINE

HIPLINE

SHORTEN/LENGTHEN HERE

CUT HERE 50 cms (20") LENGTH

CUT HERE 55 cms (22") LENGTH

CUT HERE 60 cms (24") LENGTH

