

PHOEBE DRESS

#0722

4

BACK SKIRT
CUT 1 FOLD

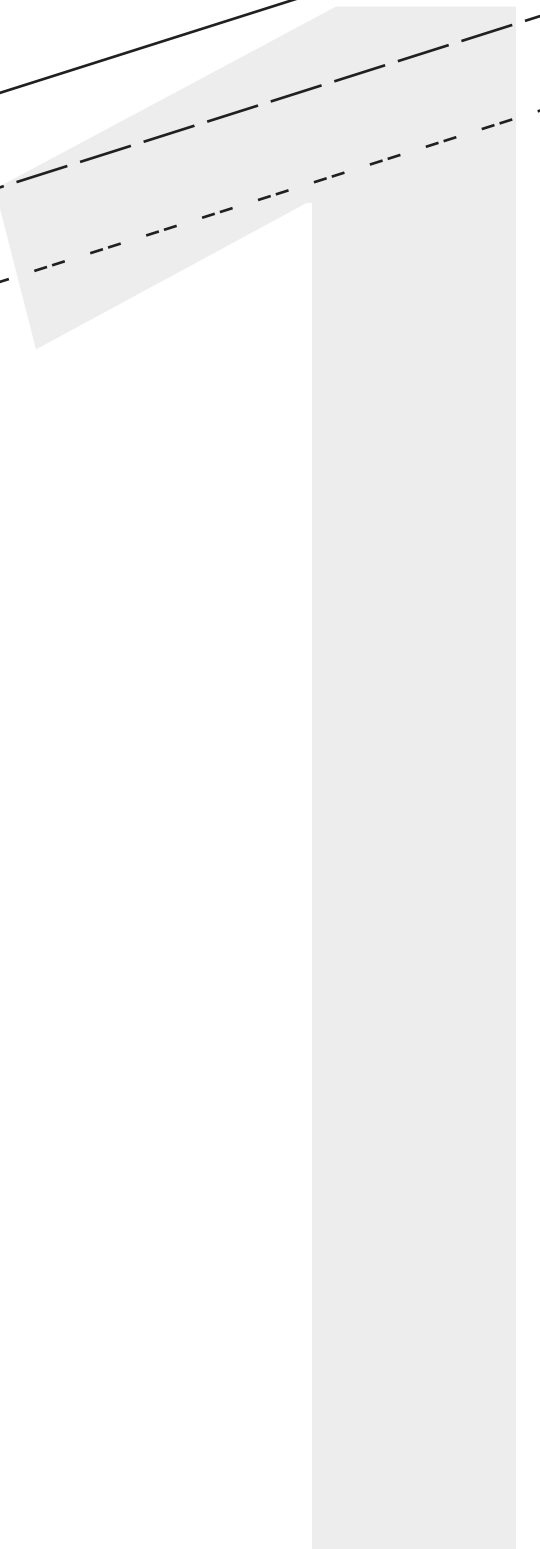
(6mm (1/4") seam allowance unless otherwise stated)



SHORTEN LENGTHEN HERE

CUT HERE 60mm (2 3/8") LENGTH
HEM ALLOWANCE = 20mm (3/4")

CUT HERE 72cm (29 1/8") LENGTH
HEM ALLOWANCE = 20mm (3/4")



SHORTEN LENGTHEN HERE

STRETCH



PHOEBE DRESS

#0722

5

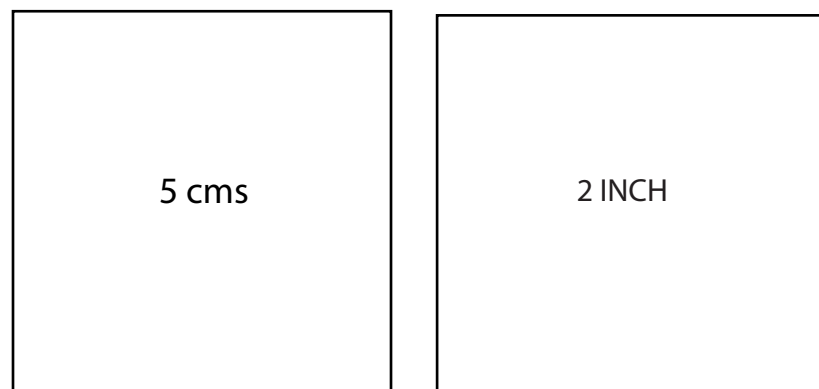
FRONT SKIRT
CUT 1 FOLD

(6mm (1/4") seam allowance unless otherwise stated)

CUT HERE 60mm (2 3/8") LENGTH
HEM ALLOWANCE = 20mm (3/4")



PHOEBE DRESS #0722

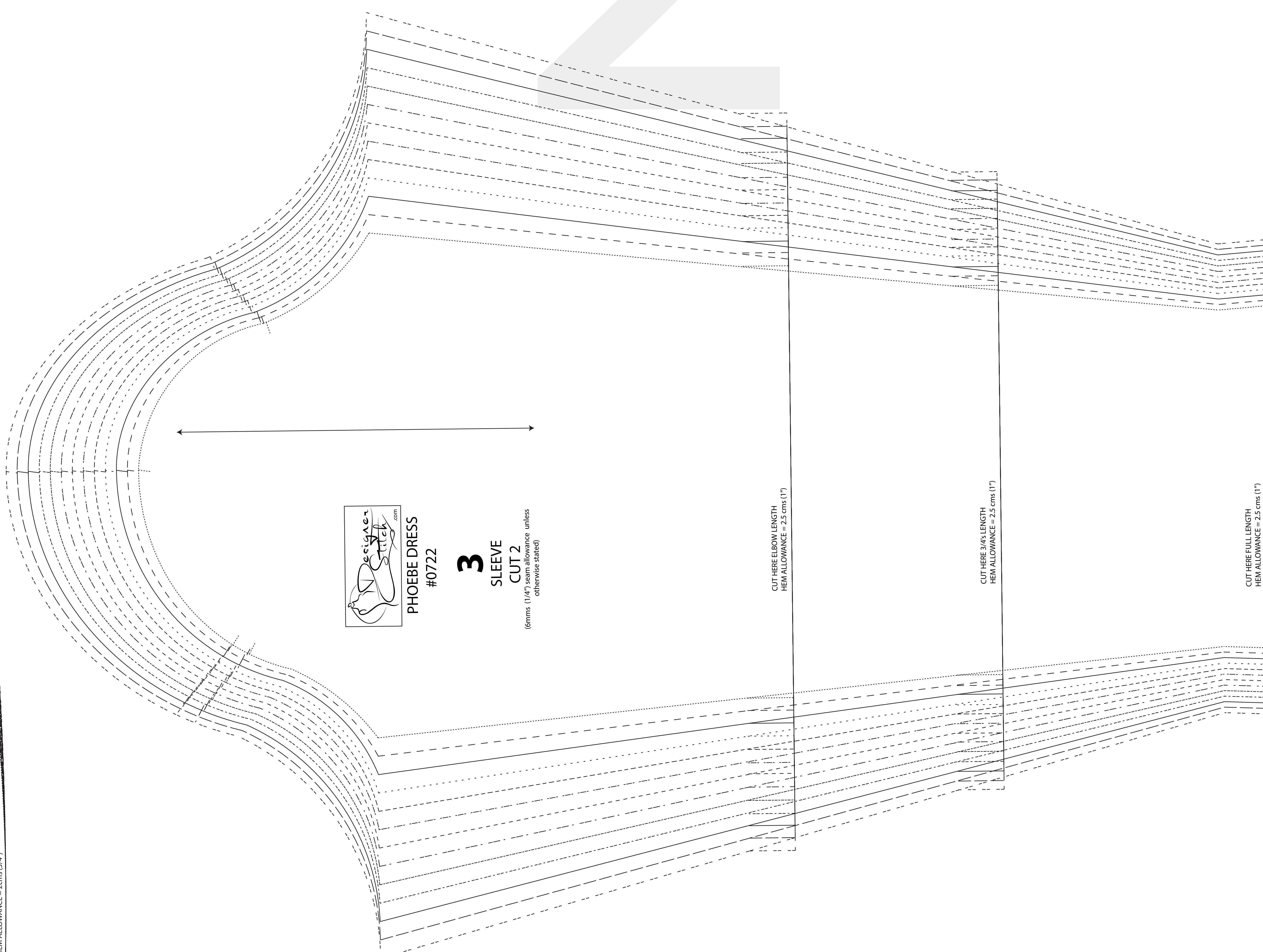
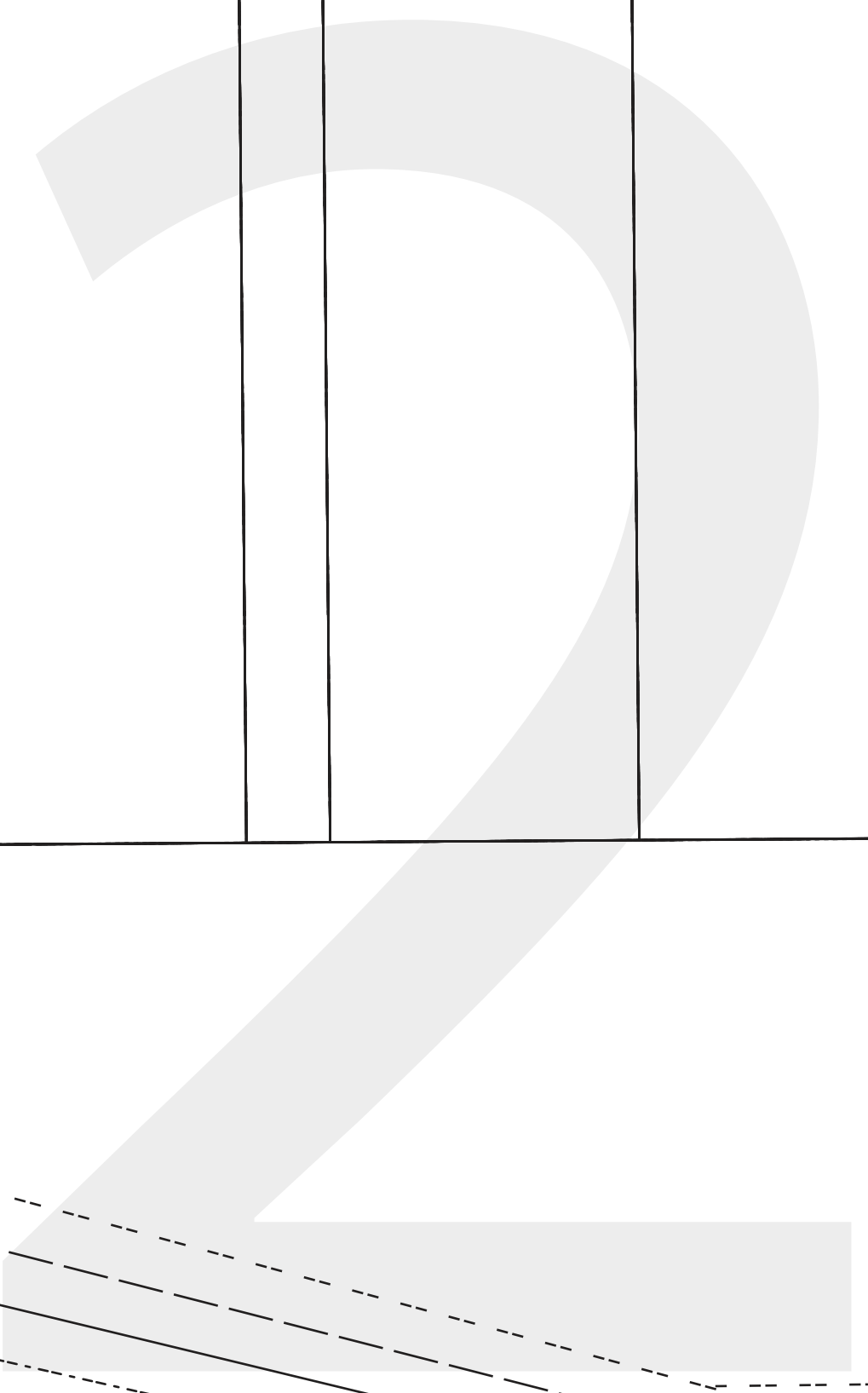
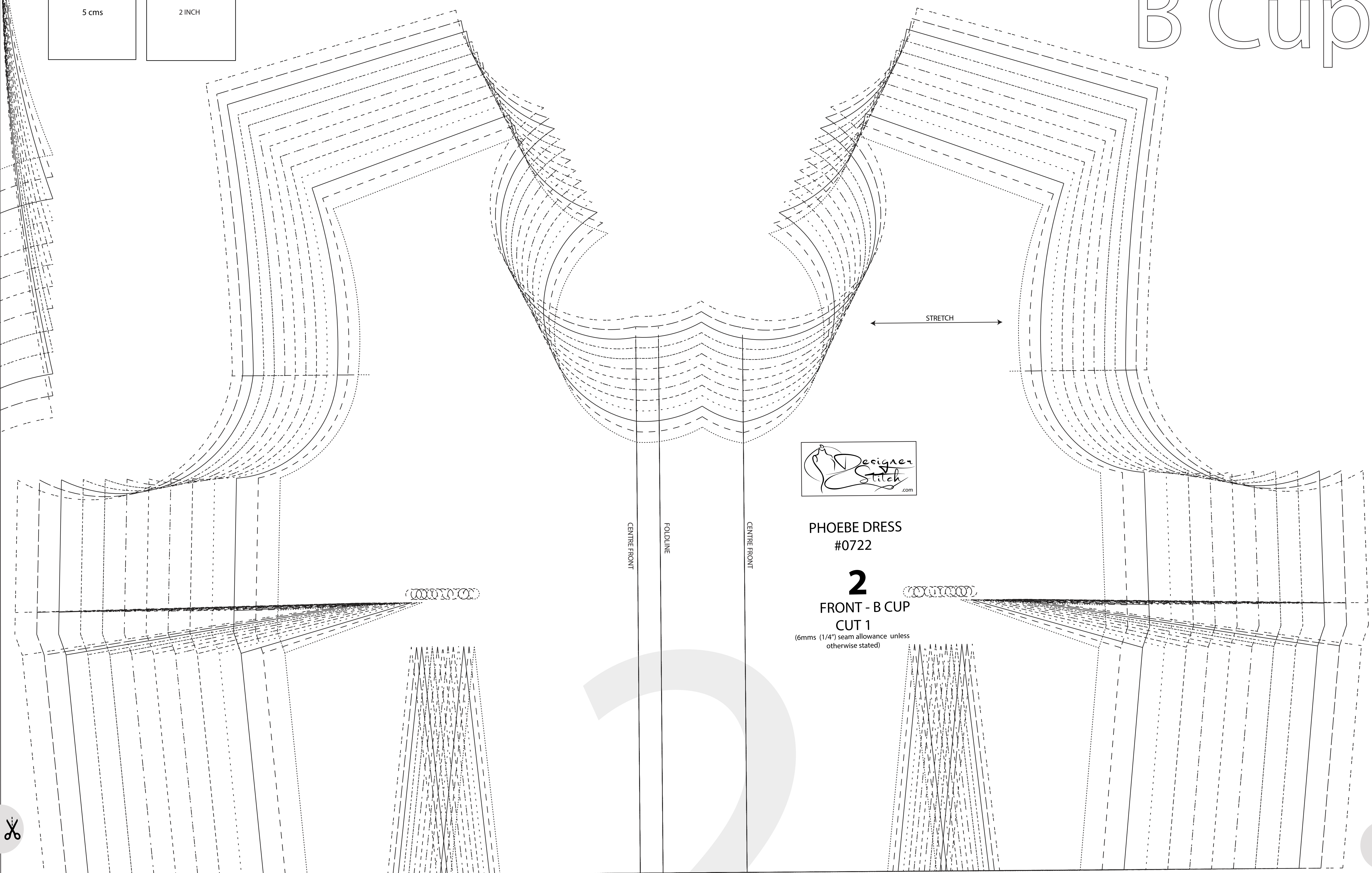


GREATEST STRETCH

PHOEBE DRESS #0722

11 ARMHOLE BIND CUT 2

B Cup



CUT HERE 72 cms (29 1/2") LENGTH HEM ALLOWANCE = 2cms (3/4")



PHOEBE DRESS
#0722

9

PENCIL SKIRT
BACK

CUT 1 FOLD
(6mm (1/4") seam allowance unless otherwise stated)

SHORTEN/LENGTHEN HERE

CUT HERE 55 cms (22") LENGTH
HEM ALLOWANCE = 2.5 cms (1")

CUT HERE 60 cms (24") LENGTH
HEM ALLOWANCE = 2.5 cms (1")

PHOEBE DRESS
#0722

10

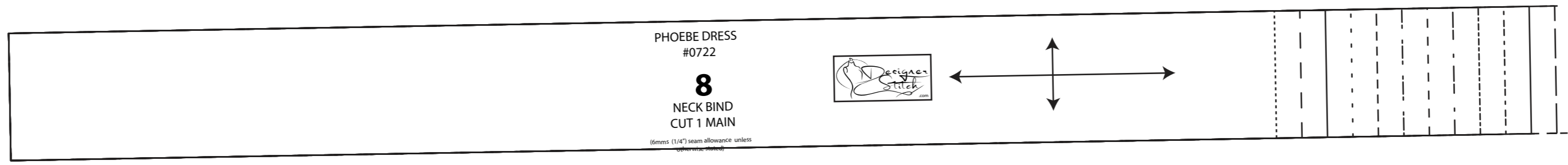
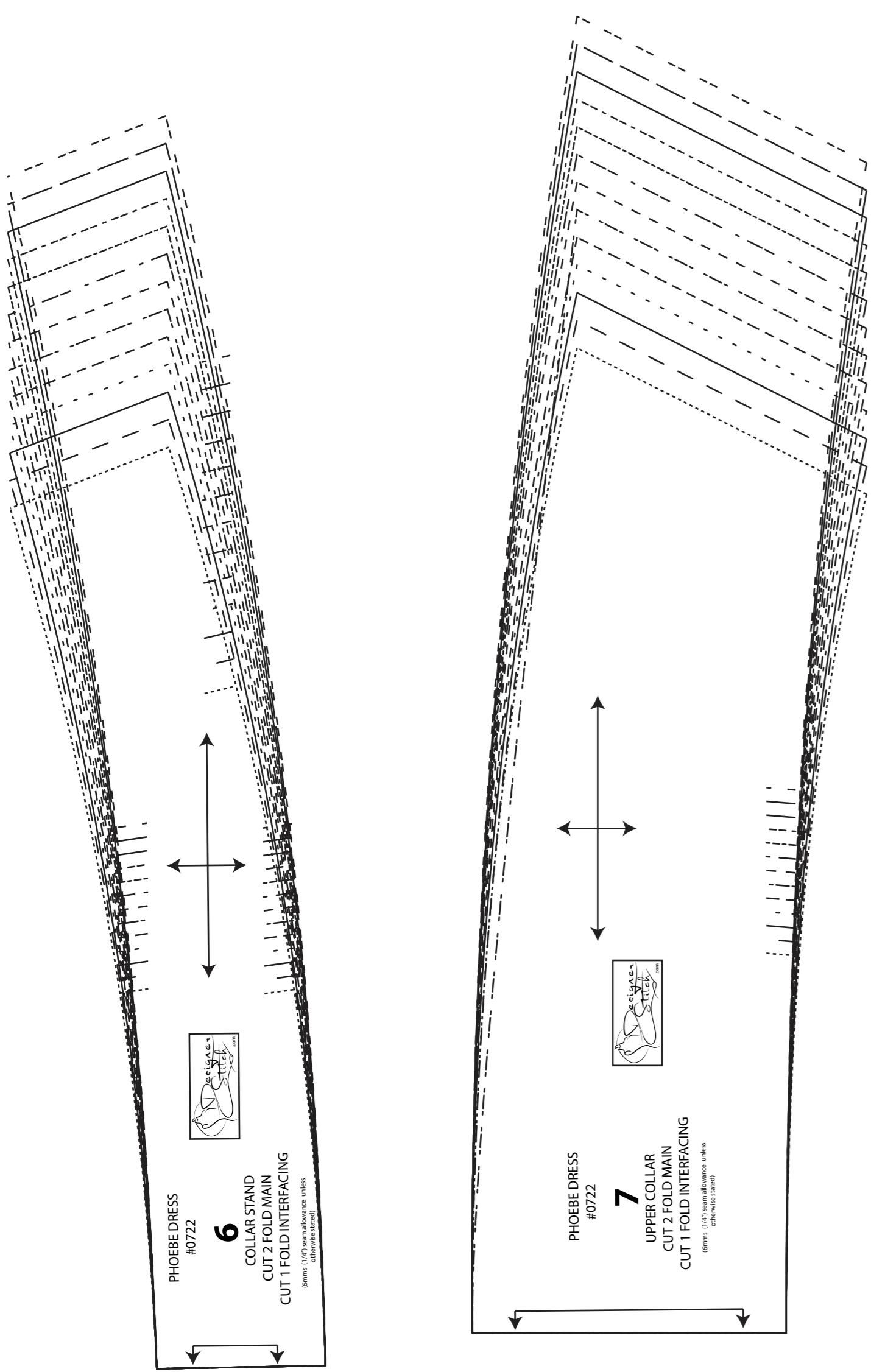
PENCIL SKIRT
FRONT

CUT 1 FOLD
(6mm (1/4") seam allowance unless otherwise stated)

SHORTEN/LENGTHEN HERE

CUT HERE 55 cms (22") LENGTH
HEM ALLOWANCE = 2.5 cms (1")

CUT HERE 60 cms (24") LENGTH
HEM ALLOWANCE = 2.5 cms (1")



SIZE KEY

- 1
- 2
- 3
- 4
- 5
- 6
- 7
- 8
- 9
- 10
- 11
- 12
- 13

Vintage Made
ARTWEAR PUBLICATIONS
© 2021 www.artwearpublishings.com.au



PHOEBE DRESS
#0722

1

BACK

CUT 1 FOLD
(6mm (1/4") seam allowance unless otherwise stated)

STRETCH