



PHOEBE DRESS

#0722

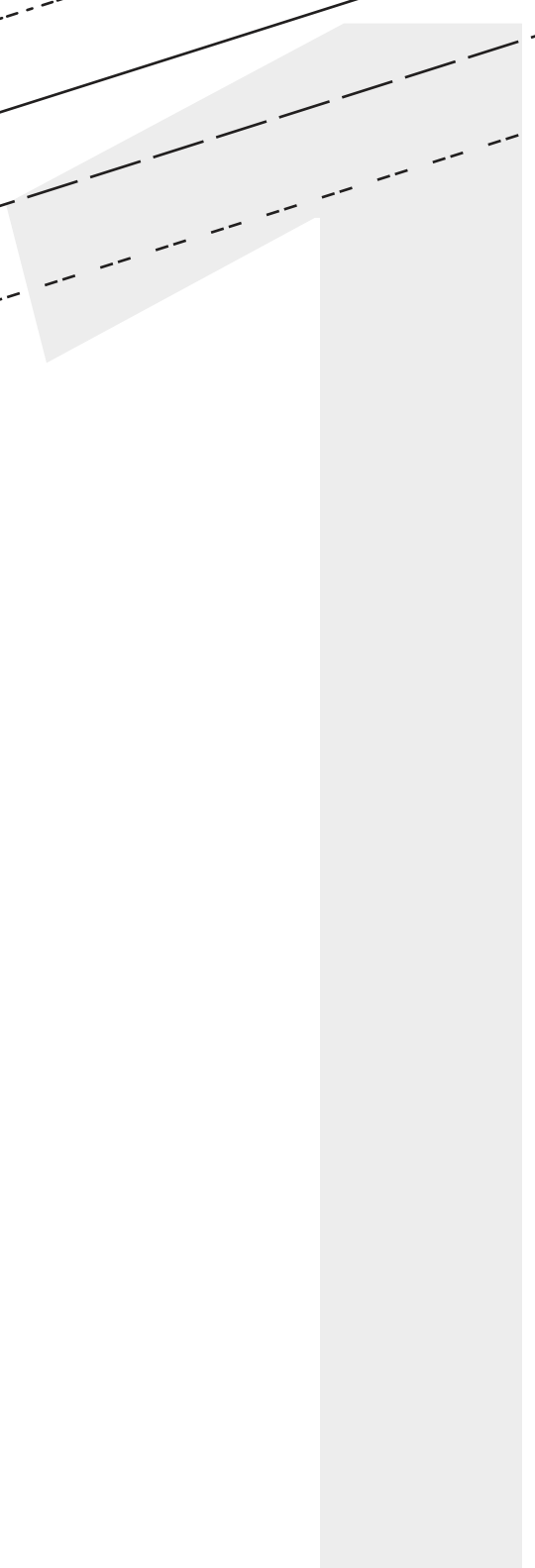
**4**

BACK SKIRT  
CUT 1 FOLD

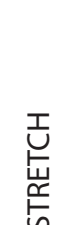
(6mm (1/4") seam allowance unless otherwise stated)



SHORTEN LENGTHEN HERE



SHORTEN LENGTHEN HERE



PHOEBE DRESS

#0722

**5**

FRONT SKIRT  
CUT 1 FOLD

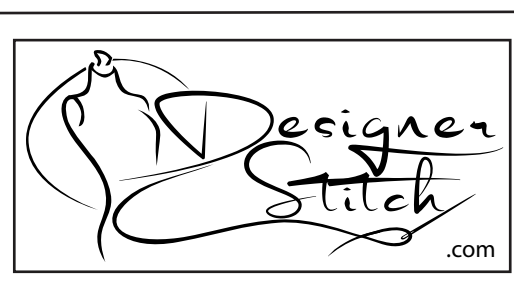
(6mm (1/4") seam allowance unless otherwise stated)

CUT HERE 60mm (2 3/8") LENGTH  
HEM ALLOWANCE = 20mm (3/4")

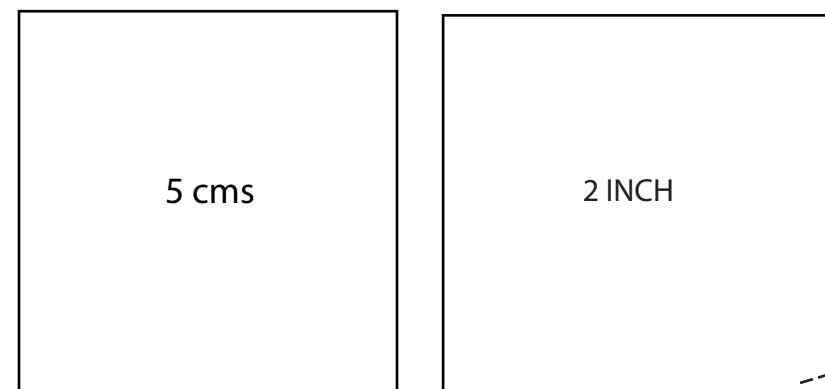
CUT HERE 60mm (2 3/8") LENGTH  
HEM ALLOWANCE = 20mm (3/4")

CUT HERE 72cm (29 1/8") LENGTH  
HEM ALLOWANCE = 20mm (3/4")





PHOEBE DRESS #0722

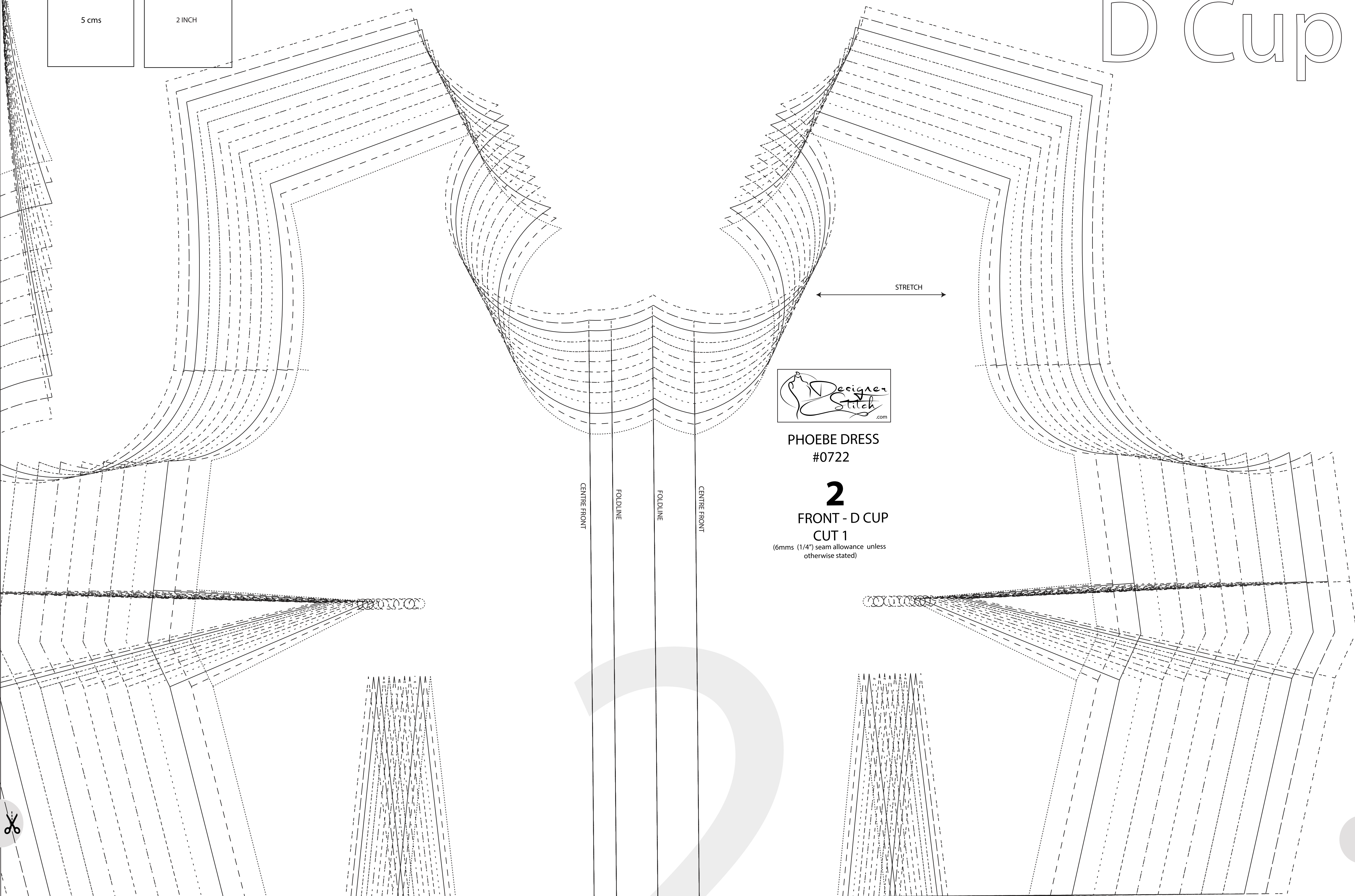


GREATEST STRETCH

PHOEBE DRESS #0722

11 ARMHOLE BIND CUT 2

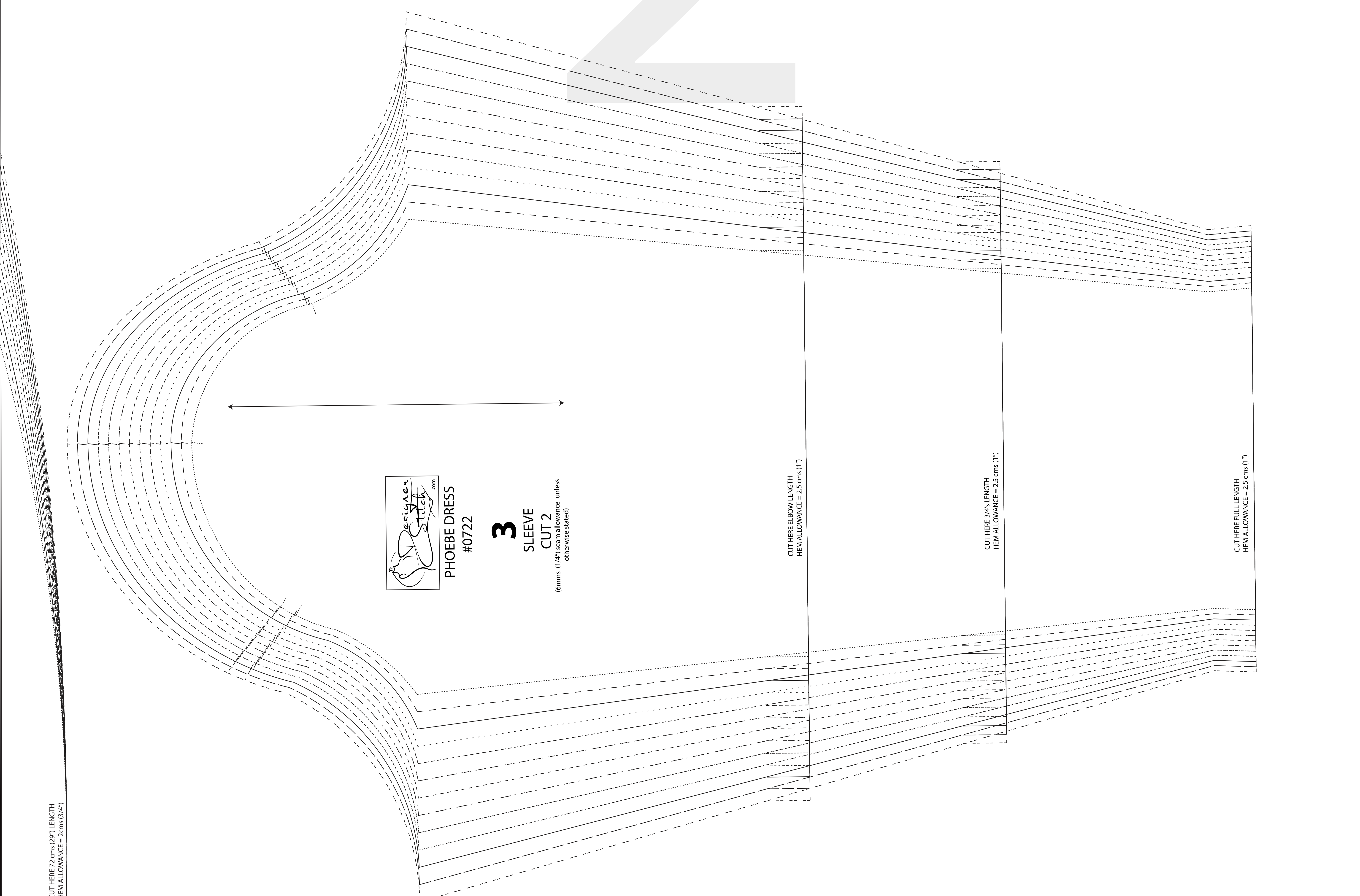
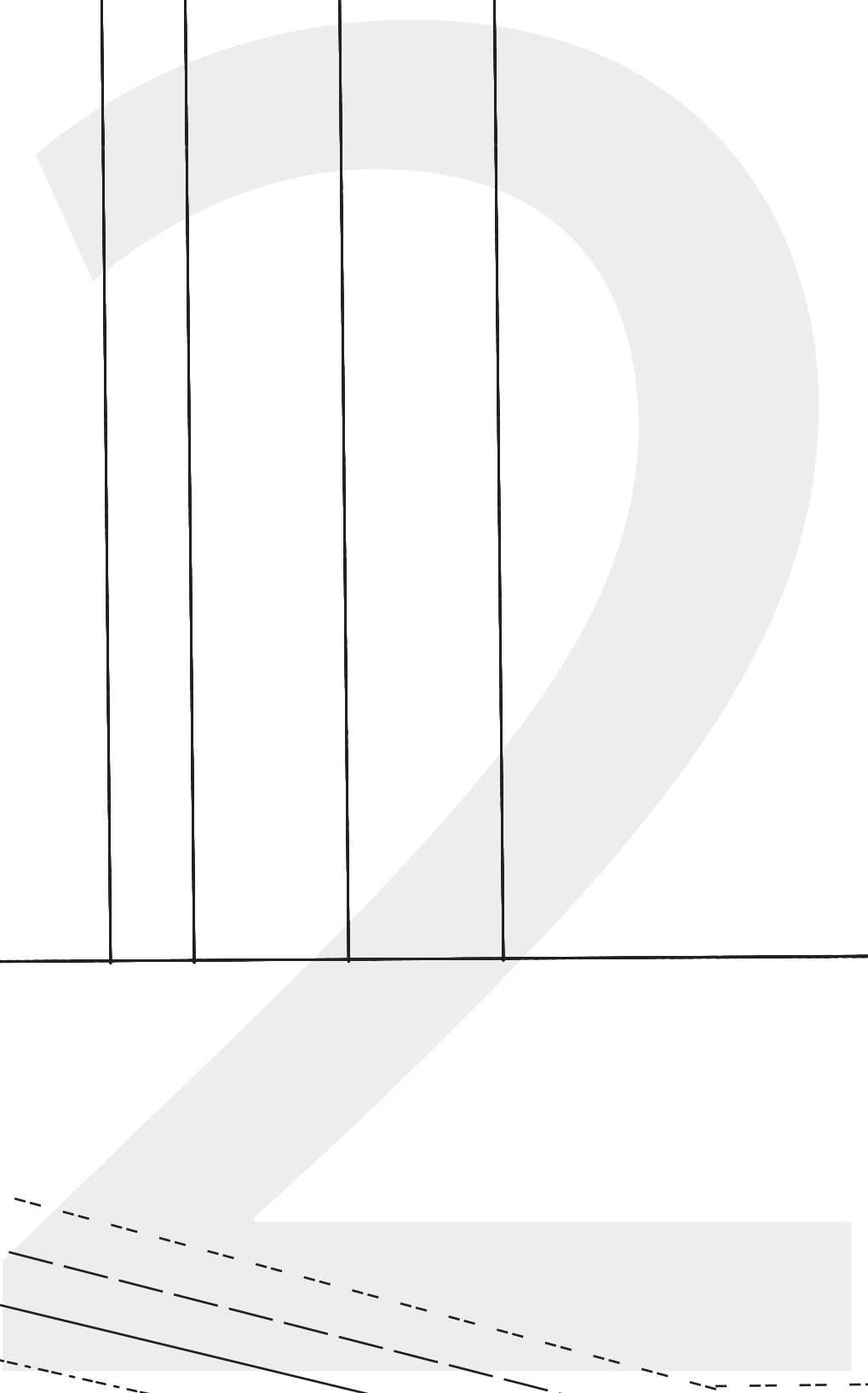
D Cup



PHOEBE DRESS #0722

2 FRONT - D CUP CUT 1 (6mm (1/4") seam allowance unless otherwise stated)

CENTRE FRONT FOLDLINE FOLDLINE CENTRE FRONT



PHOEBE DRESS #0722

3 SLEEVE CUT 2

(6mm (1/4") seam allowance unless otherwise stated)

CUT HERE BOW LENGTH HEM ALLOWANCE = 2.5 cms (1")

CUT HERE 3/4" LENGTH HEM ALLOWANCE = 2.5 cms (1")

CUT HERE FULL LENGTH HEM ALLOWANCE = 2.5 cms (1")

CUT HERE 72 cms (29") LENGTH HEM ALLOWANCE = 2cms (3/4")





PHOEBE DRESS  
#0722

**9**

PENCIL SKIRT  
BACK  
CUT 1 FOLD  
(6mm (1/4") seam allowance unless  
otherwise stated)

SHORTEN/LENGTHEN HERE

CUT HERE 55 cms (22") LENGTH  
HEM ALLOWANCE = 2.5 cms (1")

CUT HERE 60 cms (24") LENGTH  
HEM ALLOWANCE = 2.5 cms (1")

PHOEBE DRESS  
#0722

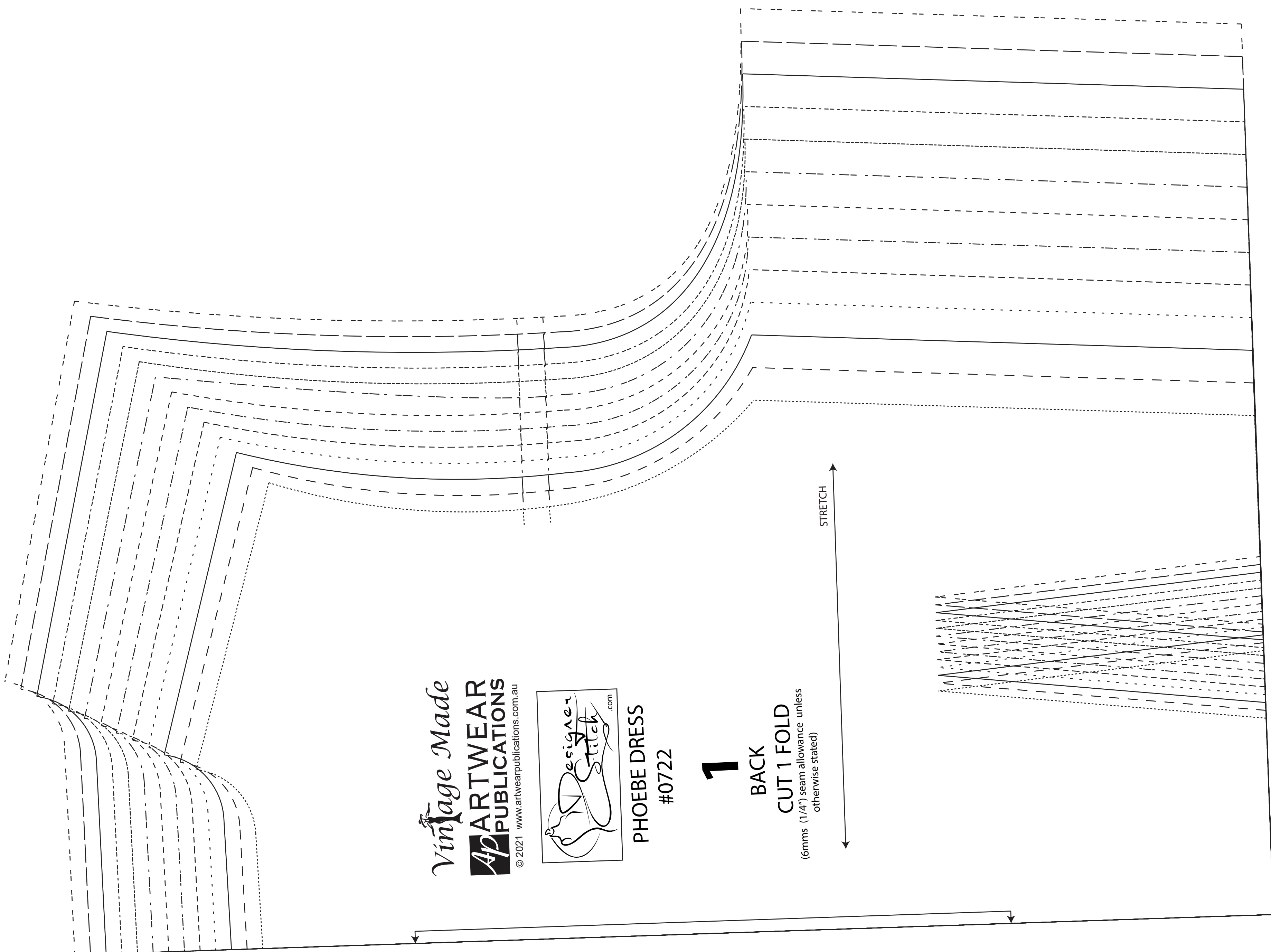
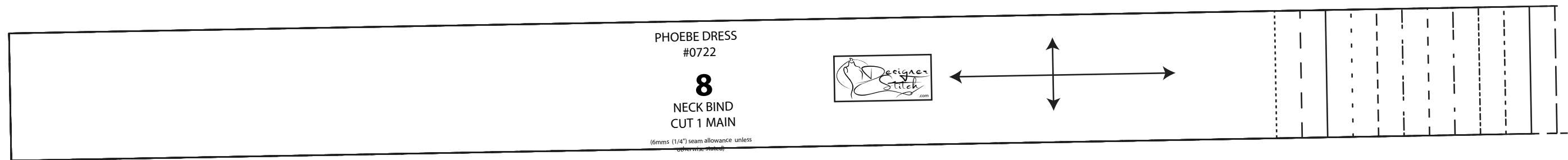
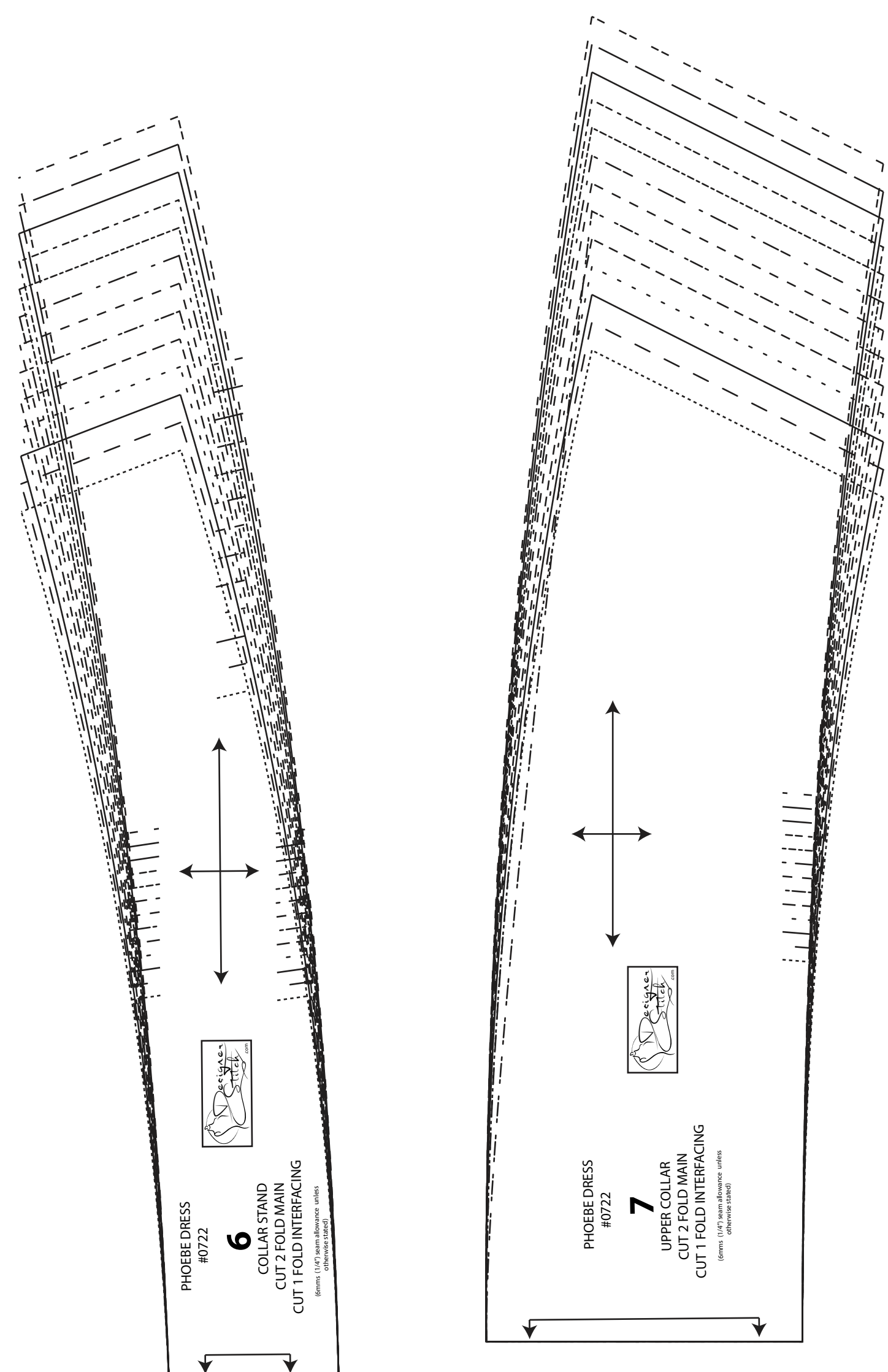
**10**

PENCIL SKIRT  
FRONT  
CUT 1 FOLD  
(6mm (1/4") seam allowance unless  
otherwise stated)

SHORTEN/LENGTHEN HERE

CUT HERE 55 cms (22") LENGTH  
HEM ALLOWANCE = 2.5 cms (1")

CUT HERE 60 cms (24") LENGTH  
HEM ALLOWANCE = 2.5 cms (1")



SIZE KEY

- 1
- 2
- 3
- 4
- 5
- 6
- 7
- 8
- 9
- 10
- 11
- 12
- 13

Vintage Made  
ARTWEAR  
PUBLICATIONS  
© 2021 www.artwearpublishings.com.au



PHOEBE DRESS  
#0722