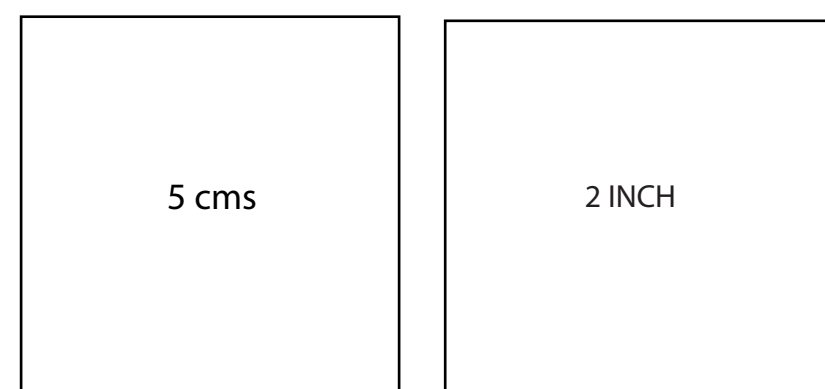




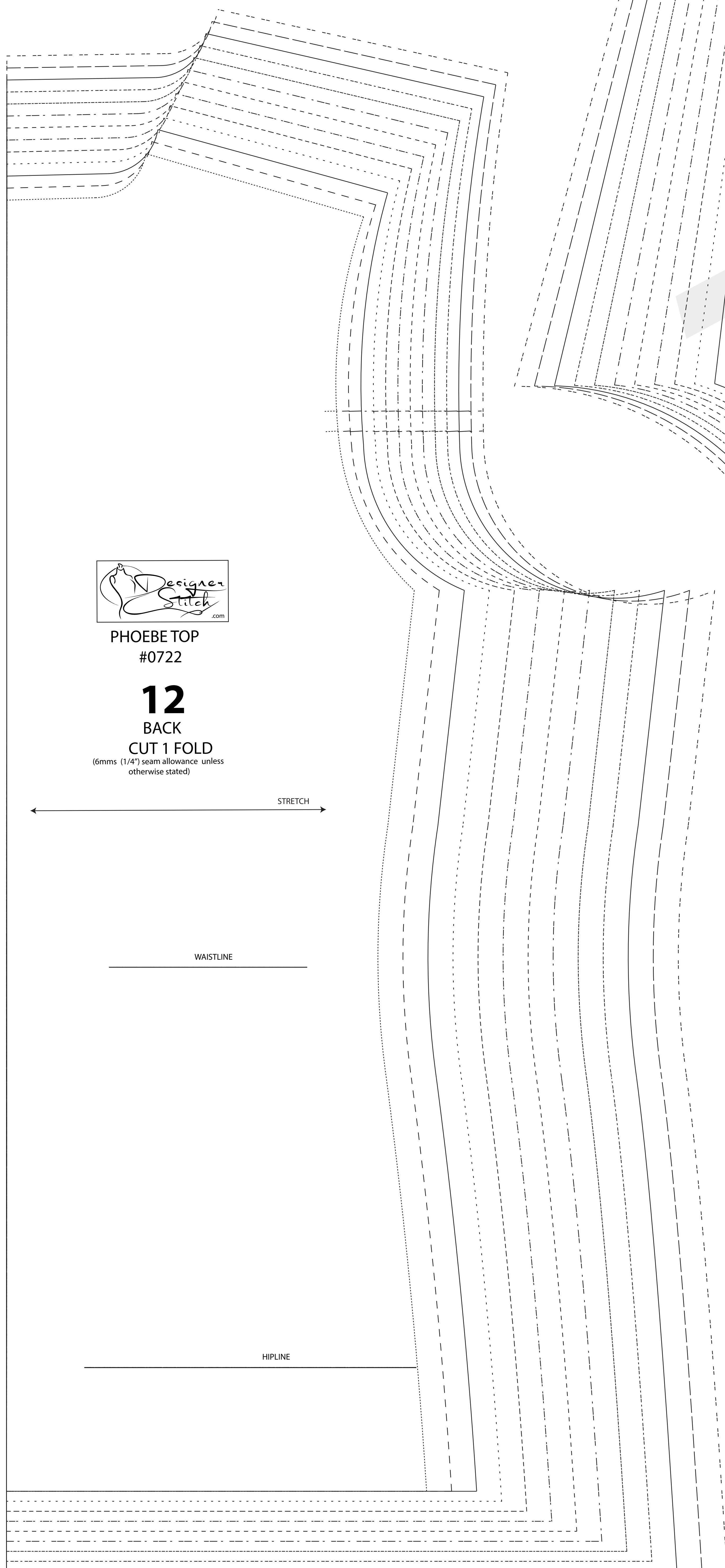
PHOEBE TOP
#0722



C Cup

SIZE KEY

- 1 (dash-dot)
- 2 - - - - (dashed)
- 3 ———— (solid)
- 4 (dash-dot)
- 5 - - - - (dashed)
- 6 ———— (solid)
- 7 (dash-dot)
- 8 - - - - (dashed)
- 9 ———— (solid)
- 10 (dash-dot)
- 11 - - - - (dashed)
- 12 ———— (solid)
- 13 (dash-dot)



PHOEBE TOP
#0722

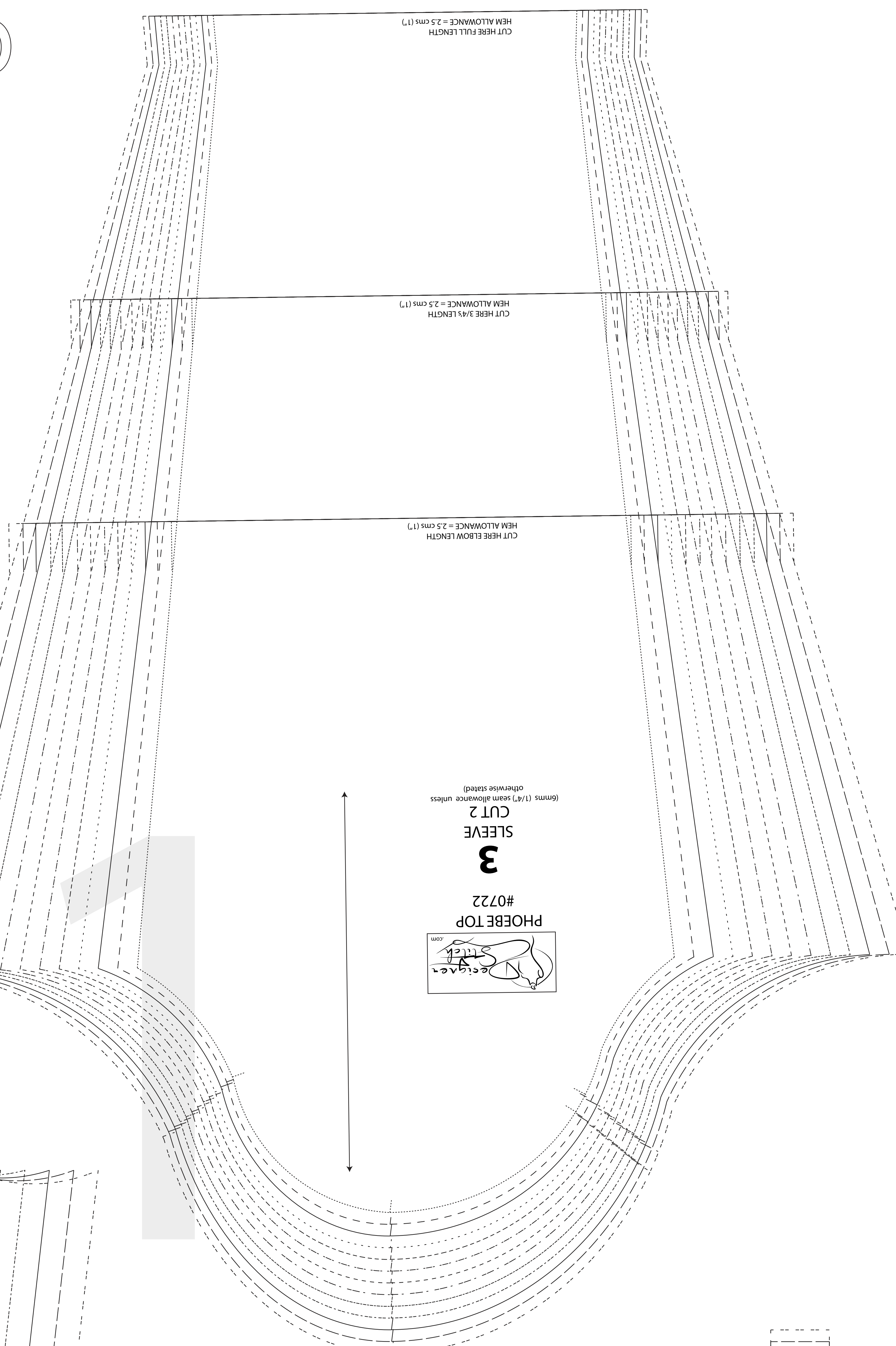
12
BACK

CUT 1 FOLD
(6mms (1/4") seam allowance unless otherwise stated)

STRETCH

WAISTLINE

HIPLINE



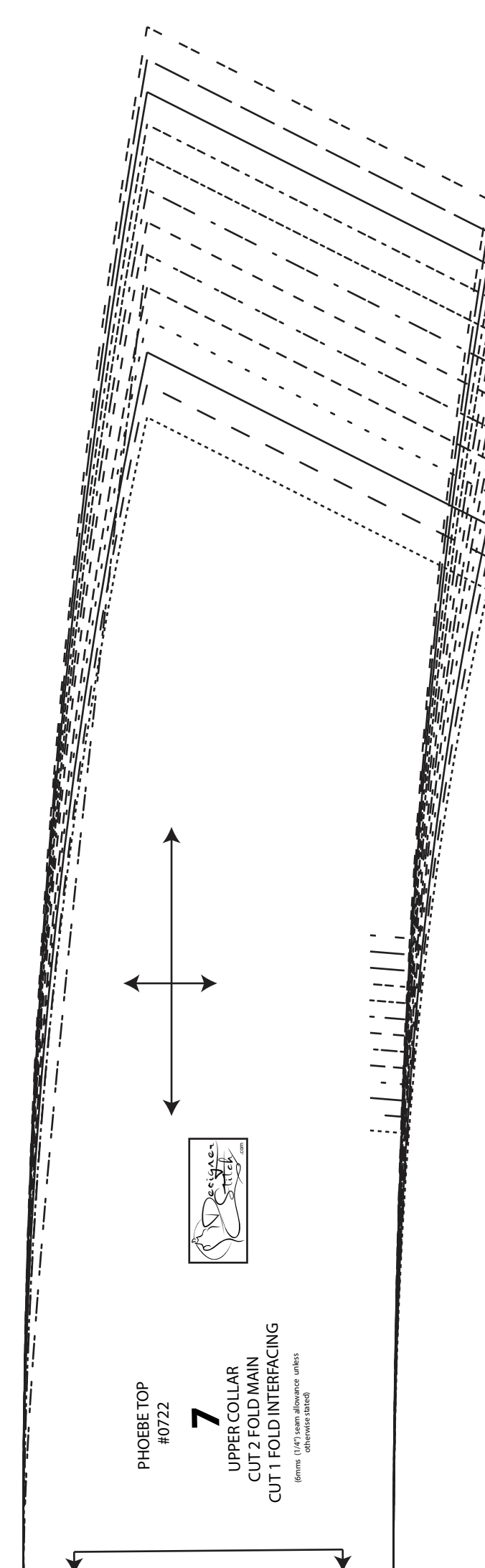
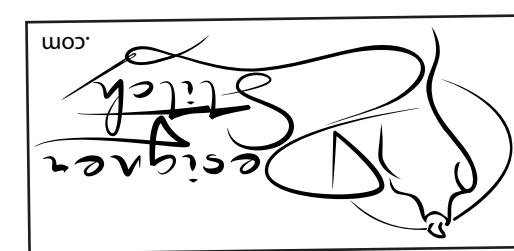
(6mms (1/4") seam allowance unless otherwise stated)
CUT 2

SLEEVE

3

#0722

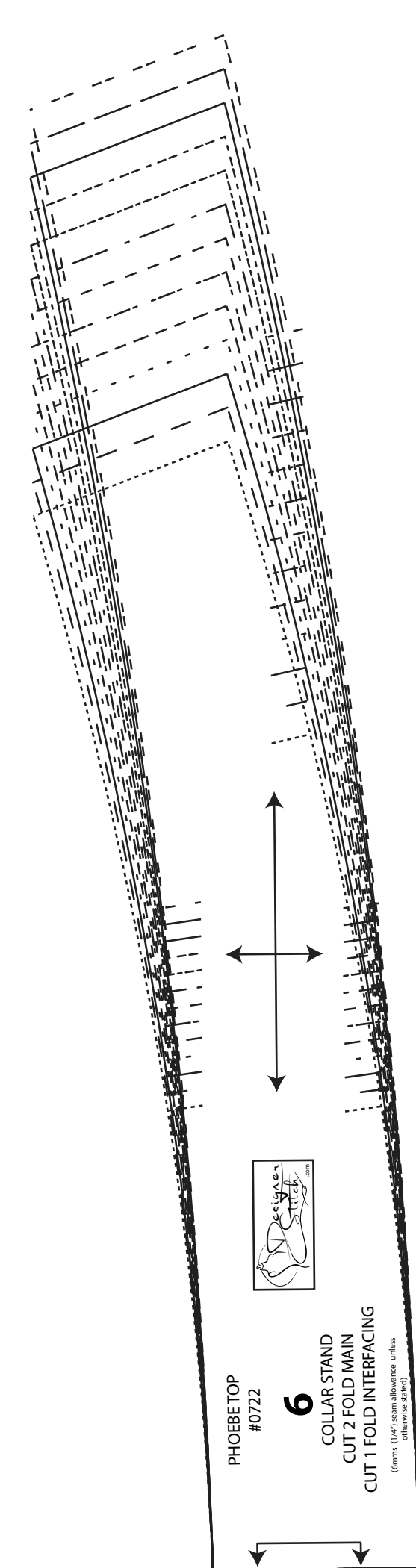
PHOEBE TOP



PHOEBE TOP
#0722

7

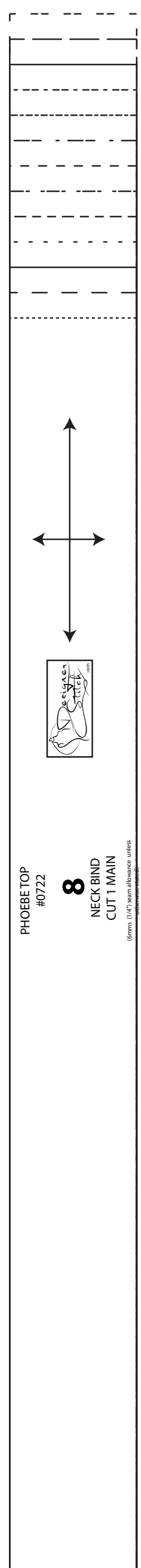
COLLAR STAND
CUT 2 FOLD INTERFACING
CUT 1 FOLD INTERFACING



PHOEBE TOP
#0722

6

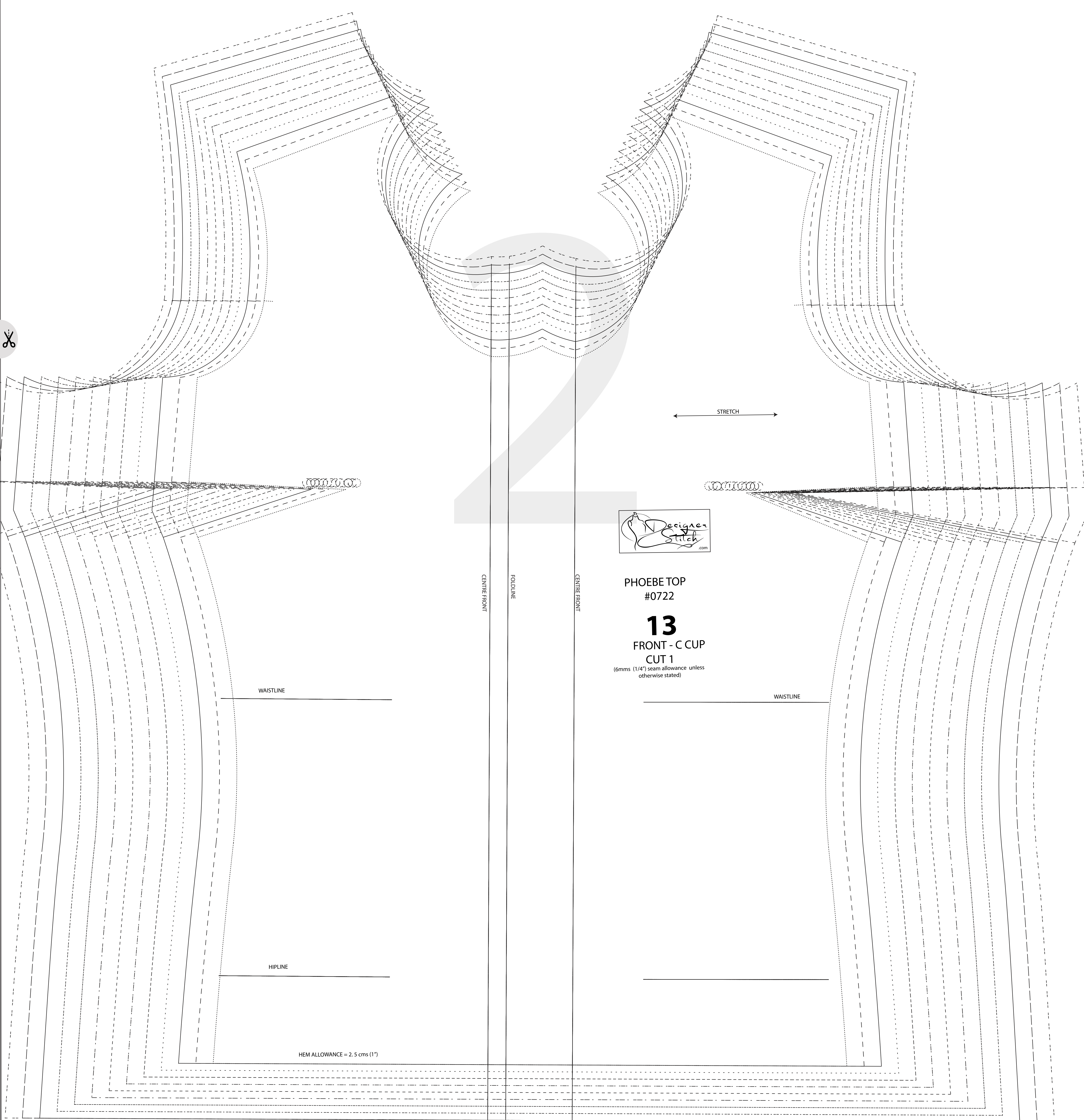
COLLAR STAND
CUT 2 FOLD INTERFACING
CUT 1 FOLD INTERFACING



PHOEBE TOP
#0722

8

COLLAR STAND
CUT 2 FOLD INTERFACING
CUT 1 FOLD INTERFACING



PHOEBETOP #0722
13
 FRONT - C CUP
 CUT 1
 (6mm (1/4") seam allowance unless otherwise stated)

WAISTLINE

WAISTLINE

HIPLINE

HEM ALLOWANCE = 2.5 cms (1")

CENTRE FRONT

FOULINE

CENTRE FRONT

STRETCH

