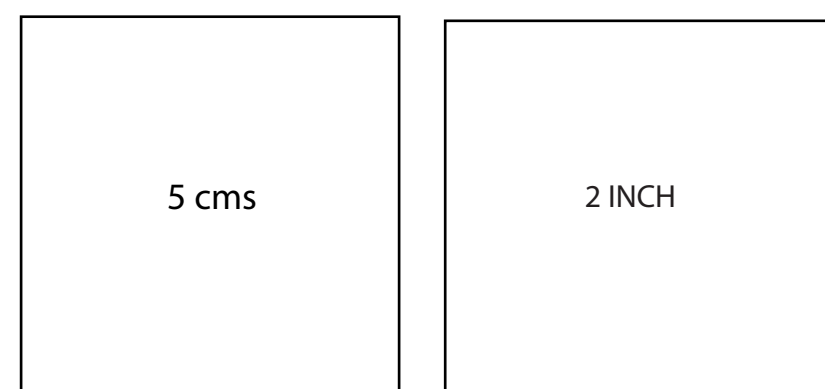




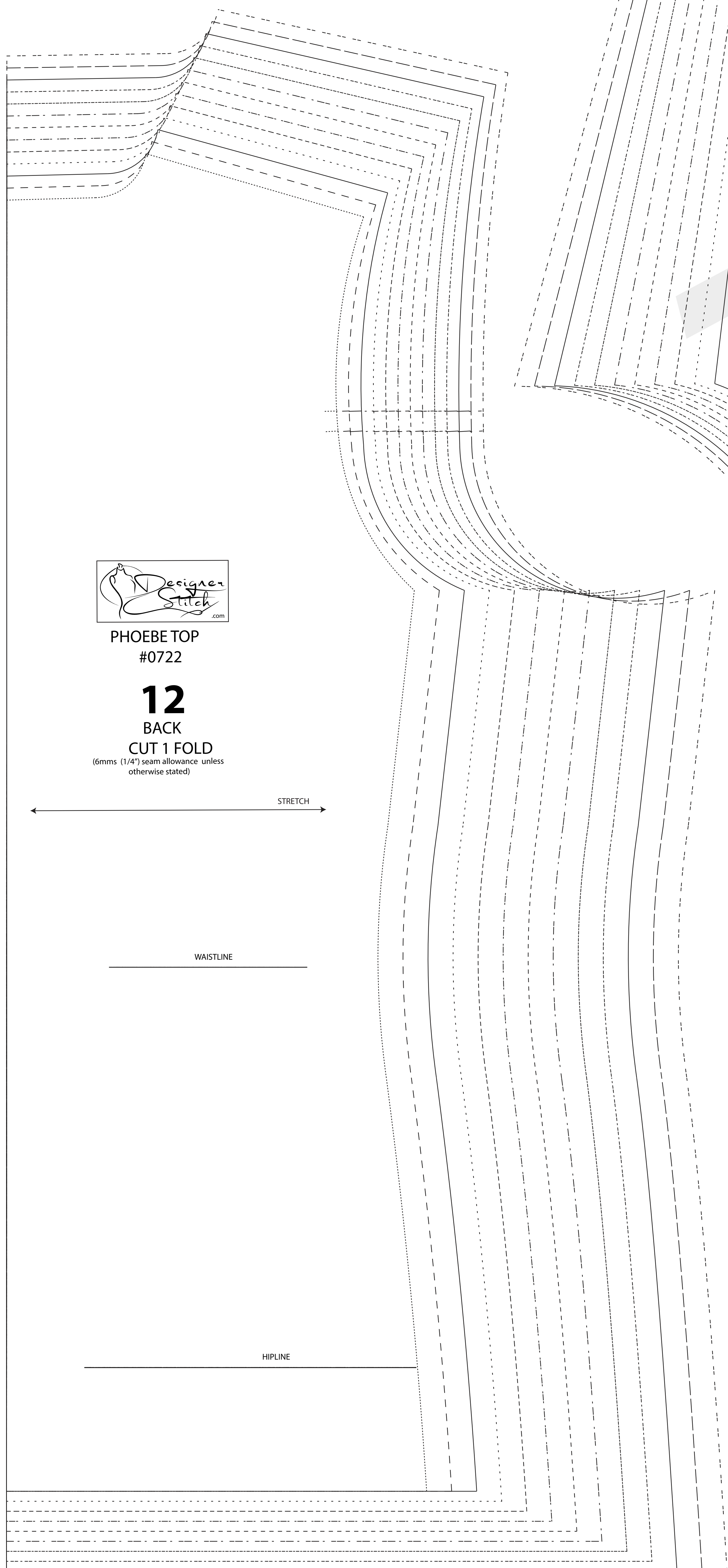
PHOEBE TOP
#0722



D Cup

SIZE KEY

- 1 (dash-dot)
- 2 - - - - (dashed)
- 3 _____ (solid)
- 4 (dash-dot)
- 5 - - - - (dashed)
- 6 _____ (solid)
- 7 (dash-dot)
- 8 - - - - (dashed)
- 9 _____ (solid)
- 10 (dash-dot)
- 11 - - - - (dashed)
- 12 _____ (solid)
- 13 (dash-dot)



PHOEBE TOP
#0722

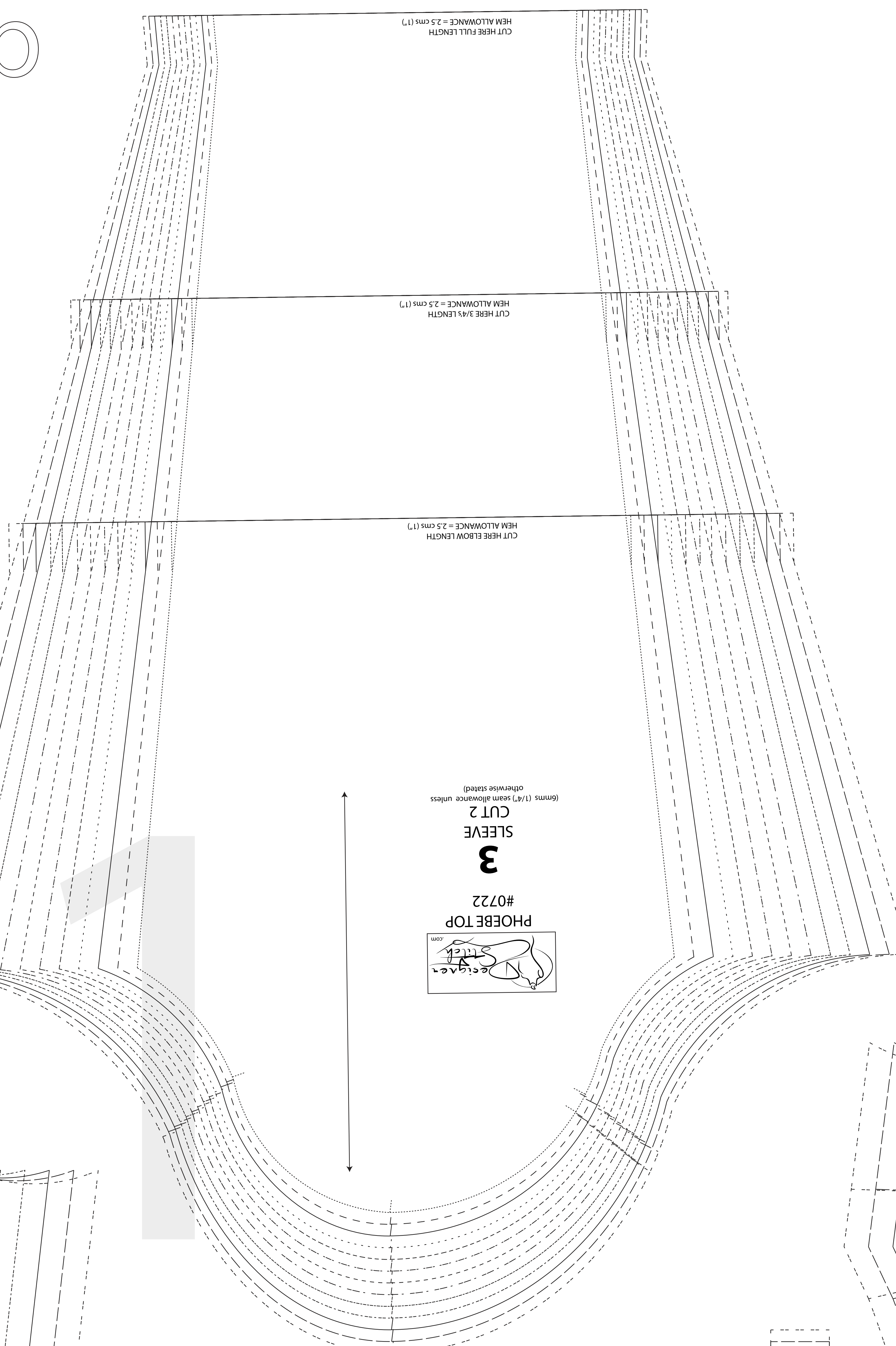
12
BACK

CUT 1 FOLD
(6mms (1/4") seam allowance unless otherwise stated)

STRETCH

WAISTLINE

HIPLINE



(6mms (1/4") seam allowance unless otherwise stated)

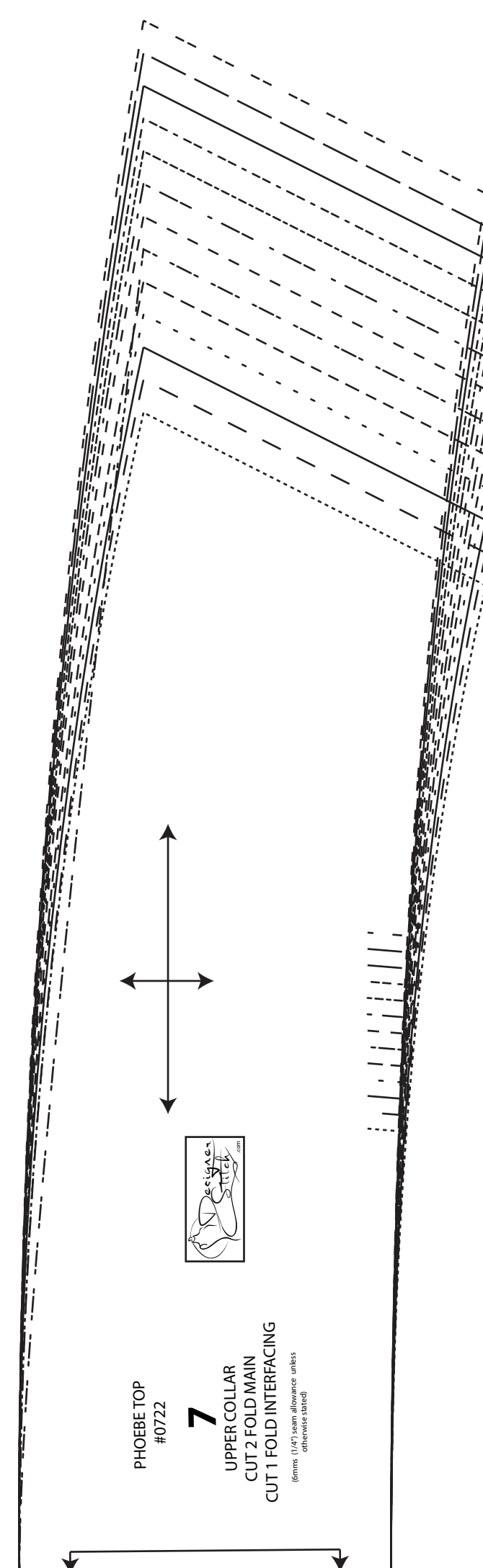
CUT 2

SLEEVE

3

#0722

PHOEBE TOP



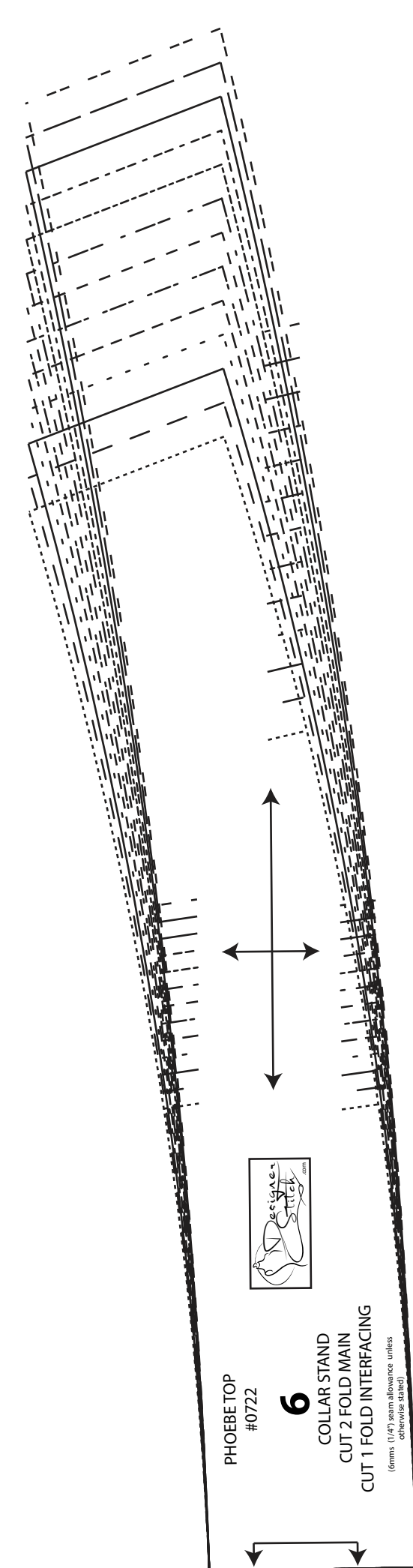
PHOEBE TOP
#0722

7

UPPER COLLAR

CUT 1 FOLD INTERFACING

(6mm (1/4") seam allowance unless otherwise stated)



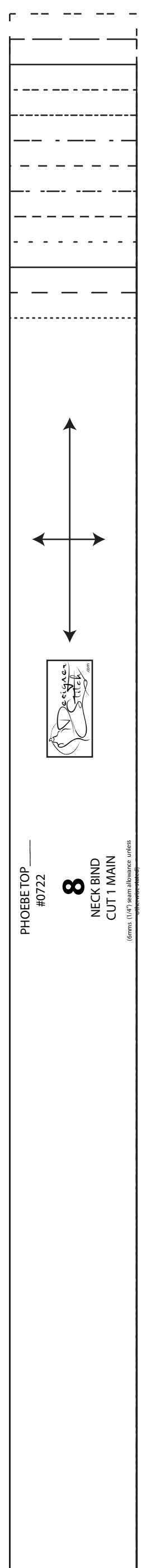
PHOEBE TOP
#0722

6

COLLAR STAND

CUT 2 FOLD INTERFACING

(6mm (1/4") seam allowance unless otherwise stated)



PHOEBE TOP
#0722

8

NECKBAND

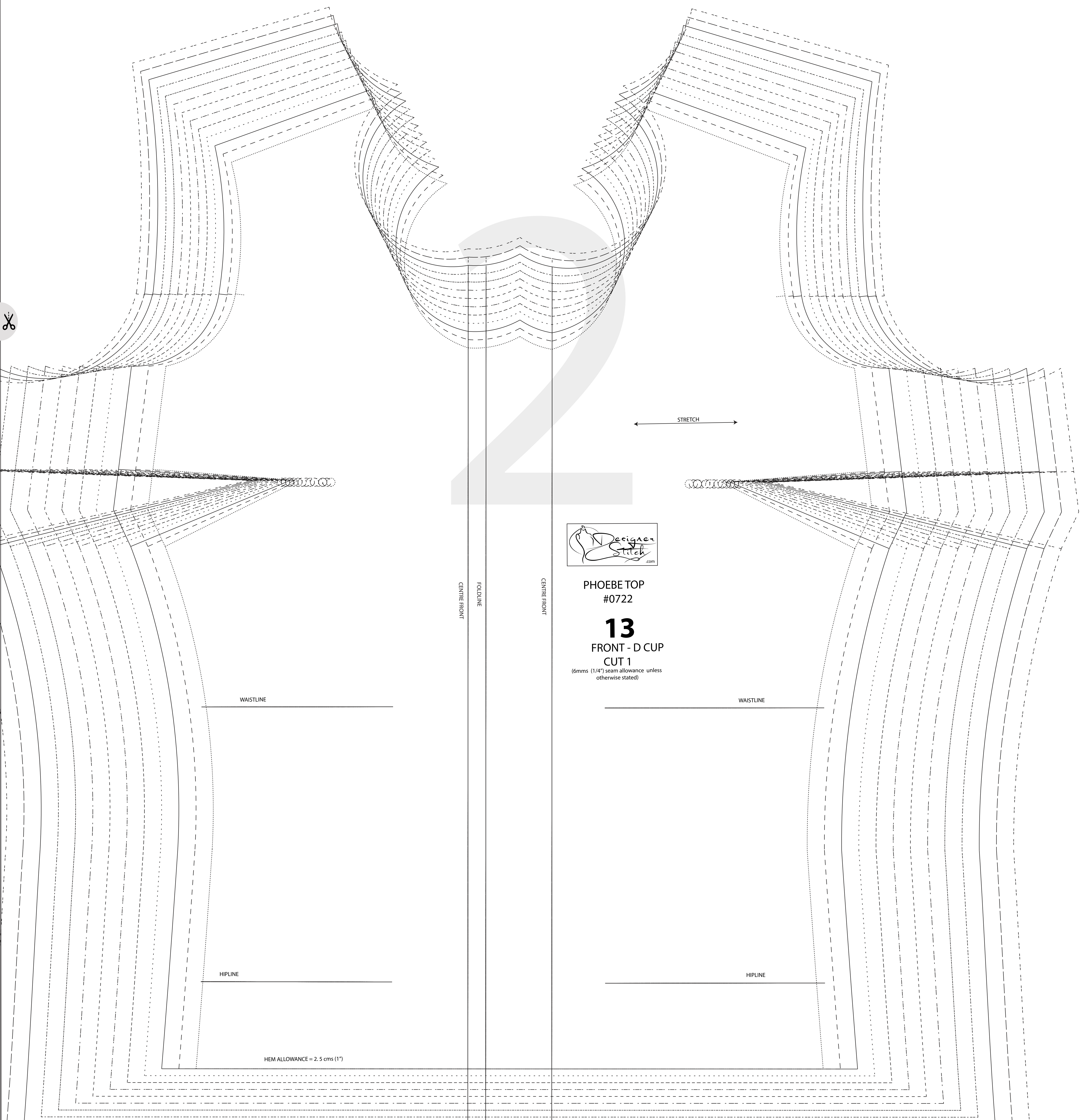
CUT 1 MARK

(6mm (1/4") seam allowance unless otherwise stated)



PHOEBE DRESS
#0722

11
ARMHOLE BIND
CUT 2



← STRETCH →



PHOEBE TOP
#0722

13
FRONT - D CUP
CUT 1

(6mm (1/4") seam allowance unless otherwise stated)

CENTRE FRONT

FOLDLINE

CENTRE FRONT

WAISTLINE

WAISTLINE

HIPLINE

HIPLINE

HEM ALLOWANCE = 2.5 cms (1")