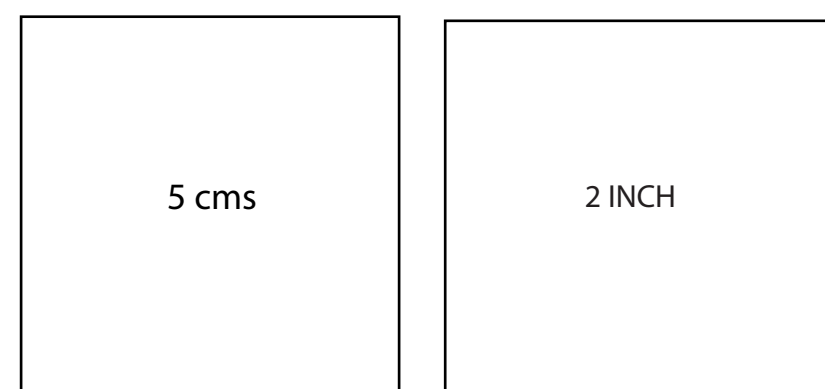




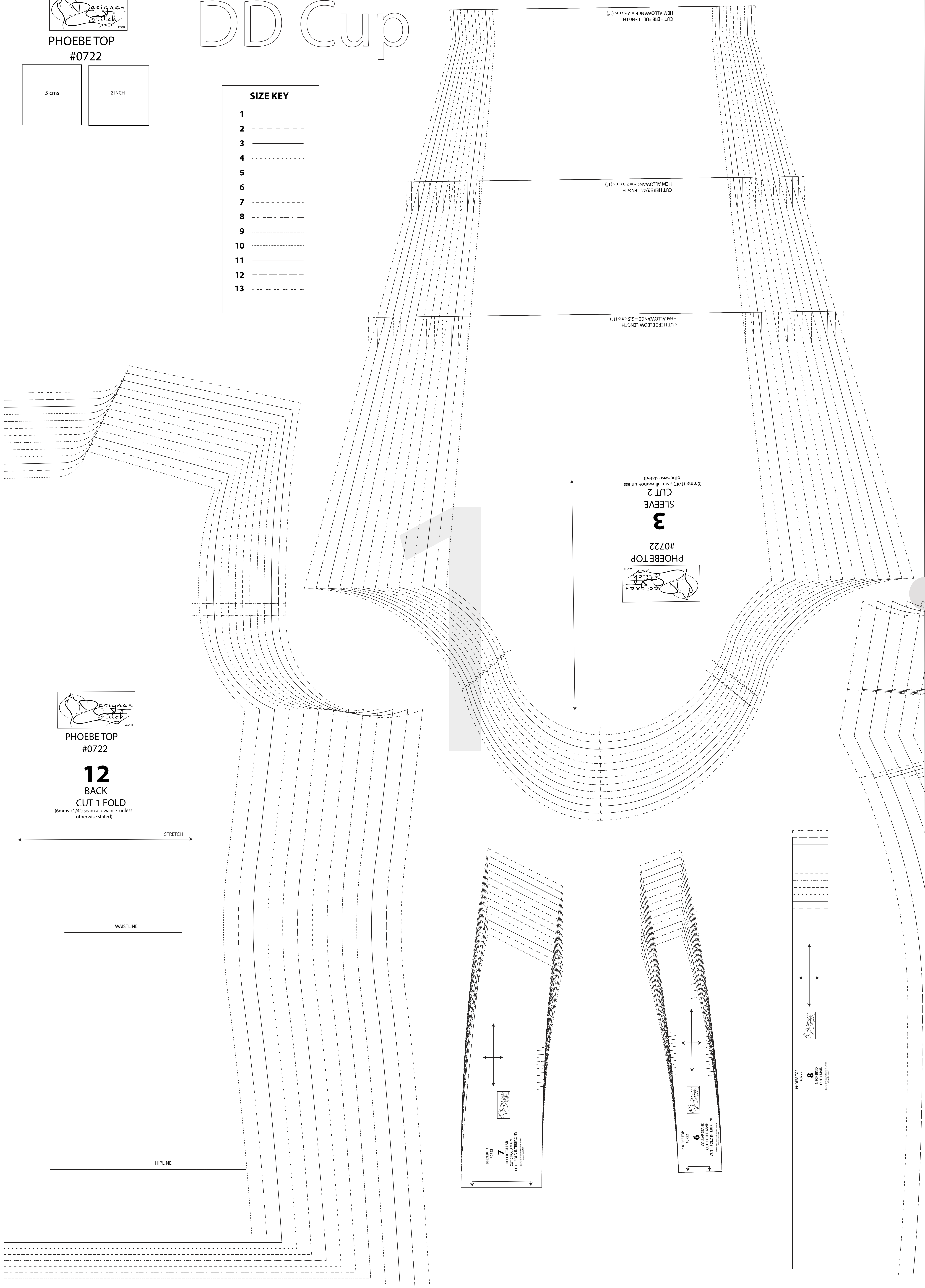
PHOEBE TOP
#0722



DD Cup

SIZE KEY

- 1 (dash-dot)
- 2 - - - - (dashed)
- 3 _____ (solid)
- 4 (dash-dot)
- 5 - - - - (dashed)
- 6 _____ (solid)
- 7 (dash-dot)
- 8 - - - - (dashed)
- 9 _____ (solid)
- 10 (dash-dot)
- 11 - - - - (dashed)
- 12 _____ (solid)
- 13 (dash-dot)



CUT HERE FULL LENGTH
HEM ALLOWANCE = 2.5 cms (1")

CUT HERE 3/4S LENGTH
HEM ALLOWANCE = 2.5 cms (1")

CUT HERE ELBOW LENGTH
HEM ALLOWANCE = 2.5 cms (1")

PHOEBE TOP
#0722
3
SLEEVE
CUT 2
(6mms (1/4") seam allowance unless otherwise stated)



PHOEBE TOP
#0722

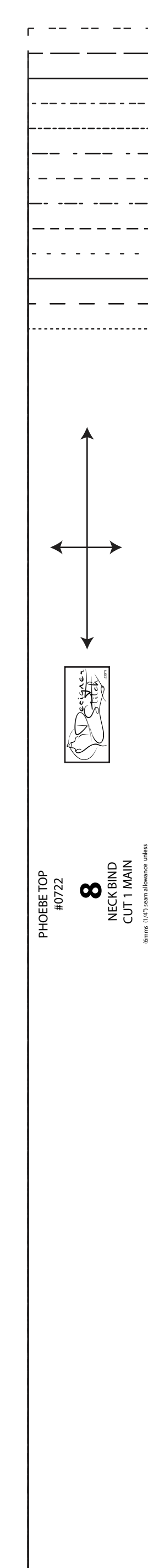
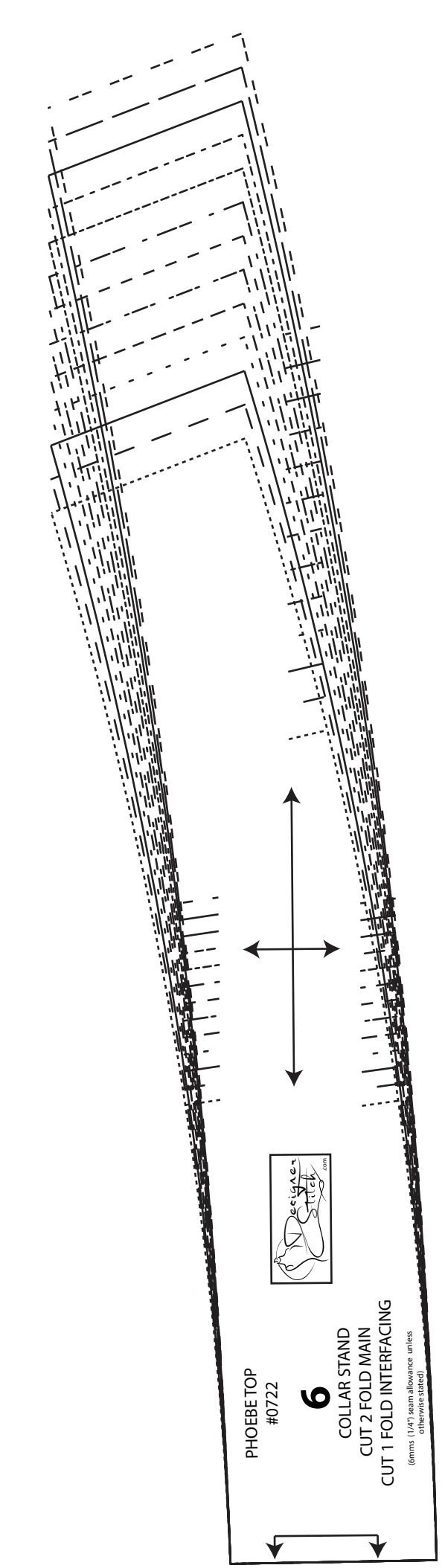
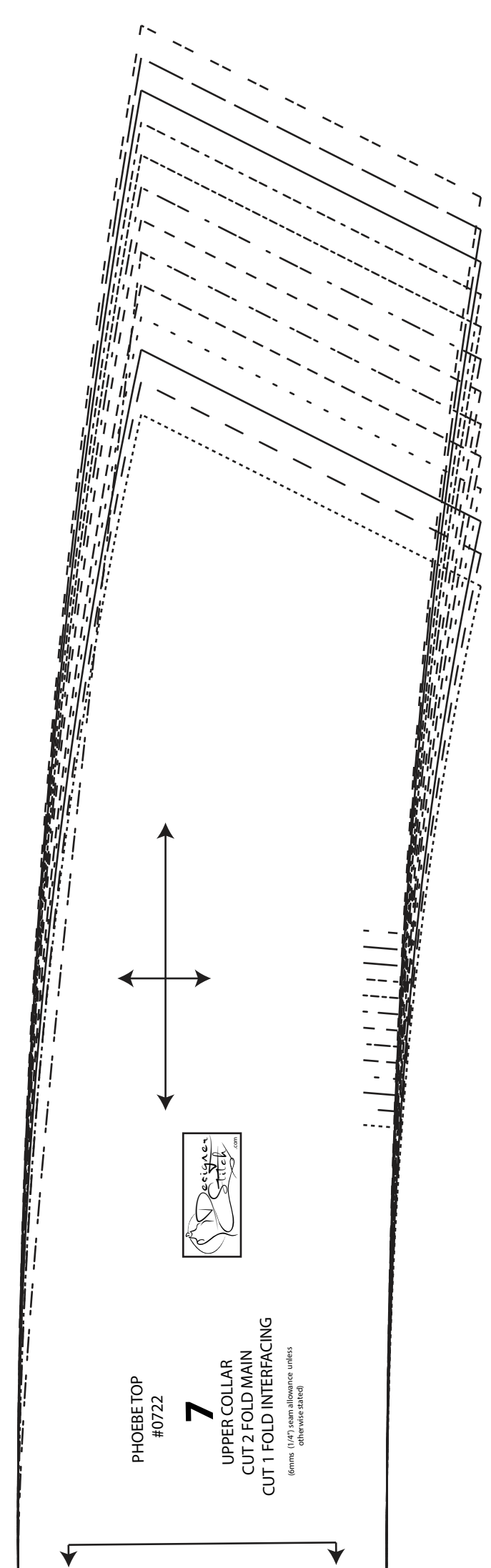
12
BACK

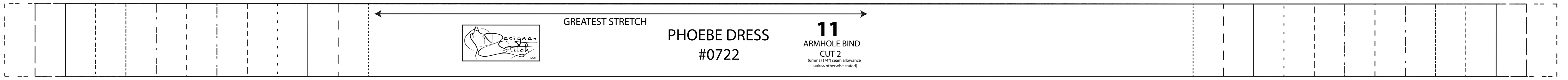
CUT 1 FOLD
(6mms (1/4") seam allowance unless otherwise stated)

STRETCH

WAISTLINE

HIPLINE

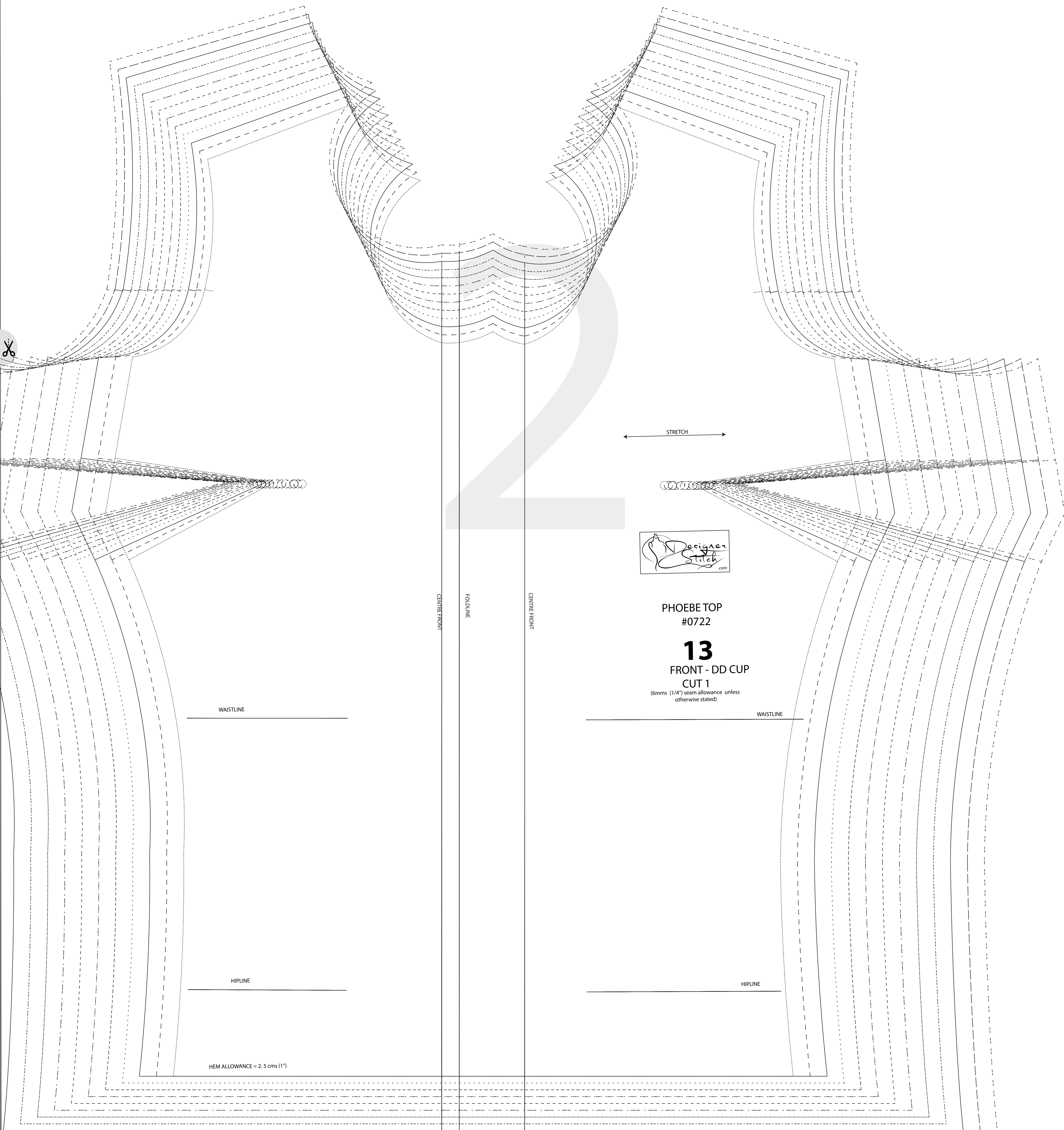




GREATEST STRETCH

PHOEBE DRESS
#0722

11
ARMHOLE BIND
CUT 2



PHOEBE TOP
#0722

13
FRONT - DD CUP
CUT 1
(6mm (1/4") seam allowance unless
otherwise stated)

WAISTLINE

WAISTLINE

HIPLINE

HIPLINE

HEM ALLOWANCE = 2.5 cms (1")