



GRETA DRESS #1022

5cms square

2 inch square



GRETA DRESS #1022

1

BACK

CUT 1 FOLD
(6 mms (1/4") seam allowance unless otherwise stated)

STRETCH



GRETA DRESS #1022

3

FRONT - B/C Cup

CUT 1 FOLD
(6 mms (1/4") seam allowance unless otherwise stated)

STRETCH



GRETA DRESS #1022

8

NECKLINE BIND CUT 1

STRETCH

CUT HERE FOR 100 cms (39 1/2") LENGTH - HEM ALLOWANCE = 3 cms (1 1/4")

LENGTHEN/SHORTEN HERE

CUT HERE FOR 80cms (31 1/2") LENGTH - HEM ALLOWANCE = 3 cms (1 1/4")

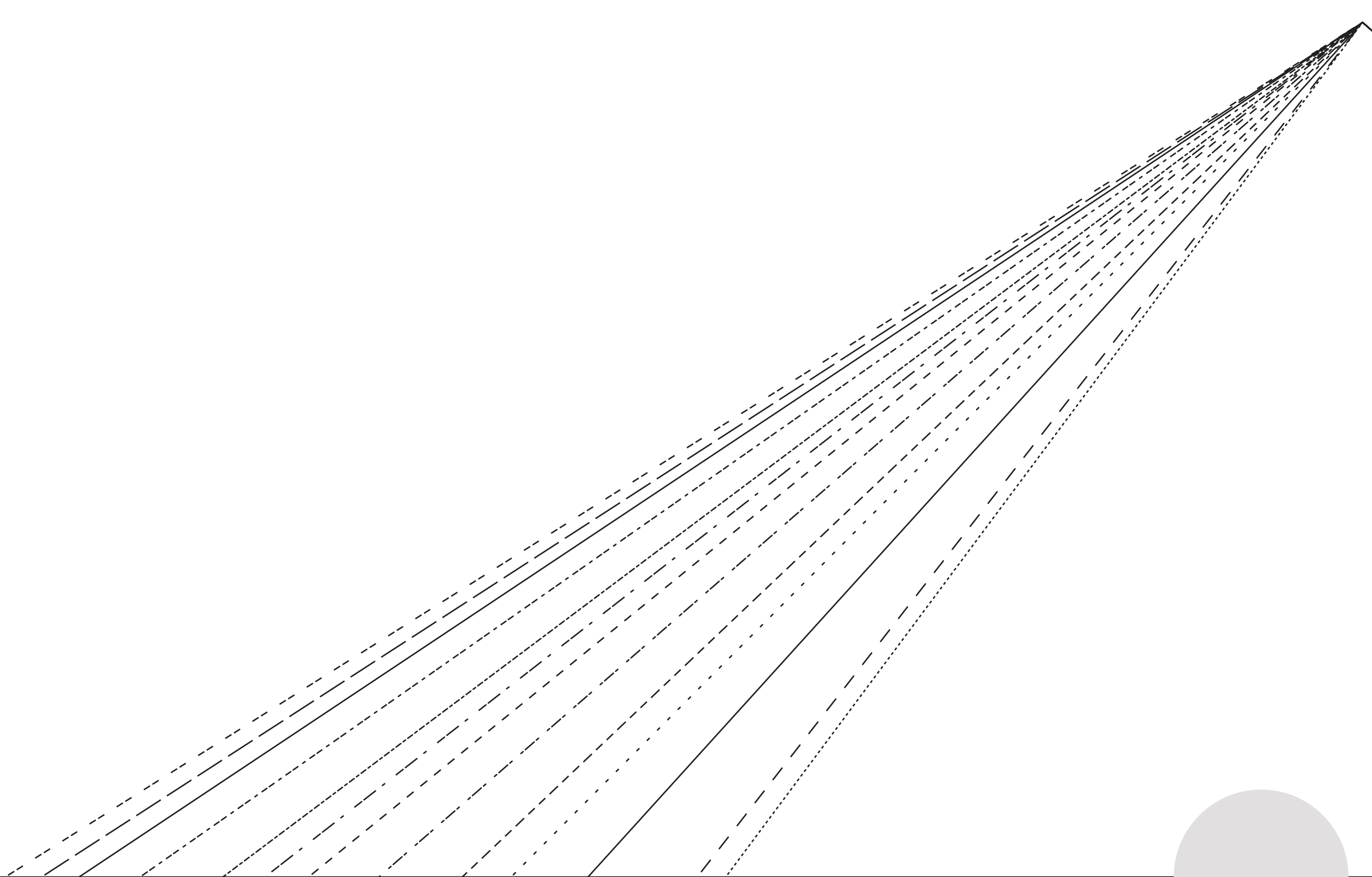
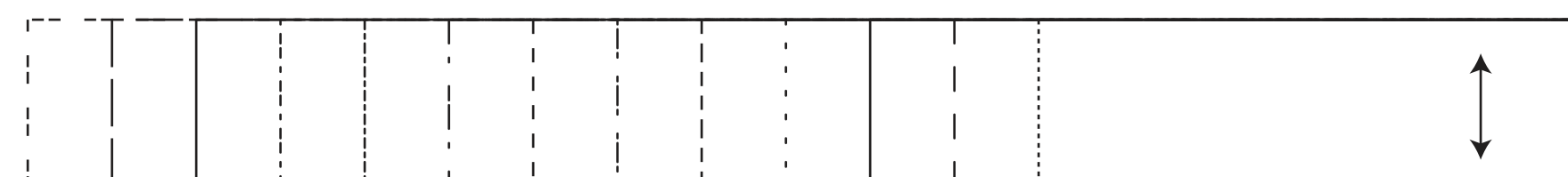
GRETA DRESS #1022

2

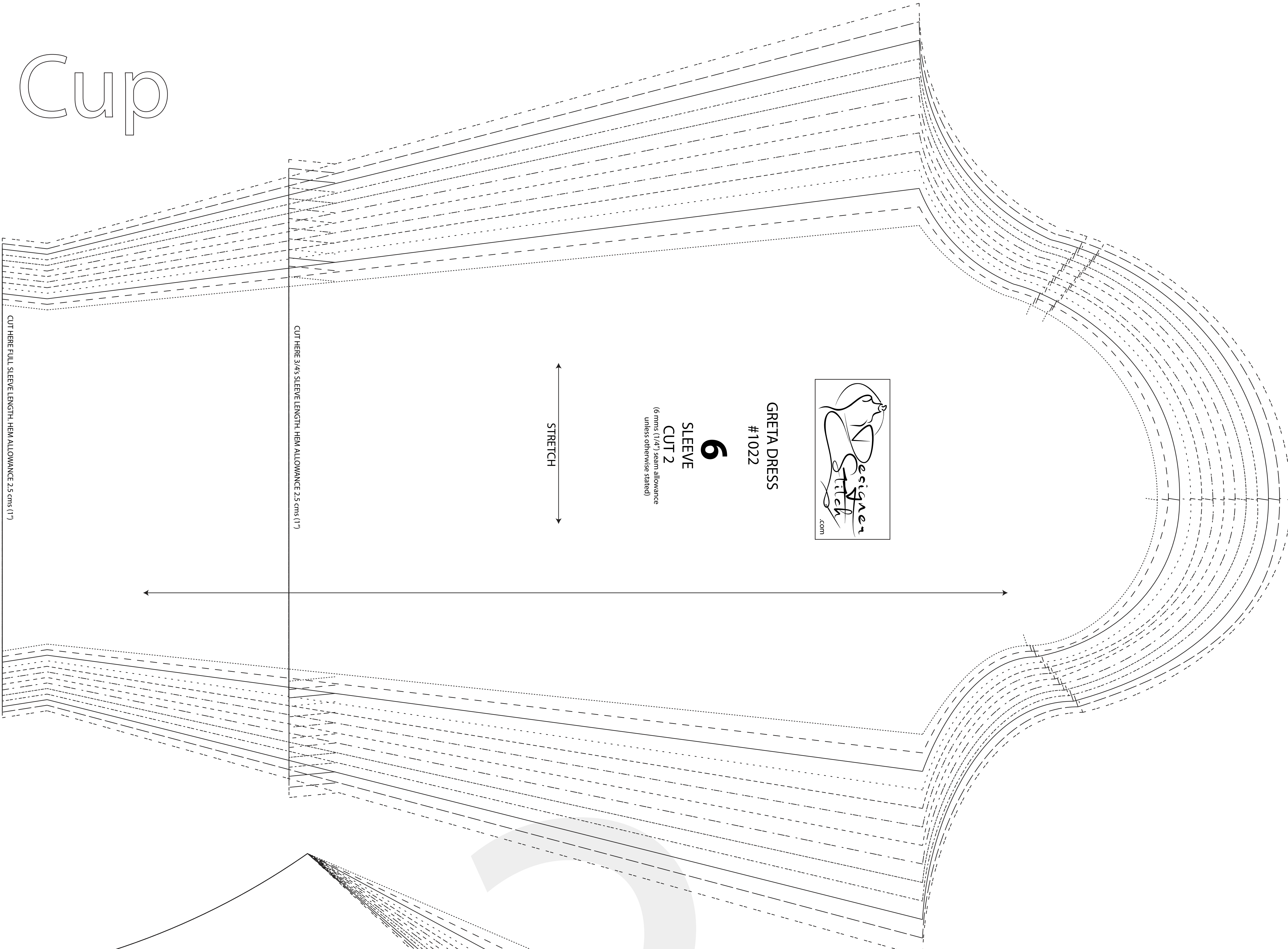
BACK SKIRT

CUT 2

(6 mms (1/4") seam allowance unless otherwise stated)



B/C Cup



GRETA DRESS
#1022

6
SLEEVE
CUT 2
(6 cms (1 1/4") seam allowance
unless otherwise stated)

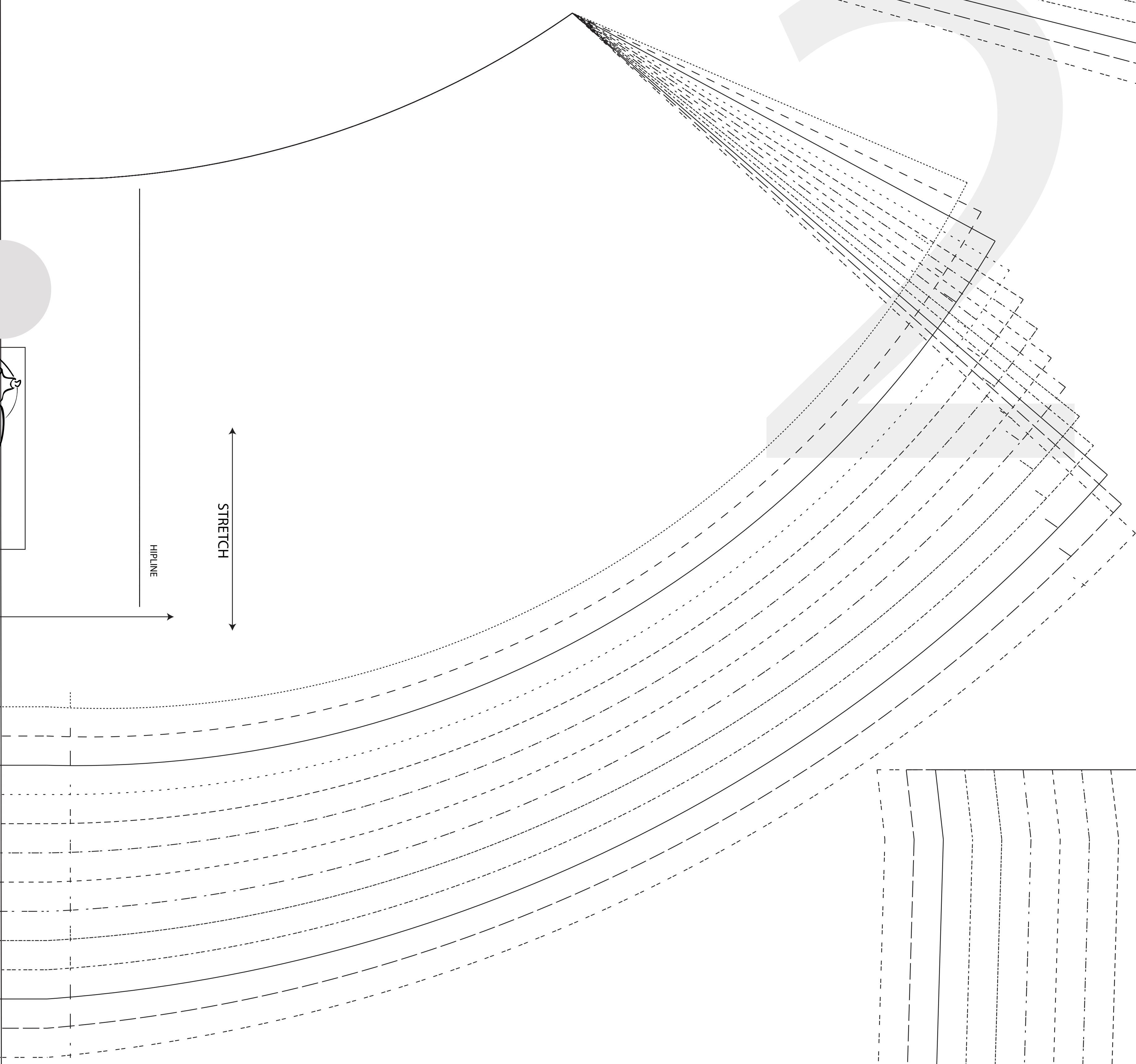
STRETCH

CUT HERE FULL SLEEVE LENGTH, HEM ALLOWANCE 2.5 cms (1")

CUT HERE 3/4S SLEEVE LENGTH, HEM ALLOWANCE 2.5 cms (1")

SIZE KEY

- 1 (dash-dot)
- 2 (dashed)
- 3 (solid)
- 4 (dash-dot)
- 5 (dashed)
- 6 (solid)
- 7 (dash-dot)
- 8 (dashed)
- 9 (solid)
- 10 (dash-dot)
- 11 (dashed)
- 12 (solid)
- 13 (dash-dot)
- 14 (dashed)

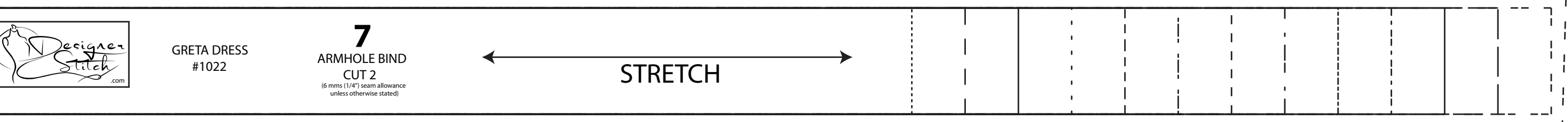


STRETCH

HIP LINE

CUT HERE FOR 100 cms (39 1/2") LENGTH, HEM ALLOWANCE = 3 cms (1 1/4")

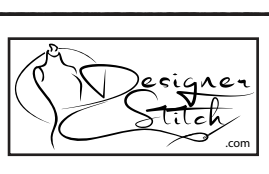
LENGTHEN/SHORTEN HERE



STRETCH

7
ARMHOLE BIND
CUT 2
(6 cms (1 1/4") seam allowance
unless otherwise stated)

GRETA DRESS
#1022





GRETA DRESS
#1022

4
FRONT SKIRT
FULL LENGTH
CUT 1 RIGHT SIDE UP
(6 mm (1/4") seam allowance
unless otherwise stated)

← STRETCH →

CUT TO HERE

3

LENGTHEN/SHORTEN HERE



CUT HERE FOR 100 cms (39 1/2") LENGTH HEM ALLOWANCE = 3

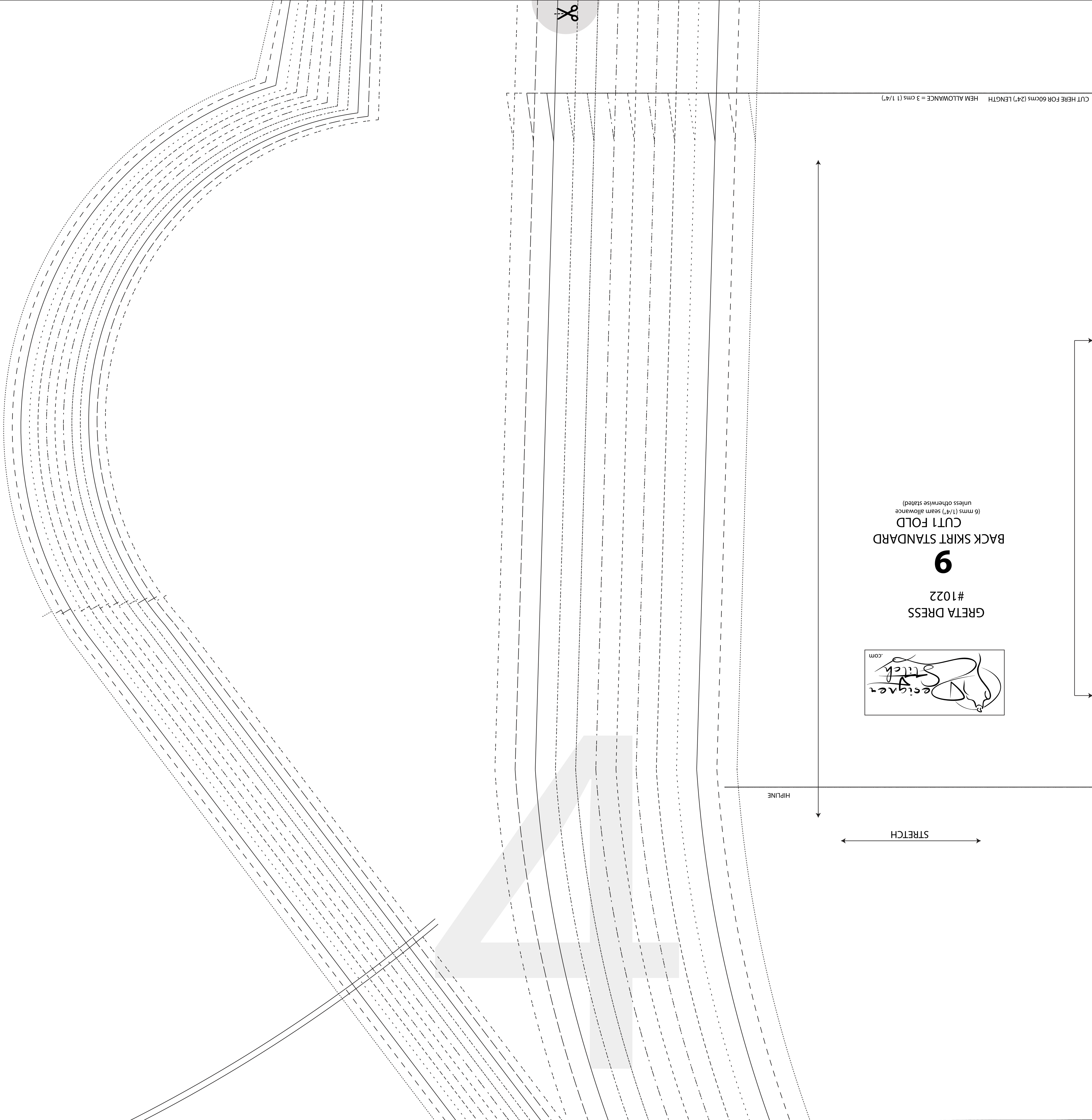
CUT HERE FOR 60cms (24") LENGTH HEM ALLOWANCE = 3 cms (1 1/4")

GRETA DRESS
#1022
9
BACK SKIRT STANDARD
CUT1 FOLD
(6 cms (1 1/4") seam allowance
unless otherwise stated)

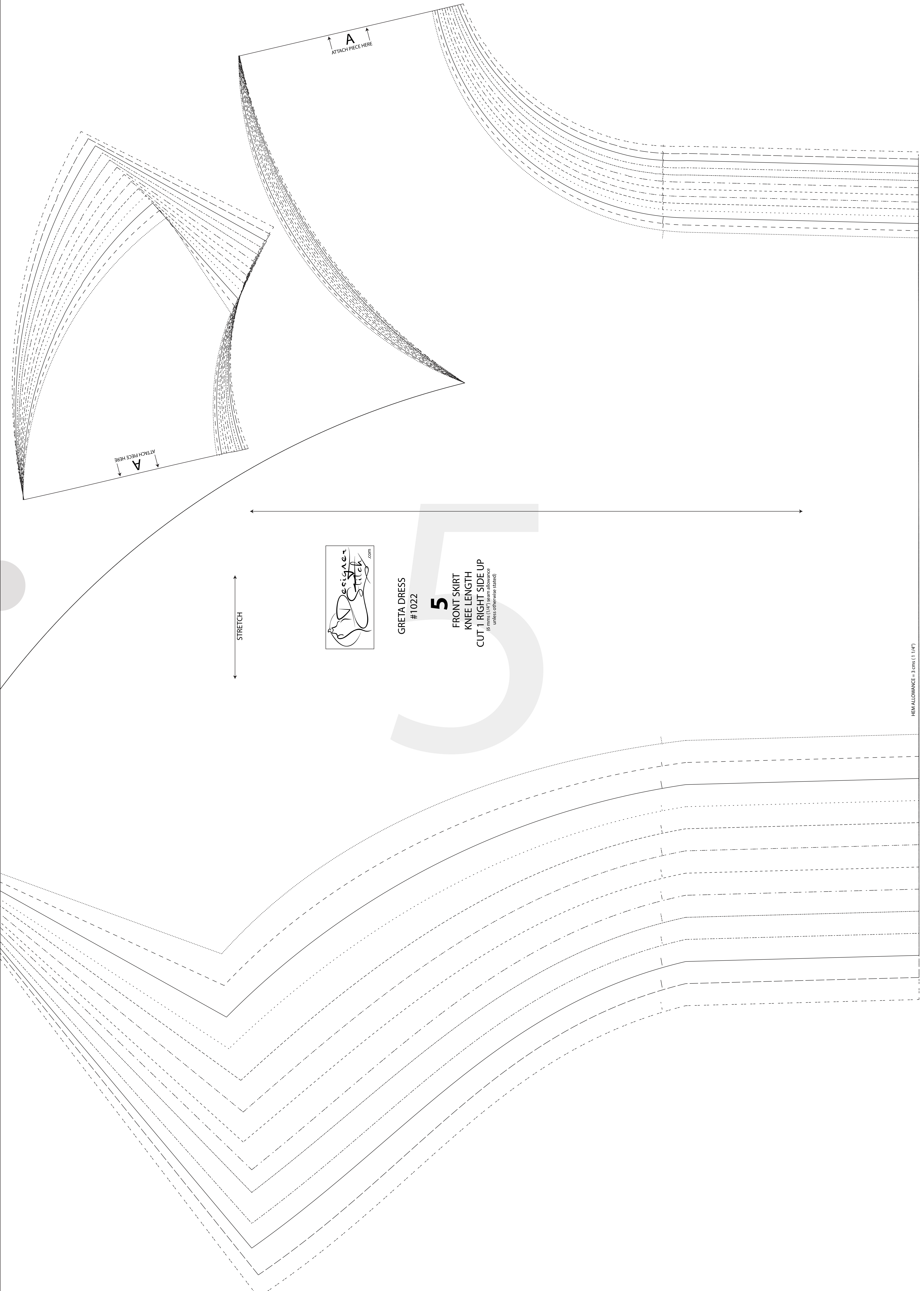


HIPLINE

STRETCH



cms (1 1/4")



GRETA DRESS
#1022

5

FRONT SKIRT
KNEE LENGTH
CUT 1 RIGHT SIDE UP
(6 mm (1/4") seam allowance
unless otherwise stated)

HEM ALLOWANCE = 3 cms (1 1/4")