



GRETA DRESS #1022

5cms square

2 inch square



GRETA DRESS #1022

1

BACK
CUT 1 FOLD
(6 mms (1/4") seam allowance unless otherwise stated)

STRETCH



GRETA DRESS #1022

3

FRONT - DD Cup
CUT 1 FOLD
(6 mms (1/4") seam allowance unless otherwise stated)

STRETCH



GRETA DRESS #1022

8

NECKLINE BIND
CUT 1

STRETCH



GRETA DRESS #1022

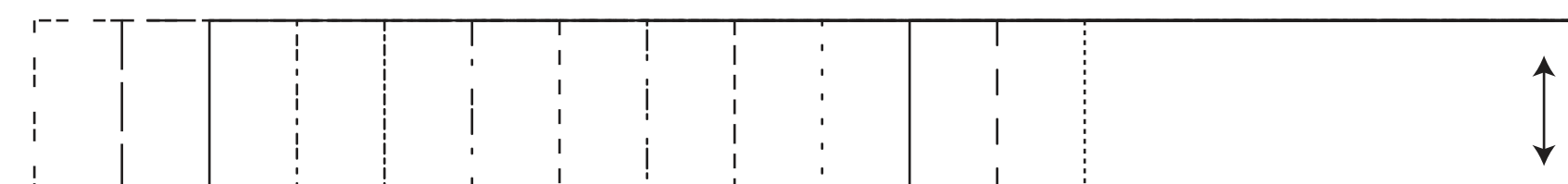
2

BACK SKIRT
CUT 2
(6 mms (1/4") seam allowance unless otherwise stated)

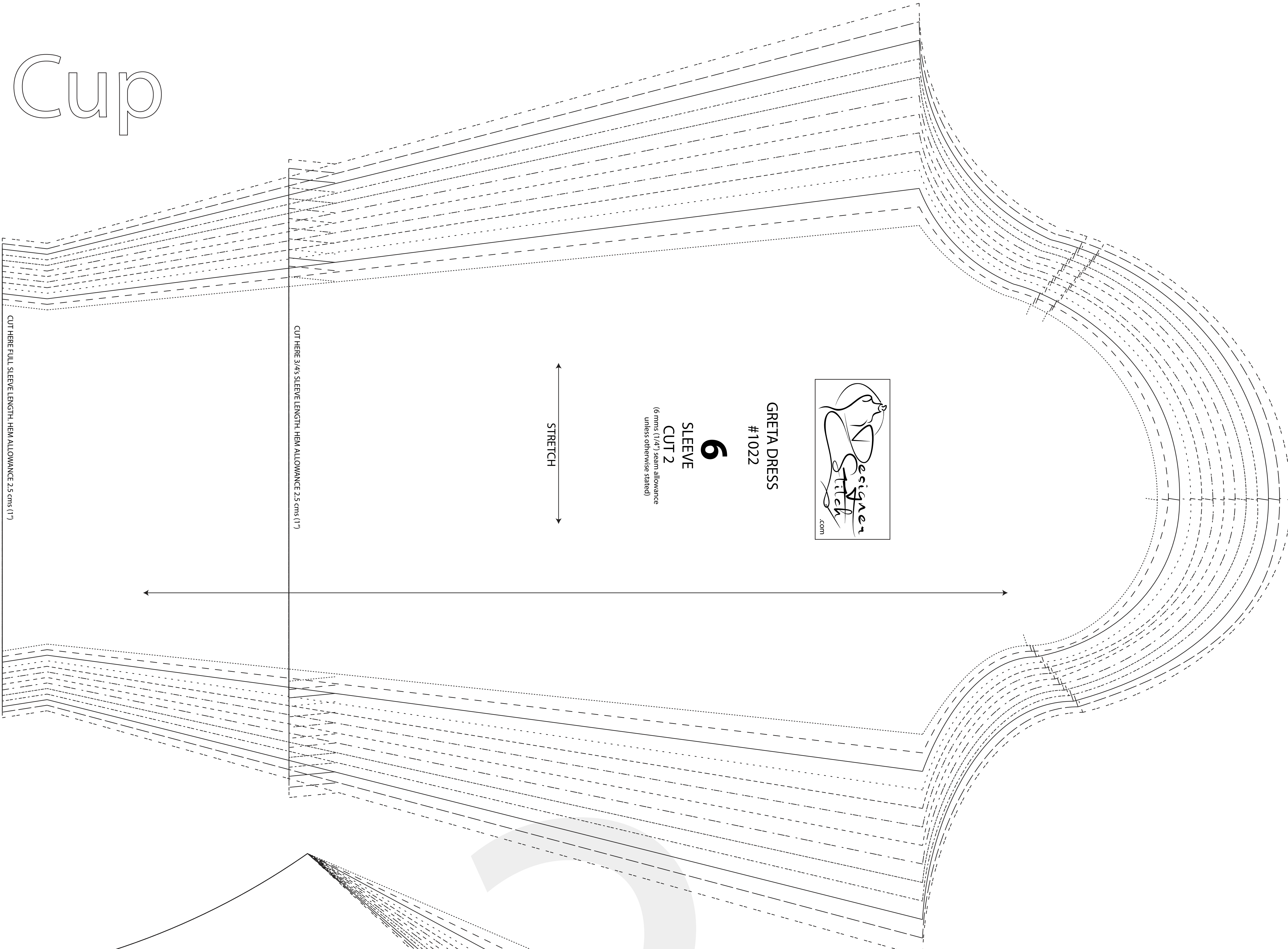
CUT HERE FOR 68cms (26 3/4) LENGTH - HEM ALLOWANCE = 3 cms (1 1/4")

LENGTHEN/SHORTEN HERE

CUT HERE FOR 100 cms (39 1/2") LENGTH - HEM ALLOWANCE = 3 cms (1 1/4")



DD Cup



GRETA DRESS
#1022

6
SLEEVE
CUT 2
(6 cms (1 1/4") seam allowance
unless otherwise stated)

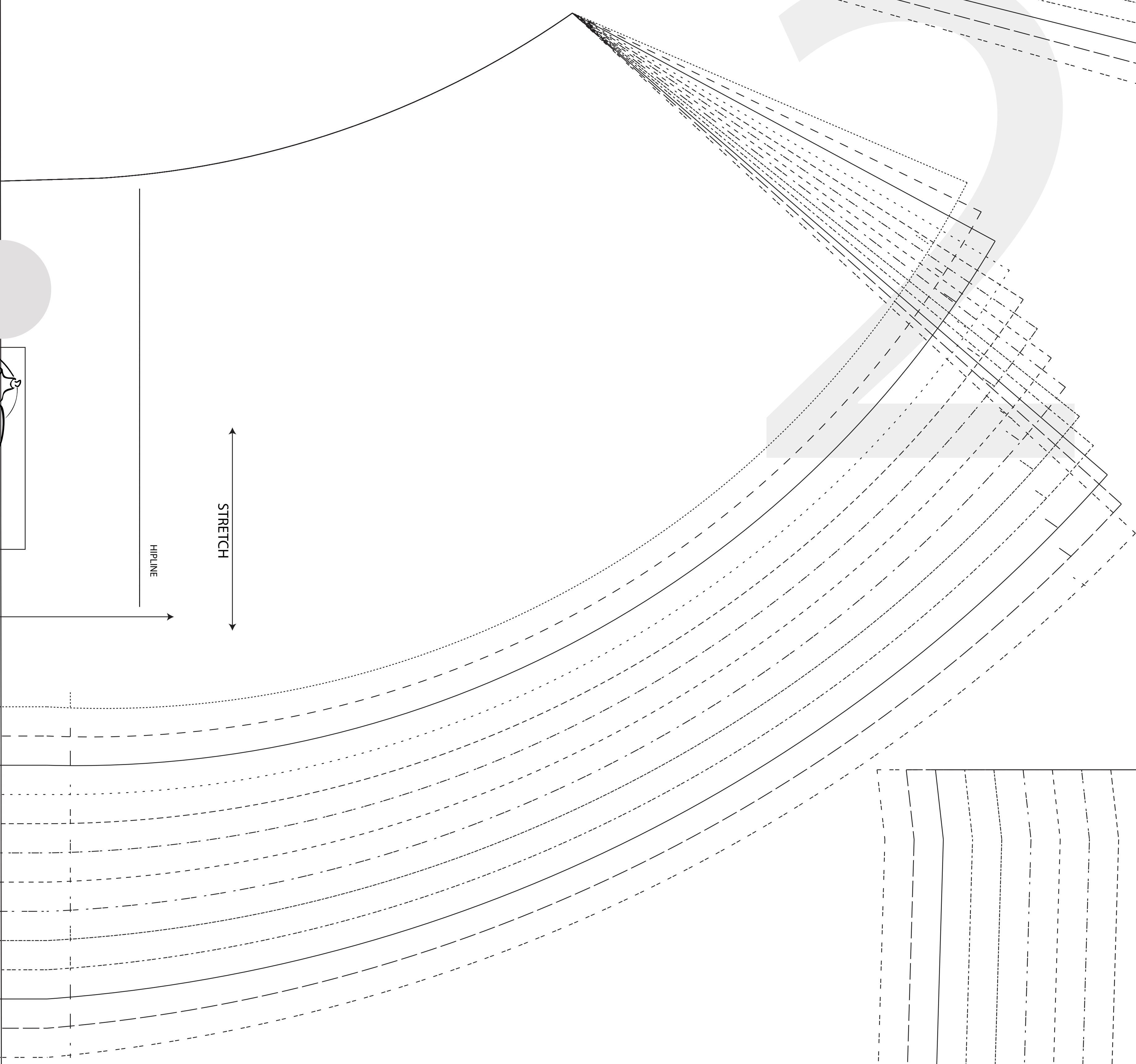
STRETCH

CUT HERE FULL SLEEVE LENGTH, HEM ALLOWANCE 2.5 cms (1")

CUT HERE 3/4S SLEEVE LENGTH, HEM ALLOWANCE 2.5 cms (1")

SIZE KEY

- 1 (1/4")
- 2 (1/2")
- 3 (3/4")
- 4 (1")
- 5 (1 1/4")
- 6 (1 1/2")
- 7 (1 3/4")
- 8 (2")
- 9 (2 1/4")
- 10 (2 1/2")
- 11 (2 3/4")
- 12 (3")
- 13 (3 1/4")
- 14 (3 1/2")



STRETCH

HIP LINE

CUT HERE FOR 100 cms (39 1/2") LENGTH, HEM ALLOWANCE = 3 cms (1 1/4")

LENGTHEN/SHORTEN HERE



GRETA DRESS
#1022

7
ARMHOLE BIND
CUT 2
(6 cms (1 1/4") seam allowance
unless otherwise stated)

STRETCH



GRETA DRESS
#1022

4
FRONT SKIRT
FULL LENGTH
CUT 1 RIGHT SIDE UP
(6 mm (1/4") seam allowance
unless otherwise stated)

← STRETCH →

CUT TO HERE

3

LENGTHEN/SHORTEN HERE



CUT HERE FOR 100 cms (39 1/2") LENGTH HEM ALLOWANCE = 3

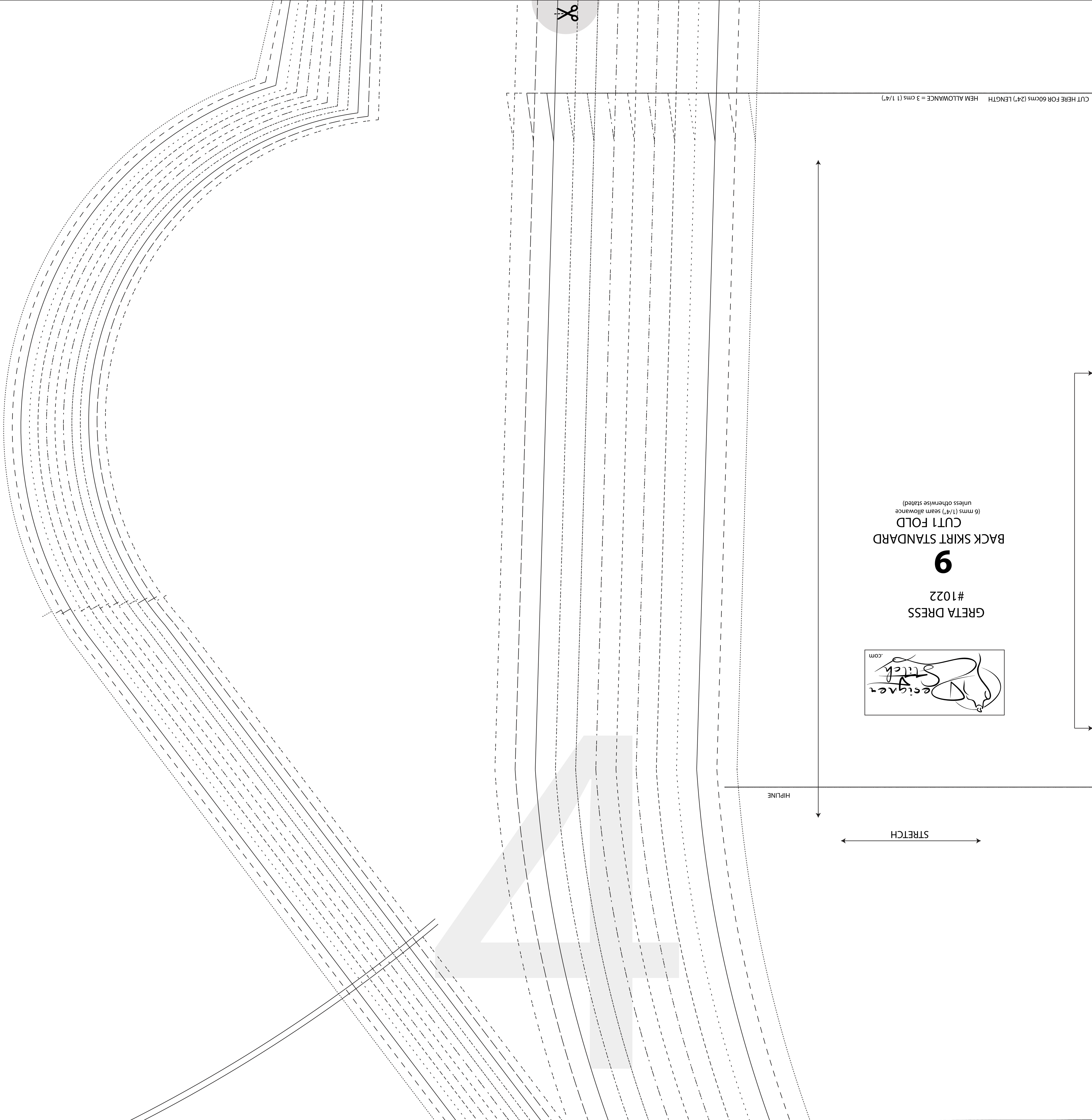
CUT HERE FOR 60cms (24") LENGTH HEM ALLOWANCE = 3 cms (1 1/4")

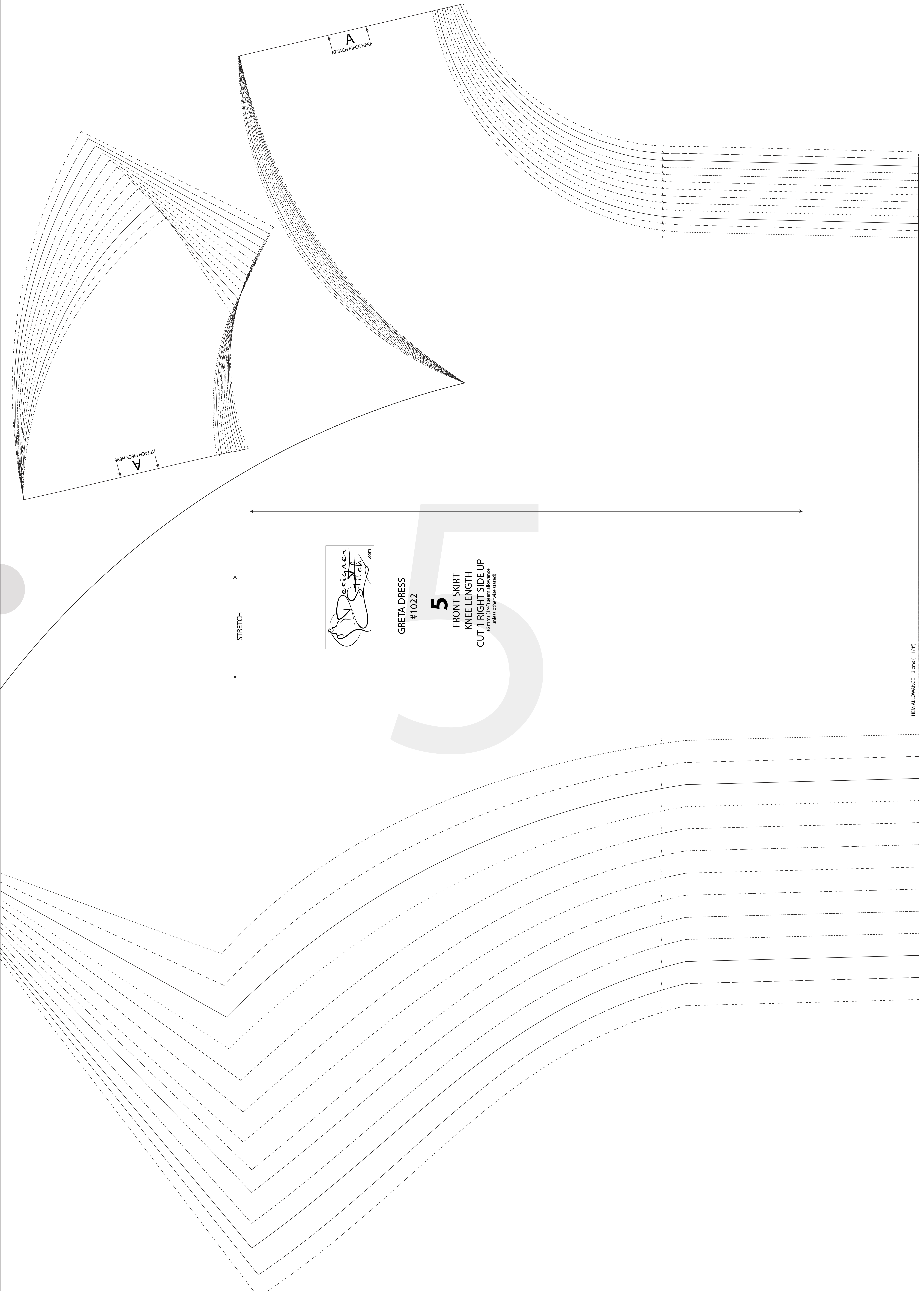
GRETA DRESS
#1022
9
BACK SKIRT STANDARD
CUT1 FOLD
(6 cms (1 1/4") seam allowance
unless otherwise stated)



HIPLINE

STRETCH





ATTACH PIECE HERE
A

ATTACH PIECE HERE
A

STRETCH



GRETA DRESS
#1022

5

FRONT SKIRT
KNEE LENGTH
CUT 1 RIGHT SIDE UP
(6 mm (1/4") seam allowance
unless otherwise stated)

HEM ALLOWANCE = 3 cms (1 1/4")