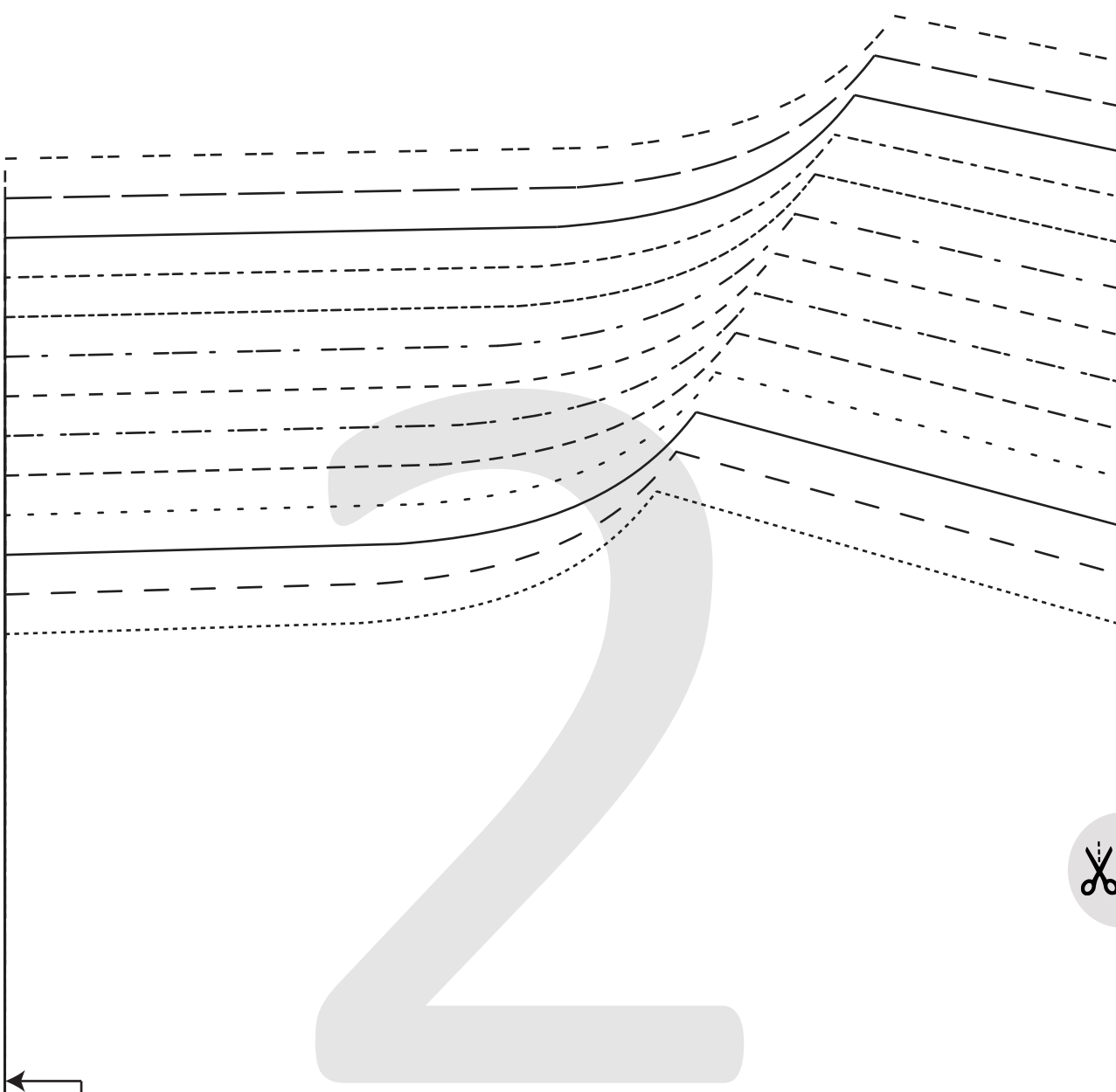
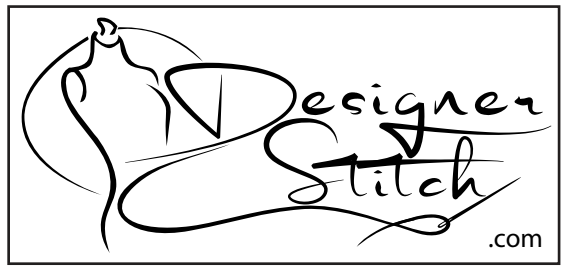


PRINT TILING TEMPLATE GUIDE FOR SIZE SPECIFIC CHOICE
 TRIM PRINT AT HOME PATTERN



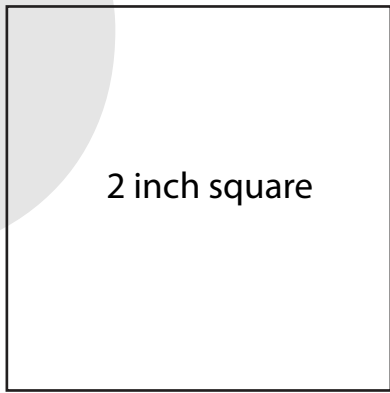
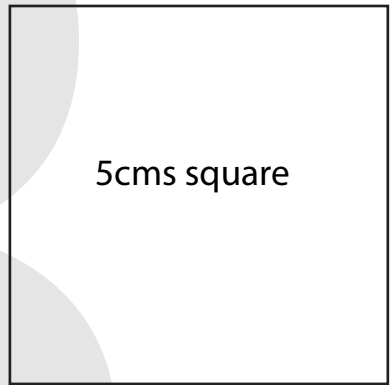
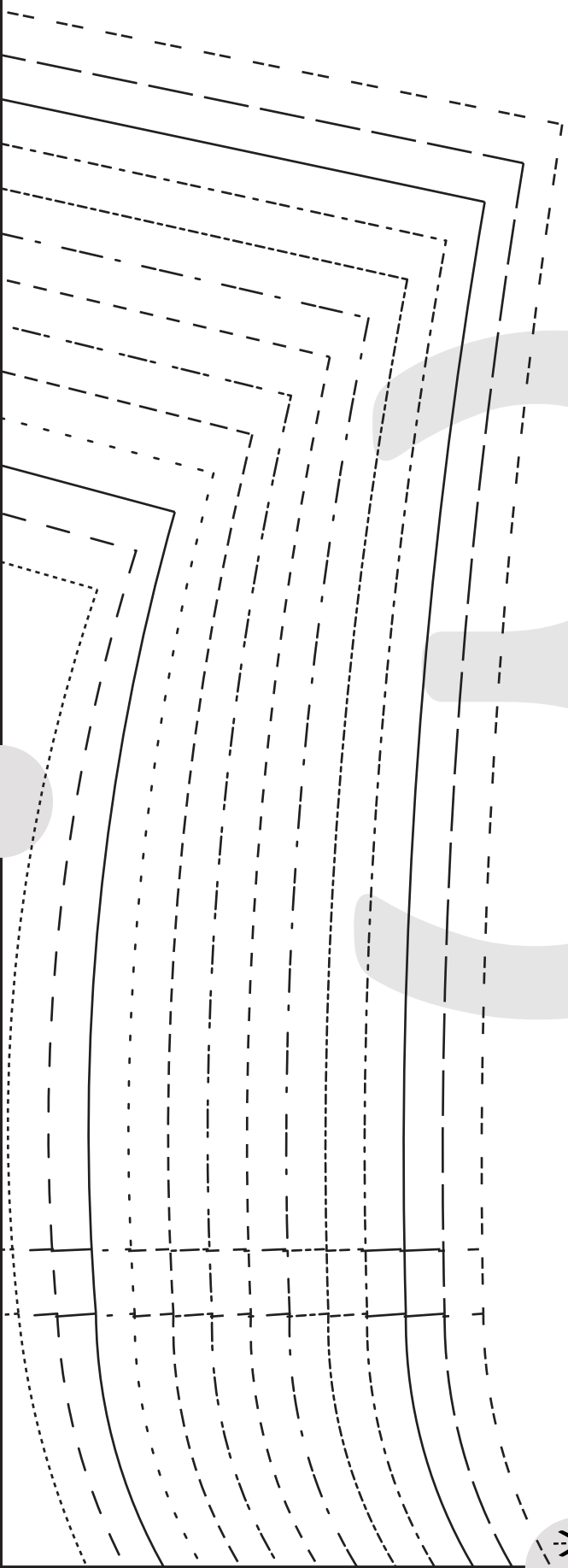
← STRETCH →





GRETA DRESS

#1022



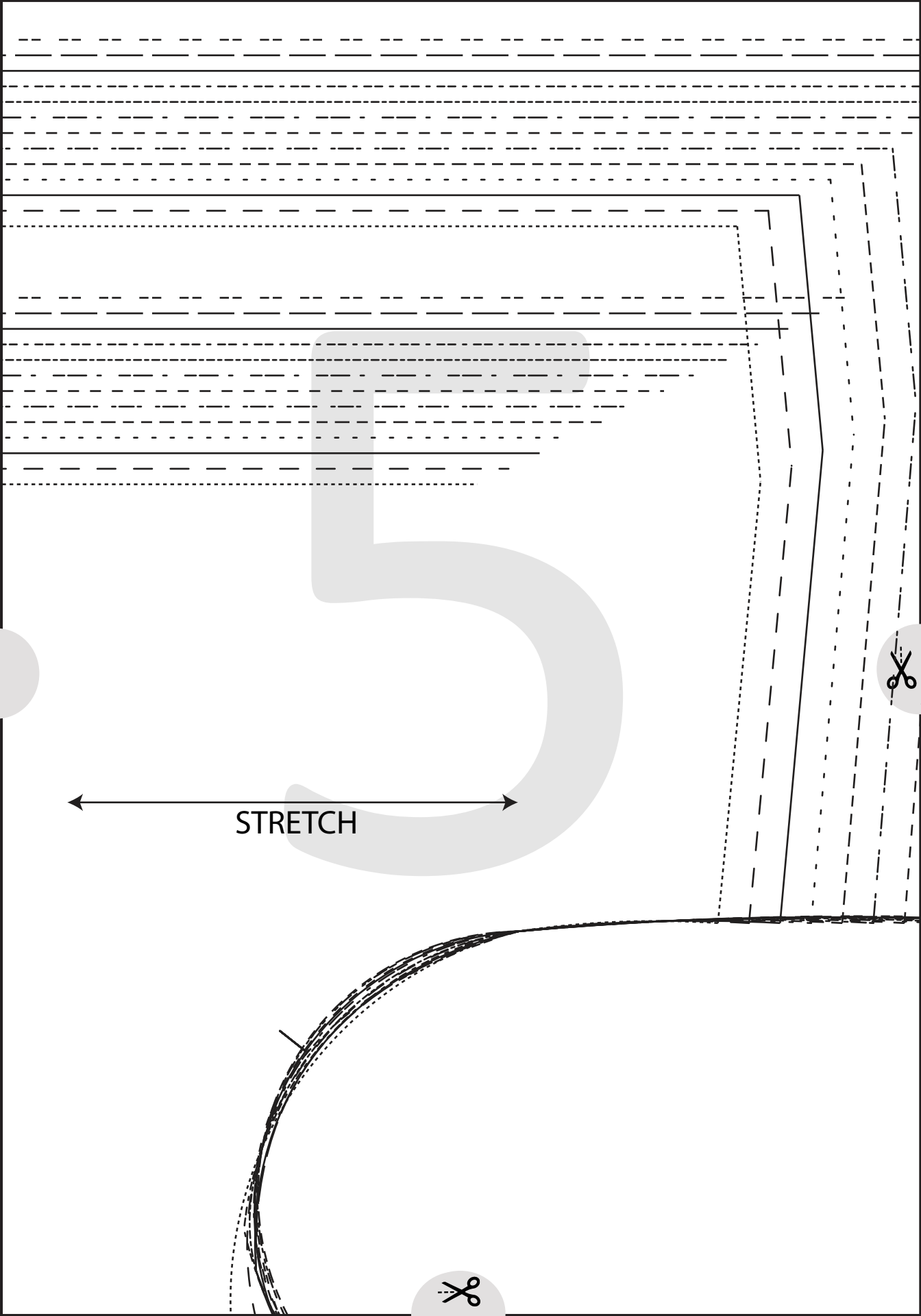
4



GRETA DRESS

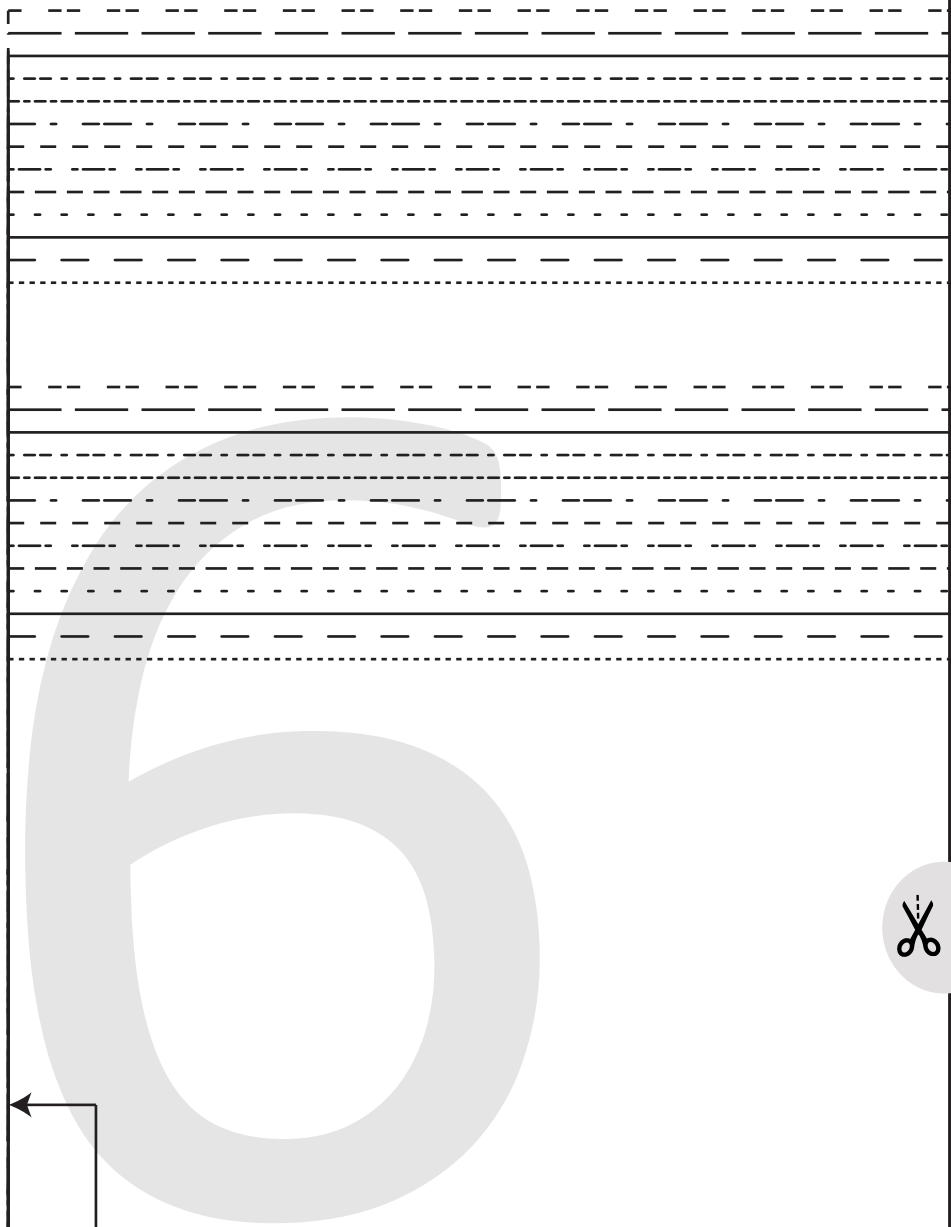
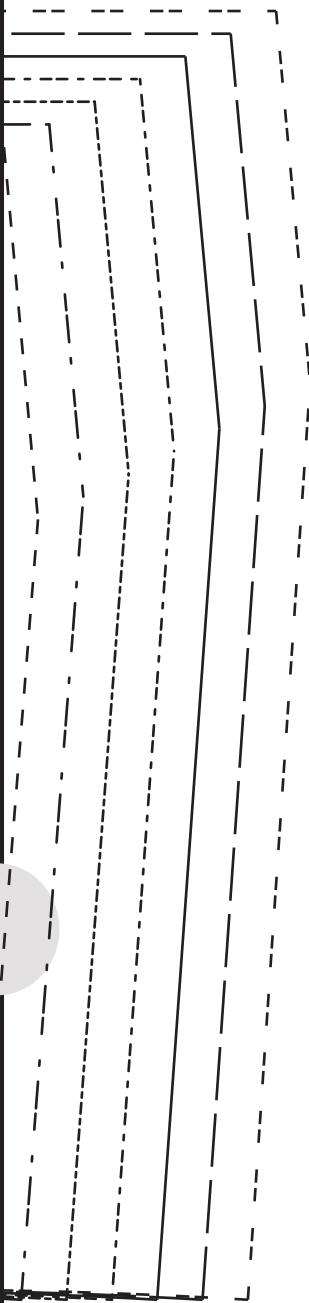
#1022





STRETCH

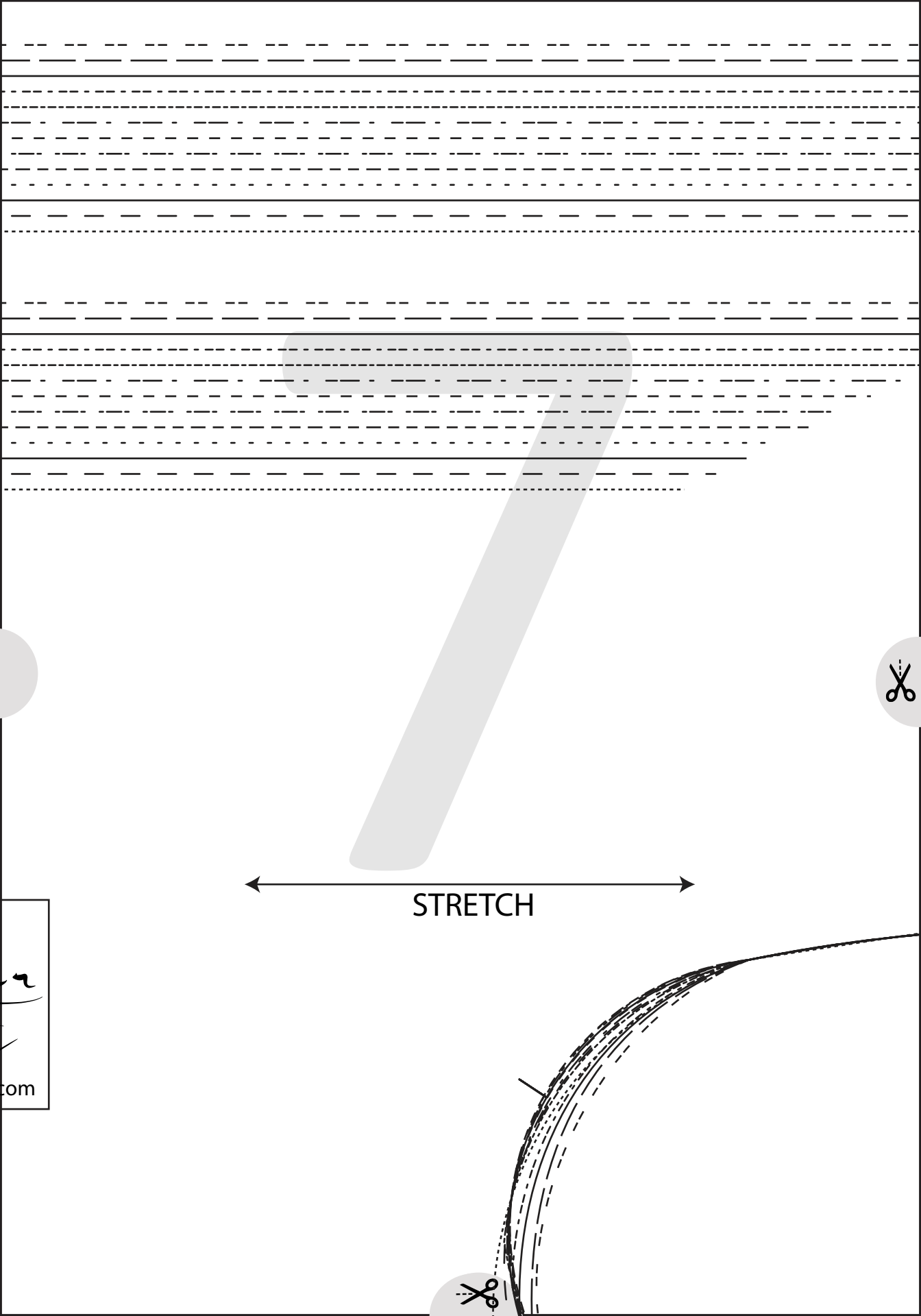




GRETA DRESS

#1022

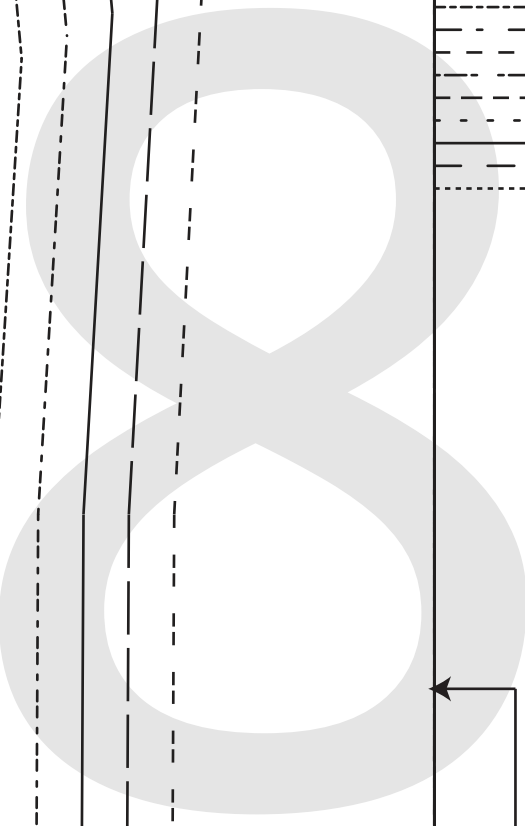
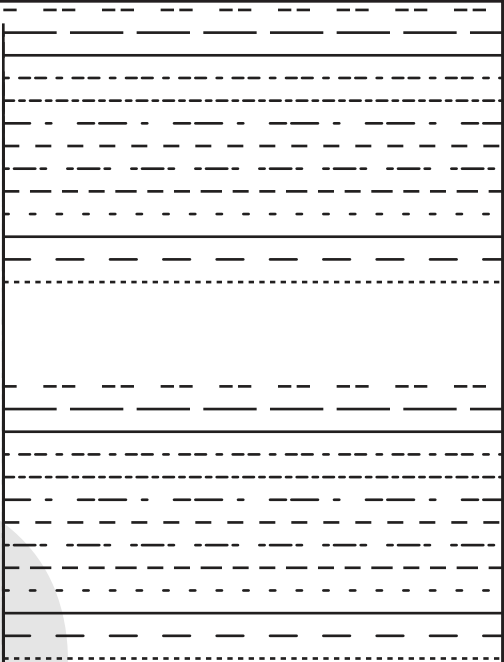
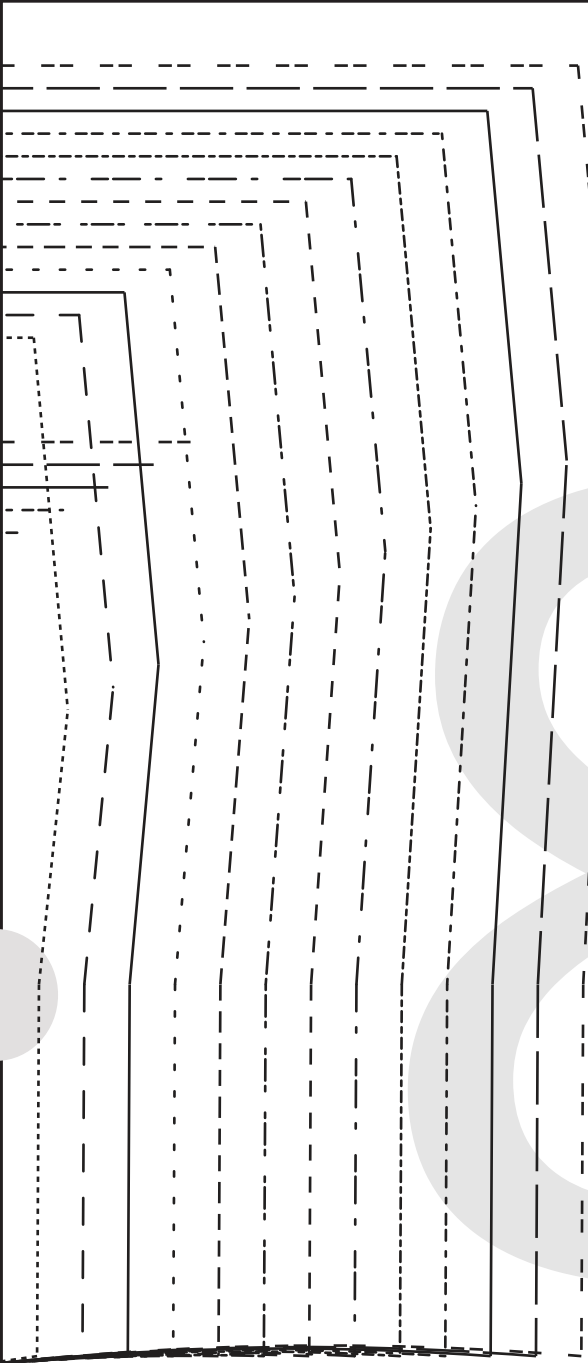




STRETCH

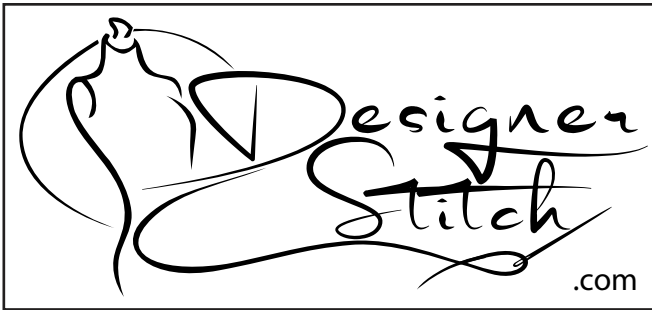
com





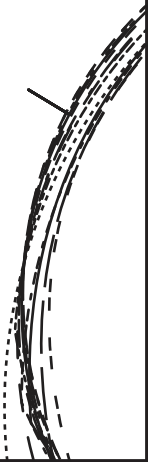


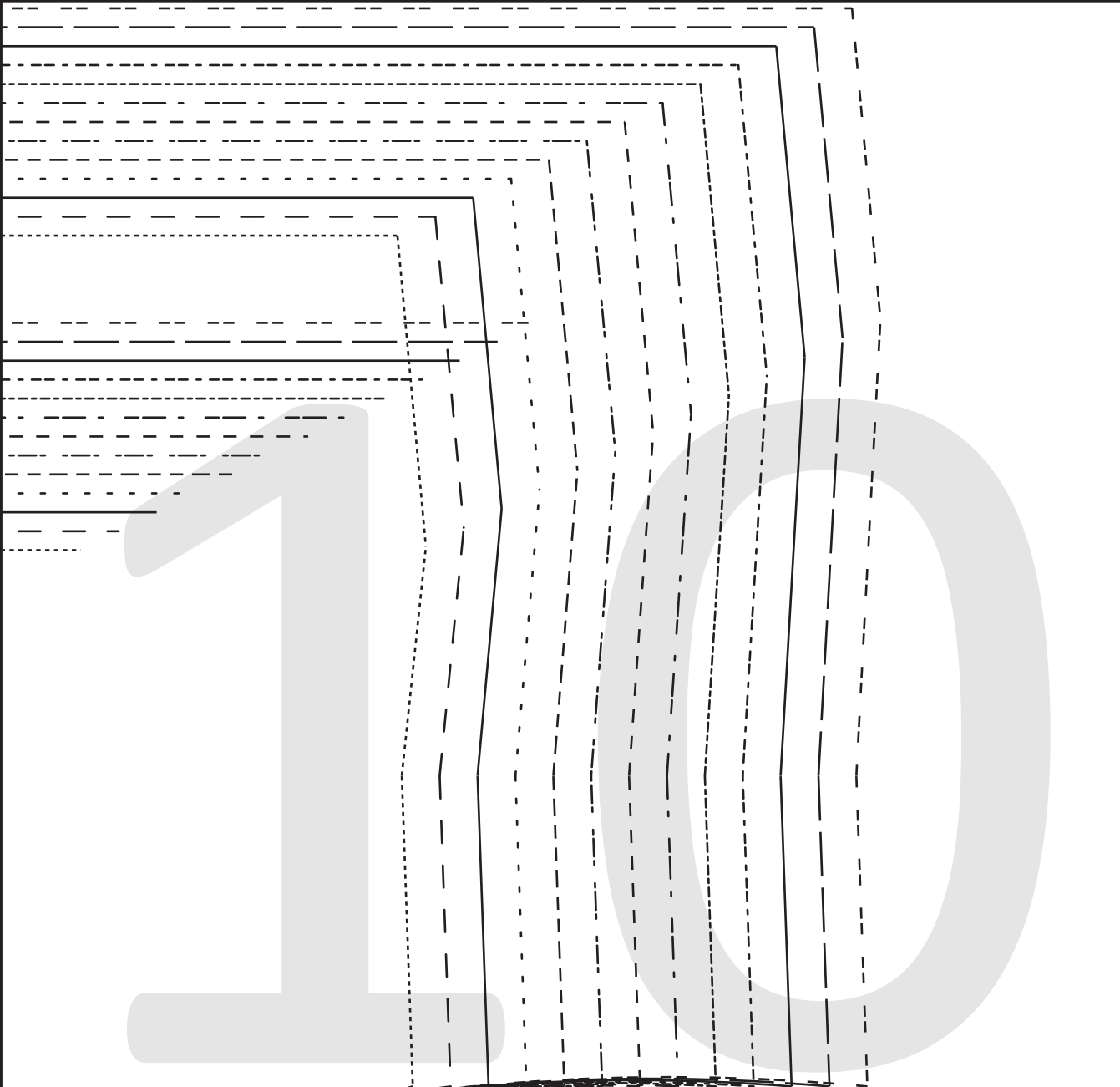
STRETCH



GRETA DRESS

#1022





GRETA DRESS

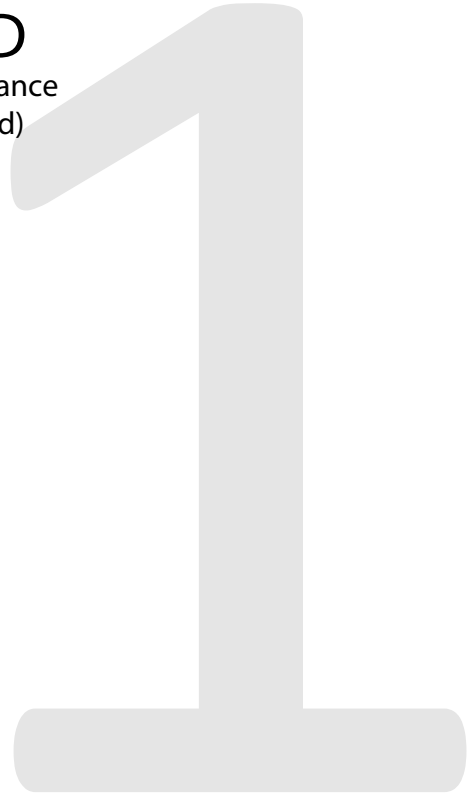
#1022

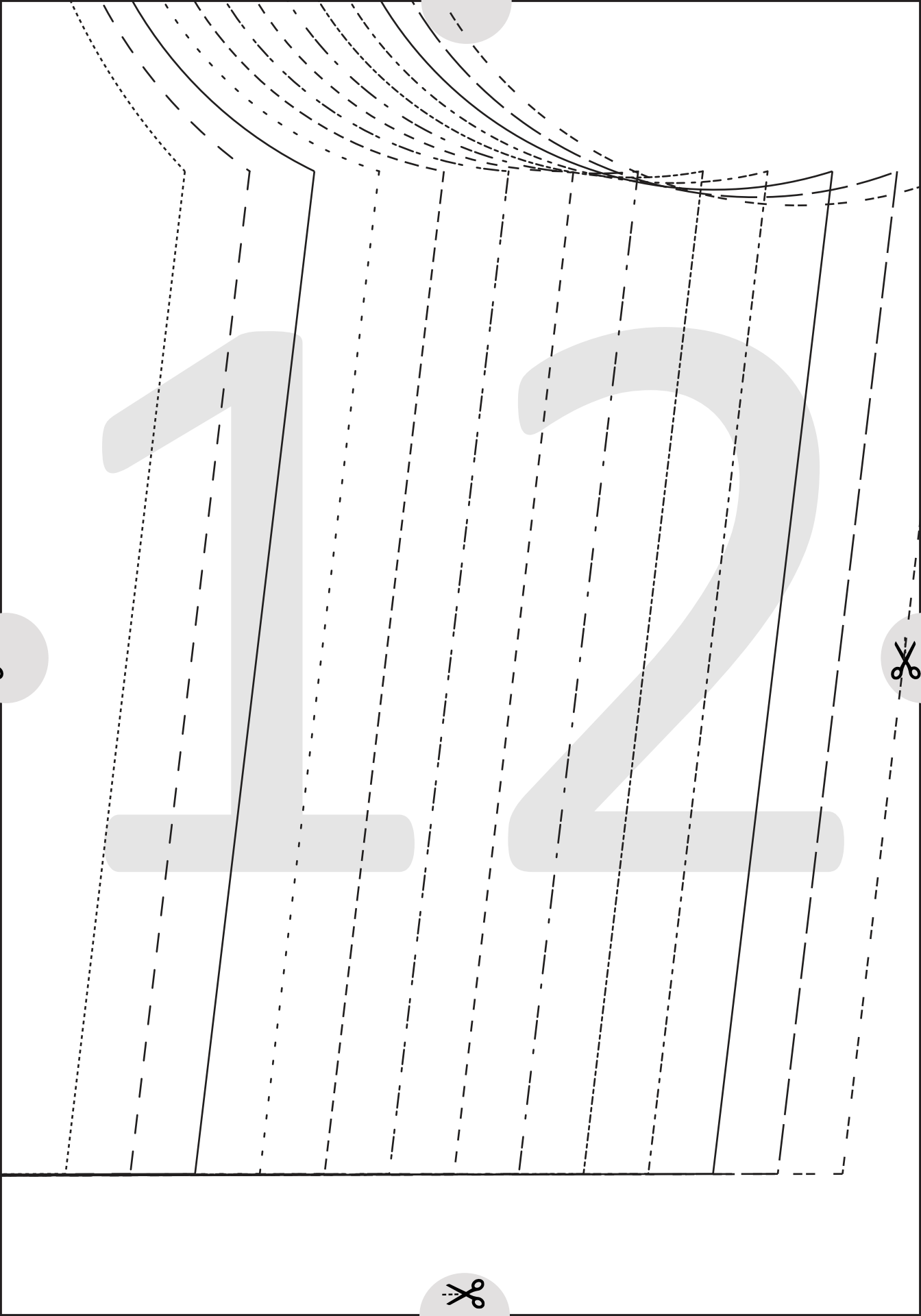
1

BACK

CUT 1 FOLD

(6 mms (1/4") seam allowance
unless otherwise stated)





1

2

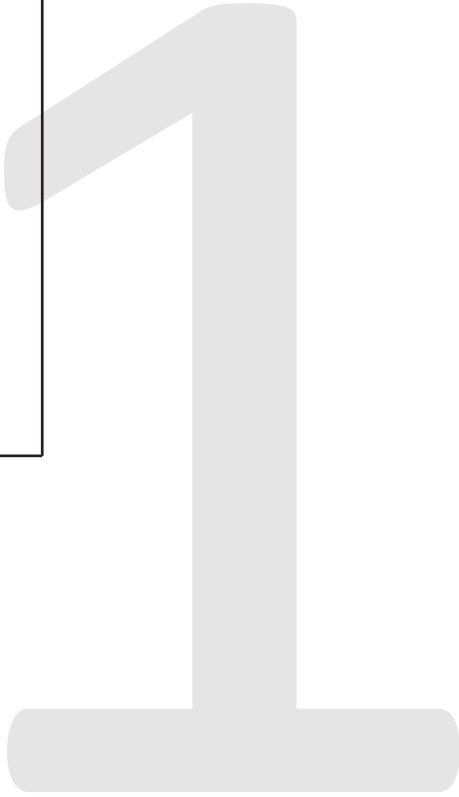


3

FRONT - B/C Cup

CUT 1 FOLD

(6 mms (1/4") seam allowance
unless otherwise stated)



1

4

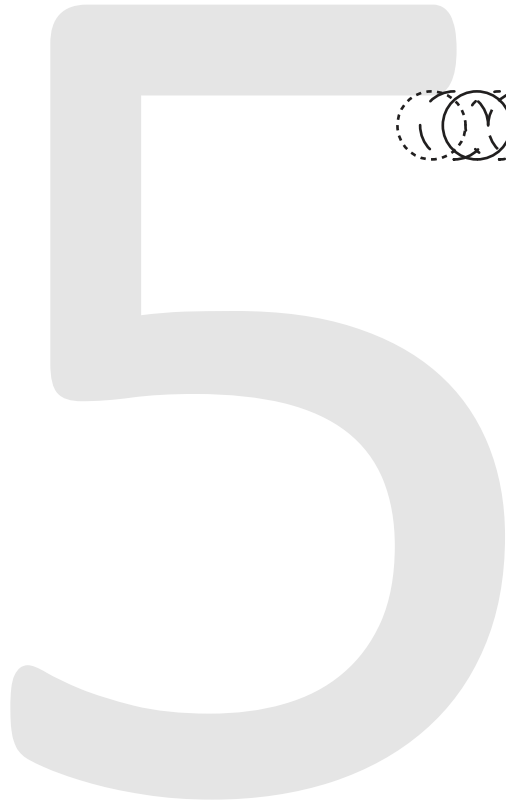
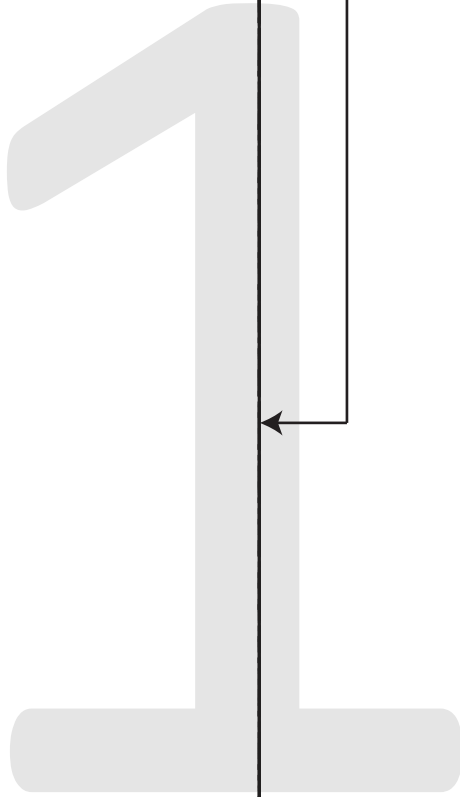


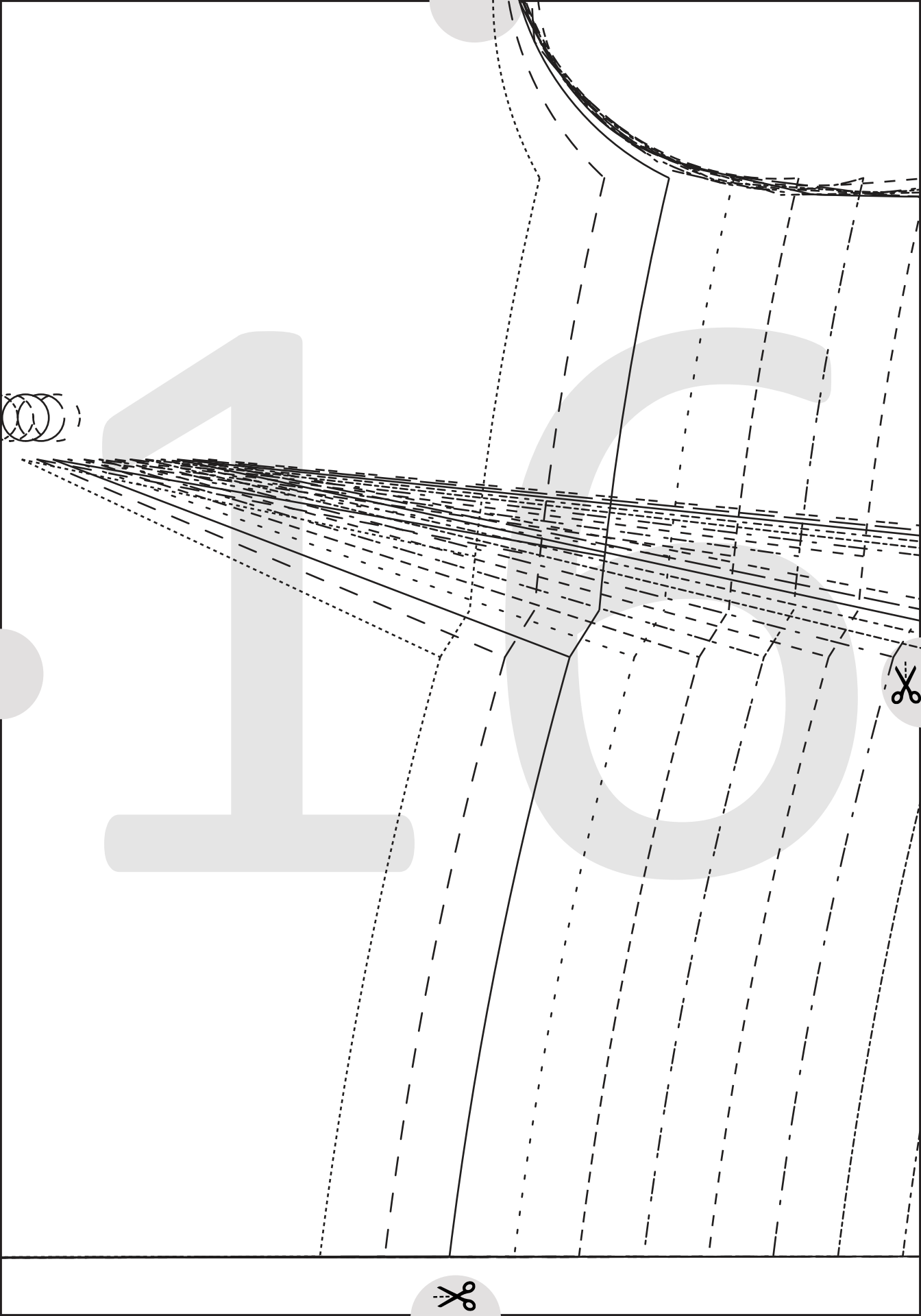
3

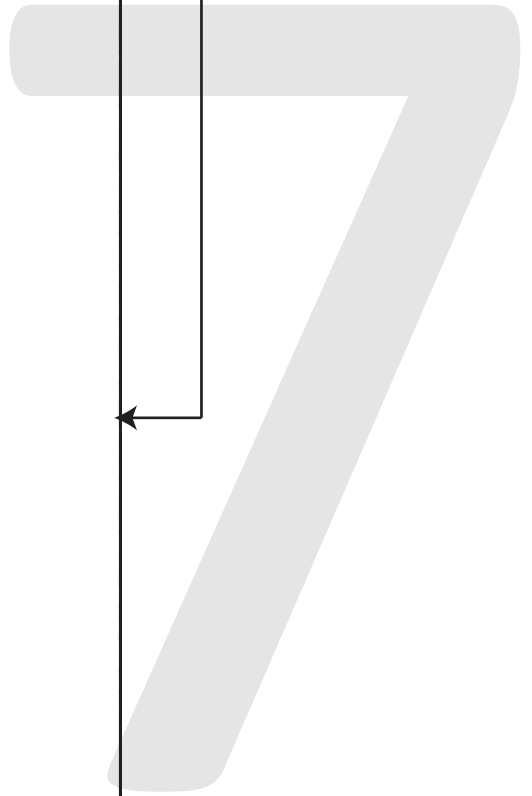
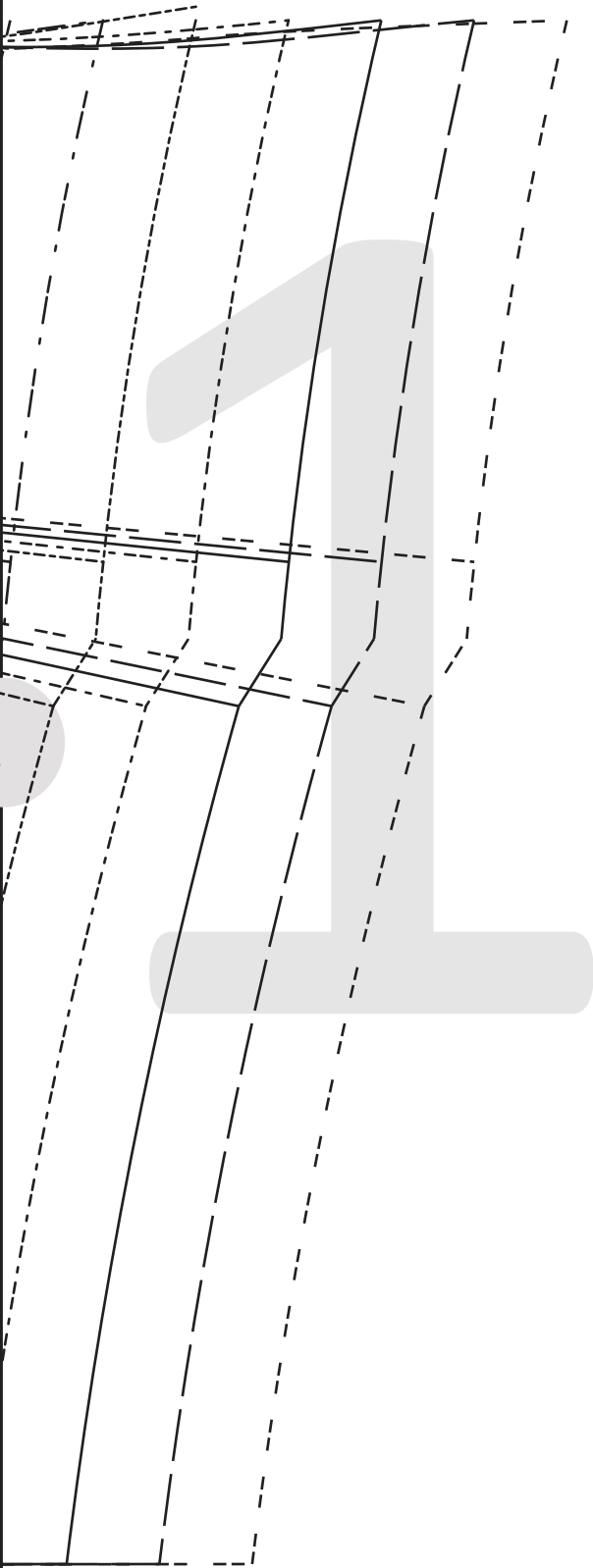
FRONT - D Cup

CUT 1 FOLD

(6 mms (1/4") seam allowance
unless otherwise stated)





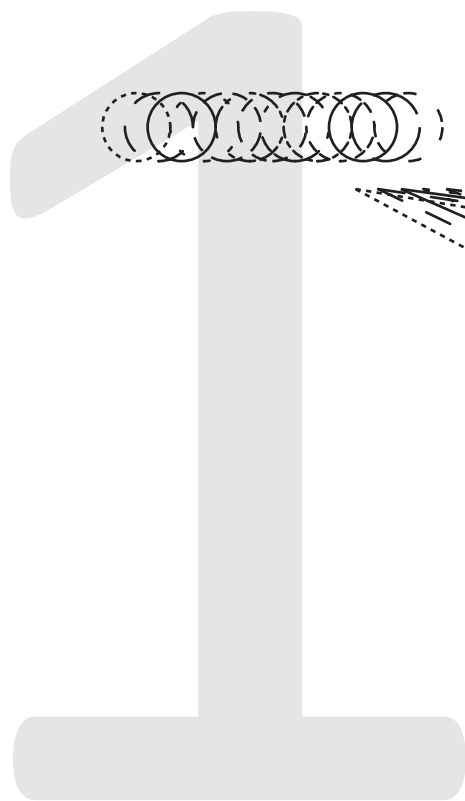


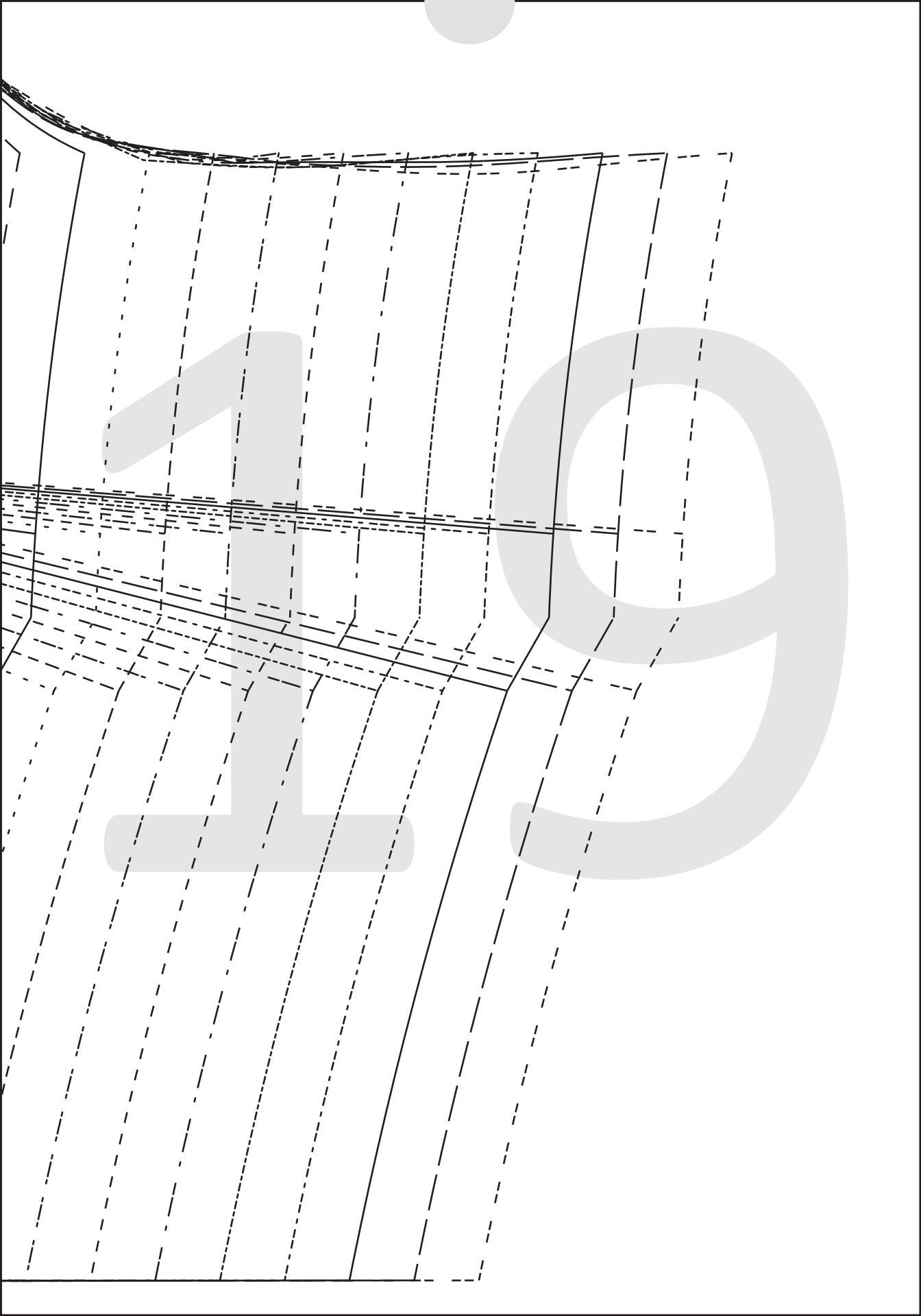
3

FRONT - DD Cup

CUT 1 FOLD

(6 mms (1/4") seam allowance
unless otherwise stated)





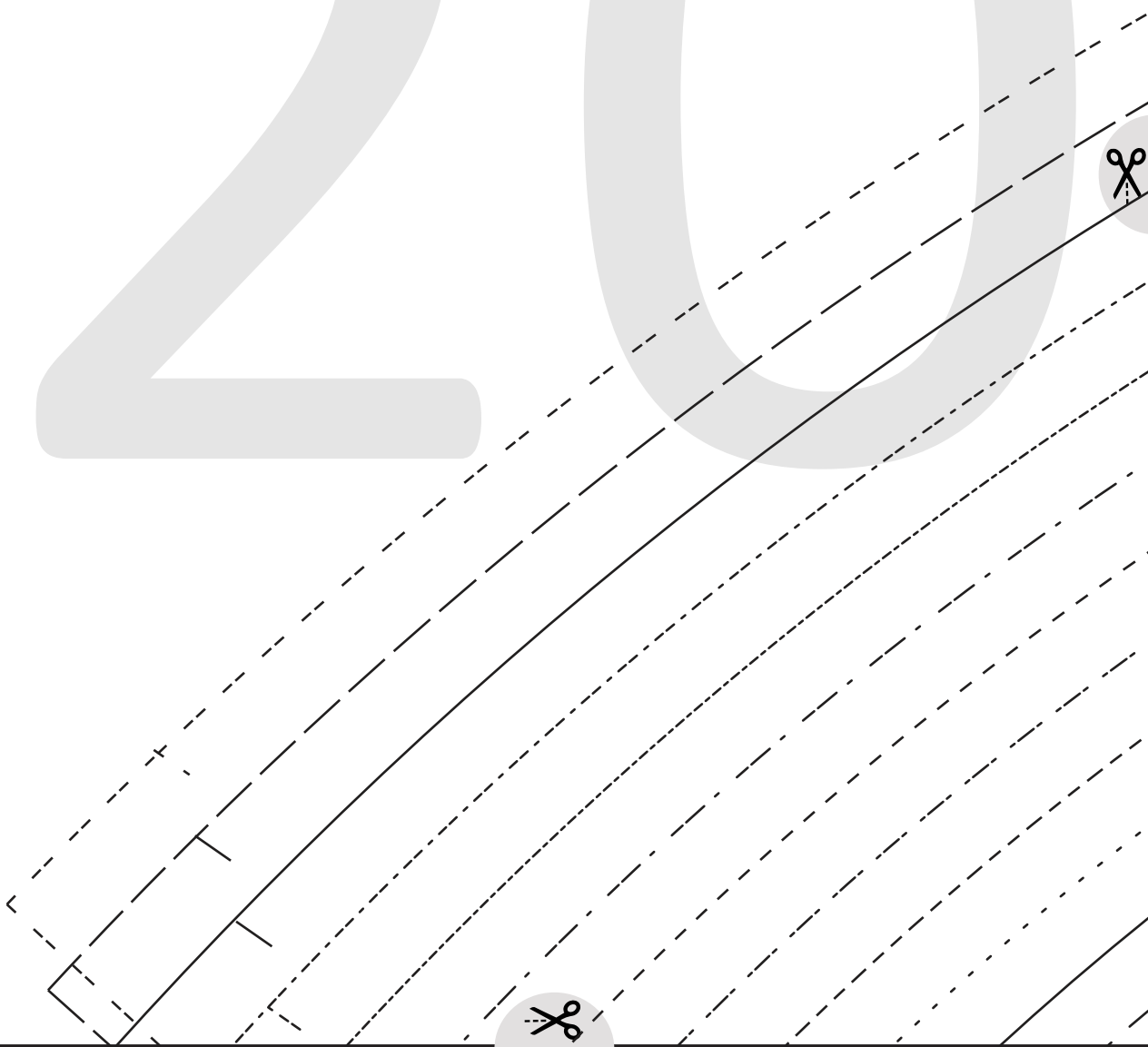
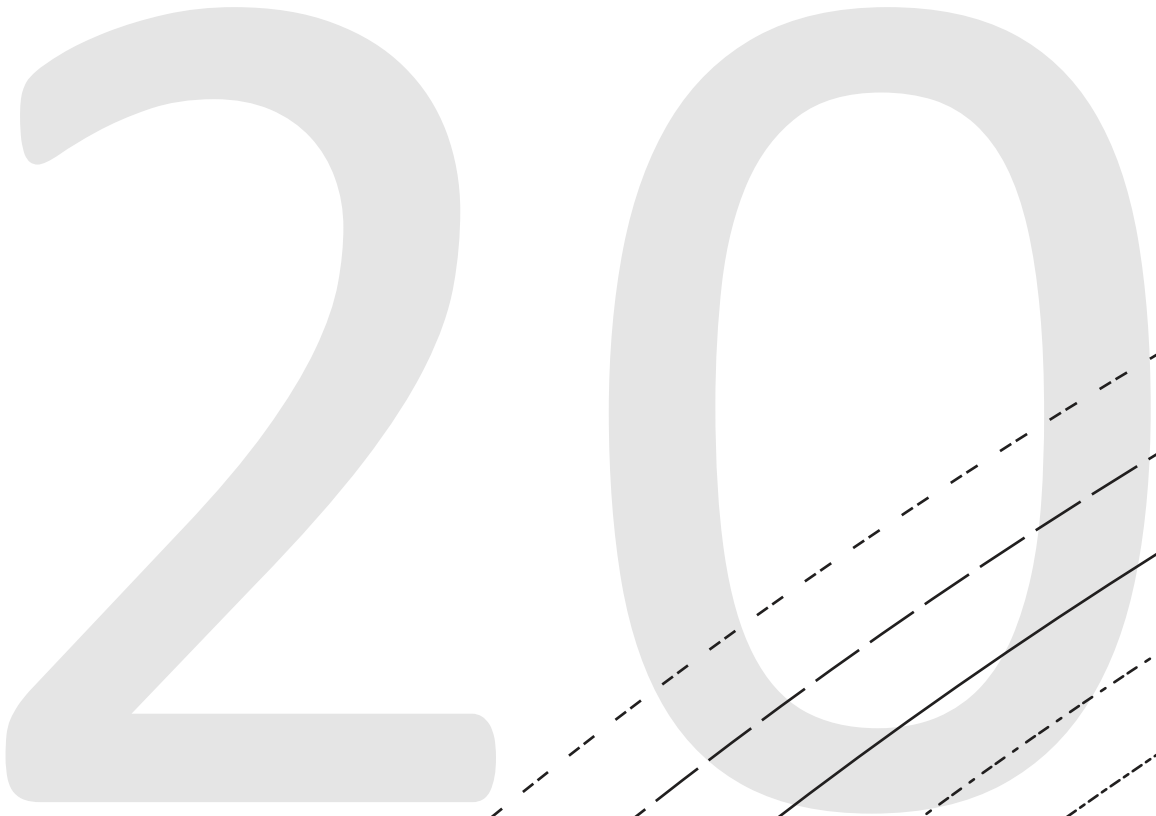


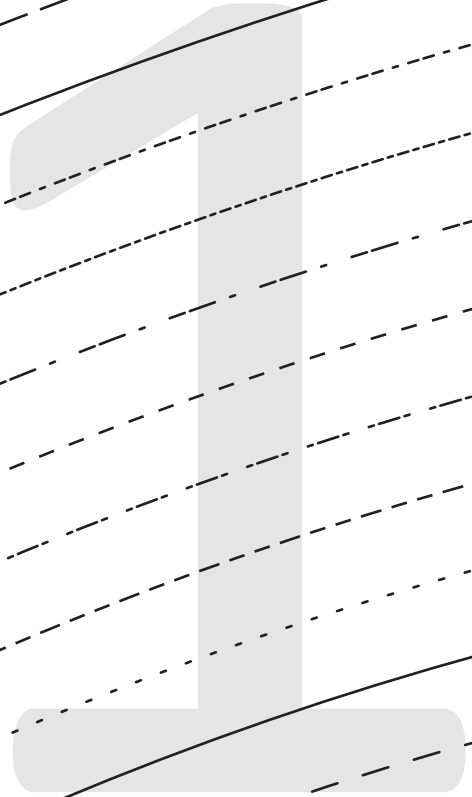
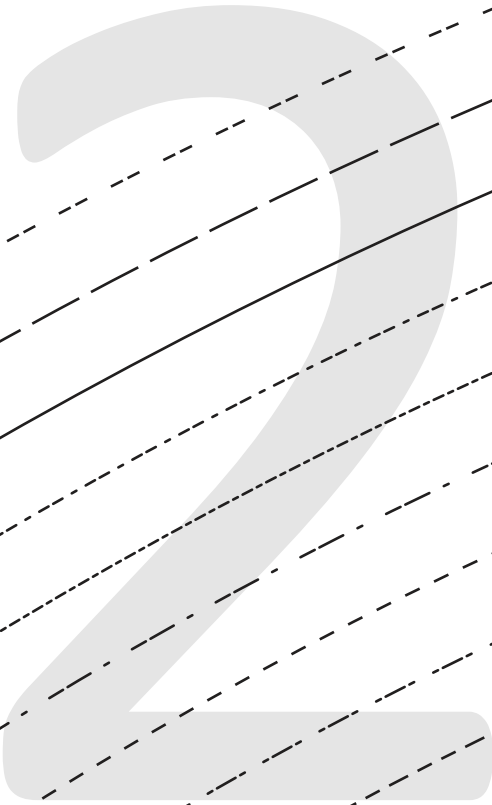
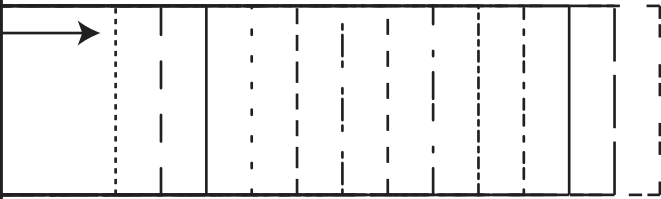
GRETA DRESS
#1022

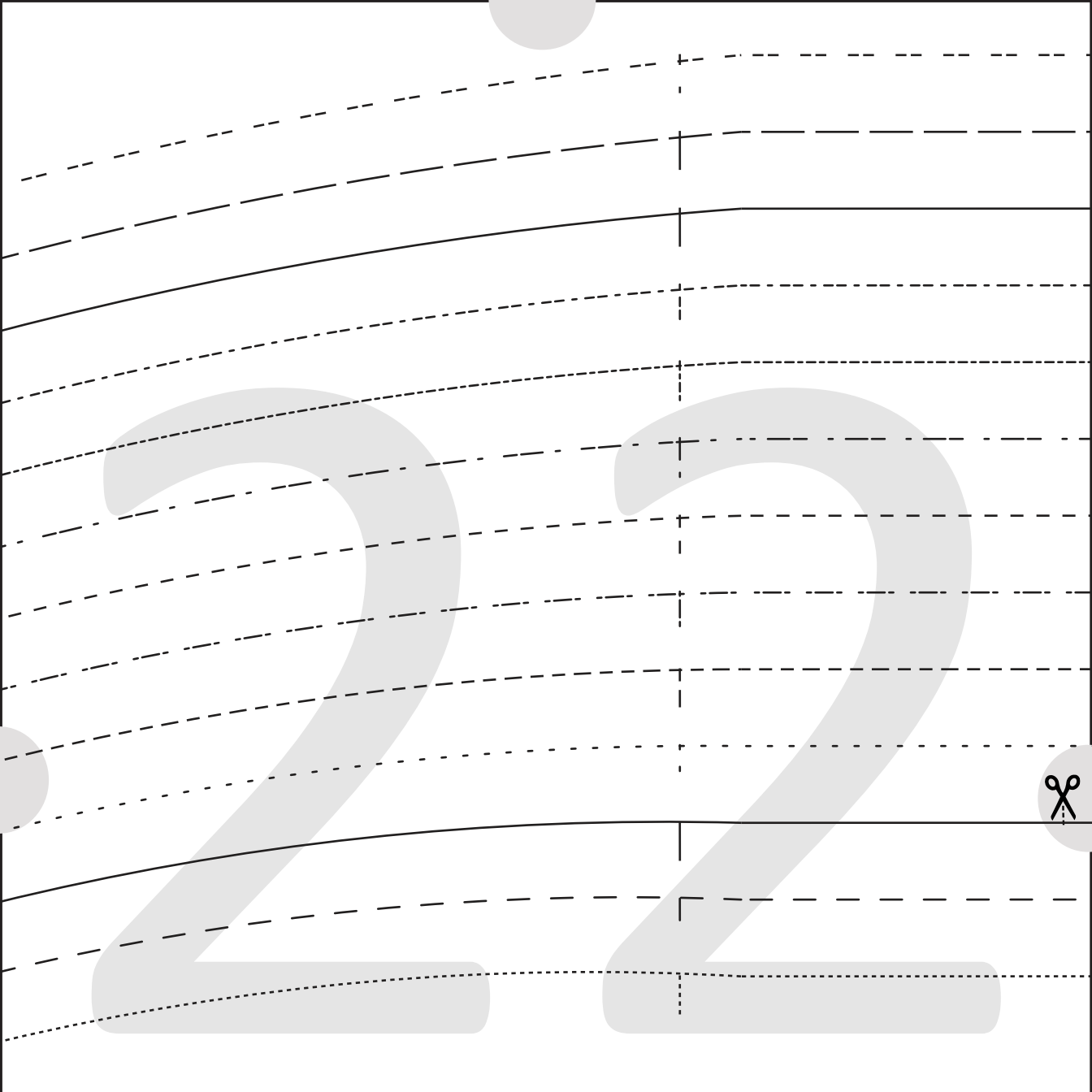


8
NECKLINE BIND
CUT 1
(6 mm (1/4") seam allowance
unless otherwise stated)

← **STRETCH**







↑
STRETCH

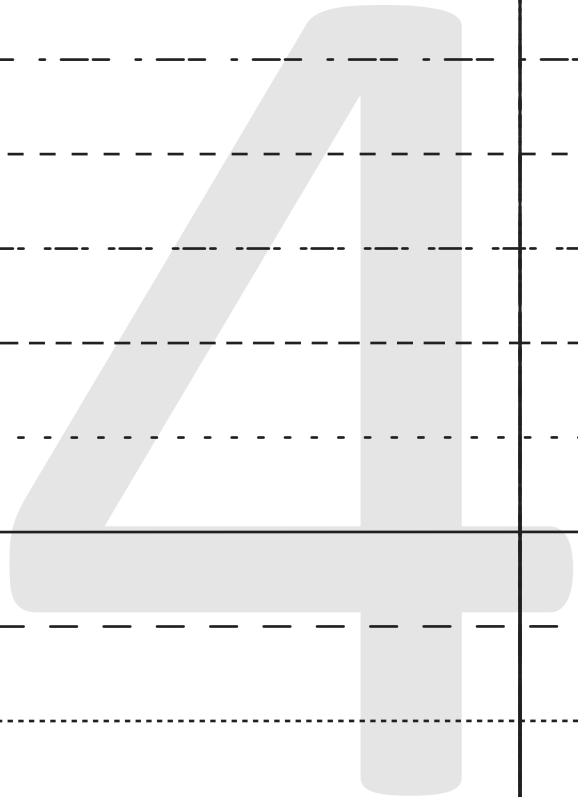
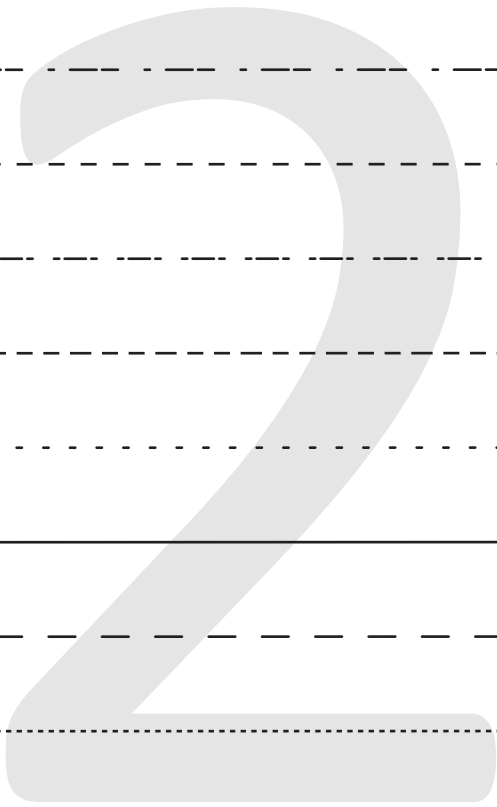
←
HIPLINE



2

3





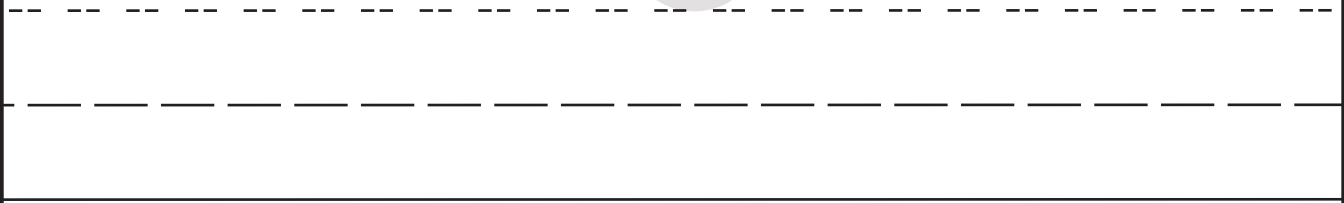
ns (1 1/4")



2 5

LENGTHEN/SHORTEN HERE





2

6



SIZE KEY

1
.....

2 - - - - -
.....

3 _____
.....

4
.....

5 - - - - -
.....

6
.....

7 - - - - -
.....

8
.....

9
.....

10
.....

11 _____
.....

12 - - - - -
.....

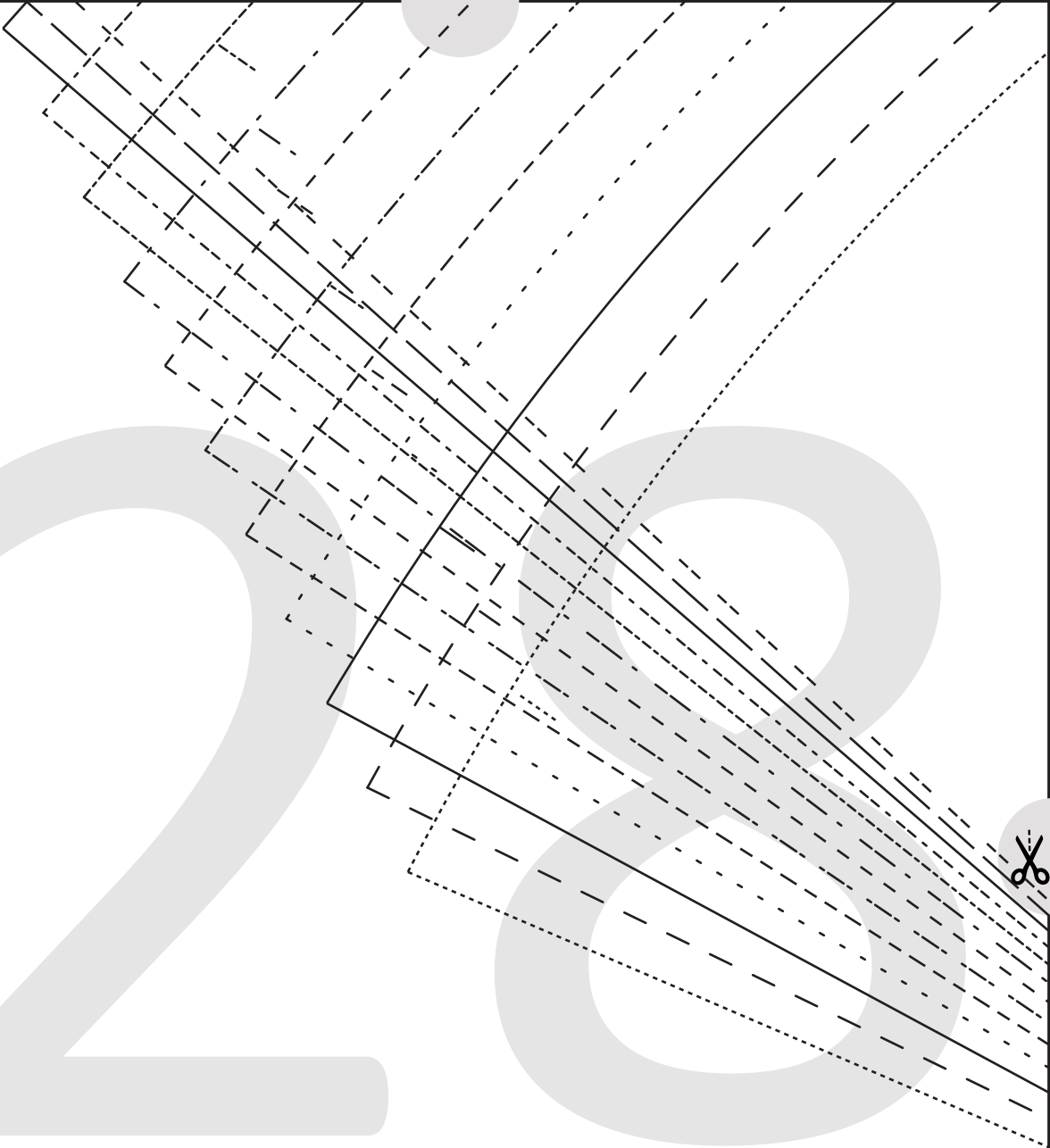
13
.....

14
.....

NCE = 3 cms (1 1/4")

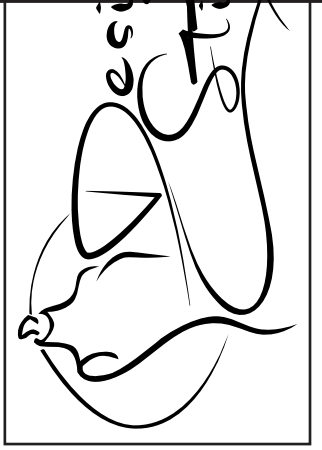


208



29





30



--	--	--	--	--	--	--	--	--	--	--	--

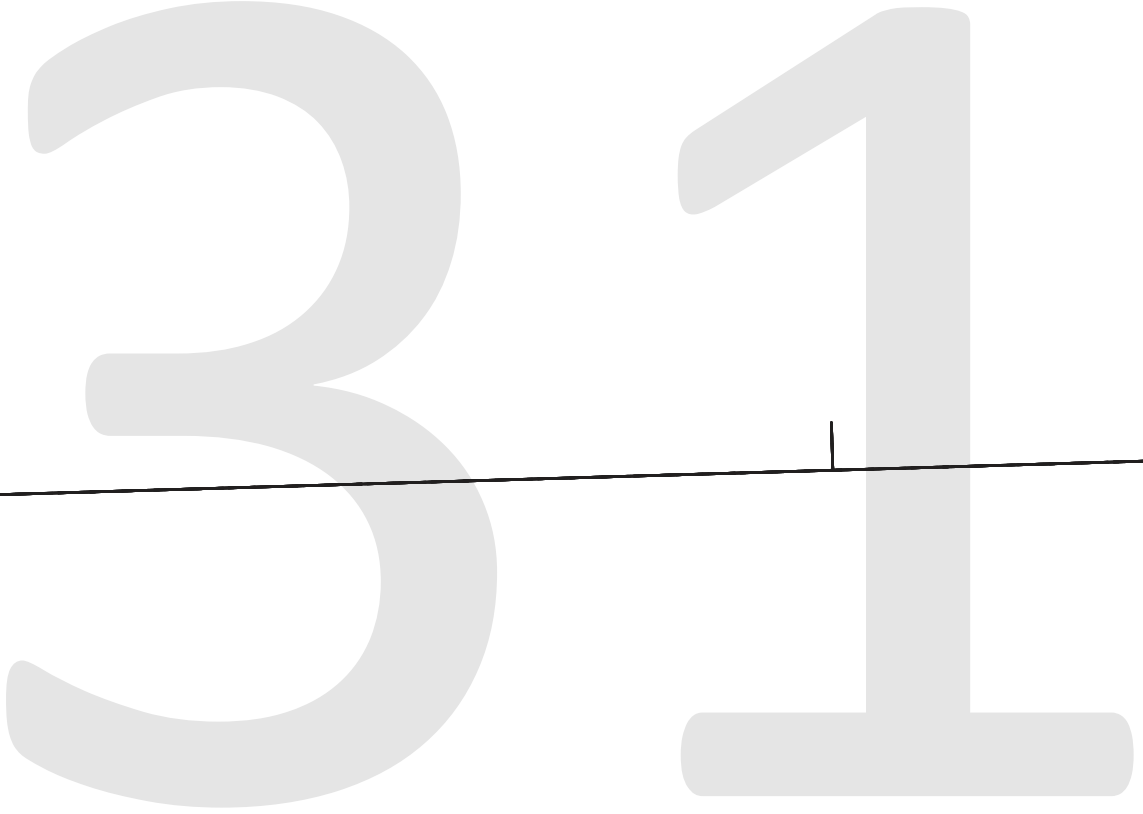


GRETA DRESS
#1022

2

BACK SKIRT
CUT 2

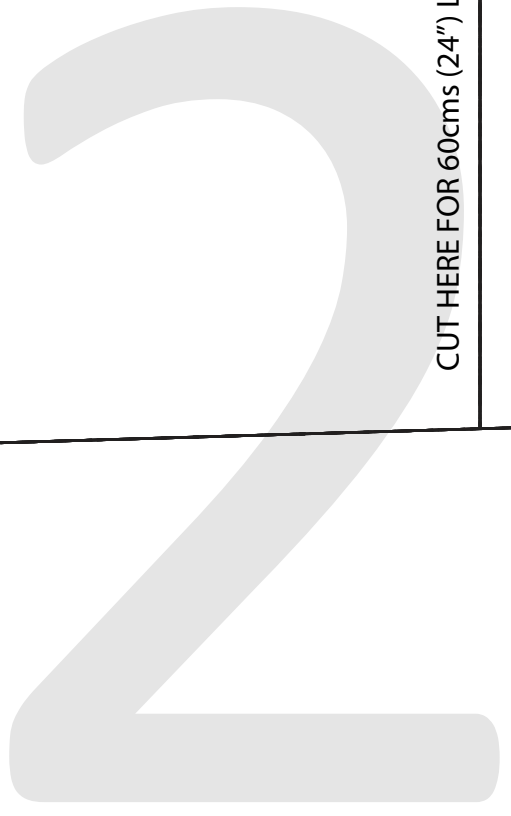
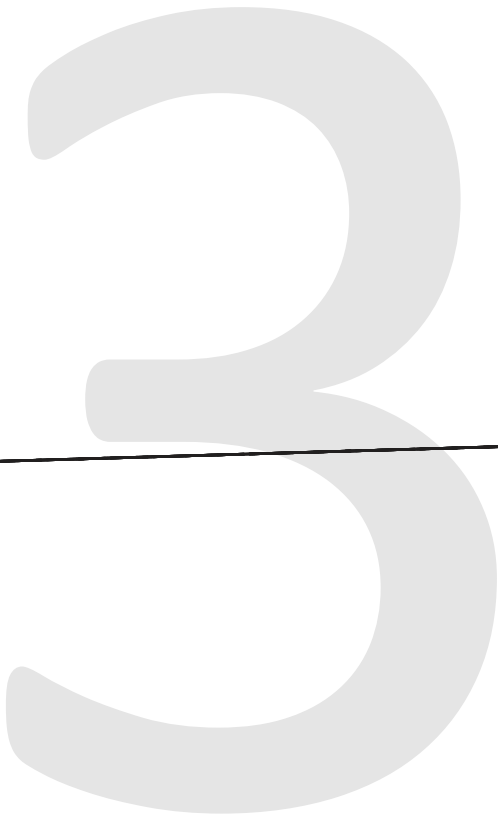
(6 mm (1/4") seam allow
unless otherwise stated)



GRETA DRESS
#1022

7
ARMHOLE BIND
CUT 2
(6 mm (1/4") seam allowance
unless otherwise stated)





CUT HERE FOR 60cms (24") LENGTH HEM ALLOWANCE = 3 cm

← STRETCH →



33

33



--	--	--	--	--	--

3

4

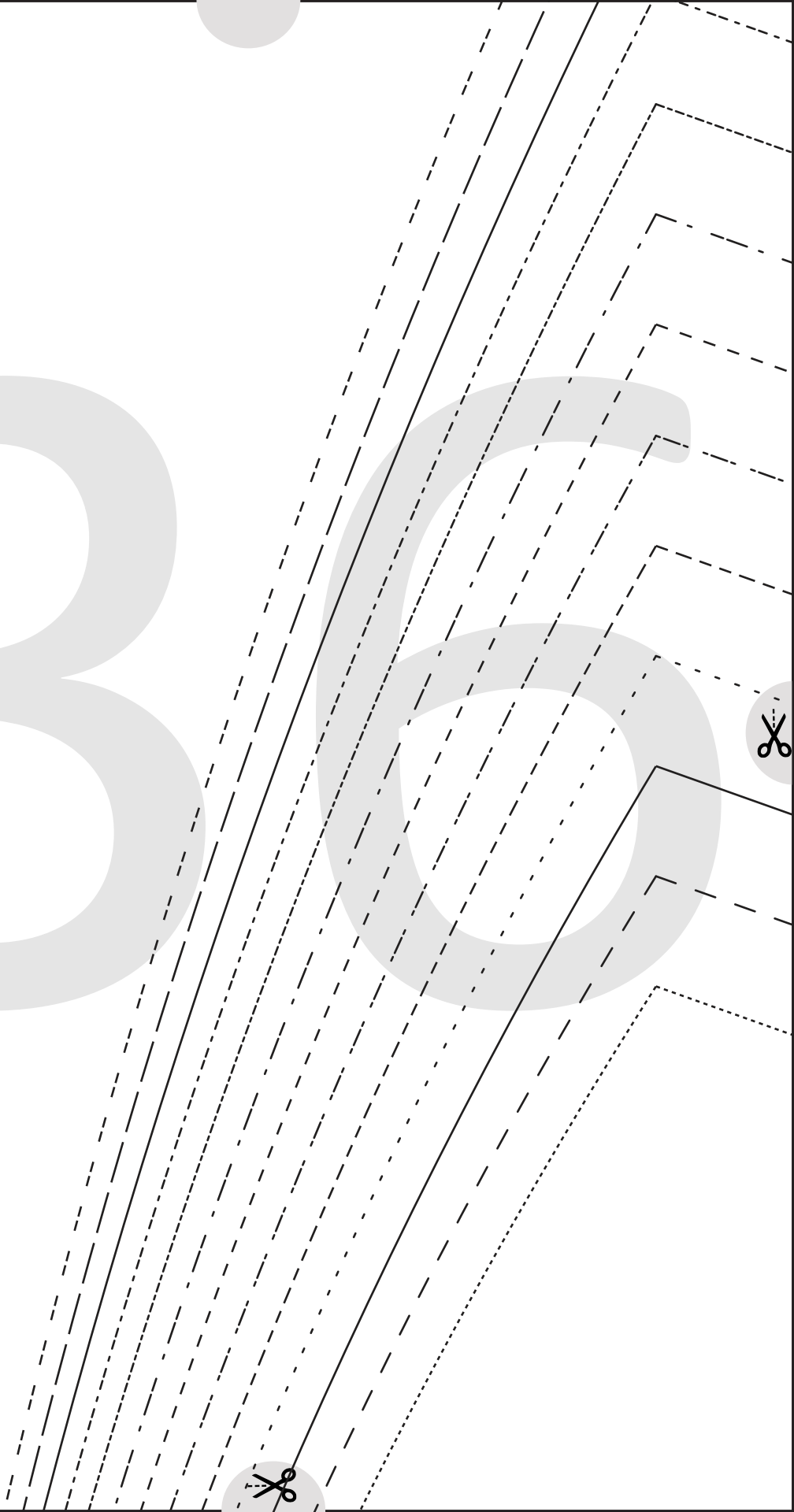


CUT HERE FOR 100 cms (39 1/2") LENGTH HEM ALLOWA

35

3

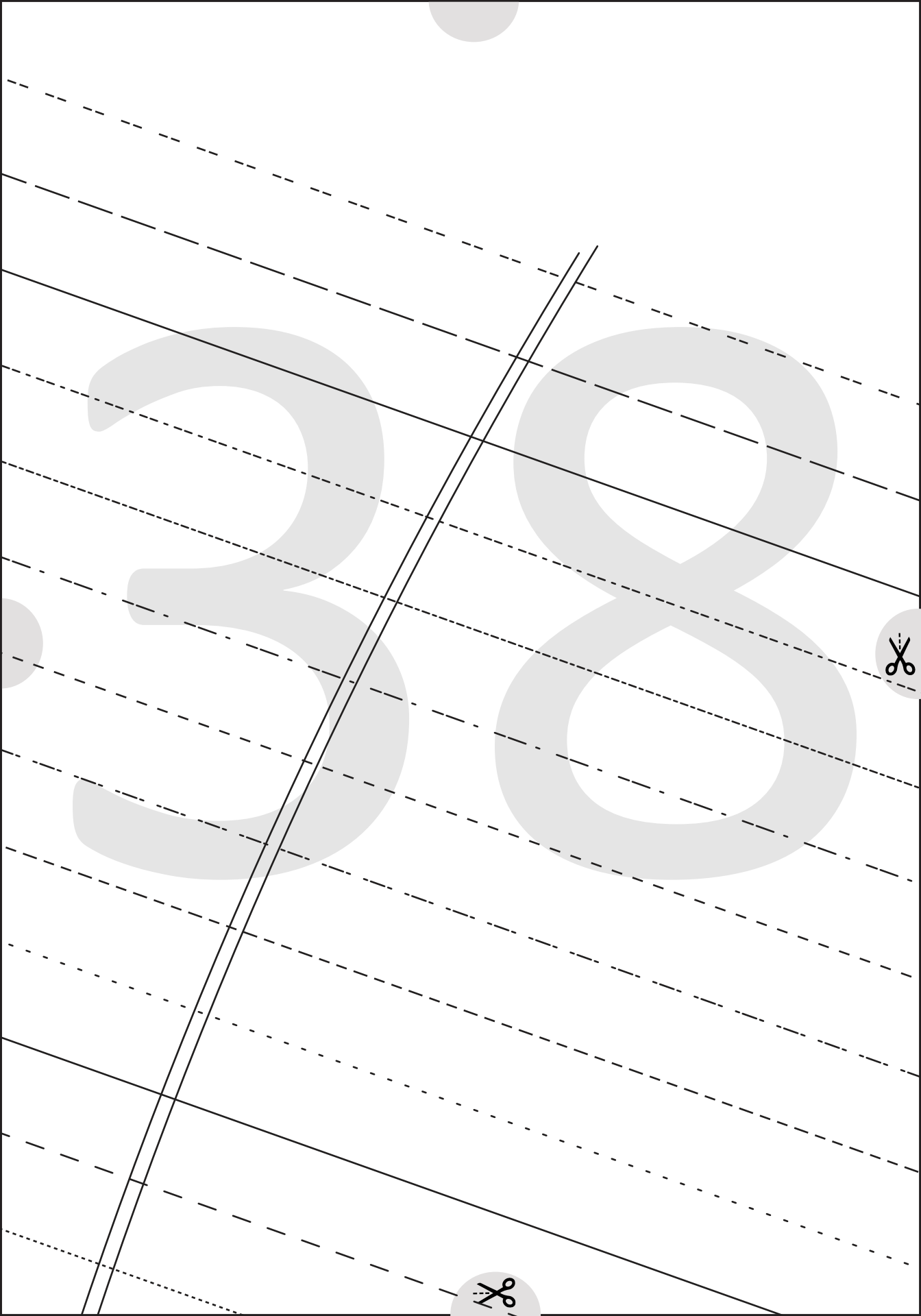
6



3

7





39



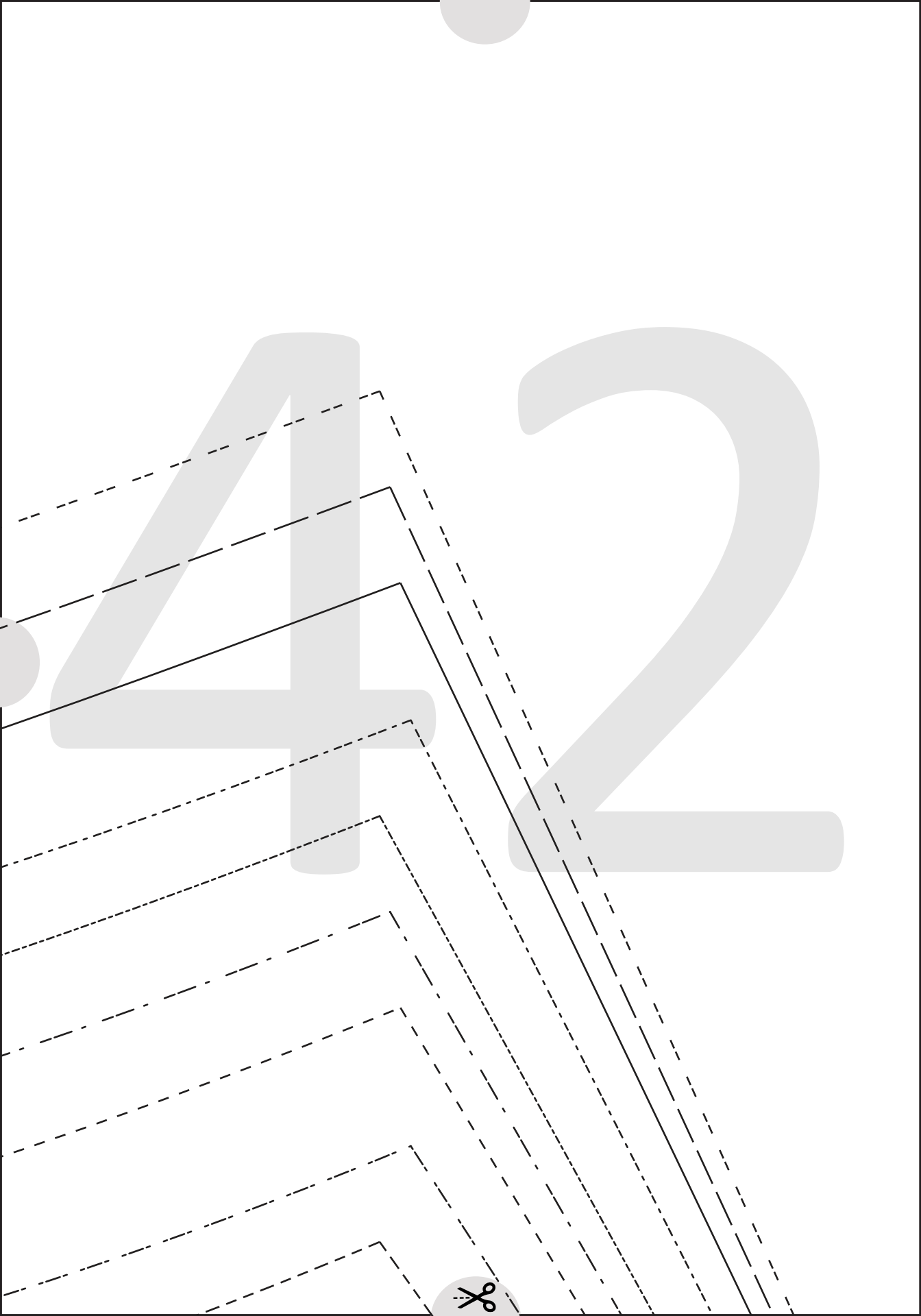
40



4

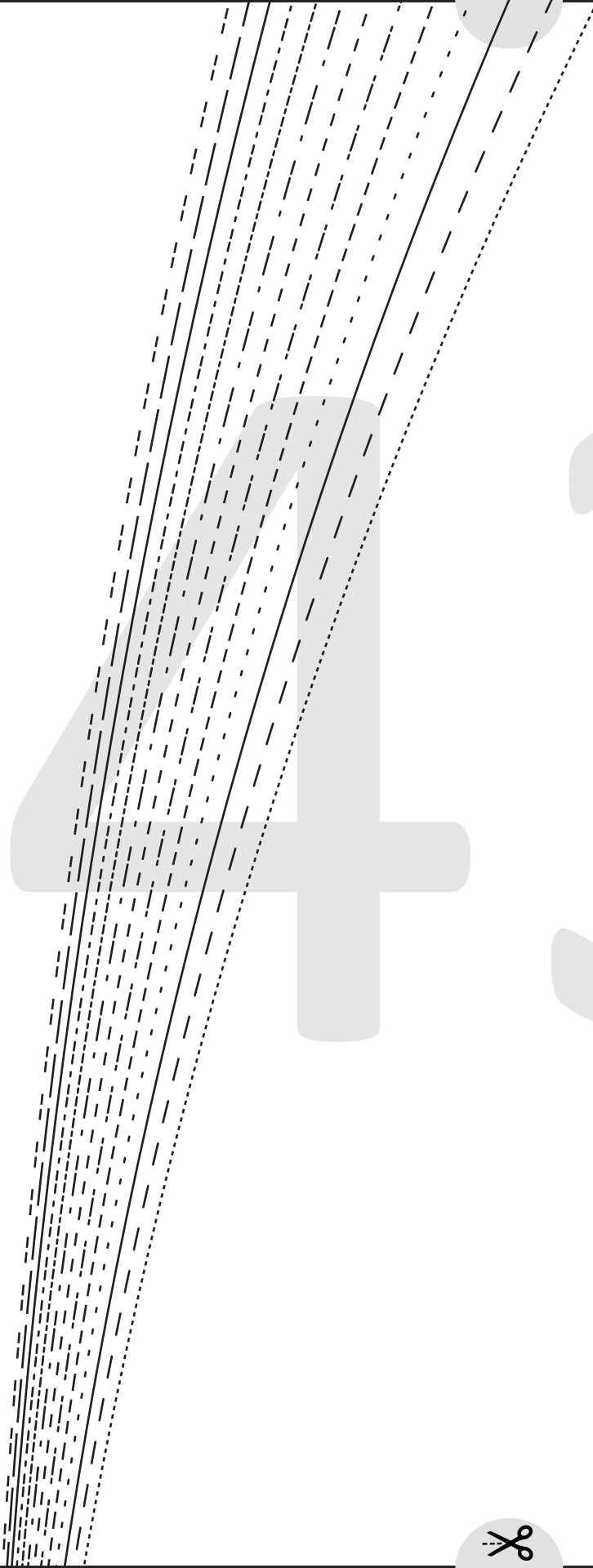
1





4

3



44

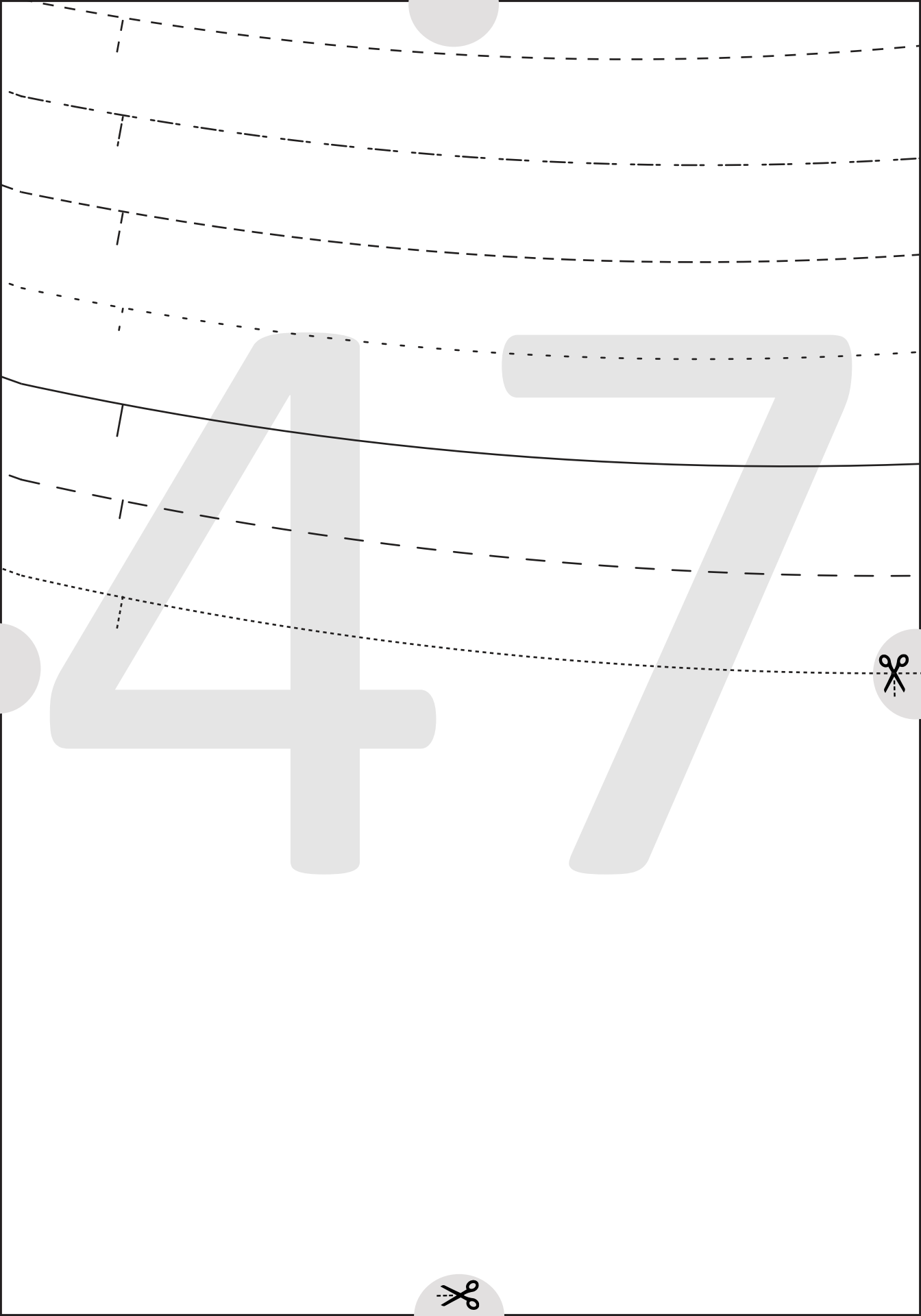


45



46

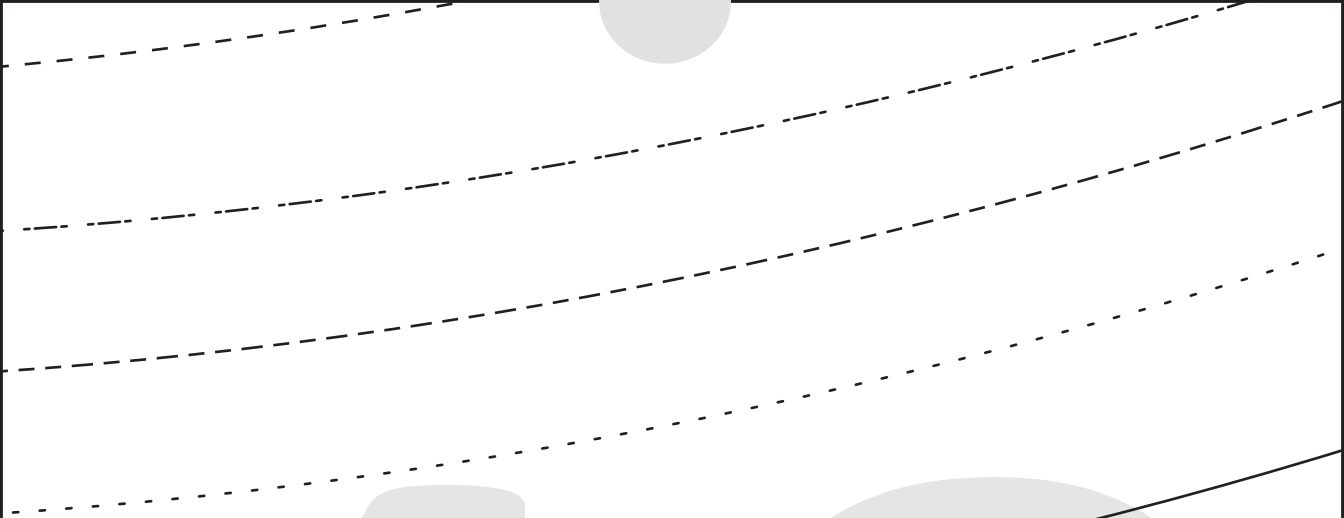




4

7





4

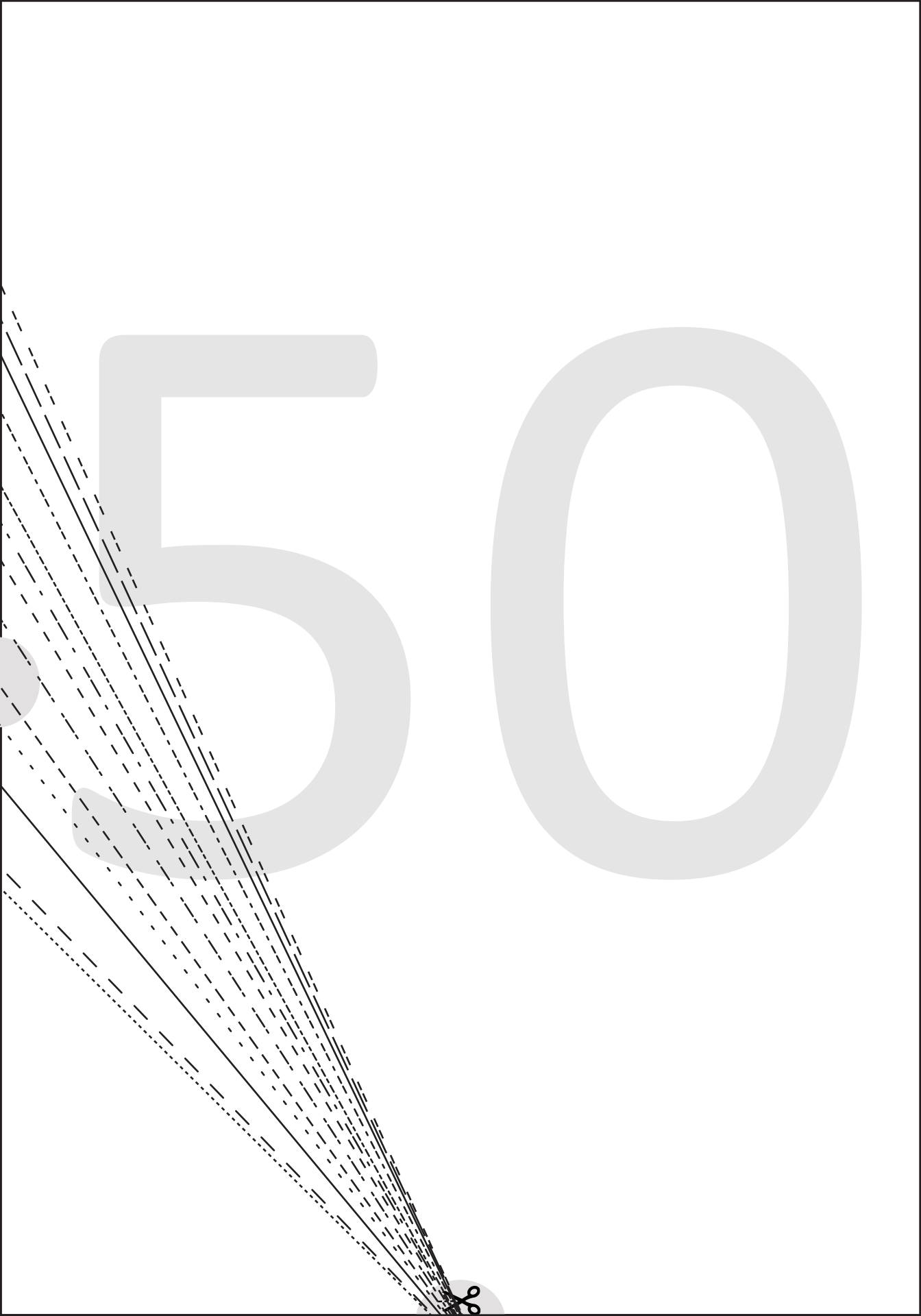
8

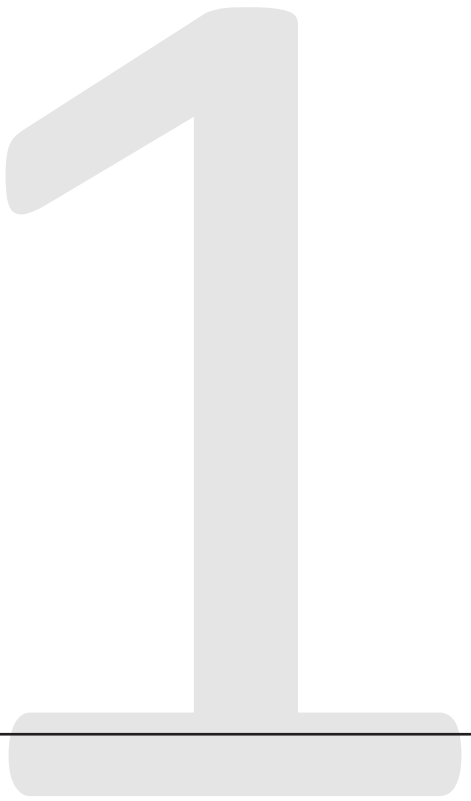


4

9







CUT HERE FOR 100 cms (39 1/2") LENGTH HEM ALLOWANCE = 3 cms (1 1/4")



LENGTHEN/SHORTEN HERE

5 2



53

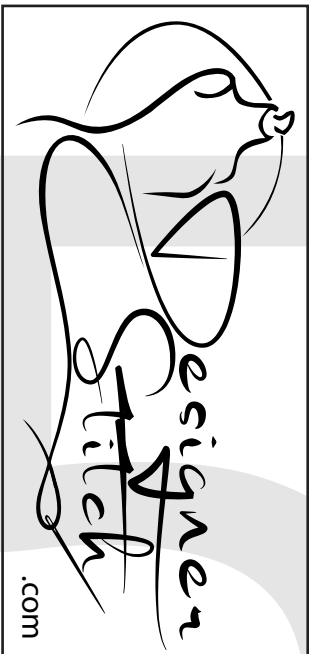


5

4

STRETCH





GRETA DRESS

#1022

4

FRONT SKIRT
FULL LENGTH

CUT 1 RIGHT SIDE UP

(6 mms (1/4") seam allowance
unless otherwise stated)

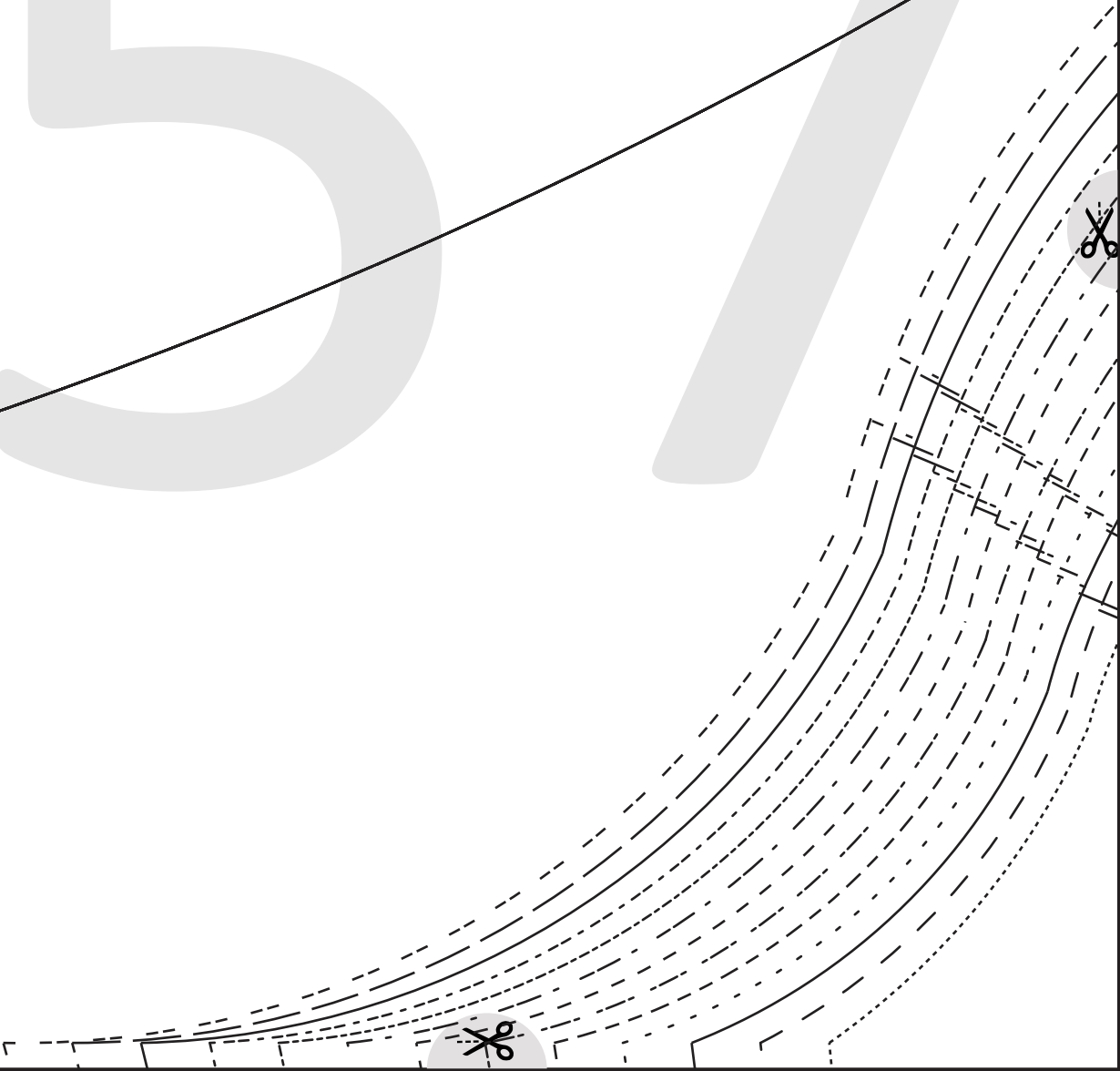


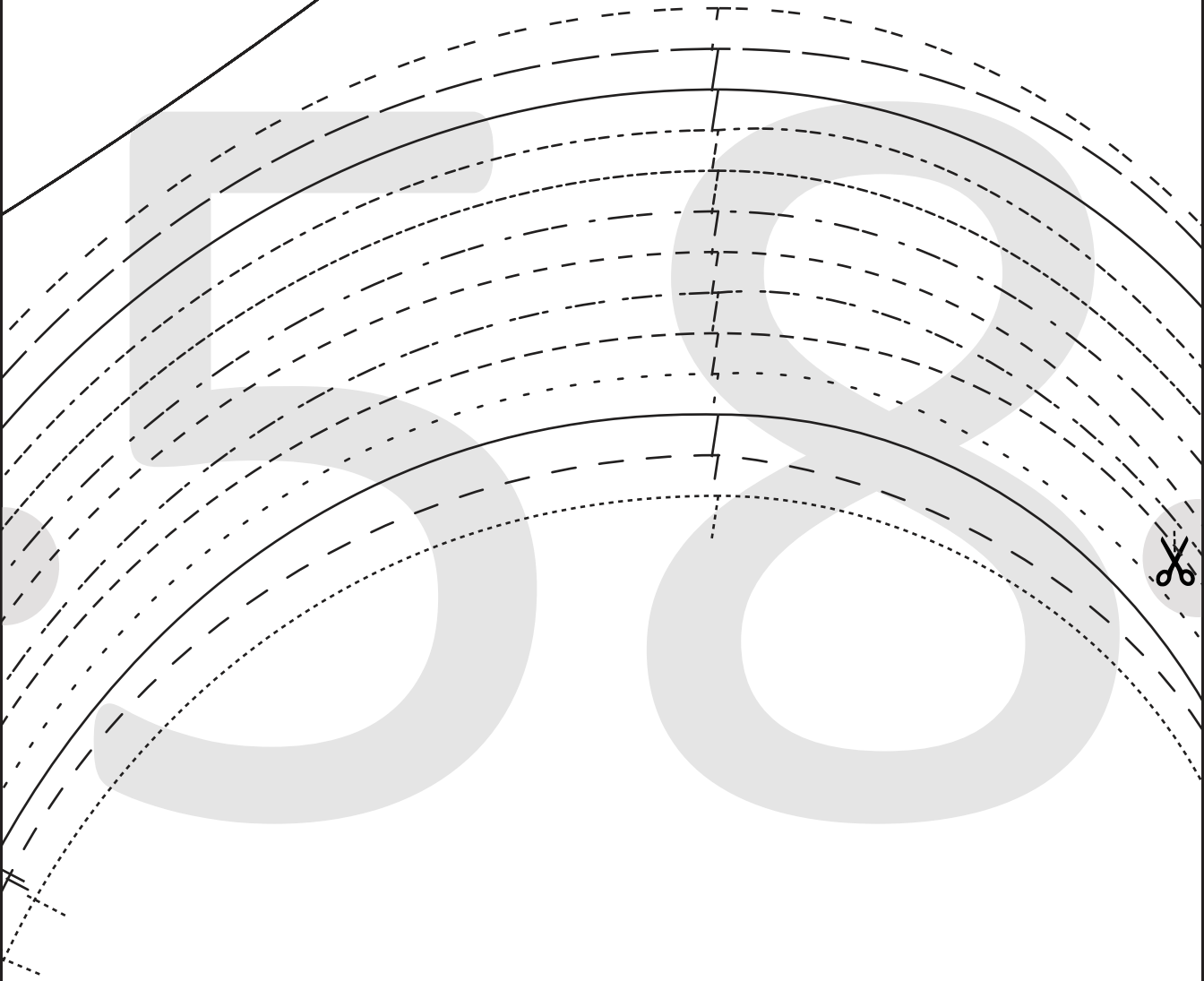
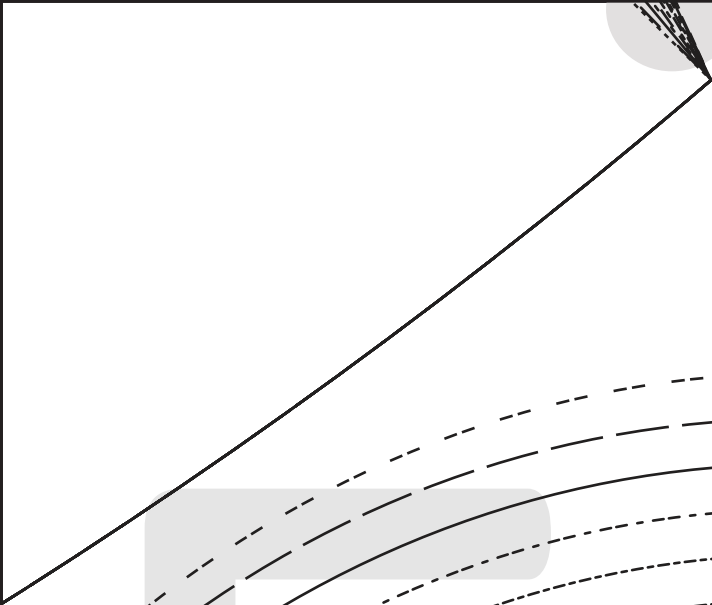
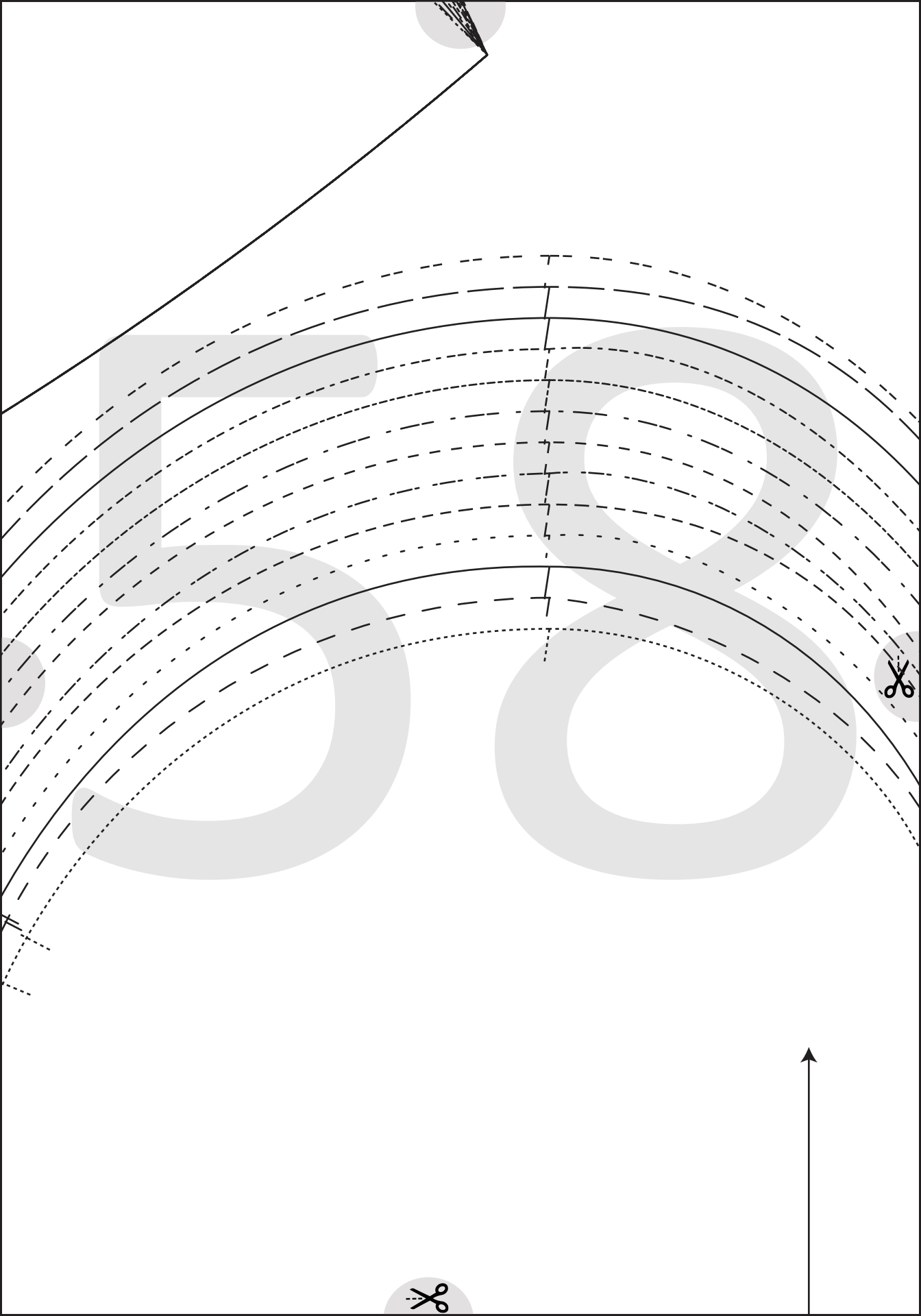
CUT TO HERE

56

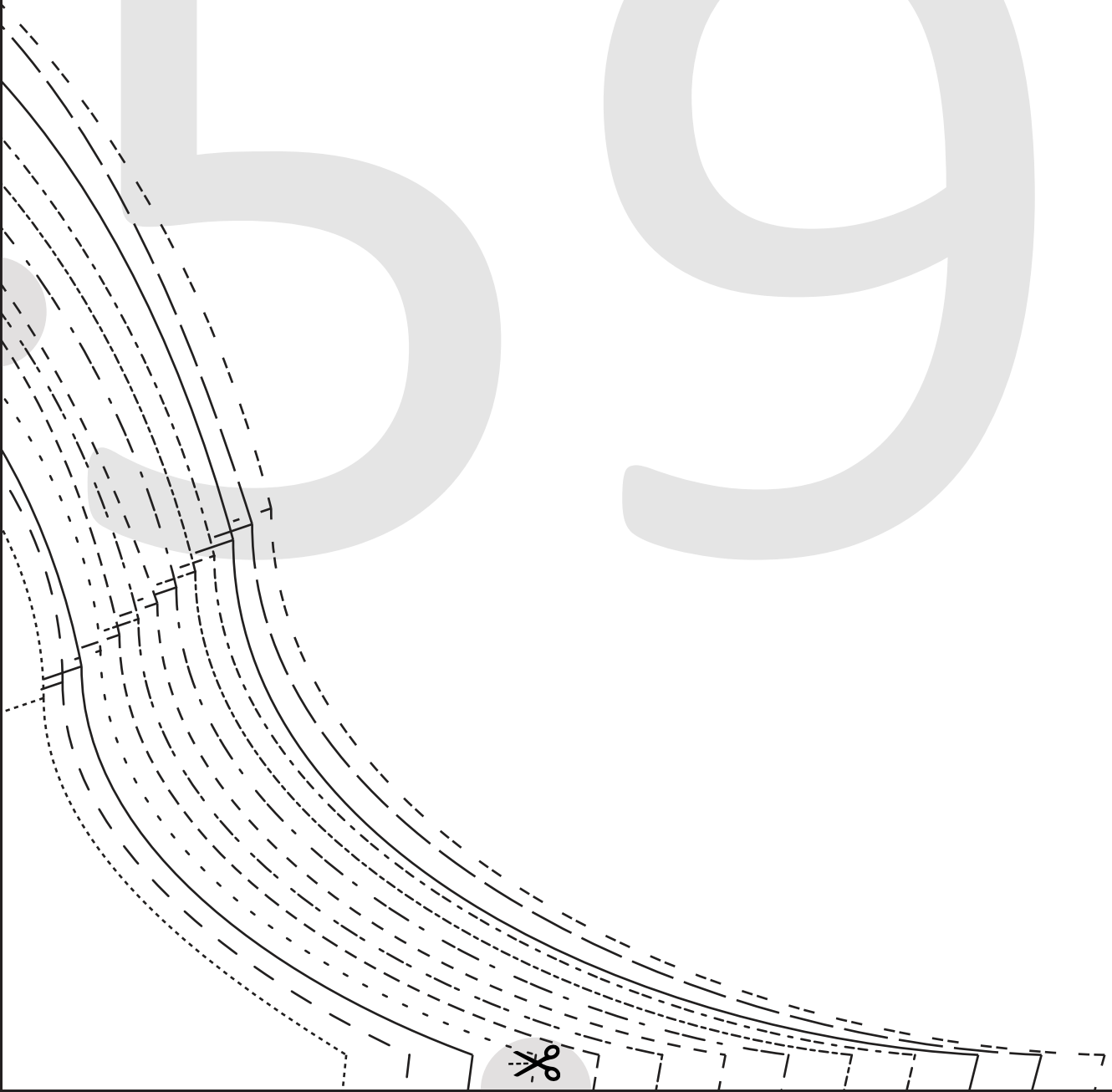


57





59



6

0



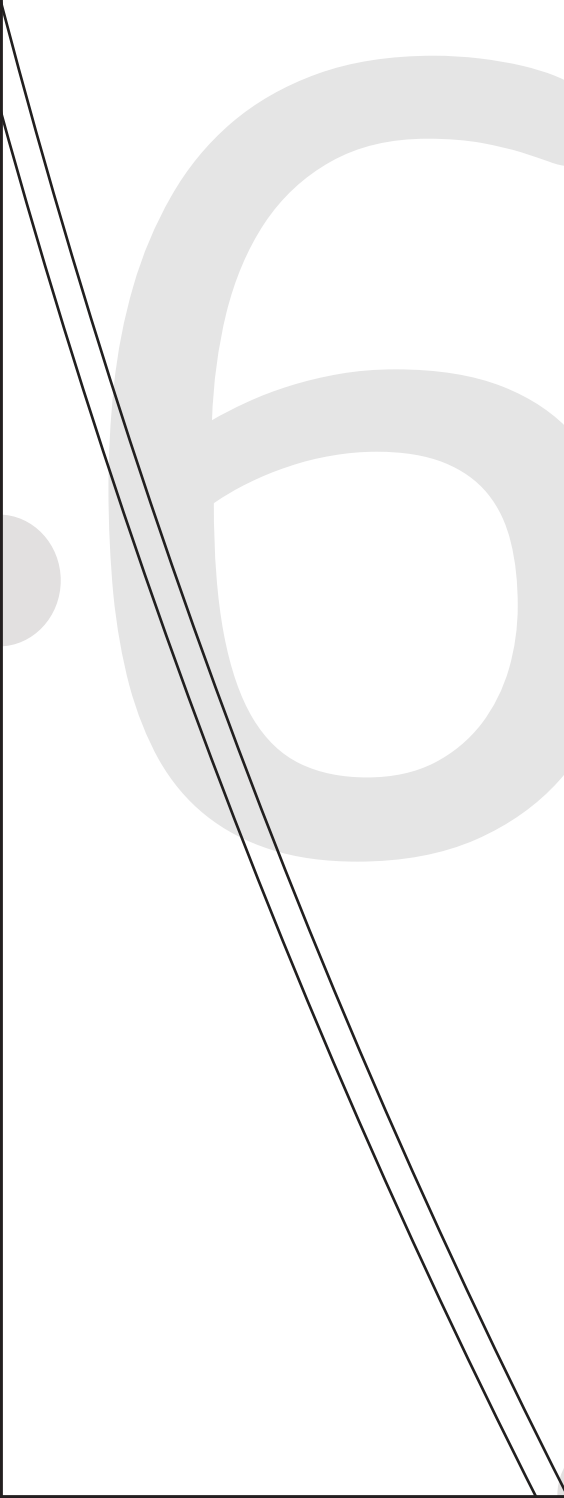
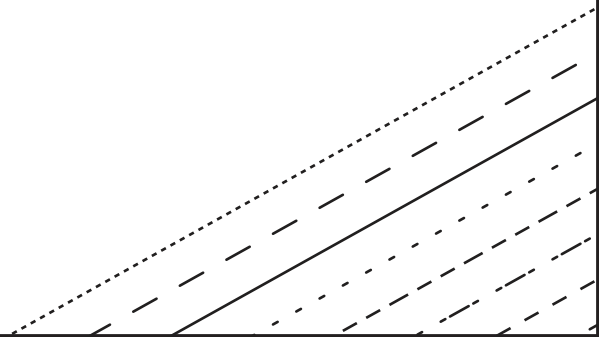
6

1



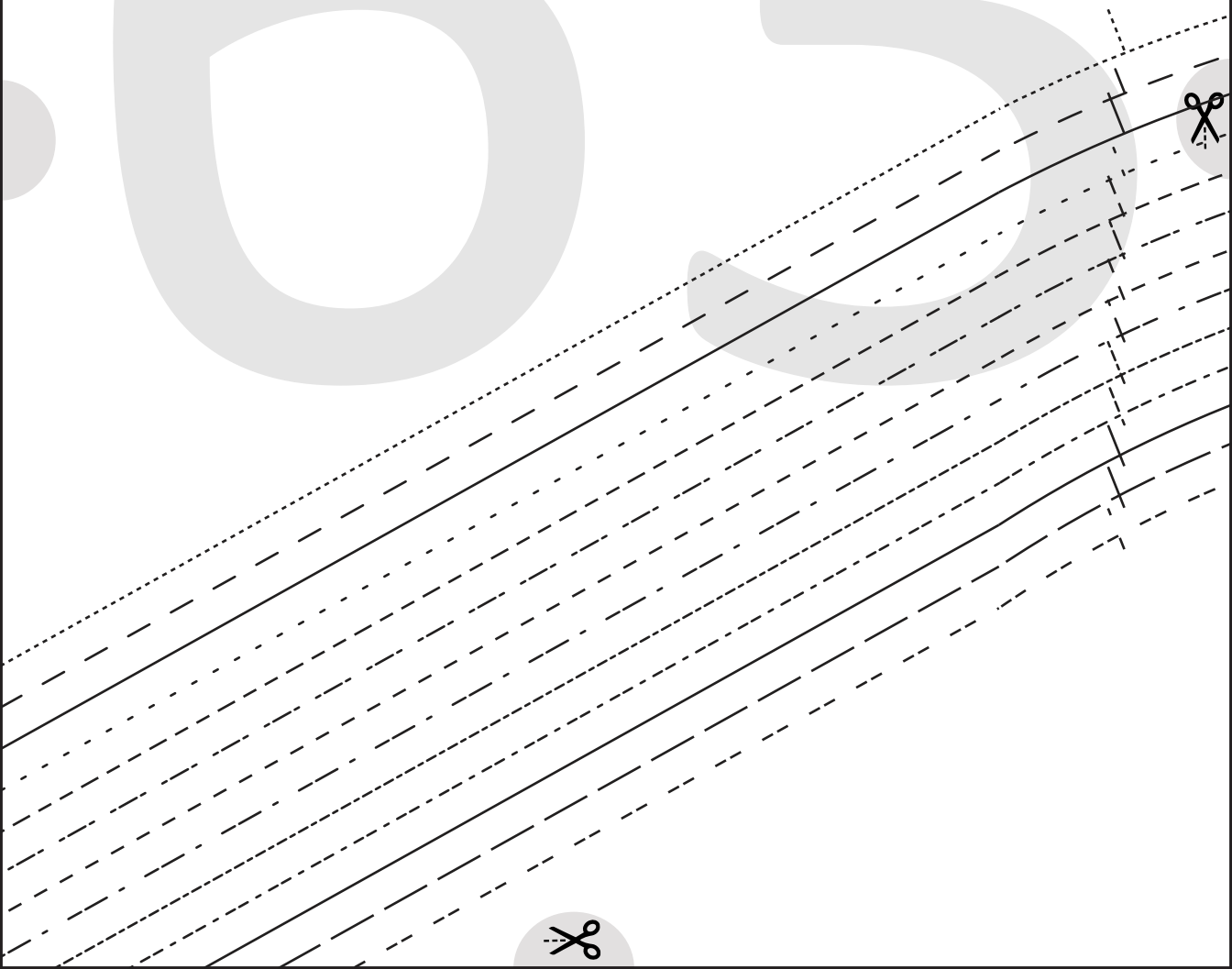
6

2

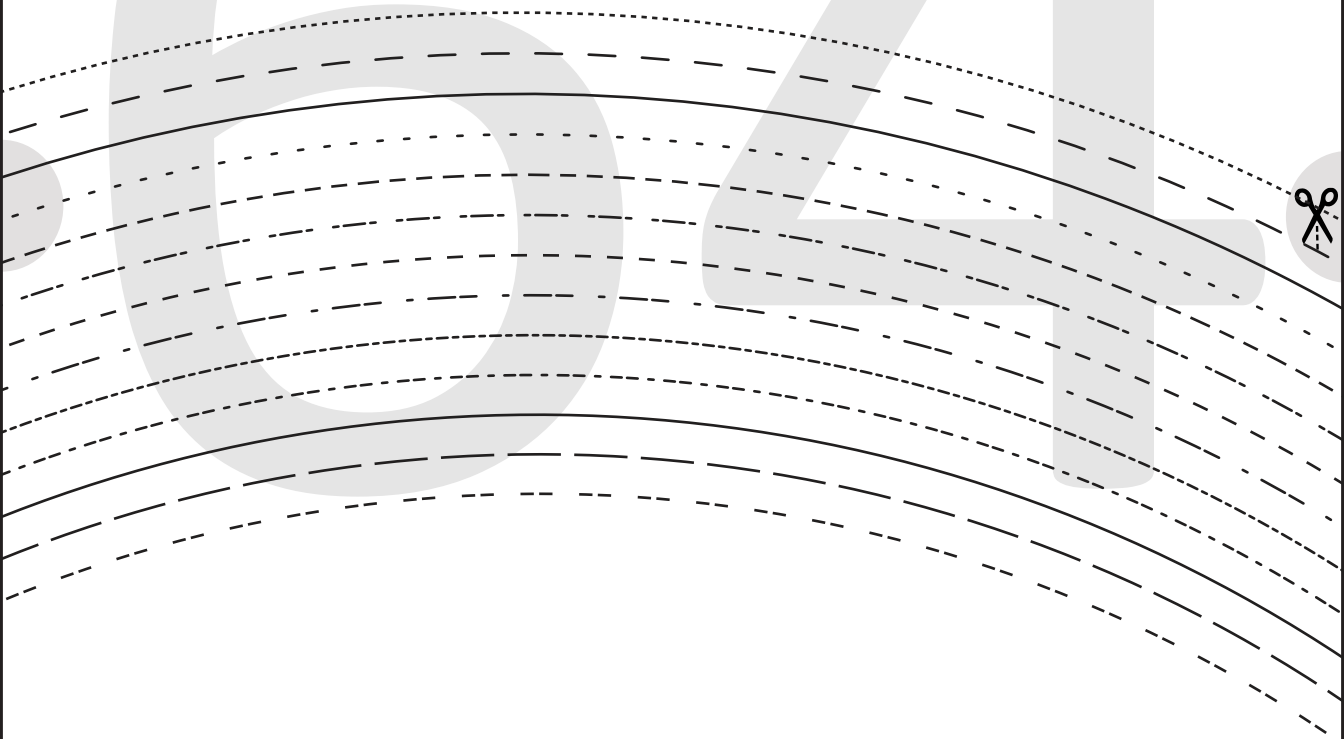


6

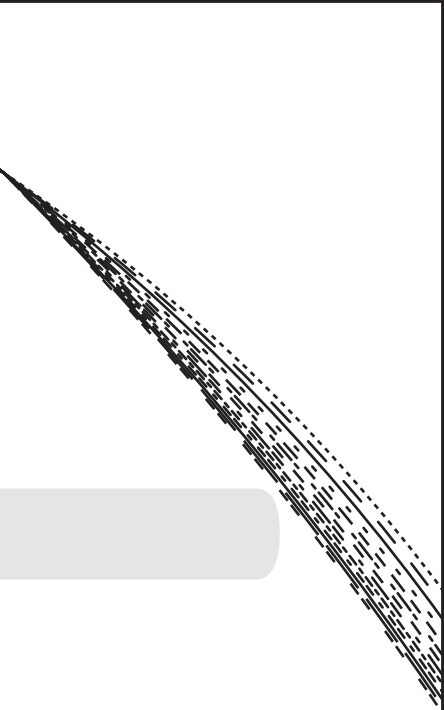
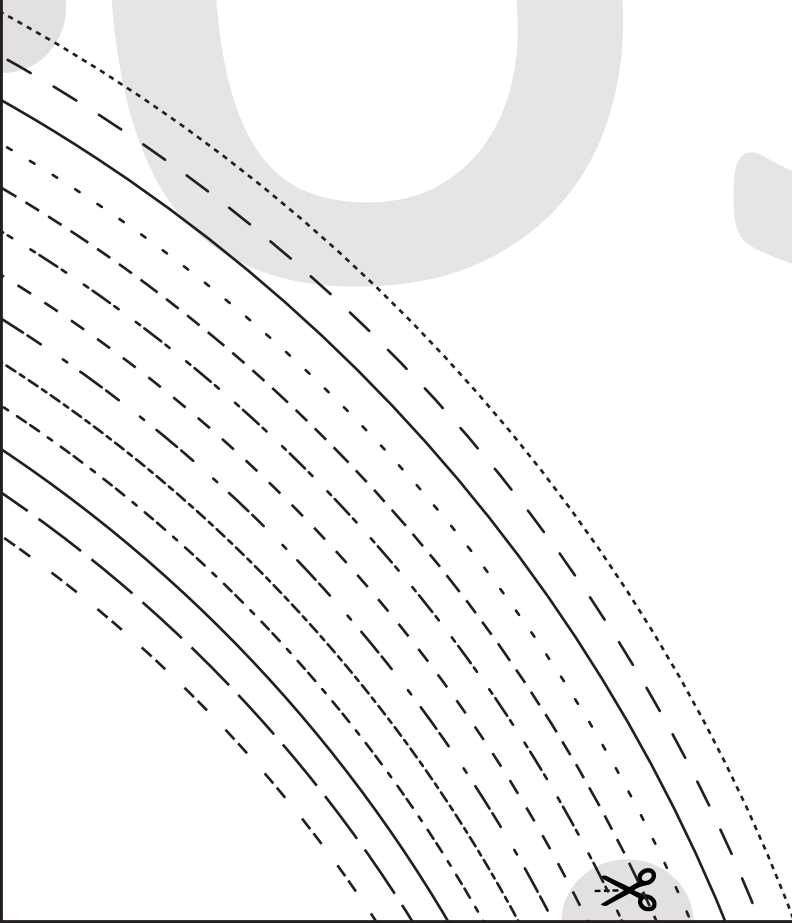
3

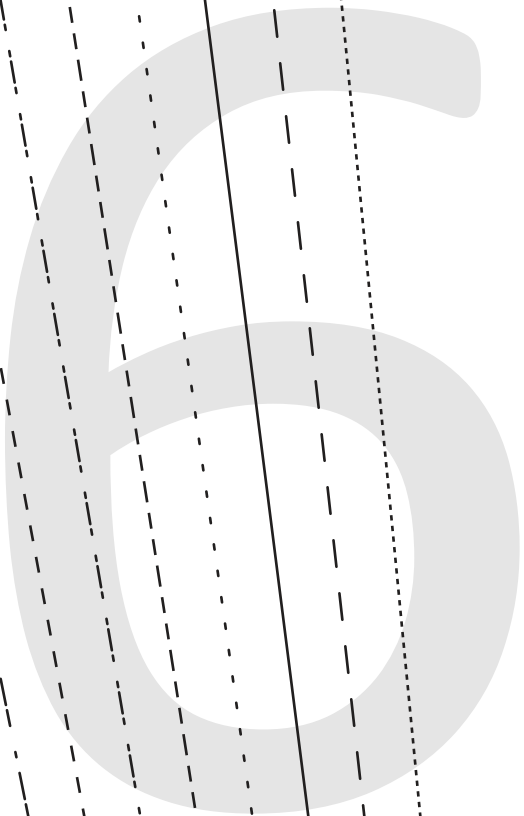
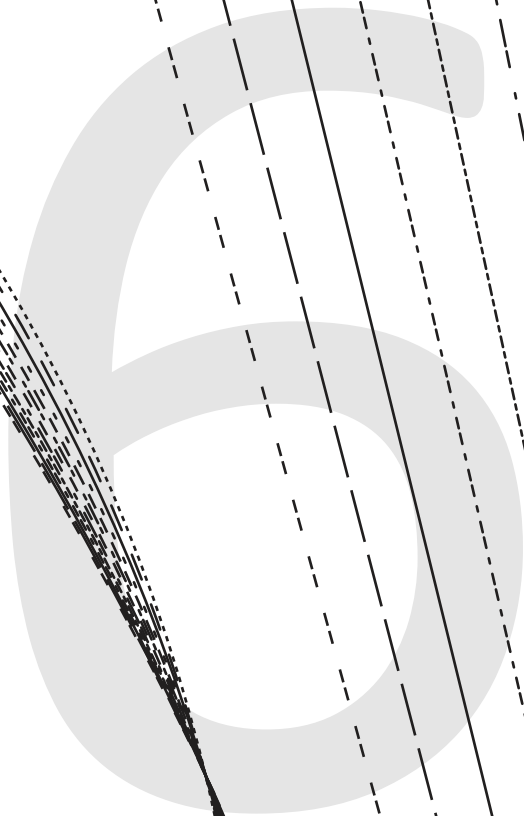
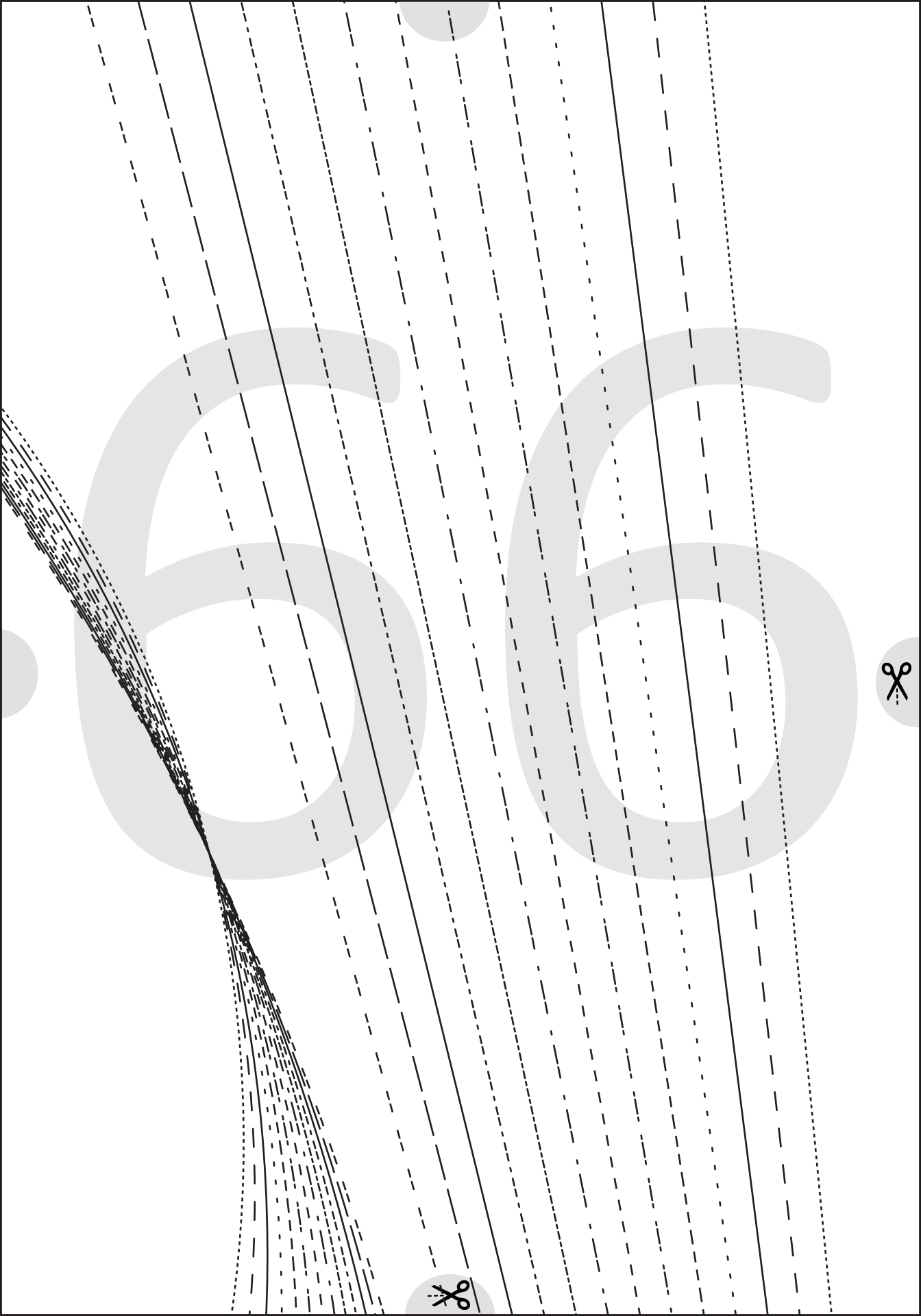


C4



65







GRETA DRESS

#1022

6

SLEEVE

CUT 2

(6 mms (1/4") seam allowance
unless otherwise stated)



6

8



6

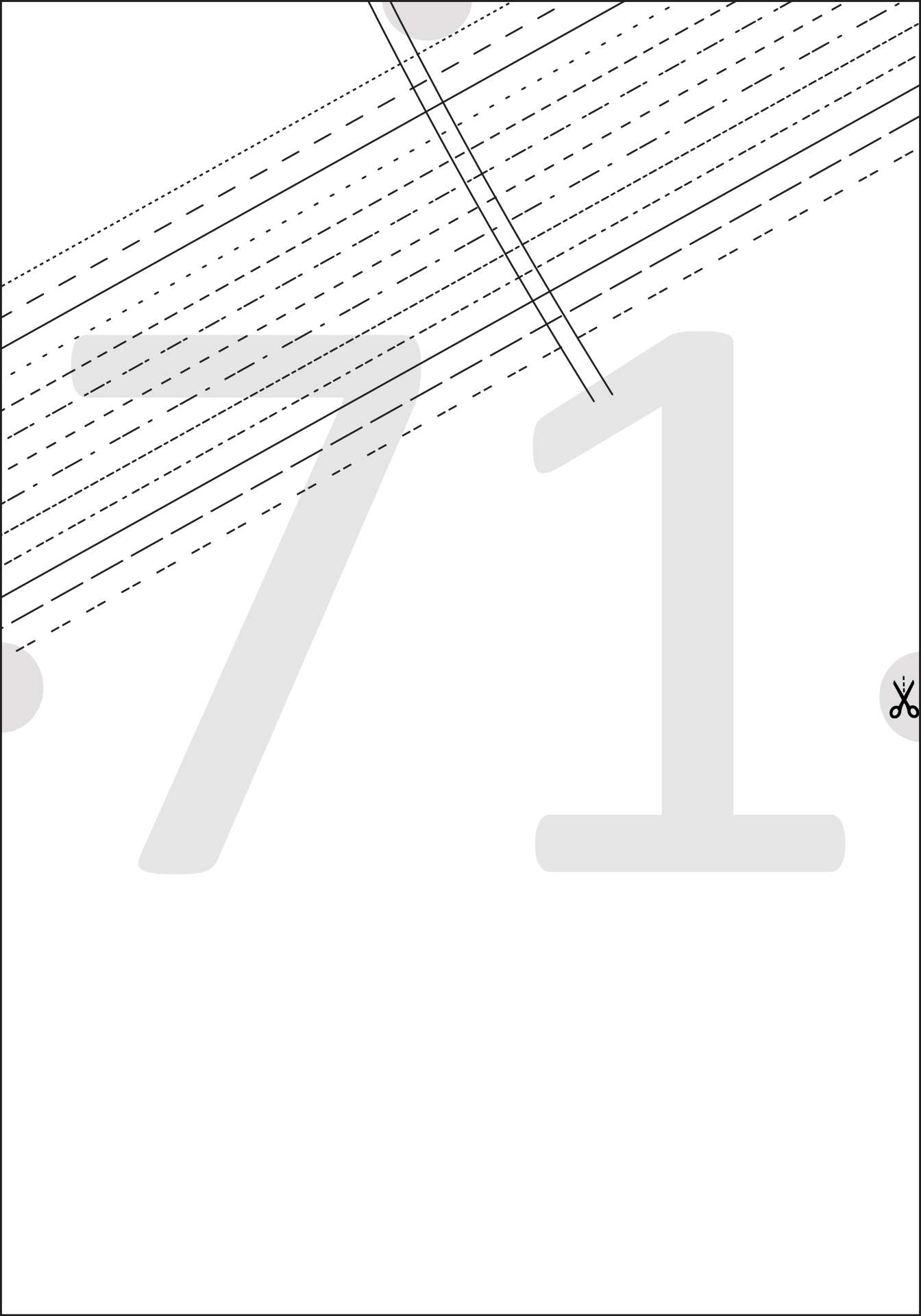
9

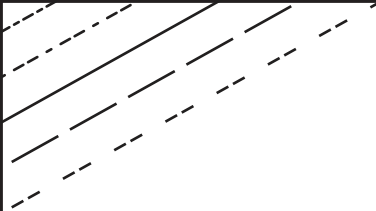


7

0







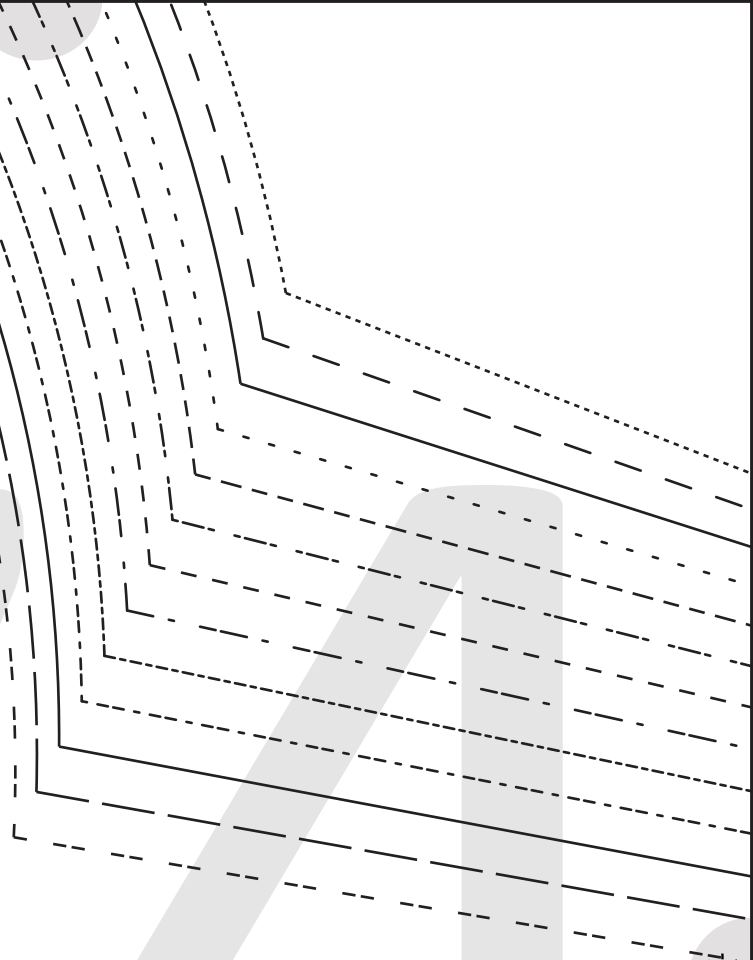
72

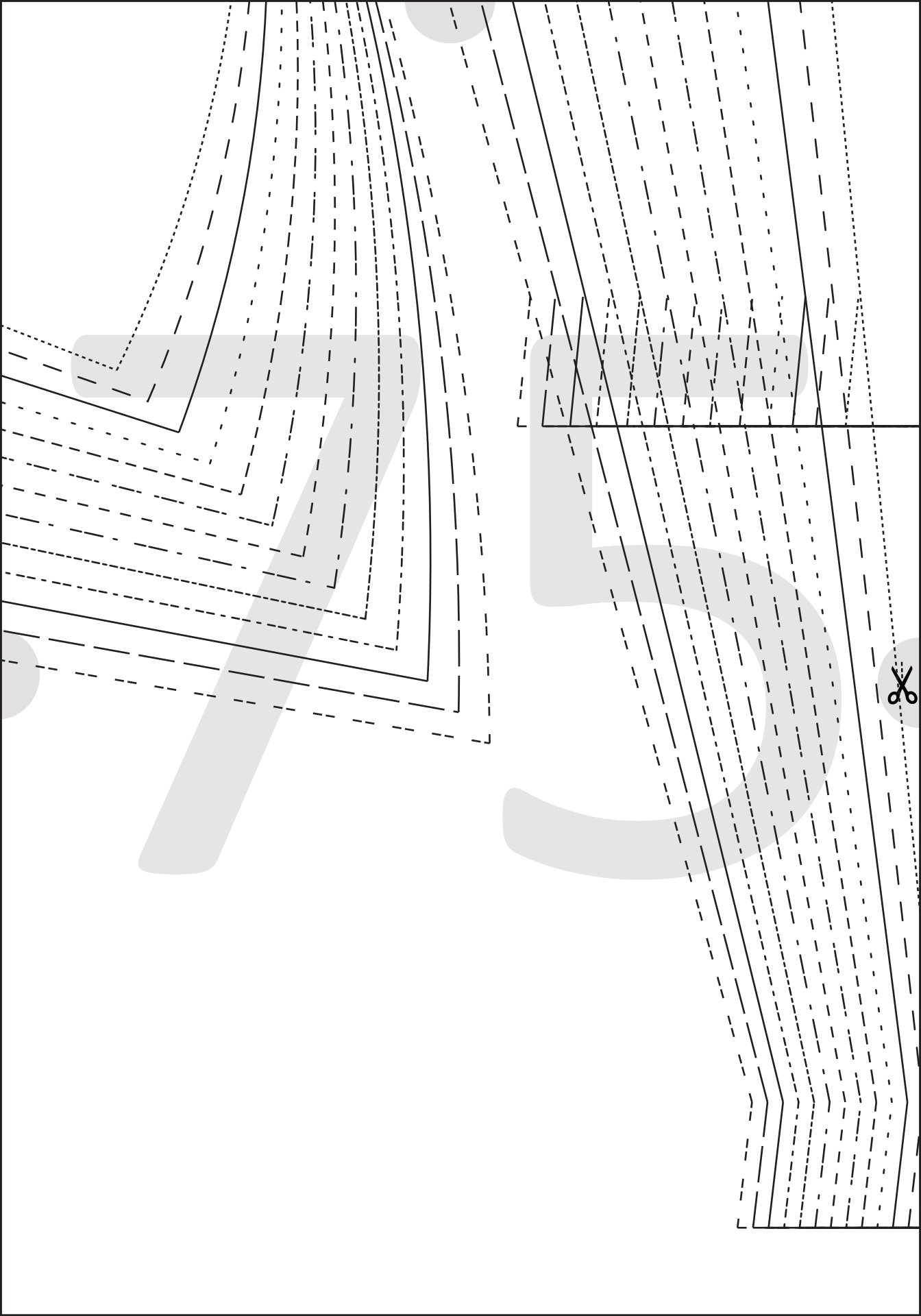
73



7

4





CUT HERE 3/4's SLEEVE LENGTH. HEM ALLOWANCE 2.5 cms (1")



CUT HERE FULL SLEEVE LENGTH. HEM ALLOWANCE 2.5 cms (1")

