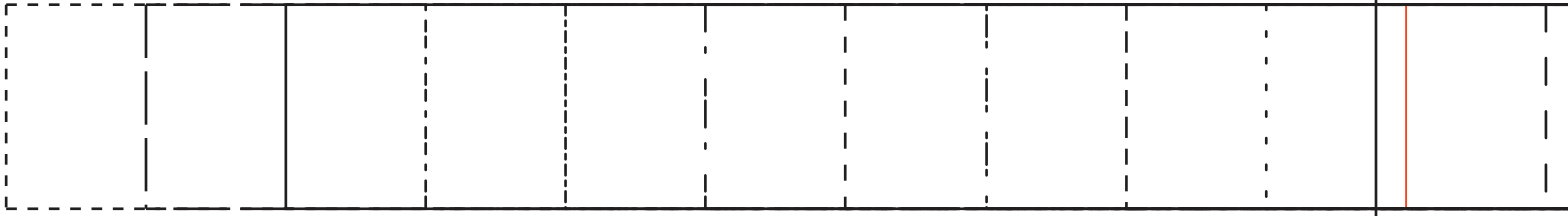
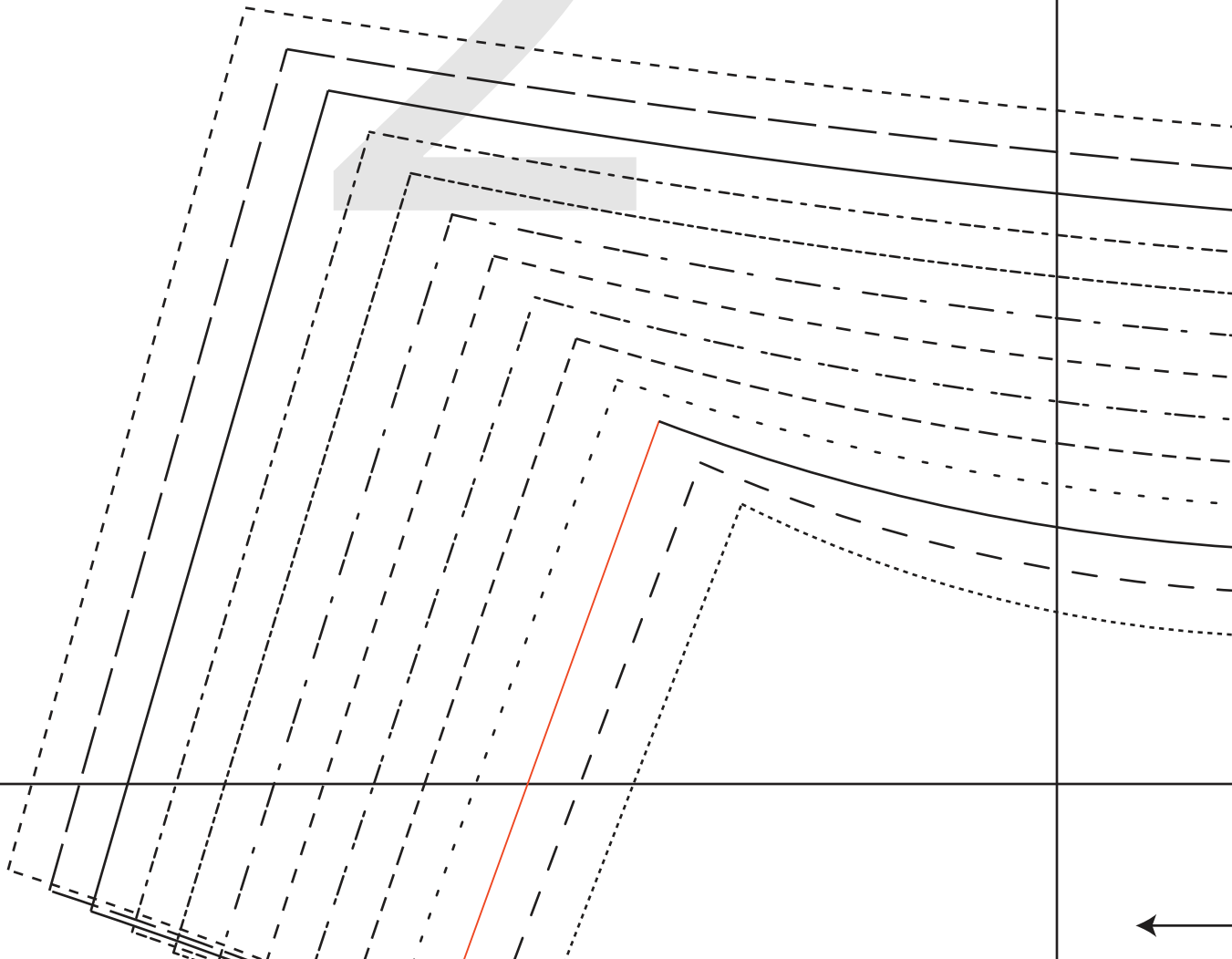
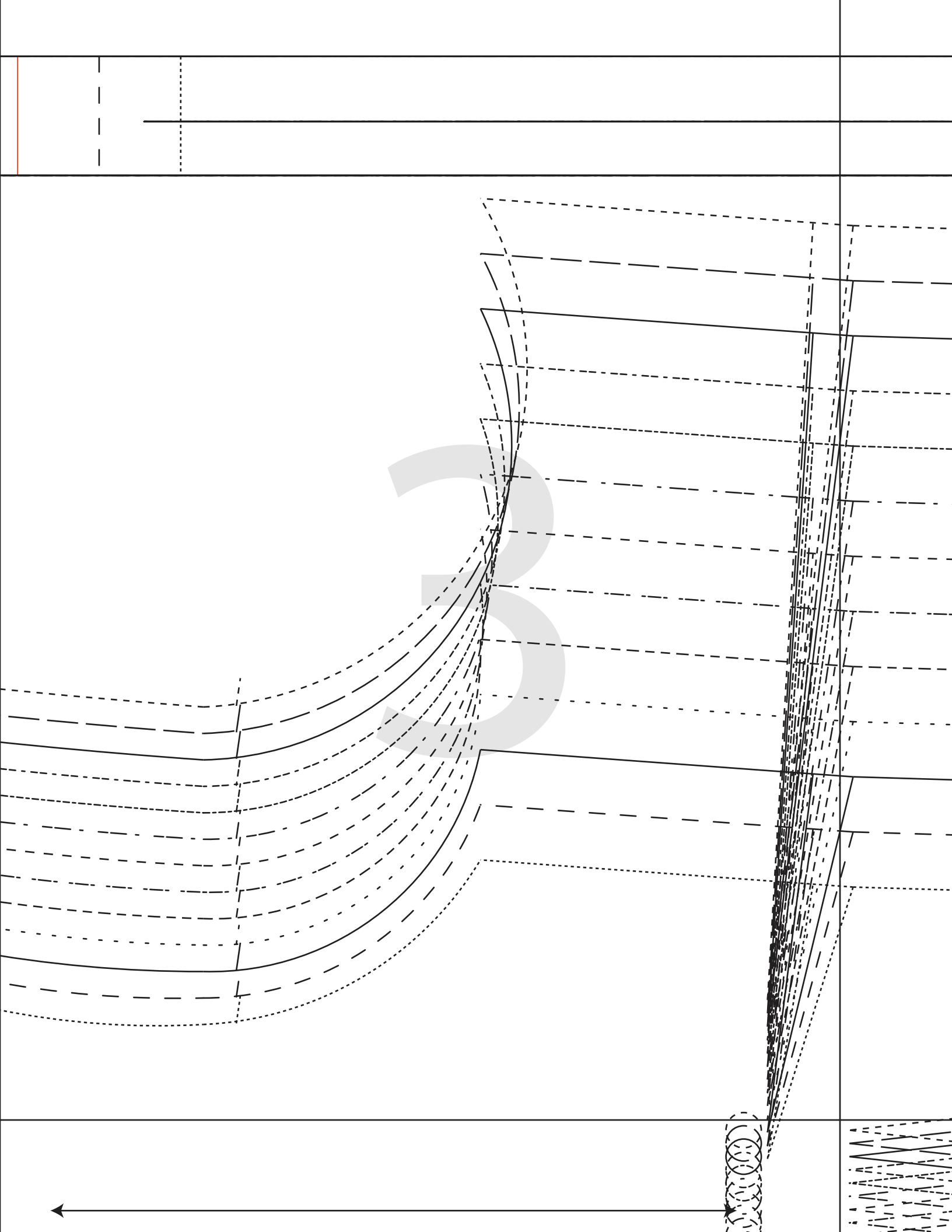


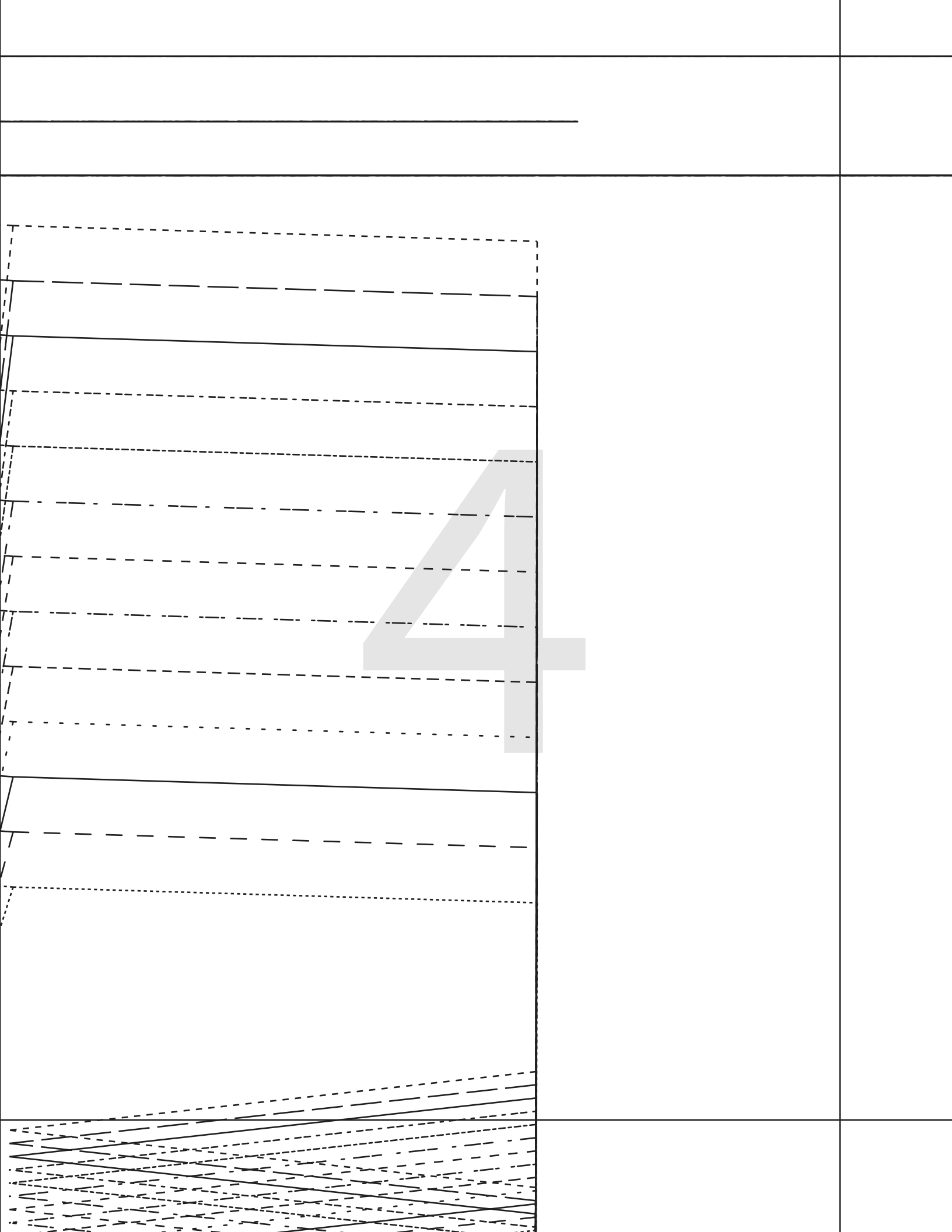
PRINT TILING TEMPLATE GUIDE FOR SIZE SPECIFIC CHOICE  
 TRIM PRINT AT HOME PATTERN



2









BF

5



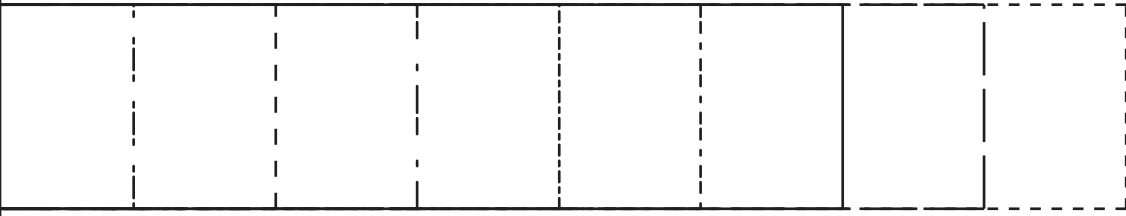
BRIELLE JUMPSUIT  
#0223

**3**  
NECK BIND - A CUP  
CUT 1

(6mms (1/4") seam allowance unless otherwise stated)

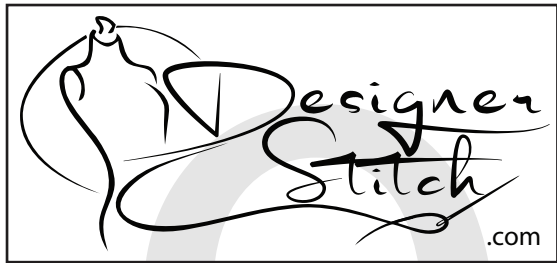
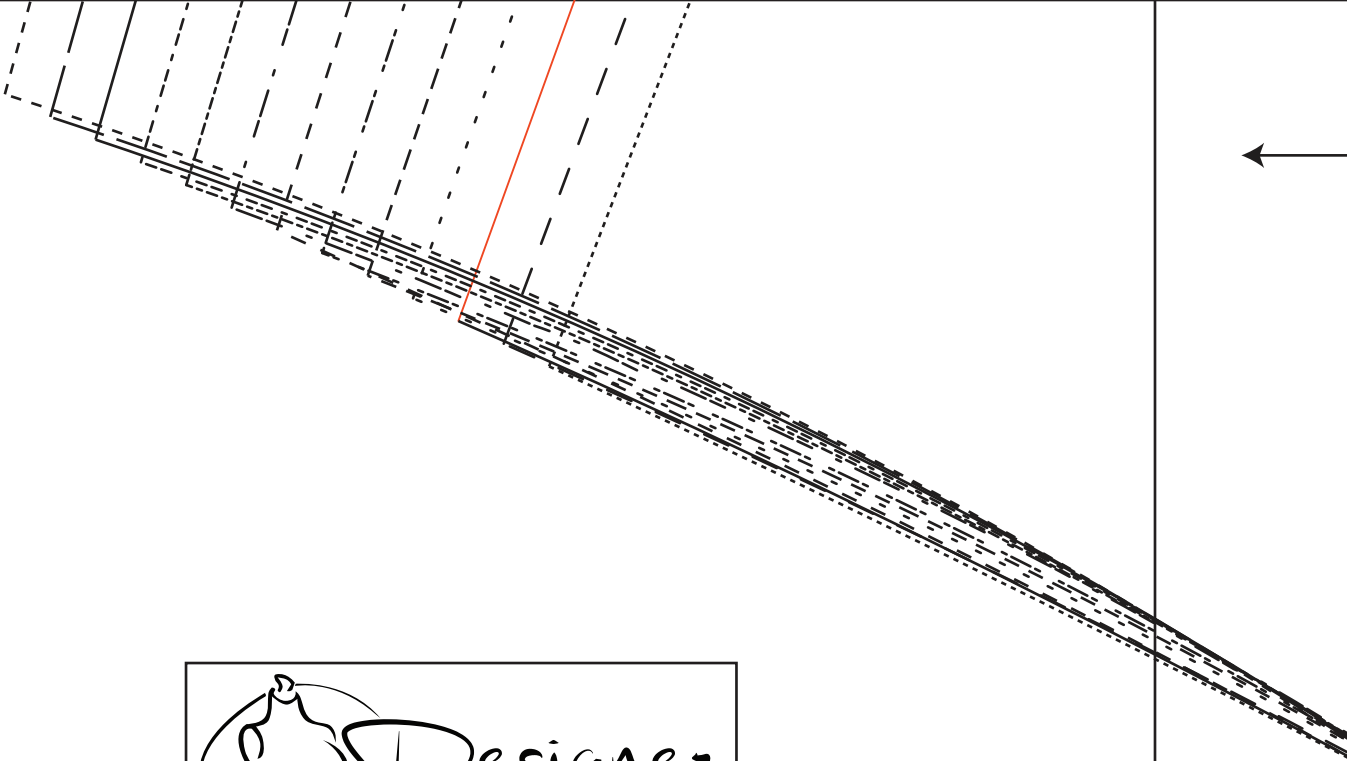


7



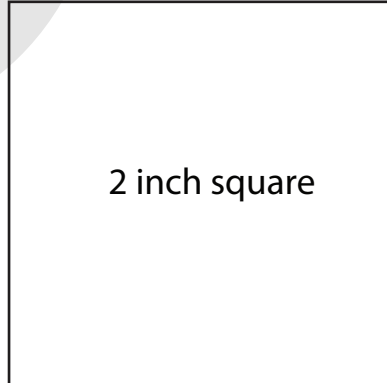
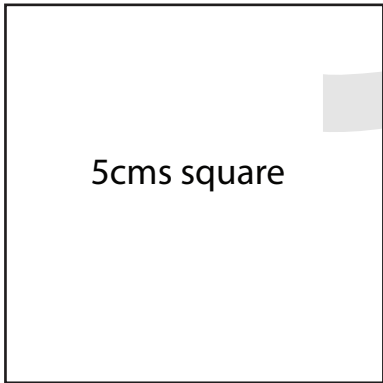
8





# BRIELLE JUMPSUIT

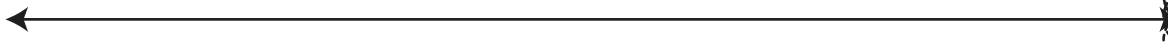
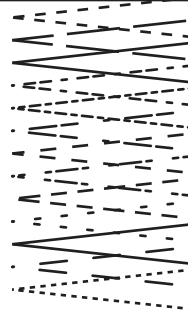
## #0223



100



BRIEF JE UIMPSTIJT



# BRIELLE JUMPSUIT

#0223

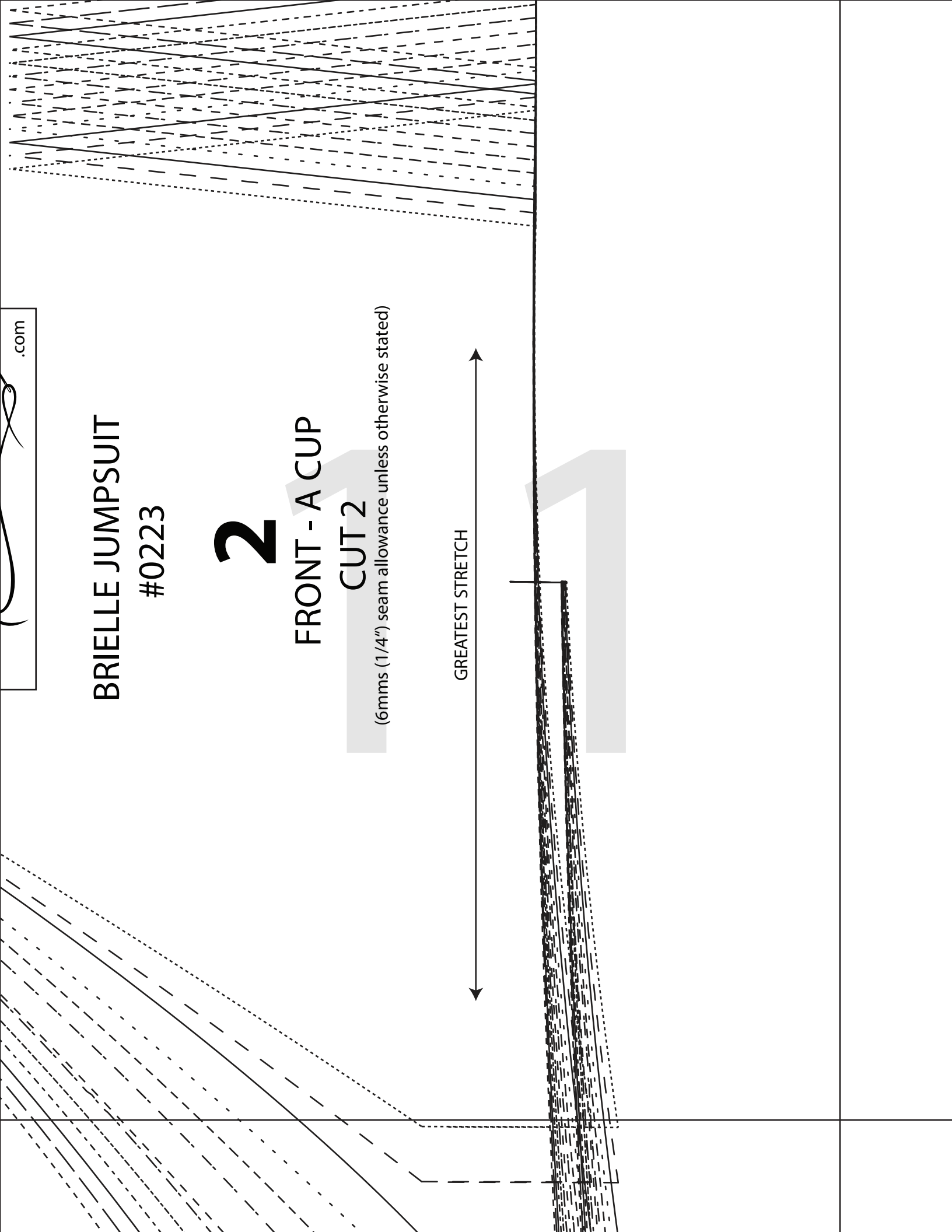
# 2

## FRONT - A CUP

### CUT 2

(6mms (1/4") seam allowance unless otherwise stated)

GREATEST STRETCH



The diagram shows a technical drawing of a jumpsuit front with a cup. It includes a waistband with a button and a pocket. A vertical double-headed arrow labeled 'GREATEST STRETCH' indicates the stretch direction. A large grey number '2' is overlaid on the diagram. The drawing uses solid lines for the main pattern and dashed lines for seam allowances. The top and bottom edges are curved to show the fit.

