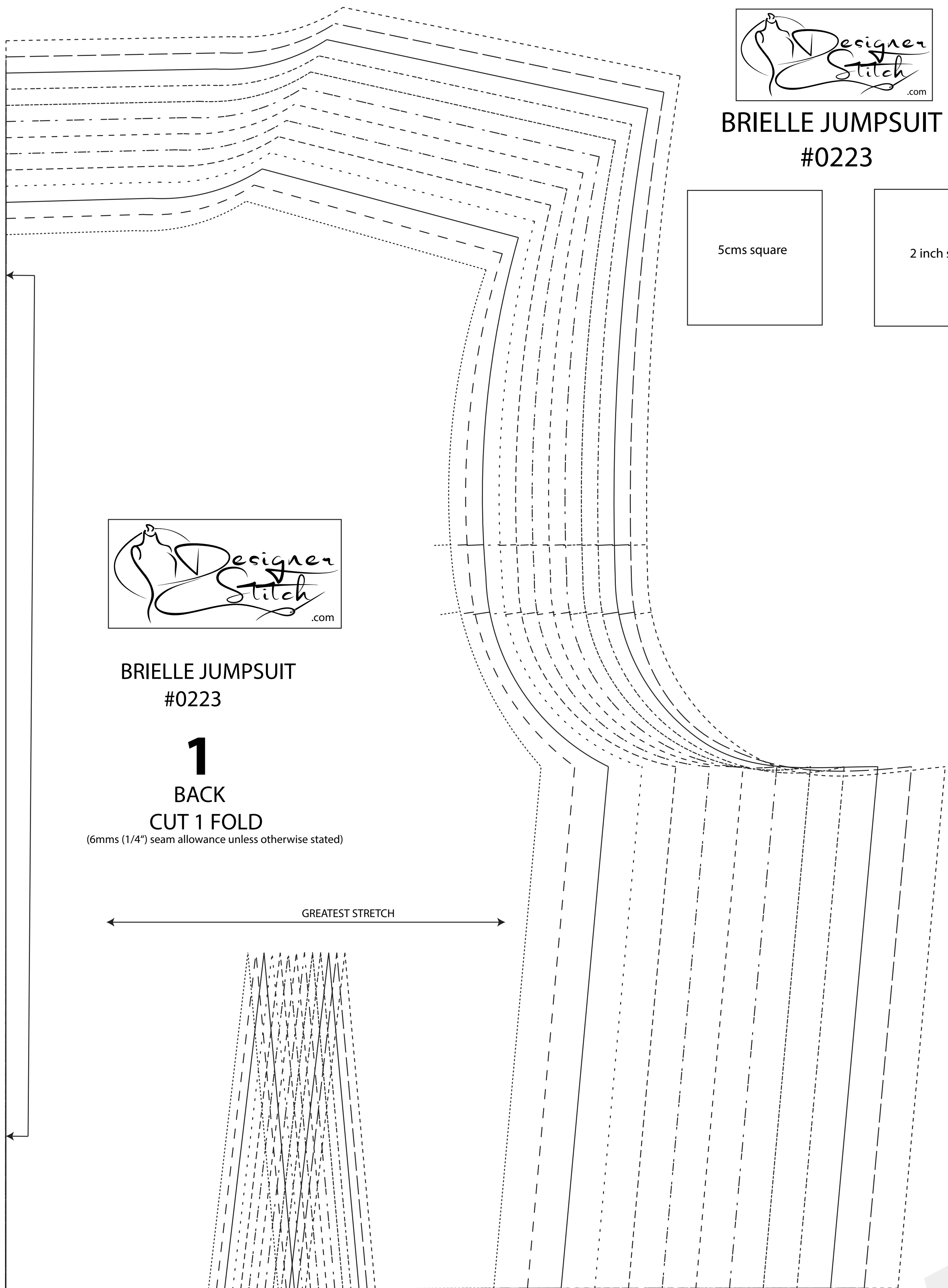
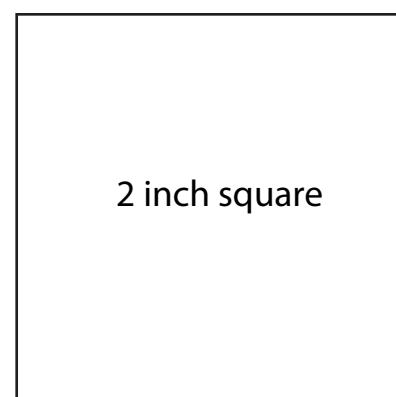
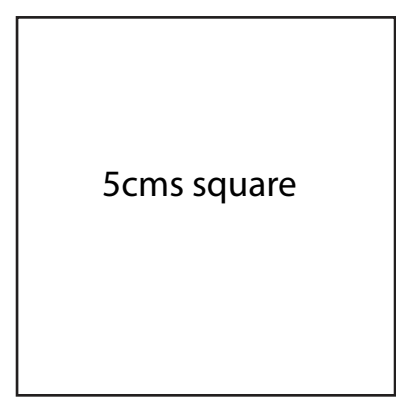




BRIELLE JUMPSUIT #0223



BRIELLE JUMPSUIT #0223

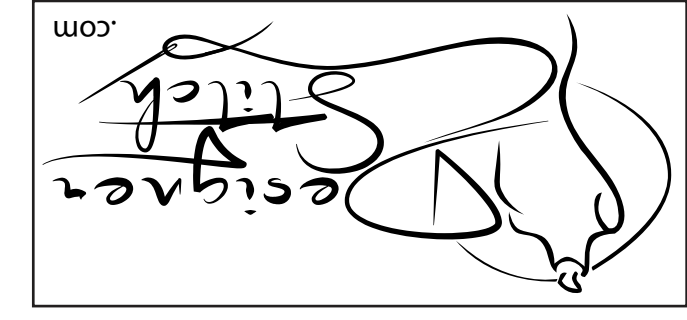
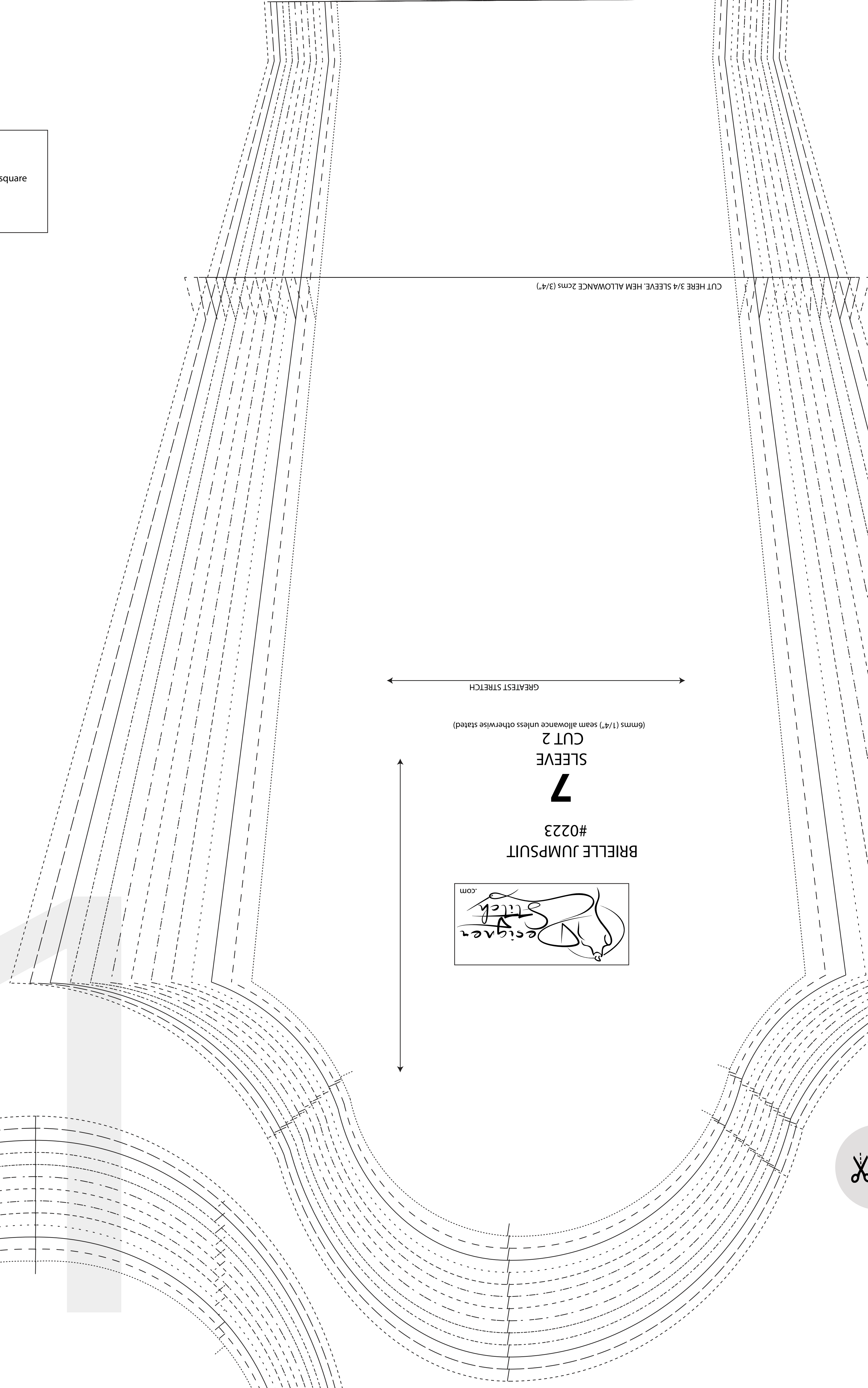
1

BACK
CUT 1 FOLD

(6mms (1/4") seam allowance unless otherwise stated)

GREATEST STRETCH

CUT HERE 3/4 SLEEVE HEM ALLOWANCE 2cms (3/4")



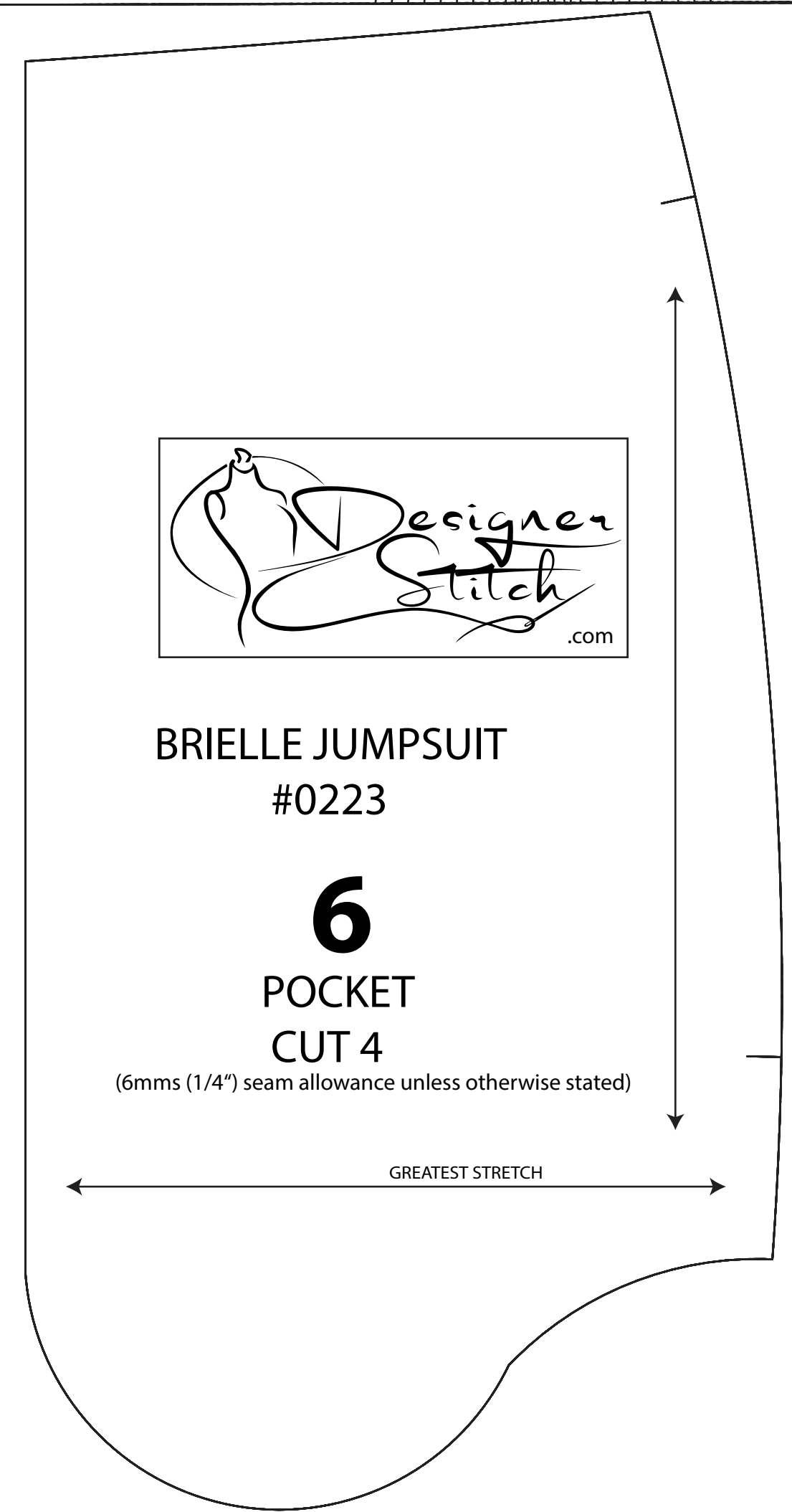
BRIELLE JUMPSUIT #0223

7

SLEEVE
CUT 2

(6mms (1/4") seam allowance unless otherwise stated)

GREATEST STRETCH



BRIELLE JUMPSUIT #0223

6

POCKET
CUT 4

(6mms (1/4") seam allowance unless otherwise stated)

GREATEST STRETCH



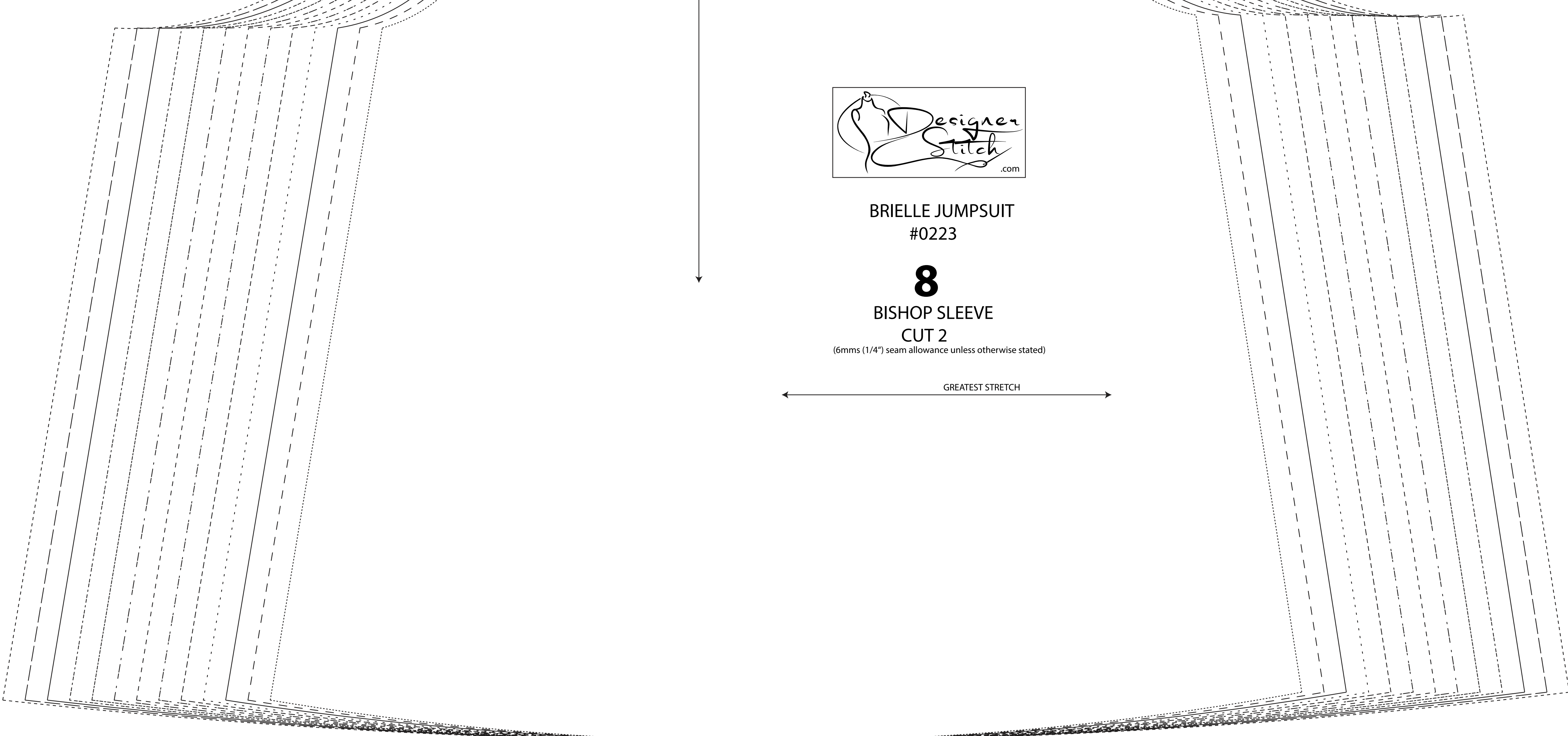
BRIELLE JUMPSUIT #0223

8

BISHOP SLEEVE
CUT 2

(6mms (1/4") seam allowance unless otherwise stated)

GREATEST STRETCH



FRONT B Cup



BRIELLE JUMPSUIT
#0223

FOLDLINE

9

BISHOP SLEEVE CUFF
CUT 2

(6mms (1/4") seam allowance unless otherwise stated)

GREATEST STRETCH



BRIELLE JUMPSUIT
#0223

2

FRONT - B CUP
CUT 2

(6mms (1/4") seam allowance unless otherwise stated)

GREATEST STRETCH



BRIELLE JUMPSUIT
#0223

12

SHORT CIRCLE SLEEVE
CUT 2

(6mms (1/4") seam allowance unless otherwise stated)

GREATEST STRETCH

5

FRONT LEG

CUT 2

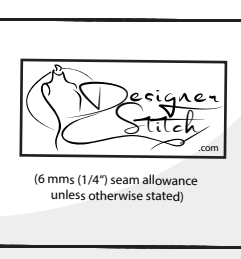
(ems: 1/4" seam allowance unless otherwise stated)

GREATEST STRETCH

KNEELINE

CUT HERE CROPPED LENGTH LEG HEM ALLOWANCE = 3cms (1 1/4")

CUT HERE FULL LENGTH LEG HEM ALLOWANCE = 3cms (1 1/4")



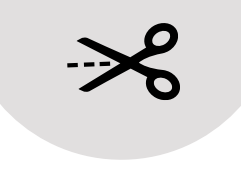
BRIELLE JUMPSUIT #0223 10 ARMHOLE BIND CUT 2

GREATEST STRETCH

KNEELINE

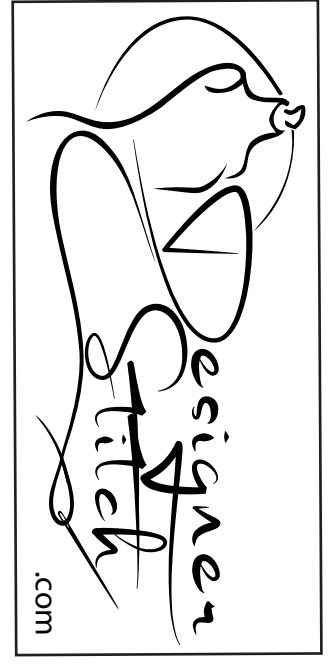
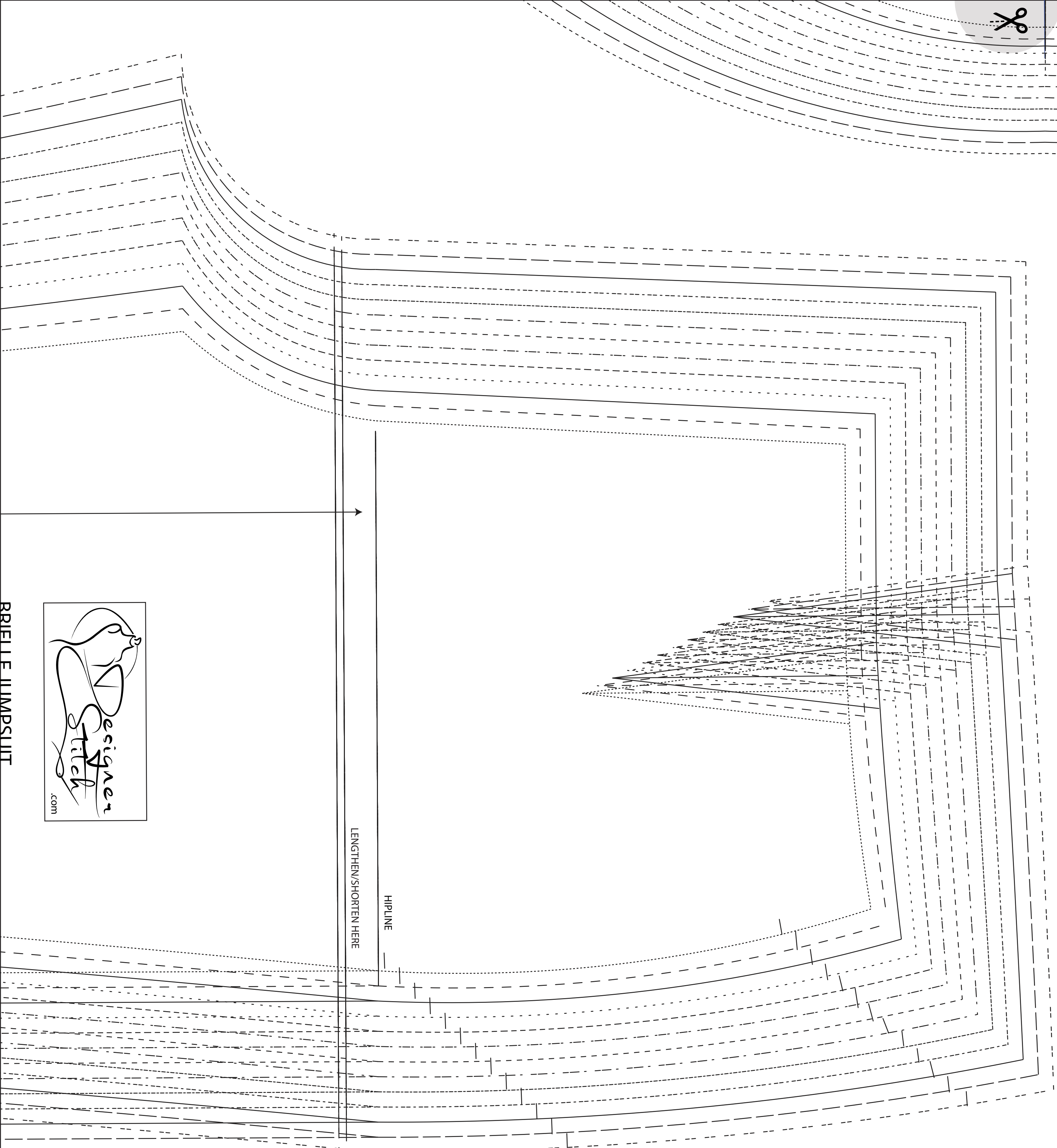
CUT HERE CROPPED LENGTH LEG HEM ALLOWANCE = 3cms (1 1/4")

CUT HERE FULL LENGTH LEG HEM ALLOWANCE = 3cms (1 1/4")



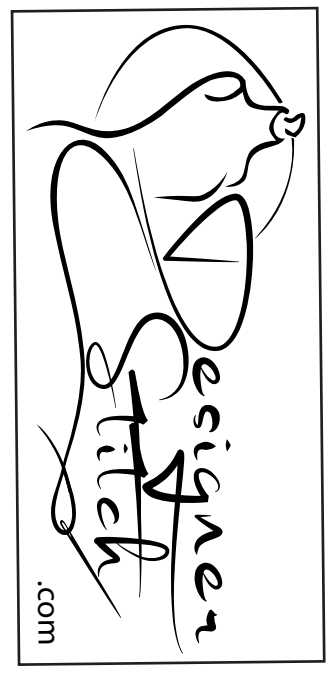
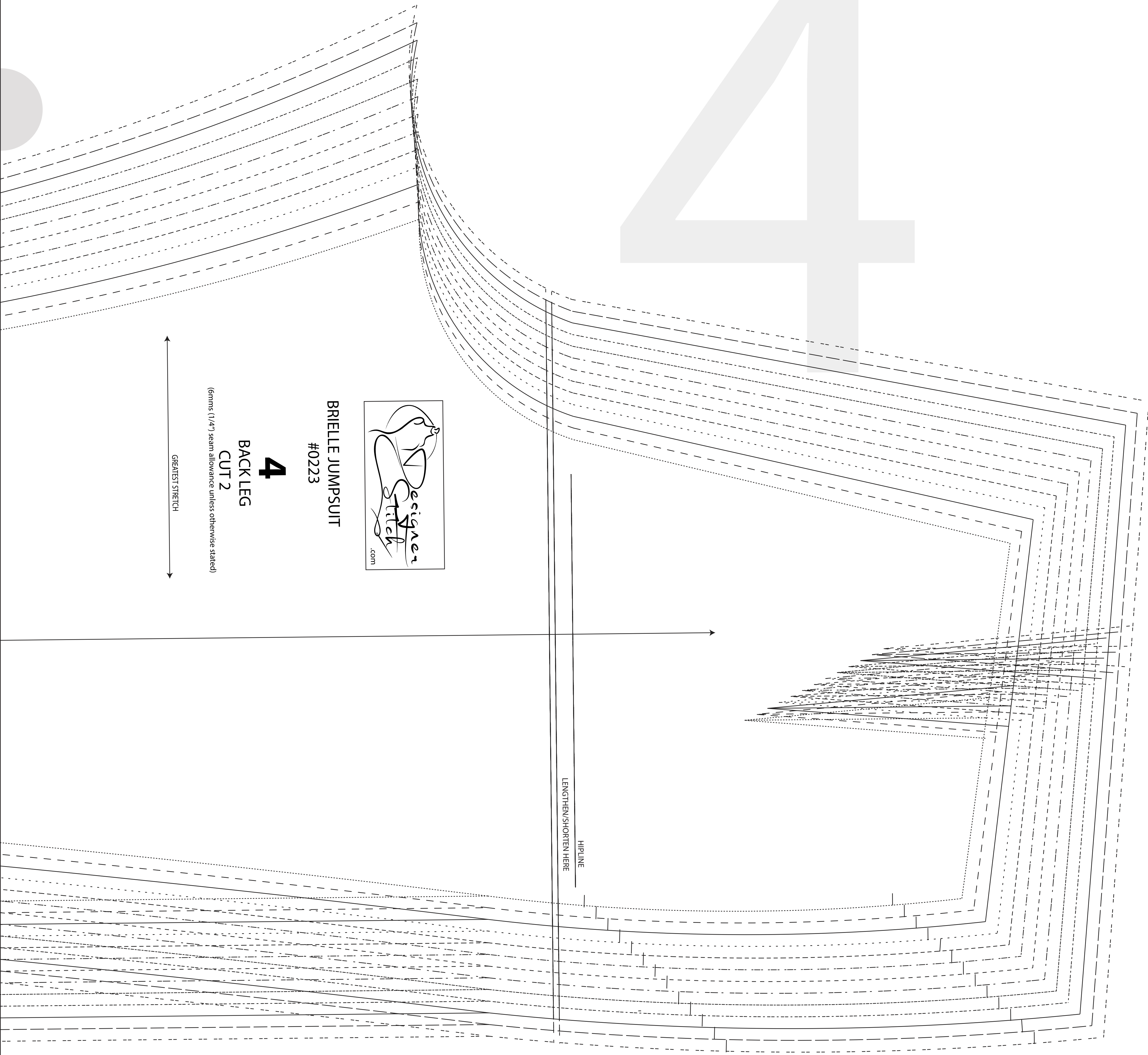
SIZE KEY

- 1 (dash-dot line)
- 2 - - - - - (dashed line)
- 3 _____ (solid line)
- 4 (dash-dot line)
- 5 - - - - - (dashed line)
- 6 - - - - - (dashed line)
- 7 (dash-dot line)
- 8 - - - - - (dashed line)
- 9 (dash-dot line)
- 10 (dash-dot line)
- 11 _____ (solid line)
- 12 - - - - - (dashed line)
- 13 (dash-dot line)



BRIELLE JUMPSUIT

4

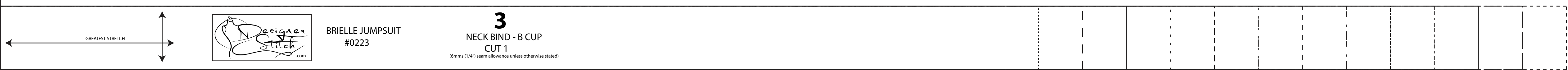
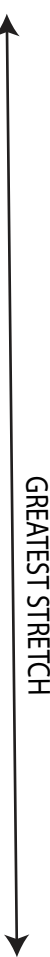


BRIELLE JUMPSUIT
#0223

4

BACK LEG
CUT 2
(allows 1/4" seam allowance unless otherwise stated)

GREATEST STRETCH

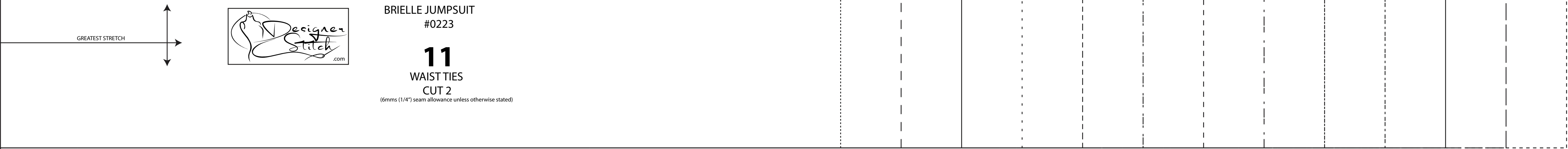


BRIELLE JUMPSUIT
#0223

3

NECK BIND - B CUP
CUT 1
(allows 1/4" seam allowance unless otherwise stated)

GREATEST STRETCH



BRIELLE JUMPSUIT
#0223

11

WAIST TIES
CUT 2
(allows 1/4" seam allowance unless otherwise stated)

GREATEST STRETCH

