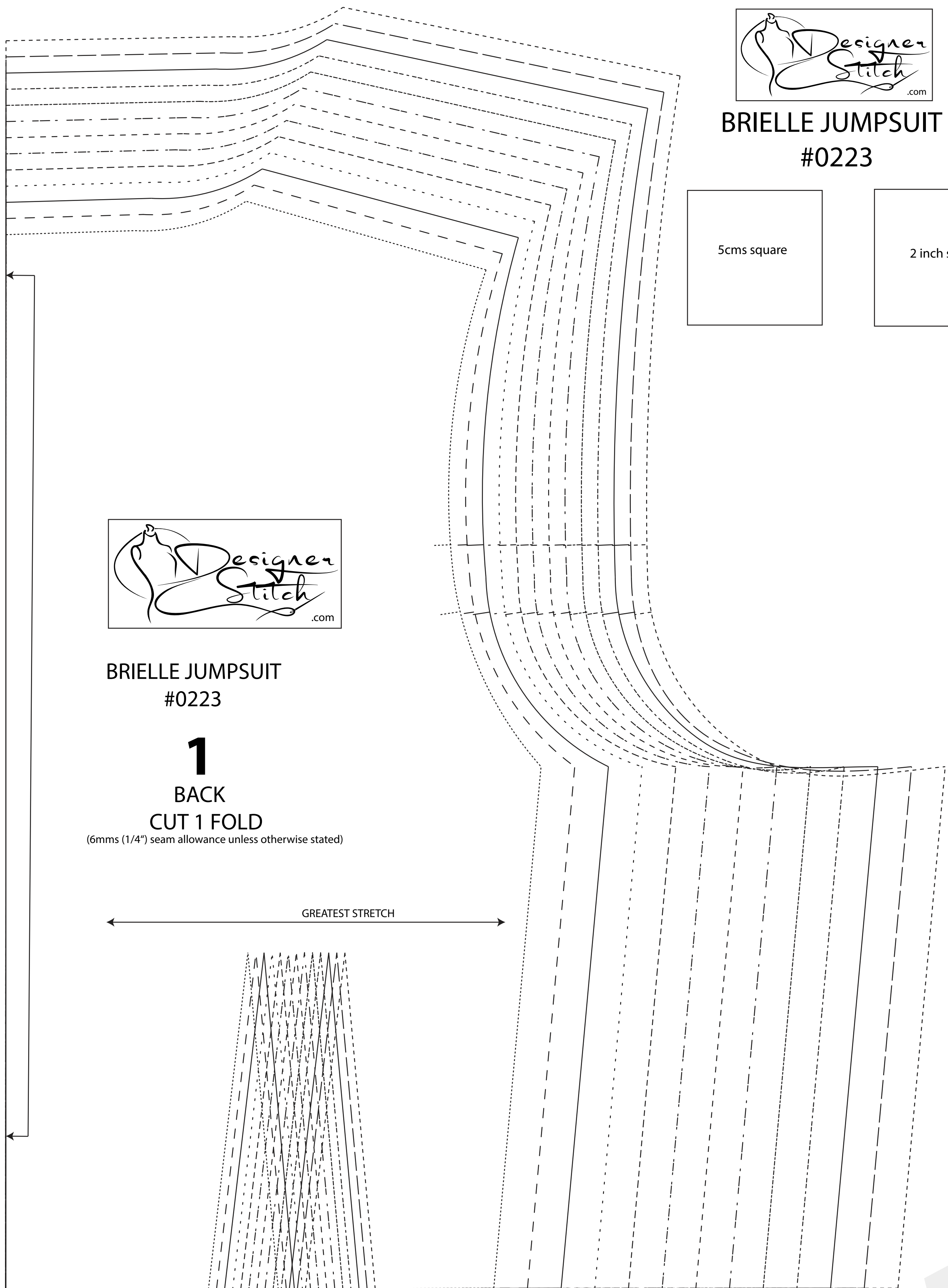
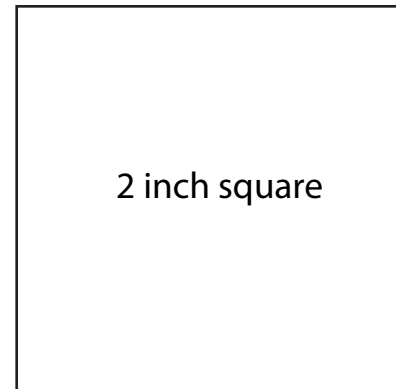
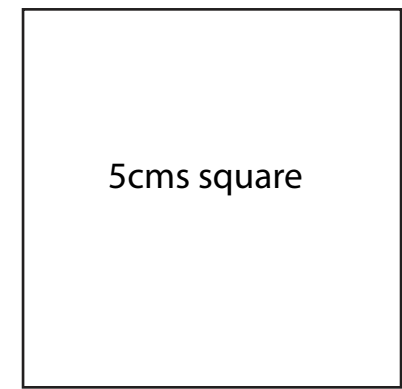




BRIELLE JUMPSUIT #0223



BRIELLE JUMPSUIT #0223

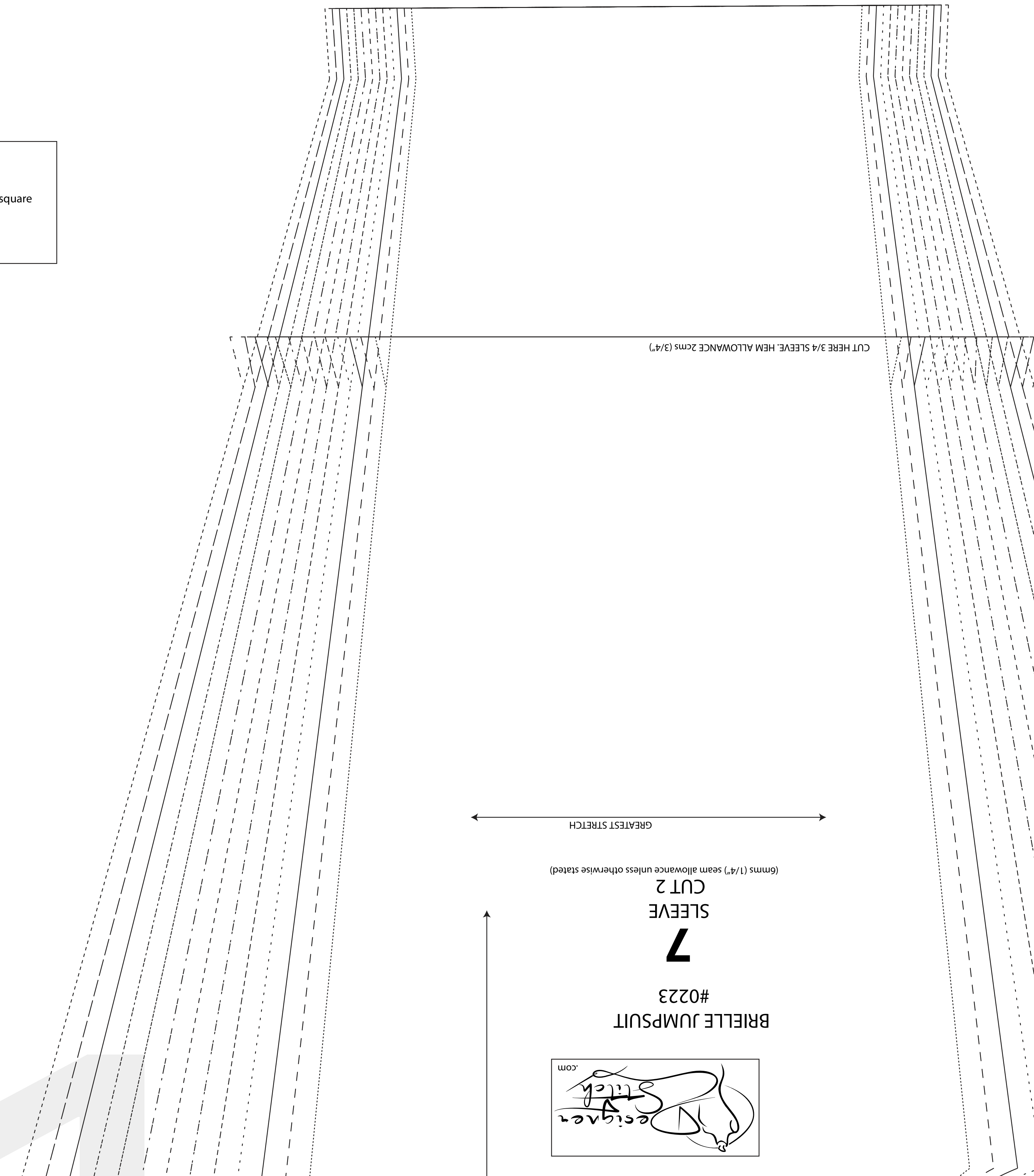
1

BACK
CUT 1 FOLD

(6mms (1/4") seam allowance unless otherwise stated)

GREATEST STRETCH

CUT HERE 3/4 SLEEVE HEM ALLOWANCE 2cms (3/4")



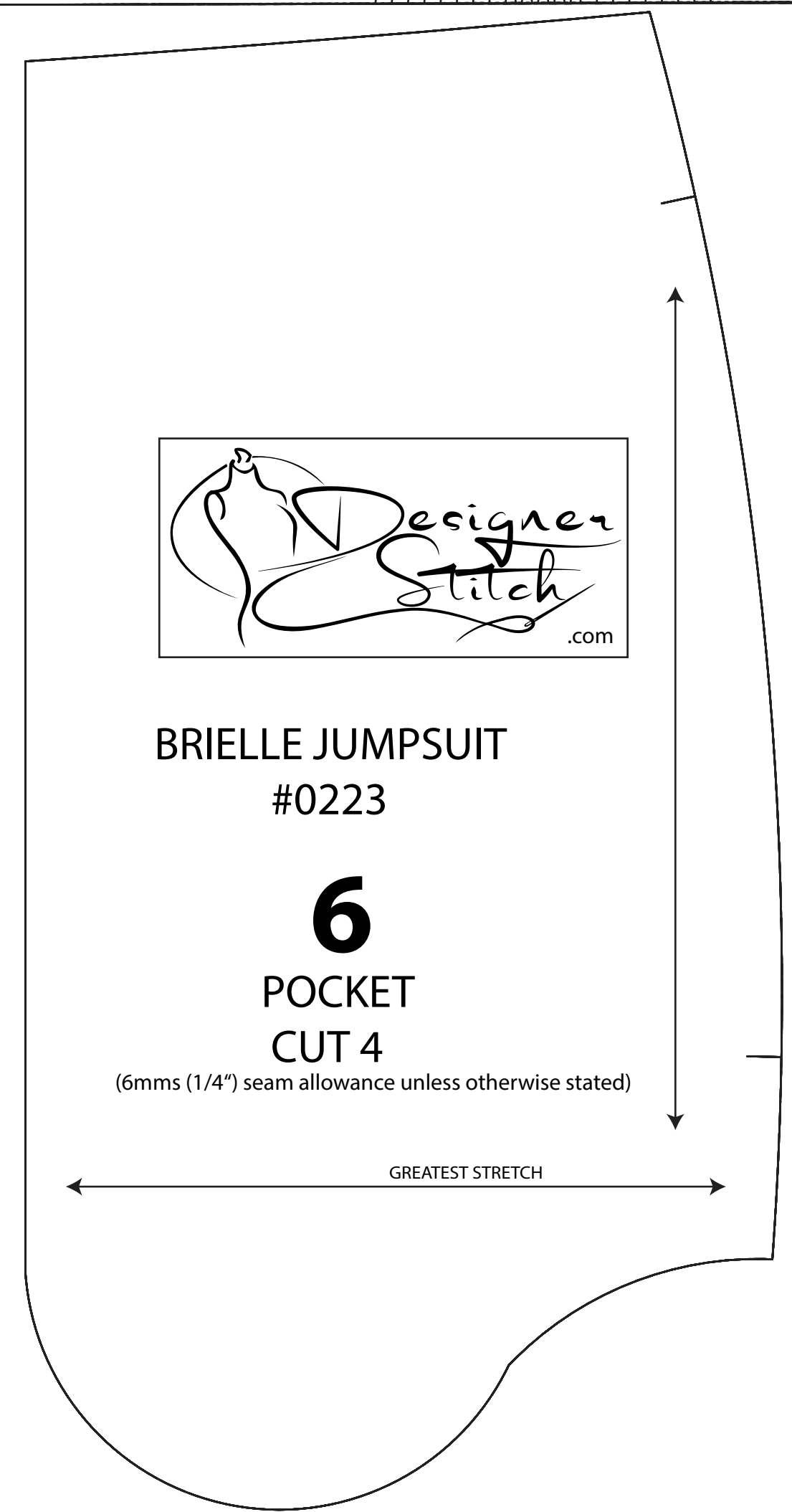
BRIELLE JUMPSUIT #0223

7

SLEEVE
CUT 2

(6mms (1/4") seam allowance unless otherwise stated)

GREATEST STRETCH



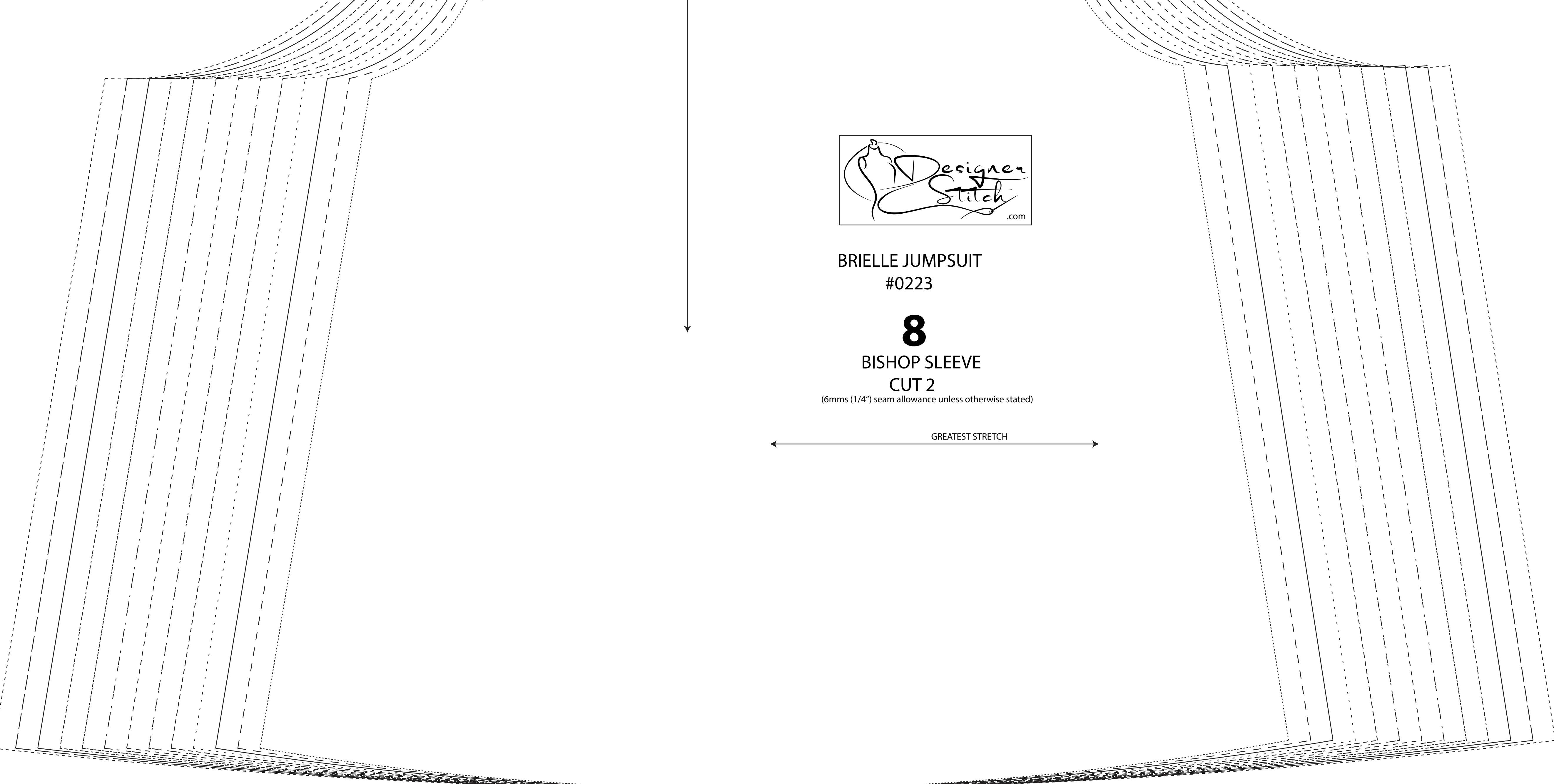
BRIELLE JUMPSUIT #0223

6

POCKET
CUT 4

(6mms (1/4") seam allowance unless otherwise stated)

GREATEST STRETCH



BRIELLE JUMPSUIT #0223

8

BISHOP SLEEVE
CUT 2

(6mms (1/4") seam allowance unless otherwise stated)

GREATEST STRETCH



FRONT C Cup



BRIELLE JUMPSUIT
#0223

9

BISHOP SLEEVE CUFF
CUT 2

(6mms (1/4") seam allowance unless otherwise stated)

FOLDLINE

GREATEST STRETCH



BRIELLE JUMPSUIT
#0223

2

FRONT - C CUP
CUT 2

(6mms (1/4") seam allowance unless otherwise stated)

GREATEST STRETCH



BRIELLE JUMPSUIT
#0223

12

SHORT CIRCLE SLEEVE
CUT 2

(6mms (1/4") seam allowance unless otherwise stated)

GREATEST STRETCH



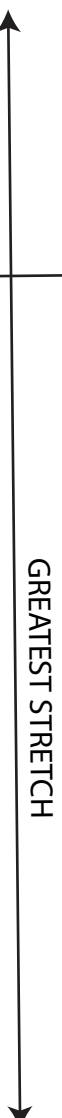
BRIELLE JUMPSUIT
#0223

5

FRONT LEG
CUT 2

(forms 1/4" seam allowance unless otherwise stated)

GREATEST STRETCH

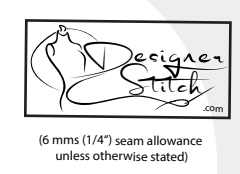


KNEELINE

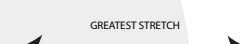
CUT HERE CROPPED LENGTH LEG HEM ALLOWANCE = 3cms (1 1/4")

CUT HERE FULL LENGTH LEG HEM ALLOWANCE = 3cms (1 1/4")

BRIELLE JUMPSUIT
#0223
10
ARMHOLE BIND
CUT 2



GREATEST STRETCH

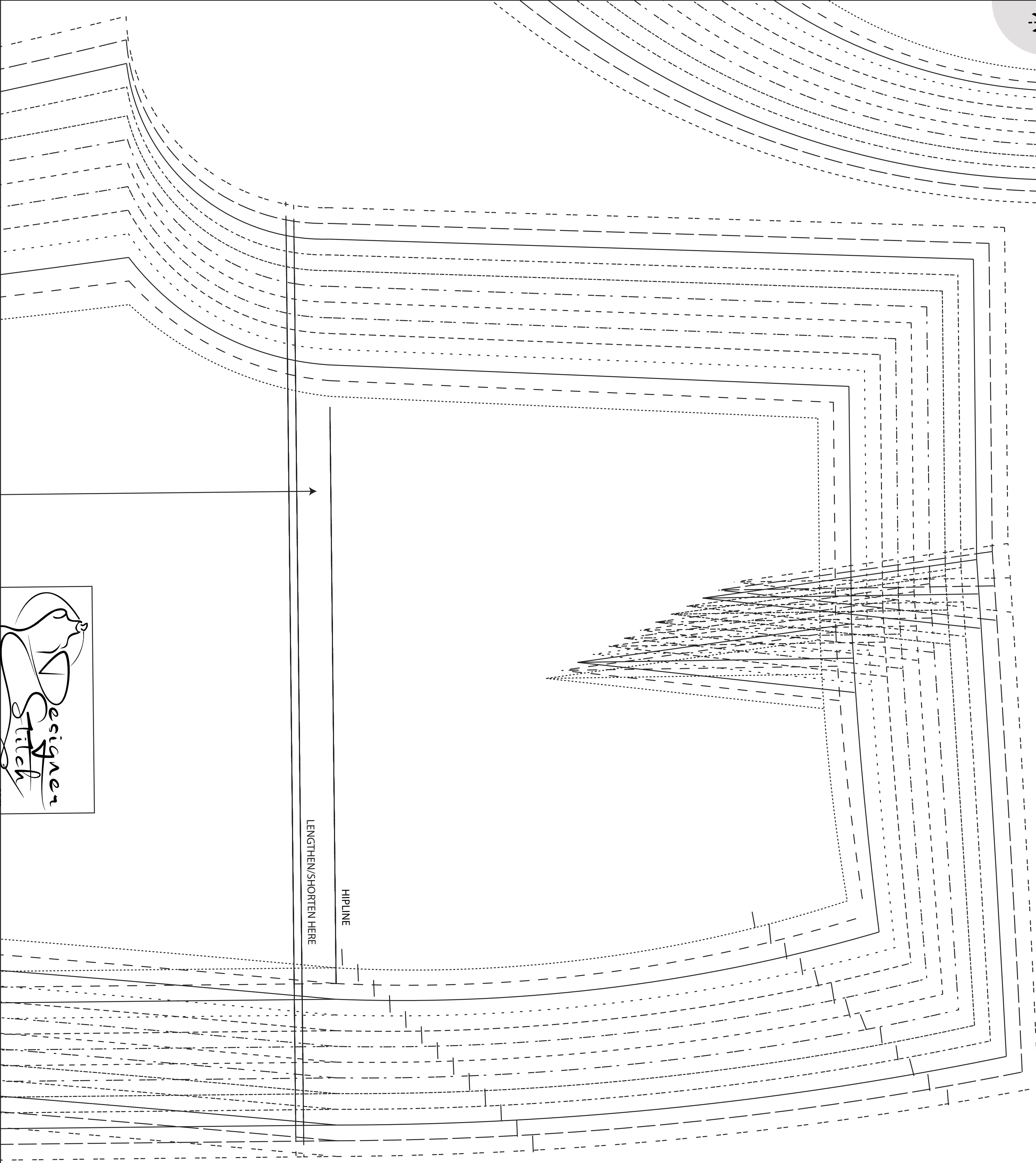
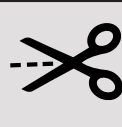


KNEELINE

CUT HERE CROPPED LENGTH LEG HEM ALLOWANCE = 3cms (1 1/4")

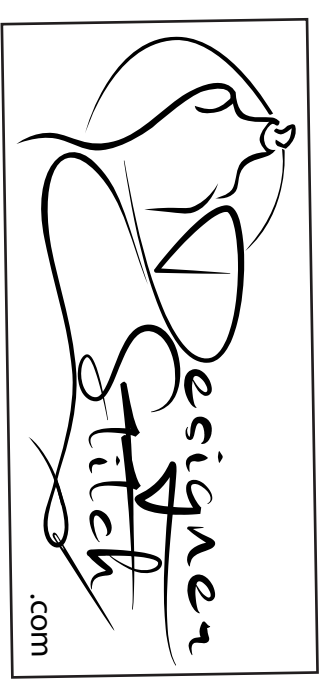
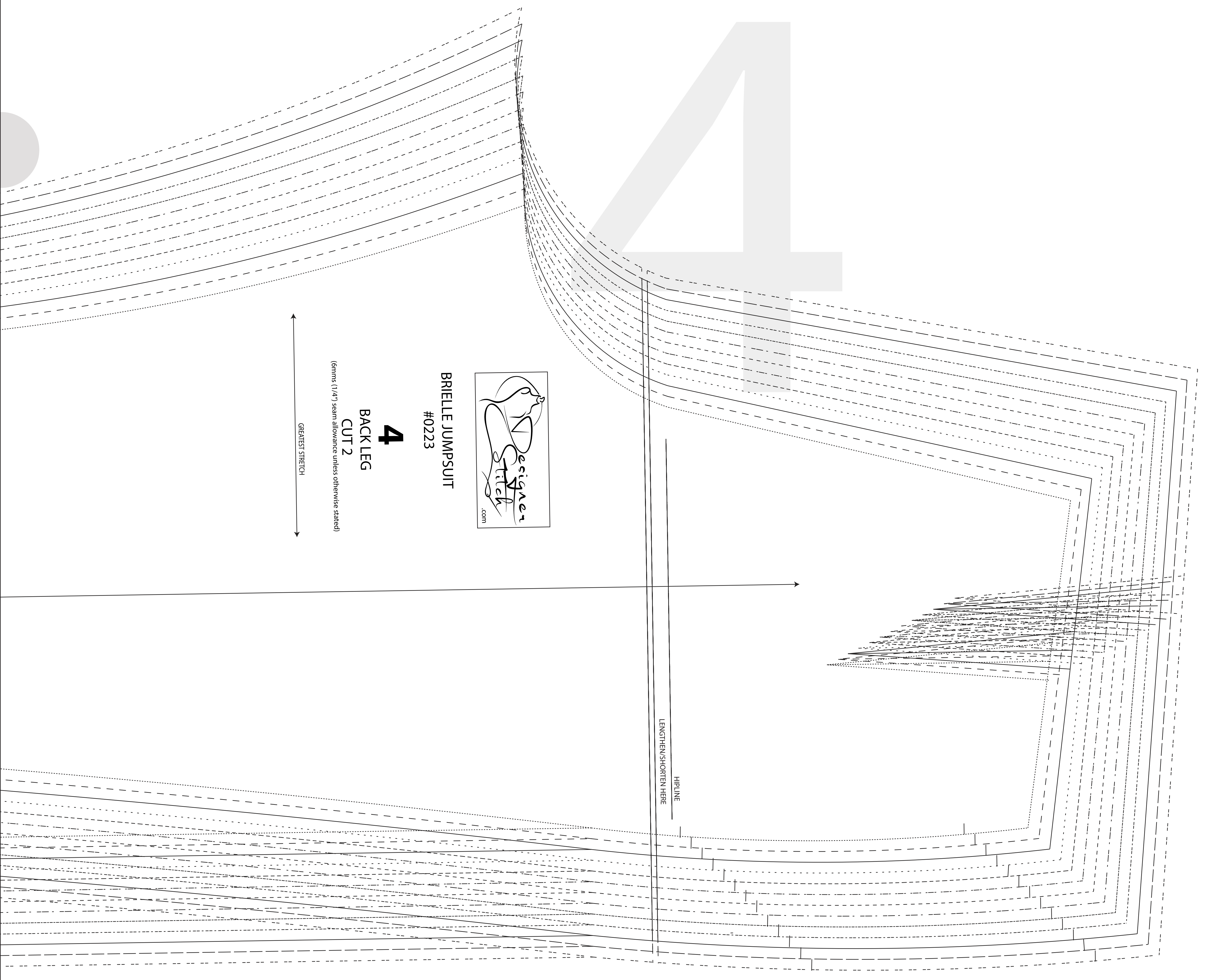
CUT HERE FULL LENGTH LEG HEM ALLOWANCE = 3cms (1 1/4")





SIZE KEY

1
2	-----
3	_____
4
5	-----
6	_____
7
8	-----
9
10	-----
11	_____
12	-----
13



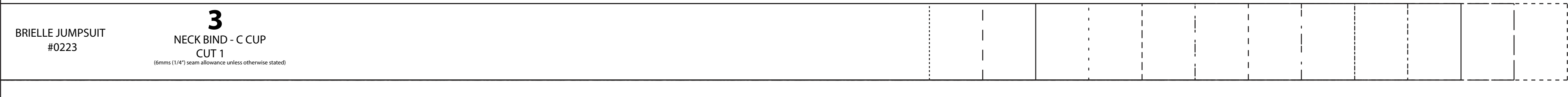
BRIELLE JUMPSUIT
#0223

4

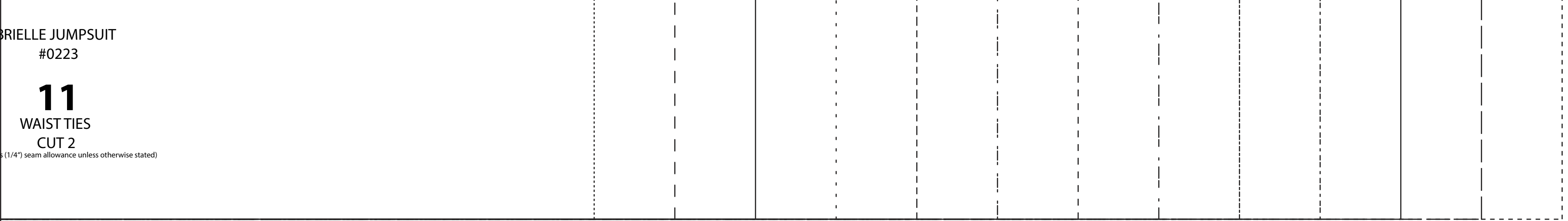
BACK LEG
CUT 2

(6mm (1/4") seam allowance unless otherwise stated)

GREATEST STRETCH



3
NECK BIND - C CUP
CUT 1



11
WAIST TIES
CUT 2

(11/16" seam allowance unless otherwise stated)