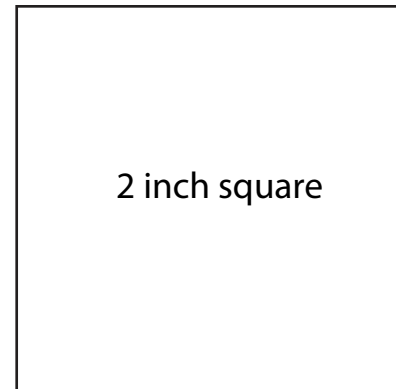
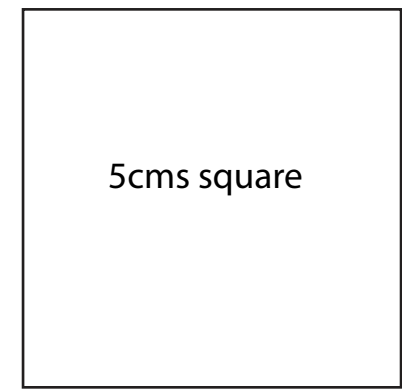




BRIELLE JUMPSUIT/DRESS
#0223



BRIELLE JUMPSUIT
#0223

1

BACK
CUT 1 FOLD

(6mms (1/4") seam allowance unless otherwise stated)

GREATEST STRETCH

CUT HERE 3/4 SLEEVE HEM ALLOWANCE 20ms (3/4")

(6mms (1/4") seam allowance unless otherwise stated)

CUT 2

SLEEVE

7

BRIELLE JUMPSUIT
#0223



BRIELLE JUMPSUIT
#0223

6

POCKET
CUT 4

(6mms (1/4") seam allowance unless otherwise stated)

GREATEST STRETCH



BRIELLE JUMPSUIT
#0223

8

BISHOP SLEEVE
CUT 2

(6mms (1/4") seam allowance unless otherwise stated)

GREATEST STRETCH



FRONT D Cup



BRIELLE JUMPSUIT
#0223

9

BISHOP SLEEVE CUFF
CUT 2

(6mms (1/4") seam allowance unless otherwise stated)

FOLDLINE

GREATEST STRETCH



BRIELLE JUMPSUIT
#0223

2

FRONT - D CUP
CUT 2

(6mms (1/4") seam allowance unless otherwise stated)



BRIELLE JUMPSUIT
#0223

12

SHORT CIRCLE SLEEVE
CUT 2

(6mms (1/4") seam allowance unless otherwise stated)

GREATEST STRETCH

BRIELLE JUMPSUIT
#0223

5
FRONT LEG
CUT 2

(6mm (1/4") seam allowance unless otherwise stated)

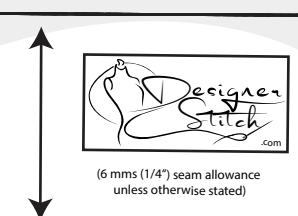
GREATEST STRETCH

KNEELINE

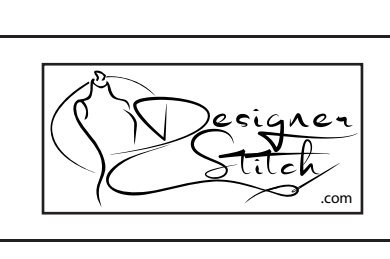
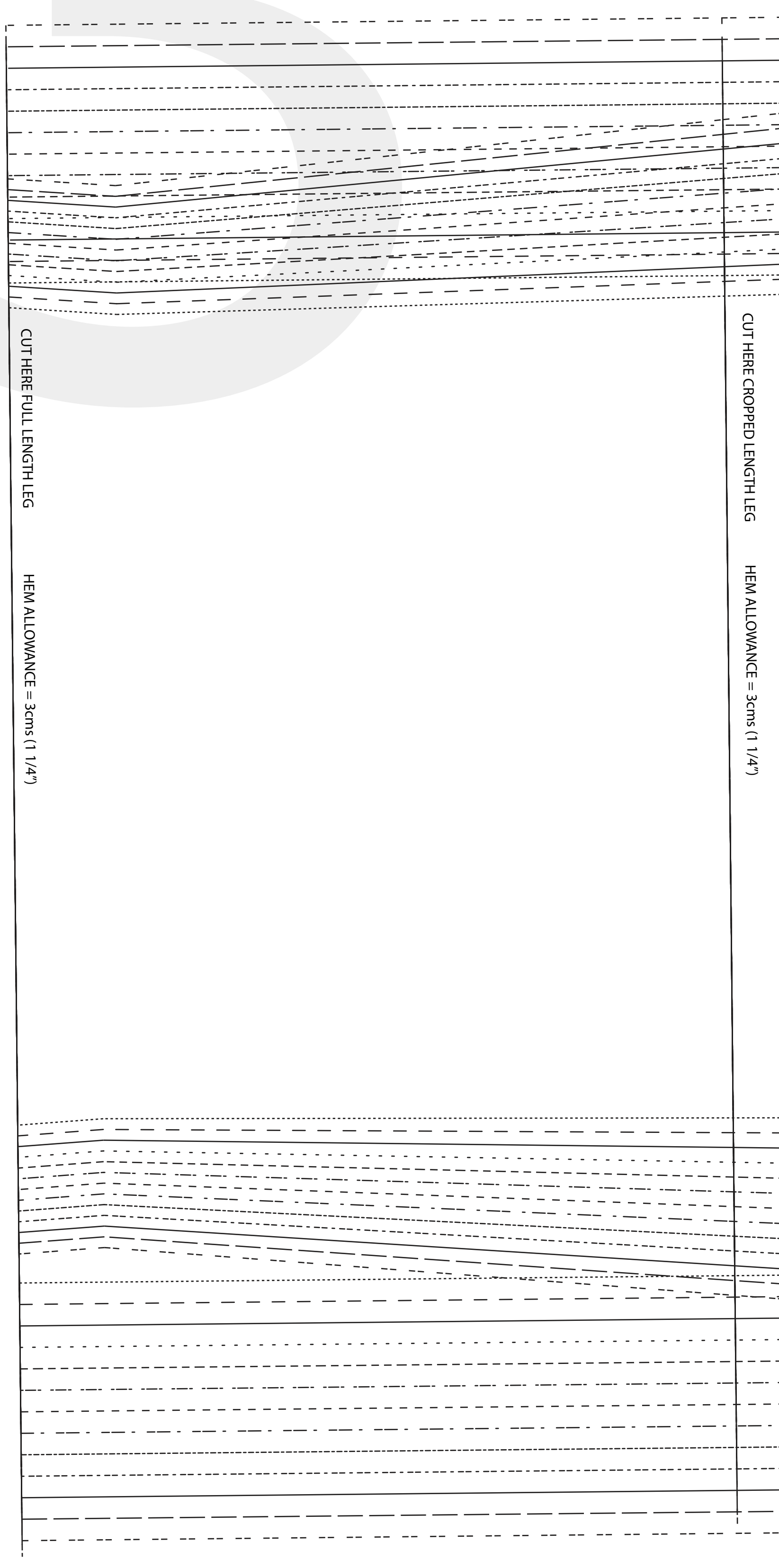
CUT HERE CROPPED LENGTH LEG HEM ALLOWANCE = 3cm (1 1/4")

CUT HERE FULL LENGTH LEG HEM ALLOWANCE = 3cm (1 1/4")

BRIELLE JUMPSUIT
#0223
10
ARMHOLE BIND
CUT 2



6mm (1/4") seam allowance unless otherwise stated



GREATEST STRETCH



GREATEST STRETCH

