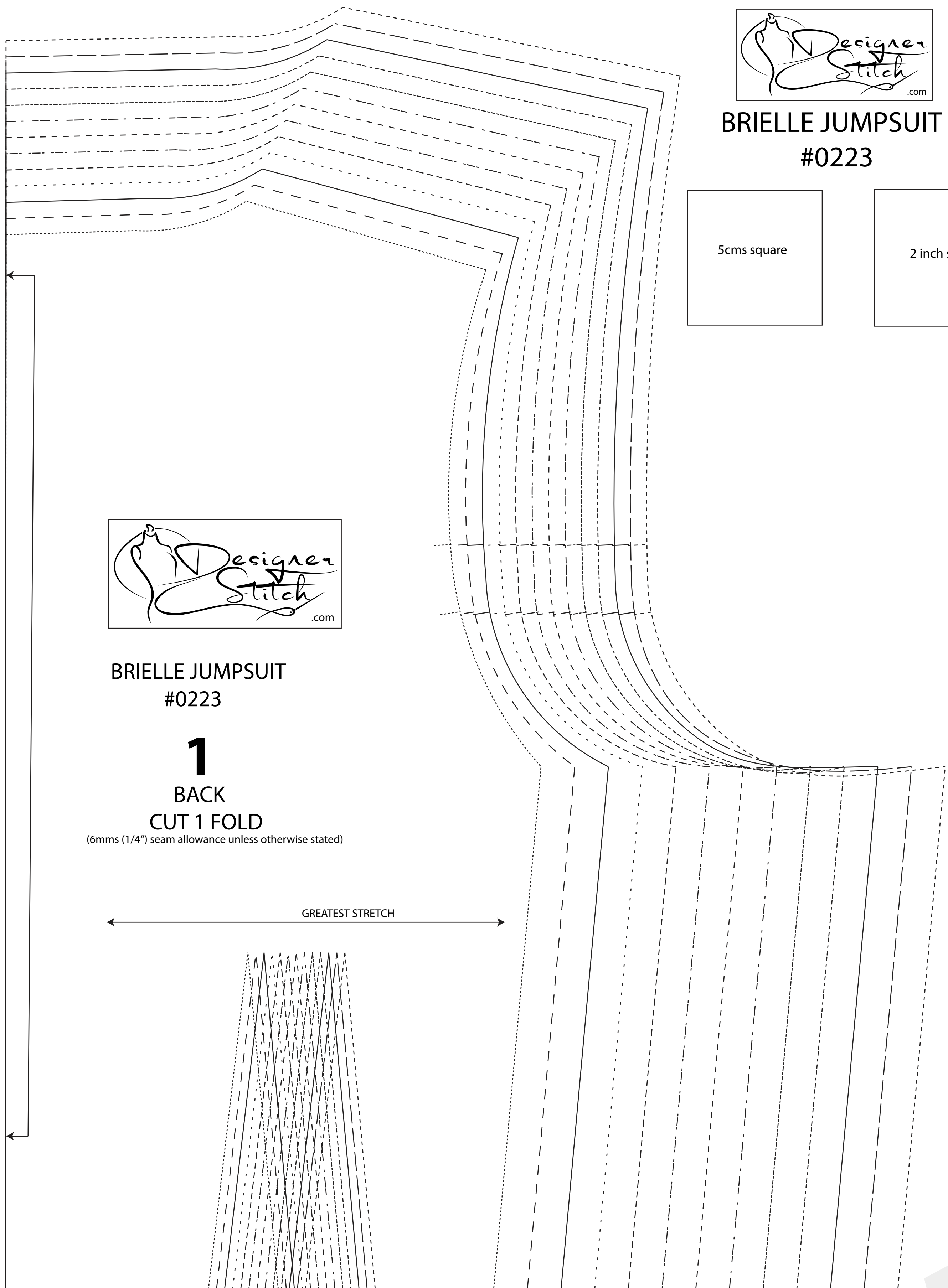
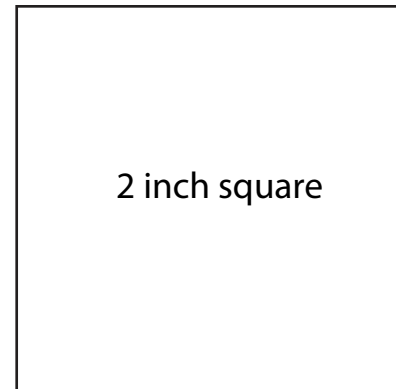
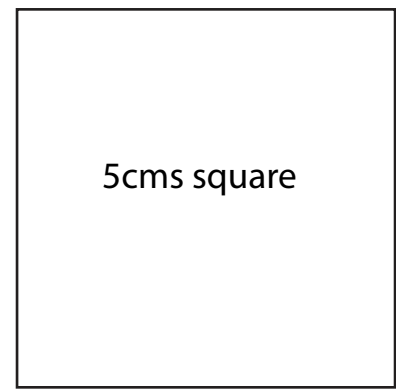




BRIELLE JUMPSUIT #0223



BRIELLE JUMPSUIT #0223

**1**

BACK  
CUT 1 FOLD

(6mms (1/4") seam allowance unless otherwise stated)

GREATEST STRETCH

CUT HERE 3/4 SLEEVE, HEAVY ALLOWANCE 2mms (3/4")

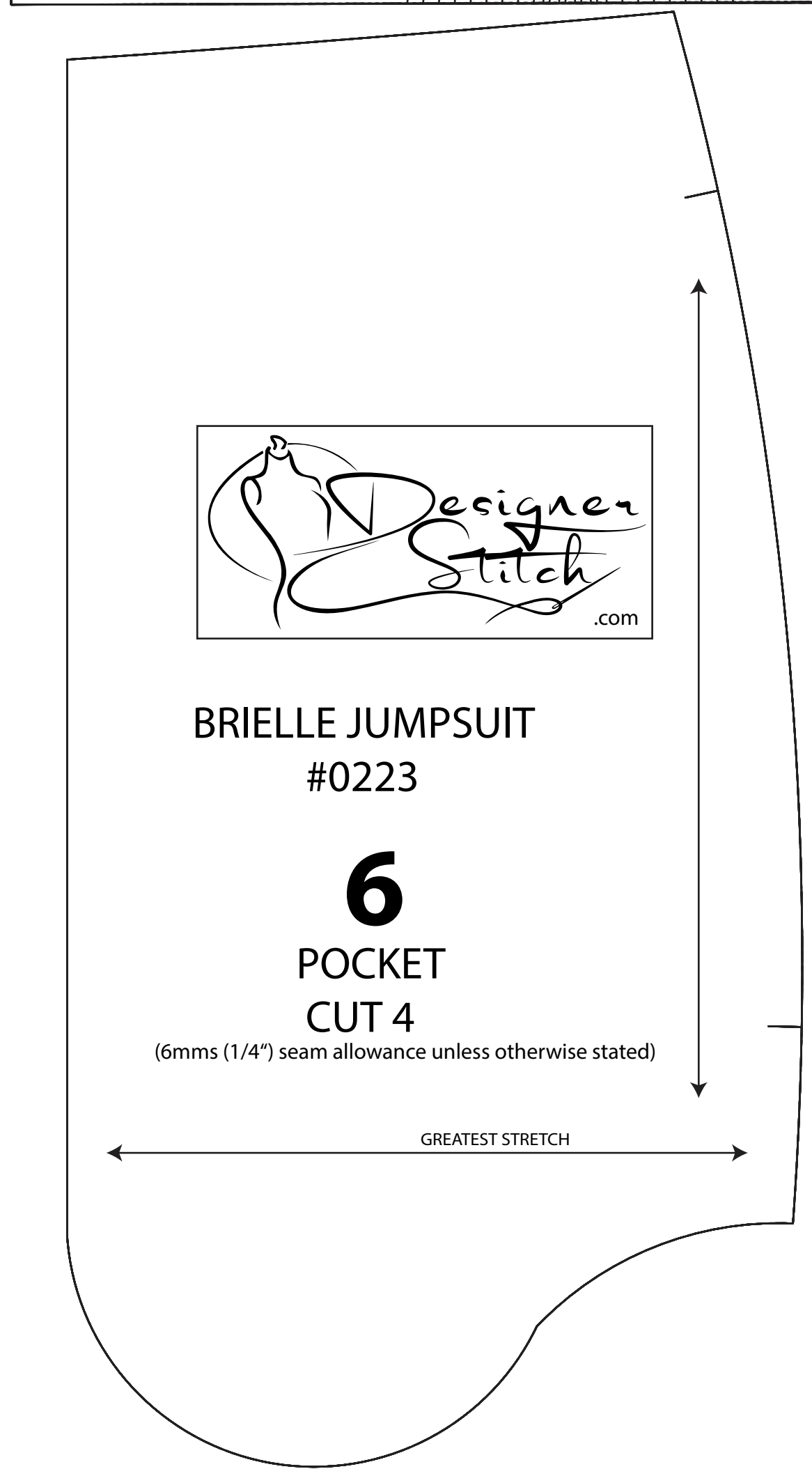
GREATEST STRETCH

(6mms (1/4") seam allowance unless otherwise stated)

CUT 2

**7**

BRIELLE JUMPSUIT #0223



BRIELLE JUMPSUIT #0223

**6**

POCKET  
CUT 4

(6mms (1/4") seam allowance unless otherwise stated)

GREATEST STRETCH



BRIELLE JUMPSUIT #0223

**8**

BISHOP SLEEVE  
CUT 2

(6mms (1/4") seam allowance unless otherwise stated)

GREATEST STRETCH



# FRONT DD Cup



BRIELLE JUMPSUIT  
#0223

**9**

BISHOP SLEEVE CUFF  
CUT 2

(6mms (1/4") seam allowance unless otherwise stated)

FOLDLINE

GREATEST STRETCH



BRIELLE JUMPSUIT  
#0223

**2**

FRONT - DD CUP  
CUT 1 FOLD

(6mms (1/4") seam allowance unless otherwise stated)

GREATEST STRETCH



BRIELLE JUMPSUIT  
#0223

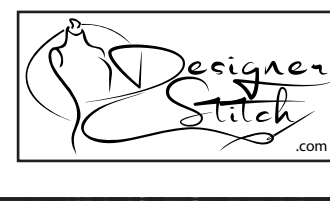
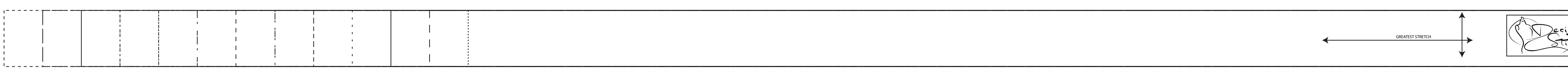
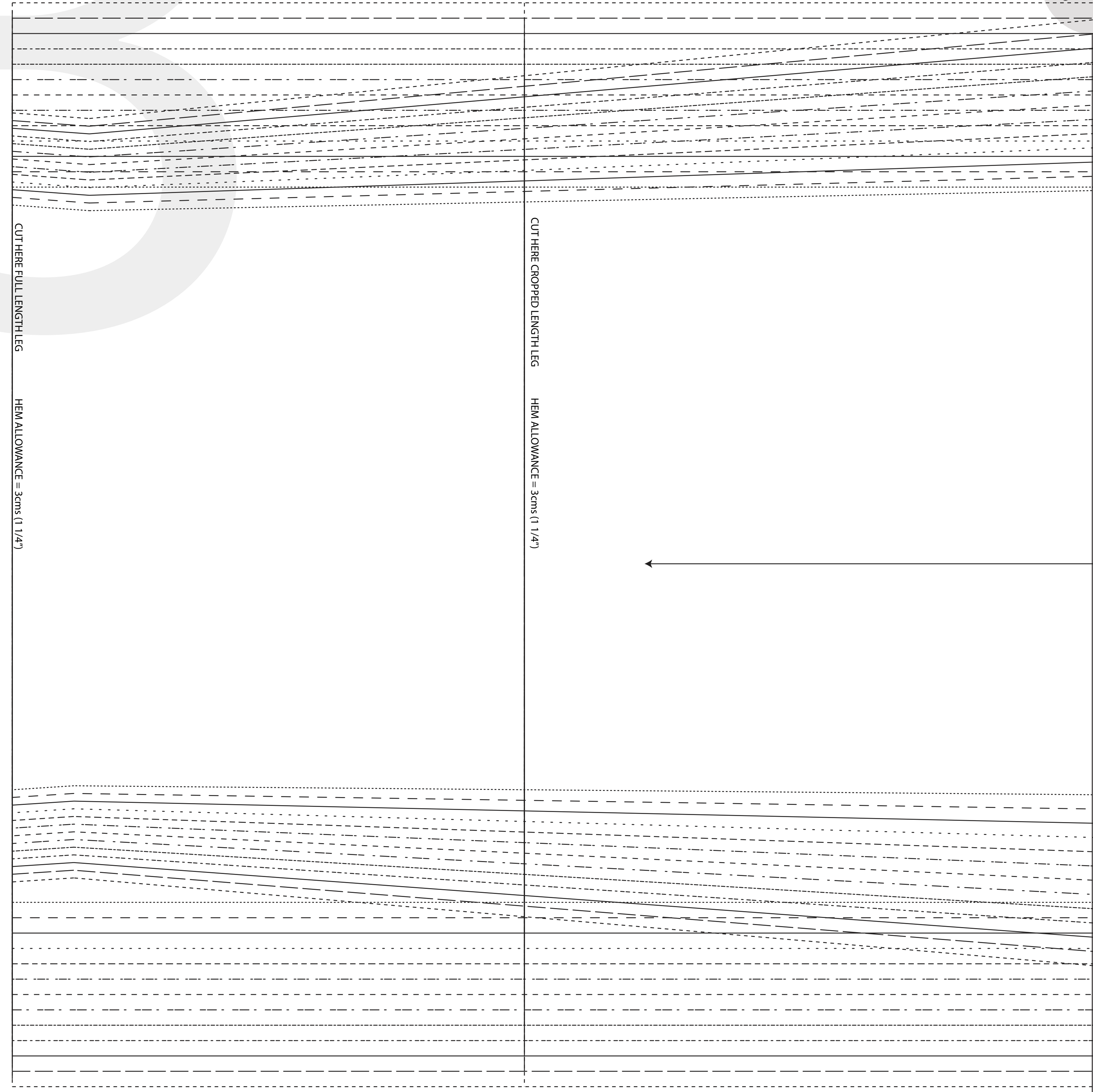
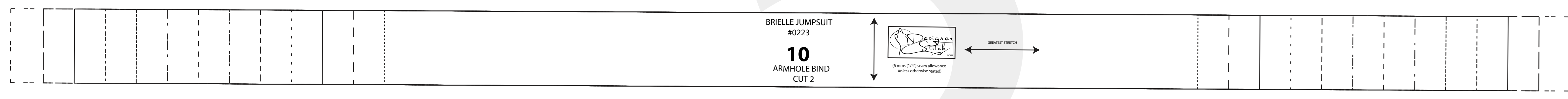
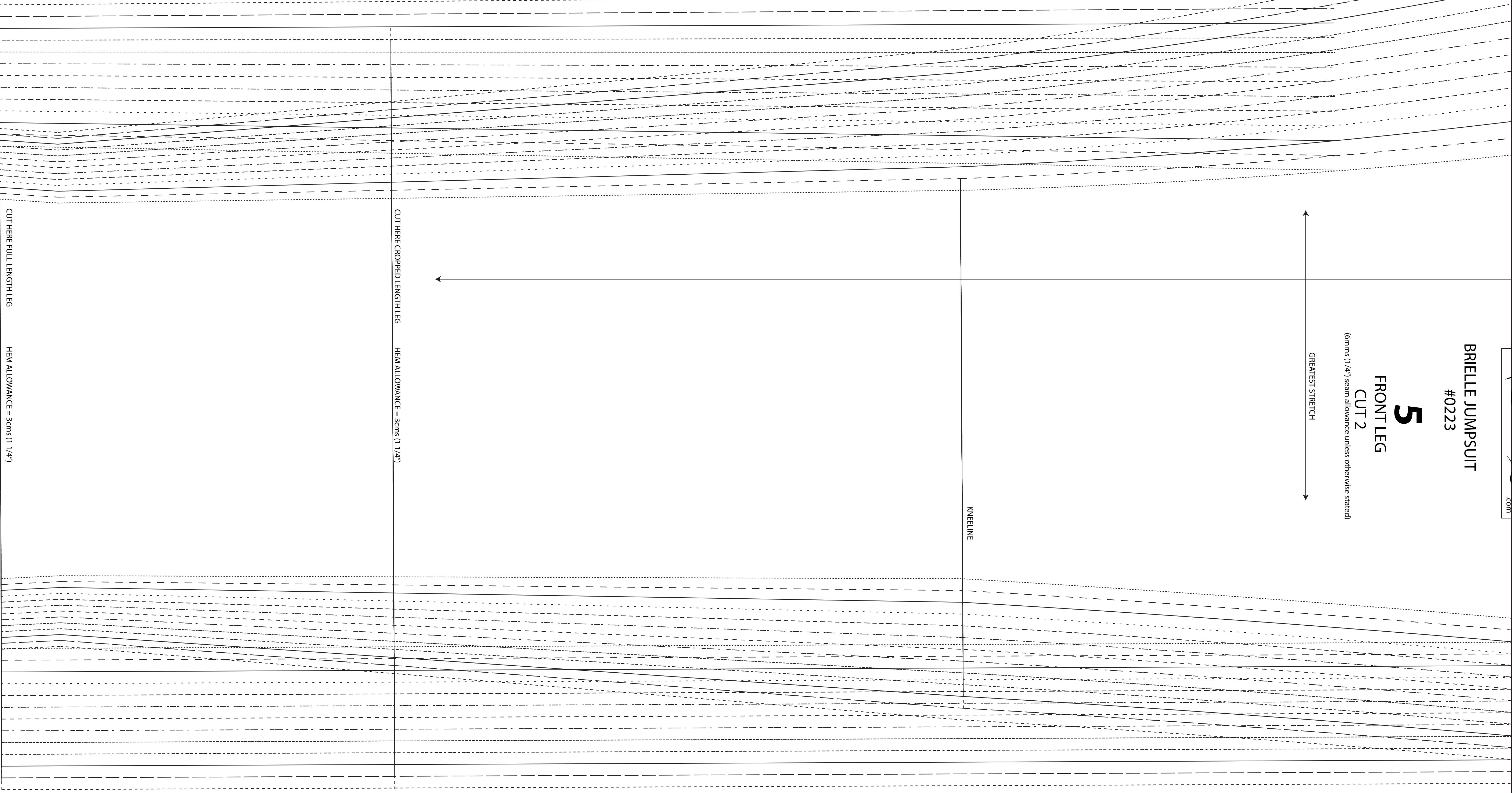
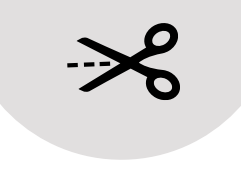
**12**

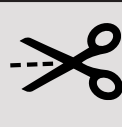
SHORT CIRCLE SLEEVE  
CUT 2

(6mms (1/4") seam allowance unless otherwise stated)

GREATEST STRETCH

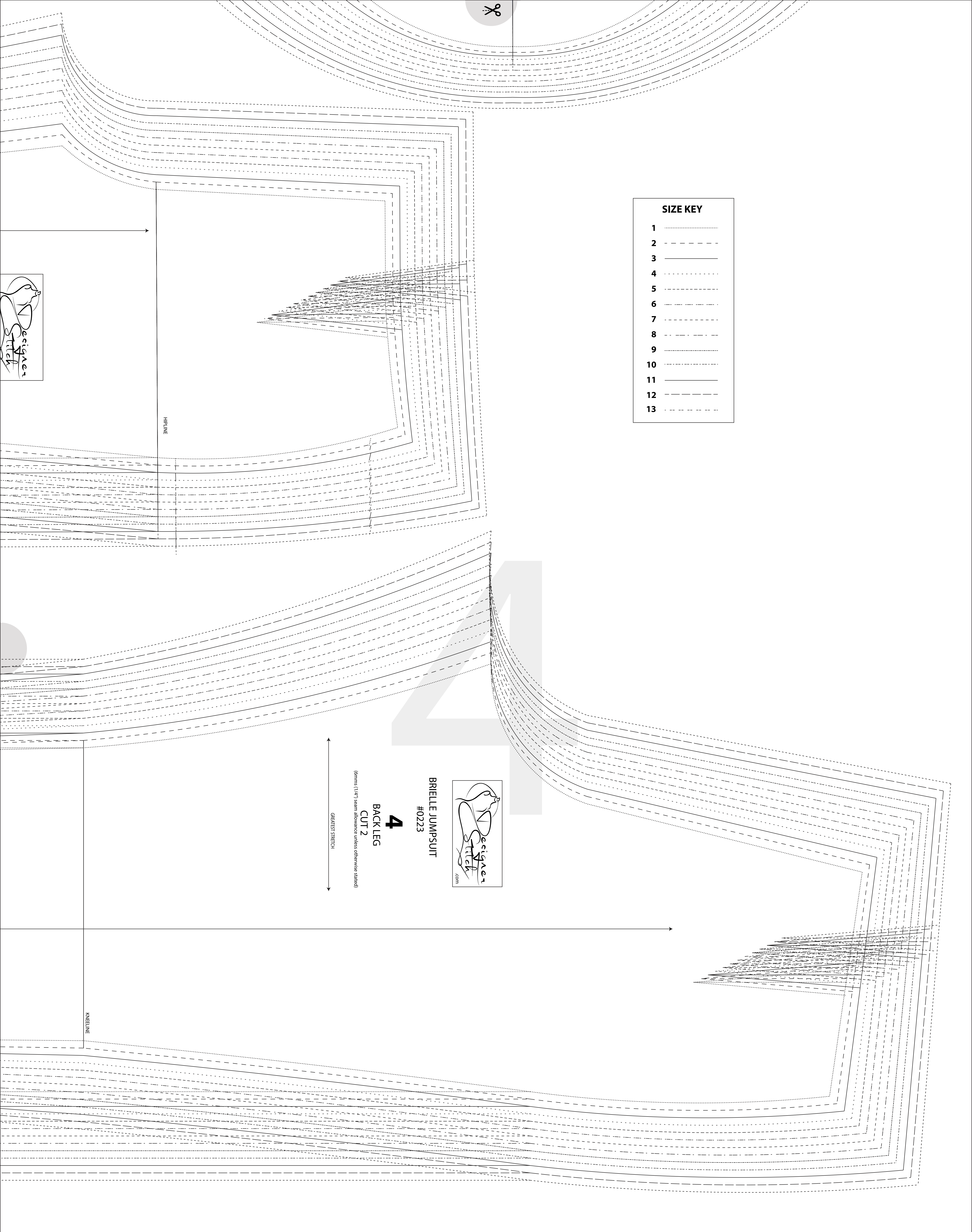
UPPER ARM NOTCH





**SIZE KEY**

- 1 ..... (dotted line)
- 2 - - - - (dashed line)
- 3 \_\_\_\_\_ (solid line)
- 4 ..... (dotted line)
- 5 - - - - (dashed line)
- 6 - - - - (dashed line)
- 7 - - - - (dashed line)
- 8 - - - - (dashed line)
- 9 ..... (dotted line)
- 10 ..... (dotted line)
- 11 \_\_\_\_\_ (solid line)
- 12 - - - - (dashed line)
- 13 - - - - (dashed line)



BRIELLE JUMPSUIT  
#0223

**4**

BACK LEG  
CUT 2

(girls (1/4") seam allowance unless otherwise stated)

GREATEST STRETCH

**3**

NECK BIND - DD CUP  
CUT 1

(girls (1/4") seam allowance unless otherwise stated)

BRIELLE JUMPSUIT  
#0223

**11**

WAIST TIES  
CUT 2

(1/4" seam allowance unless otherwise stated)

