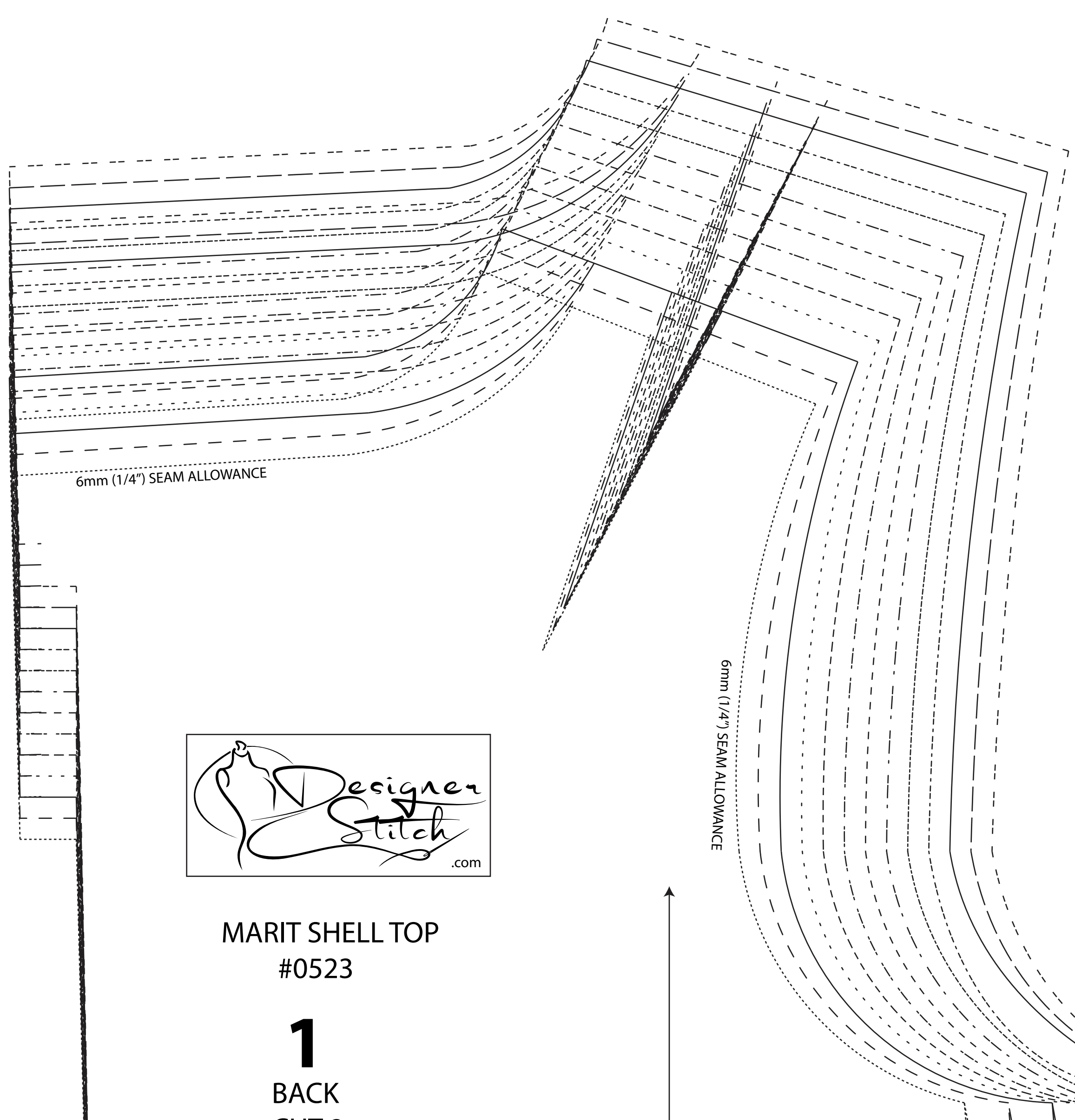
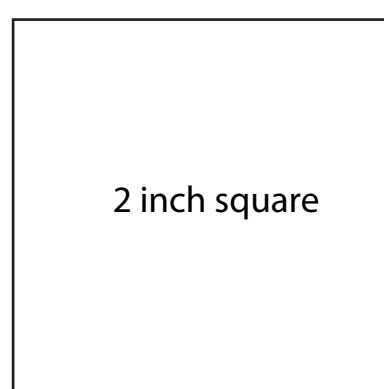
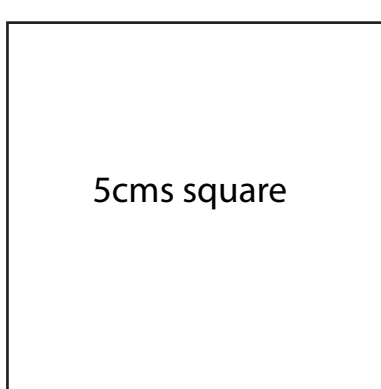




MARIT SHELL TOP
#0523



MARIT SHELL TOP
#0523

1

BACK
CUT 2

(1.5 cms (5/8") seam allowance unless otherwise stated)

6mm (1/4") SEAM ALLOWANCE

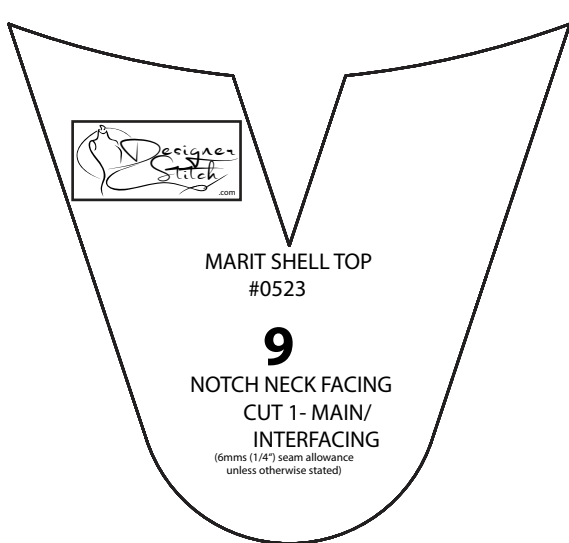
2 cms (3/4") HEM ALLOWANCE

2 cms (3/4") HEM ALLOWANCE

2 cms (3/4") HEM ALLOWANCE

WAISTLINE

LENGTHEN/SHORTEN HERE



MARIT SHELL TOP
#0523
9
NOTCH NECK FACING
CUT 1 - MAIN
INTERFACING

MARIT SHELL TOP
#0523
8
ARMHOLE BAND
CUT 2



MARIT SHELL TOP
#0523
7
HIGH NECK BAND
CUT 1



MARIT SHELL TOP
#0523
6
SCOOP NECK BAND
CUT 1



MARIT SHELL TOP
#0523

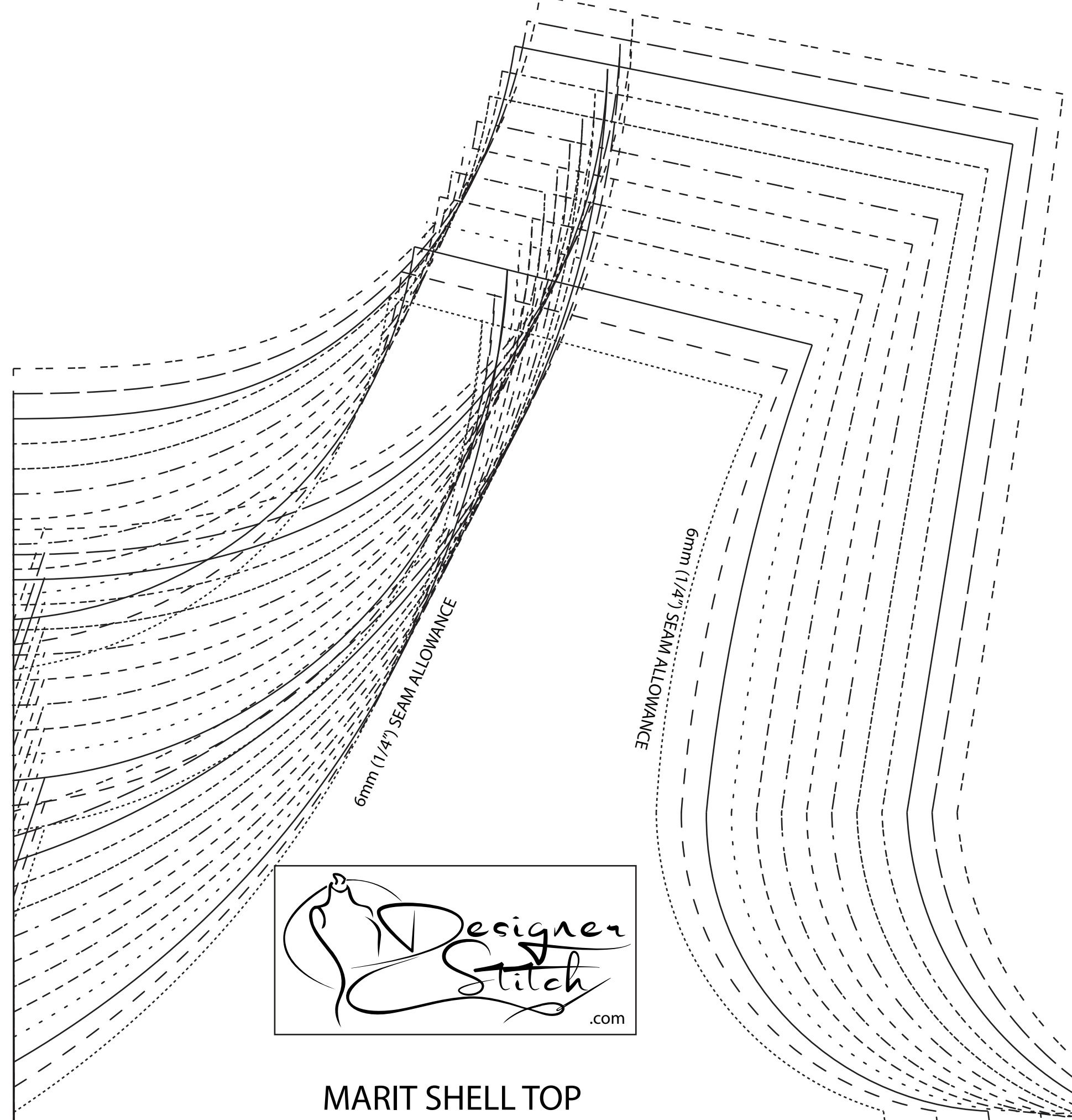
4
RUFFLED CAP SLEEVE
CUT 2 - (or 4)



© 2014 Designer Stitch. All rights reserved. Pattern for personal use only.



A Cup

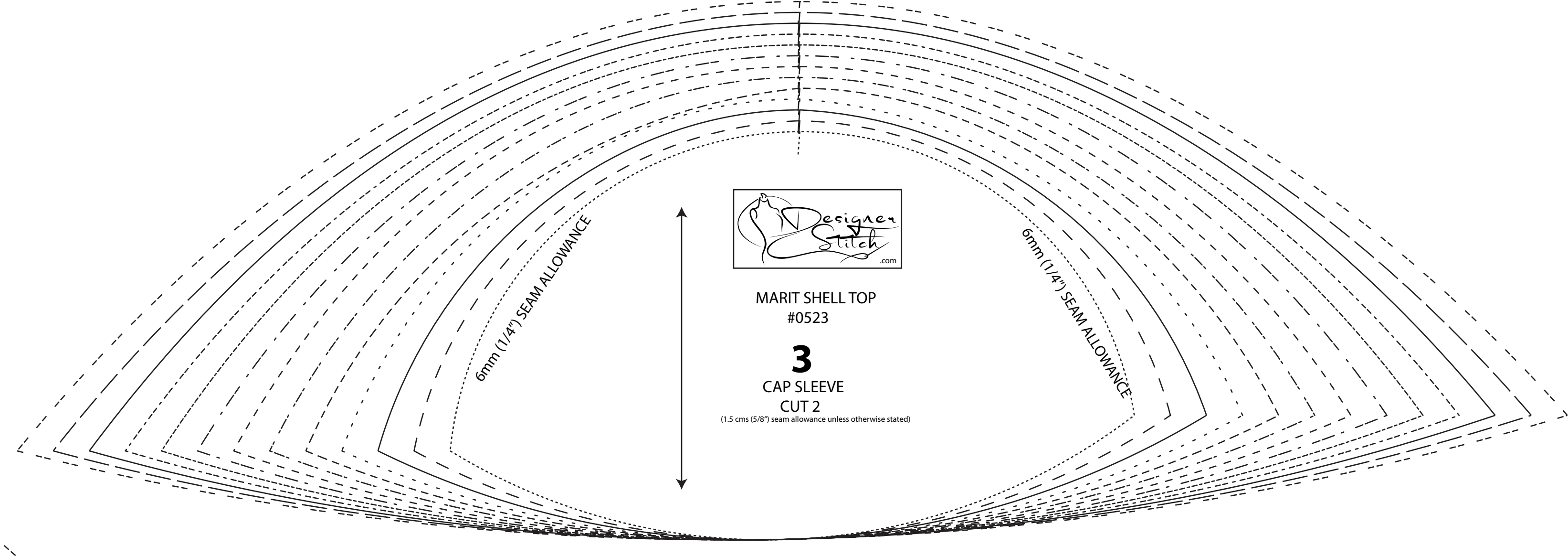
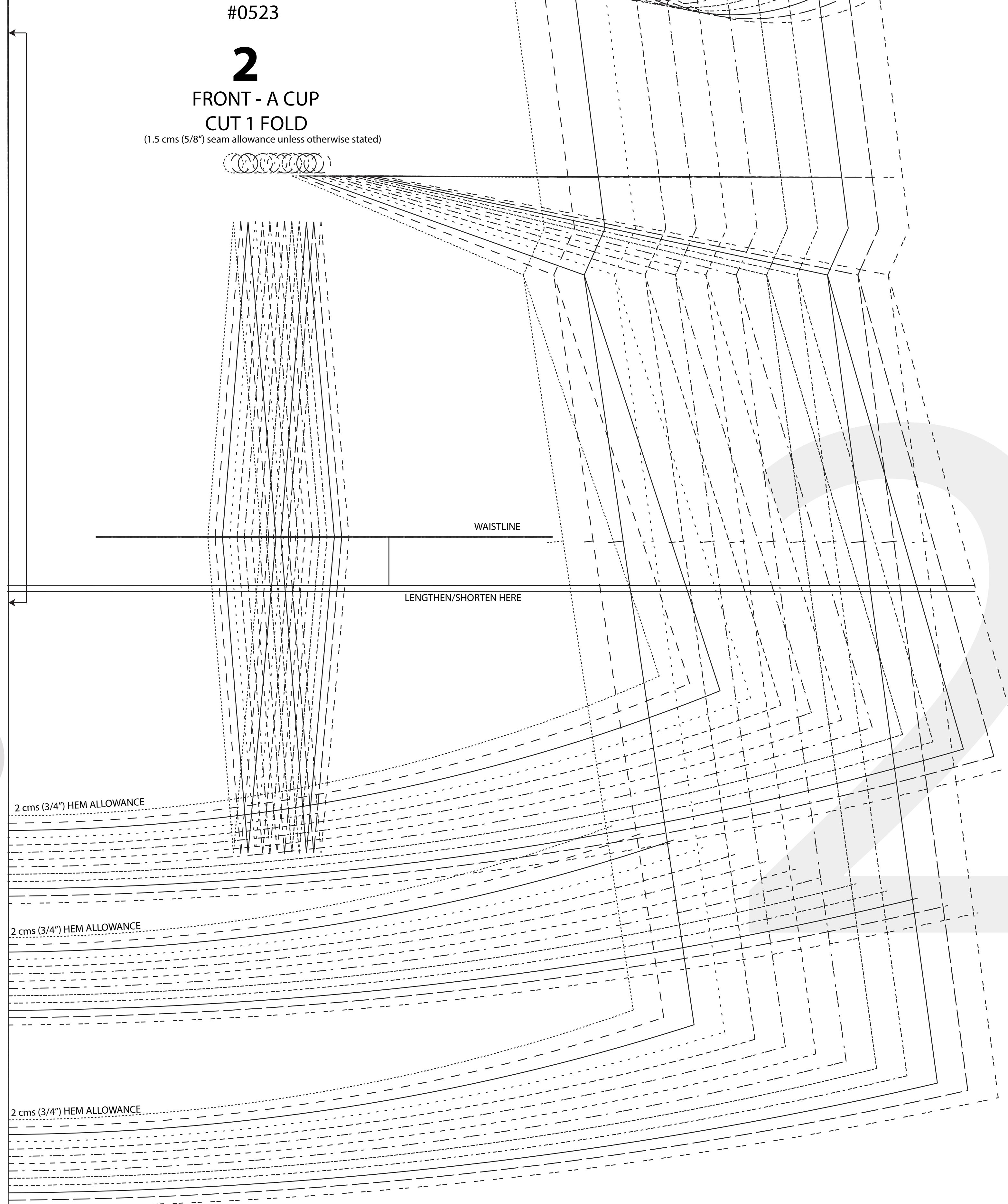


MARIT SHELL TOP
#0523

2

FRONT - A CUP
CUT 1 FOLD

(1.5 cms (5/8") seam allowance unless otherwise stated)



MARIT SHELL TOP
#0523

3

CAP SLEEVE
CUT 2

(1.5 cms (5/8") seam allowance unless otherwise stated)

