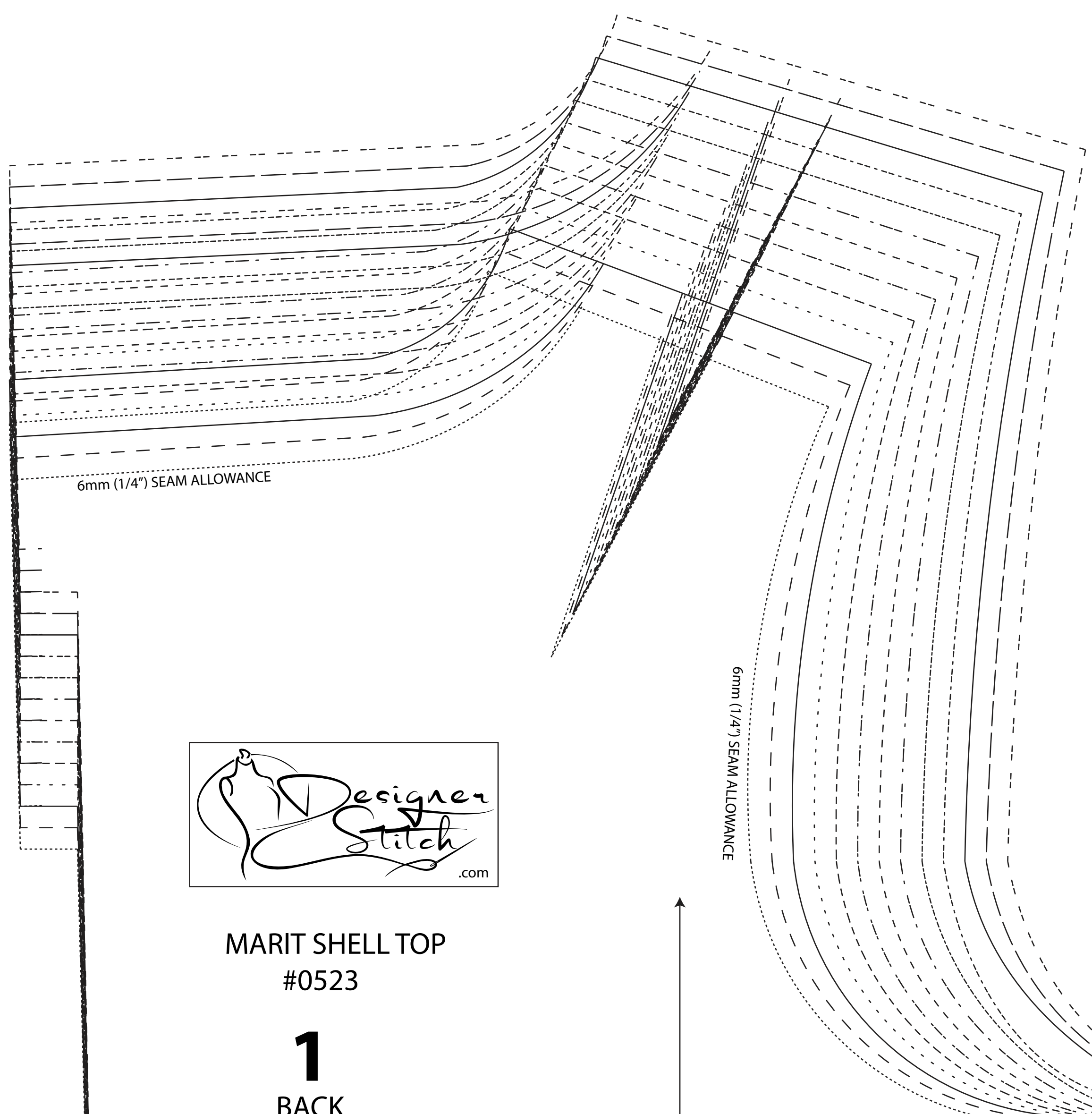
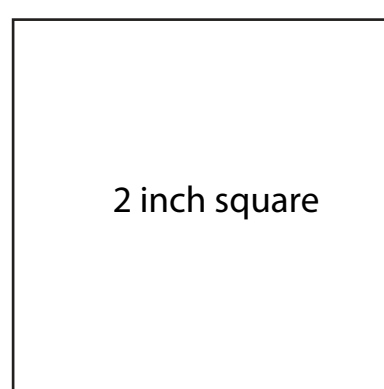
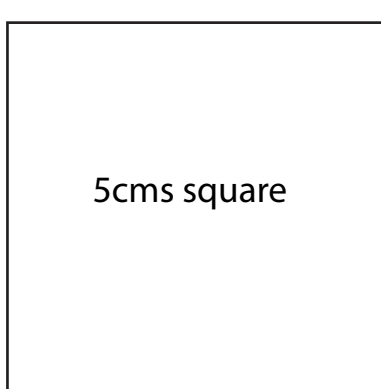




MARIT SHELL TOP
#0523

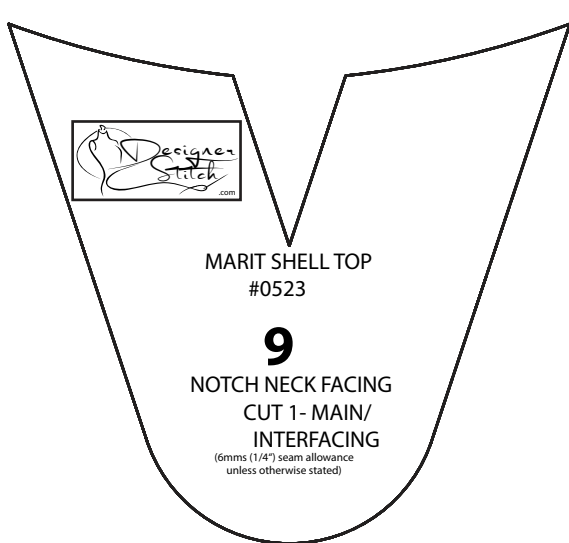


MARIT SHELL TOP
#0523

1

BACK
CUT 2

(1.5 cms (5/8") seam allowance unless otherwise stated)



MARIT SHELL TOP
#0523
9
NOTCH NECK FACING
CUT 1 - MAIN
INTERFACING



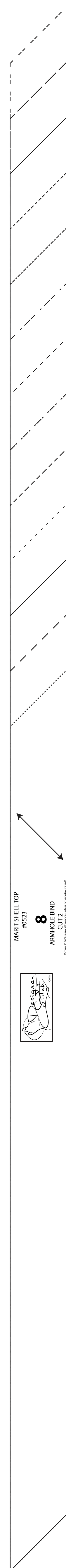
WAISTLINE

LENGTHEN/SHORTEN HERE

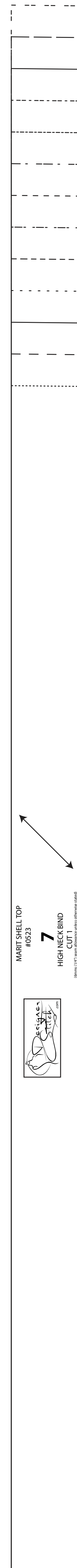
2 cms (3/4") HEM ALLOWANCE

2 cms (3/4") HEM ALLOWANCE

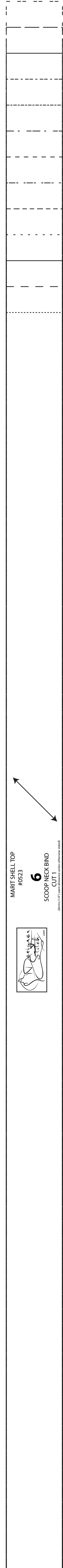
2 cms (3/4") HEM ALLOWANCE



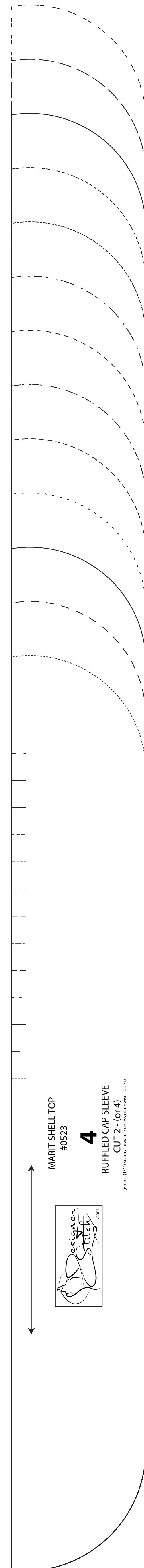
MARIT SHELL TOP
#0523
8
ARMHOLE BINDING
CUT 2



MARIT SHELL TOP
#0523
7
HIGH NECK BAND
CUT 1



MARIT SHELL TOP
#0523
6
SCOOP NECK BAND
CUT 1

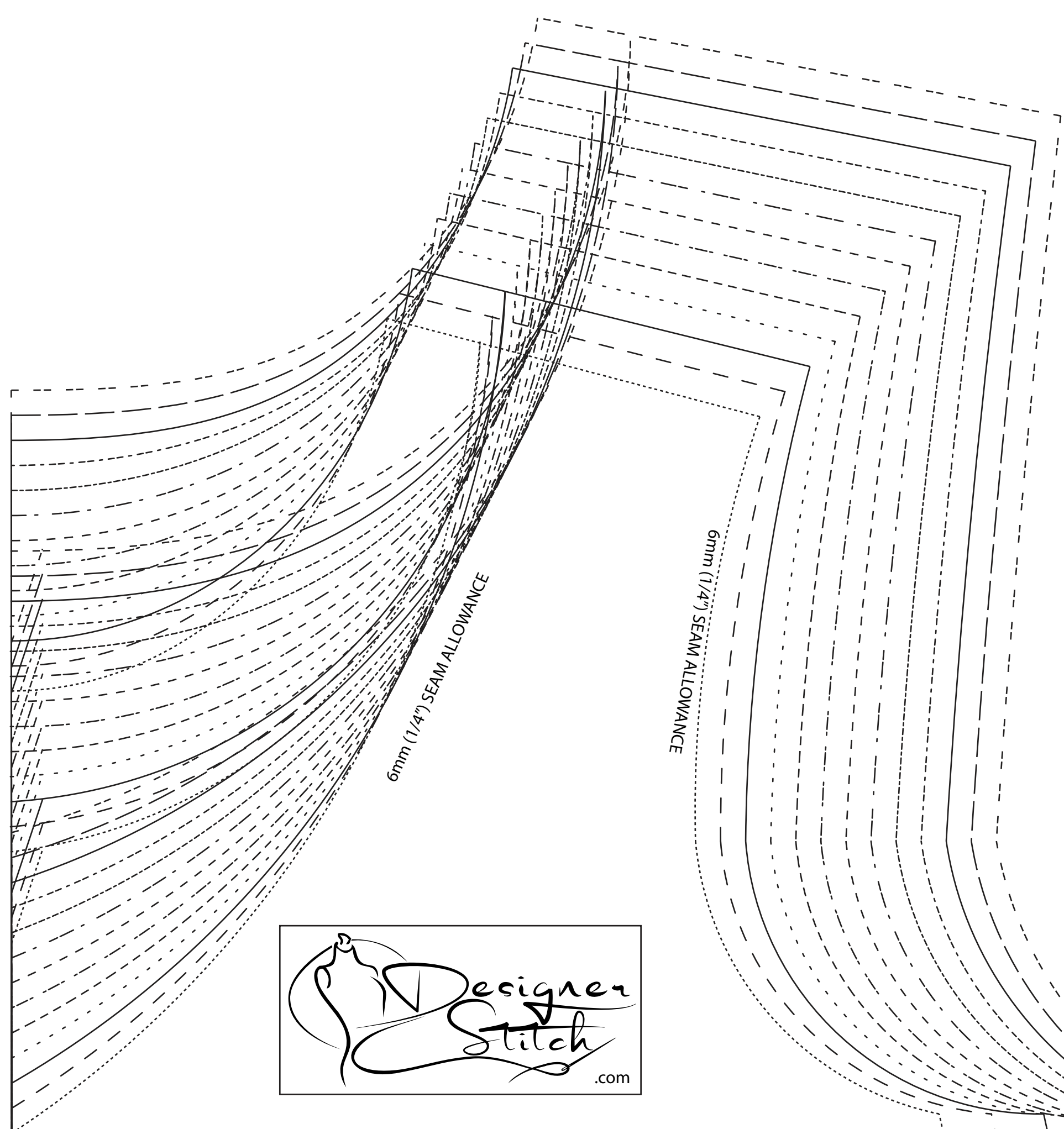


MARIT SHELL TOP
#0523
4
RUFFLED CAP SLEEVE
CUT 2 - (OF 4)



(www.designer-stitch.com)

C Cup

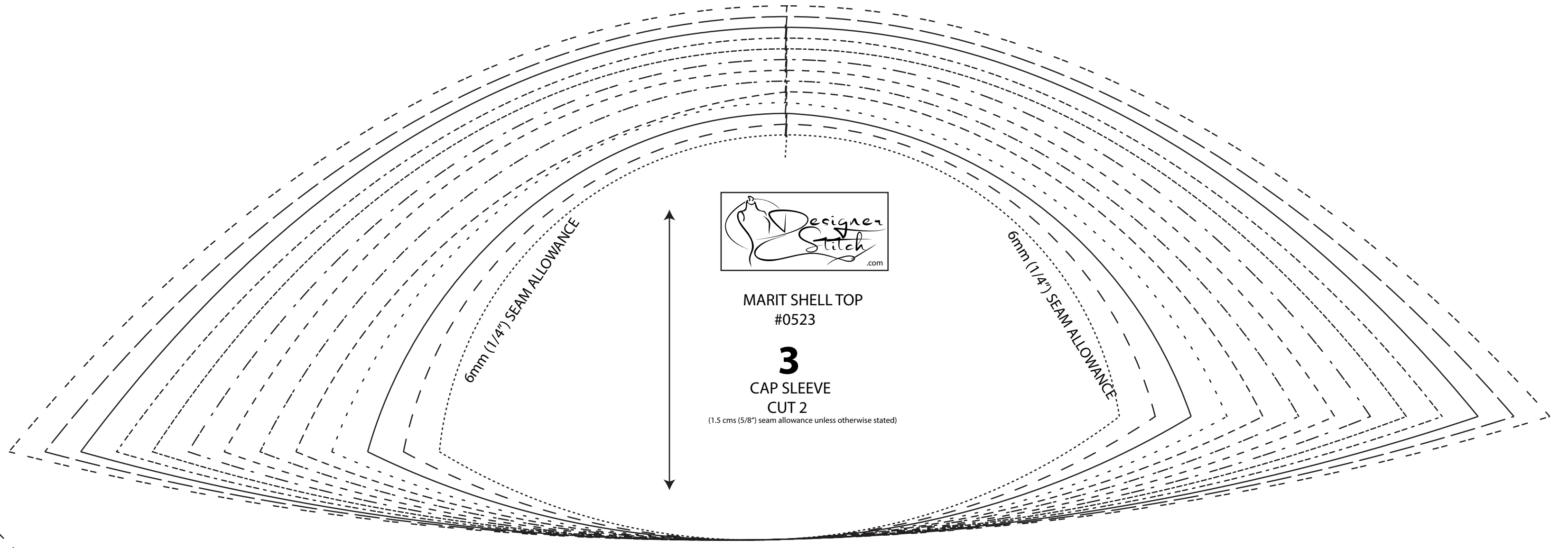


MARIT SHELL TOP
#0523

2

FRONT - C CUP
CUT 1 FOLD

(1.5 cms (5/8") seam allowance unless otherwise stated)

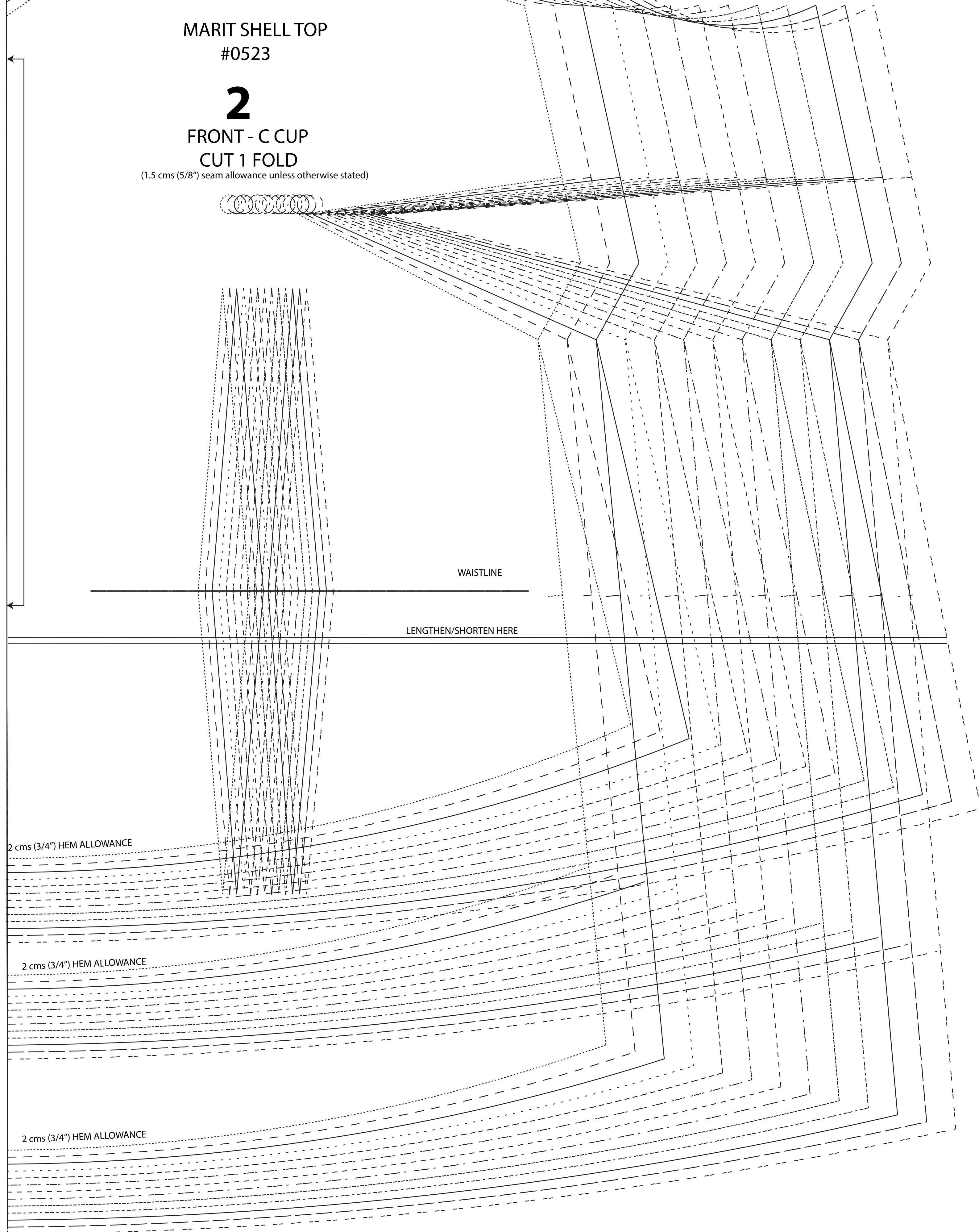


MARIT SHELL TOP
#0523

3

CAP SLEEVE
CUT 2

(1.5 cms (5/8") seam allowance unless otherwise stated)



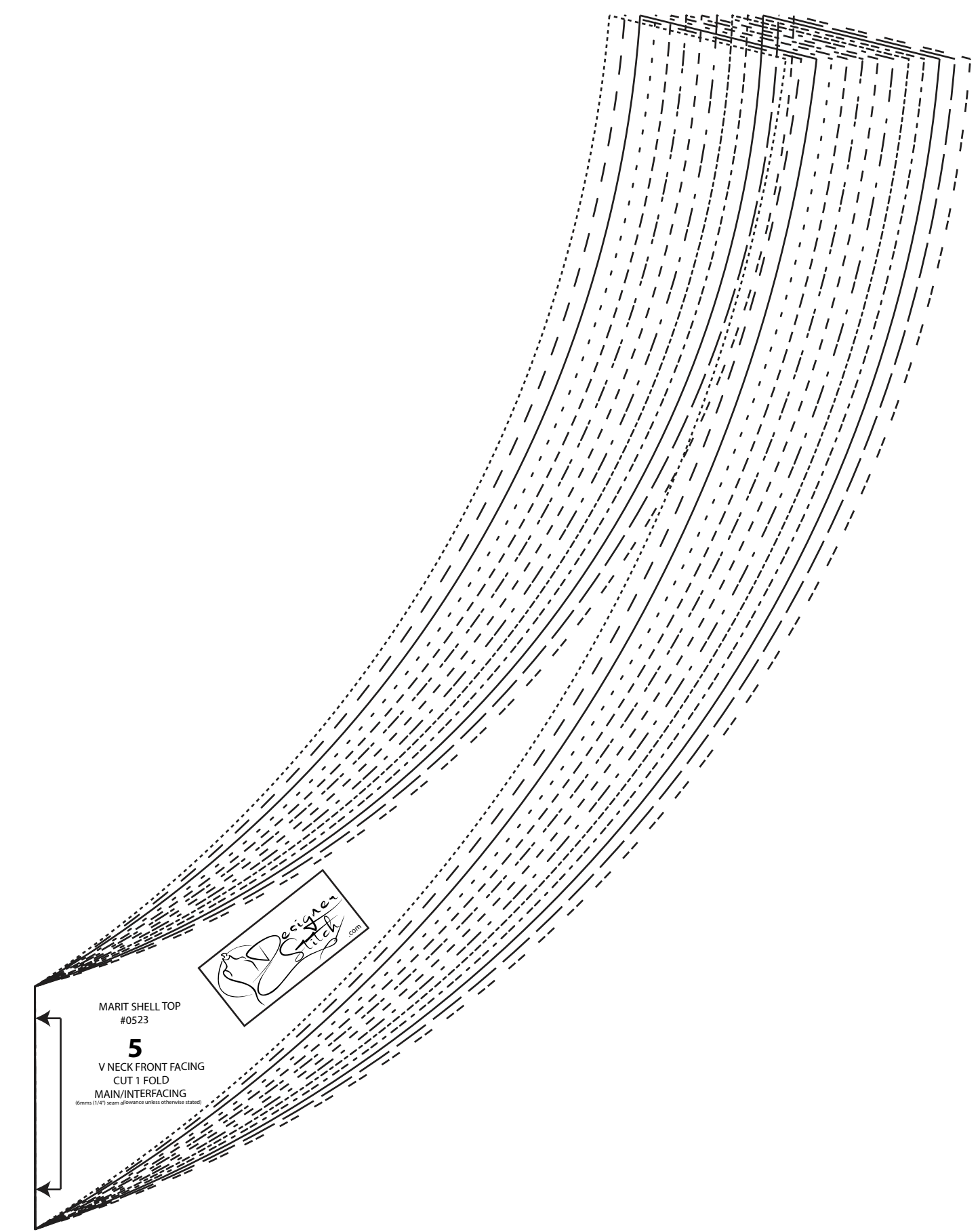
WAISTLINE

LENGTHEN/SHORTEN HERE

2 cms (3/4") HEM ALLOWANCE

2 cms (3/4") HEM ALLOWANCE

2 cms (3/4") HEM ALLOWANCE



MARIT SHELL TOP
#0523

5

BACK - FRONT FACING
CUT FOLD
MANUFACTURING



MARIT SHELL TOP
#0523

10

BACK NECK BIND
CUT 2