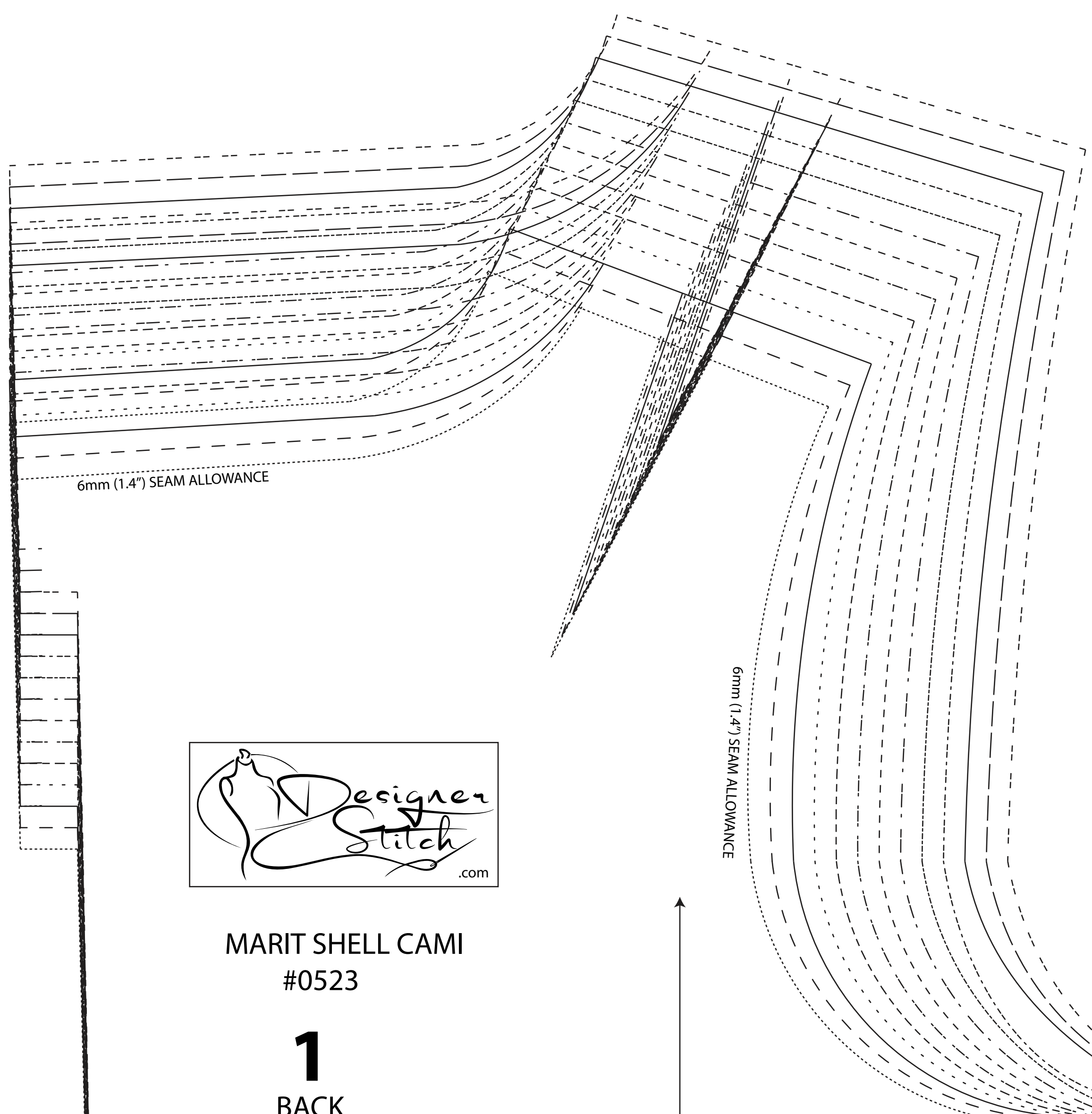
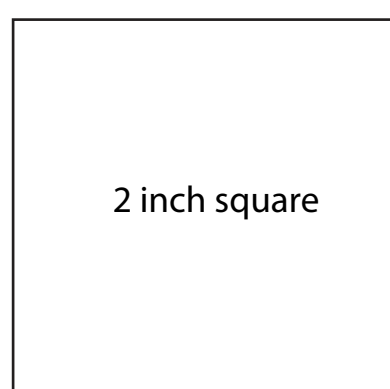
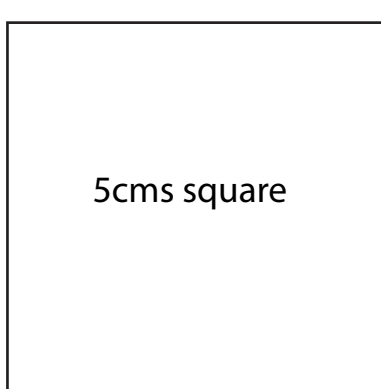




MARIT SHELL CAMI #0523



6mm (1/4") SEAM ALLOWANCE

6mm (1/4") SEAM ALLOWANCE

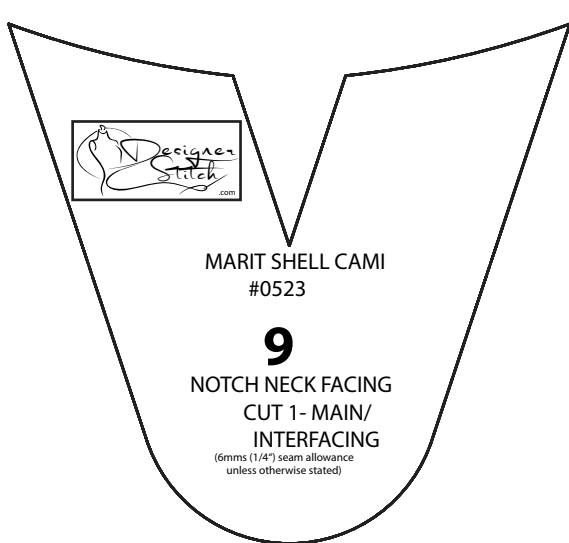


MARIT SHELL CAMI #0523

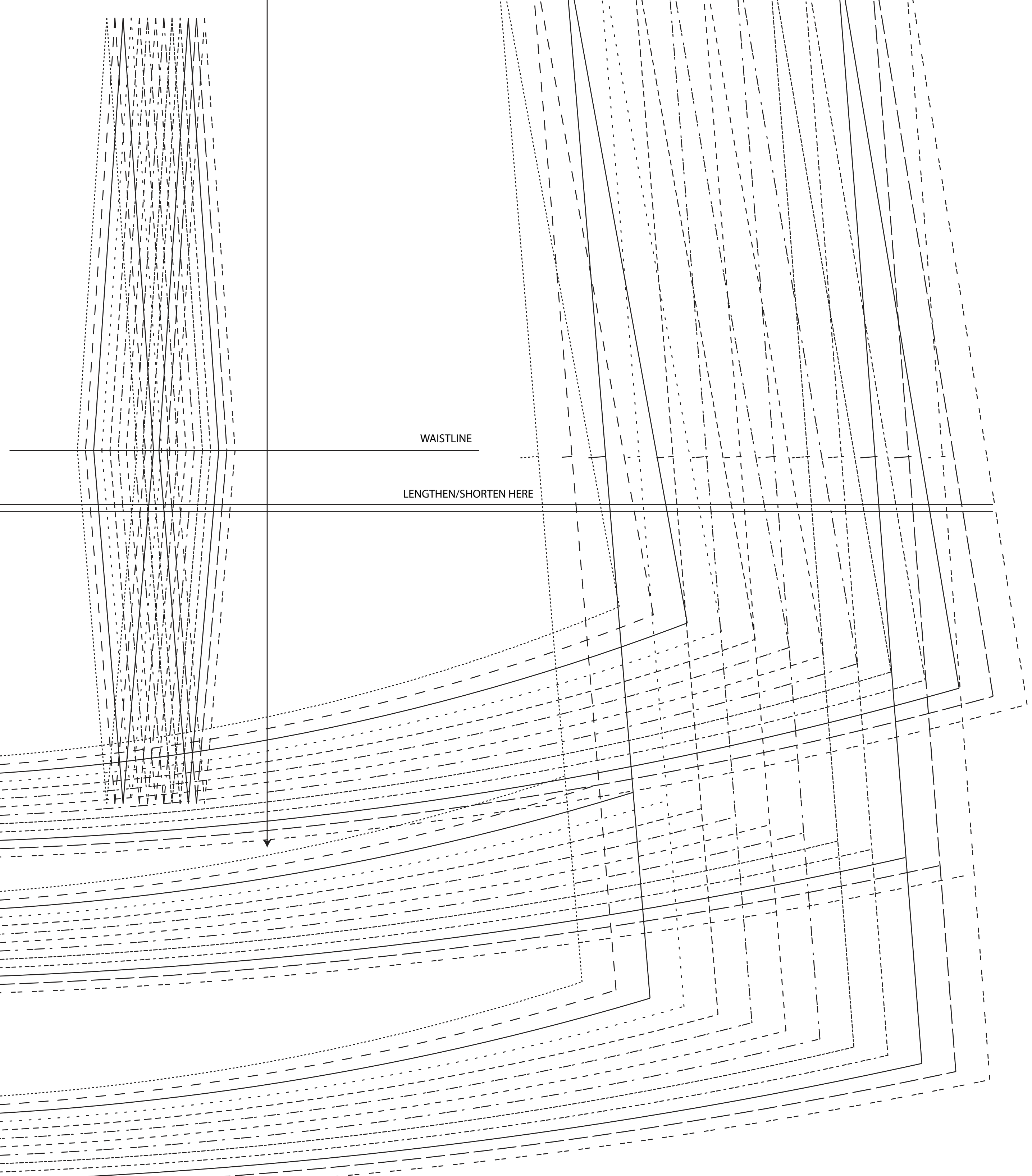
1

BACK CUT 2

(1.5 cms (5/8") seam allowance unless otherwise stated)



MARIT SHELL CAMI #0523
9
NOTCH NECK FACING
CUT 1 - MAIN
INTERFACING



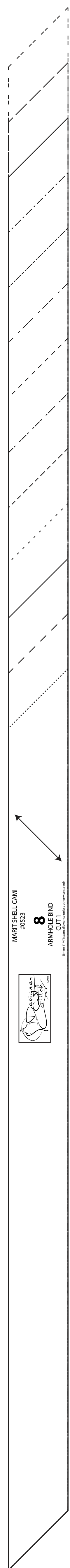
WAISTLINE

LENGTHEN/SHORTEN HERE

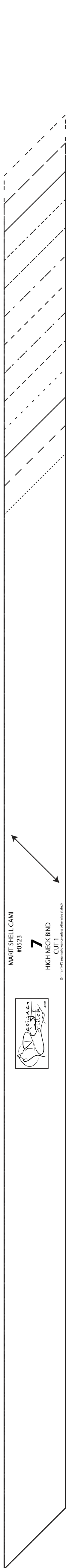
2 cms (3/4") HEM ALLOWANCE

2 cms (3/4") HEM ALLOWANCE

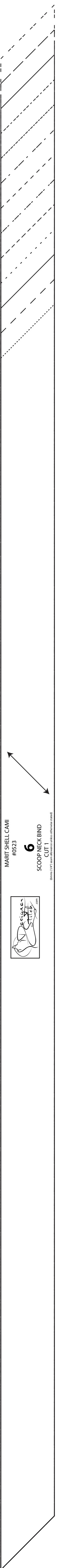
2 cms (3/4") HEM ALLOWANCE



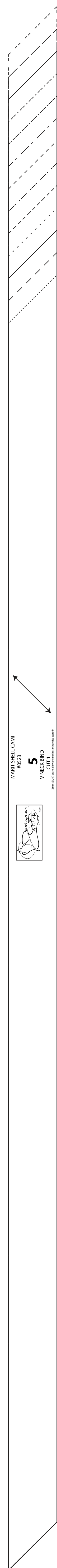
MARIT SHELL CAMI #0523
8
ARMHOLE BAND
CUT 1



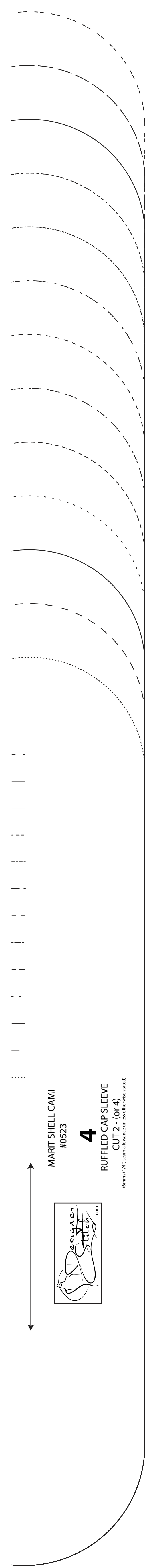
MARIT SHELL CAMI #0523
7
HIGH NECK BAND
CUT 1



MARIT SHELL CAMI #0523
6
SCOOP NECK BAND
CUT 1



MARIT SHELL CAMI #0523
5
V NECK BAND
CUT 1

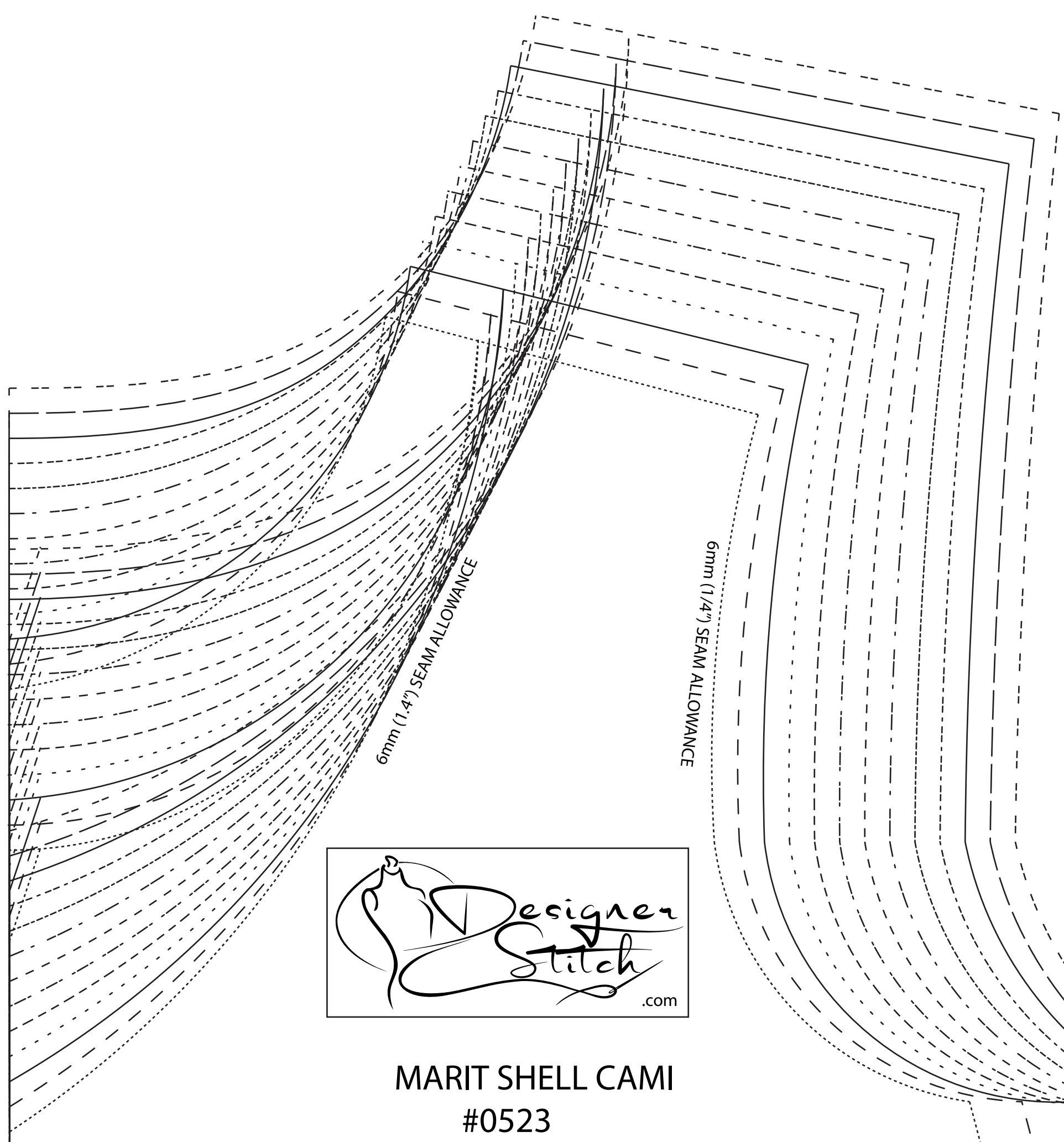


MARIT SHELL CAMI #0523
4
RUFFLED CAP SLEEVE
CUT 2 - (6x4)



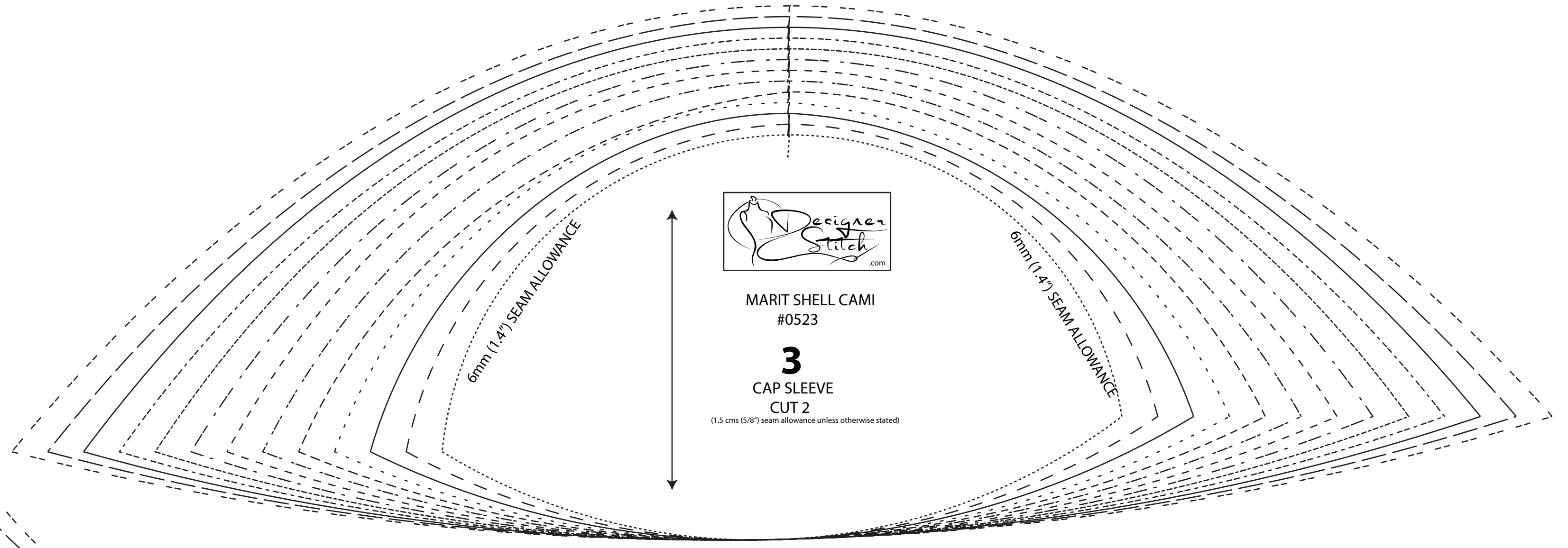
© 2014 Designer Stitch LLC. All rights reserved.

D Cup



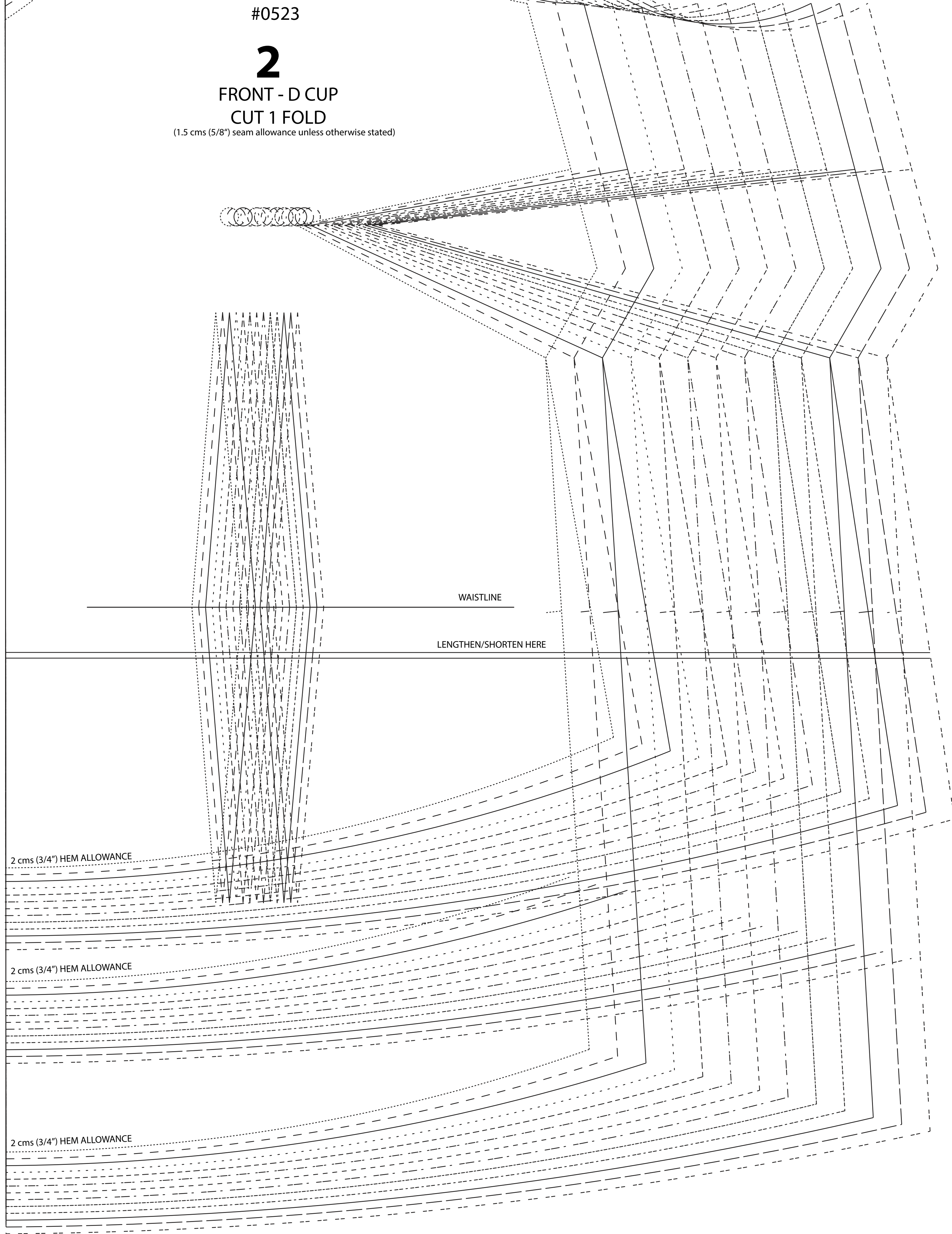
MARIT SHELL CAMI
#0523

2
FRONT - D CUP
CUT 1 FOLD
(1.5 cms (5/8") seam allowance unless otherwise stated)



MARIT SHELL CAMI
#0523

3
CAP SLEEVE
CUT 2
(1.5 cms (5/8") seam allowance unless otherwise stated)



WAISTLINE

LENGTHEN/SHORTEN HERE

2 cms (3/4") HEM ALLOWANCE

2 cms (3/4") HEM ALLOWANCE

2 cms (3/4") HEM ALLOWANCE