

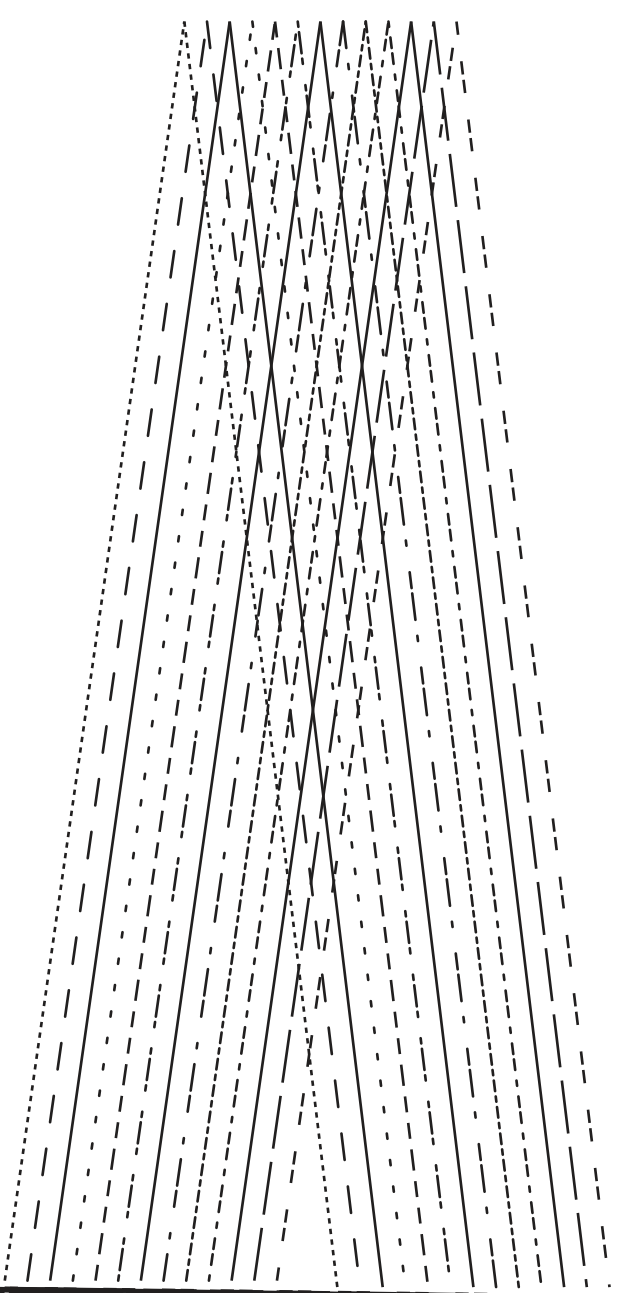


YASMIN WRAP DRESS
#0723

1

BACK
CUT 2

(1.5 cms (5/8") seam allowance unless otherwise stated)



1 cms (3/8") SEAM ALLOWANCE

6 mm (1/4") SEAM ALLOWANCE

1 cms (3/8") SEAM ALLOWANCE

(1.5 cms (5/8") seam allowance unless otherwise stated)
CUT 2

FRONT - B CUP

2

YASMIN WRAP DRESS
#0723



1 cms (3/8") SEAM ALLOWANCE

6 mm (1/4") SEAM ALLOWANCE

1 cms (3/8") SEAM ALLOWANCE

1 cms (3/8") SEAM ALLOWANCE

HIPLINE



YASMIN WRAP DRESS
#0723

3

BACK SKIRT
CUT 1 FOLD

(1.5 cms (5/8") seam allowance unless otherwise stated)

CUT HERE FOR 55 cms (21 3/4")

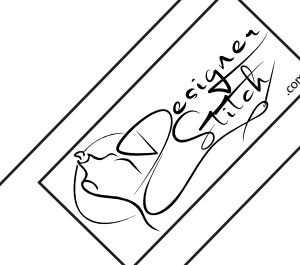
CUT HERE FOR 60 cms (23 1/2")

YASMIN WRAP DRESS
#0723

10

CUFF
CUT 2 - MAIN/INTERFACING

(1.5 cms (5/8") seam allowance unless otherwise stated)



11

CUFF

CUT 2 - INTERFACING

(1.5 cms (5/8") seam allowance unless otherwise stated)

1 cms (3/8") SEAM ALLOWANCE

1 cms (3/8") SEAM ALLOWANCE

Designer
Stitch

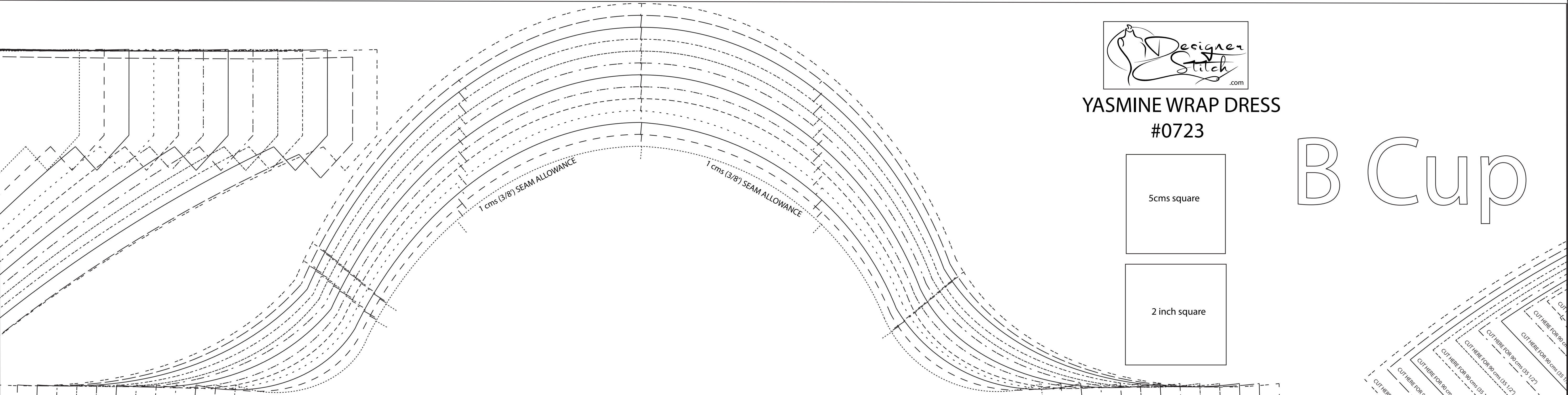


YASMINE WRAP DRESS #0723

B Cup

5cms square

2 inch square



YASMIN WRAP DRESS #0723

12

SHIRRED SLEEVE CUT 2

(1.5 cms (5/8") seam allowance unless otherwise stated)

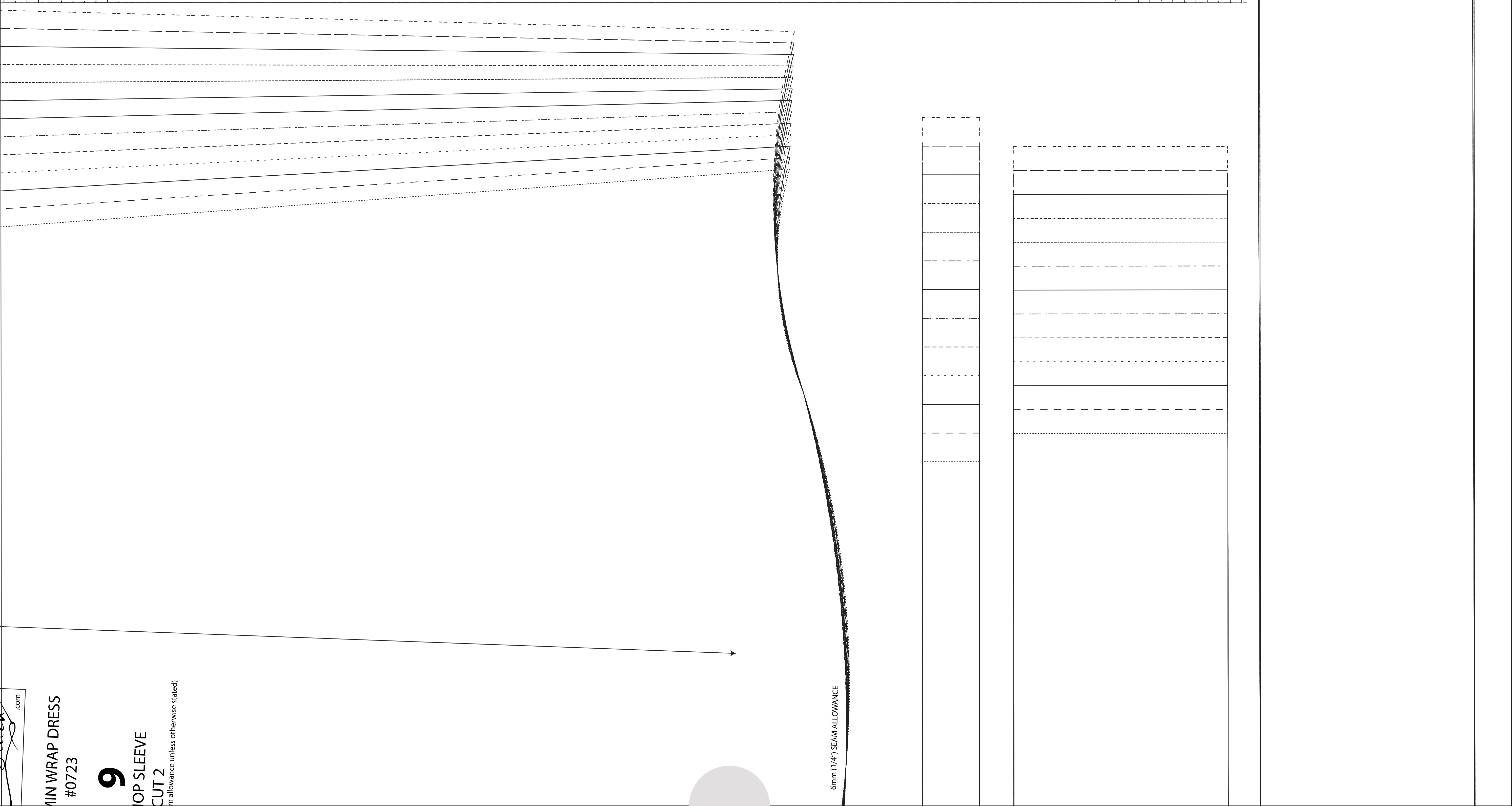
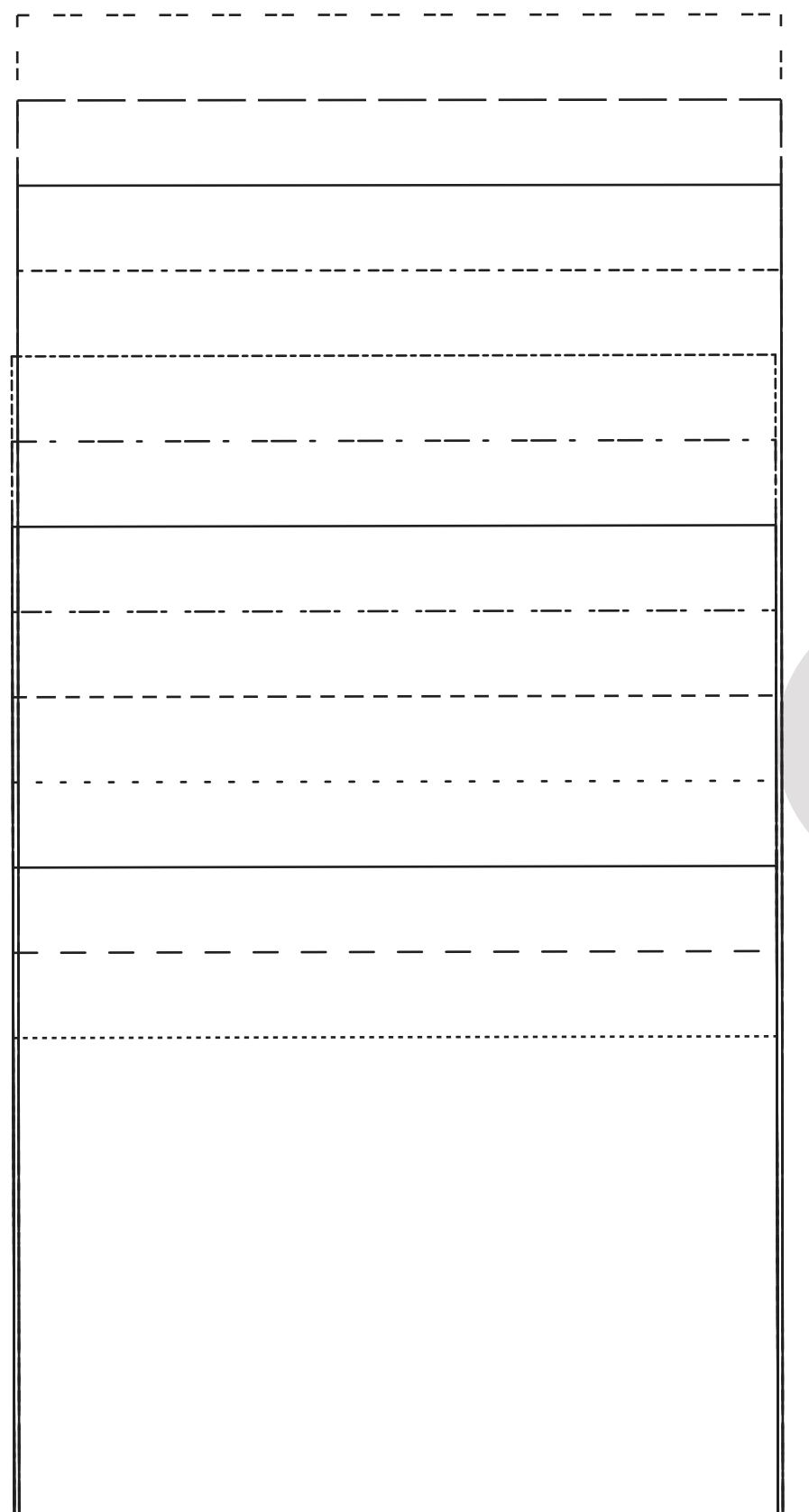
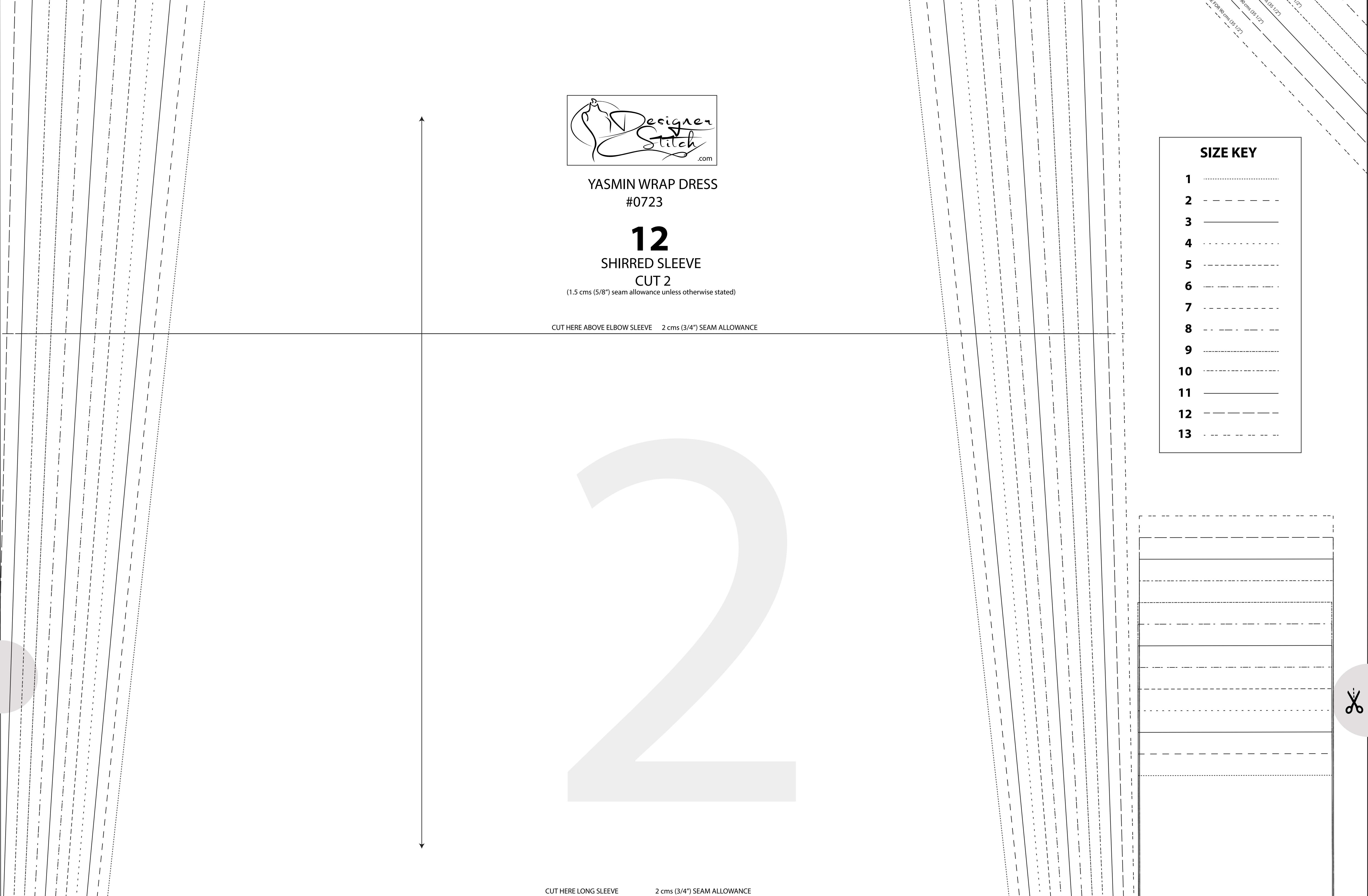
CUT HERE ABOVE ELBOW SLEEVE 2 cms (3/4") SEAM ALLOWANCE

SIZE KEY

- 1 (dotted line)
- 2 - - - - - (dashed line)
- 3 _____ (solid line)
- 4 (dotted line)
- 5 - - - - - (dashed line)
- 6 (dotted line)
- 7 - - - - - (dashed line)
- 8 (dotted line)
- 9 _____ (solid line)
- 10 (dotted line)
- 11 - - - - - (dashed line)
- 12 (dotted line)
- 13 - - - - - (dashed line)

2

CUT HERE LONG SLEEVE 2 cms (3/4") SEAM ALLOWANCE



YASMIN WRAP DRESS #0723

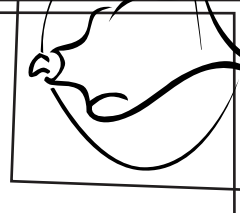
9

TOP SLEEVE CUT 2

(1.5 cms (5/8") seam allowance unless otherwise stated)

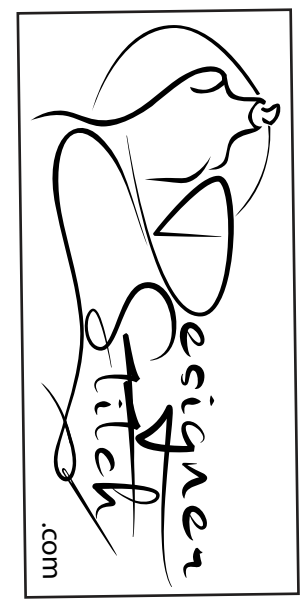
6mm (1/4") SEAM ALLOWANCE





SIDE SEAM
SIDE SEAM
SIDE SEAM
SIDE SEAM

1cm (3/8") SEAM ALLOWANCE



YASMIN WRAP DRESS
#0723

4
FRONT SKIRT
CUT 2

(1.5 cm (5/8") seam allowance unless otherwise stated)

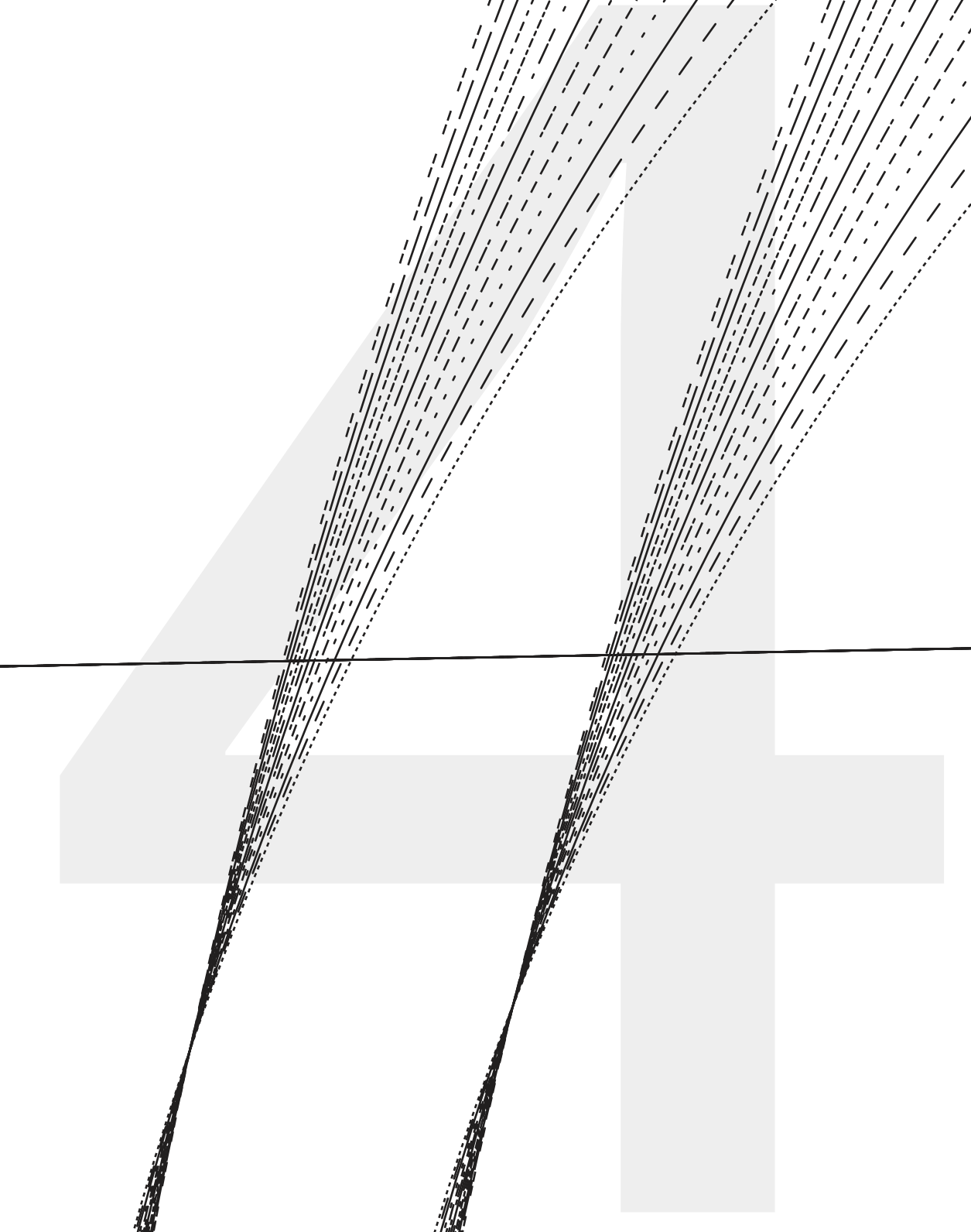
CENTRE FRONT

HIPLINE



CUT HERE FOR 75 cm (29 1/2")

CUT HERE FOR 90 cm (35 1/2")

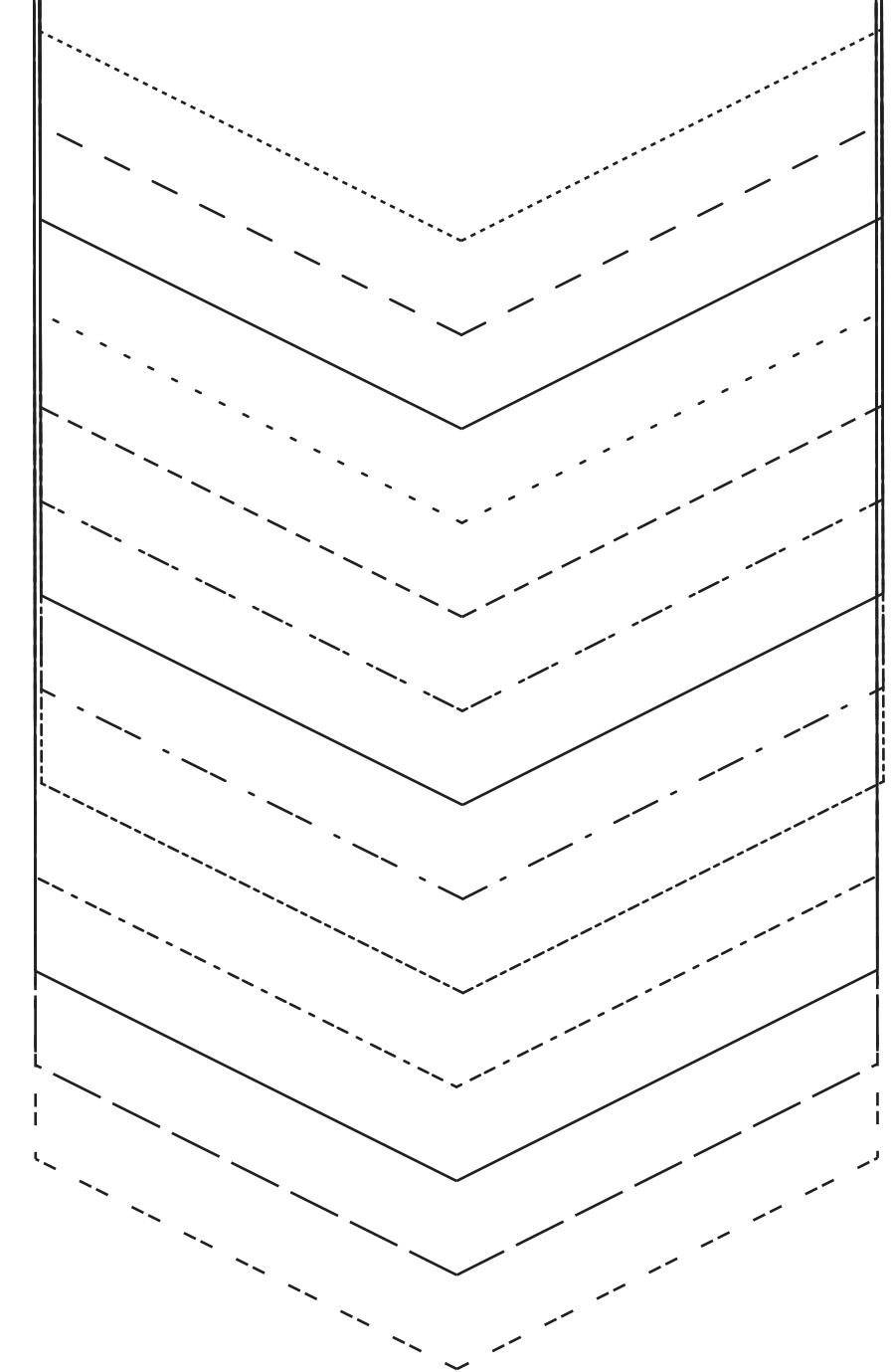
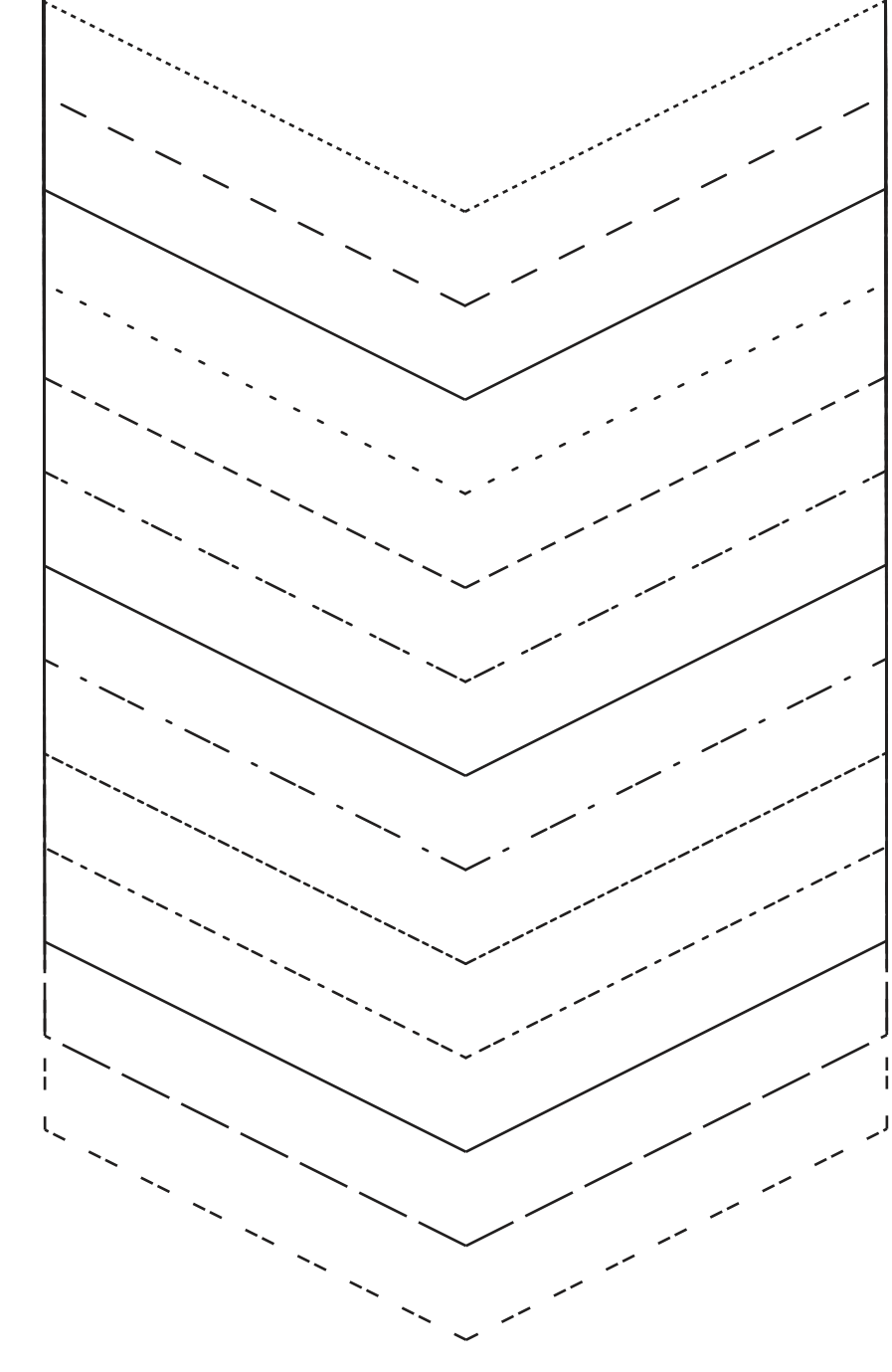
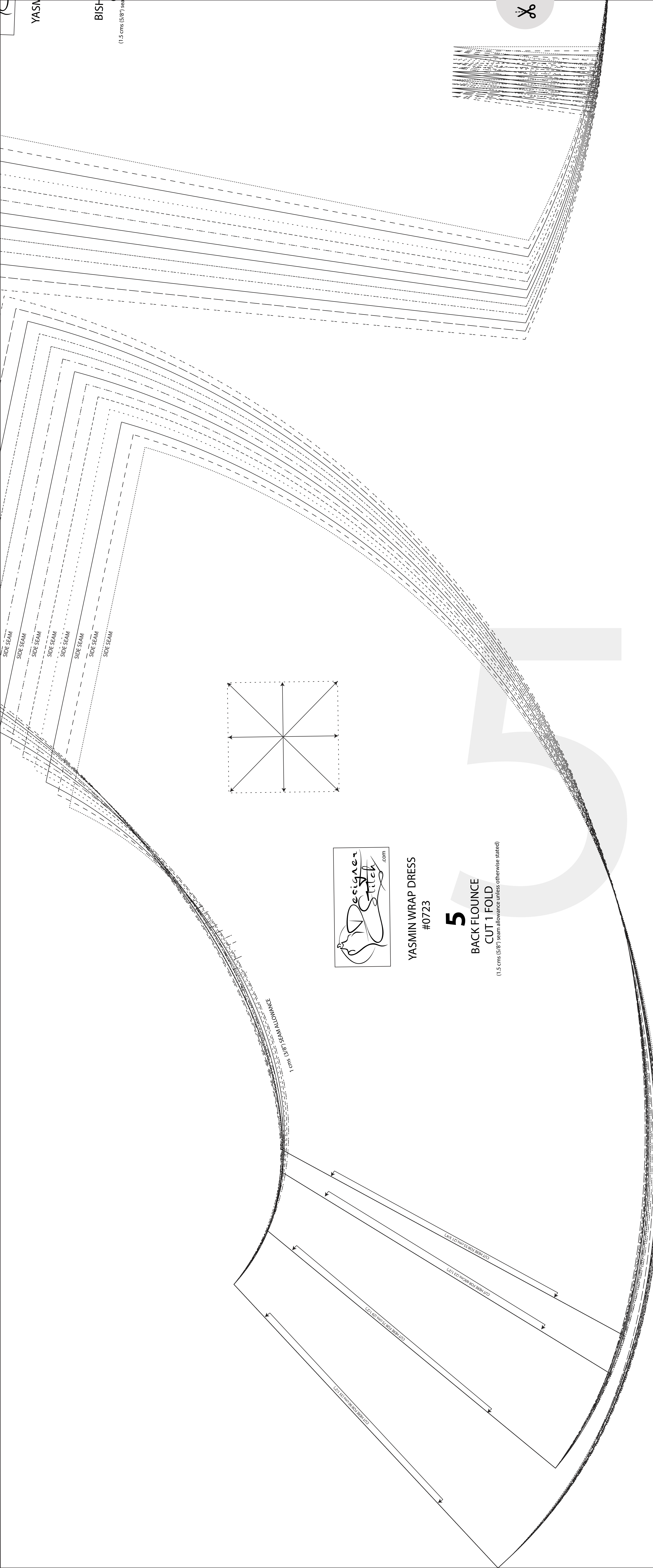


CUT HERE FOR 90 cm (35 1/2")

CUT HERE FOR 75 cm (29 1/2")

CUT HERE FOR 90 cm (35 1/2")

CUT HERE FOR 90 cm (35 1/2")

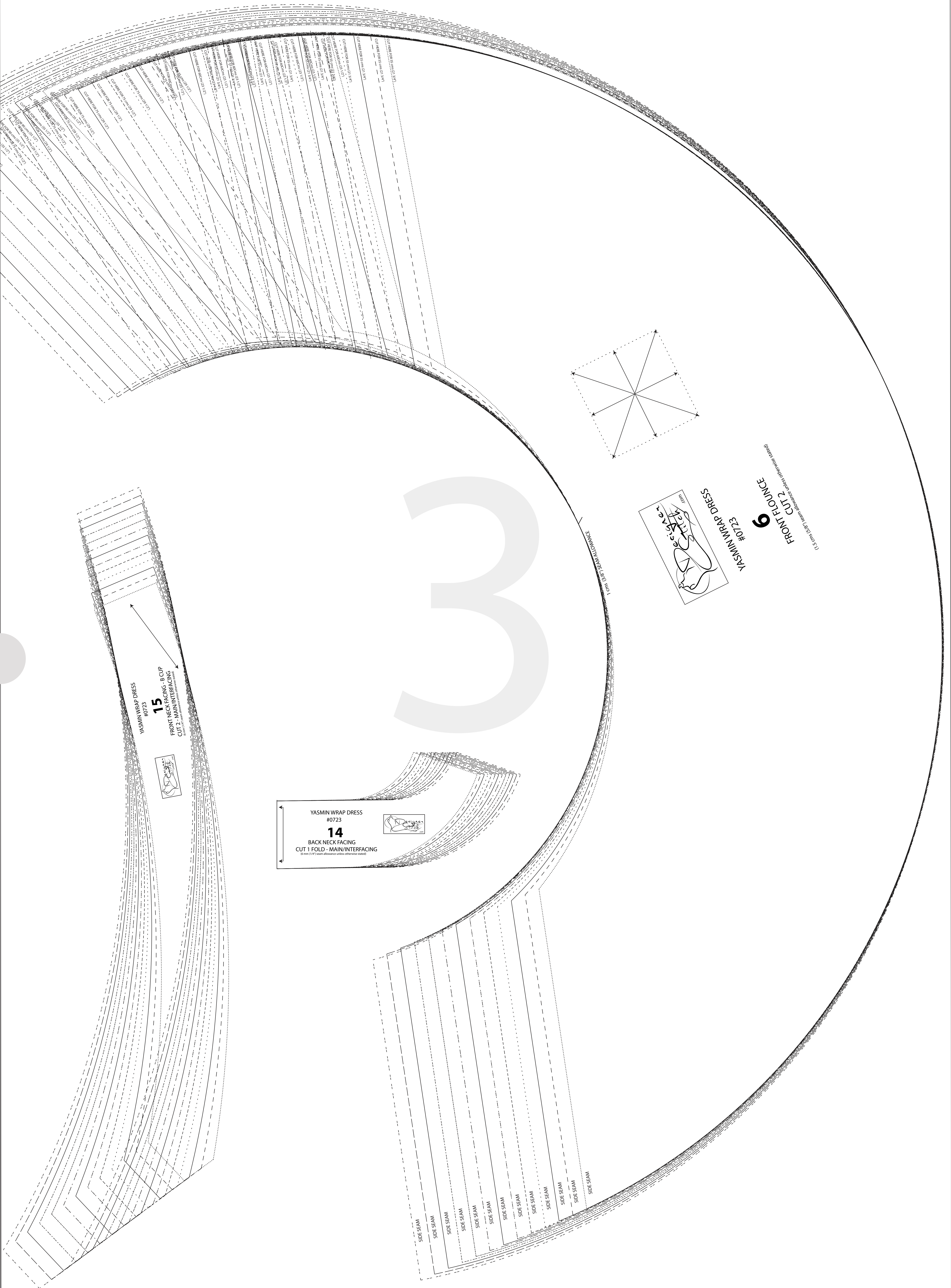


13
YASMIN WRAP DRESS #0723
NECK BIND - CUP B
6 mm (1/4") seam allowance unless otherwise stated

YASMIN WRAP DRESS #0723
8
LEFT WAIST TIE
CUT 1
(6 mm (1/4") seam allowance unless otherwise stated)



YASMIN WRAP DRESS #0723
7
RIGHT WAIST TIE
CUT 1
(6 mm (1/4") seam allowance unless otherwise stated)



YASMIN WRAP DRESS #0723

15

FRONT NECK FACING - B CUP
CUT 2 - MAIN/INTERFACING



YASMIN WRAP DRESS #0723

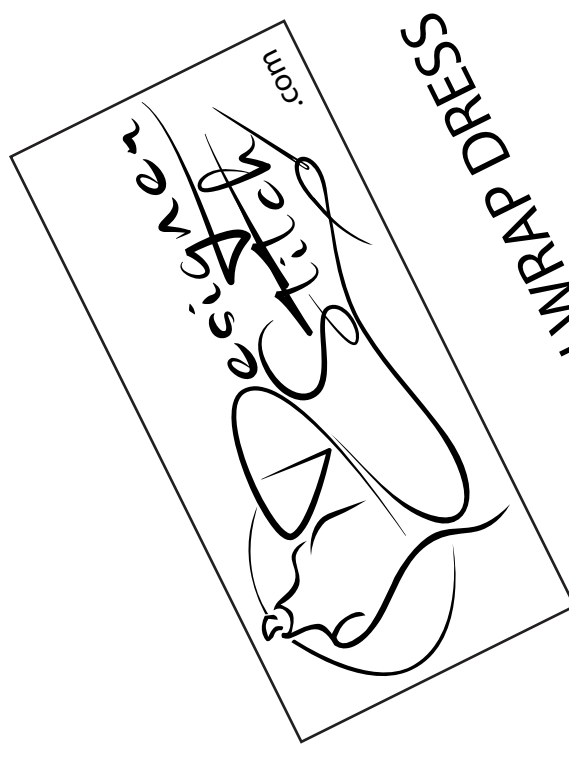
14

BACK NECK FACING
CUT 1 FOLD - MAIN/INTERFACING



SIDE SEAM
SIDE SEAM
SIDE SEAM
SIDE SEAM
SIDE SEAM
SIDE SEAM
SIDE SEAM
SIDE SEAM
SIDE SEAM
SIDE SEAM
SIDE SEAM

1 cm 3/8" SEAM ALLOWANCE



YASMIN WRAP DRESS #0723

6
FRONT FOUNCE
CUT 2

1 cm 3/8" SEAM ALLOWANCE
0.5 cm 3/16" SEAM ALLOWANCE

