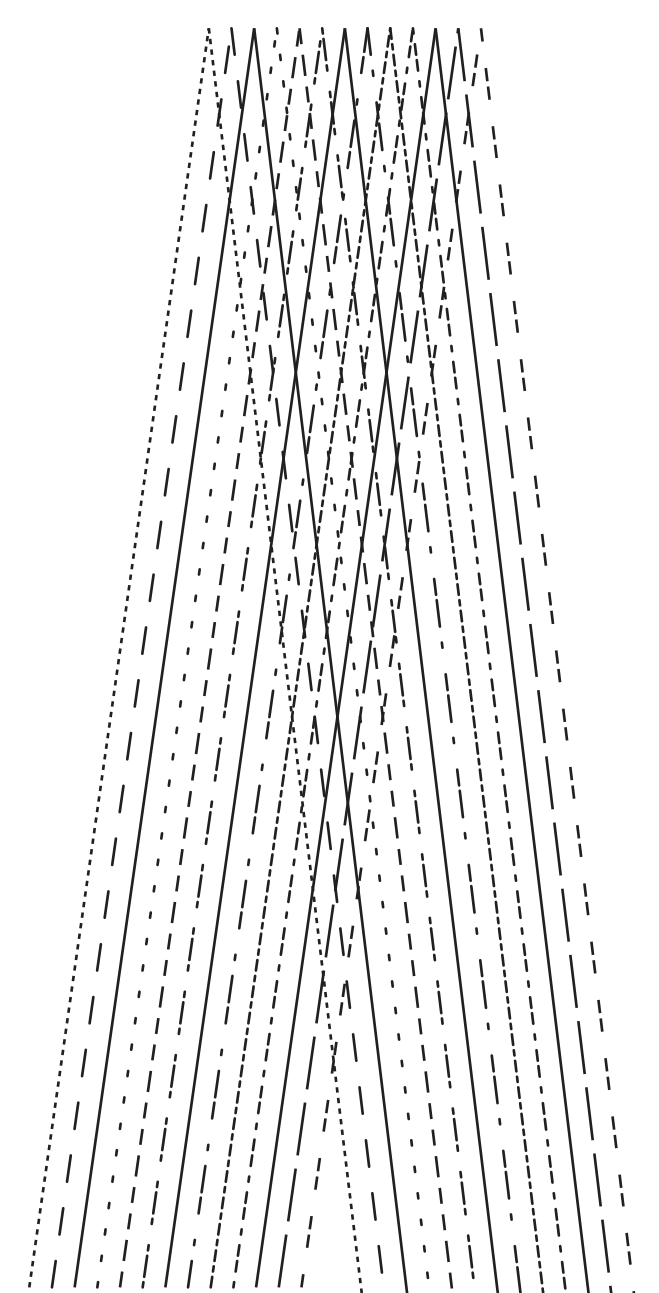




YASMIN WRAP DRESS #0723

1
BACK
CUT 2

(1.5 cms (5/8") seam allowance unless otherwise stated)



1 cms (3/8") SEAM ALLOWANCE

6 mm (1/4") SEAM ALLOWANCE

1 cms (3/8") SEAM ALLOWANCE

(1.5 cms (5/8") seam allowance unless otherwise stated)

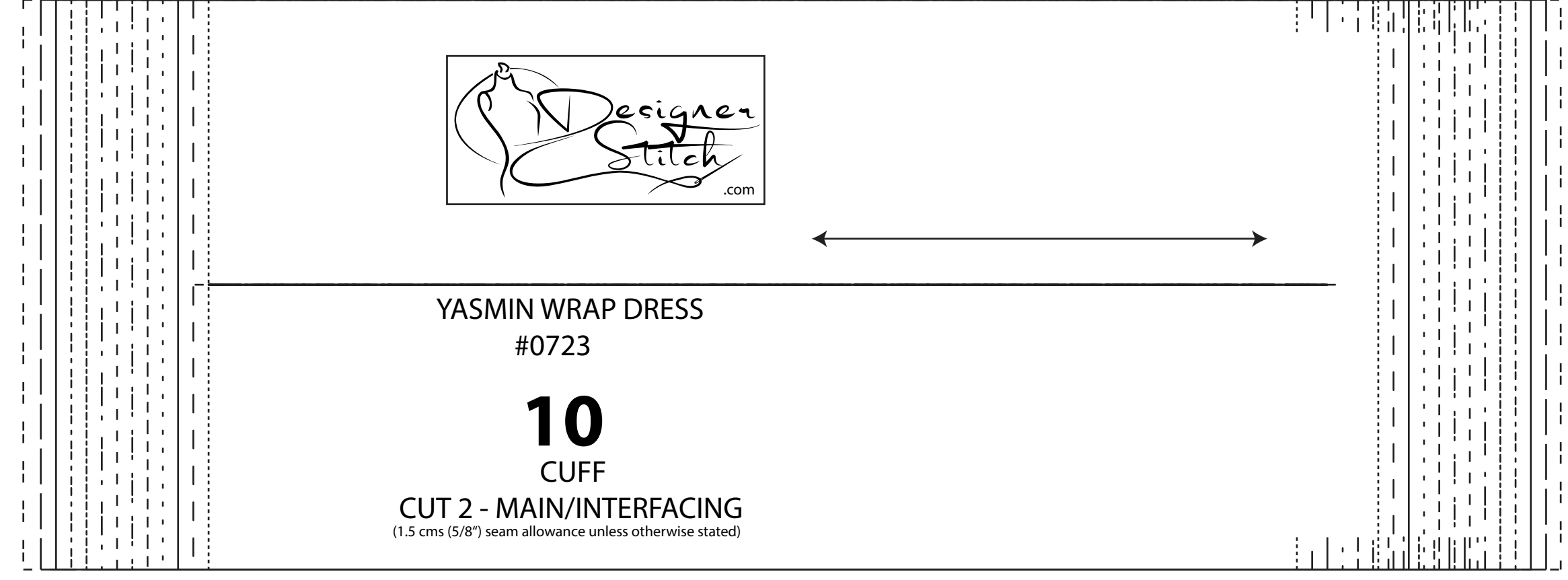
2
FRONT - D CUP
CUT 2

YASMIN WRAP DRESS #0723



1 cms (3/8") SEAM ALLOWANCE

6 mm (1/4") SEAM ALLOWANCE



YASMIN WRAP DRESS #0723

10
CUFF

CUT 2 - MAIN/INTERFACING
(1.5 cms (5/8") seam allowance unless otherwise stated)

HIPLINE



YASMIN WRAP DRESS #0723

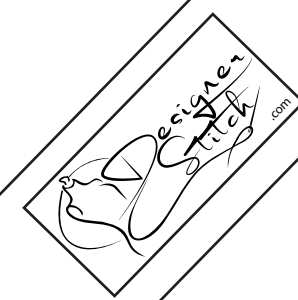
3
BACK SKIRT
CUT 1 FOLD

(1.5 cms (5/8") seam allowance unless otherwise stated)

CUT HERE FOR 55 cms (21 3/4")

CUT HERE FOR 60 cms (23 1/2")

11
NECKLINE FINISH



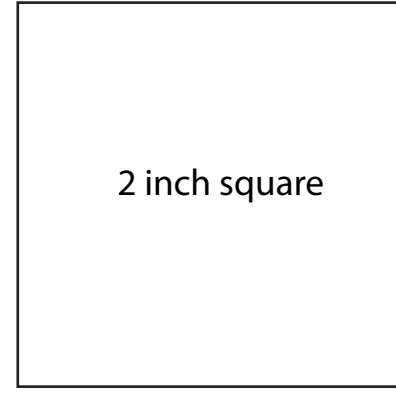
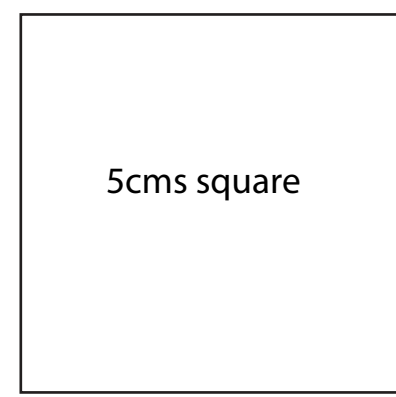
1 cms (3/8") SEAM ALLOWANCE

1 cms (3/8") SEAM ALLOWANCE



YASMINE WRAP DRESS #0723

D Cup



YASMIN WRAP DRESS #0723

12

SHIRRED SLEEVE CUT 2

(1.5 cms (5/8") seam allowance unless otherwise stated)

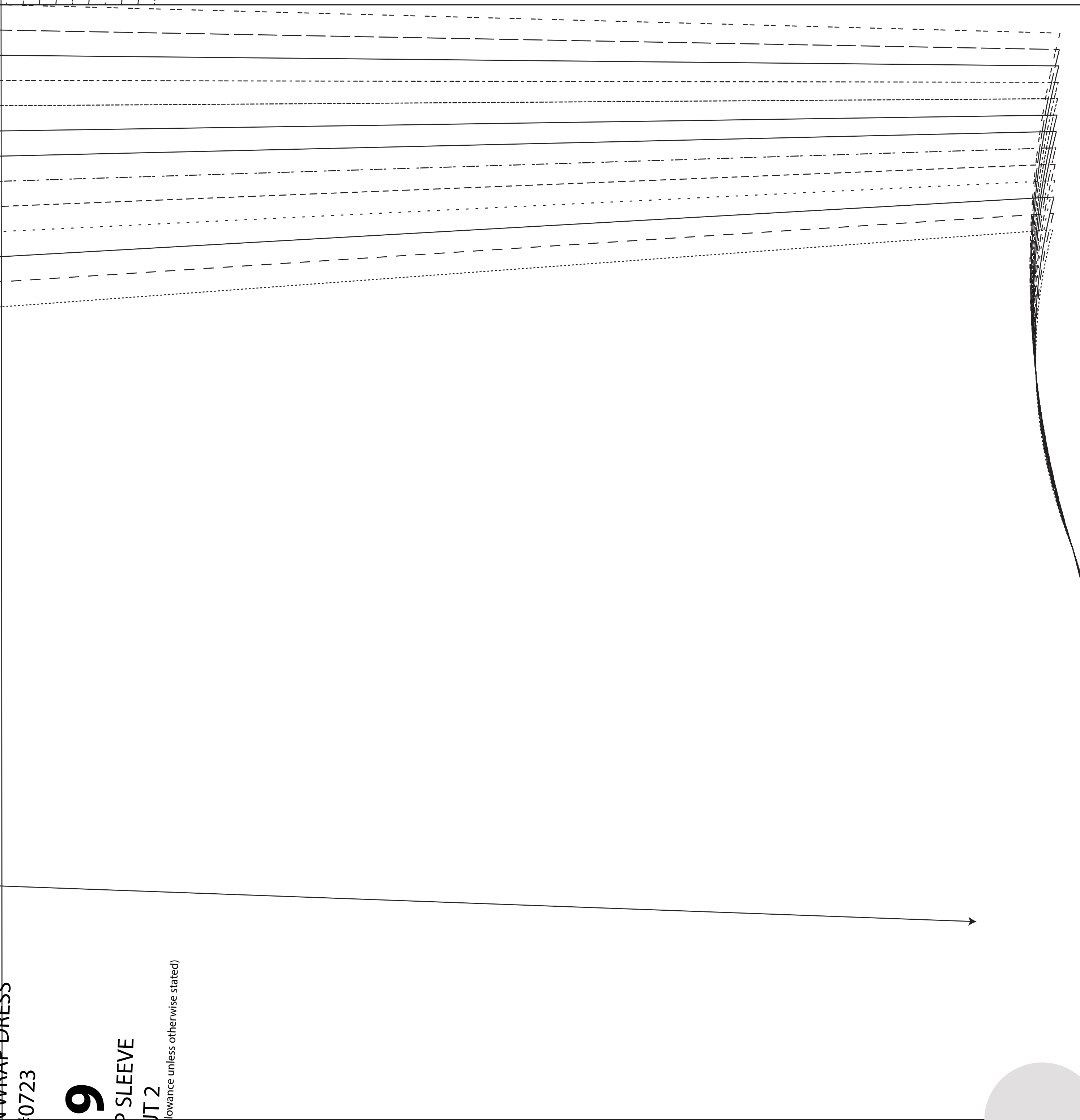
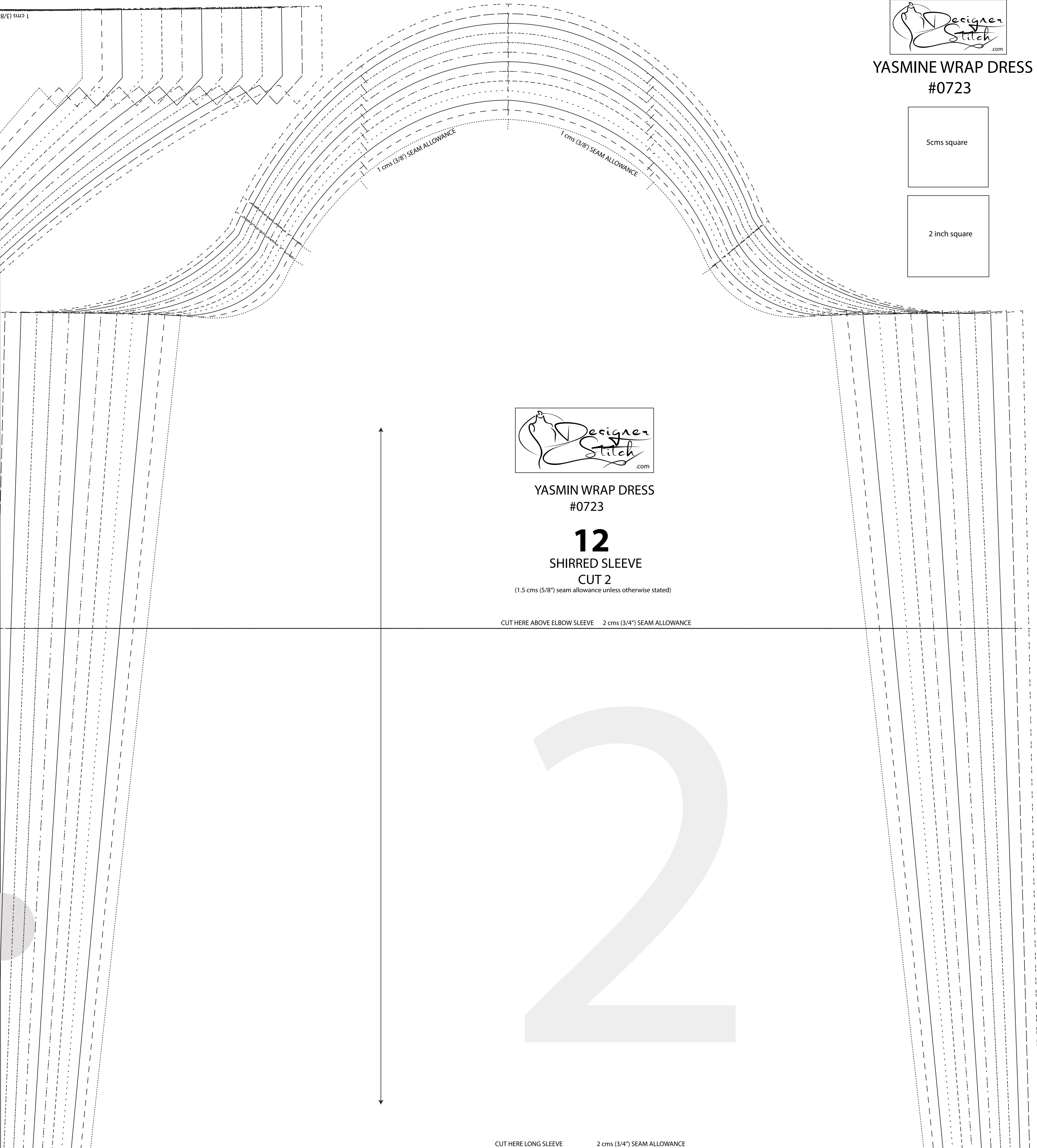
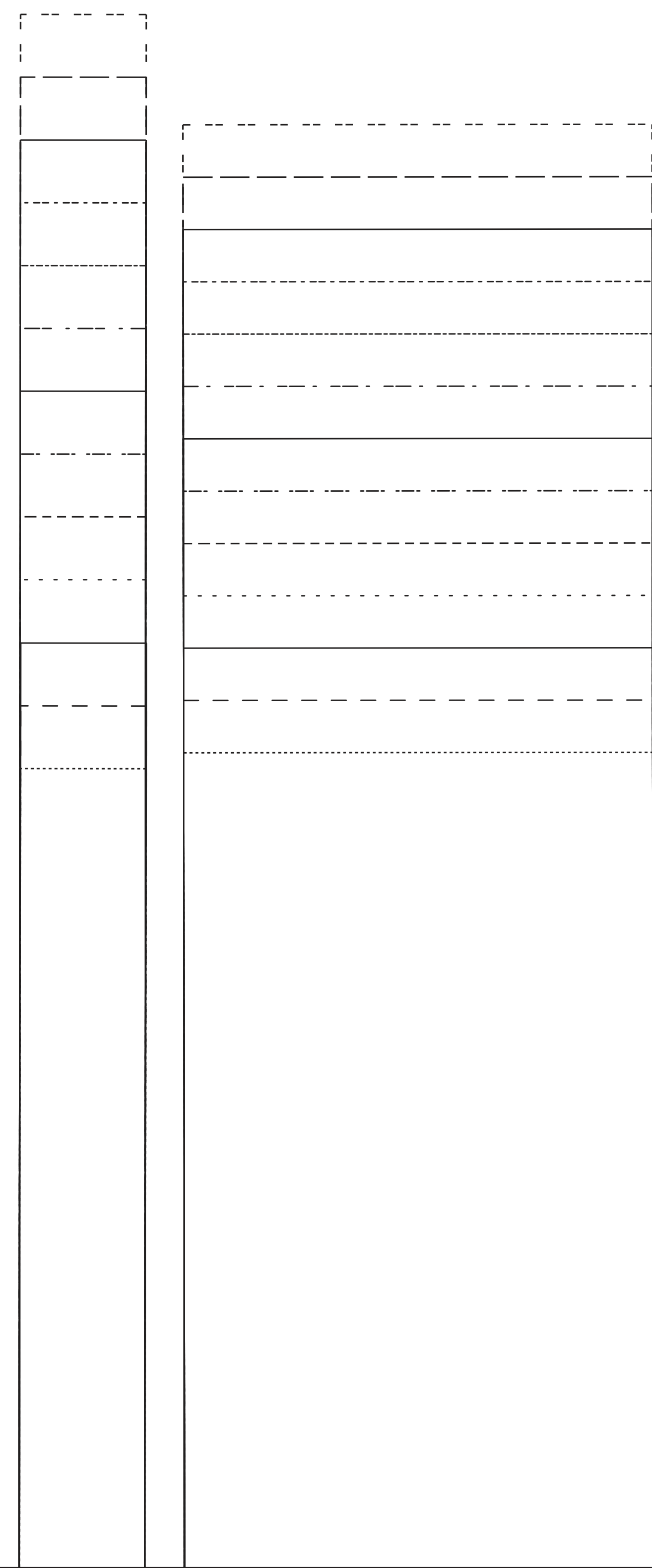
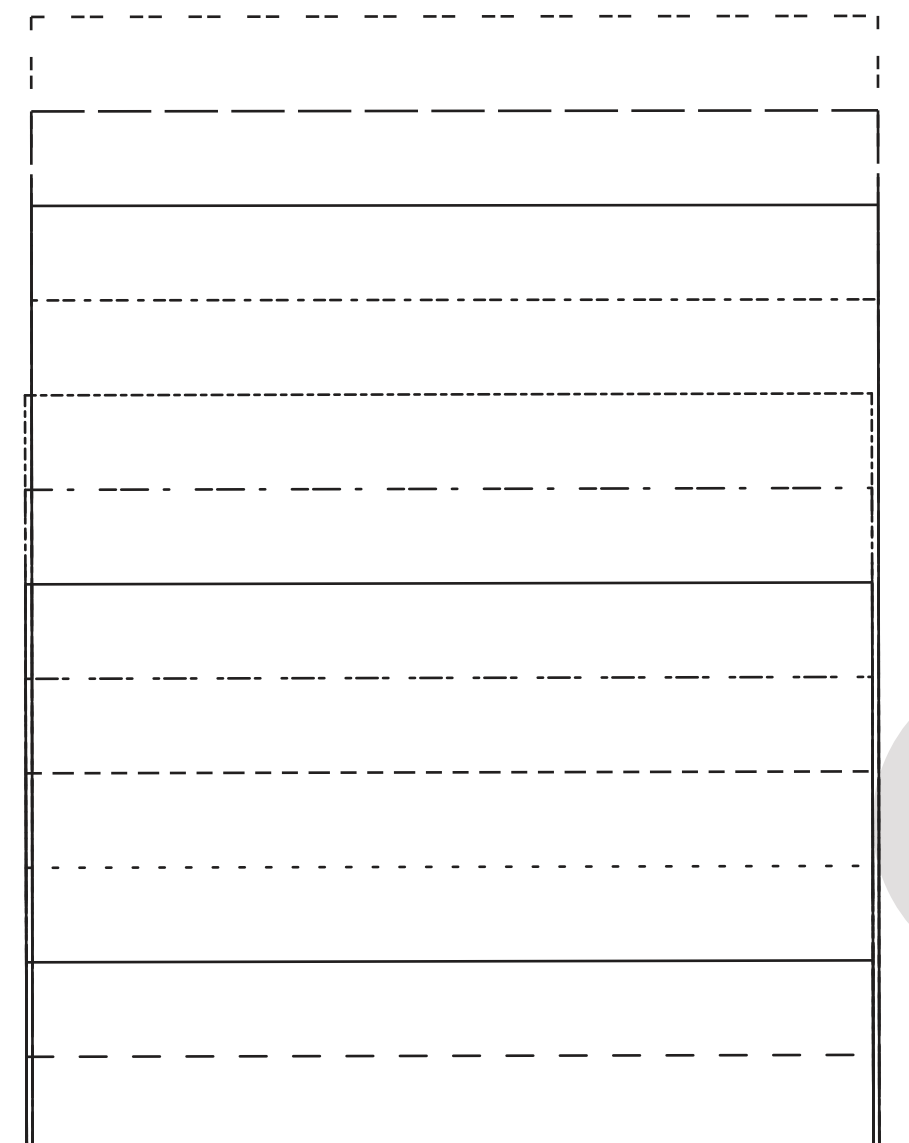
CUT HERE ABOVE ELBOW SLEEVE 2 cms (3/4") SEAM ALLOWANCE

SIZE KEY

- 1 (solid line)
- 2 - - - - - (dashed line)
- 3 _____ (solid line)
- 4 (dotted line)
- 5 - - - - - (dashed line)
- 6 (dotted line)
- 7 - - - - - (dashed line)
- 8 (dotted line)
- 9 - - - - - (dashed line)
- 10 (dotted line)
- 11 _____ (solid line)
- 12 - - - - - (dashed line)
- 13 (dotted line)

2

CUT HERE LONG SLEEVE 2 cms (3/4") SEAM ALLOWANCE

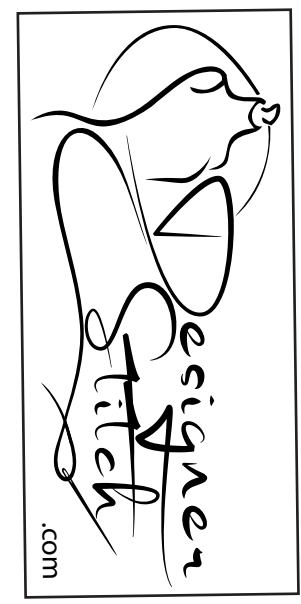


YASMINE WRAP DRESS #0723 SHIRRED SLEEVE CUT 2 (seam allowance unless otherwise stated)

6mm (1/4") SEAM ALLOWANCE

SIDE SEAM
SIDE SEAM
SIDE SEAM
SIDE SEAM
SIDE SEAM

1cm (3/8") SEAM ALLOWANCE



YASMIN WRAP DRESS
#0723

4

FRONT SKIRT
CUT 2
(1.5 cm (5/8") seam allowance unless otherwise stated)

CENTRE FRONT

HIPLINE



CUT HERE FOR 75 cm (29 1/2")

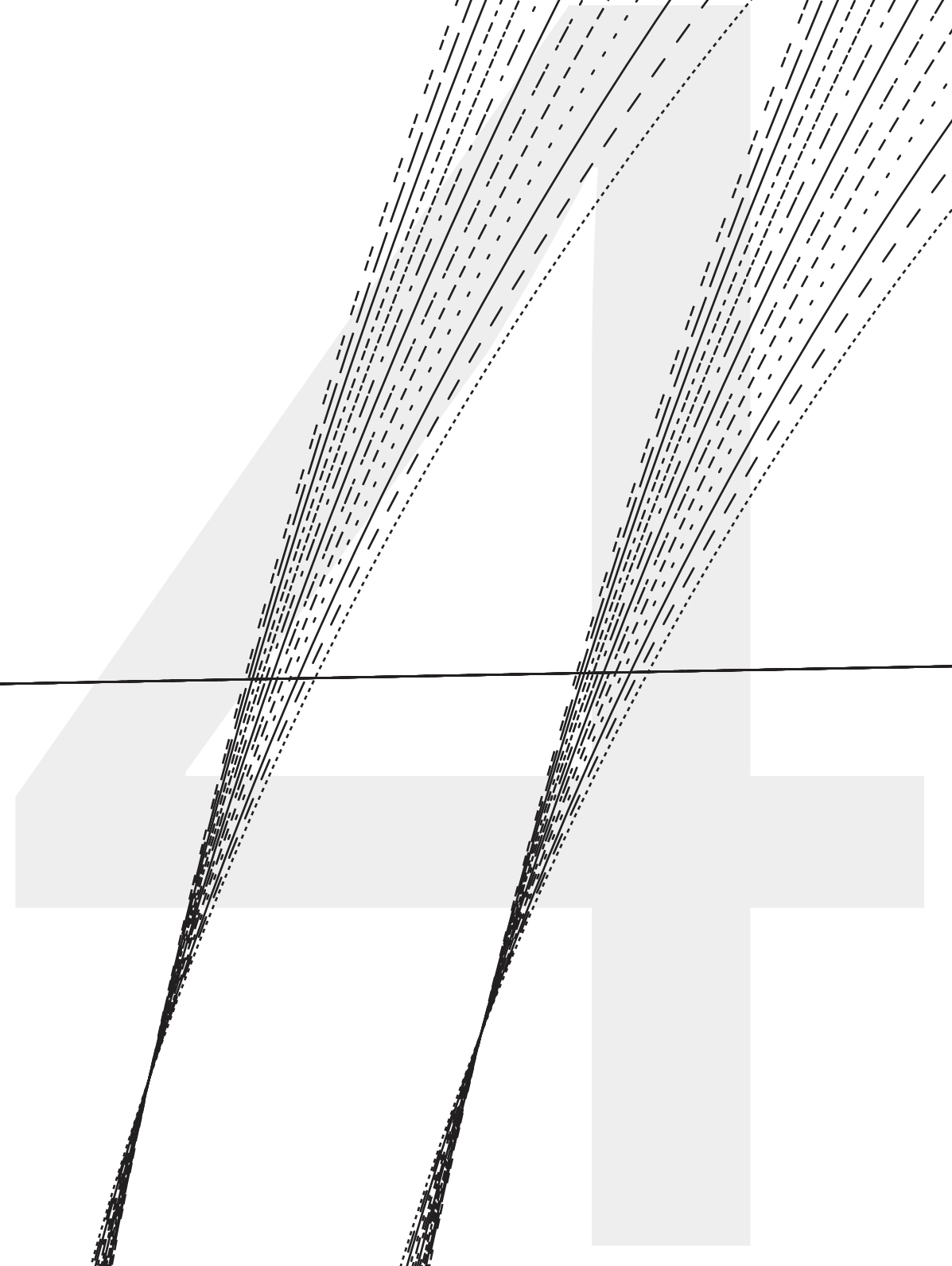
CUT HERE FOR 90 cm (35 1/2")

CUT HERE FOR 90 cm (35 1/2")

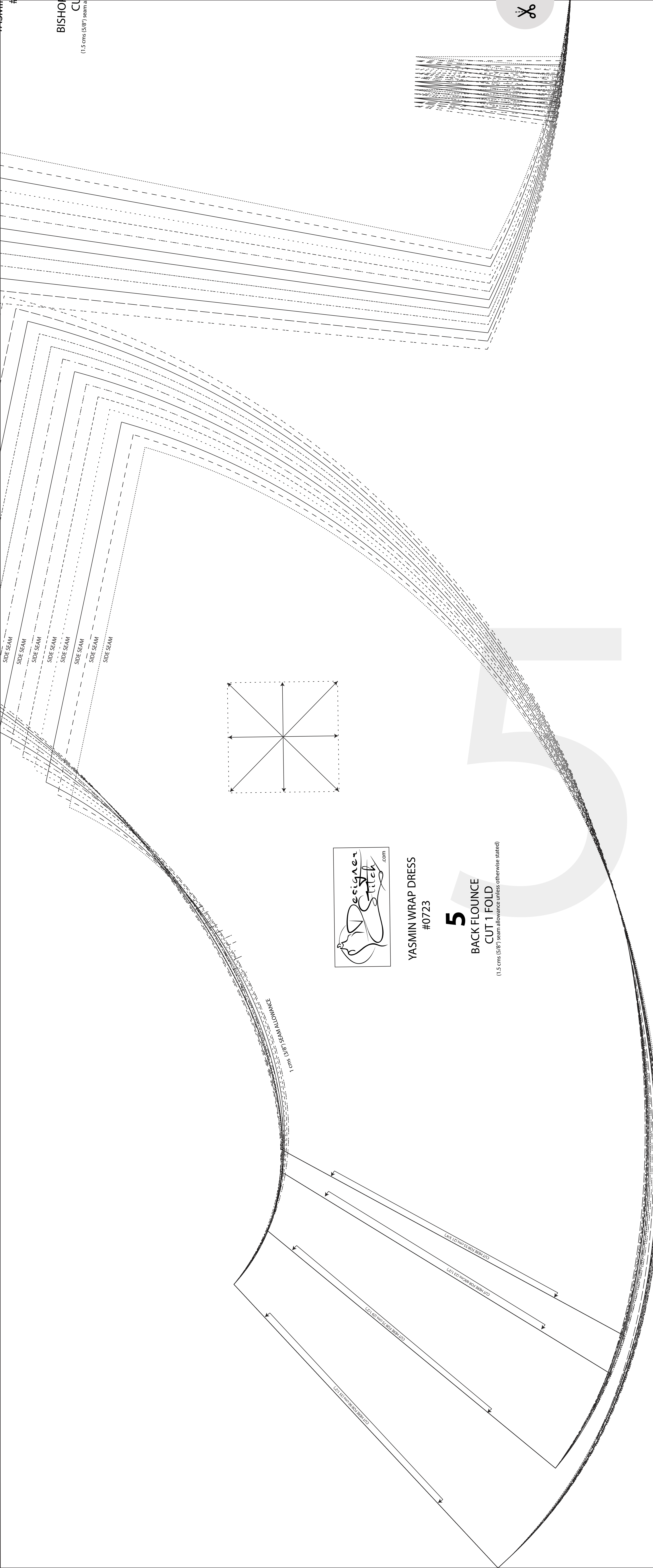
CUT HERE FOR 34 cm (13 3/8")

CUT HERE FOR 90 cm (35 1/2")

CUT HERE FOR 55 cm (21 3/4")



BISHOP
CUT
(1.5 cms (5/8") seam allowance)



YASMIN WRAP DRESS
#0723

5
BACK FLOUNCE
CUT 1 FOLD
(1.5 cms (5/8") seam allowance unless otherwise stated)

13
NECK BIND - CUP D
CUT 1
(6 mm (1/4") seam allowance unless otherwise stated)



YASMIN WRAP DRESS
#0723

YASMIN WRAP DRESS
#0723



8
LEFT WAIST TIE
CUT 1
(6 mm (1/4") seam allowance unless otherwise stated)

YASMIN WRAP DRESS
#0723



7
RIGHT WAIST TIE
CUT 1
(6 mm (1/4") seam allowance unless otherwise stated)

