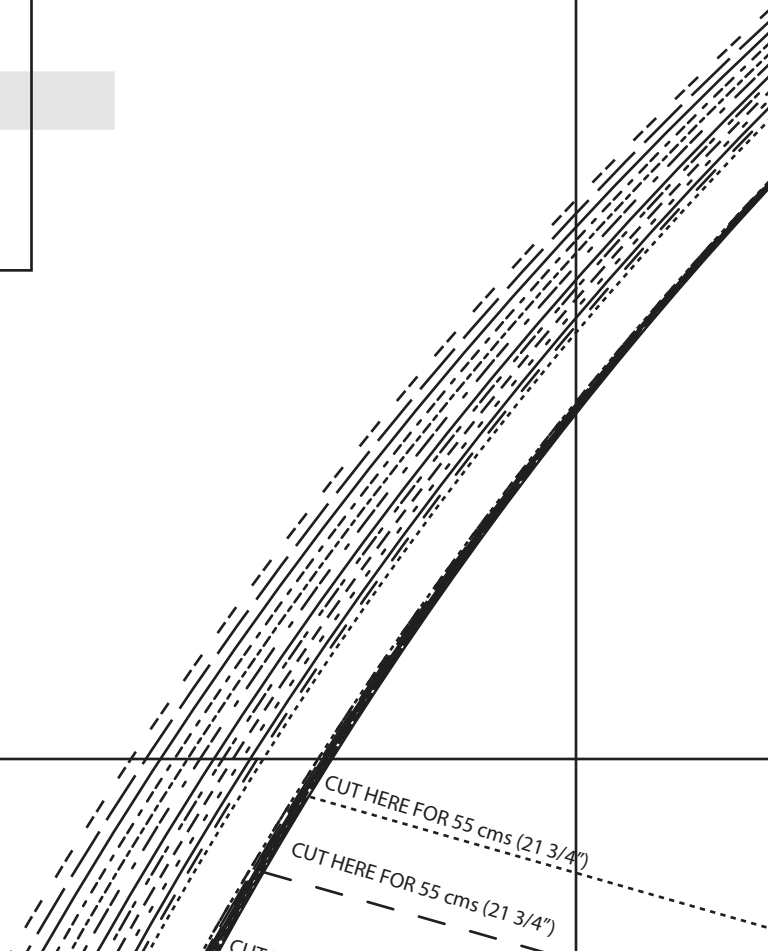
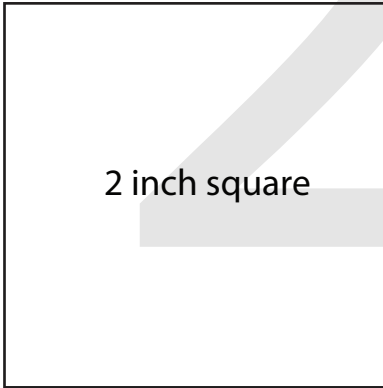
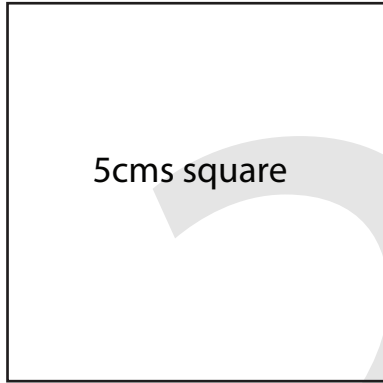


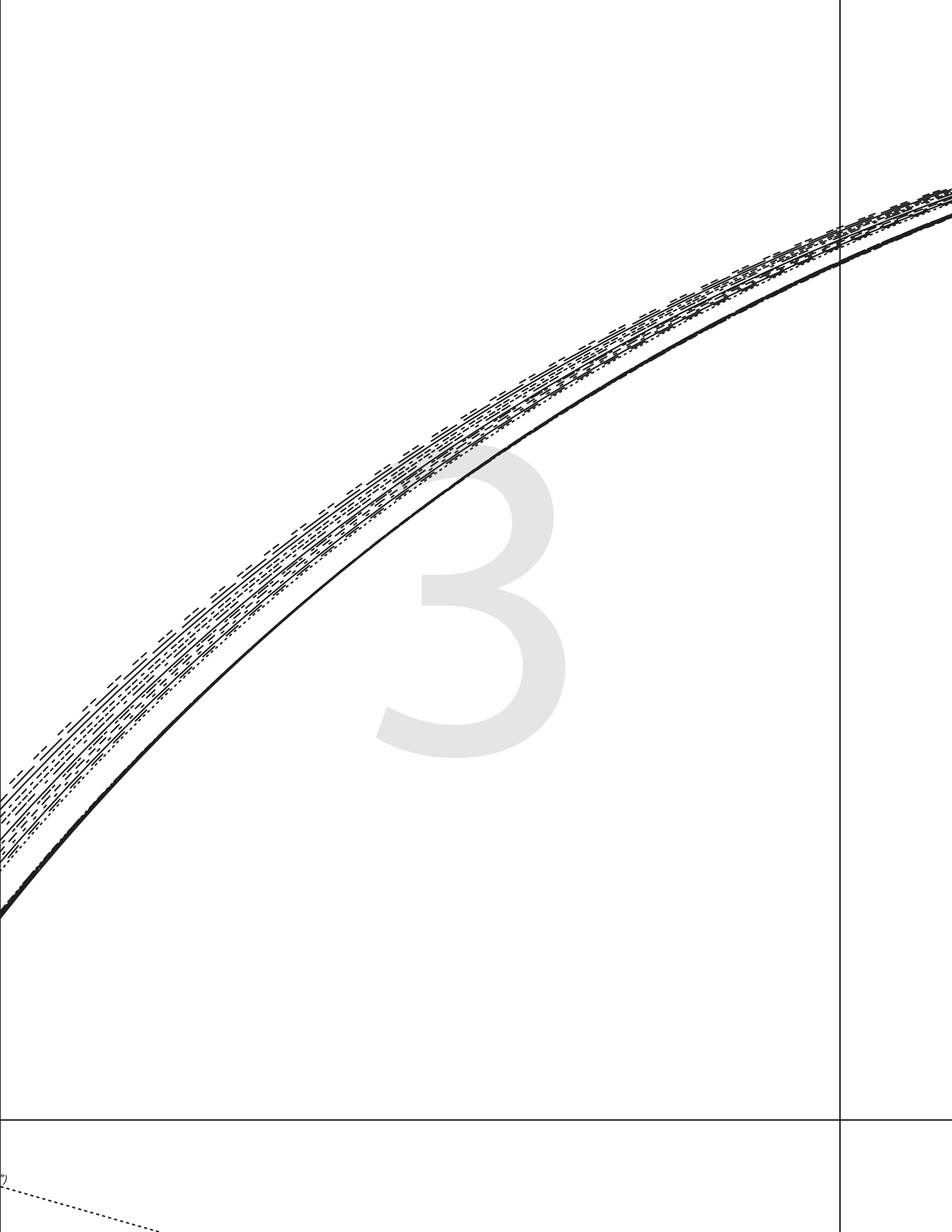
PRINT TILING TEMPLATE GUIDE FOR SIZE SPECIFIC CHOICE  
TRIMLESS PRINT AT HOME PATTERN



# YASMINE WRAP DRESS

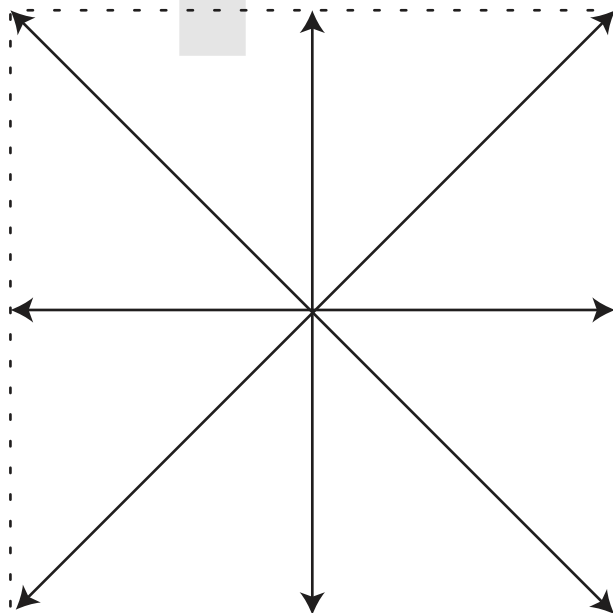
## #0723







4



(1.5 cms (5/8") seam allowance unless otherwise stated)

# FRONT FLOUNCE CUT 2

# 6

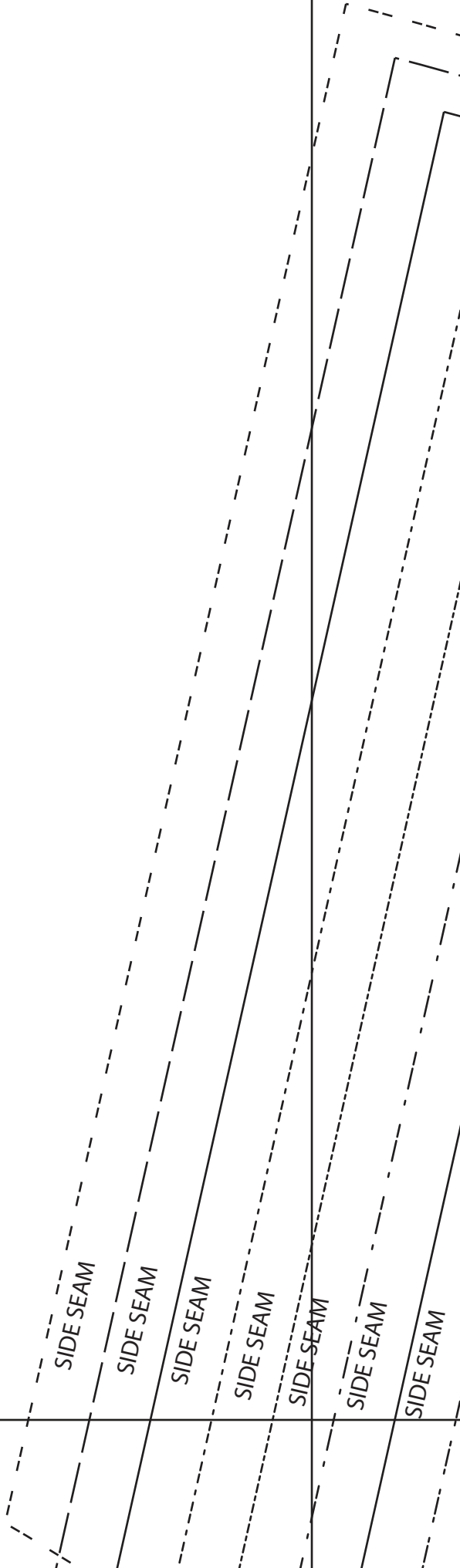
YASMIN WRAP DRESS  
#0723

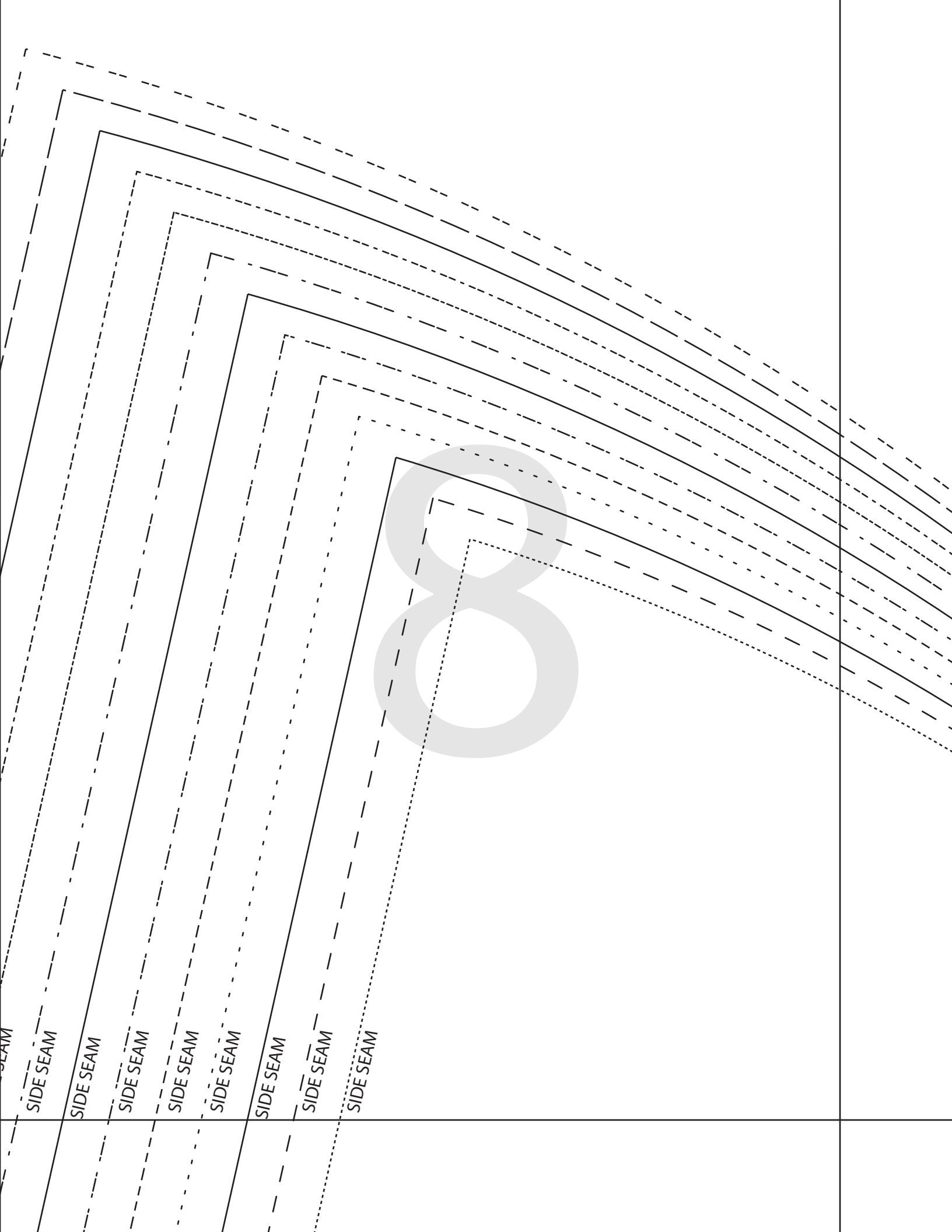


6

# SIZE KEY

- 1 .....  
2 - - - - -  
3 \_\_\_\_\_  
4 .....  
5 - - - - -  
6 - - - - -
- 7 - - - - -
- 8 - - - - -
- 9 .....  
10 - - - - -  
11 \_\_\_\_\_  
12 - - - - -  
13 .....  
14 - - - - -





SEAM

SIDE SEAM

SIDE SEAM

SIDE SEAM

SIDE SEAM

SIDE SEAM

SIDE SEAM

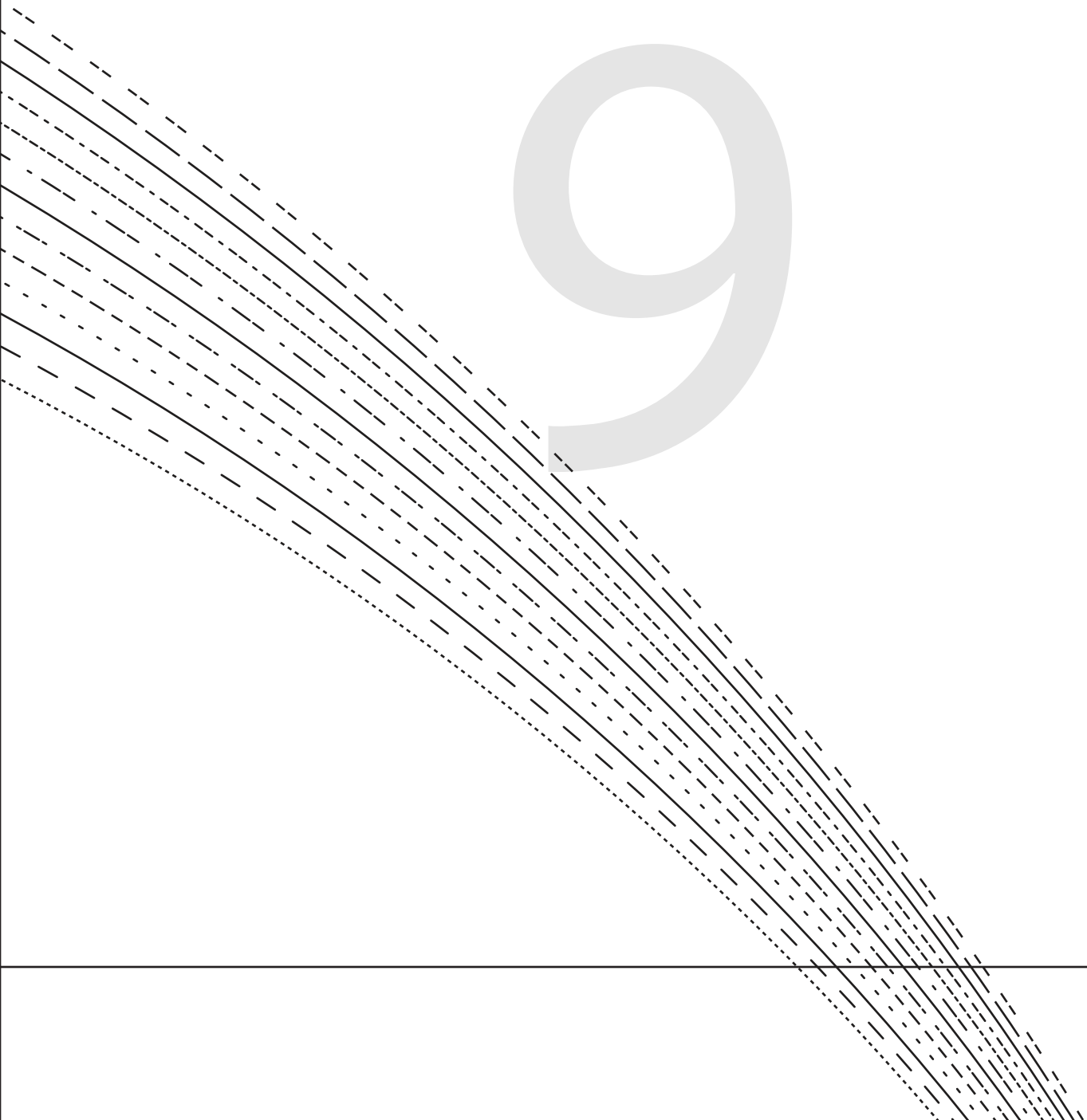
SIDE SEAM

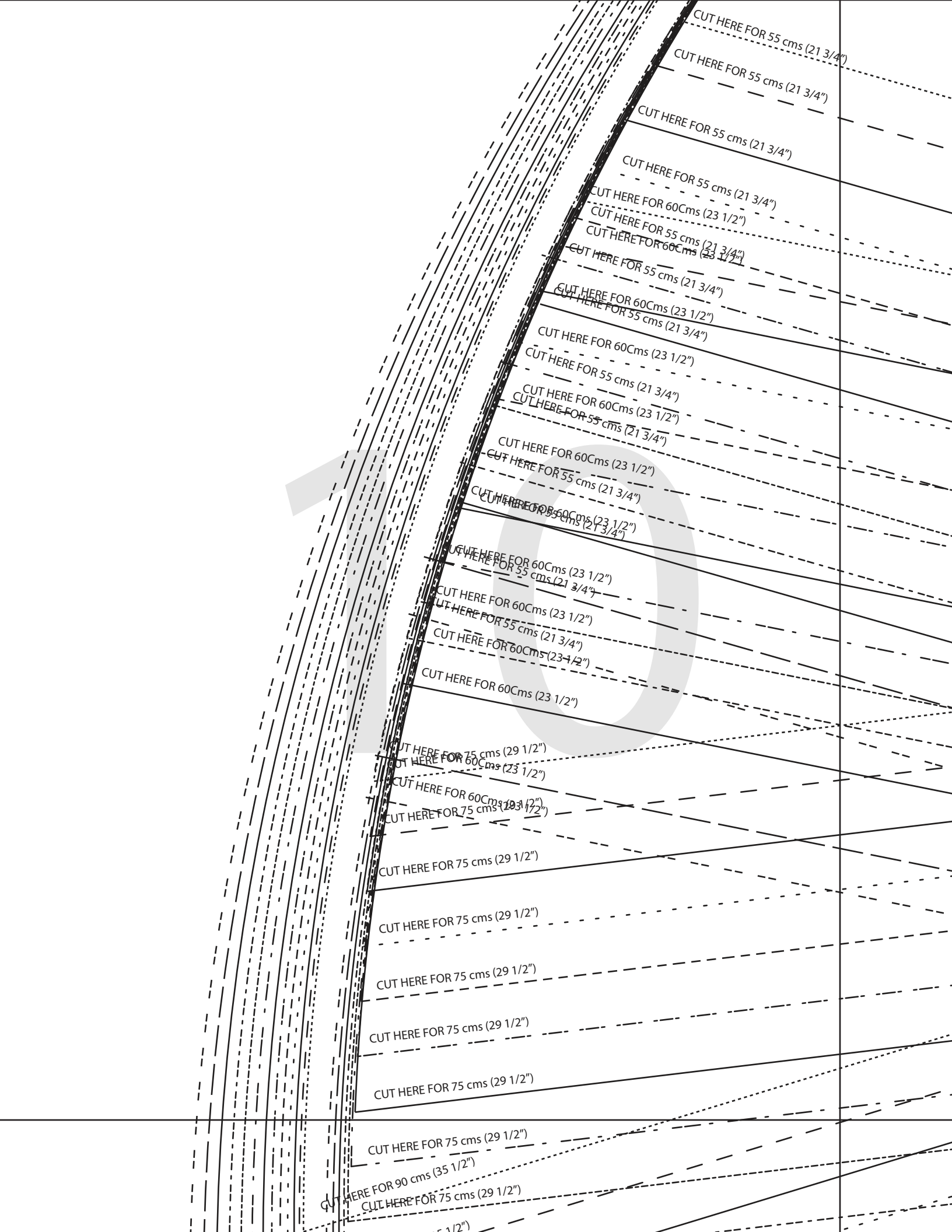
SIDE SEAM

8



9





CUT HERE FOR 55 cms (21 3/4")

CUT HERE FOR 55 cms (21 3/4")

CUT HERE FOR 55 cms (21 3/4")

CUT HERE FOR 55 cms (21 3/4")

CUT HERE FOR 60Cms (23 1/2")

CUT HERE FOR 55 cms (21 3/4")

CUT HERE FOR 60Cms (23 1/2")

CUT HERE FOR 55 cms (21 3/4")

CUT HERE FOR 60Cms (23 1/2")

CUT HERE FOR 55 cms (21 3/4")

CUT HERE FOR 60Cms (23 1/2")

CUT HERE FOR 55 cms (21 3/4")

CUT HERE FOR 60Cms (23 1/2")

CUT HERE FOR 55 cms (21 3/4")

CUT HERE FOR 60Cms (23 1/2")

CUT HERE FOR 55 cms (21 3/4")

CUT HERE FOR 60Cms (23 1/2")

CUT HERE FOR 55 cms (21 3/4")

CUT HERE FOR 60Cms (23 1/2")

CUT HERE FOR 75 cms (29 1/2")

CUT HERE FOR 60Cms (23 1/2")

CUT HERE FOR 60Cms (23 1/2")

CUT HERE FOR 75 cms (29 1/2")

CUT HERE FOR 75 cms (29 1/2")

CUT HERE FOR 75 cms (29 1/2")

CUT HERE FOR 75 cms (29 1/2")

CUT HERE FOR 75 cms (29 1/2")

CUT HERE FOR 75 cms (29 1/2")

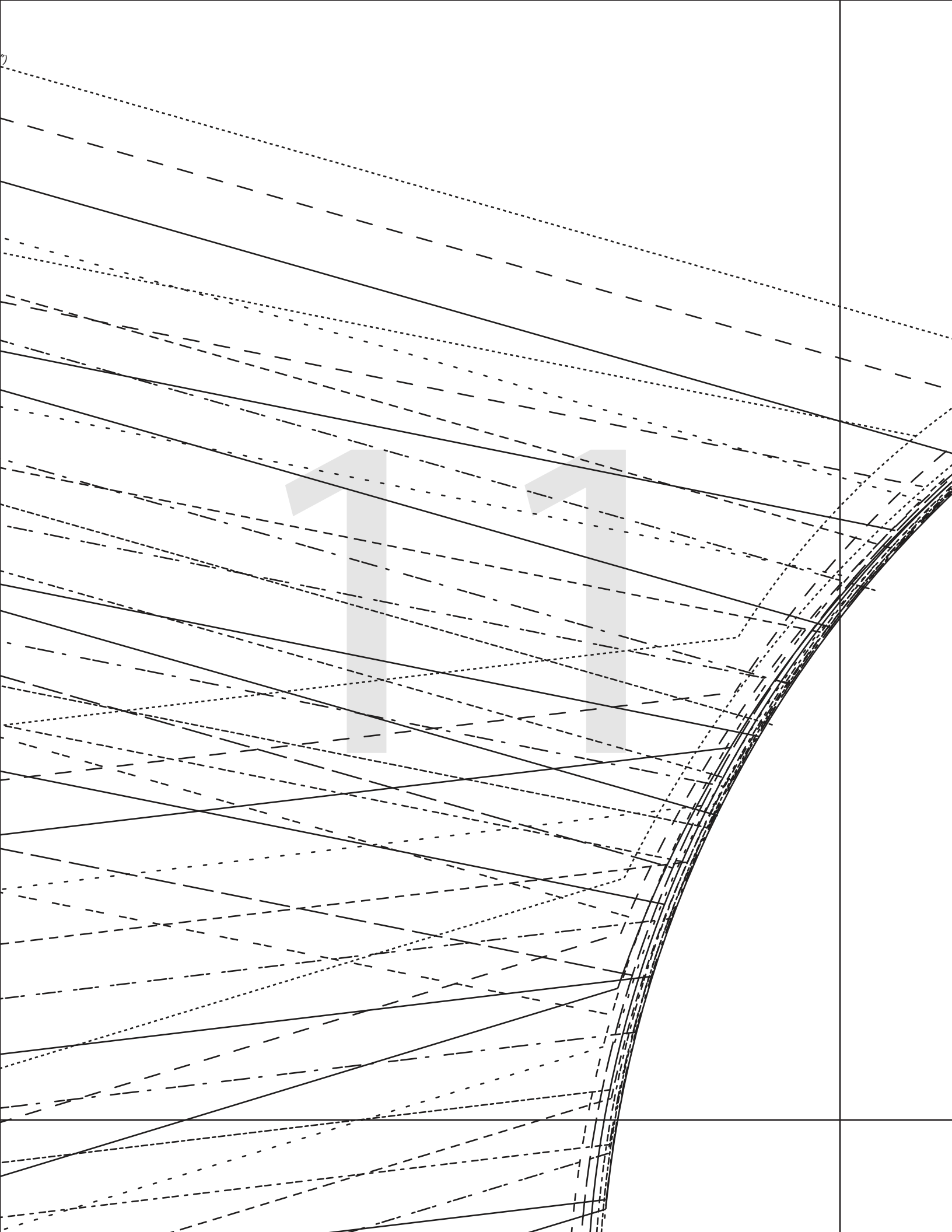
CUT HERE FOR 75 cms (29 1/2")

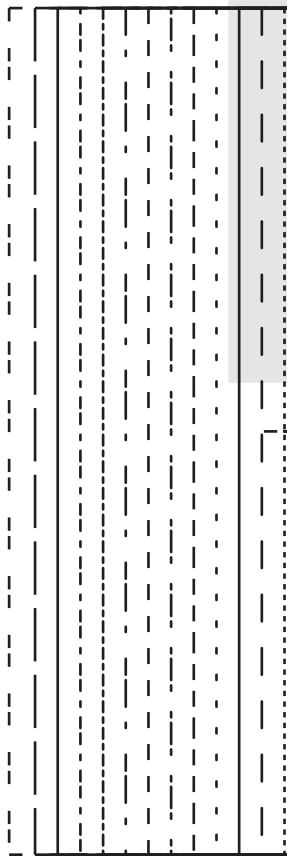
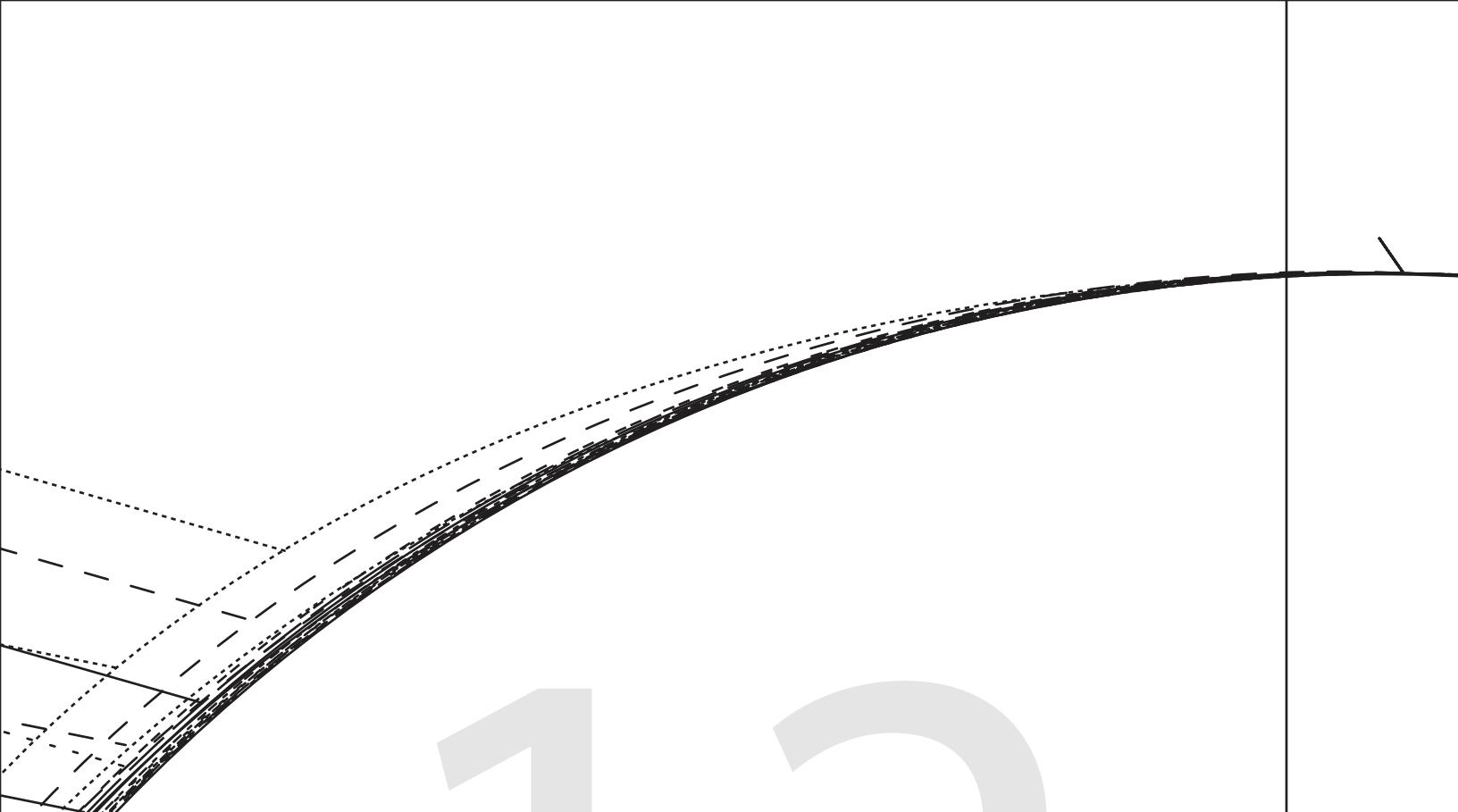
CUT HERE FOR 75 cms (29 1/2")

CUT HERE FOR 90 cms (35 1/2")

CUT HERE FOR 75 cms (29 1/2")

CUT HERE FOR 75 cms (29 1/2")



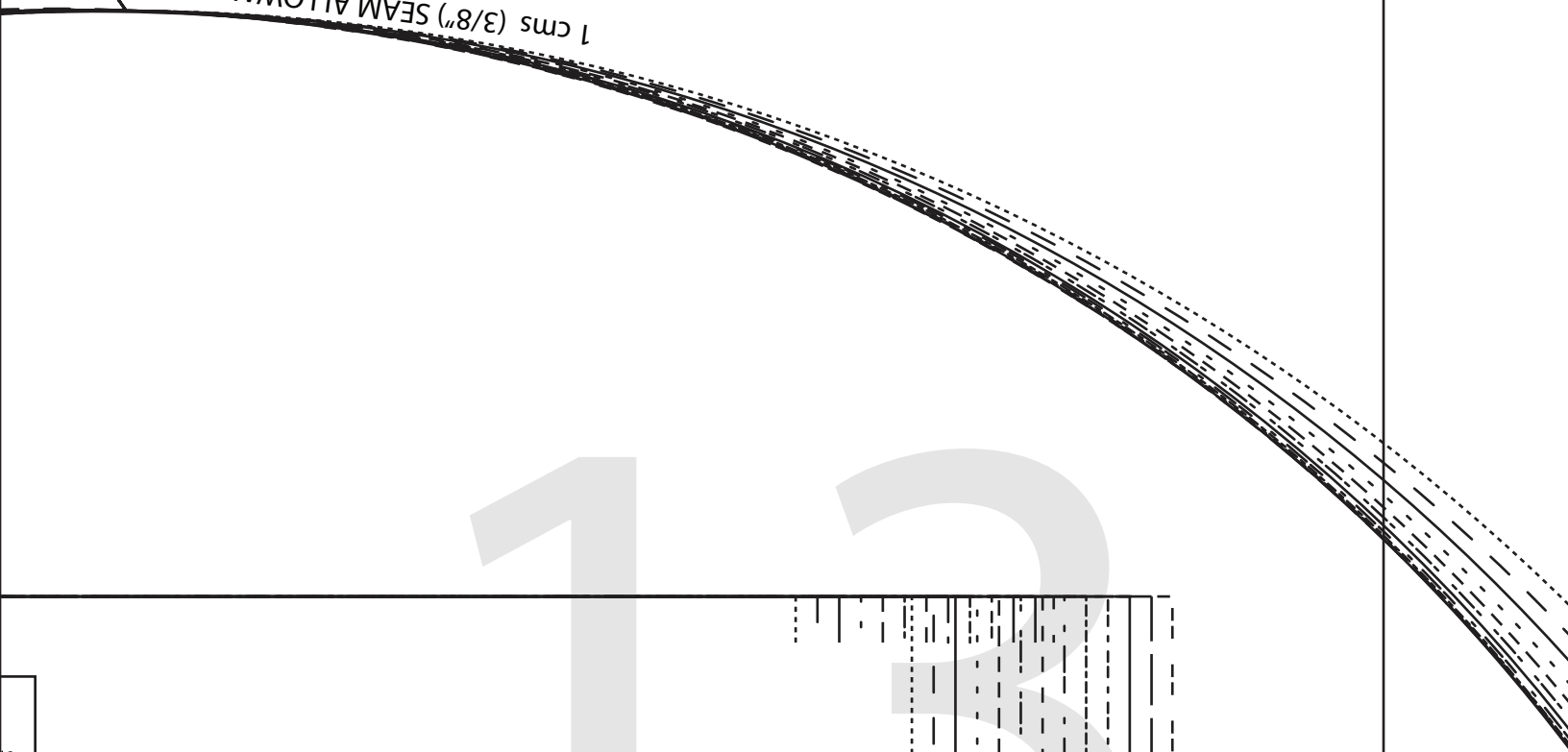


YASMIN WRAP DRESS  
#0723

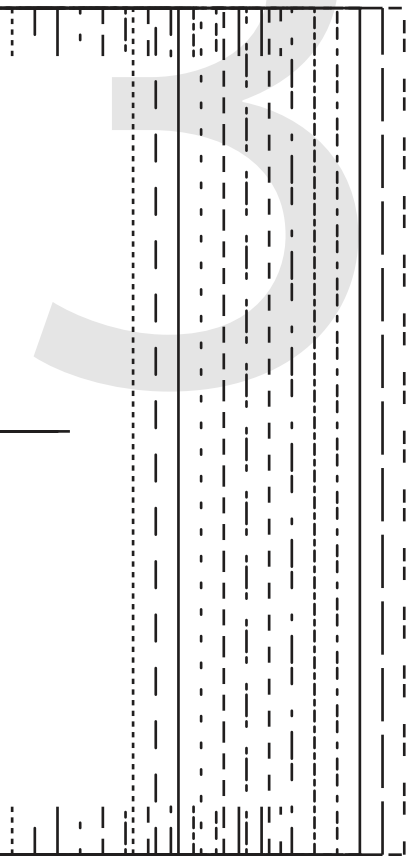
**10**  
CUFF

CUT 2 - MAIN/INTERFACING  
(1.5 cms (5/8") seam allowance unless otherwise stated)

1 cms (3/8") SEAM ALLOWANCE

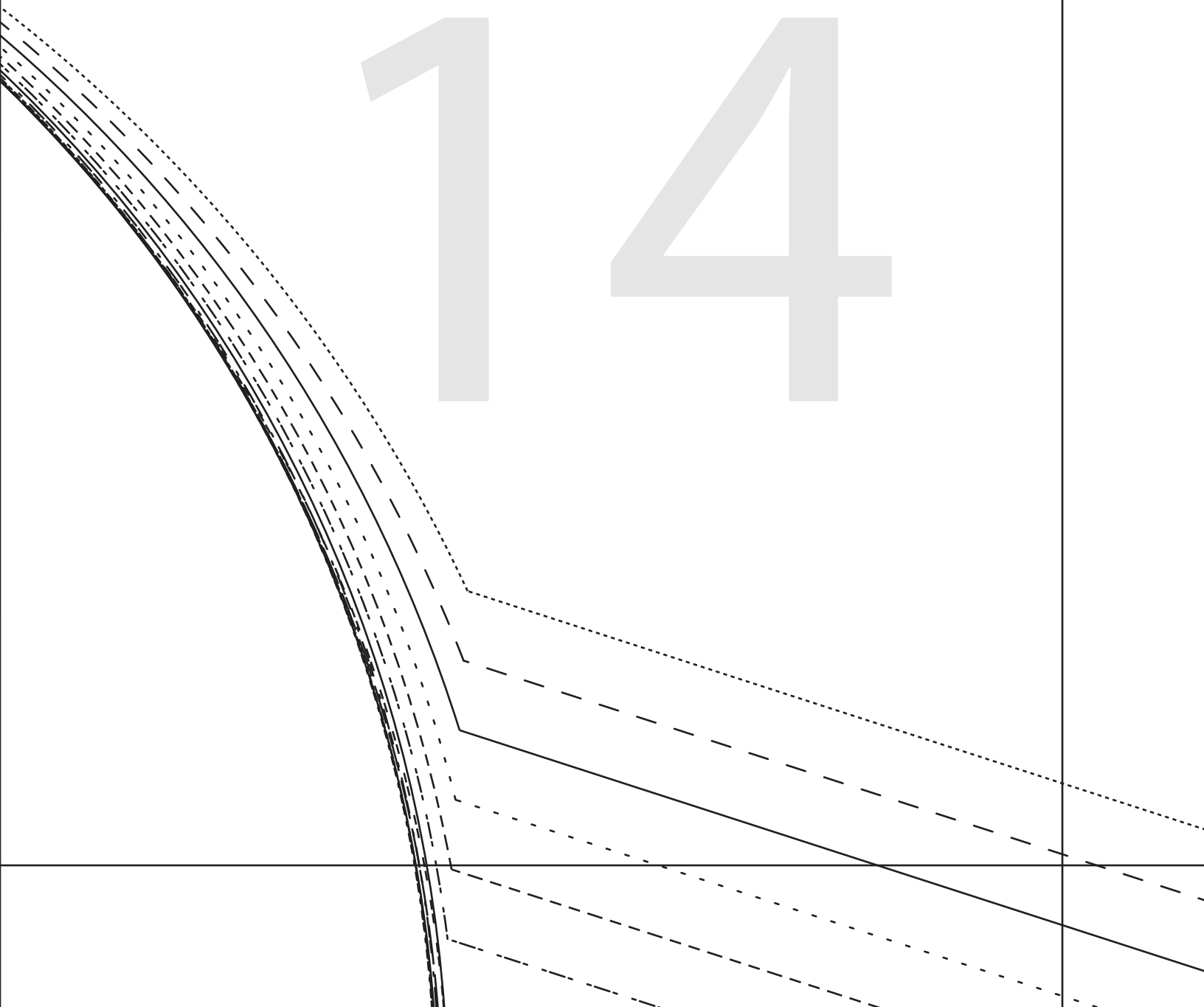


m



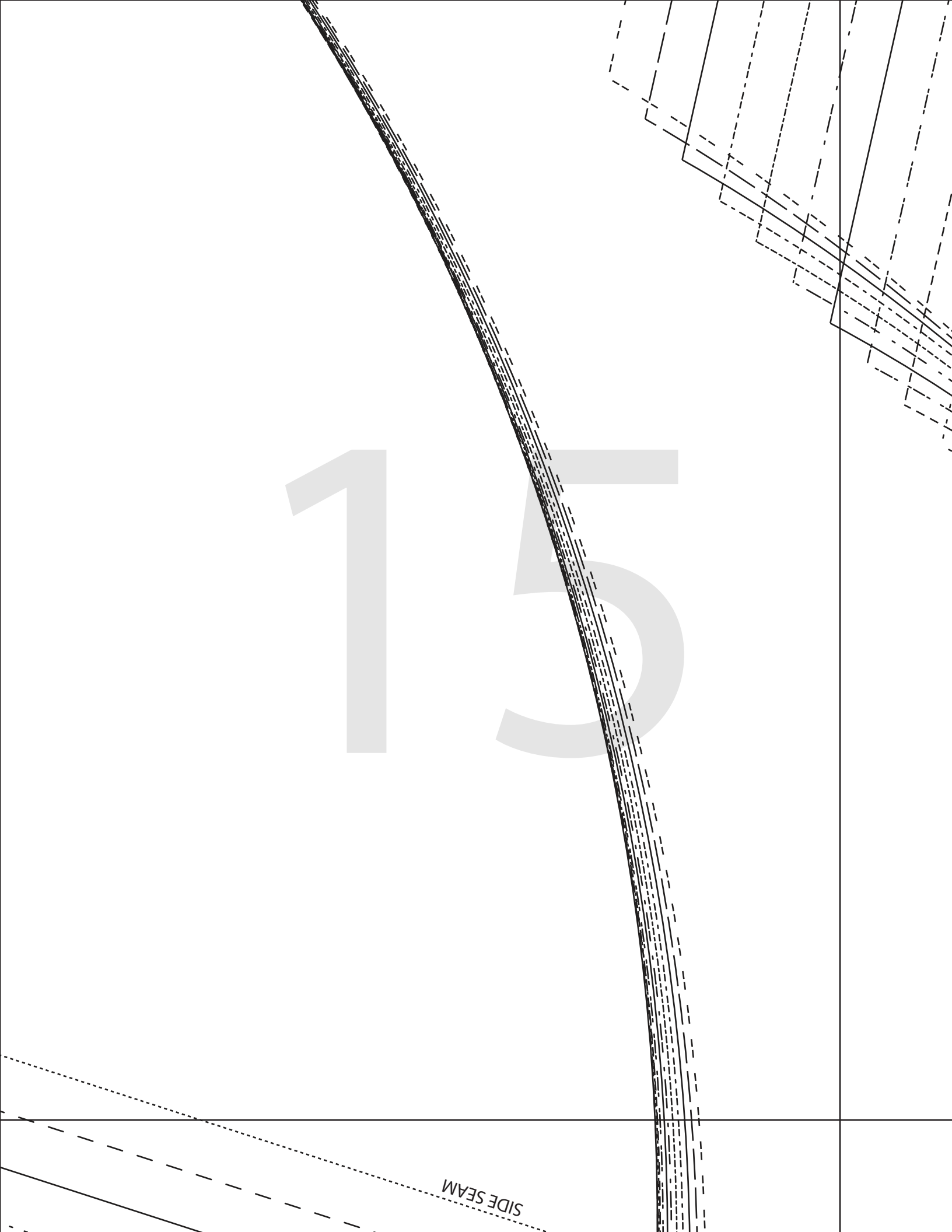
13

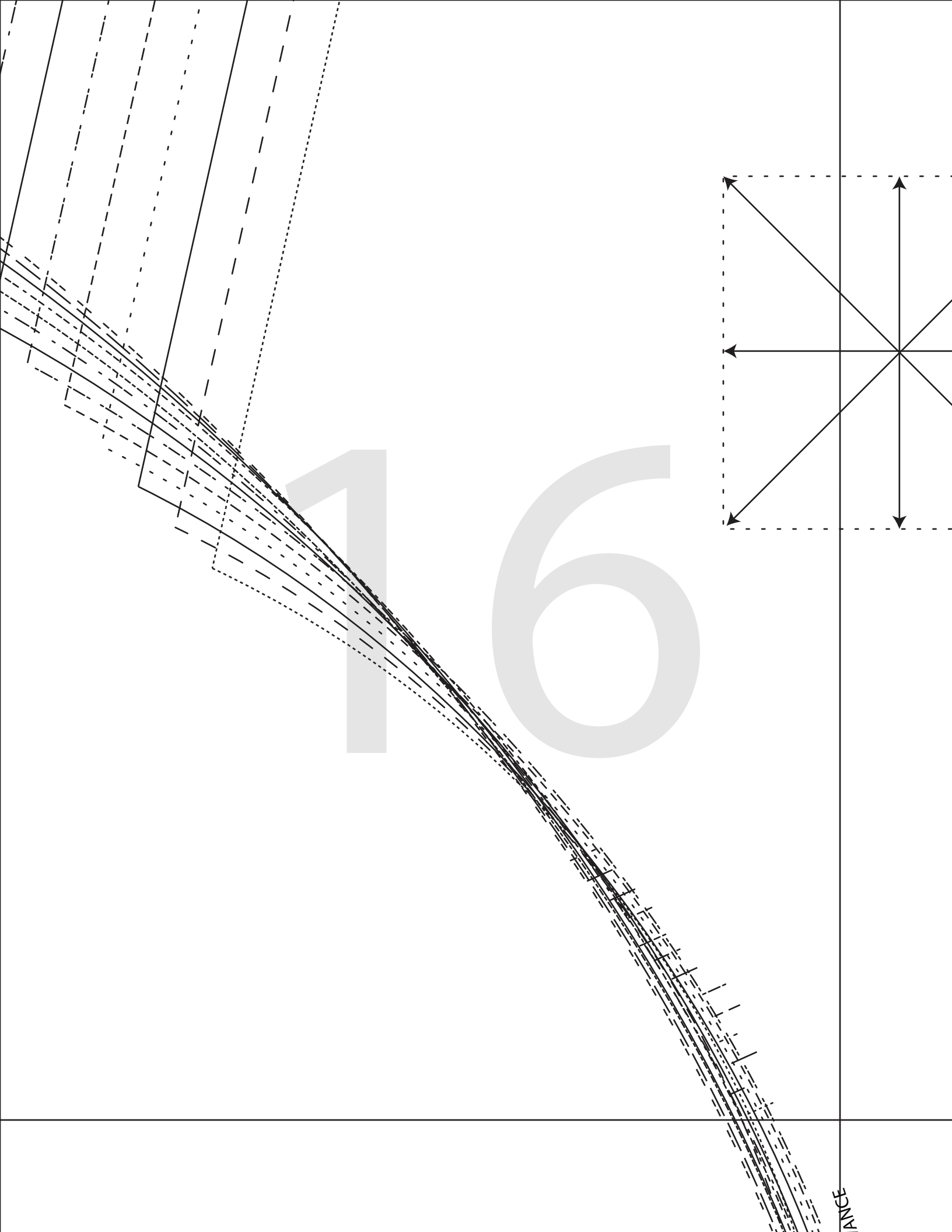
14



15

SIDE SEAM





16

ANGLE





# YASMIN WRAP DRESS

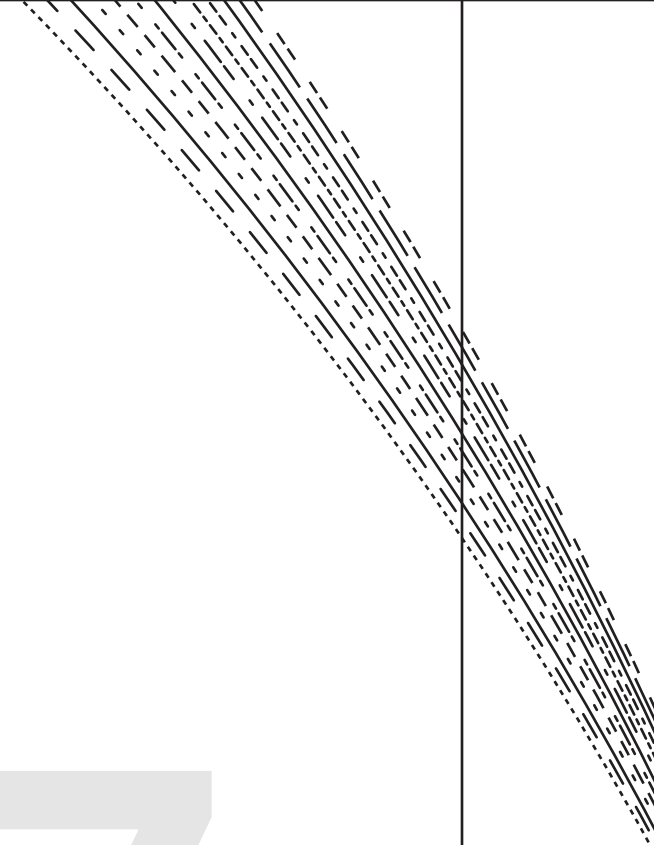
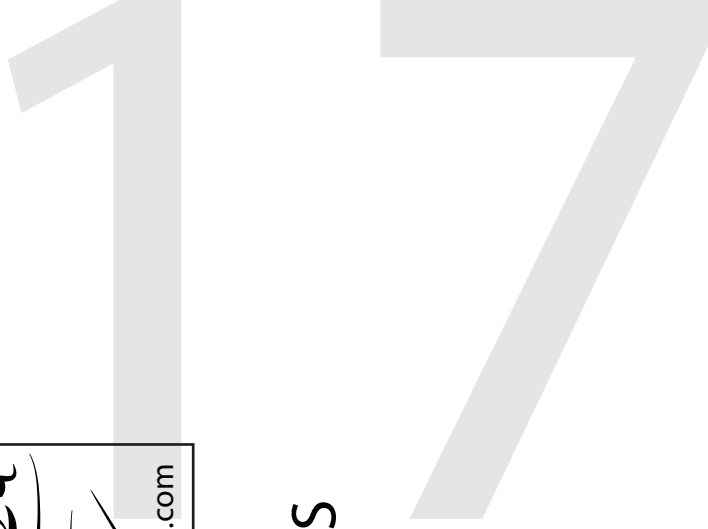
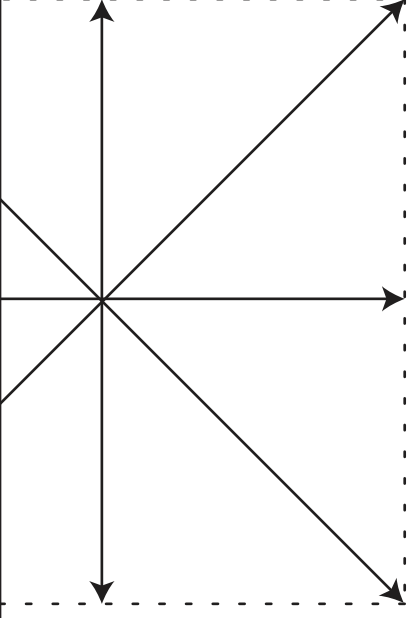
#0723

# 5

## BACK FLOUNCE

## CUT 1 FOLD

(1.5 cms (5/8") seam allowance unless otherwise stated)





18

CUT HERE FOR 75 cms (29 1/2")

CUT HERE FOR 90 cms (35 1/2")

CUT HERE FOR 75 cms (29 1/2")

CUT HERE FOR 90 cms (35 1/2")

CUT HERE FOR 75 cms (29 1/2")

CUT HERE FOR 90 cms (35 1/2")

CUT HERE FOR 75 cms (29 1/2")

CUT HERE FOR 90 cms (35 1/2")

CUT HERE FOR 75 cms (29 1/2")

CUT HERE FOR 90 cms (35 1/2")

CUT HERE FOR 75 cms (29 1/2")

CUT HERE FOR 90 cms (35 1/2")

CUT HERE FOR 90 cms (35 1/2")

CUT HERE FOR 90 cms (35 1/2")

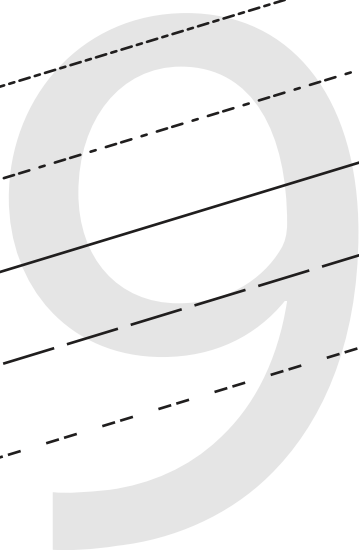
CUT HERE FOR 90 cms (35 1/2")

CUT HERE FOR 90 cms (35 1/2")

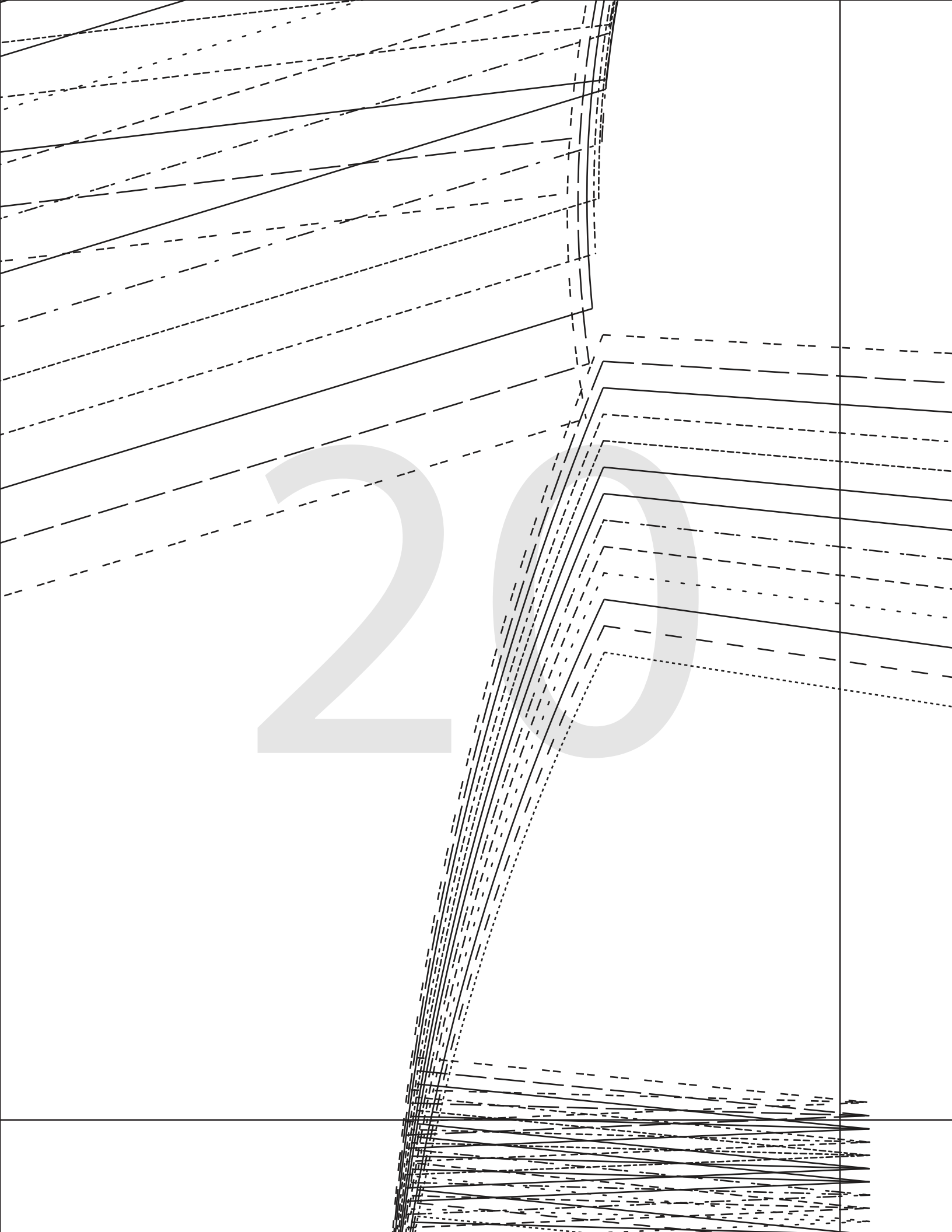
CUT HERE FOR 90 cms (35 1/2")

CUT HERE FOR 90 cms (35 1/2")

CUT HERE FOR 90 cms (35 1/2")



20

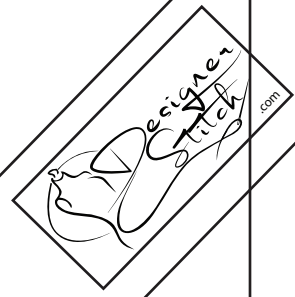
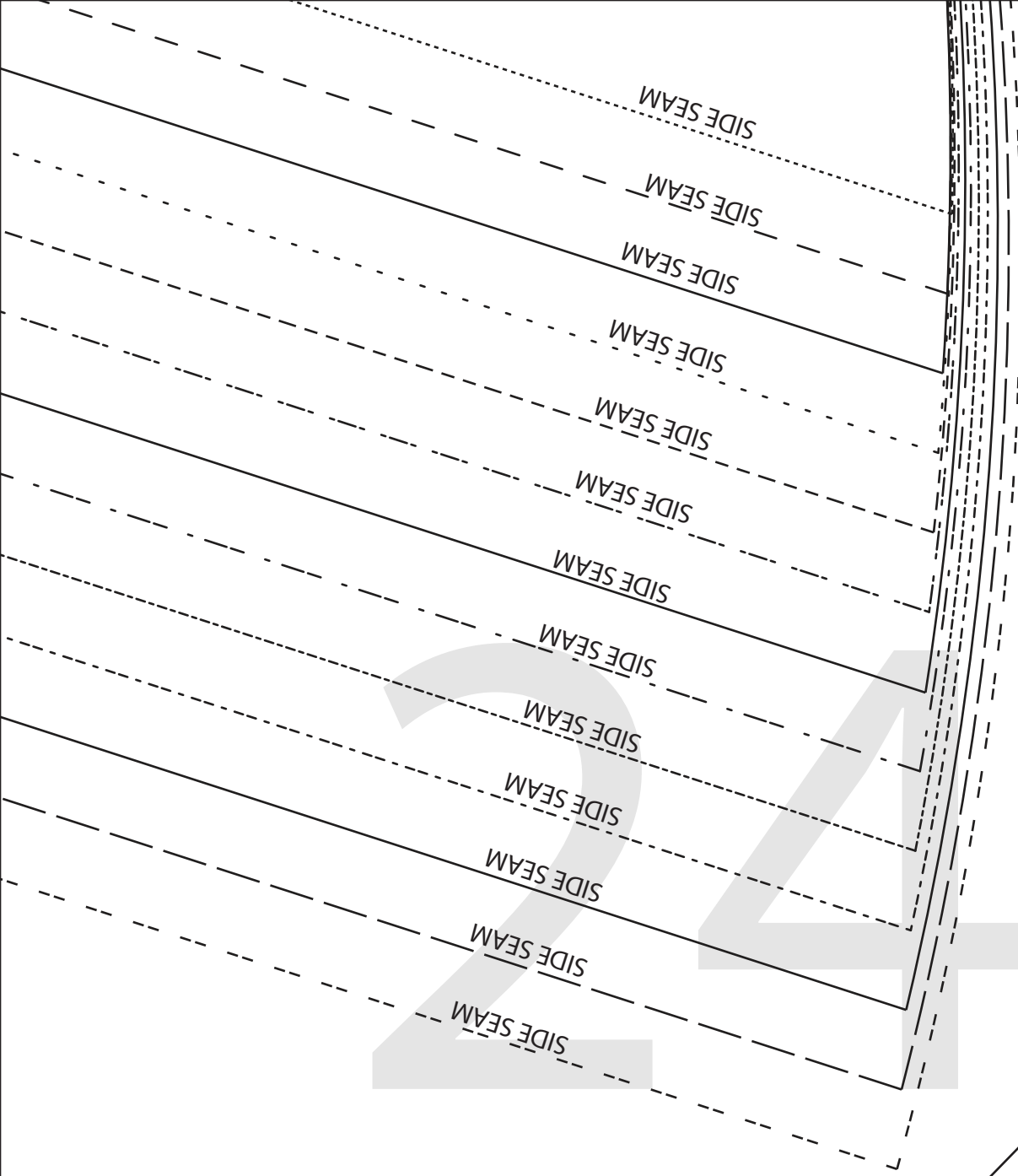


2

1

22

23



YASMIN WRAP DRESS  
#0723  
11  
PL  
6mm 1/4"



YASMIN WRAP DRESS  
#0723

**11**  
PLACKET  
CUT 2

(6mm (1/4") seam allowance unless otherwise stated)



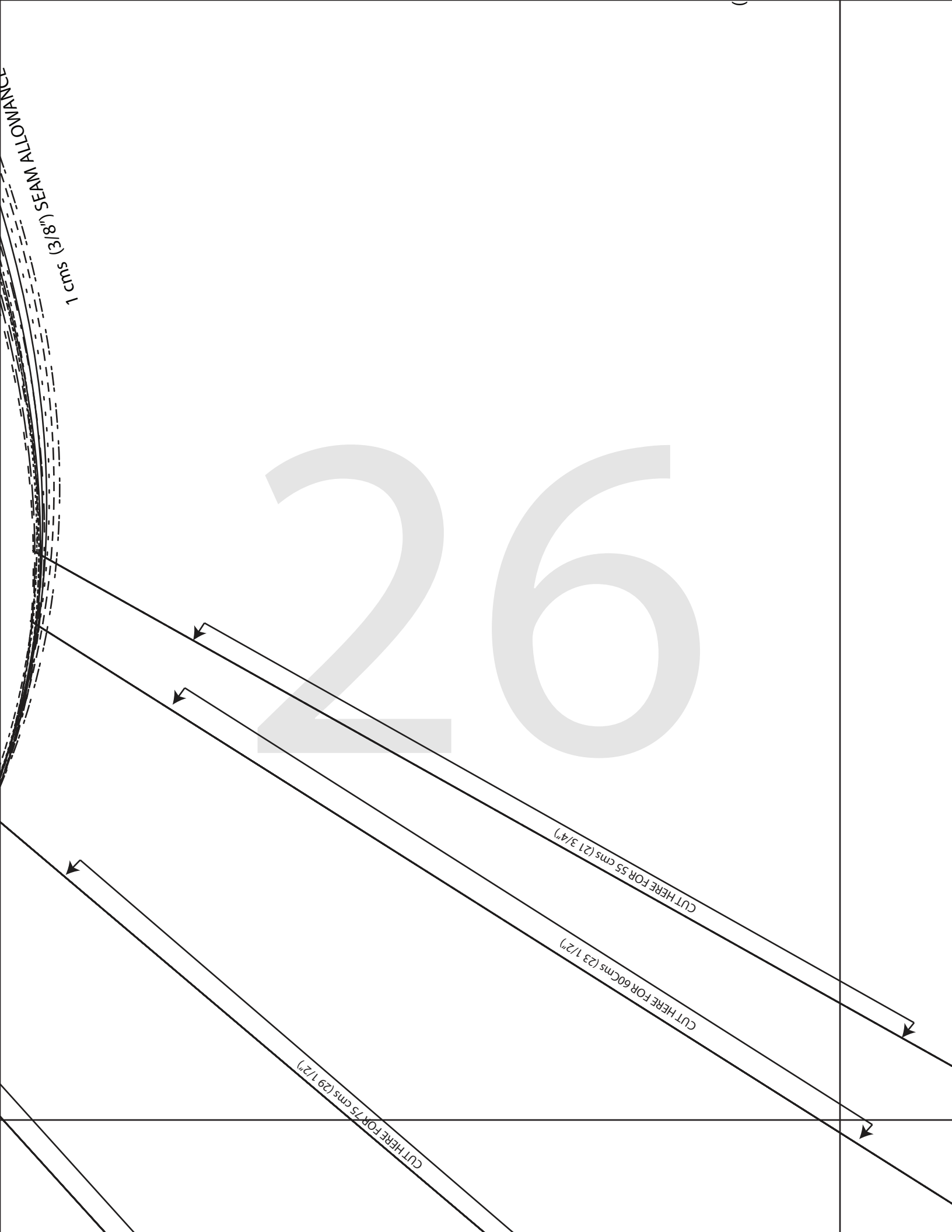
25

EMVANCE  
SEAM ALLOWANCE (3/8") (1 cm)

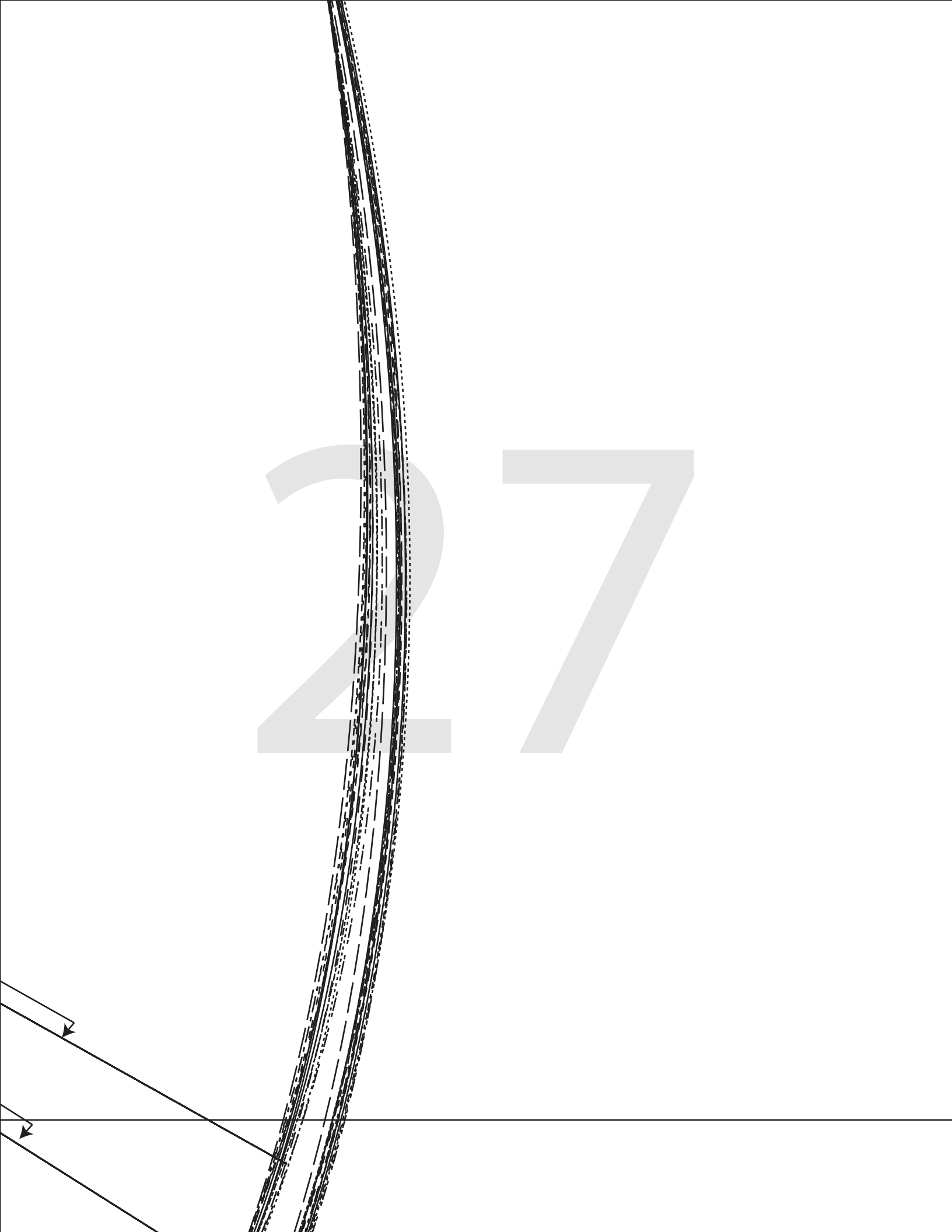


1 cm (3/8") SEAM ALLOWANCE

26

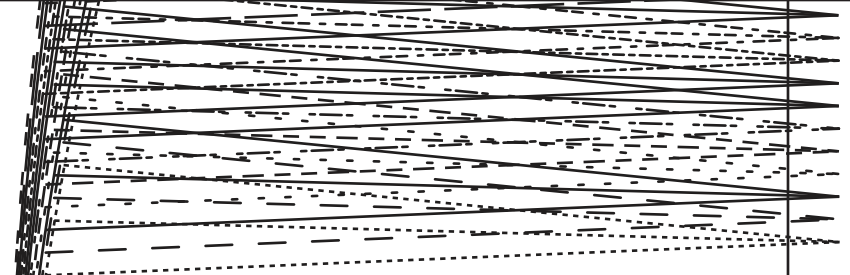


27



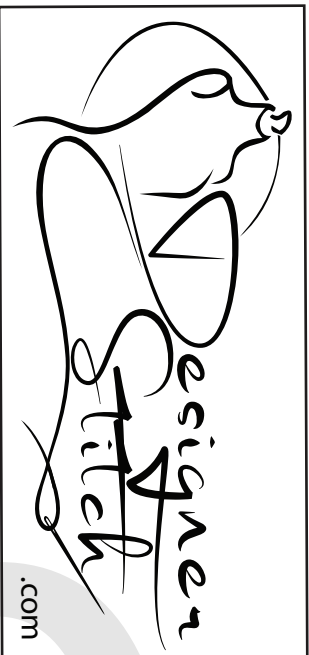
6mm (1/4") SEAM ALLOWANCE

28





29



YASMIN WRAP DRESS

#0723

**9**

BISHOP SLEEVE

CUT 2

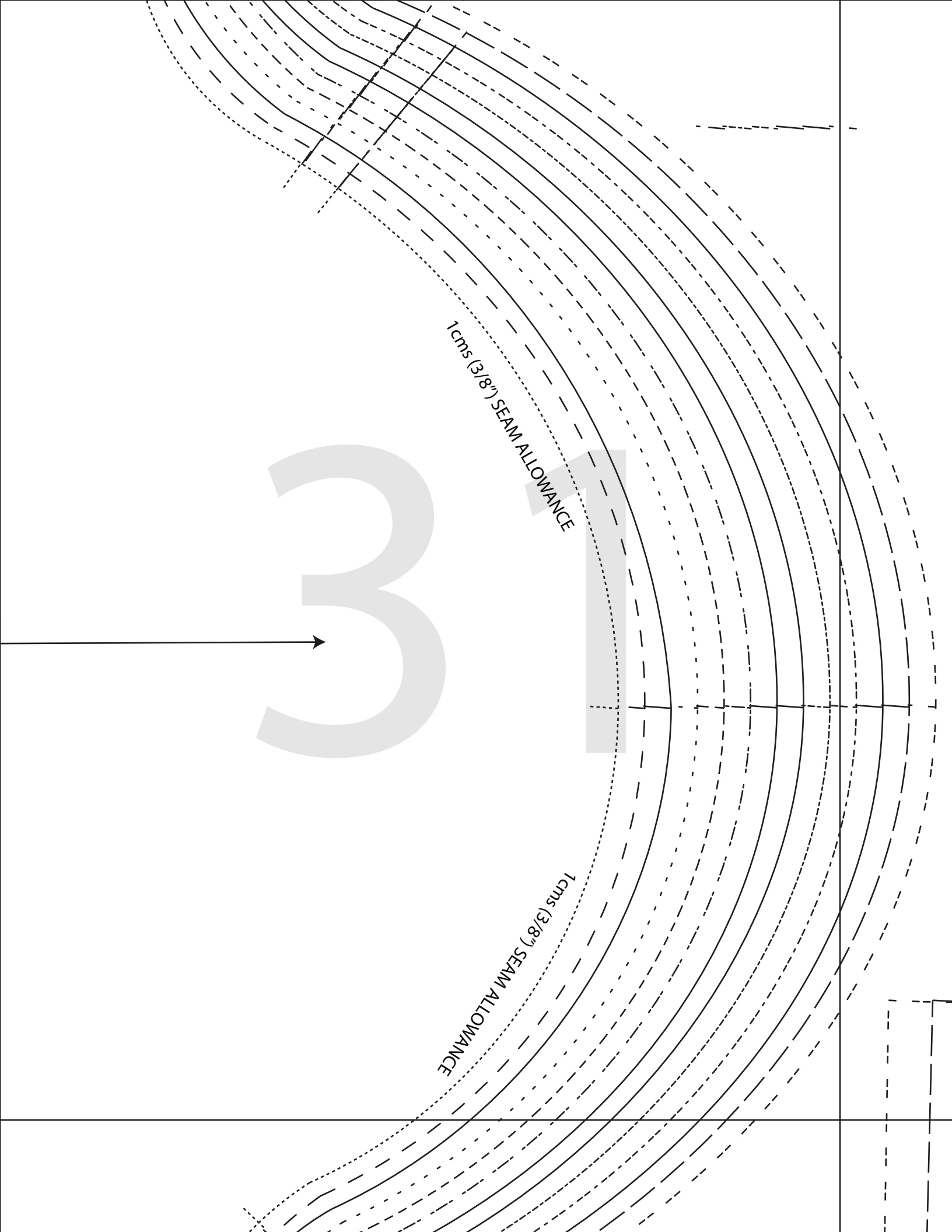
(1.5 cms (5/8") seam allowance unless otherwise stated)

3

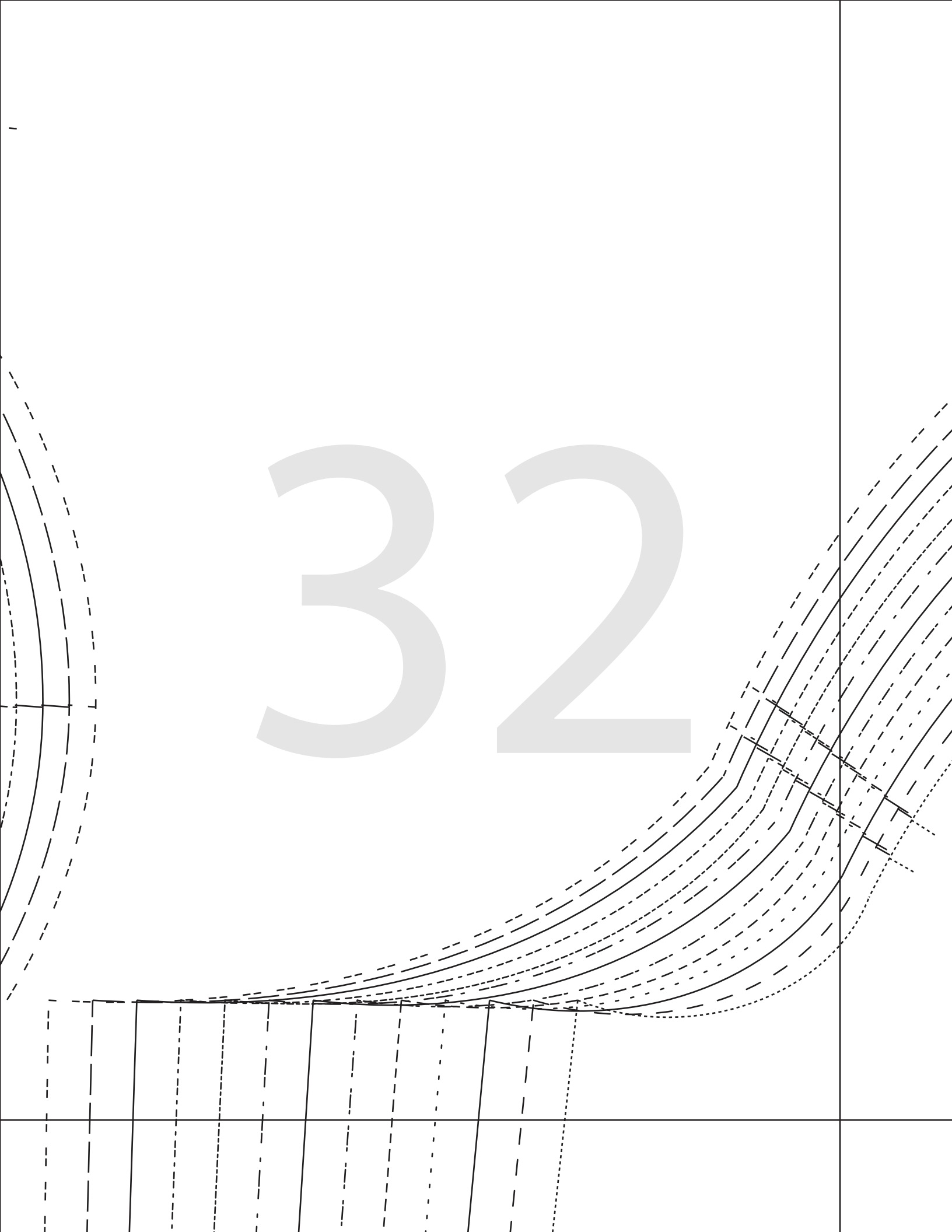
1

1cms (3/8") SEAM ALLOWANCE

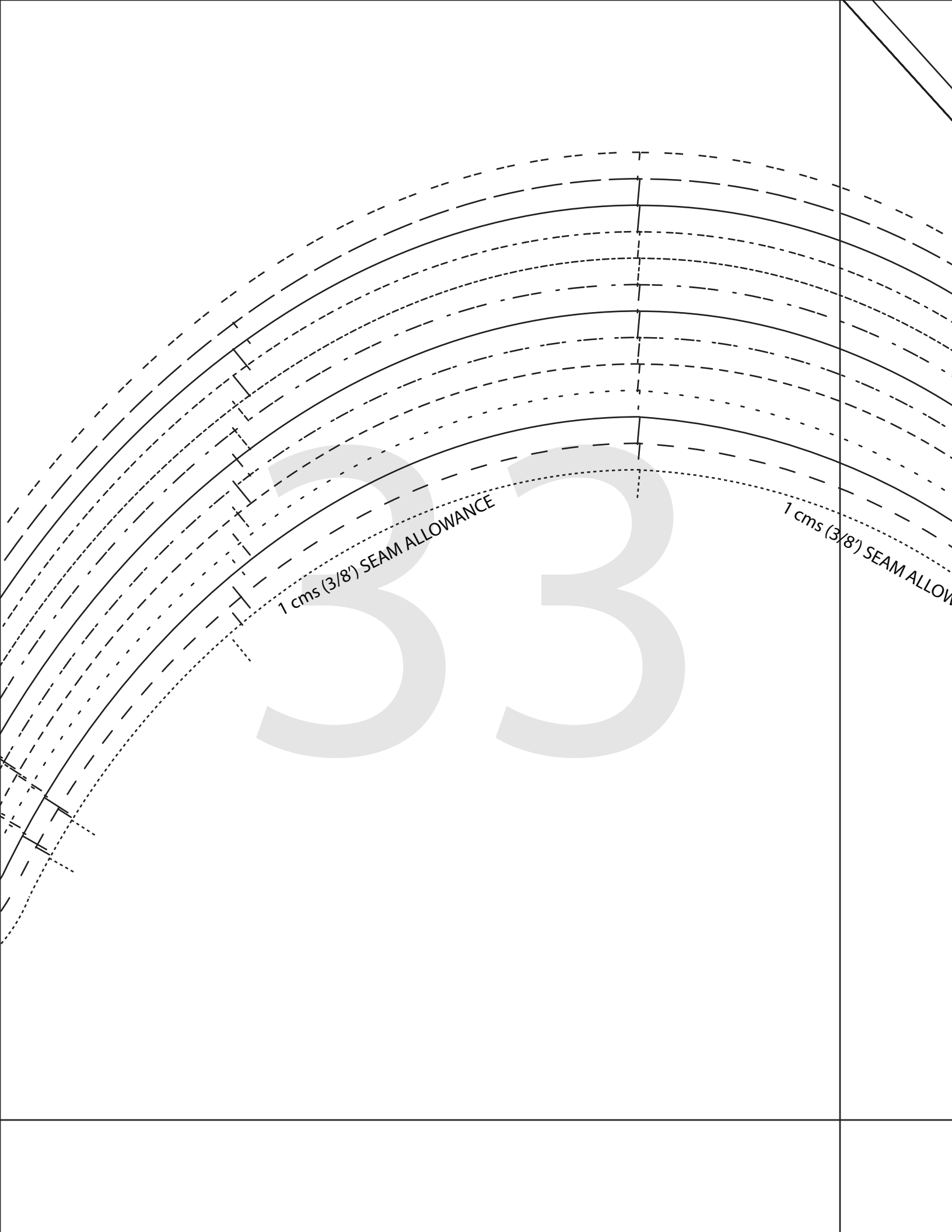
1cms (3/8") SEAM ALLOWANCE



32



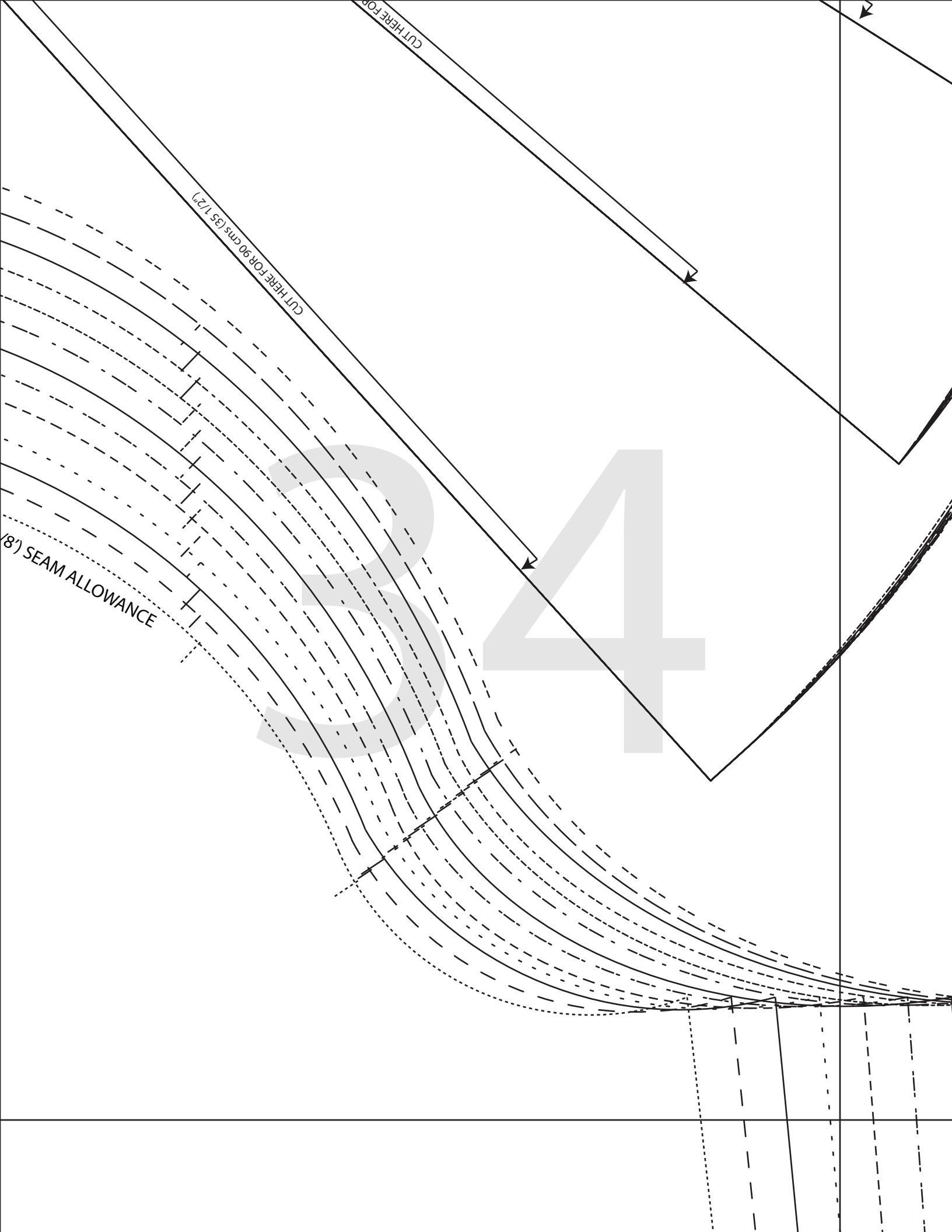




1 cms (3/8') SEAM ALLOWANCE

1 cms (3/8') SEAM ALLOW

33



CUT HERE FOR

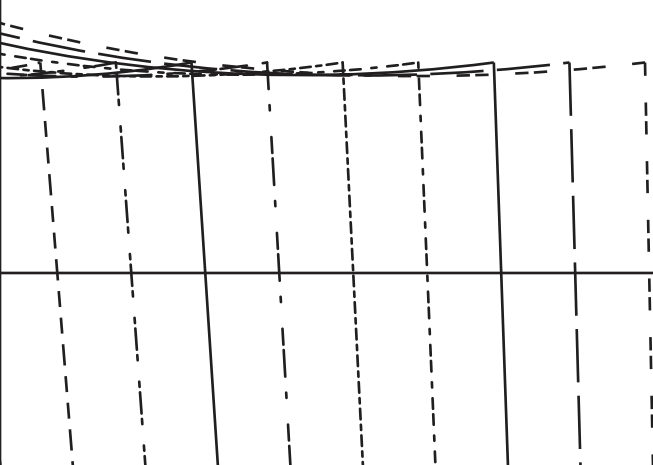
CUT HERE FOR 90 cms (35 1/2")

1/8" SEAM ALLOWANCE

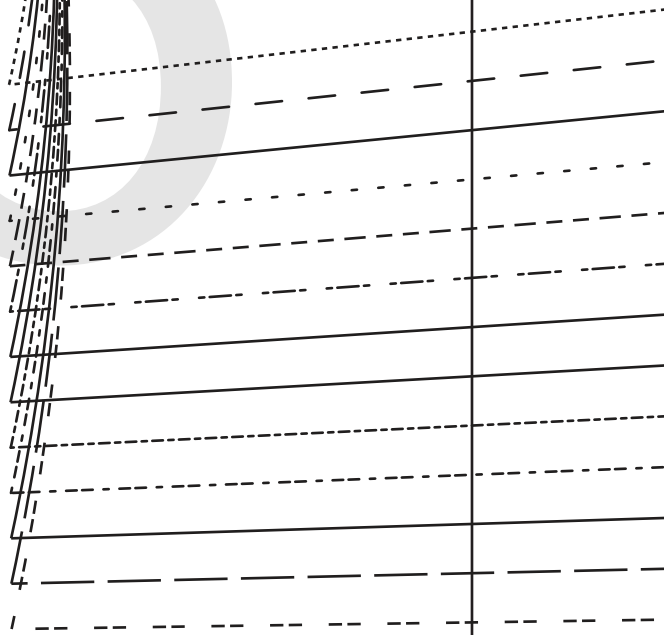
34



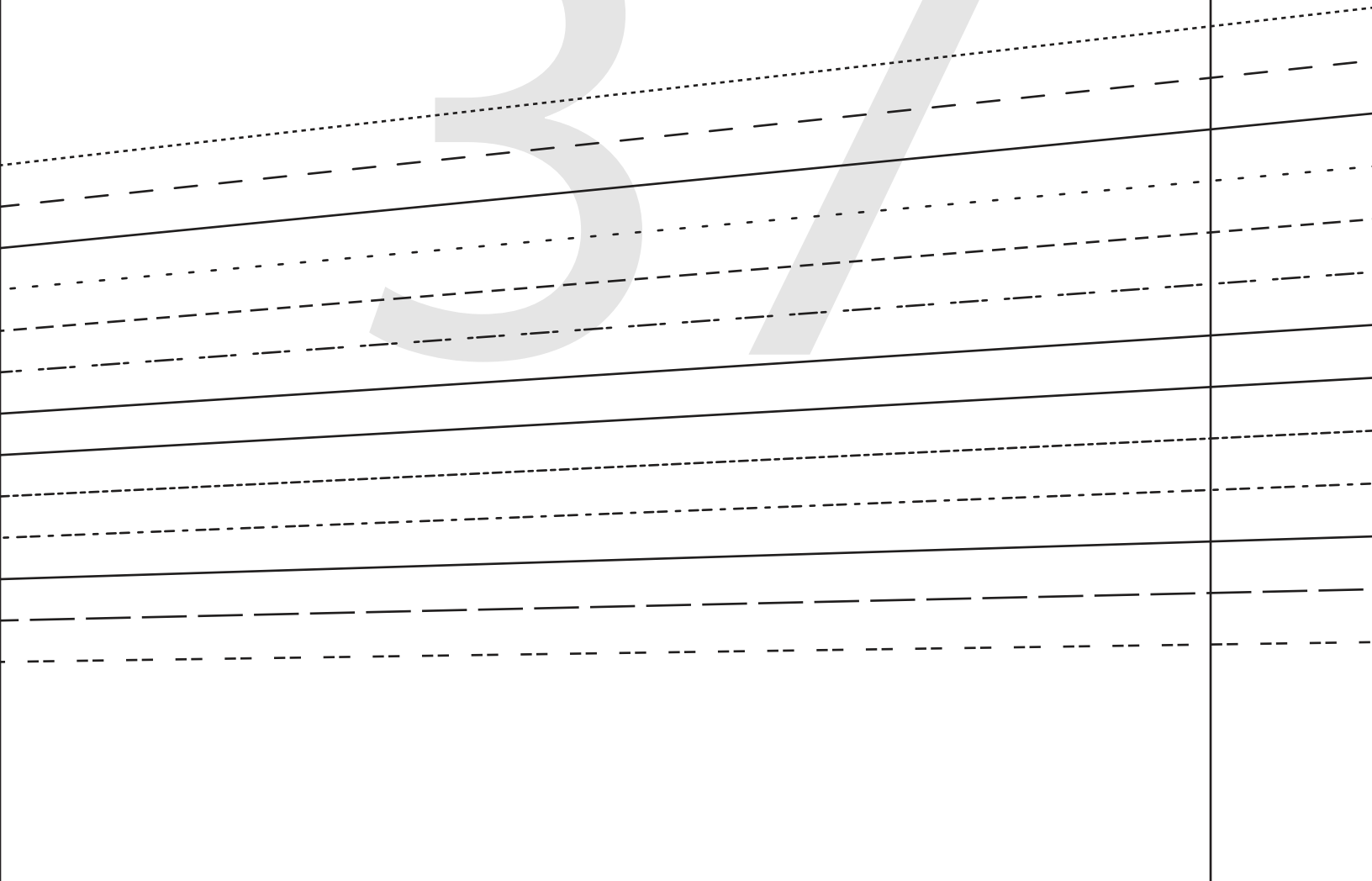
35



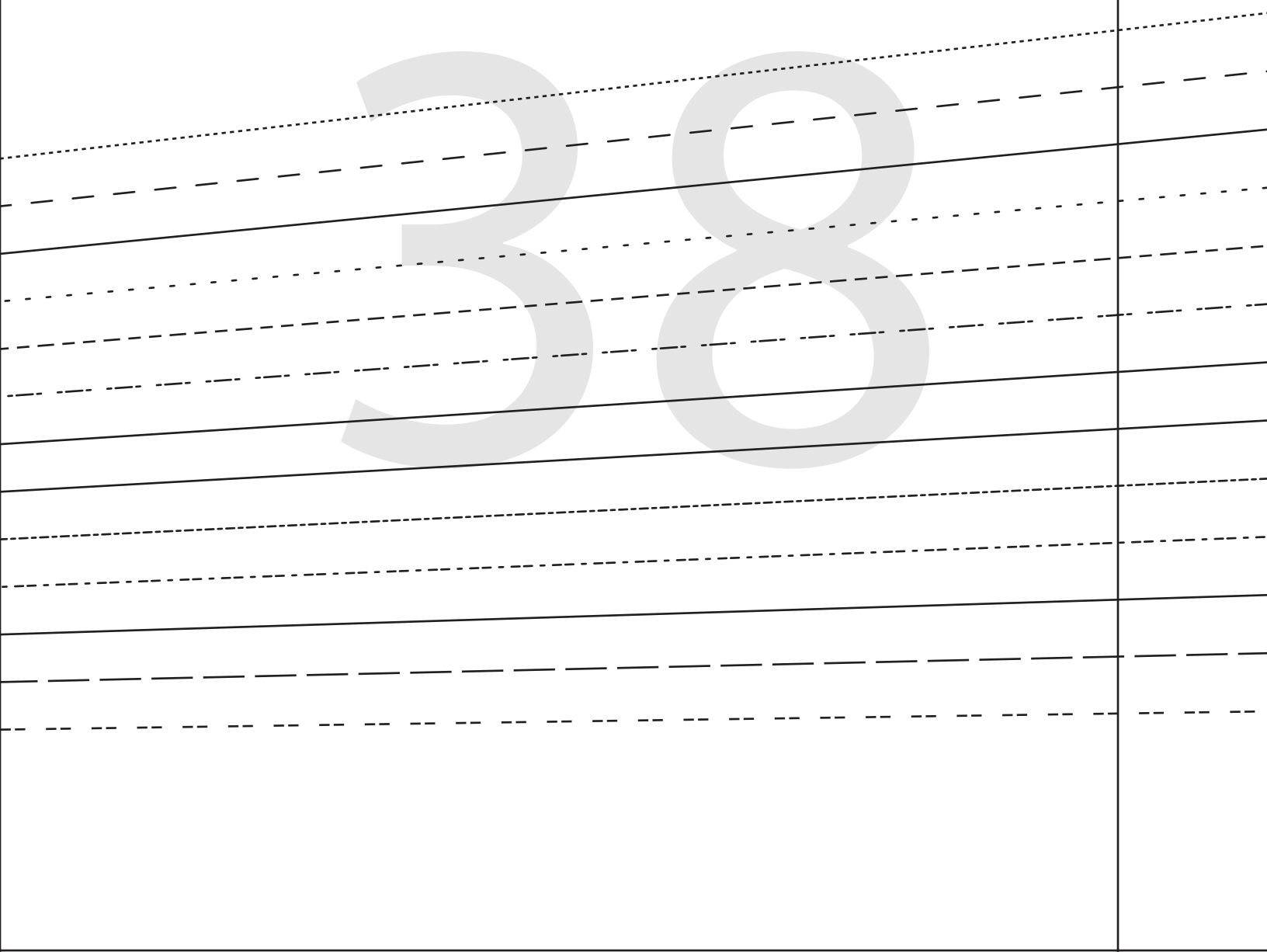
36



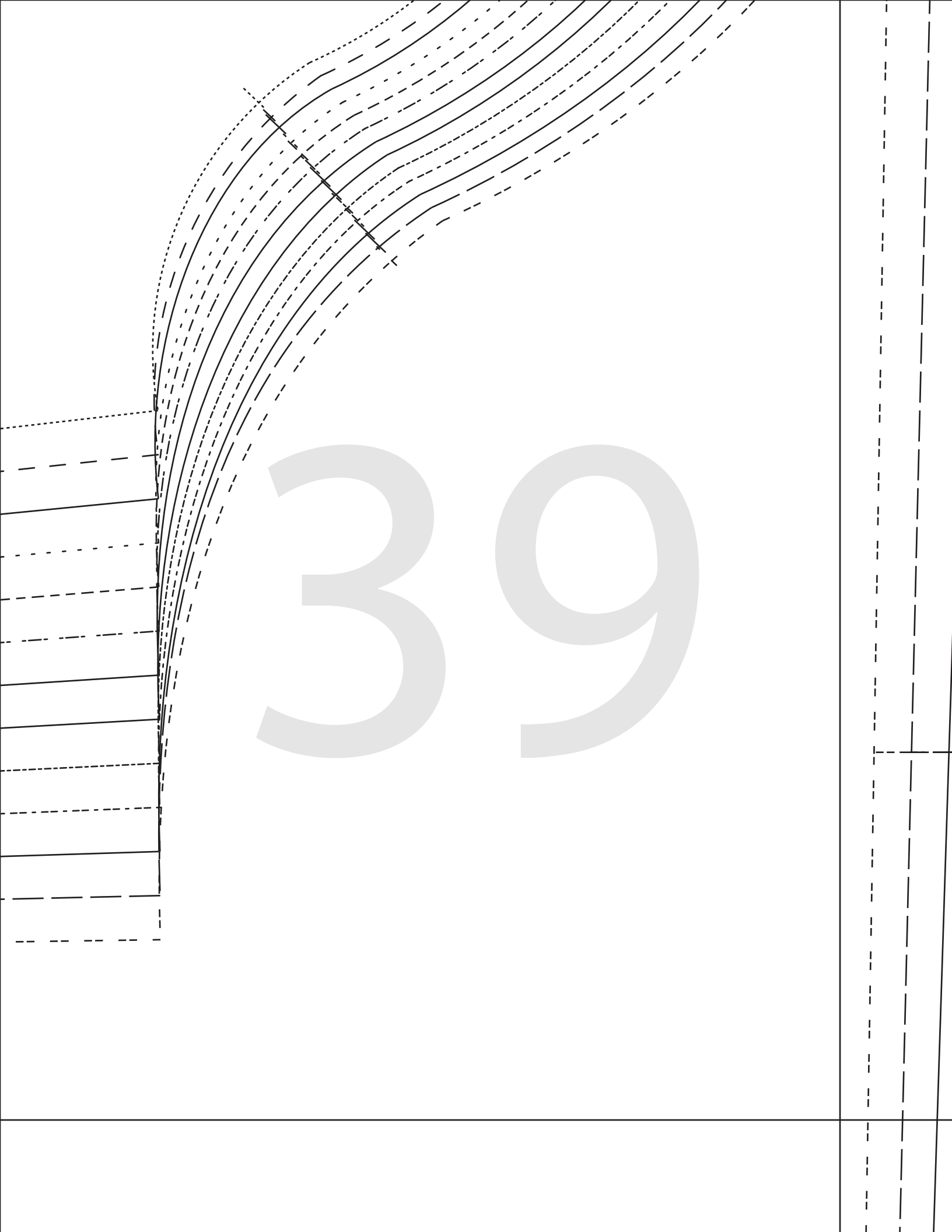
37



38

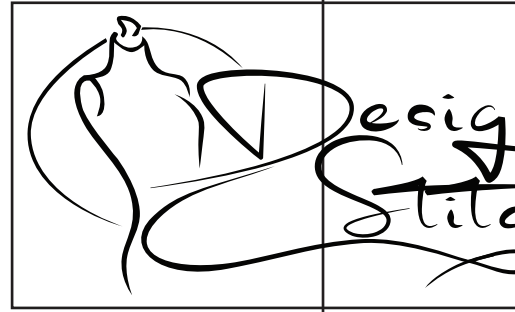


39



40





YASMIN WRAP  
#0723

4 1

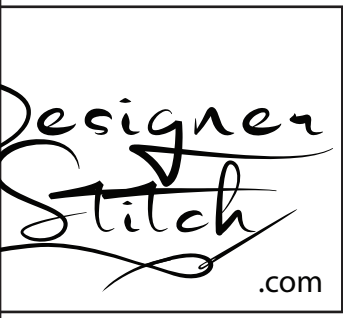
**12**

SHIRRED SLEEVE

CUT 2

(1.5 cms (5/8") seam allowance unless

CUT HERE ABOVE ELBOW SLEEVE 2 cms (3/8")



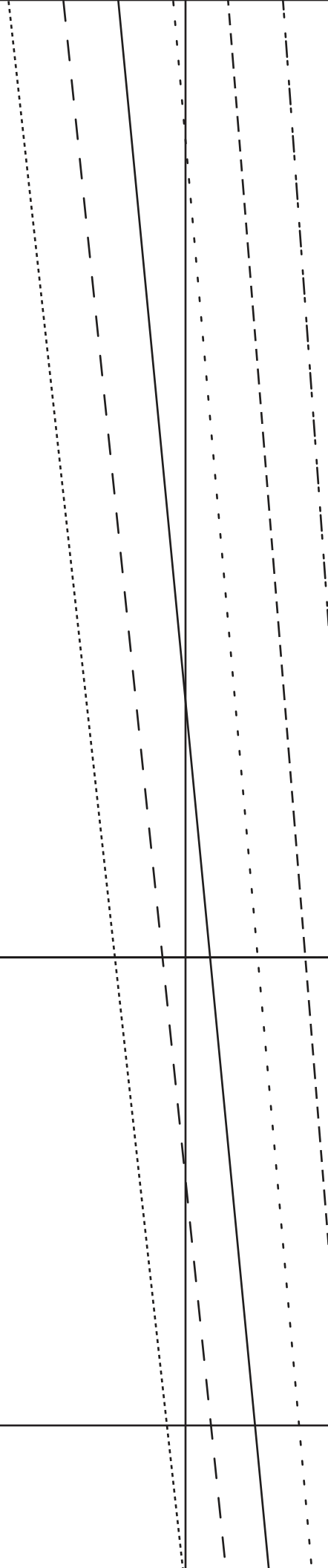
WRAP DRESS  
0723

12  
ED SLEEVE  
CUT 2

(allowance unless otherwise stated)

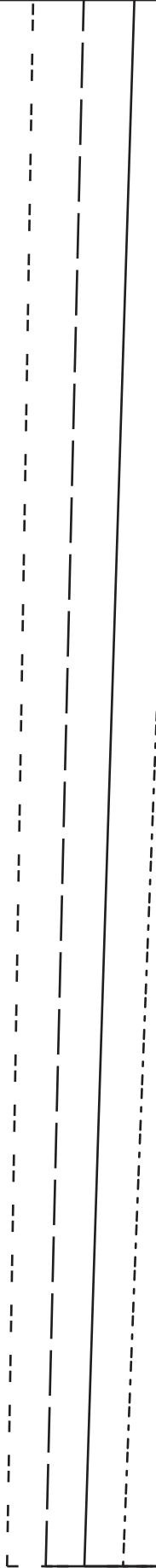
42

SLEEVE 2 cms (3/4") SEAM ALLOWANCE



43

44



45

46

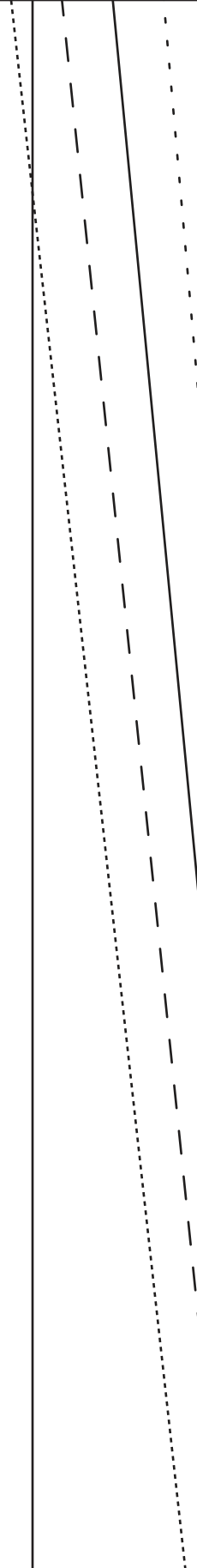


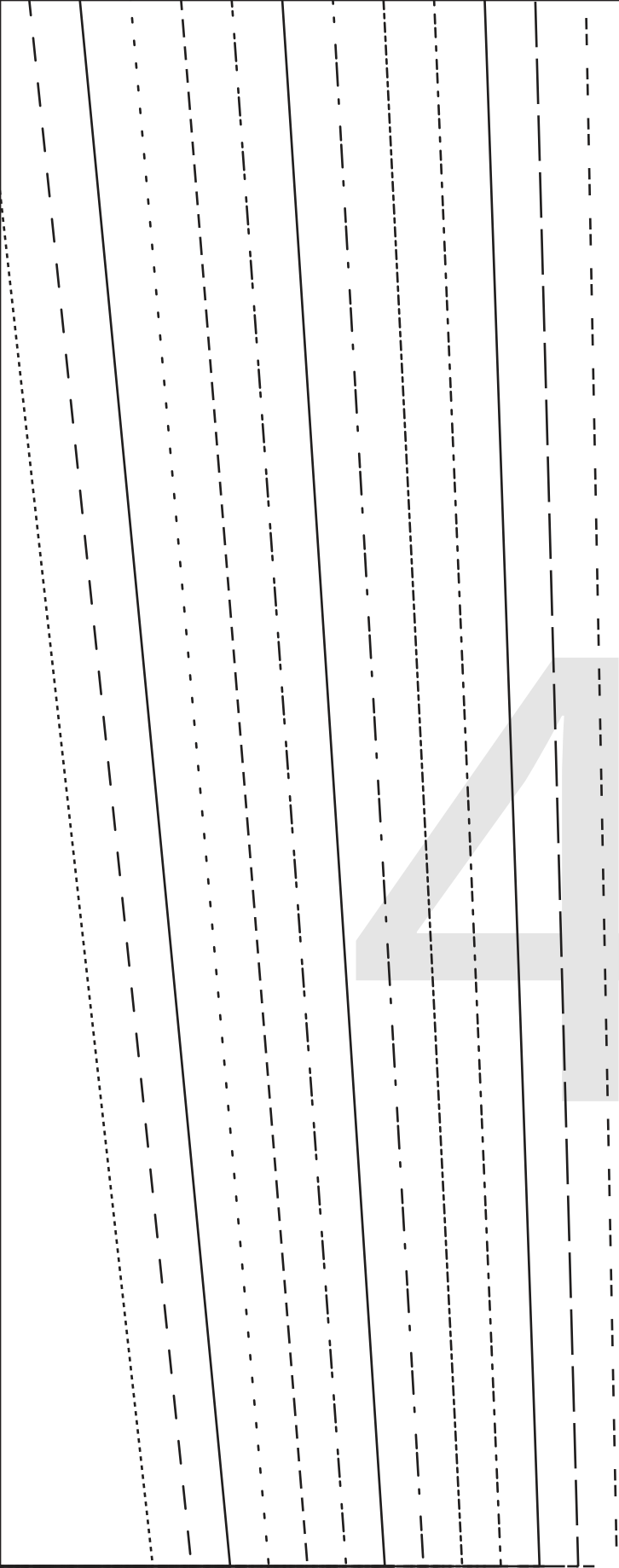
CUT HERE LONG SLEEVE

2 cms (3/4")

47

2 cms (3/4") SEAM ALLOWANCE





48