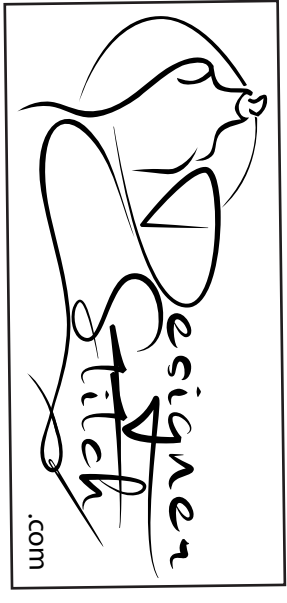


1
 BACK
 CUT 1 FOLD
 (1.5 cms (5/8") seam allowance unless otherwise stated)



TALI TWIST BLOUSE
 #0823

6 mms (1/4") SEAM ALLOWANCE

1 cm (3/8") SEAM ALLOWANCE

1 cm (3/8") SEAM ALLOWANCE

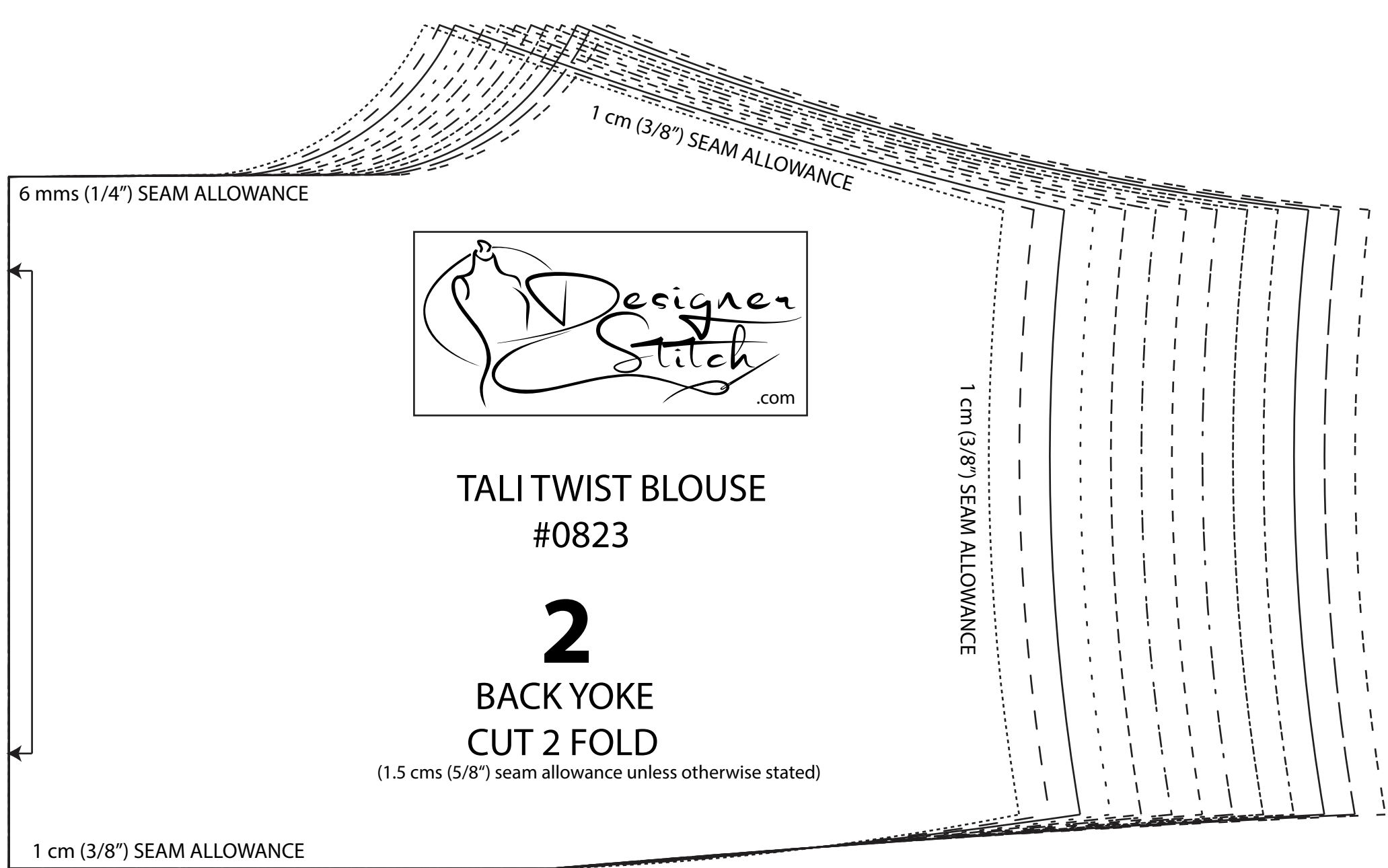
LENGTHEN/SHORTEN HERE



TALI TWIST BLOUSE
 #0823

3
 FRONT - B CUP
 CUT 2
 (1.5 cms (5/8") seam allowance unless otherwise stated)

1 cm (3/8") SEAM ALLOWANCE



2
 BACK YOKE
 CUT 2 FOLD
 (1.5 cms (5/8") seam allowance unless otherwise stated)



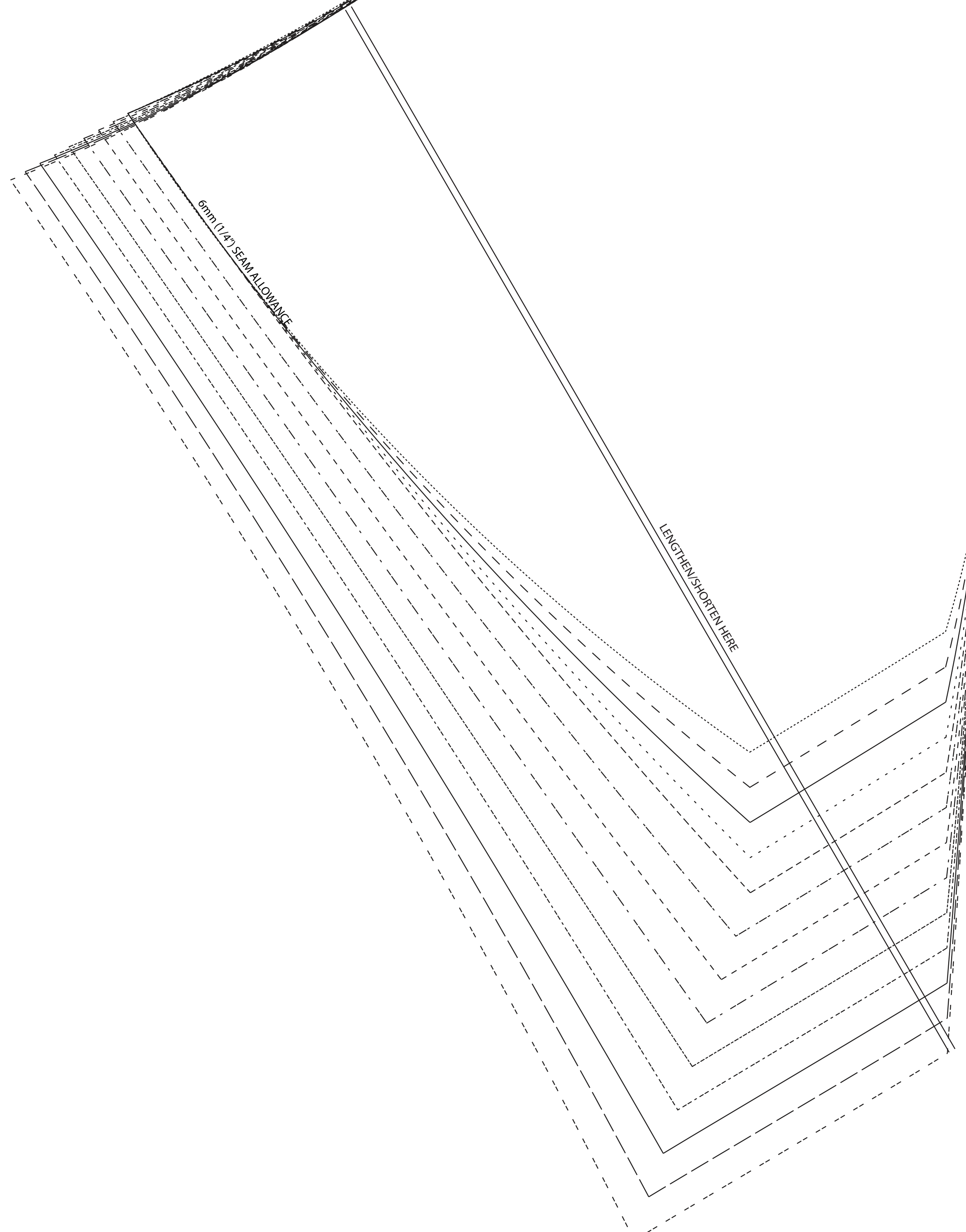
TALI TWIST BLOUSE
 #0823

6 mms (1/4") SEAM ALLOWANCE

1 cm (3/8") SEAM ALLOWANCE

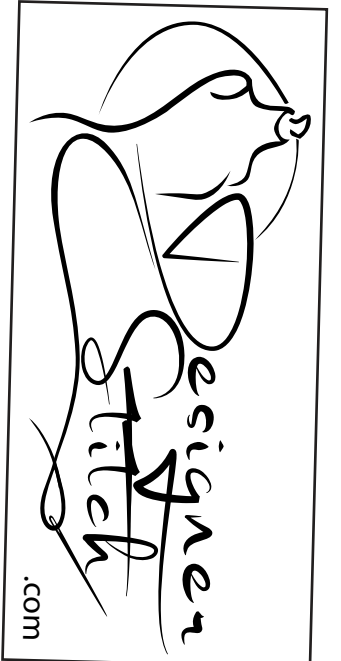
1 cm (3/8") SEAM ALLOWANCE

1 cm (3/8") SEAM ALLOWANCE



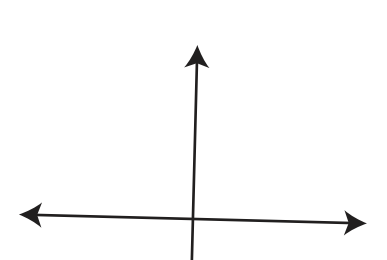
6 mms (1/4") SEAM ALLOWANCE

LENGTHEN/SHORTEN HERE



TALI TWIST BLOUSE
 #0823

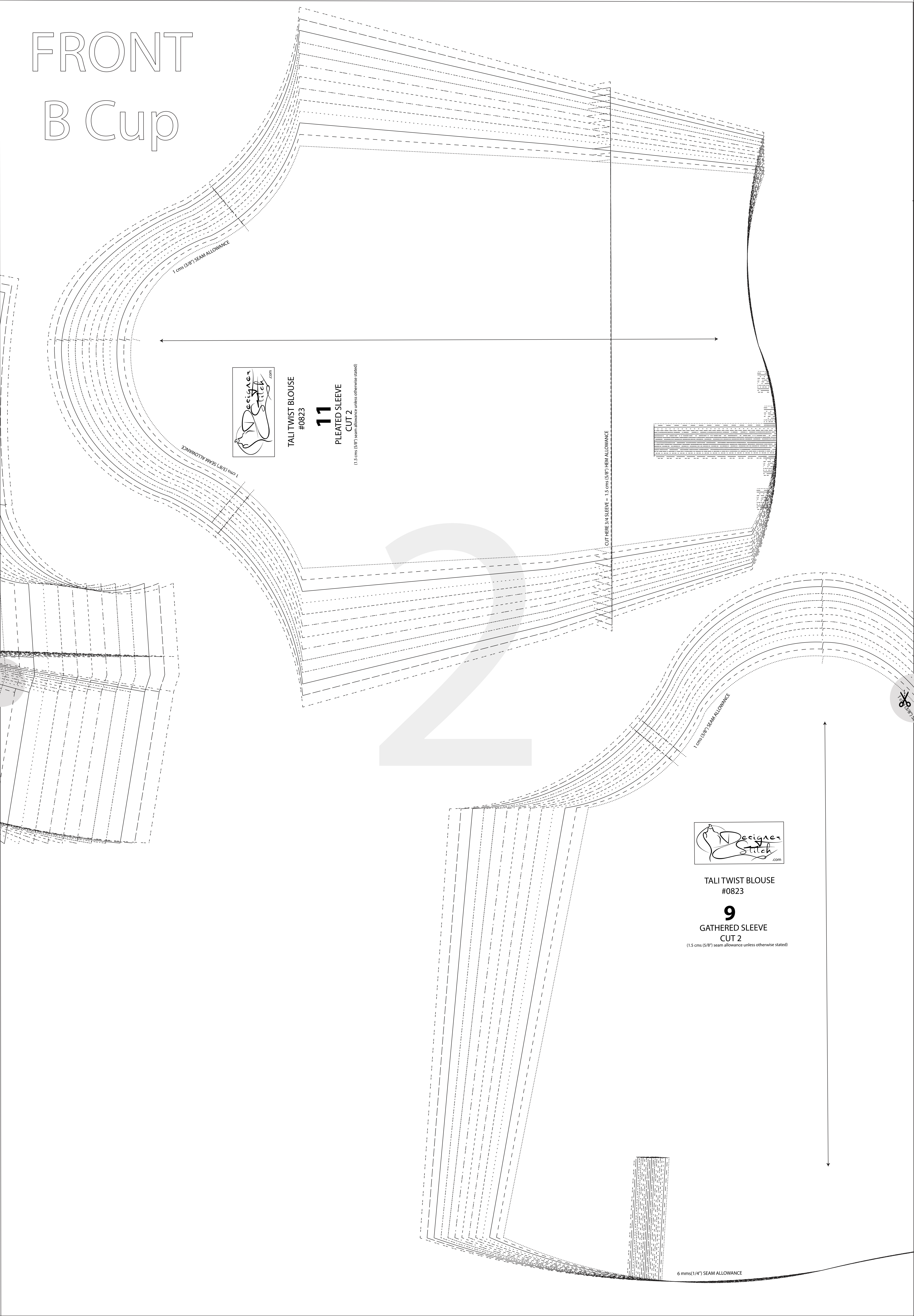
10
 CUFF FOR GATHERED SLEEVE
 CUT 4 - MAIN
 CUT 2 - INTERFACING
 (6 mms (1/4") seam allowance unless otherwise stated)



6 mms (1/4") seam allowance unless otherwise stated



FRONT B Cup



TALI TWIST BLOUSE
#0823

11

PLEATED SLEEVE
CUT 2

(1.5 cms (5/8") seam allowance unless otherwise stated)

1 cm (3/8") SEAM ALLOWANCE

1 cm (3/8") SEAM ALLOWANCE

CUT HERE 3/4 SLEEVE - 1.5 cm (5/8") HEM ALLOWANCE

1 cm (3/8") SEAM ALLOWANCE



TALI TWIST BLOUSE
#0823

9

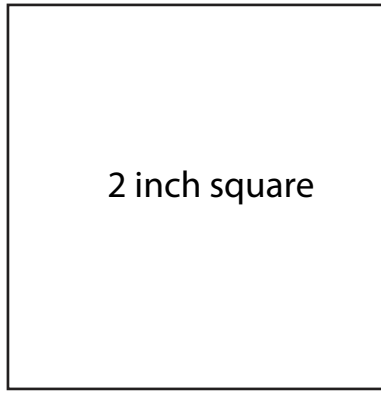
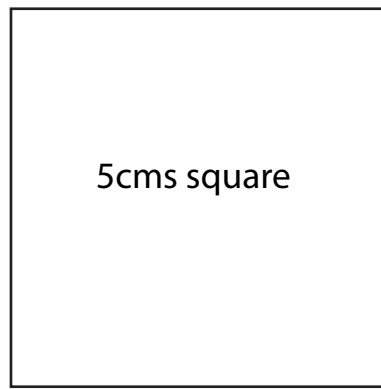
GATHERED SLEEVE
CUT 2

(1.5 cms (5/8") seam allowance unless otherwise stated)

6 mm (1/4") SEAM ALLOWANCE



TALI TWIST BLOUSE #0823



TALI TWIST BLOUSE #0823

13

TOP PLACKET
CUT 2 -
MAIN/INTERFACING
(6 mm (1/4") seam allowance unless otherwise stated)

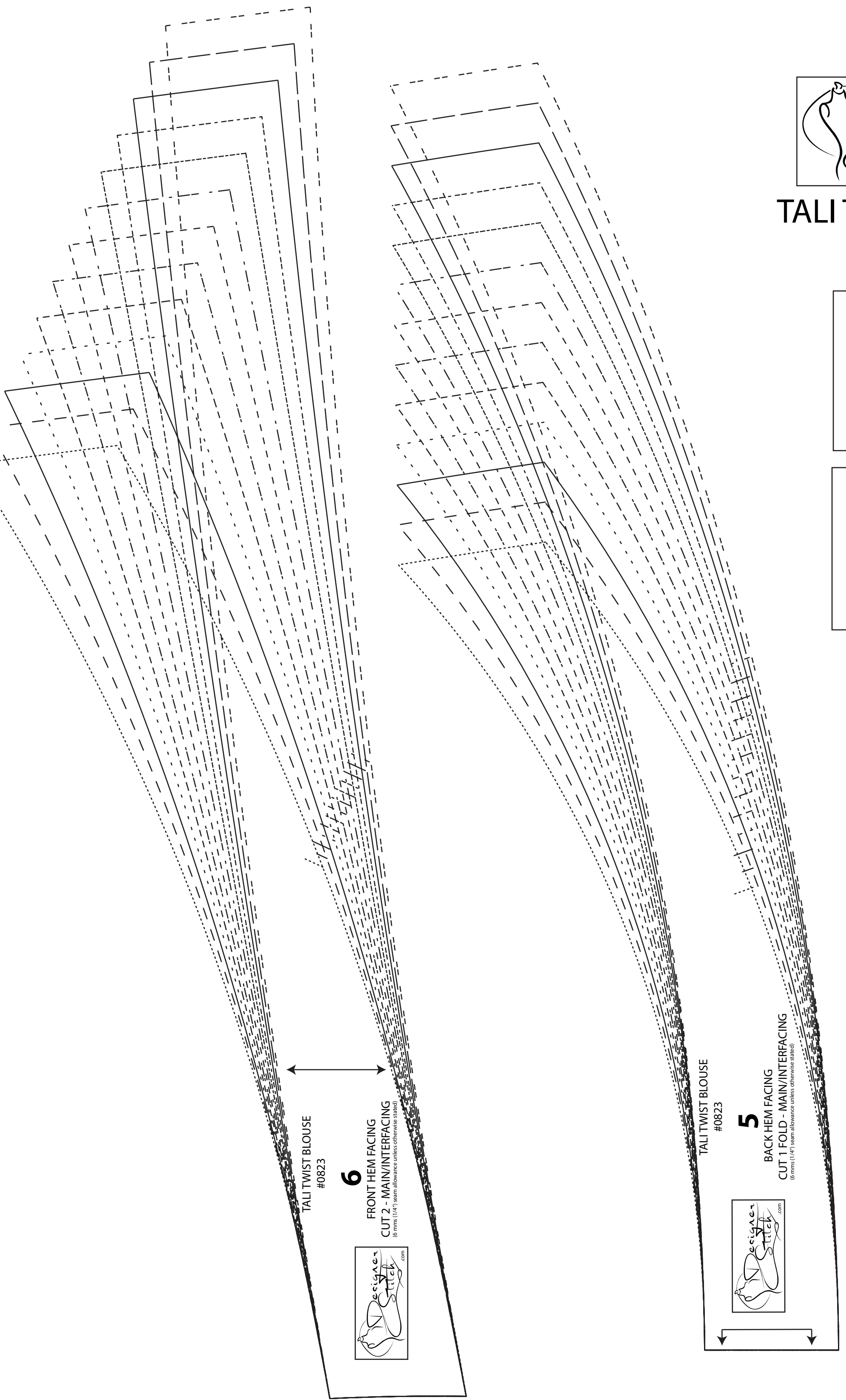
SIZE KEY

| | |
|----|-------|
| 1 | |
| 2 | ----- |
| 3 | _____ |
| 4 | |
| 5 | ----- |
| 6 | _____ |
| 7 | |
| 8 | ----- |
| 9 | _____ |
| 10 | |
| 11 | ----- |
| 12 | _____ |
| 13 | |

TALI TWIST BLOUSE #0823

14

UNDER PLACKET
CUT 2 -
MAIN/INTERFACING
(6 mm (1/4") seam allowance unless otherwise stated)



TALI TWIST BLOUSE #0823

12

CUFF (FOR PLEATED SLEEVE)
CUT 4 - MAIN
CUT 2 - INTERFACING
(6 mm (1/4") seam allowance unless otherwise stated)

TALI TWIST BLOUSE #0823

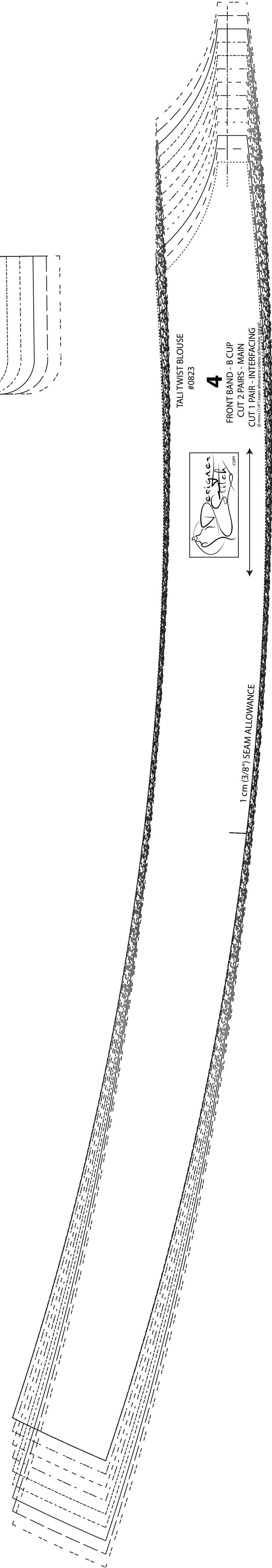
7

COLLAR STAND
CUT 2 FOLD - MAIN
CUT 1 FOLD - INTERFACING
(6 mm (1/4") seam allowance unless otherwise stated)

TALI TWIST BLOUSE #0823

8

UPPER COLLAR
CUT 2 FOLD - MAIN
Cut 1 FOLD - INTERFACING
(6 mm (1/4") seam allowance unless otherwise stated)



SEAM ALLOWANCE