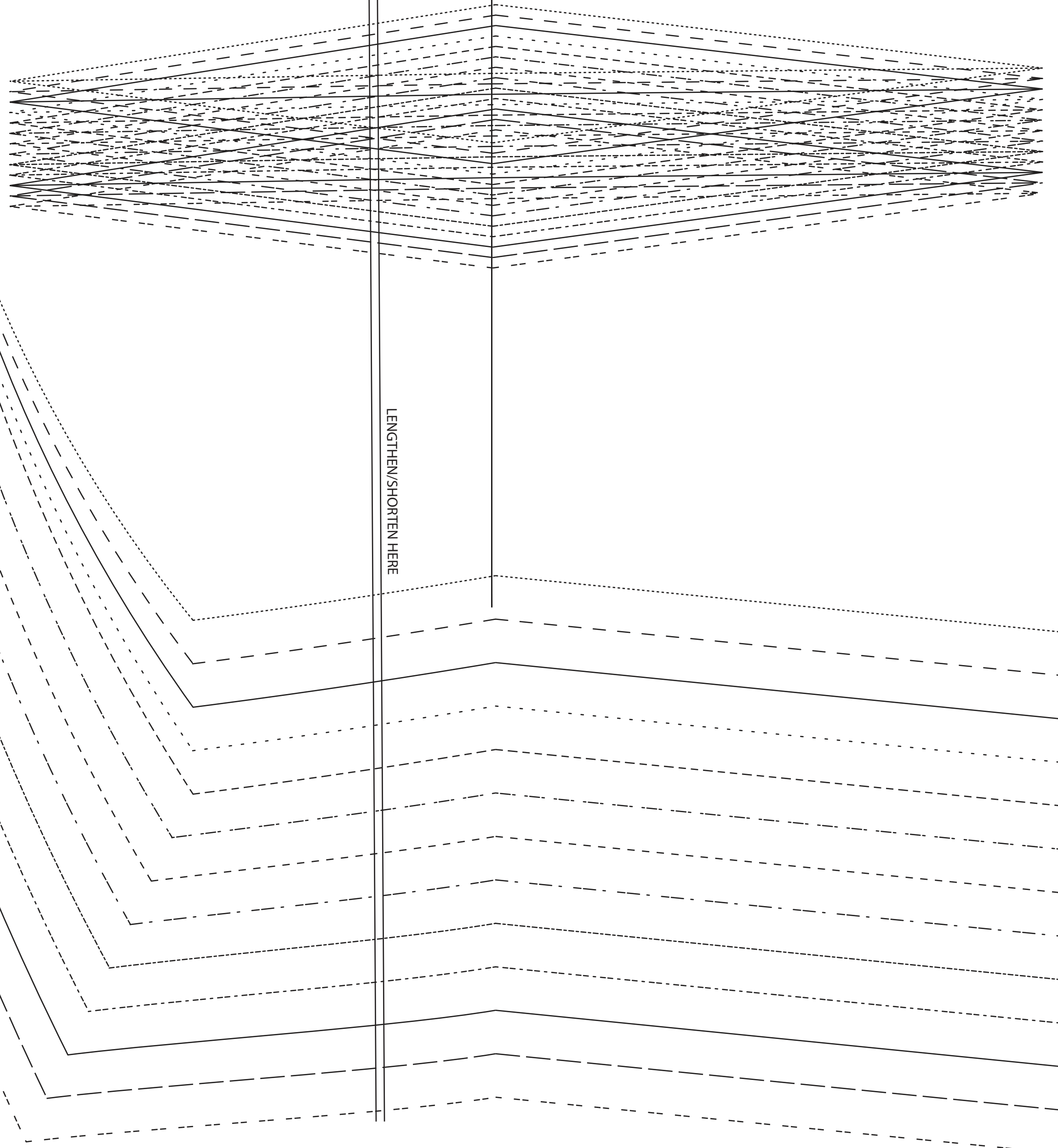


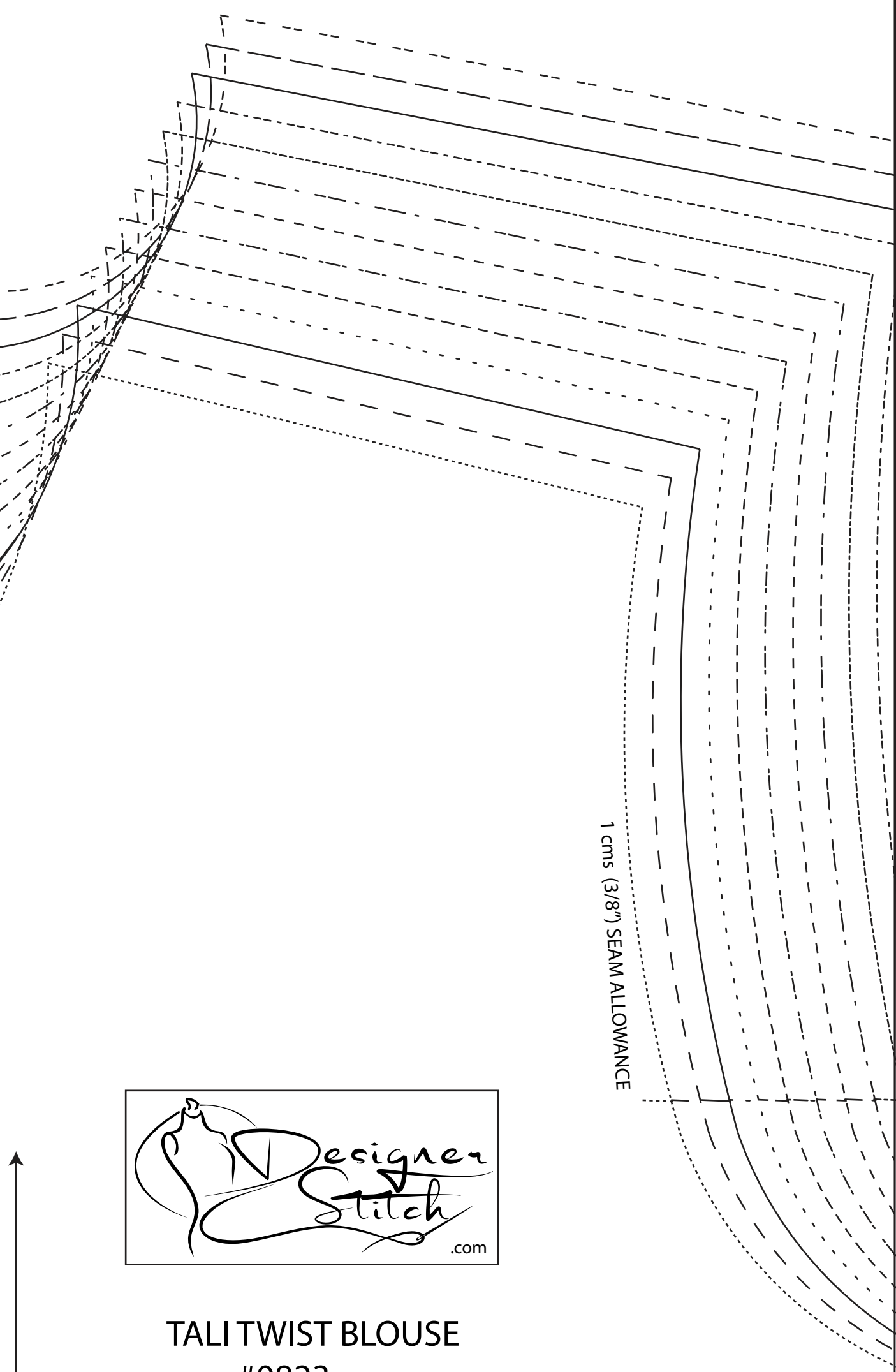
TALI TWIST BLOUSE  
#0823

**1**  
BACK  
CUT 1 FOLD  
(1.5 cms (5/8") seam allowance unless otherwise stated)



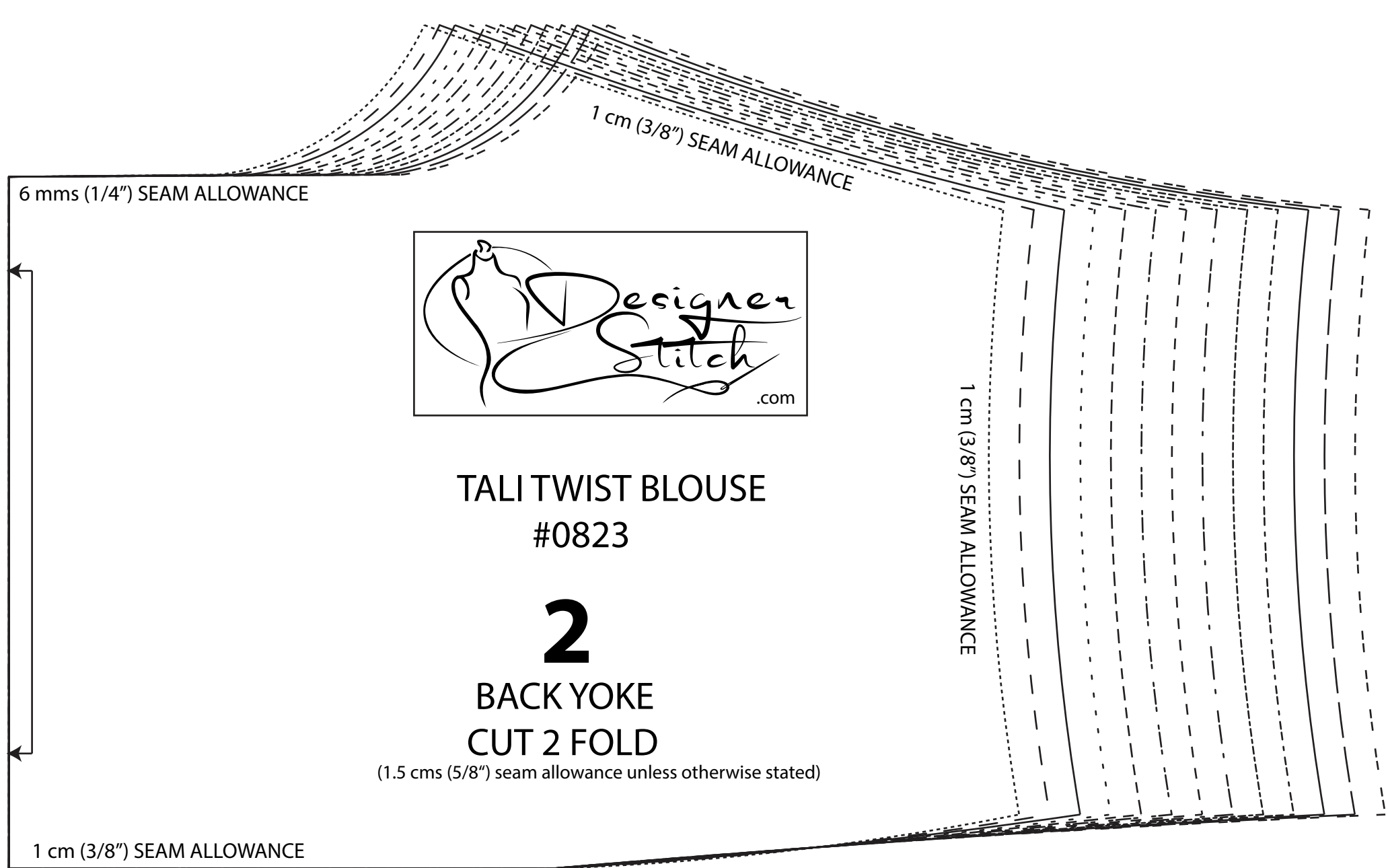
TALI TWIST BLOUSE  
#0823

**3**  
FRONT - D CUP  
CUT 2  
(1.5 cms (5/8") seam allowance unless otherwise stated)



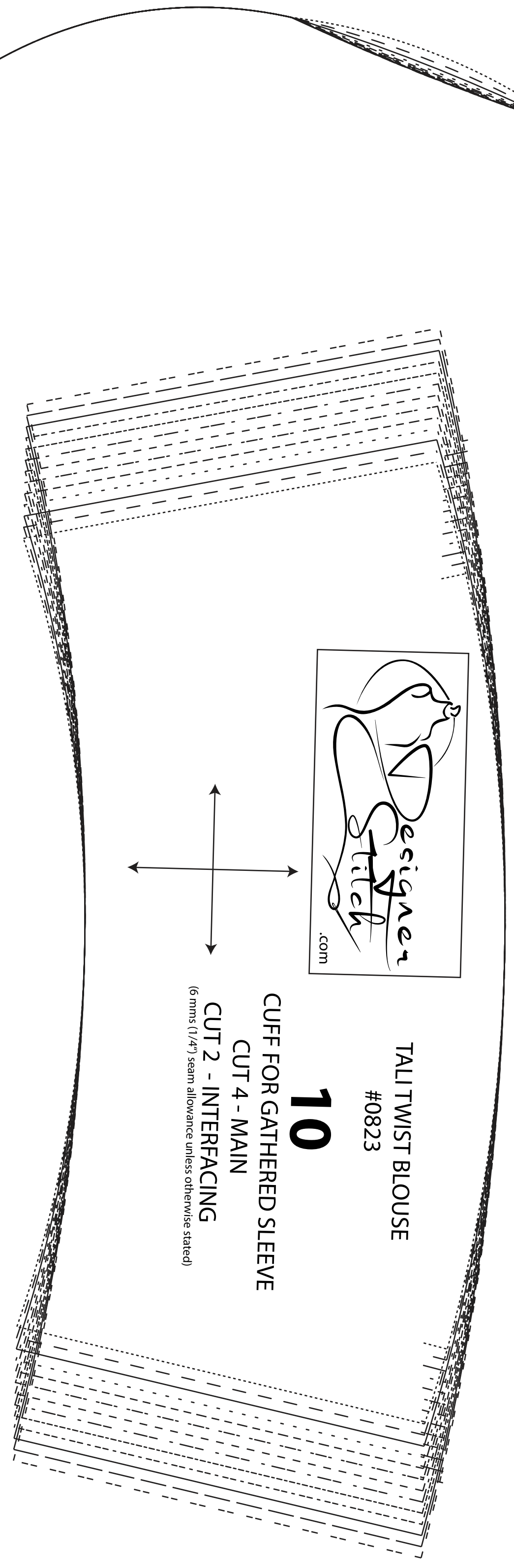
TALI TWIST BLOUSE  
#0823

**2**  
BACK YOKE  
CUT 2 FOLD  
(1.5 cms (5/8") seam allowance unless otherwise stated)

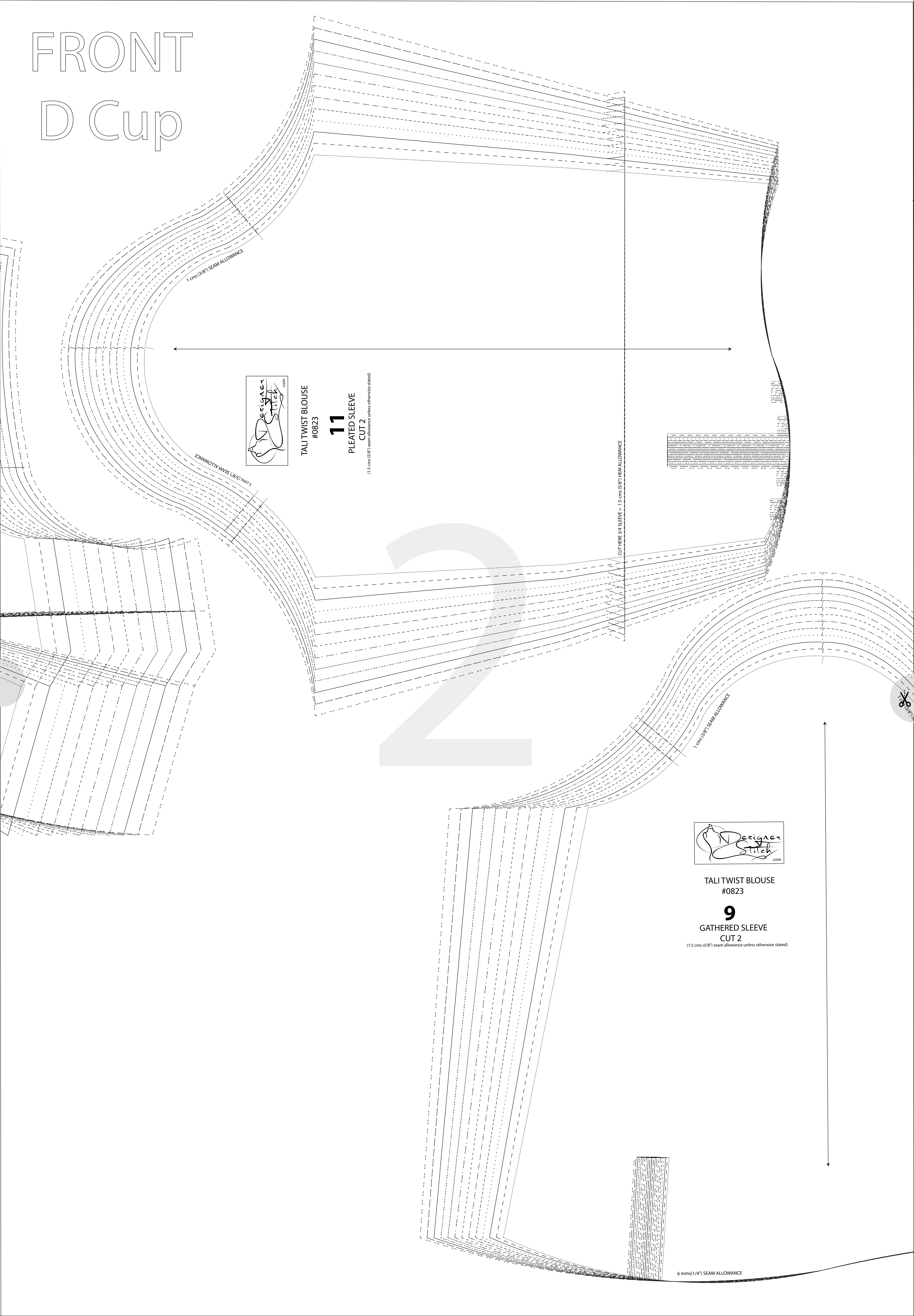


TALI TWIST BLOUSE  
#0823

**10**  
CUFF FOR GATHERED SLEEVE  
CUT 4 - MAIN  
CUT 2 - INTERFACING  
(6 mms (1/4") seam allowance unless otherwise stated)



# FRONT D Cup



TALI TWIST BLOUSE  
#0823

**11**

PLEATED SLEEVE  
CUT 2

(1.5 cms (5/8") seam allowance unless otherwise stated)

CUT HERE 3/4 SLEEVE = 1.5 cms (5/8") HEM ALLOWANCE



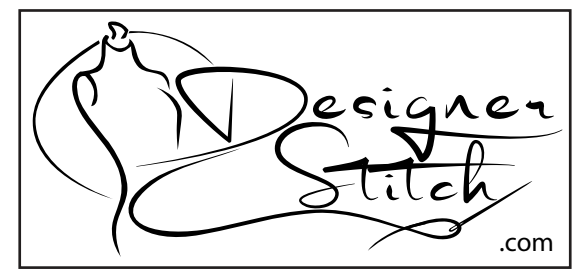
TALI TWIST BLOUSE  
#0823

**9**

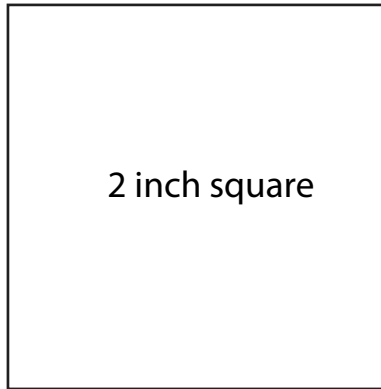
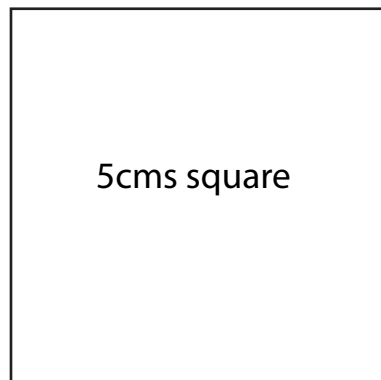
GATHERED SLEEVE  
CUT 2

(1.5 cms (5/8") seam allowance unless otherwise stated)

6 mms (1/4") SEAM ALLOWANCE



**TALI TWIST BLOUSE  
#0823**



TALI TWIST BLOUSE #0823

**13**

TOP PLACKET  
CUT 2 -  
MAIN/INTERFACING  
(6 mm (1/4") seam allowance unless otherwise stated)

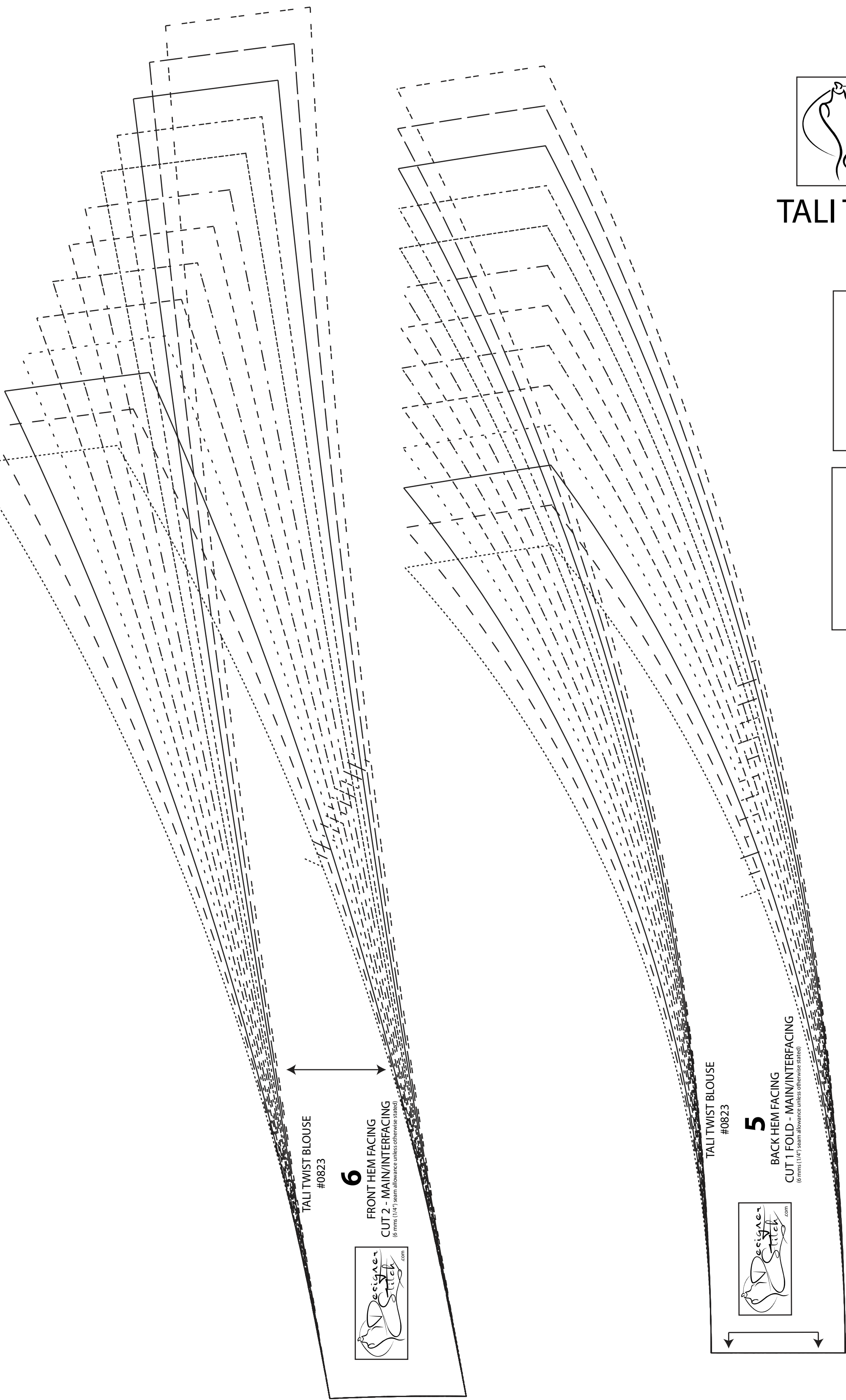
TALI TWIST BLOUSE #0823

**14**

UNDER PLACKET  
CUT 2 -  
MAIN/INTERFACING  
(6 mm (1/4") seam allowance unless otherwise stated)

**SIZE KEY**

1	.....
2	-----
3	_____
4	.....
5	-----
6	_____
7	.....
8	-----
9	_____
10	.....
11	-----
12	_____
13	.....



TALI TWIST BLOUSE #0823

**6**

FRONT-HEM FACING  
CUT 2 - MAIN/INTERFACING  
(6 mm (1/4") seam allowance unless otherwise stated)

TALI TWIST BLOUSE #0823

**5**

BACK-BODY FACING  
CUT 2 - MAIN/INTERFACING  
(6 mm (1/4") seam allowance unless otherwise stated)

TALI TWIST BLOUSE #0823

**12**

CUFF (FOR PLEATED SLEEVE)  
CUT 4 - MAIN  
CUT 2 - INTERFACING  
(6 mm (1/4") seam allowance unless otherwise stated)

TALI TWIST BLOUSE #0823

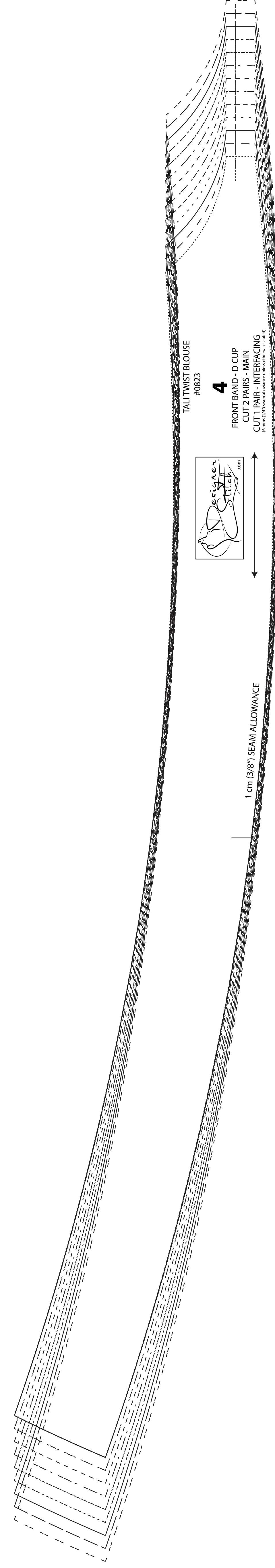
**7**

COLLAR STAND  
CUT 2 FOLD - MAIN  
CUT 1 FOLD - INTERFACING  
(6 mm (1/4") seam allowance unless otherwise stated)

TALI TWIST BLOUSE #0823

**8**

UPPER COLLAR  
CUT 2 FOLD - MAIN  
Cut 1 FOLD - INTERFACING  
(6 mm (1/4") seam allowance unless otherwise stated)



TALI TWIST BLOUSE #0823

**4**

FRONT BAND - D CUP  
CUT 1 PAIR - INTERFACING  
(6 mm (1/4") seam allowance unless otherwise stated)

1 cm (3/8") SEAM ALLOWANCE

SEAM ALLOWANCE