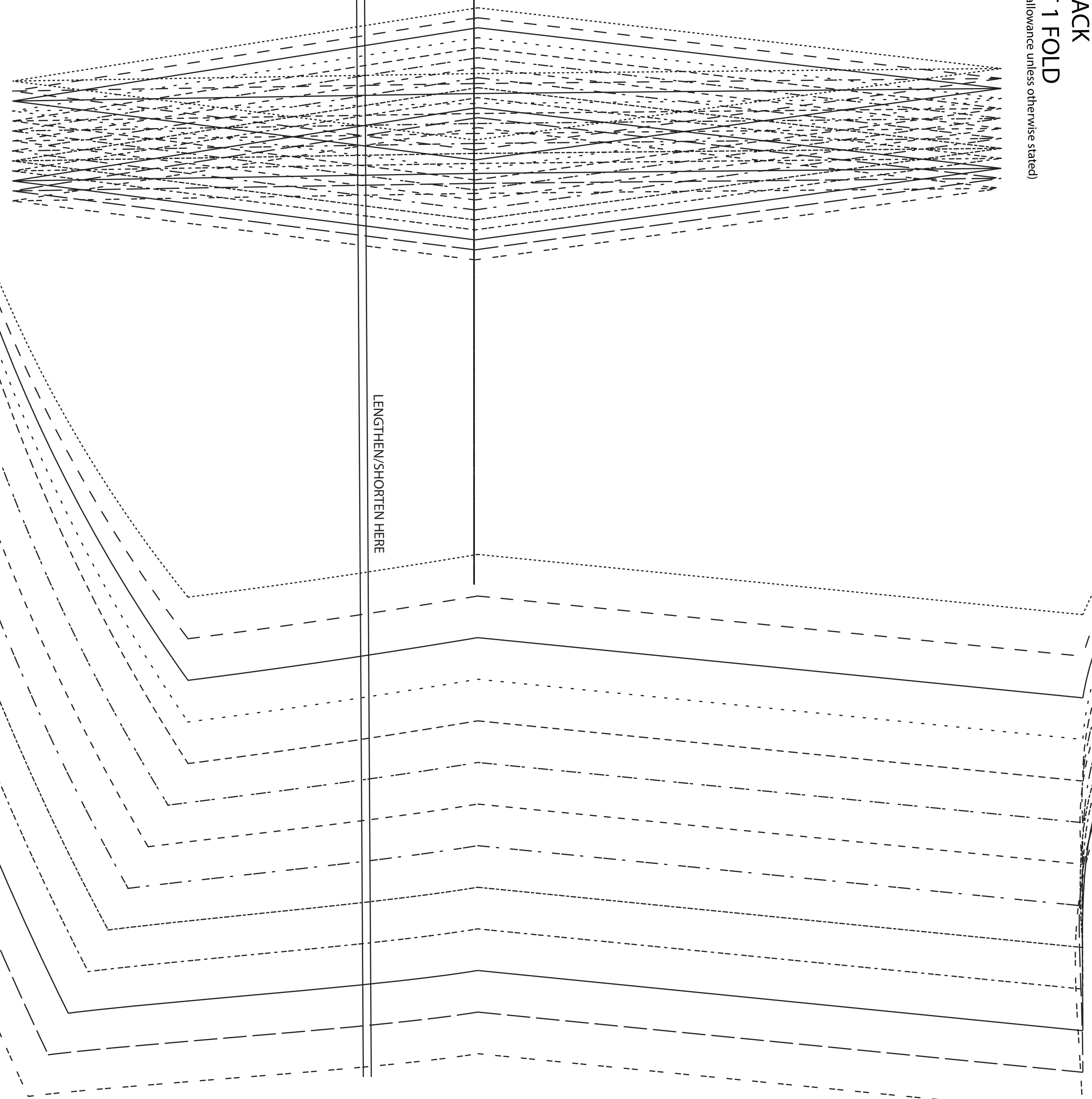




TALI TWIST BLOUSE
#0823

1

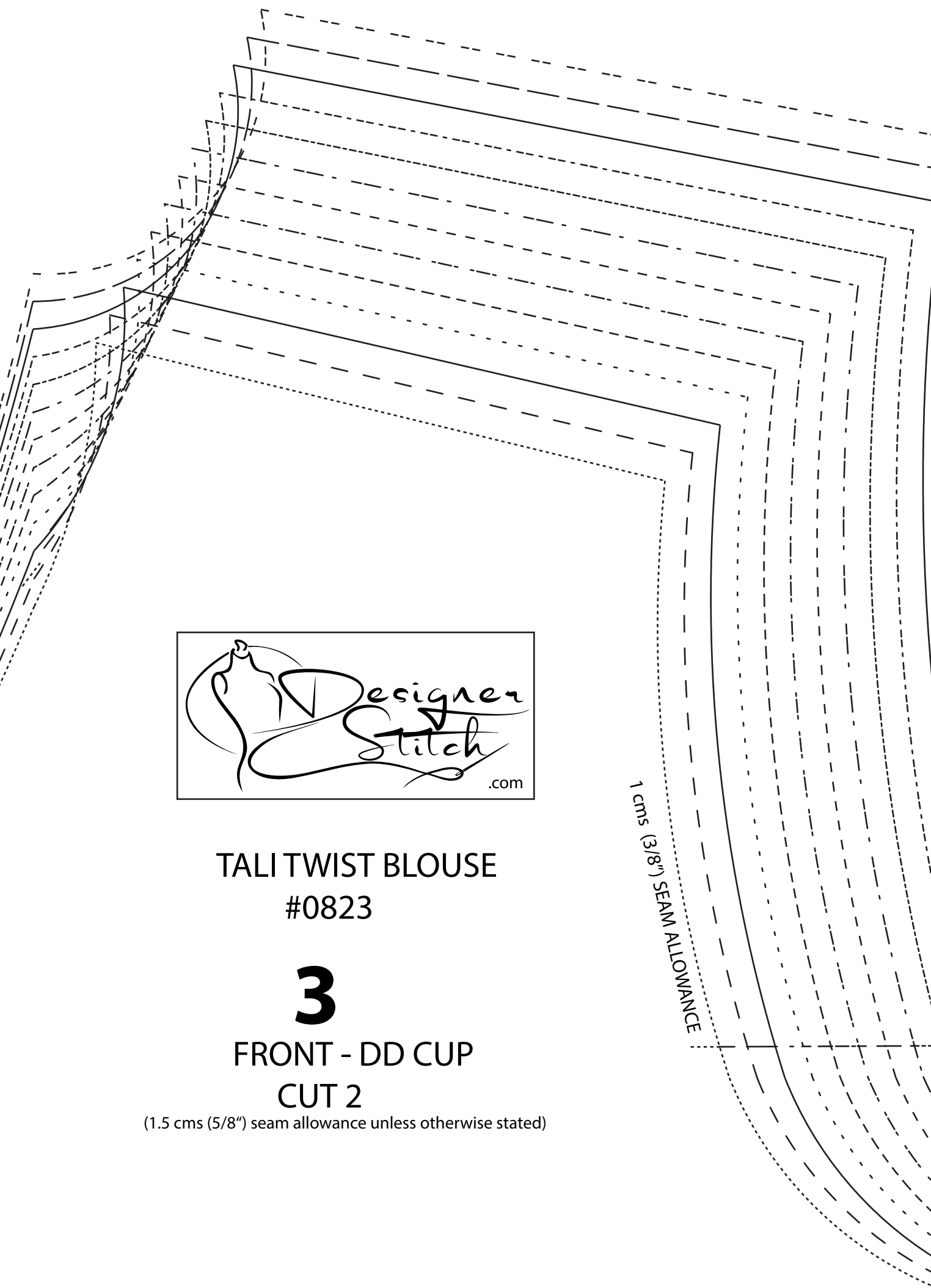
BACK
CUT 1 FOLD
(1.5 cms (5/8") seam allowance unless otherwise stated)



TALI TWIST BLOUSE
#0823

3

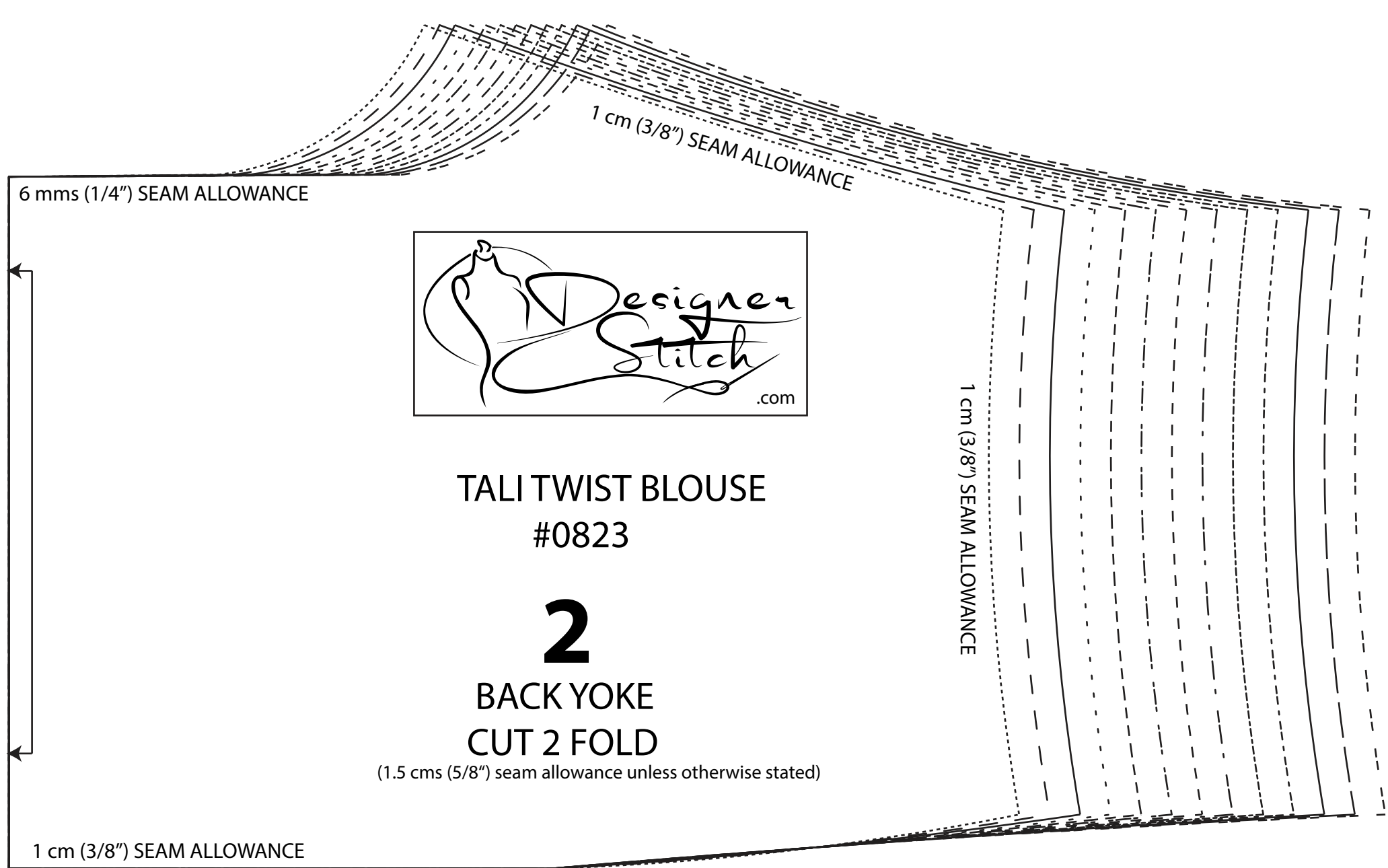
FRONT - DD CUP
CUT 2
(1.5 cms (5/8") seam allowance unless otherwise stated)



TALI TWIST BLOUSE
#0823

2

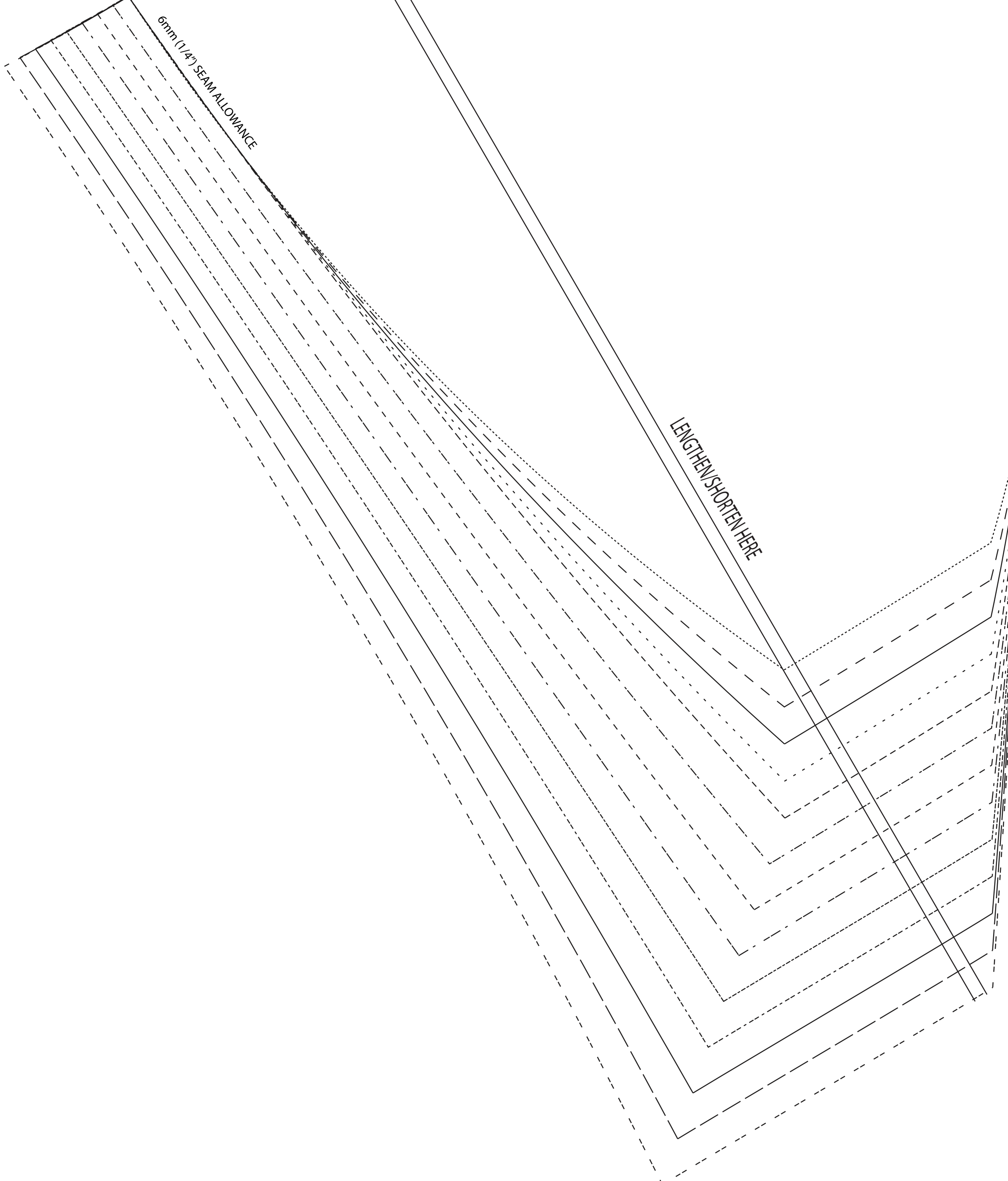
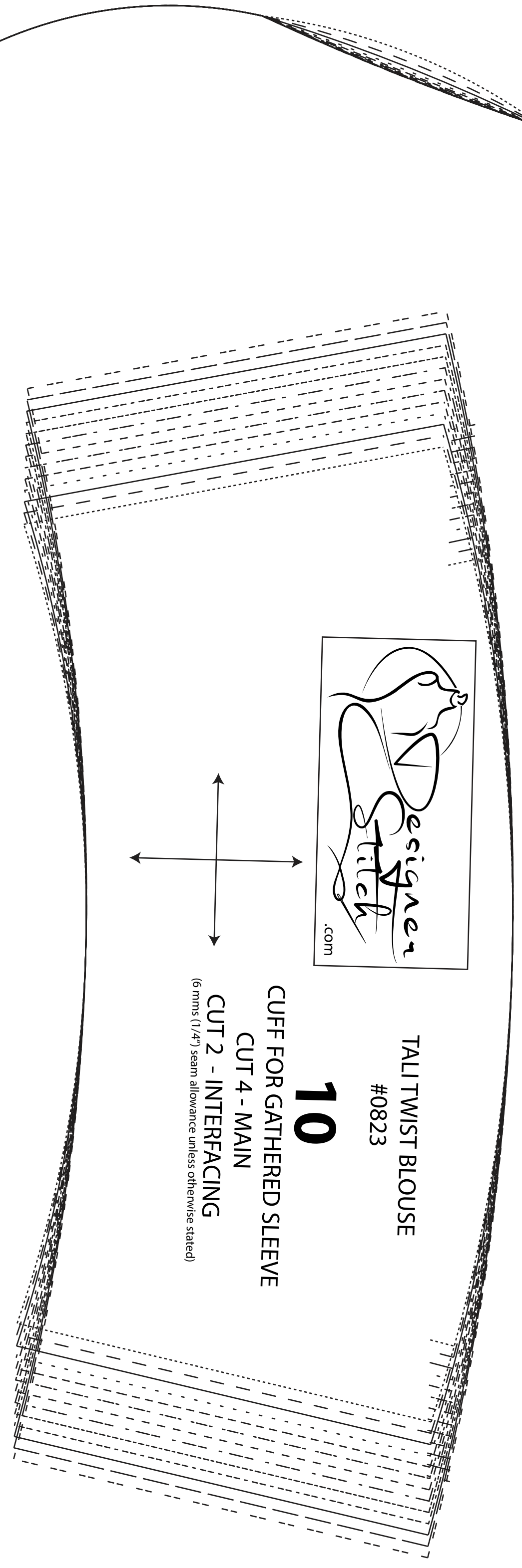
BACK YOKE
CUT 2 FOLD
(1.5 cms (5/8") seam allowance unless otherwise stated)



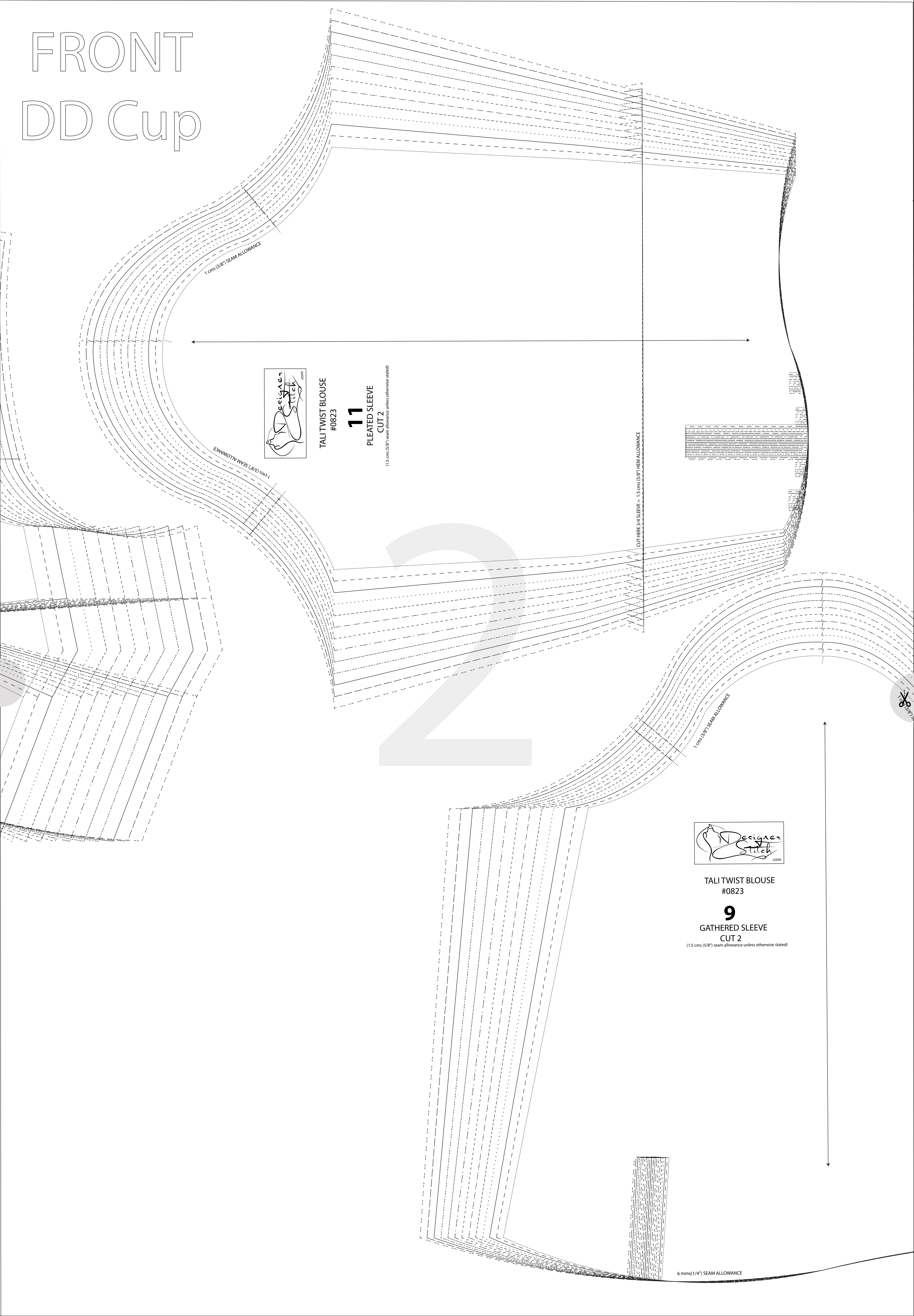
TALI TWIST BLOUSE
#0823

10

CUFF FOR GATHERED SLEEVE
CUT 4 - MAIN
CUT 2 - INTERFACING
(6 mms (1/4") seam allowance unless otherwise stated)



FRONT DD Cup



TALI TWIST BLOUSE
#0823

11

PLEATED SLEEVE

CUT 2

(1.5 cms (5/8") seam allowance unless otherwise stated)



TALI TWIST BLOUSE
#0823

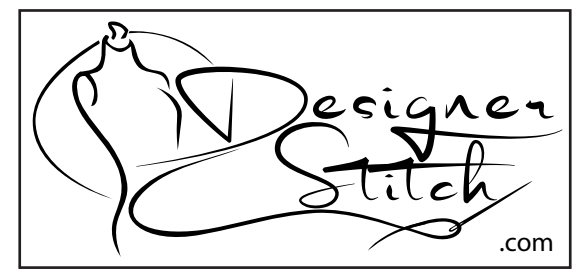
9

GATHERED SLEEVE

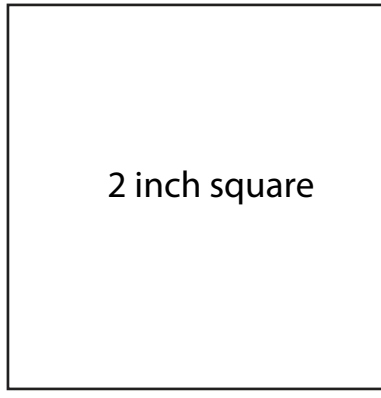
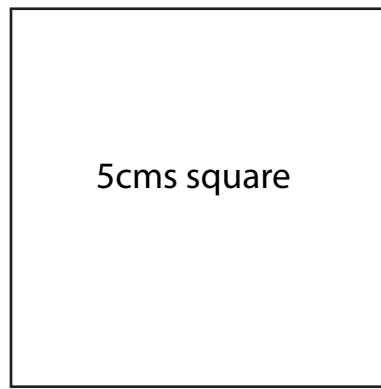
CUT 2

(1.5 cms (5/8") seam allowance unless otherwise stated)

6 cms (1/4") SEAM ALLOWANCE



TALI TWIST BLOUSE #0823



TALI TWIST BLOUSE #0823

13

TOP PLACKET
CUT 2 - MAIN/INTERFACING
(6 mm (1/4") seam allowance unless otherwise stated)

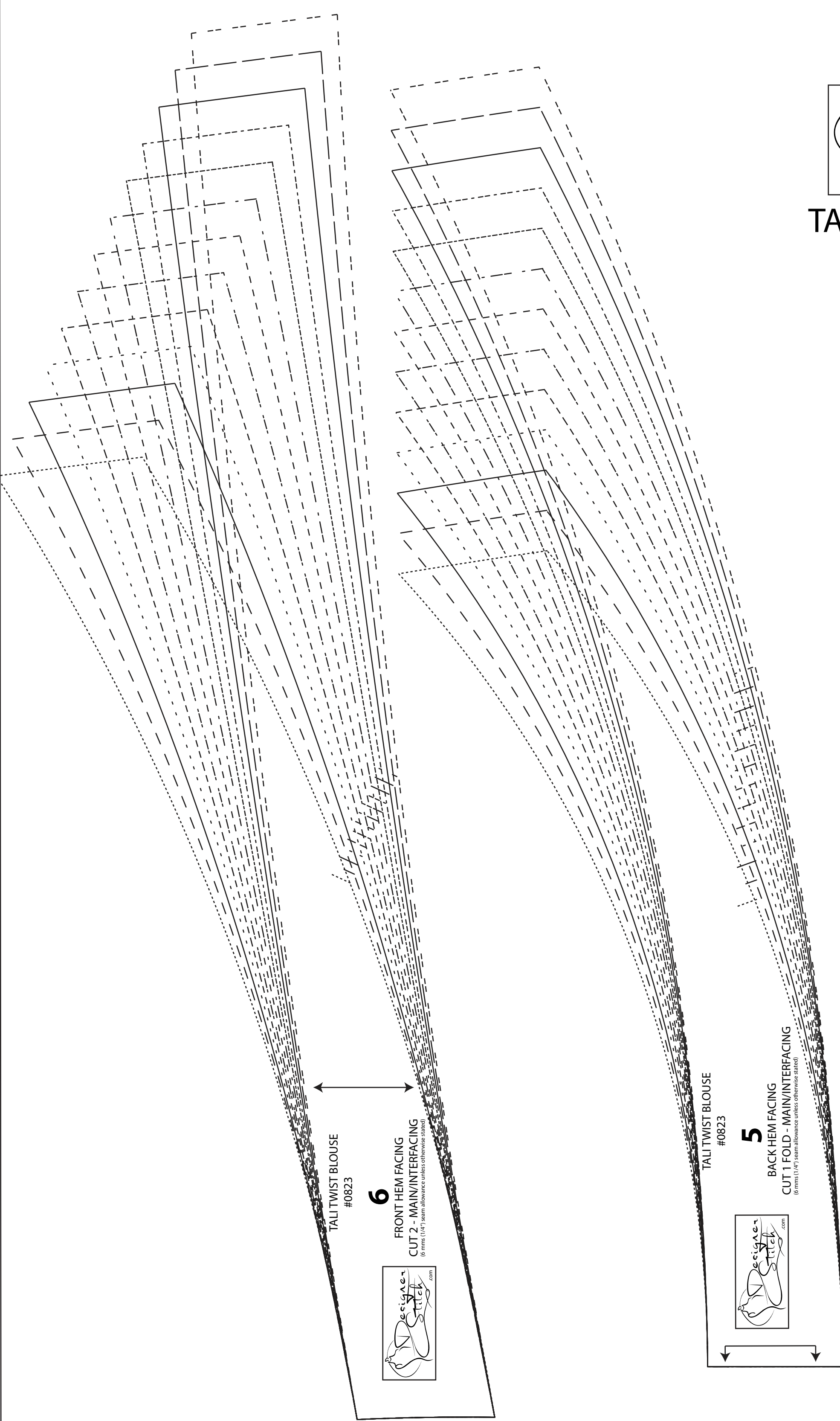
TALI TWIST BLOUSE #0823

14

UNDER PLACKET
CUT 2 - MAIN/INTERFACING
(6 mm (1/4") seam allowance unless otherwise stated)

SIZE KEY

1
2	-----
3	_____
4
5	-----
6	_____
7
8	-----
9	_____
10
11	-----
12	_____
13



TALI TWIST BLOUSE #0823

12

CUFF (FOR PLEATED SLEEVE)
CUT 4 - MAIN
CUT 2 - INTERFACING
(6 mm (1/4") seam allowance unless otherwise stated)

TALI TWIST BLOUSE #0823

7

COLLAR STAND
CUT 2 FOLD - MAIN
CUT 1 FOLD - INTERFACING
(6 mm (1/4") seam allowance unless otherwise stated)

TALI TWIST BLOUSE #0823

8

UPPER COLLAR
CUT 2 FOLD - MAIN
CUT 1 FOLD - INTERFACING
(6 mm (1/4") seam allowance unless otherwise stated)

