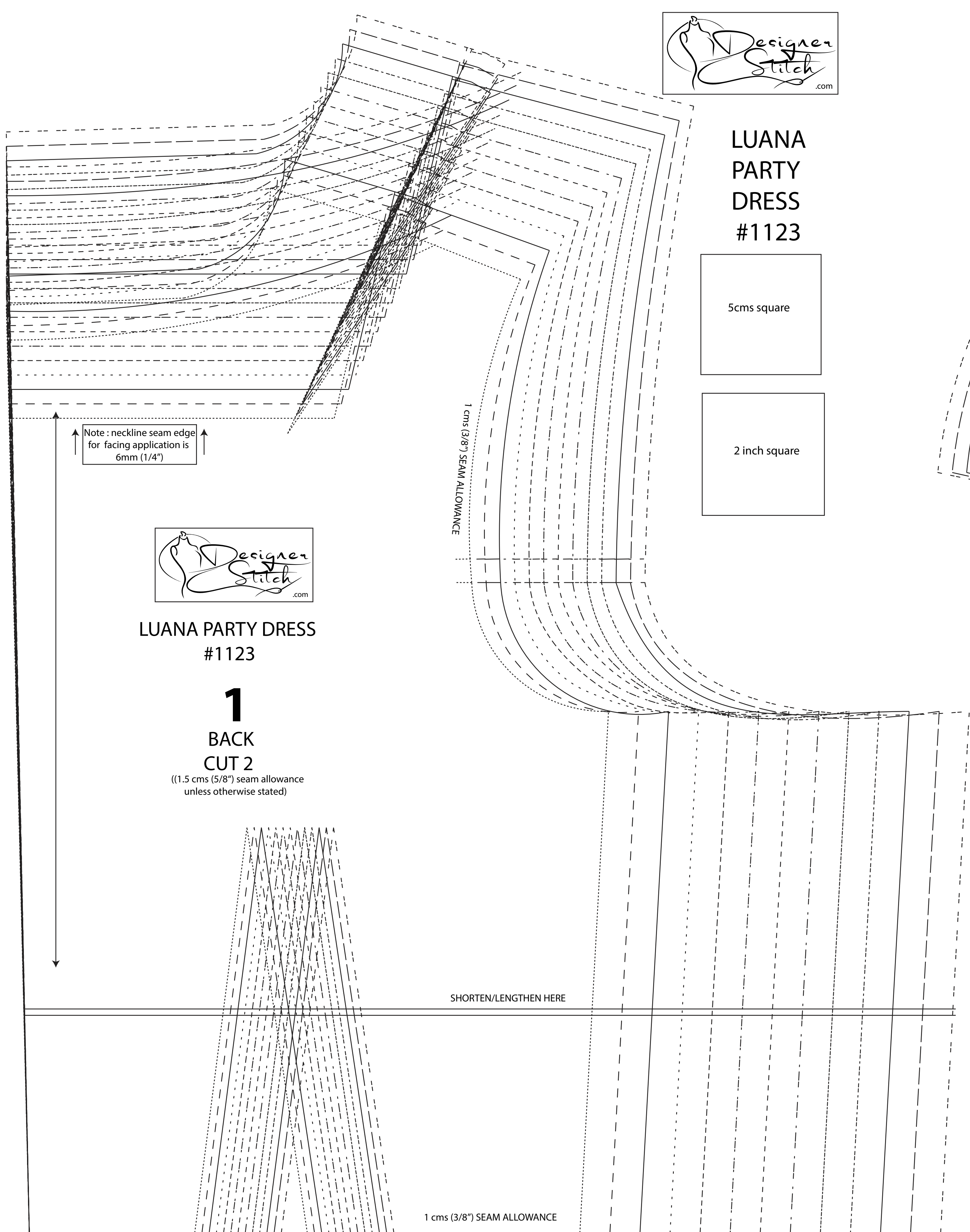




LUANA PARTY DRESS #1123

5cms square

2 inch square



LUANA PARTY DRESS #1123

1

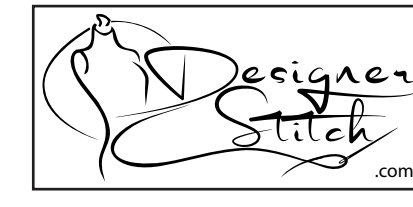
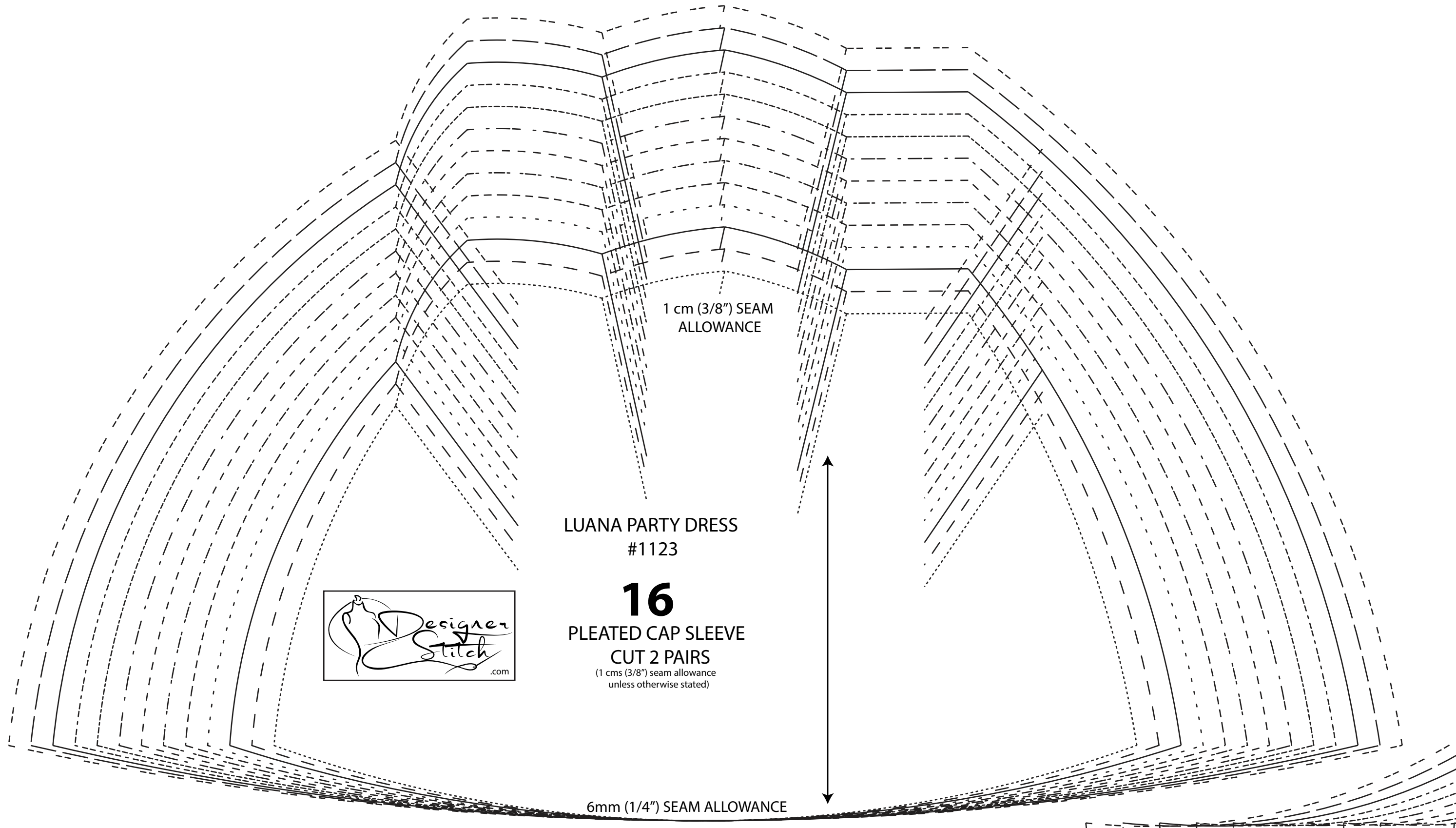
BACK CUT 2

(1.5 cms (5/8") seam allowance unless otherwise stated)

1 cms (3/8") SEAM ALLOWANCE

SHORTEN/LENGTHEN HERE

1 cms (3/8") SEAM ALLOWANCE



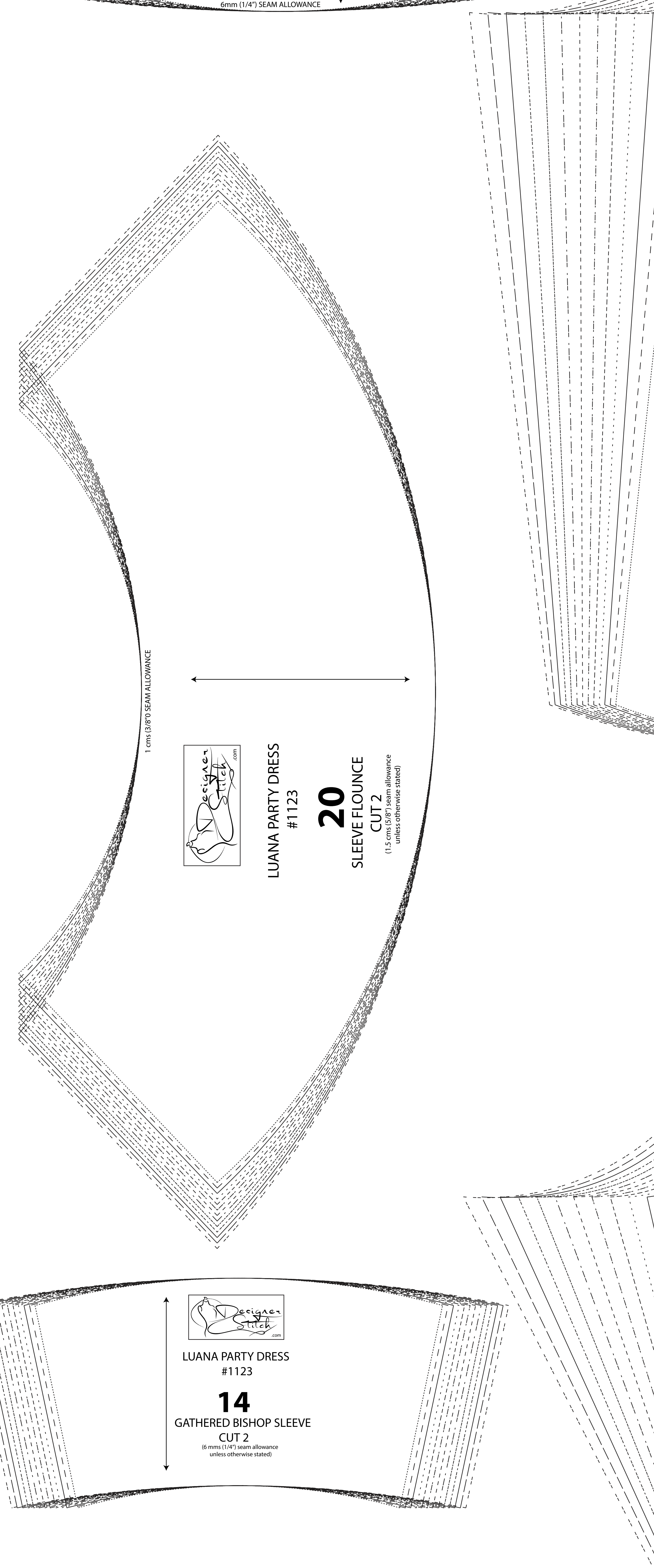
LUANA PARTY DRESS #1123

16 PLEATED CAP SLEEVE CUT 2 PAIRS

(1 cms (3/8") seam allowance unless otherwise stated)

1 cm (3/8") SEAM ALLOWANCE

6mm (1/4") SEAM ALLOWANCE

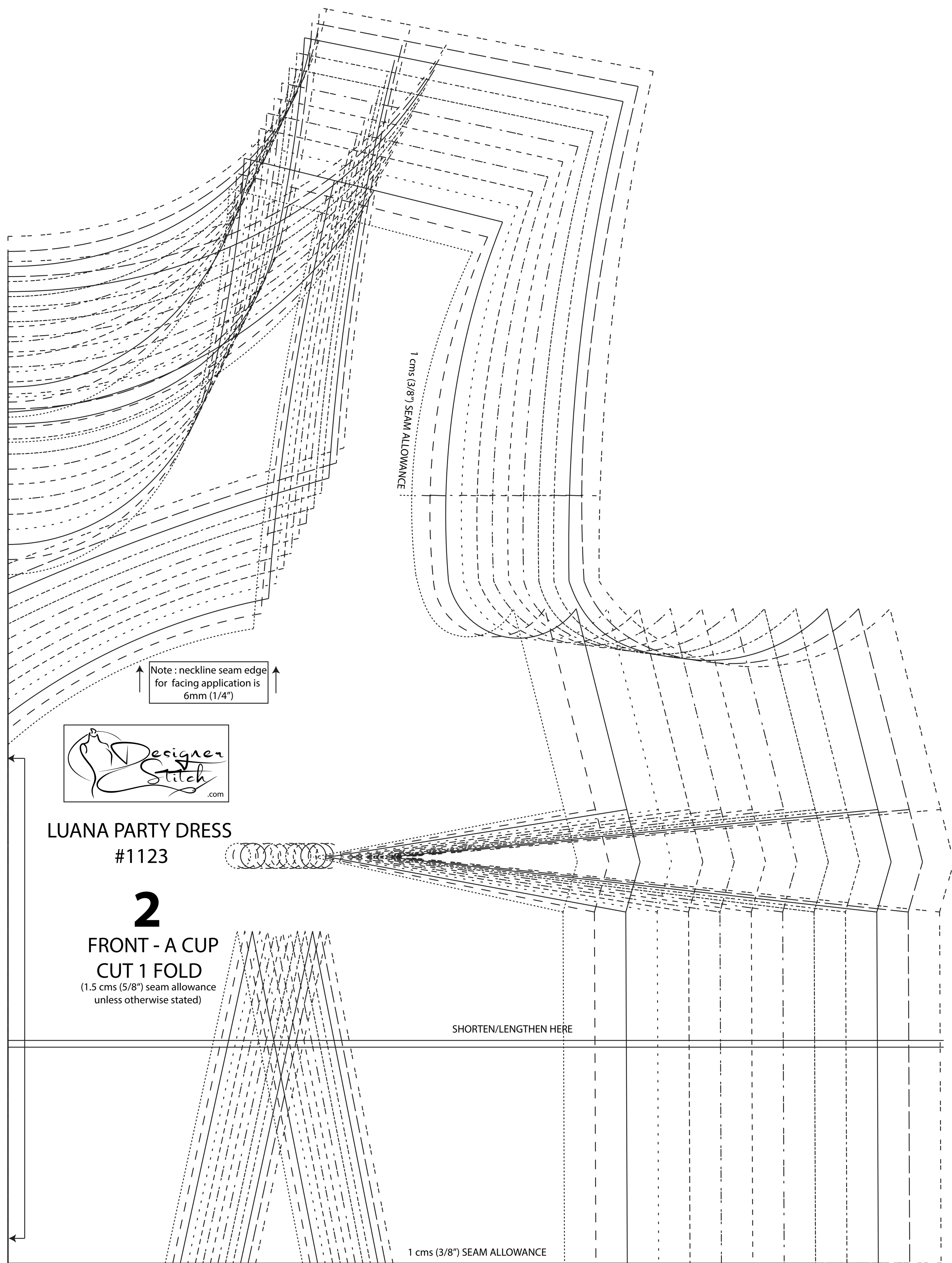


LUANA PARTY DRESS #1123

20 SLEEVE FLOUNCE CUT 2

(1.5 cms (5/8") seam allowance unless otherwise stated)

1 cms (3/8") SEAM ALLOWANCE



LUANA PARTY DRESS #1123

2

FRONT - A CUP CUT 1 FOLD

(1.5 cms (5/8") seam allowance unless otherwise stated)

1 cms (3/8") SEAM ALLOWANCE

SHORTEN/LENGTHEN HERE

1 cms (3/8") SEAM ALLOWANCE



LUANA PARTY DRESS #1123

14 GATHERED BISHOP SLEEVE CUT 2

(6 mm (1/4") seam allowance unless otherwise stated)

LUANA PARTY DRESS #1123

18

ARMHOLE BIND CUT 2



FRONT - A Cup



LUANA PARTY DRESS
#1123

13
GATHERED BISHOP SLEEVE
CUT 2
(1.5 cms (5/8") seam allowance
unless otherwise stated)

1 cm (3/8") SEAM ALLOWANCE

1 cm (3/8") SEAM ALLOWANCE

6mm (1/4") SEAM ALLOWANCE



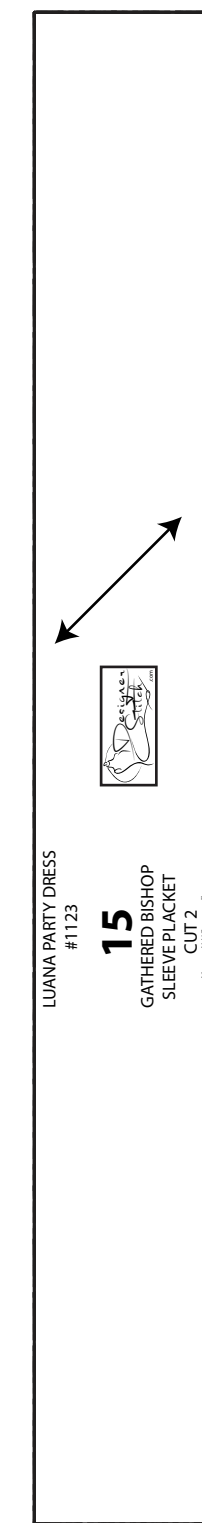
LUANA PARTY DRESS
#1123

19
GATHERED FLOUNCE SLEEVE
CUT 2
(1.5 cms (5/8") seam allowance
unless otherwise stated)

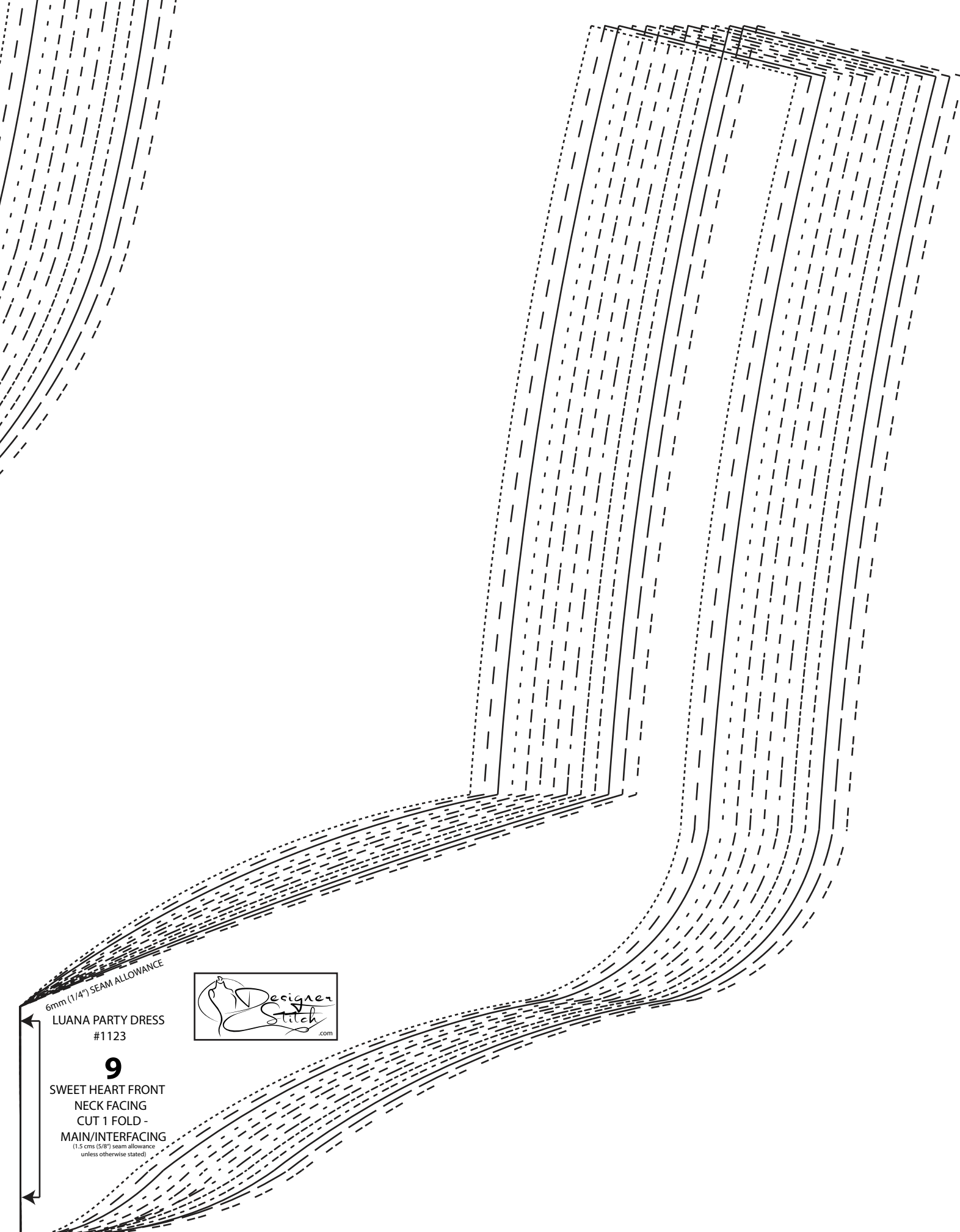
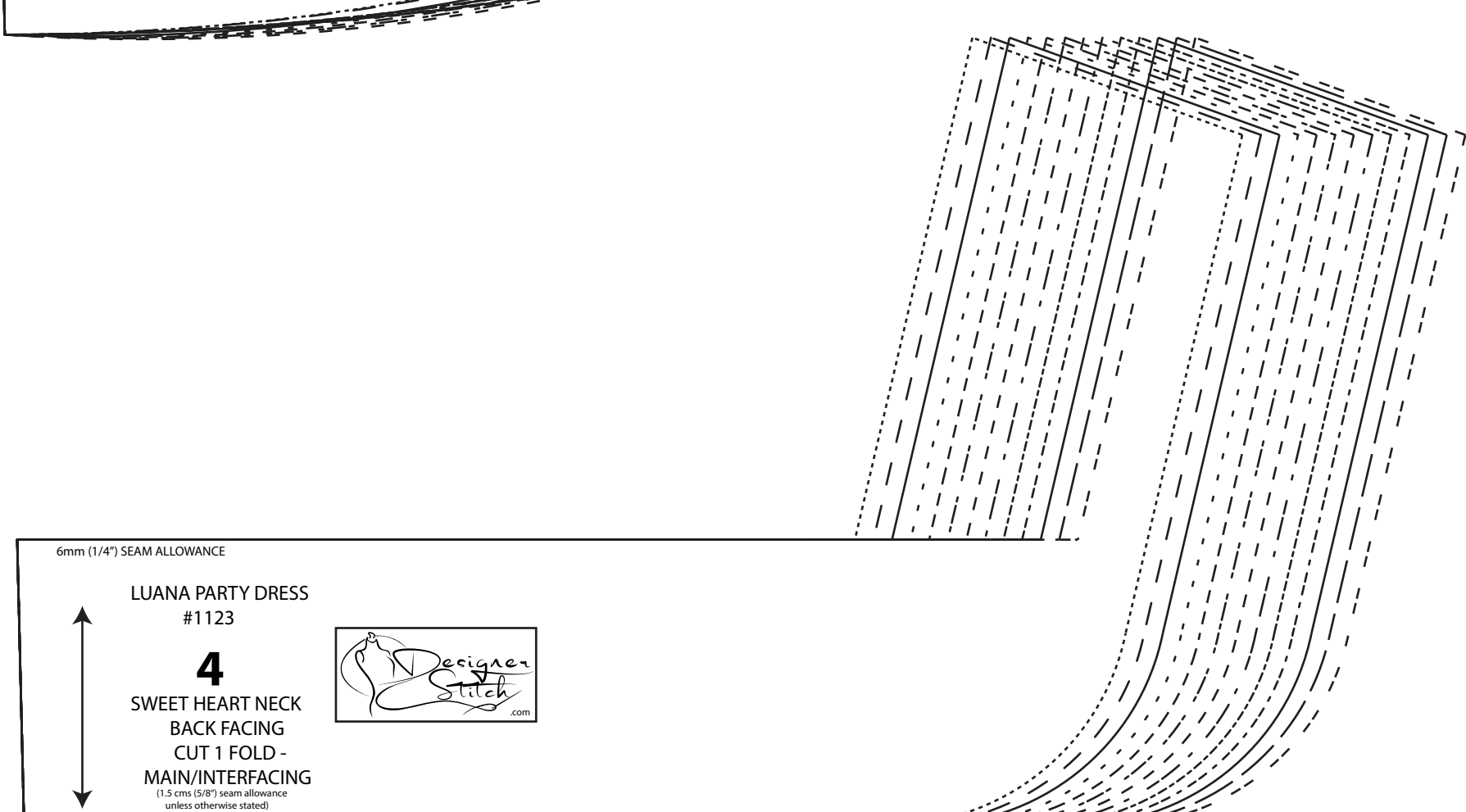
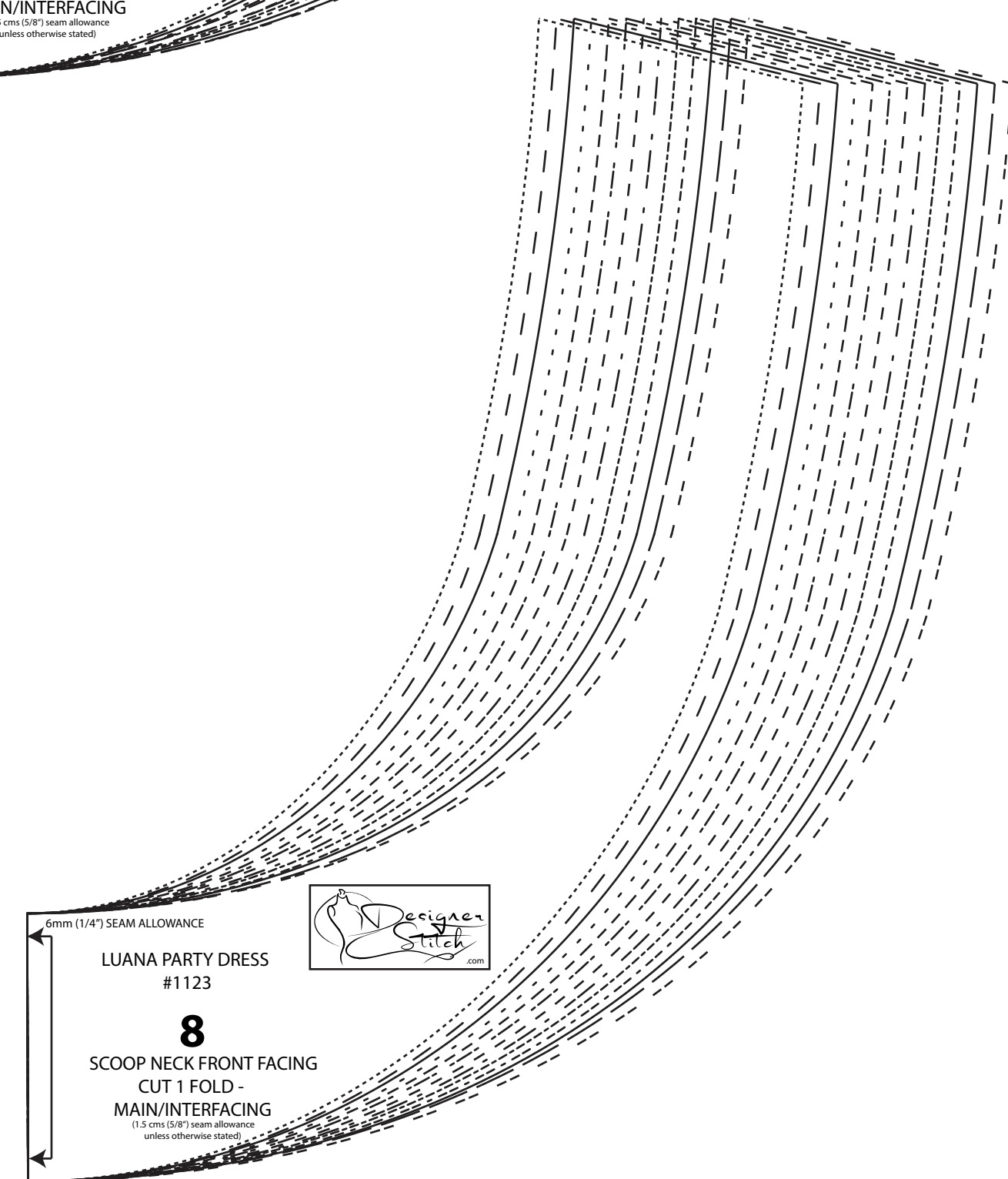
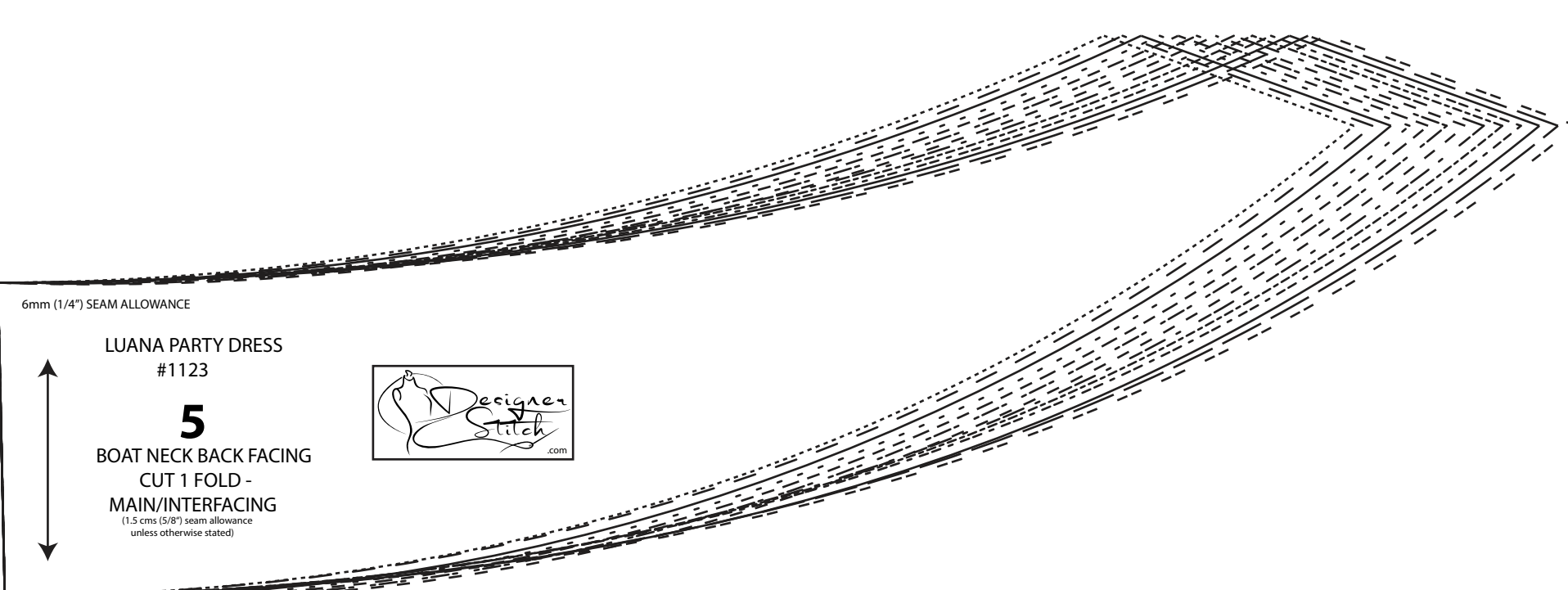
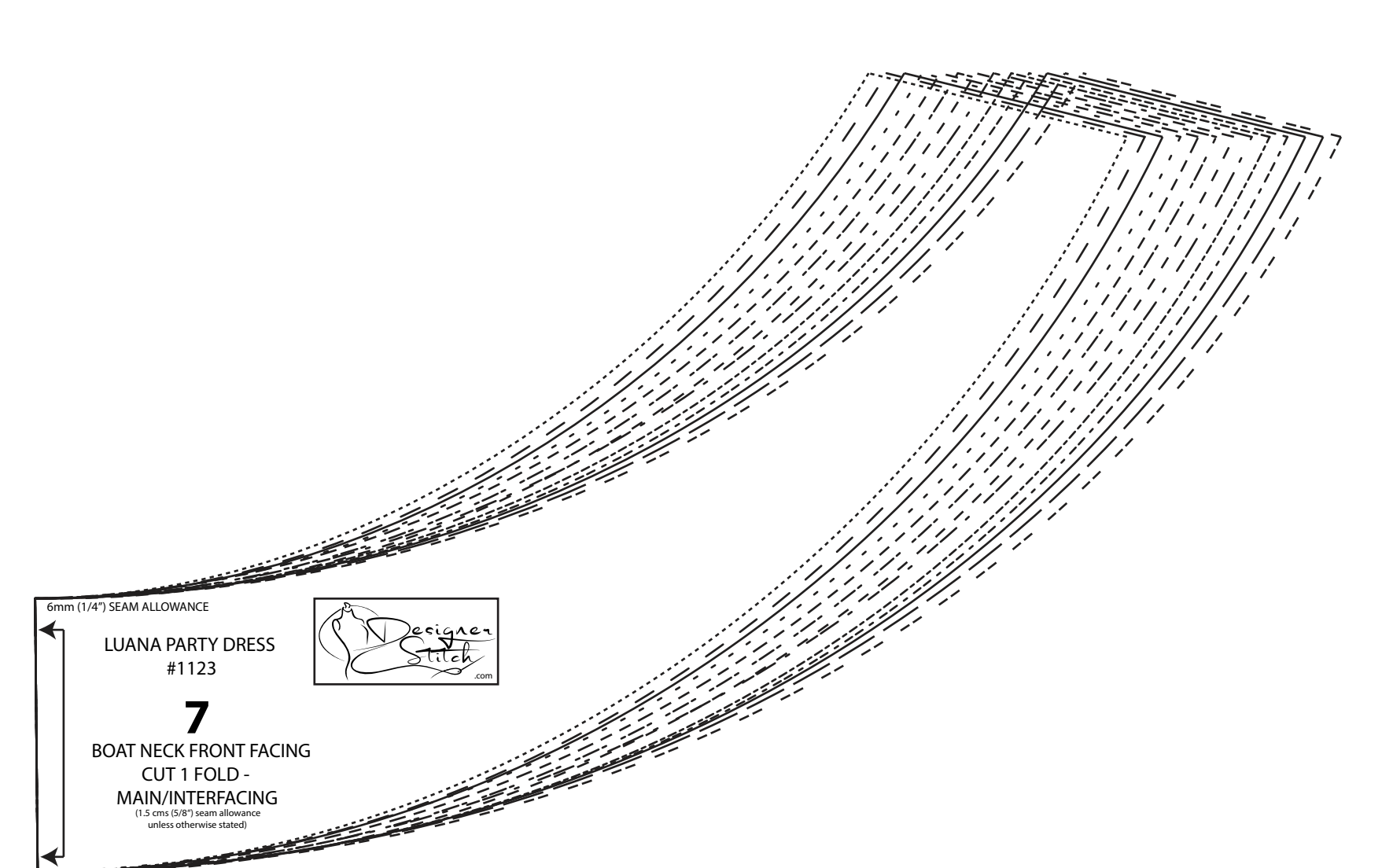
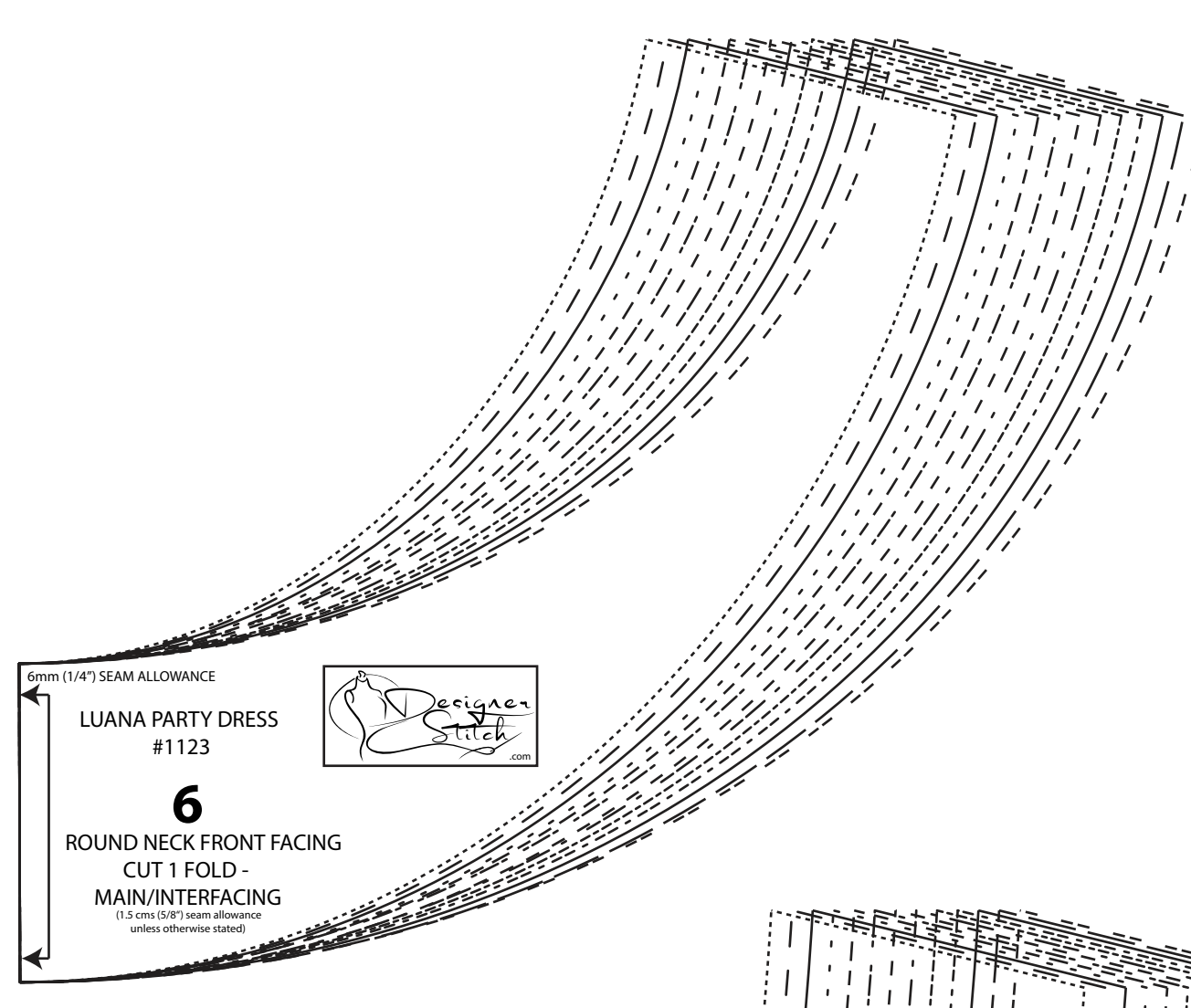
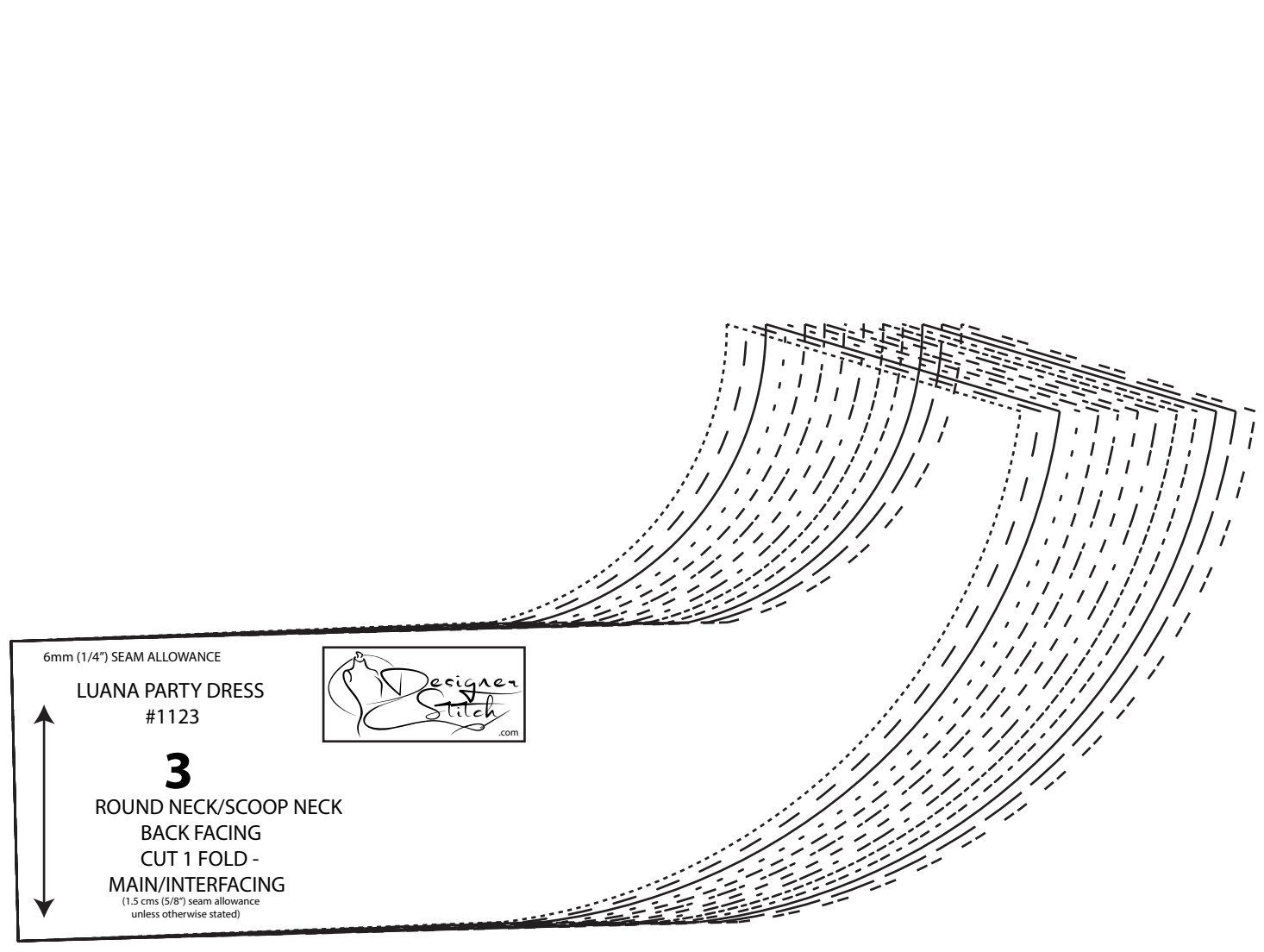
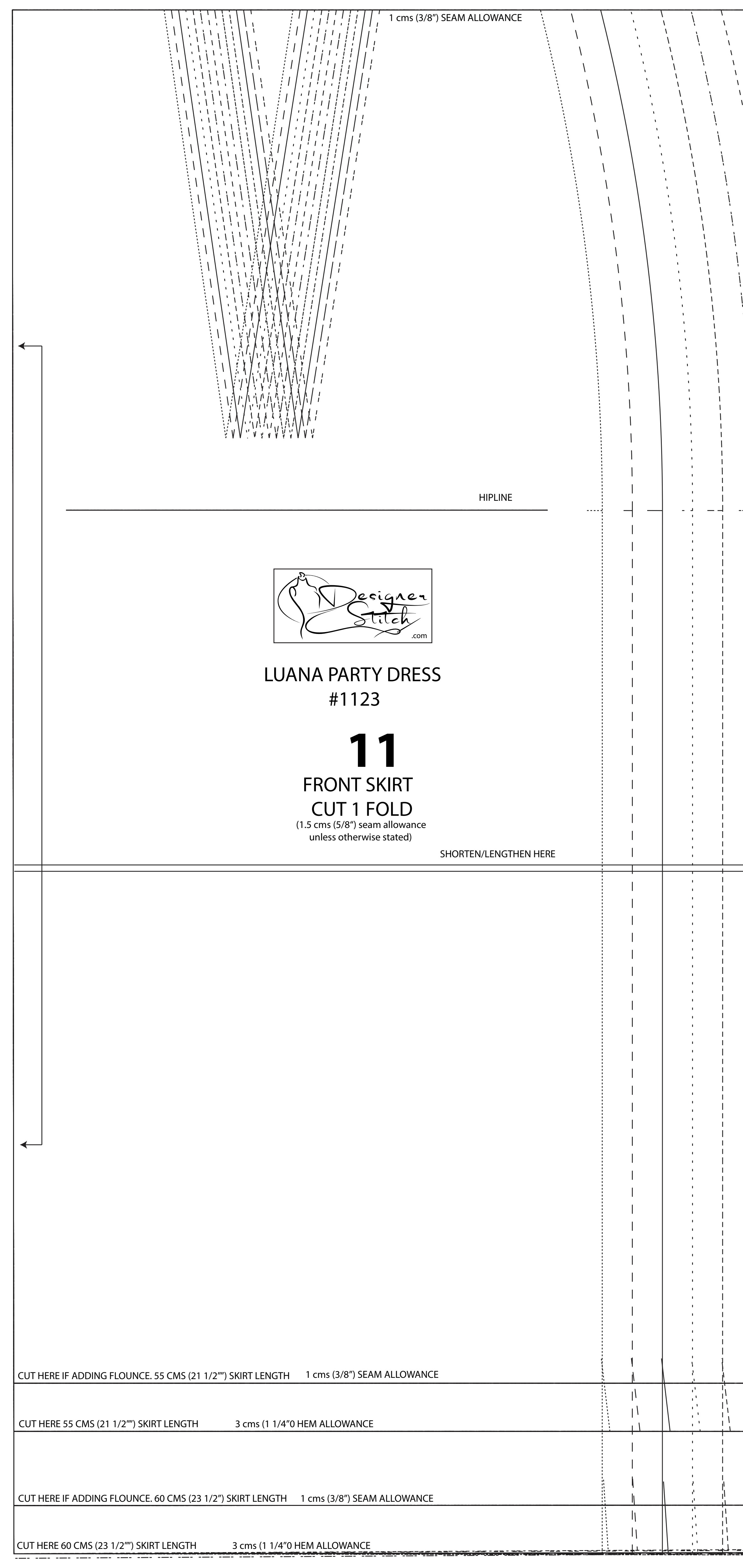
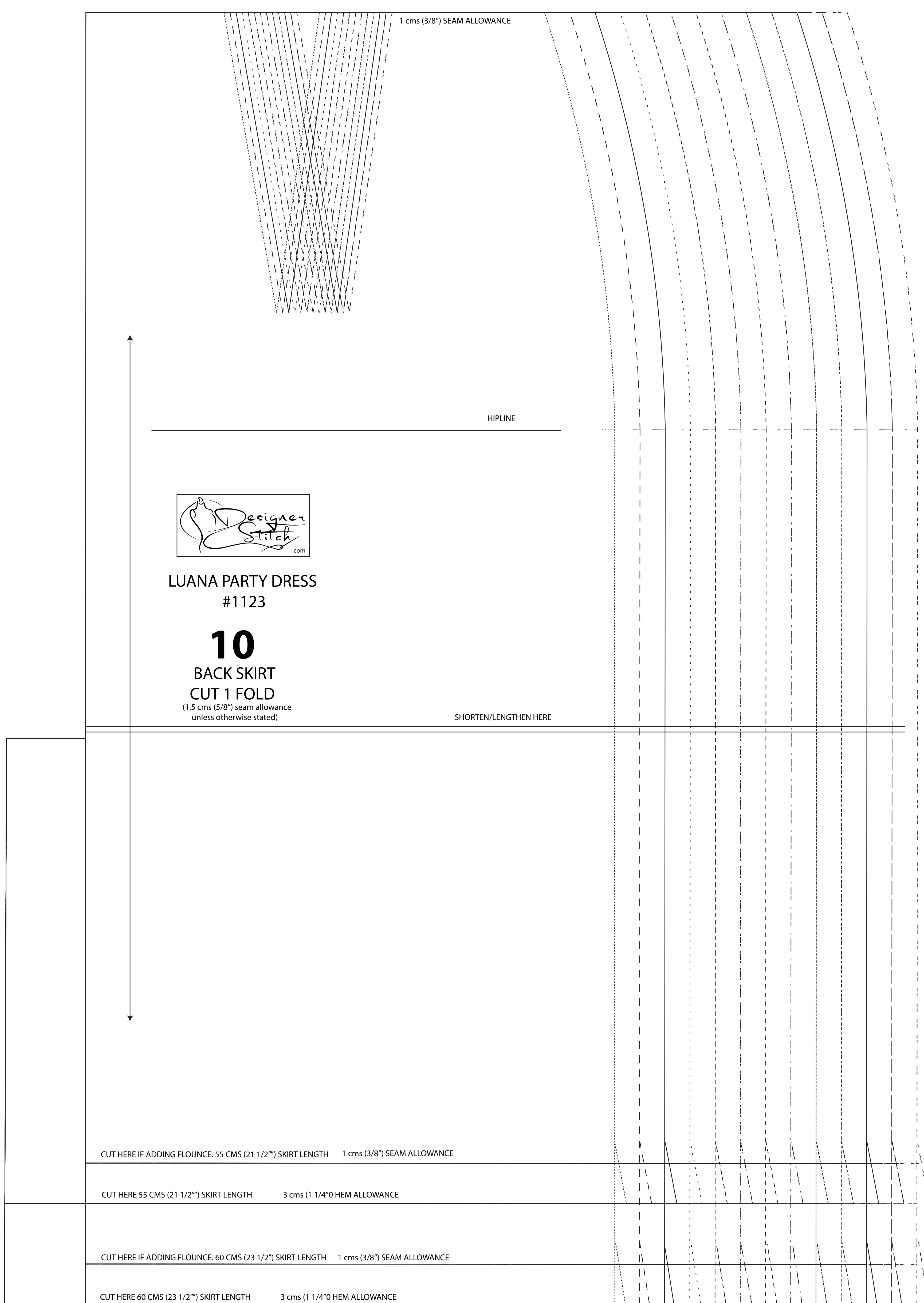
1 cm (3/8") SEAM ALLOWANCE

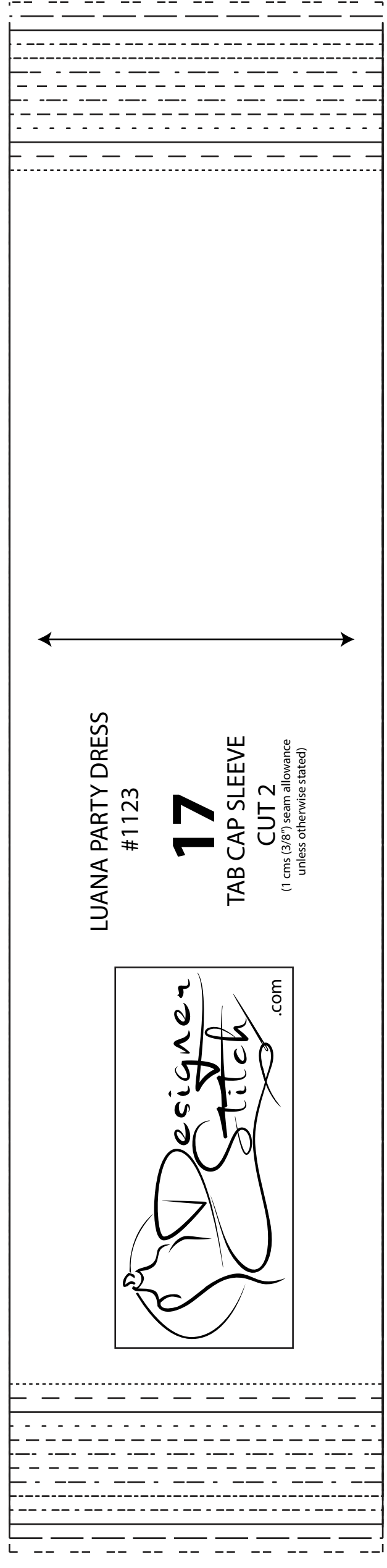
1 cm (3/8") SEAM ALLOWANCE

1 cm (3/8") SEAM ALLOWANCE



15
LUANA PARTY DRESS
#1123
GATHERED BISHOP SLEEVE
CUT 2
(1.5 cms (5/8") seam allowance
unless otherwise stated)

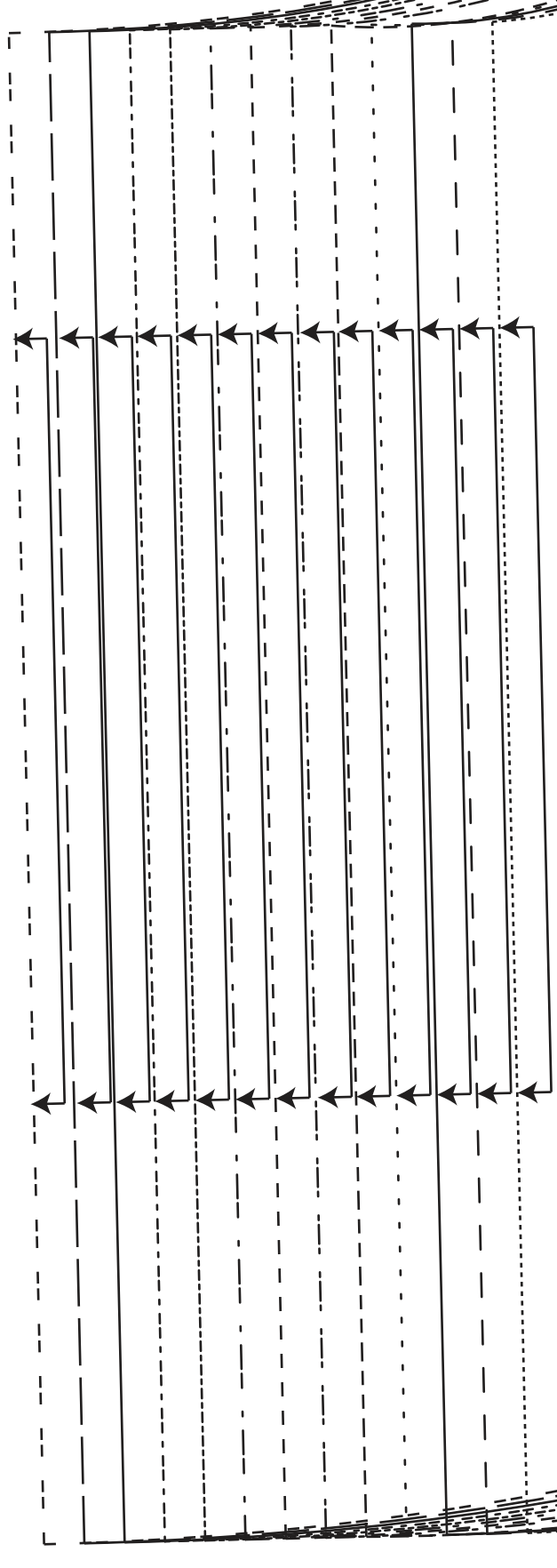




LUANA PARTY DRESS
#1123

17

TAB CAP SLEEVE
CUT 2
(1.5 cms (5/8") seam allowance
unless otherwise stated)

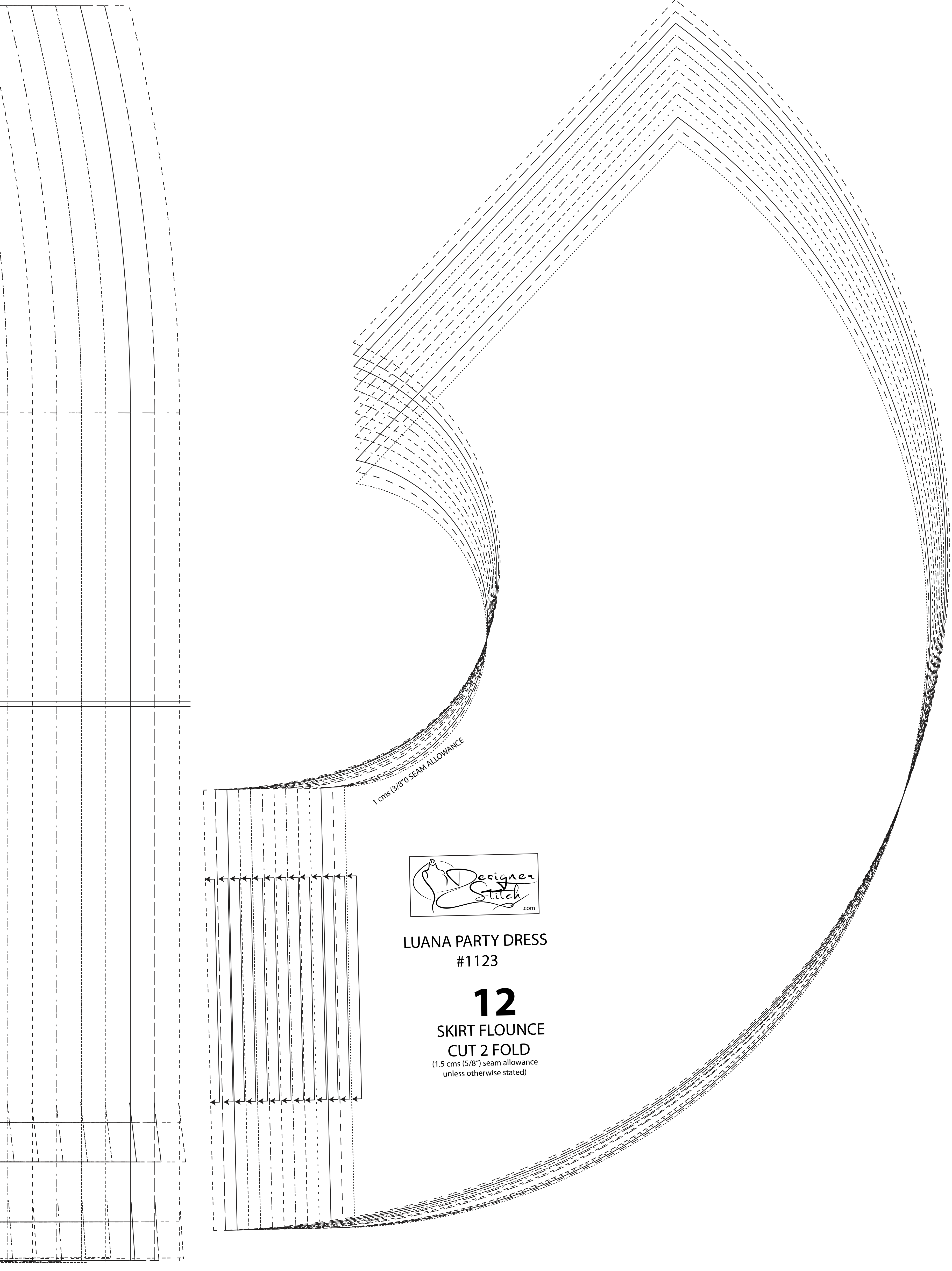


LUANA PARTY DRESS
#1123

12

SKIRT FLOUNCE
CUT 2 FOLD
(1.5 cms (5/8") seam allowance
unless otherwise stated)

1 cm (3/8") SEAM ALLOWANCE



LUANA PARTY DRESS
#1123



21

BUCKLE BELT
CUT 1
(6 cms (2 1/2") seam allowance
unless otherwise stated)

