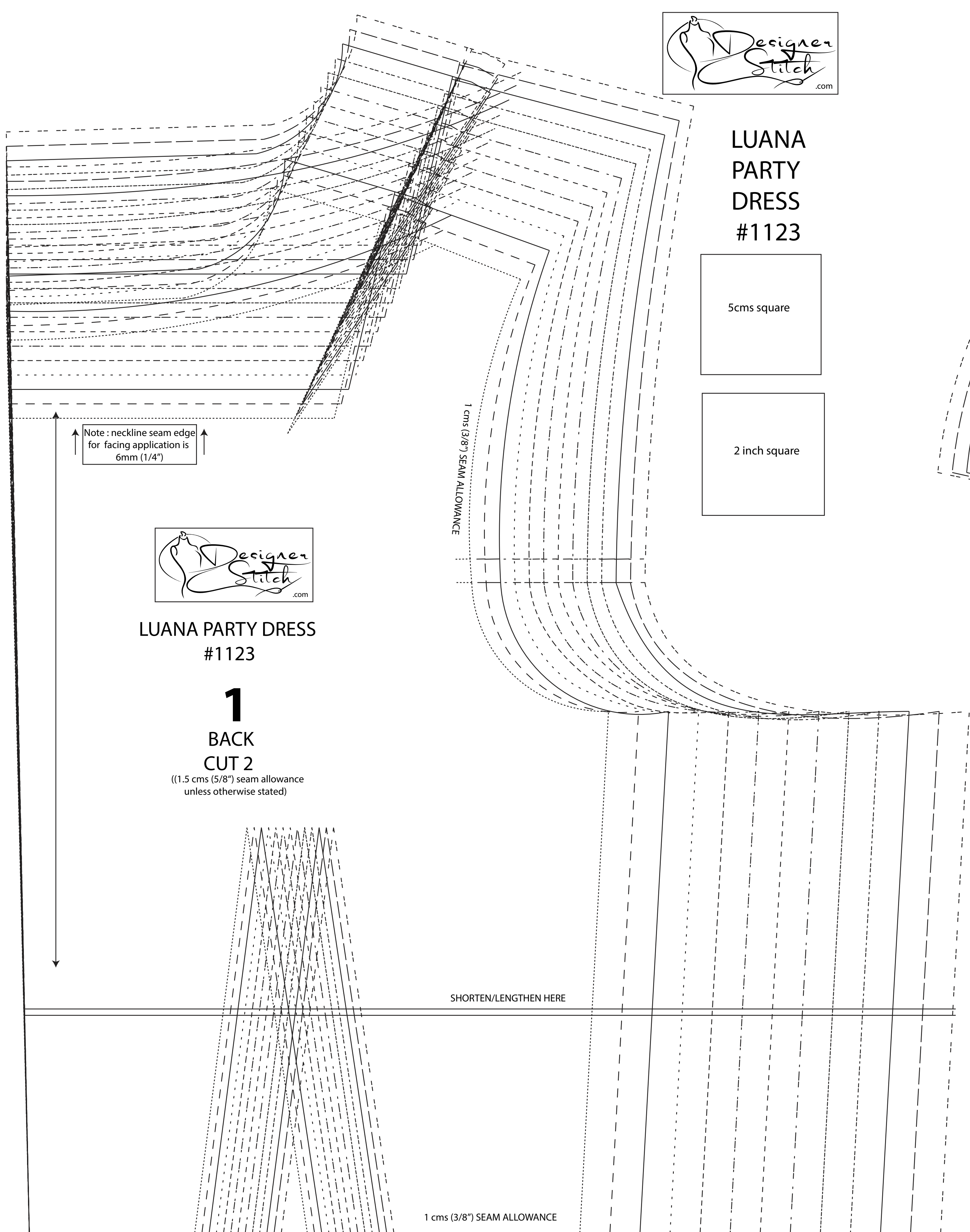




LUANA PARTY DRESS #1123

5cms square

2 inch square



Note: neckline seam edge for facing application is 6mm (1/4")

1 cms (3/8") SEAM ALLOWANCE

SHORTEN/LENGTHEN HERE

1 cms (3/8") SEAM ALLOWANCE



LUANA PARTY DRESS #1123

1

BACK CUT 2

(1.5 cms (5/8") seam allowance unless otherwise stated)



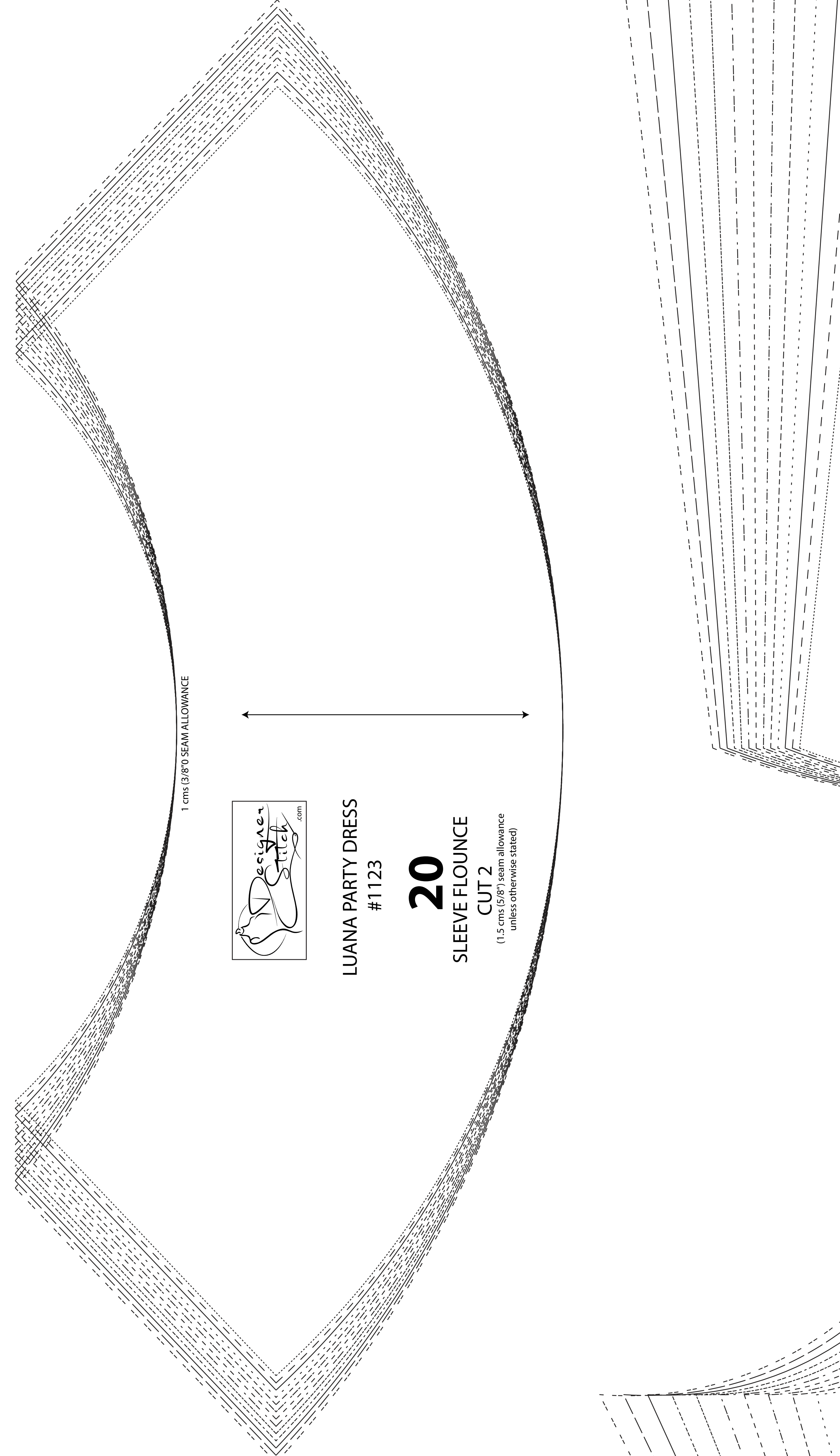
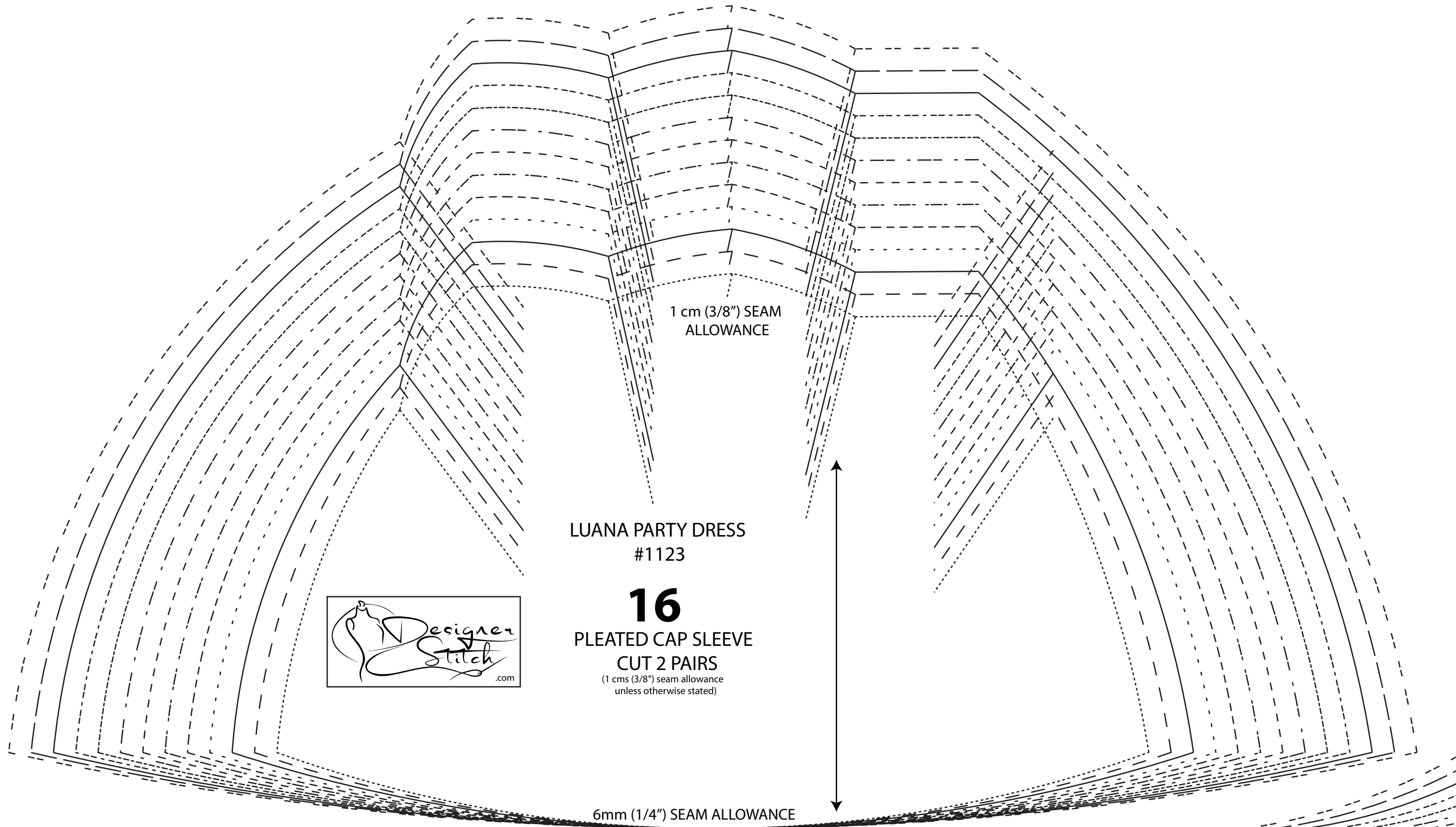
LUANA PARTY DRESS #1123

16 PLEATED CAP SLEEVE CUT 2 PAIRS

(1 cms (3/8") seam allowance unless otherwise stated)

1 cm (3/8") SEAM ALLOWANCE

6mm (1/4") SEAM ALLOWANCE



1 cms (3/8") SEAM ALLOWANCE

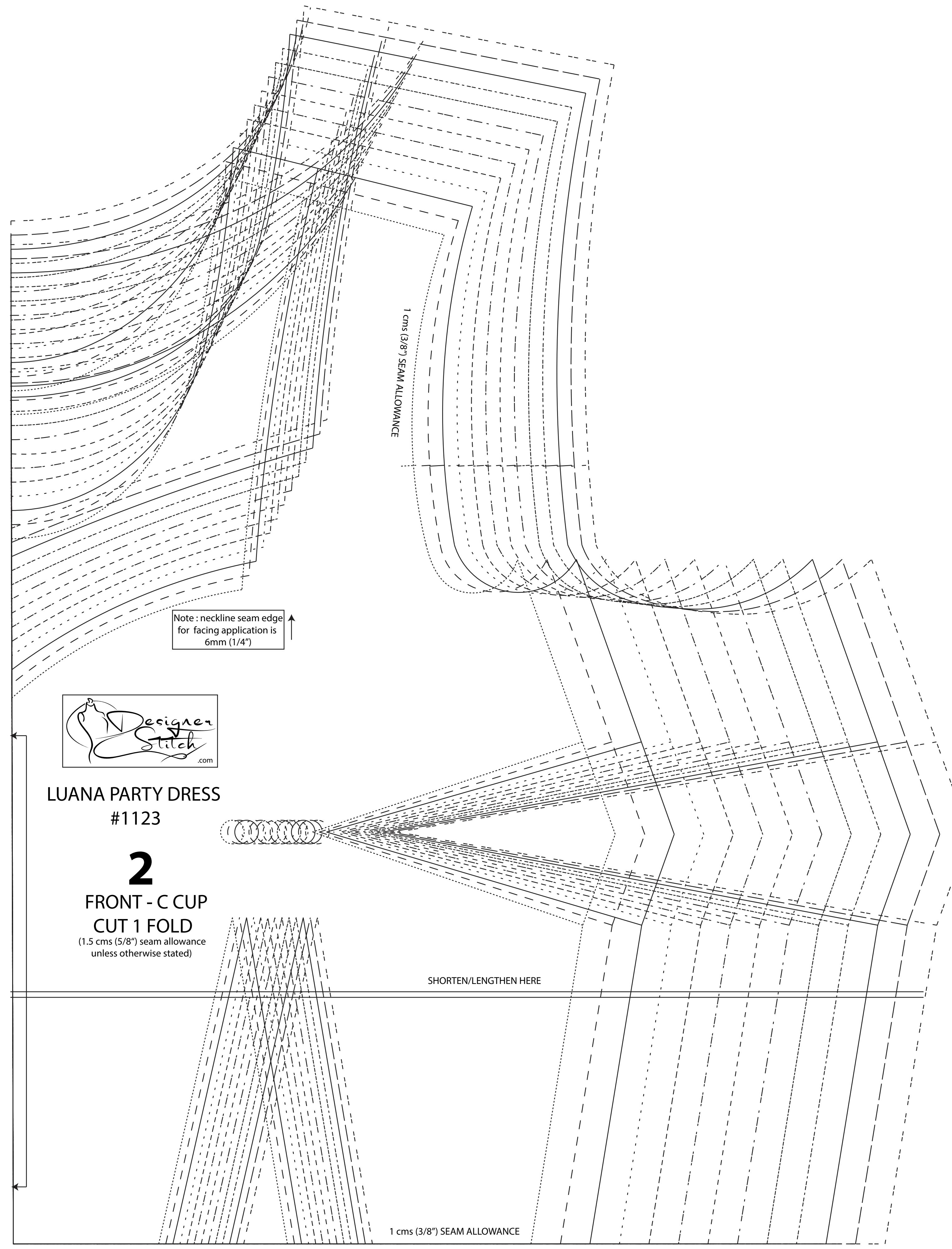


LUANA PARTY DRESS #1123

20

SLEEVE FLOUNCE CUT 2

(1.5 cms (5/8") seam allowance unless otherwise stated)



Note: neckline seam edge for facing application is 6mm (1/4")

1 cms (3/8") SEAM ALLOWANCE

SHORTEN/LENGTHEN HERE

1 cms (3/8") SEAM ALLOWANCE



LUANA PARTY DRESS #1123

2

FRONT - C CUP CUT 1 FOLD

(1.5 cms (5/8") seam allowance unless otherwise stated)



LUANA PARTY DRESS #1123

14

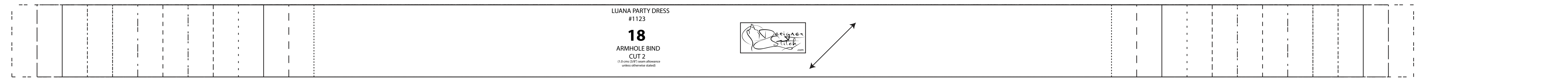
GATHERED BISHOP SLEEVE CUT 2

(6 mms (1/8") seam allowance unless otherwise stated)



LUANA PARTY DRESS #1123

18 ARMHOLE BIND CUT 2



FRONT - C Cup



LUANA PARTY DRESS
#1123

13
GATHERED BISHOP SLEEVE
CUT 2
(1.5 cms (5/8") seam allowance
unless otherwise stated)

1 cm (3/8") SEAM ALLOWANCE

1 cm (3/8") SEAM ALLOWANCE

6mm (1/4") SEAM ALLOWANCE



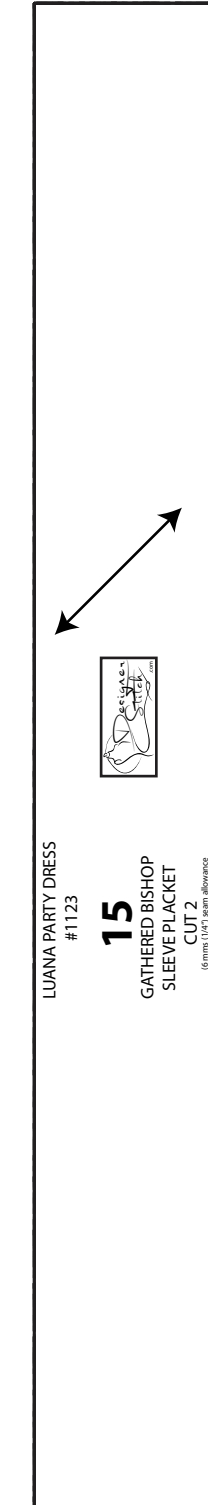
LUANA PARTY DRESS
#1123

19
GATHERED FLOUNCE SLEEVE
CUT 2
(1.5 cms (5/8") seam allowance
unless otherwise stated)

1 cm (3/8") SEAM ALLOWANCE

1 cm (3/8") SEAM ALLOWANCE

1 cm (3/8") SEAM ALLOWANCE





LUANA PARTY DRESS
#1123

10
BACK SKIRT
CUT 1 FOLD
(1.5 cms (5/8") seam allowance
unless otherwise stated)

1 cms (3/8") SEAM ALLOWANCE

HIPLINE

SHORTEN/LENGTHEN HERE

CUT HERE IF ADDING FLOUNCE. 55 CMS (21 1/2") SKIRT LENGTH 1 cms (3/8") SEAM ALLOWANCE

CUT HERE 55 CMS (21 1/2") SKIRT LENGTH 3 cms (1 1/4") HEM ALLOWANCE

CUT HERE IF ADDING FLOUNCE. 60 CMS (23 1/2") SKIRT LENGTH 1 cms (3/8") SEAM ALLOWANCE

CUT HERE 60 CMS (23 1/2") SKIRT LENGTH 3 cms (1 1/4") HEM ALLOWANCE



LUANA PARTY DRESS
#1123

11
FRONT SKIRT
CUT 1 FOLD
(1.5 cms (5/8") seam allowance
unless otherwise stated)

1 cms (3/8") SEAM ALLOWANCE

HIPLINE

SHORTEN/LENGTHEN HERE

CUT HERE IF ADDING FLOUNCE. 55 CMS (21 1/2") SKIRT LENGTH 1 cms (3/8") SEAM ALLOWANCE

CUT HERE 55 CMS (21 1/2") SKIRT LENGTH 3 cms (1 1/4") HEM ALLOWANCE

CUT HERE IF ADDING FLOUNCE. 60 CMS (23 1/2") SKIRT LENGTH 1 cms (3/8") SEAM ALLOWANCE

CUT HERE 60 CMS (23 1/2") SKIRT LENGTH 3 cms (1 1/4") HEM ALLOWANCE

1.5 cms (5/8") SEAM ALLOWANCE
LUANA PARTY DRESS
#1123
3
ROUND NECK/SCOP NECK
BACK FACING
CUT 1 FOLD -
MAIN/INTERFACING

1.5 cms (5/8") SEAM ALLOWANCE
LUANA PARTY DRESS
#1123
6
ROUND NECK FRONT FACING
CUT 1 FOLD -
MAIN/INTERFACING

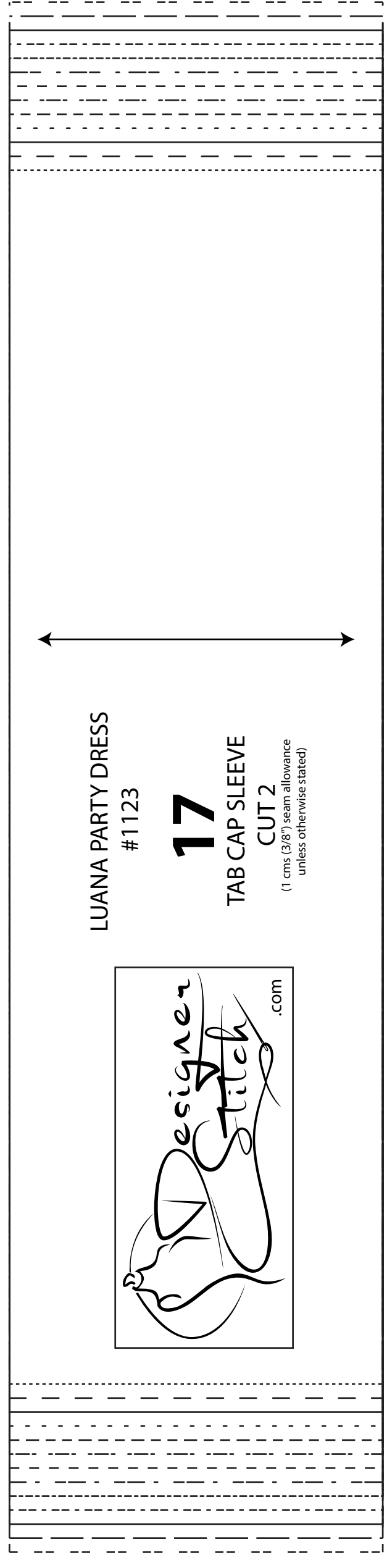
1.5 cms (5/8") SEAM ALLOWANCE
LUANA PARTY DRESS
#1123
7
BOAT NECK FRONT FACING
CUT 1 FOLD -
MAIN/INTERFACING

1.5 cms (5/8") SEAM ALLOWANCE
LUANA PARTY DRESS
#1123
5
BOAT NECK BACK FACING
CUT 1 FOLD -
MAIN/INTERFACING

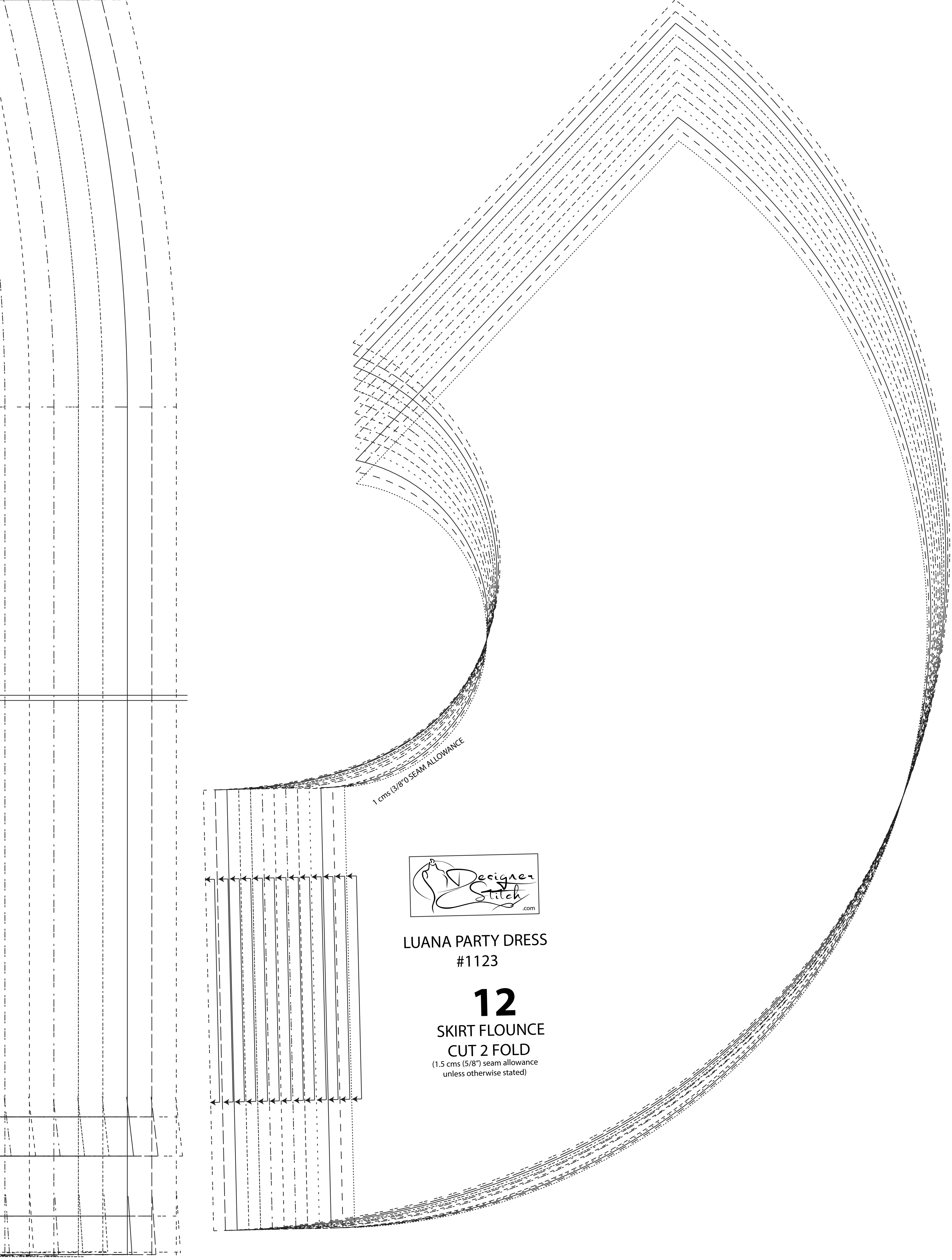
1.5 cms (5/8") SEAM ALLOWANCE
LUANA PARTY DRESS
#1123
8
SCOOP NECK FRONT FACING
CUT 1 FOLD -
MAIN/INTERFACING

1.5 cms (5/8") SEAM ALLOWANCE
LUANA PARTY DRESS
#1123
4
SWEETHEART NECK
BACK FACING
CUT 1 FOLD -
MAIN/INTERFACING

1.5 cms (5/8") SEAM ALLOWANCE
LUANA PARTY DRESS
#1123
9
SWEETHEART FRONT
NECK FACING
CUT 1 FOLD -
MAIN/INTERFACING



LUANA PARTY DRESS
#1123
17
TAB CAP SLEEVE
CUT 2
(1.5 cms (5/8") seam allowance
unless otherwise stated)



LUANA PARTY DRESS
#1123
12
SKIRT FLOUNCE
CUT 2 FOLD
(1.5 cms (5/8") seam allowance
unless otherwise stated)



1 cm (5/8") SEAM ALLOWANCE

LUANA PARTY DRESS
#1123

21
BUCKLE BELT
CUT 1
(6 cms (2 1/4") seam allowance
unless otherwise stated)

