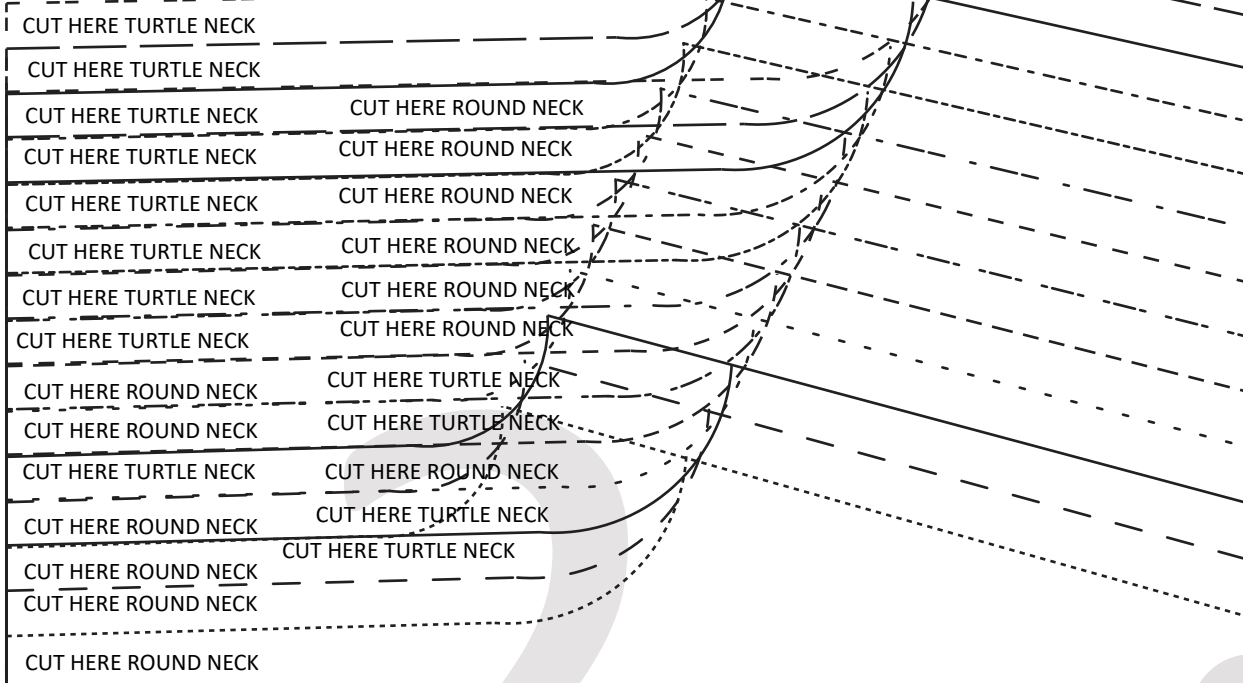


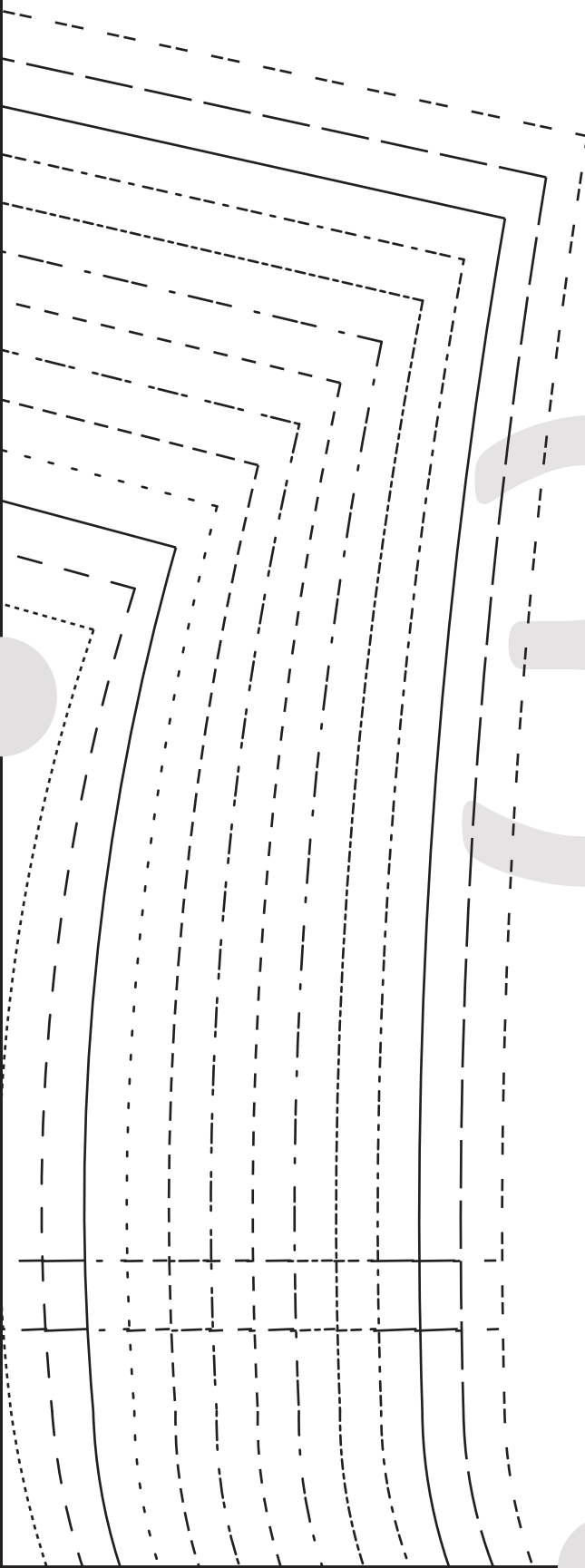
PRINT TILING TEMPLATE GUIDE FOR SIZE SPECIFIC CHOICE
 TRIM PRINT AT HOME PATTERN



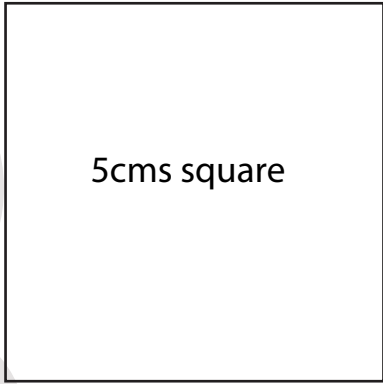


NOVA TWIST TOP

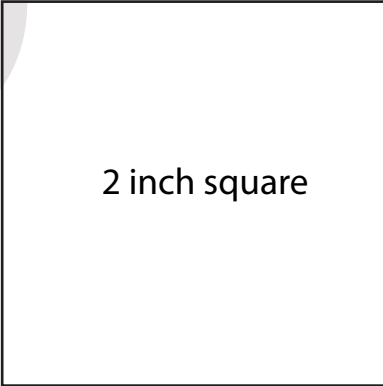
#0324



3



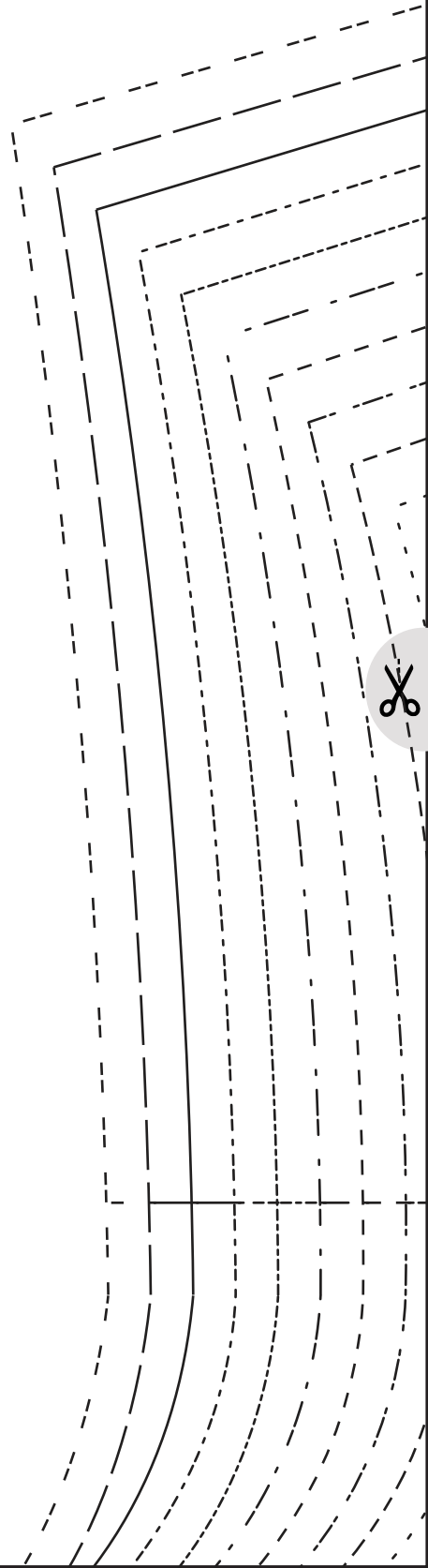
5cms square

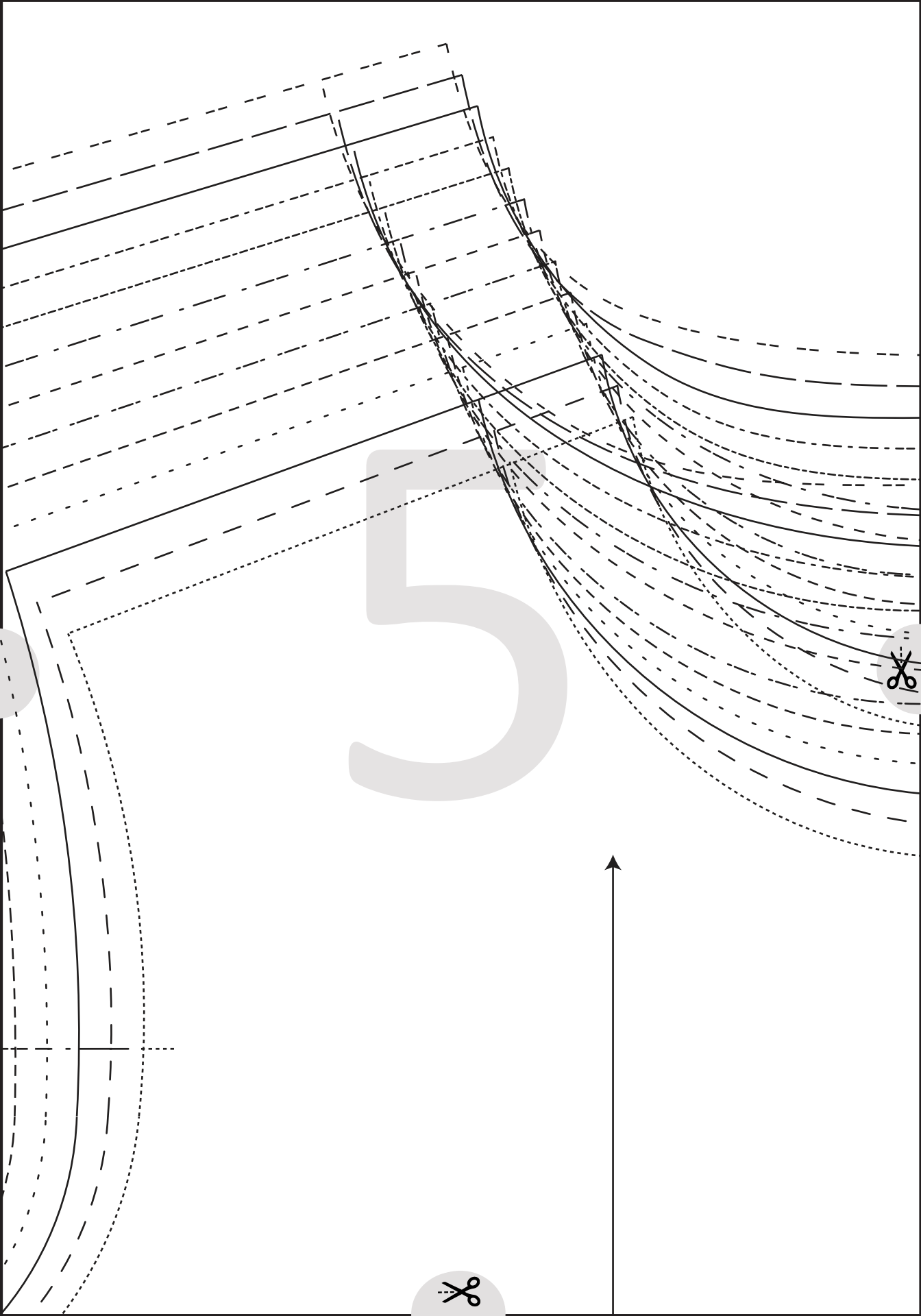


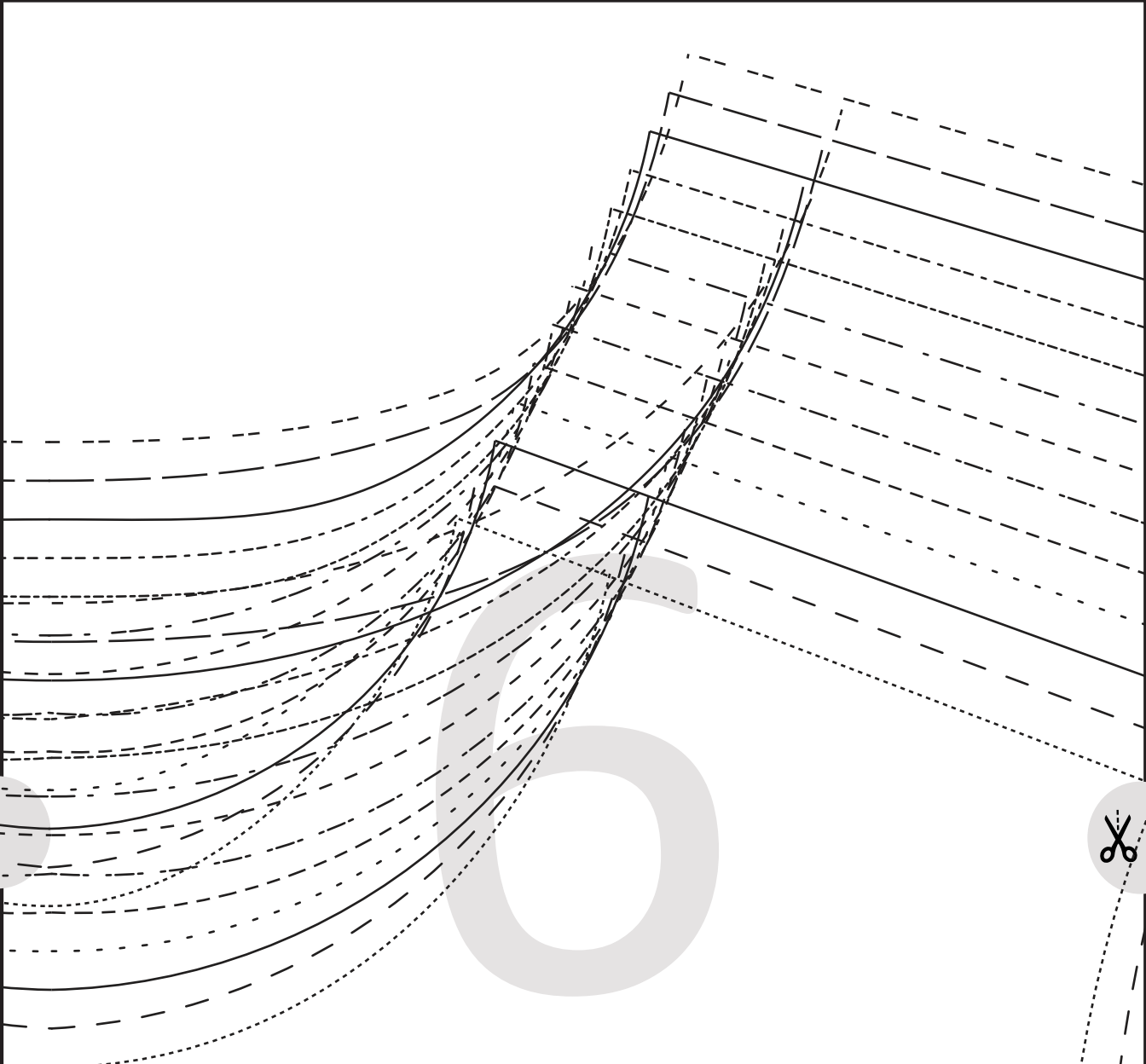
2 inch square



4



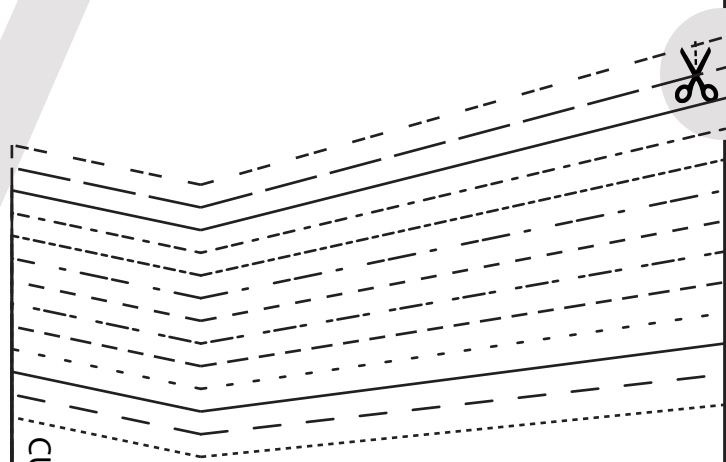
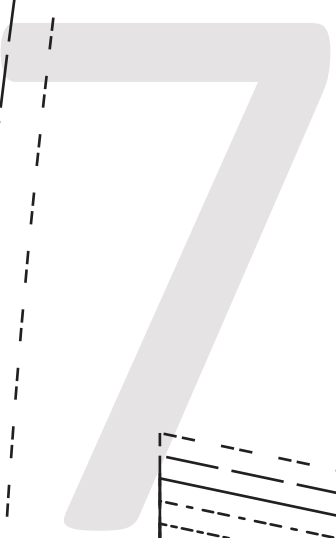
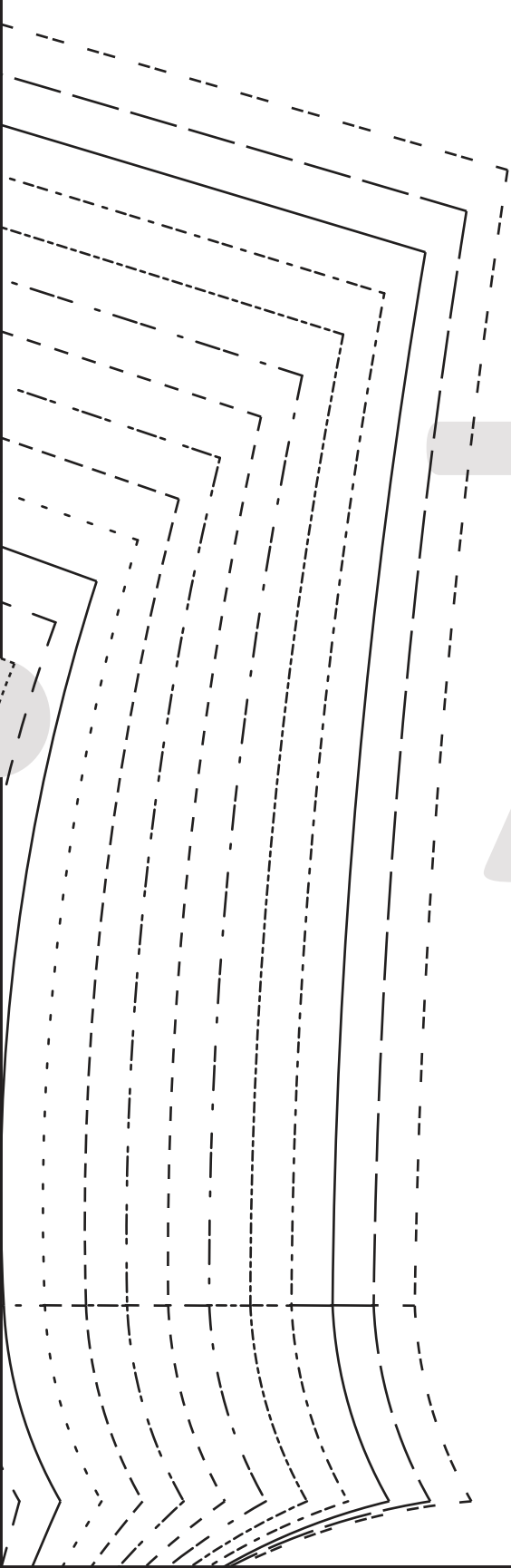




NOVA TWIST TOP

#0224





CUT HERE LONG SLEEVE LENGTH. HEM ALL

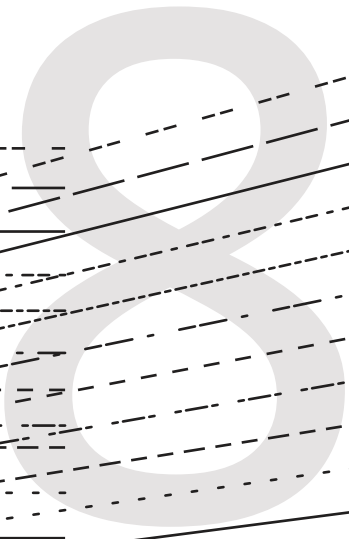


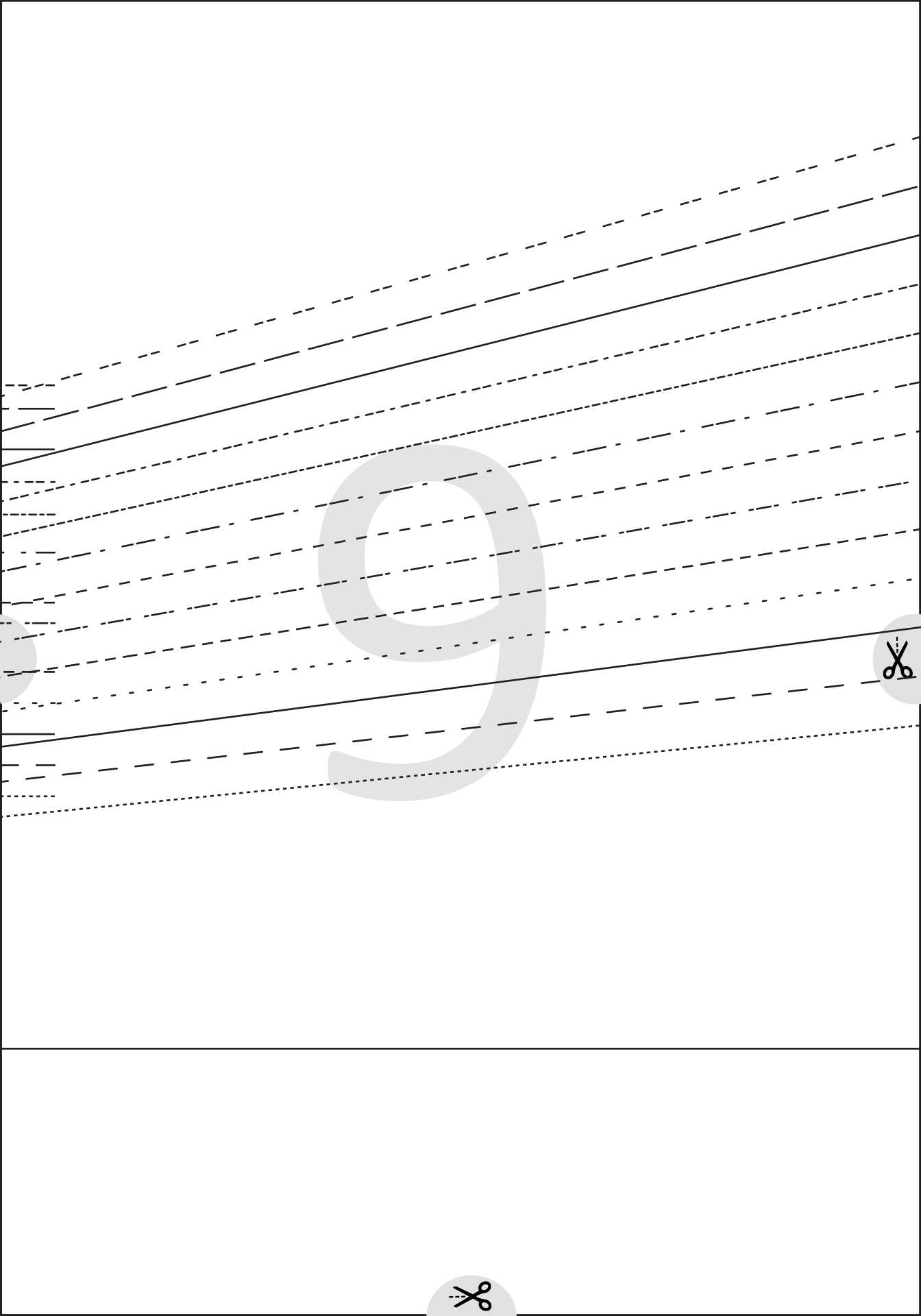


CUT HERE ELBOW LENGTH. HEM ALLOWANCE 2.5 cm



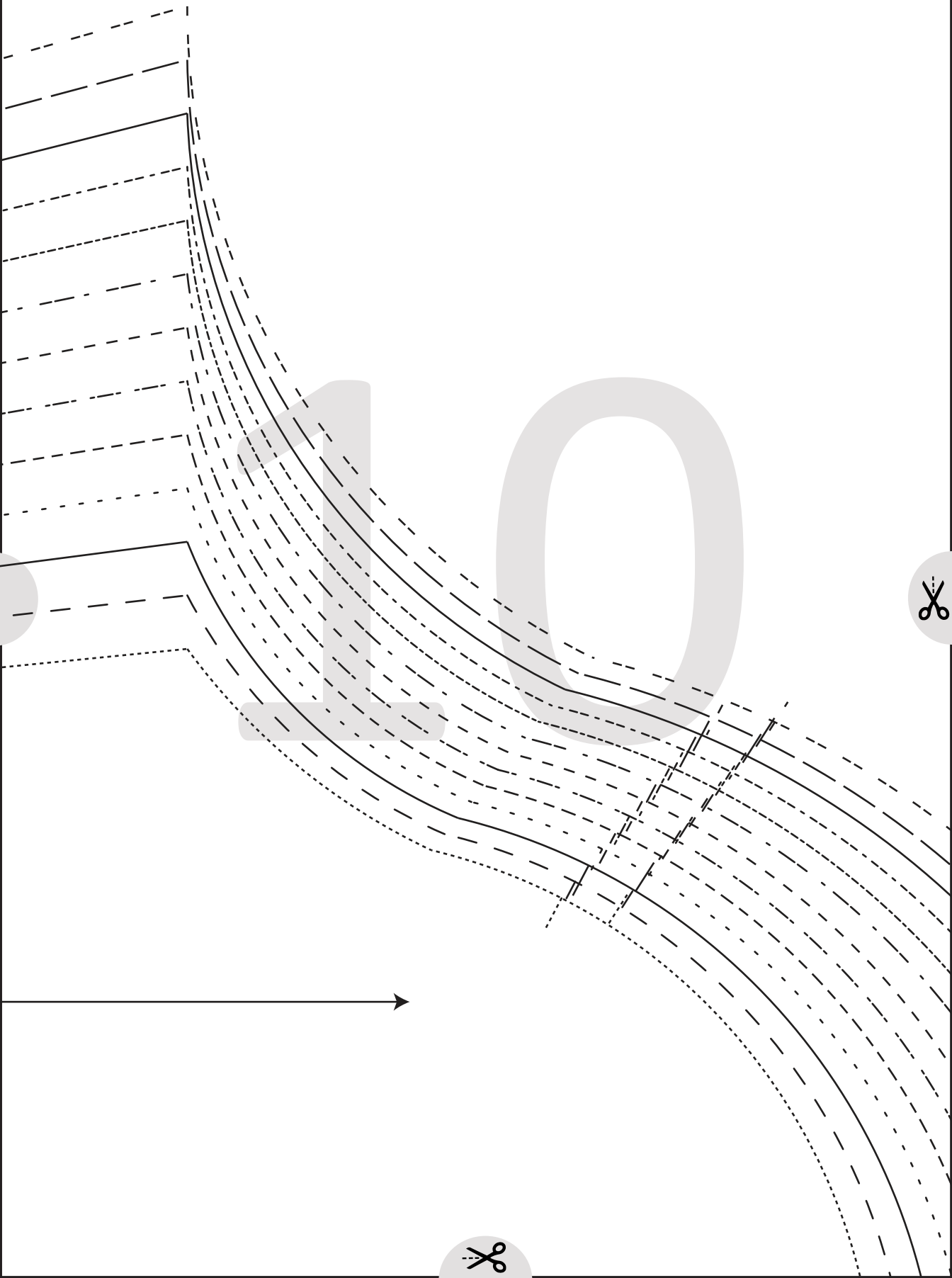
CUT HERE 3/4'S LENGTH. HEM ALLOWANCE 2.5



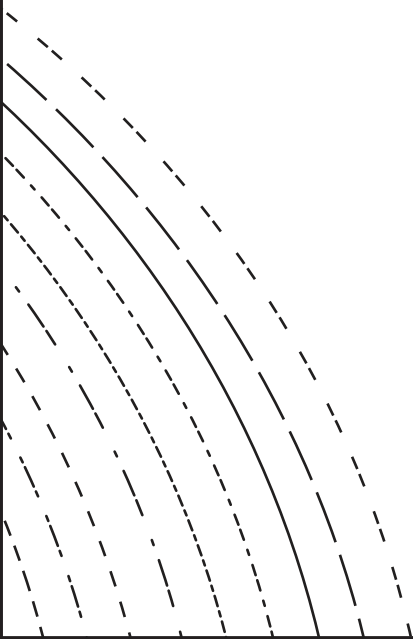


9





1 1



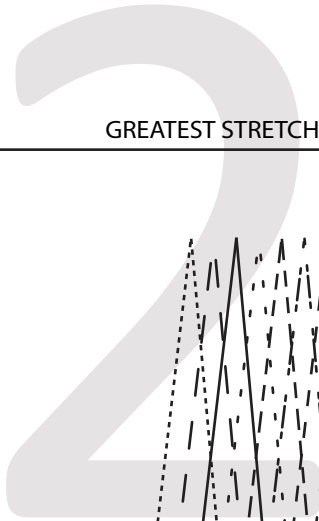
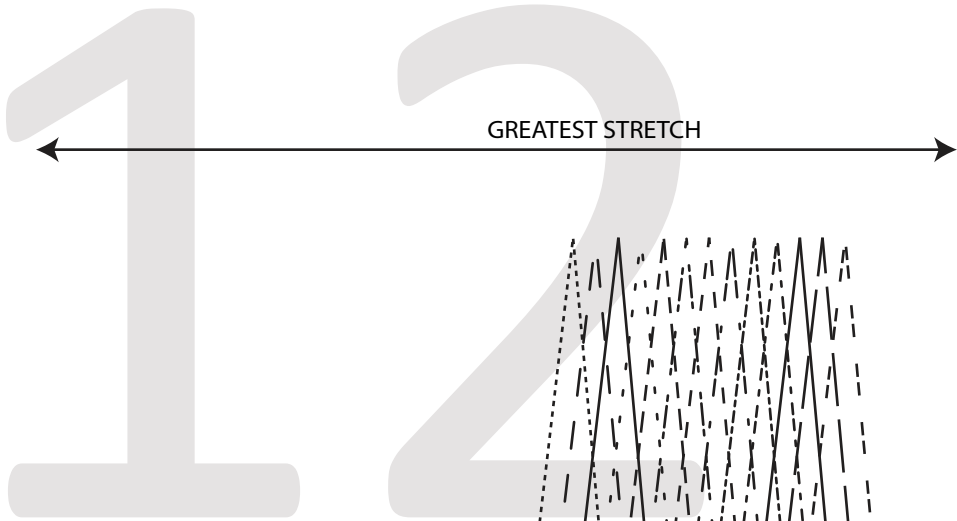
NOVA TWIST TOP
#0324

1

BACK

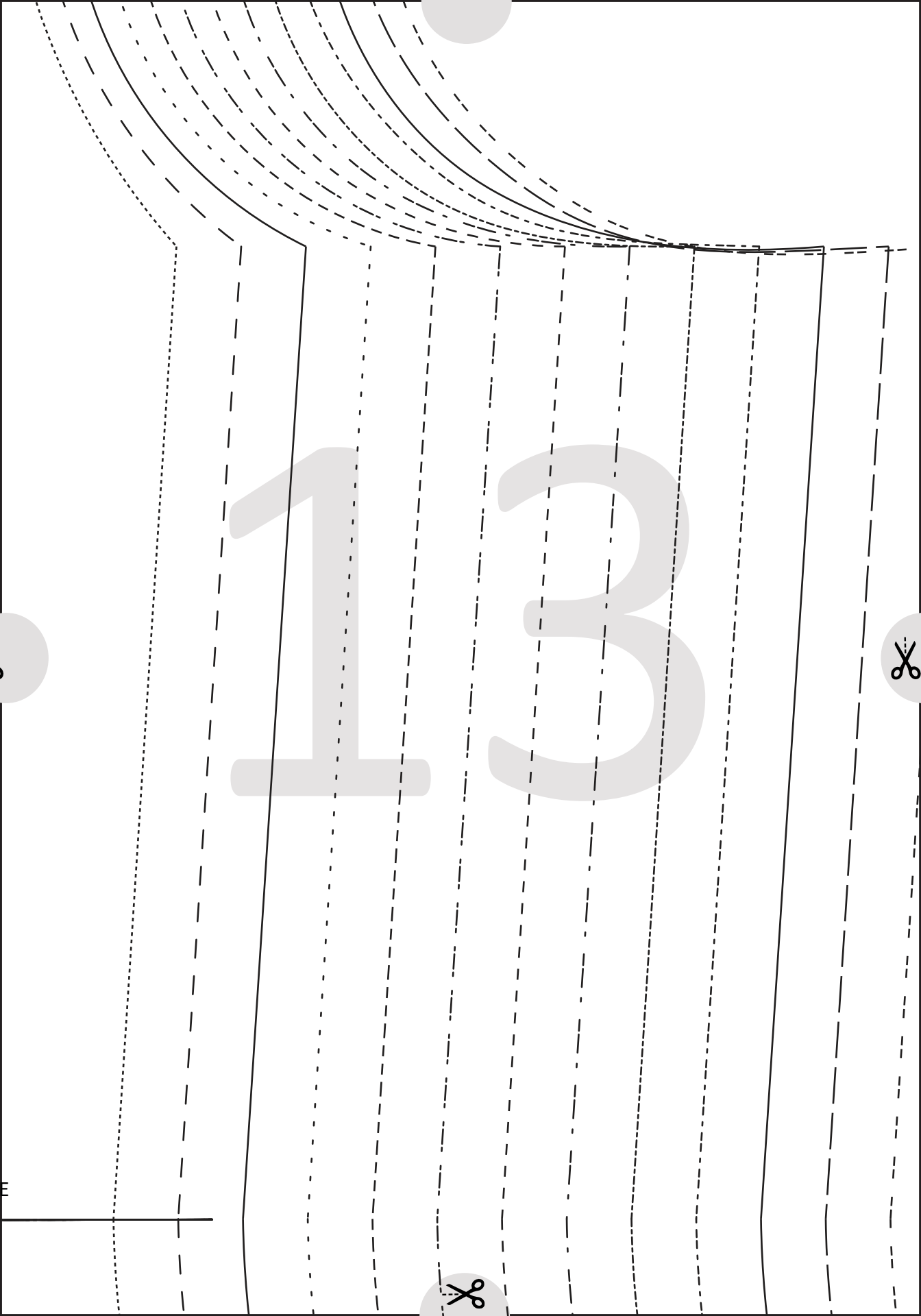
CUT 1 FOLD

(6mms (1/4") seam allowance unless otherwise stated)



WAISTLIN

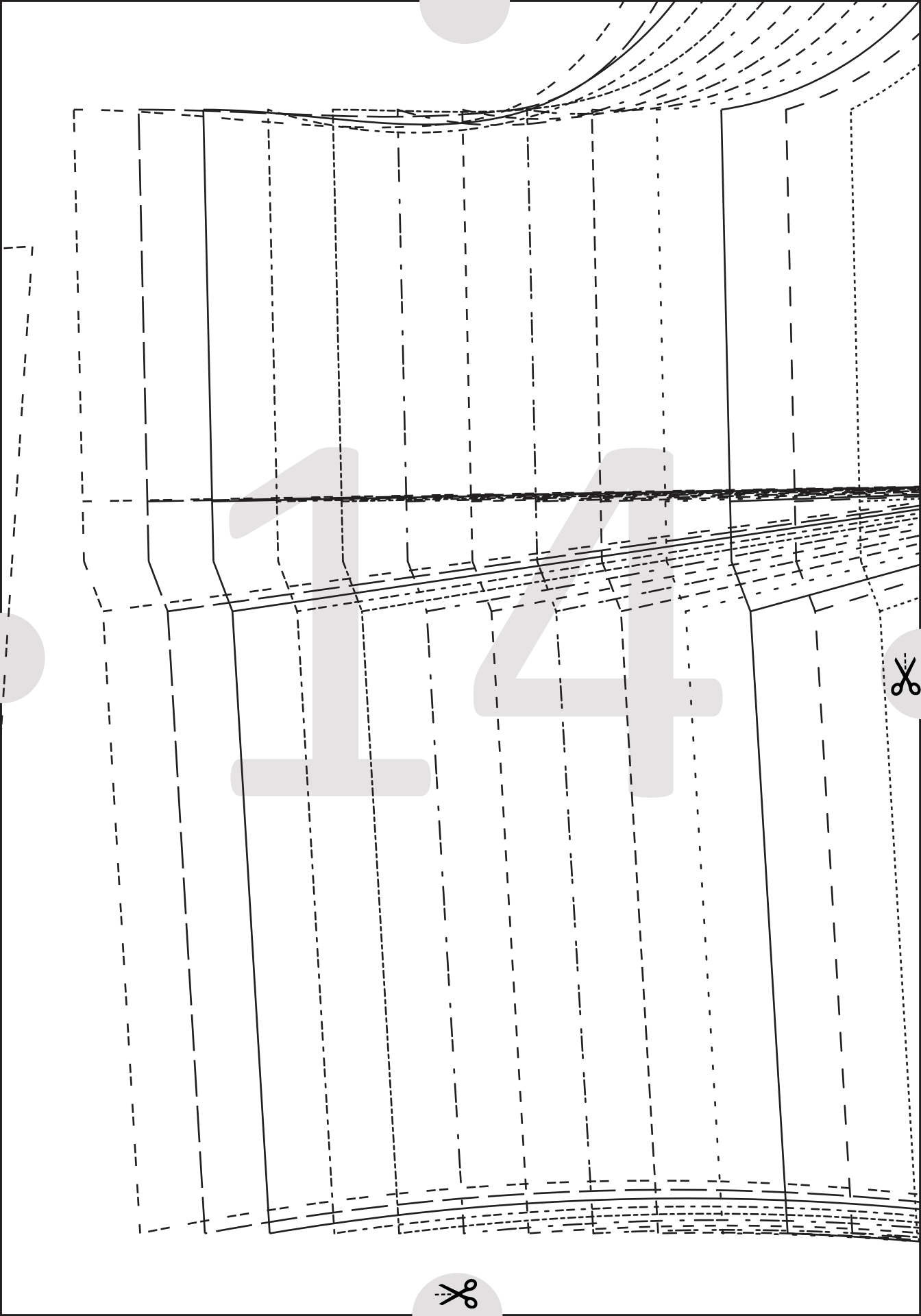




1

3

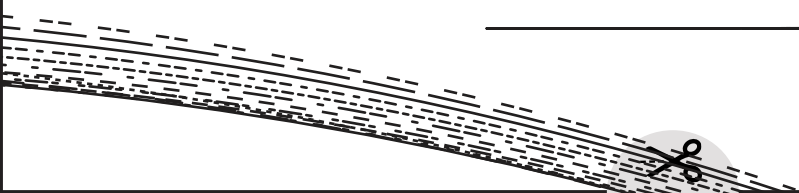
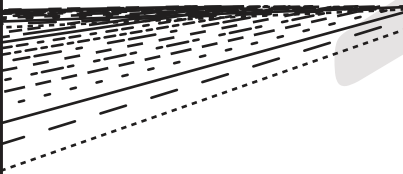




14



15



2

FRONT - A/B CUP

CUT 1

CUT THIS WAY UP

(6mms (1/4") seam allowance unless otherwise stated)

GREATEST STRETCH



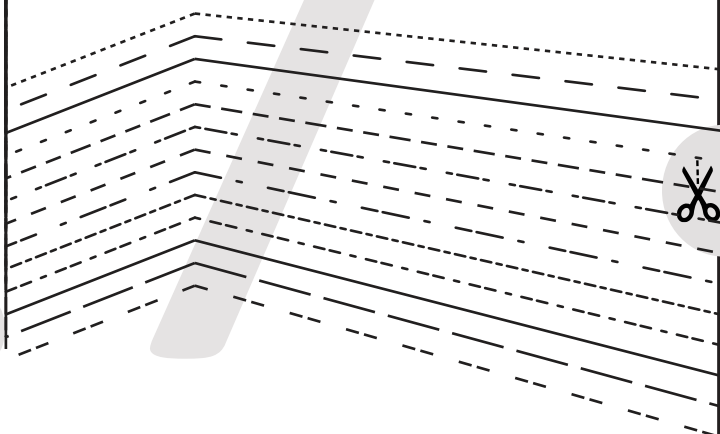
16

WAISTLINE



OWANCE 2.5 cms (1")

17



5 (1")



cms (1")

18



NOVA TWIST TOP

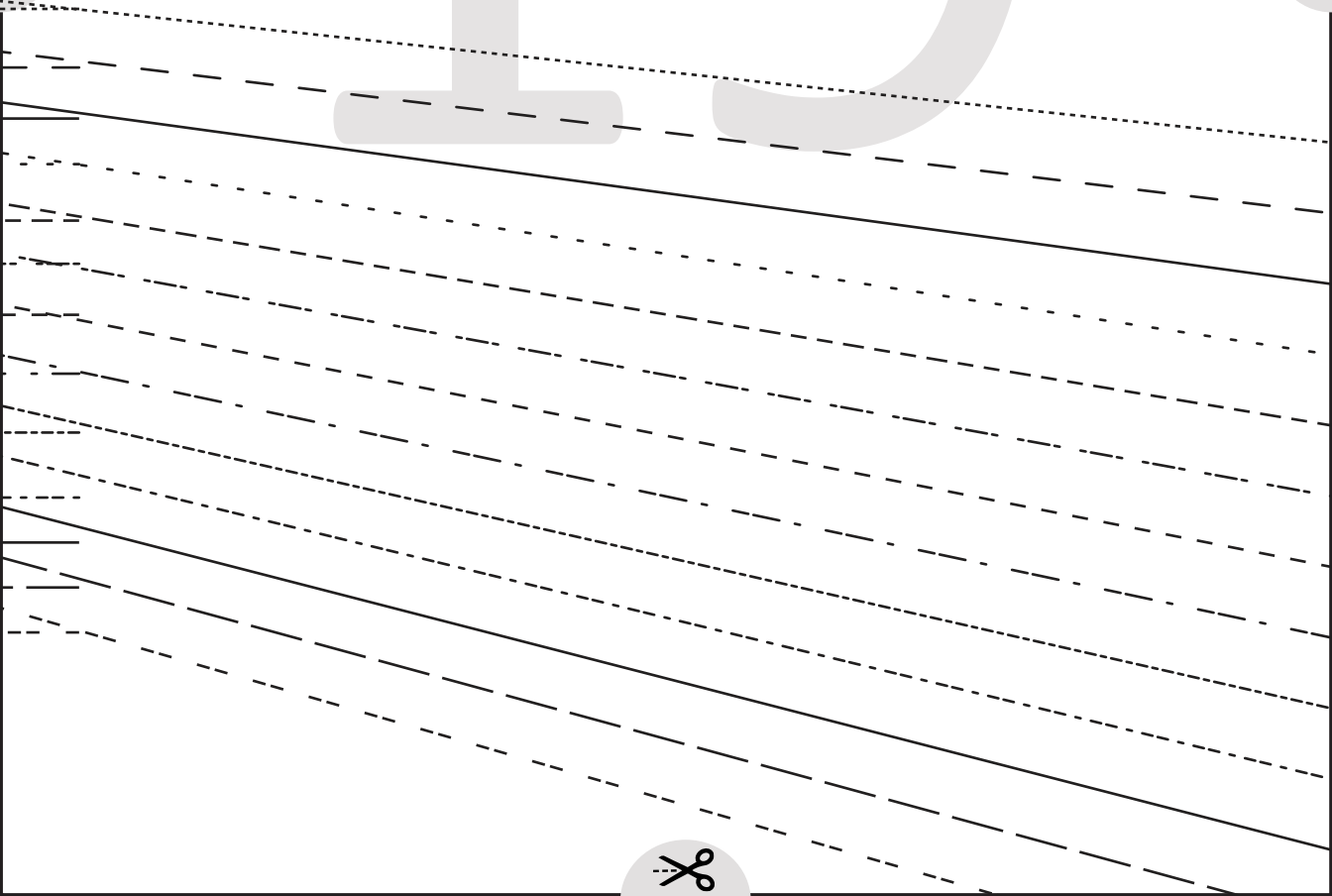
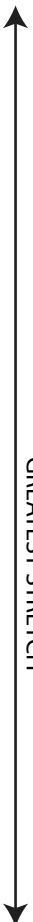
#0324

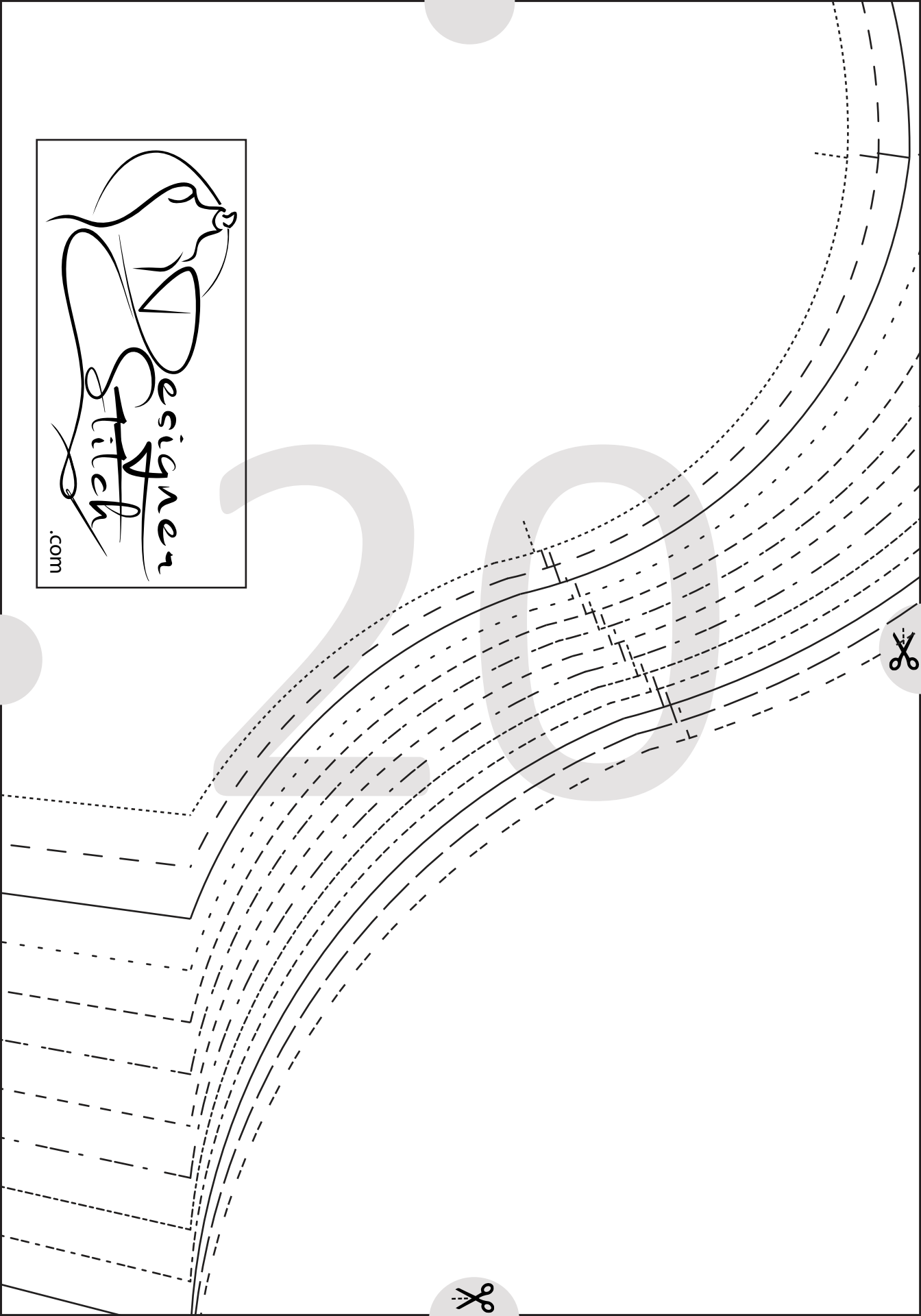
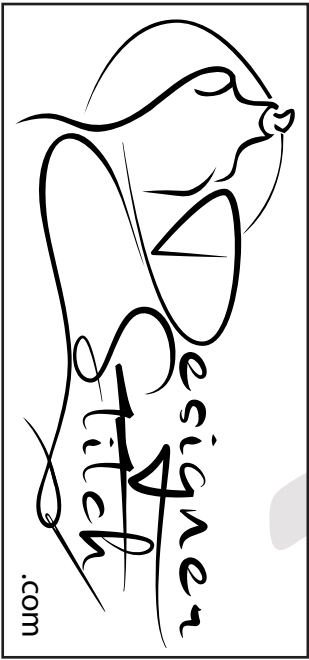
4

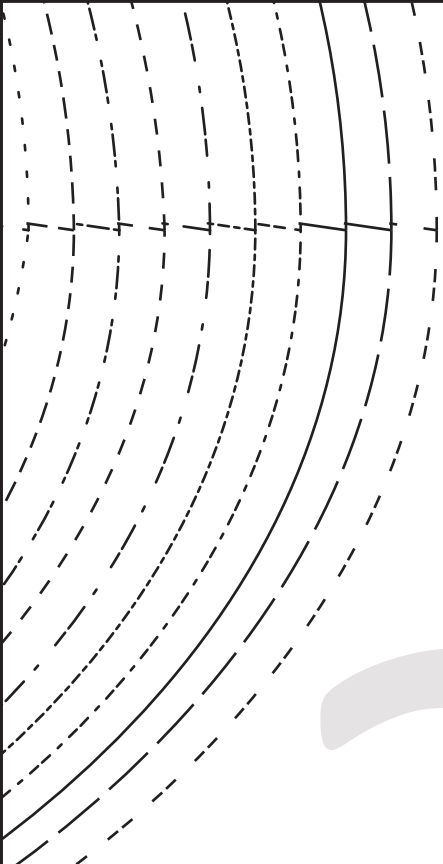
SLEEVE CUT 2

(6mm (1/4") seam allowance unless otherwise stated)

GREATEST STRETCH



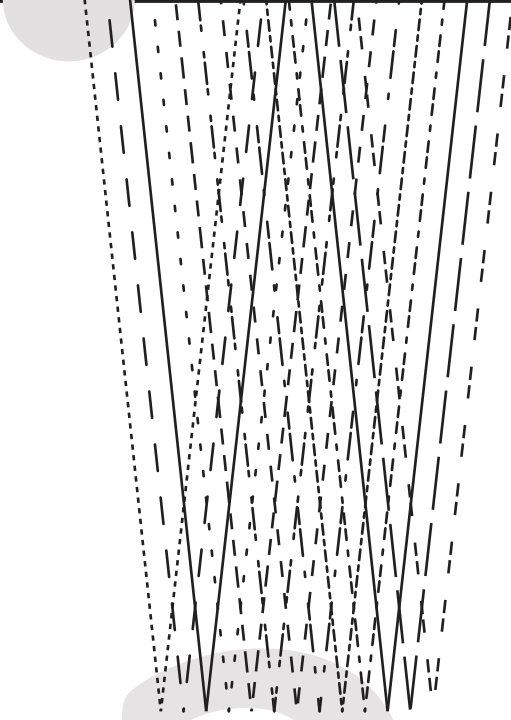




21



22

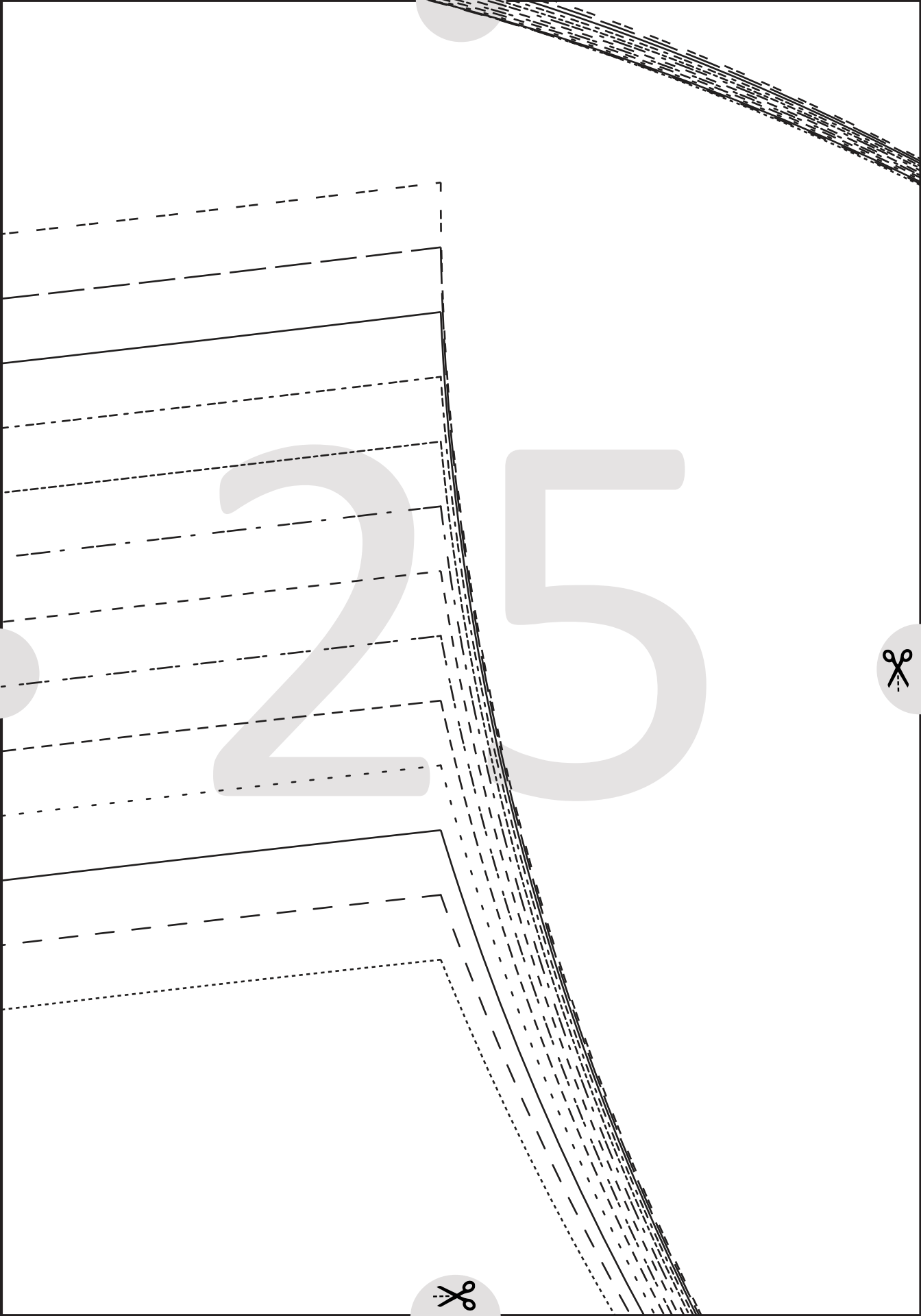


23



24





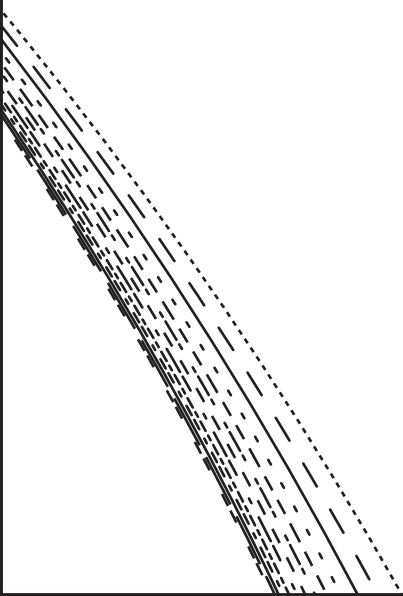
25



26

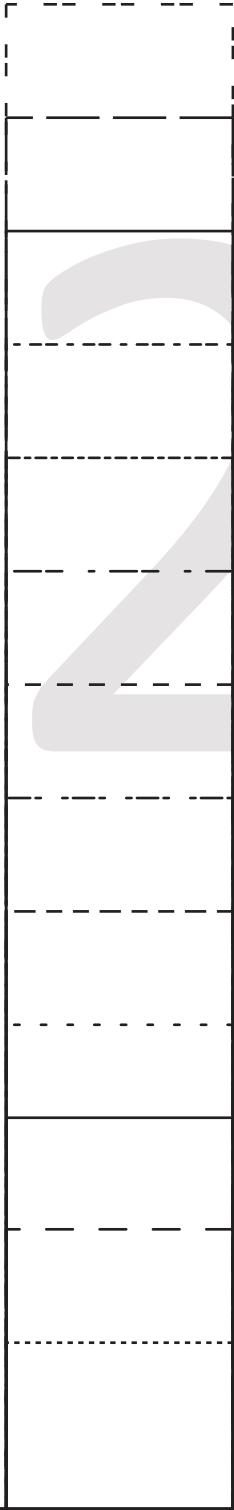


27

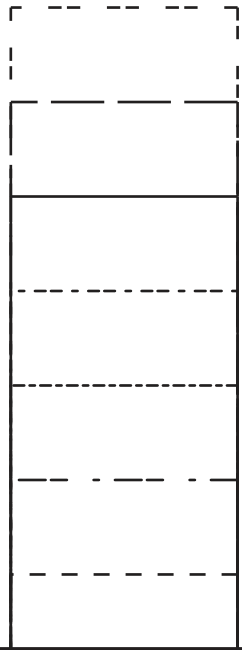


28





29



30



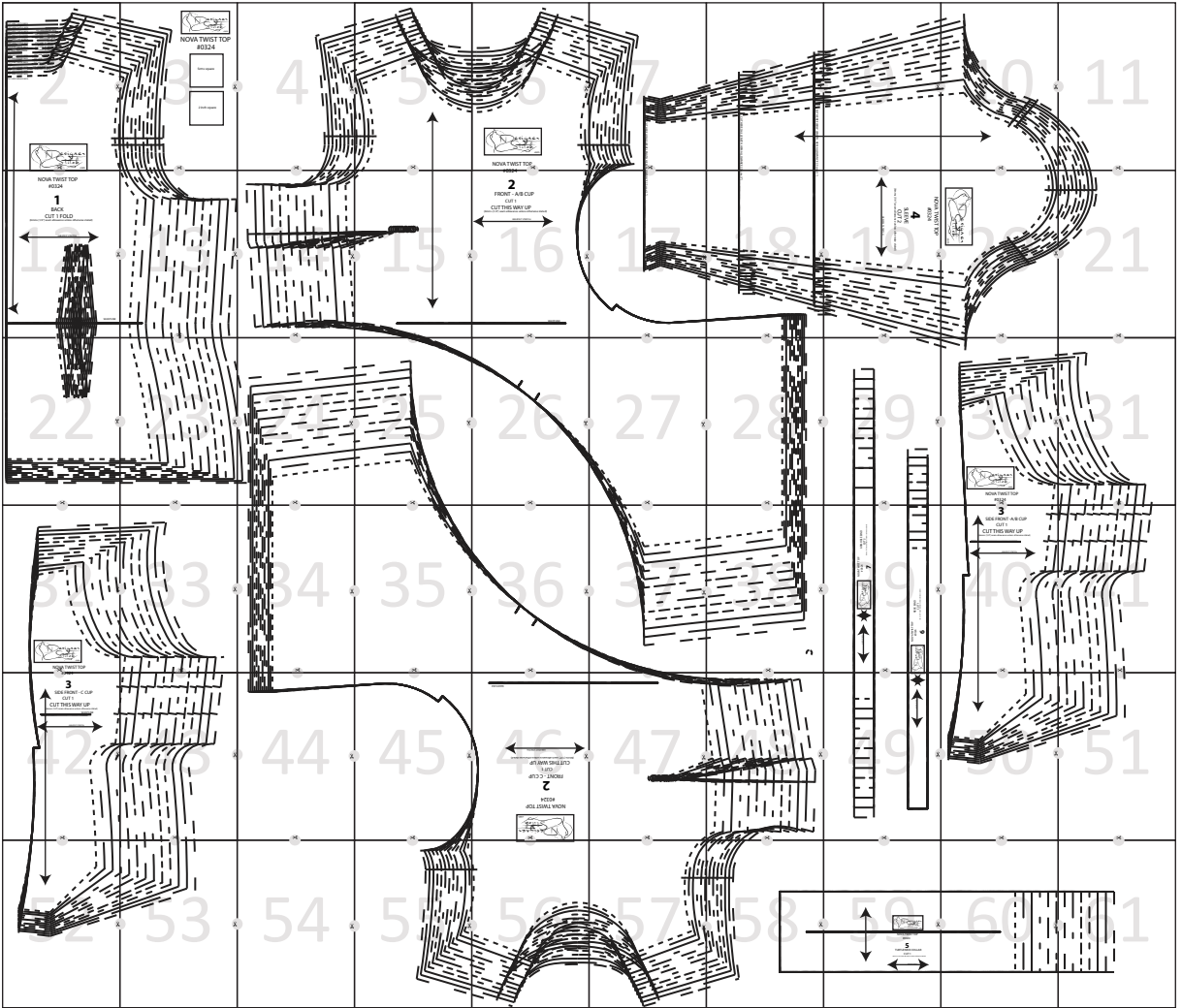
NOVA TWIST TOP

#0324

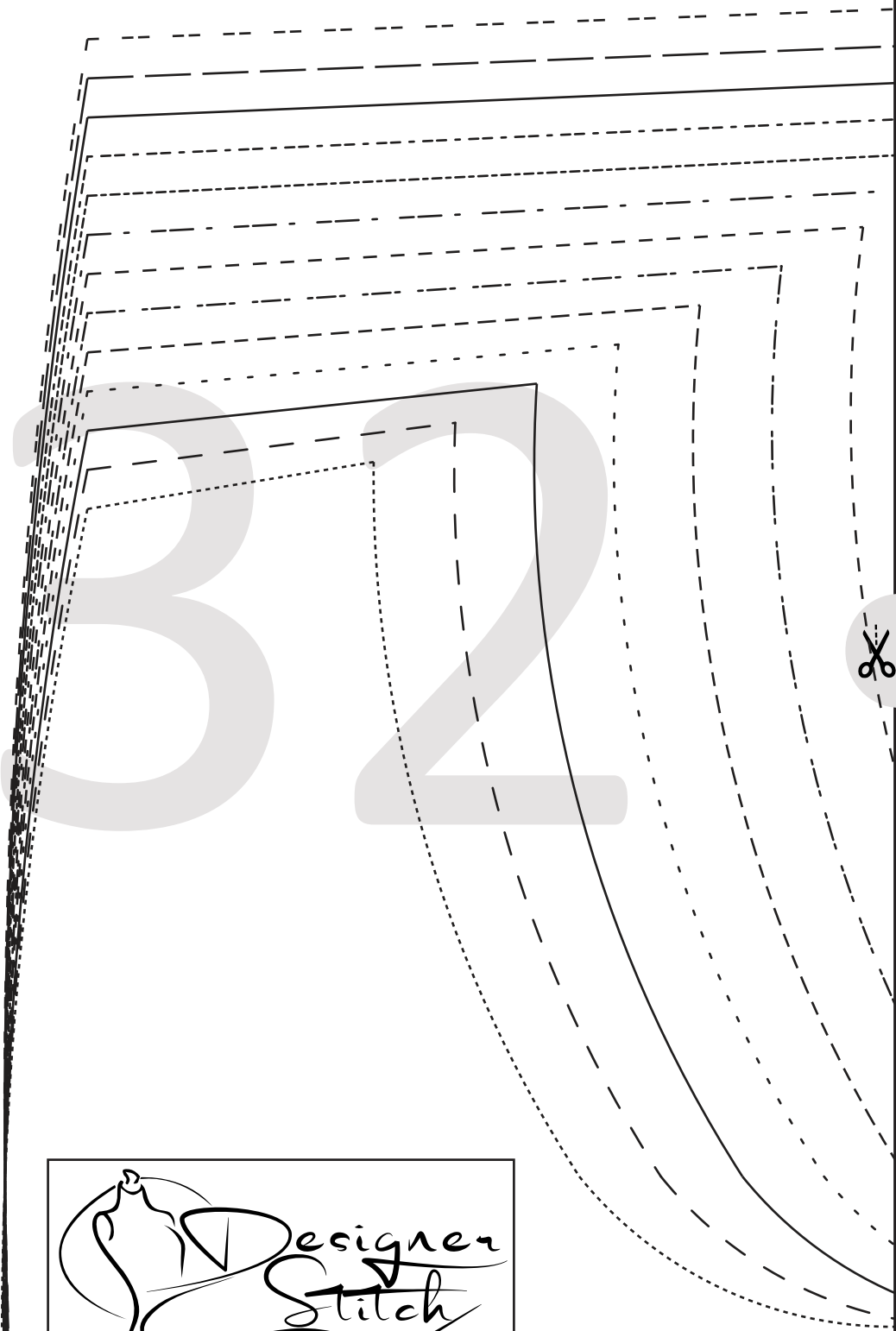


3 1



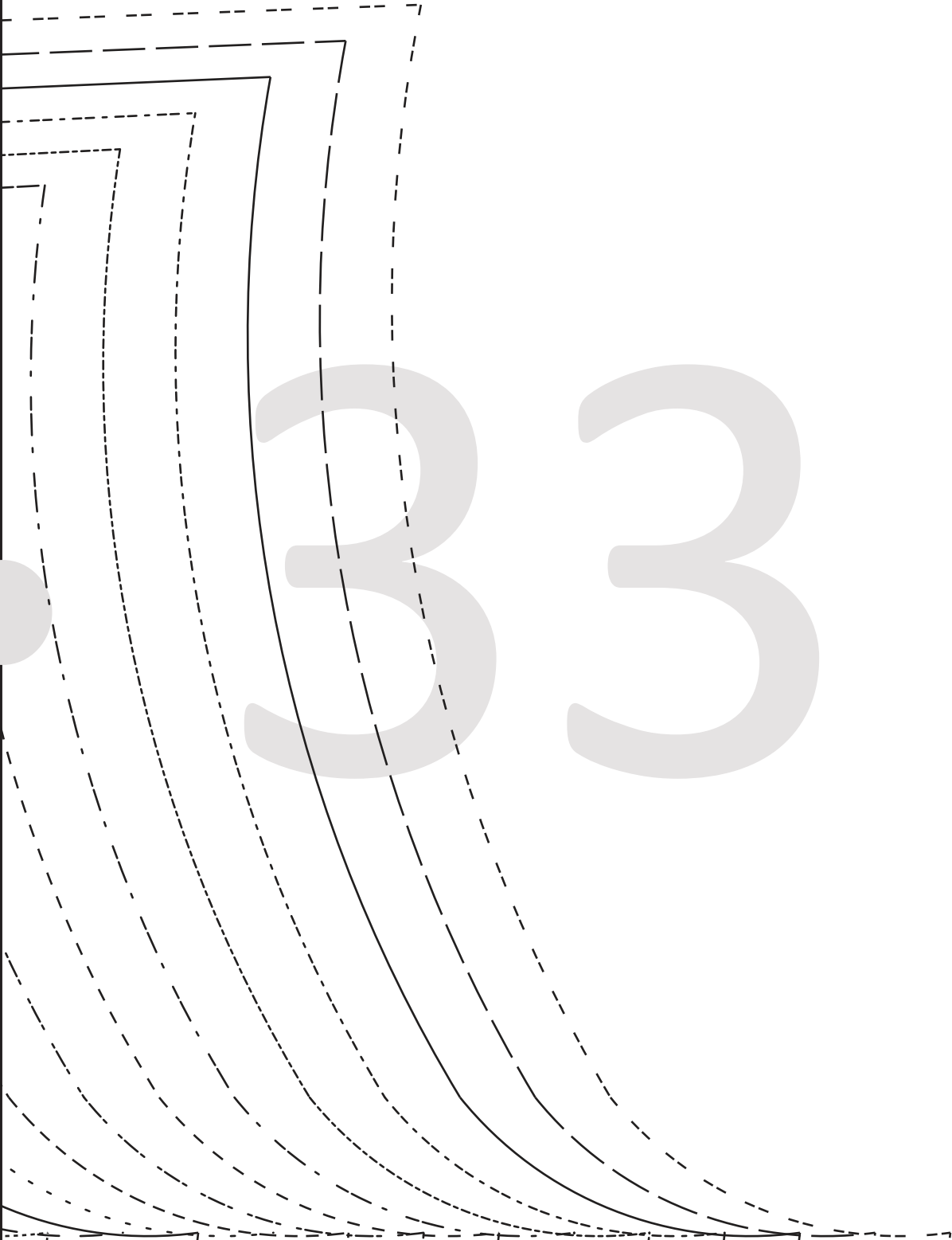


PRINT TILING TEMPLATE GUIDE FOR SIZE SPECIFIC CHOICE
 TRIM PRINT AT HOME PATTERN



NOVA TWIST TOP

#0224



3 3



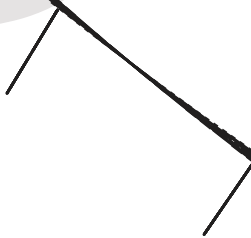
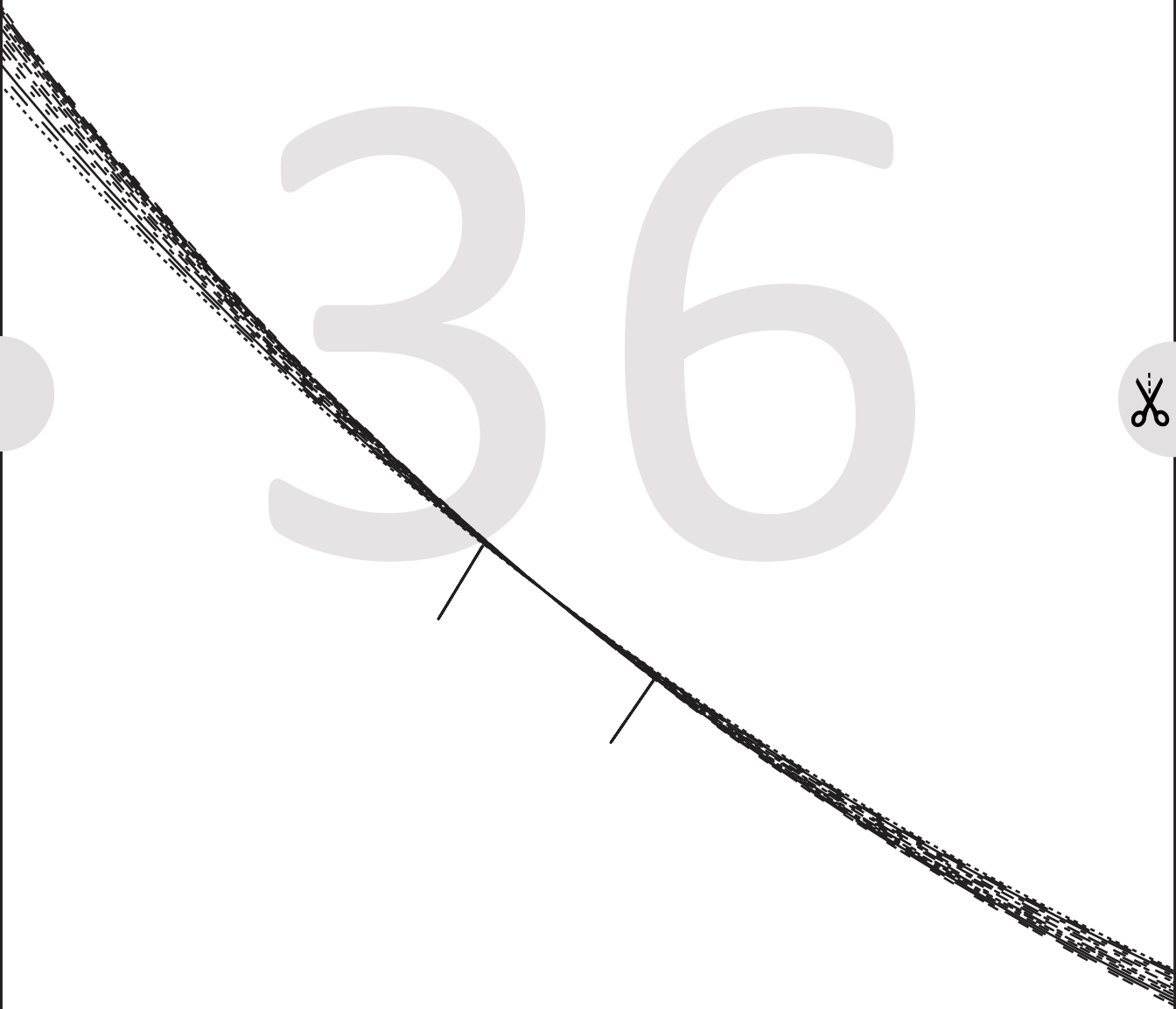
3 4



35

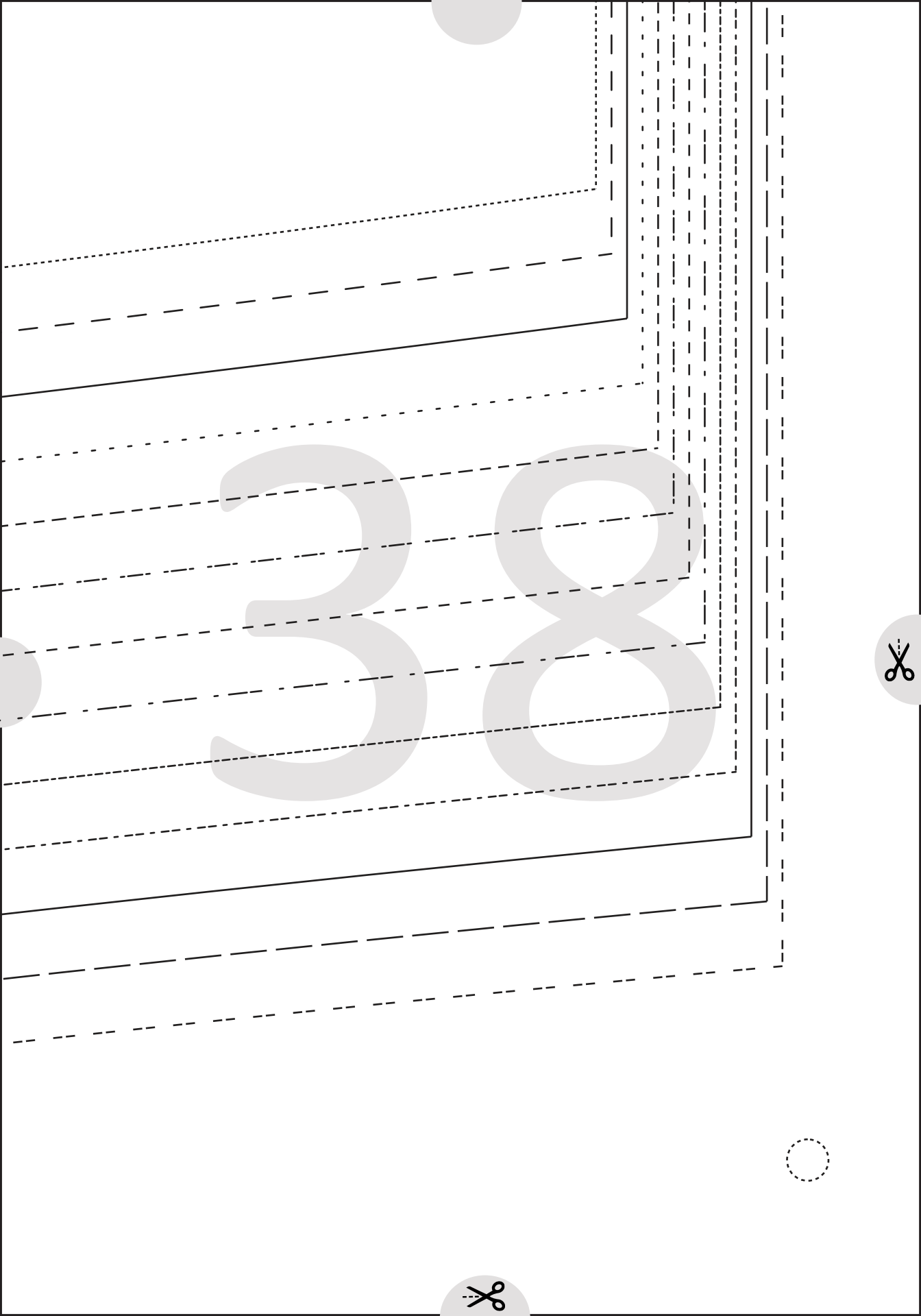


36



3 7





38



GREATEST STRETCH



NOVA TWIST TOP

#0324

7



ARMHOLE BIND

CUT 2

(6mm (1/4") seam allowance unless otherwise stated)

NOVA TWIST TOP

#0324

6



NECK BIND

CUT 1

(6mm (1/4") seam allowance unless otherwise stated)

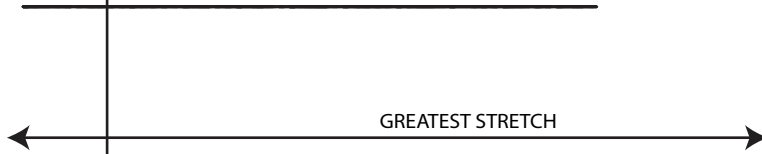


3

SIDE FRONT -A/B CUP
CUT 1

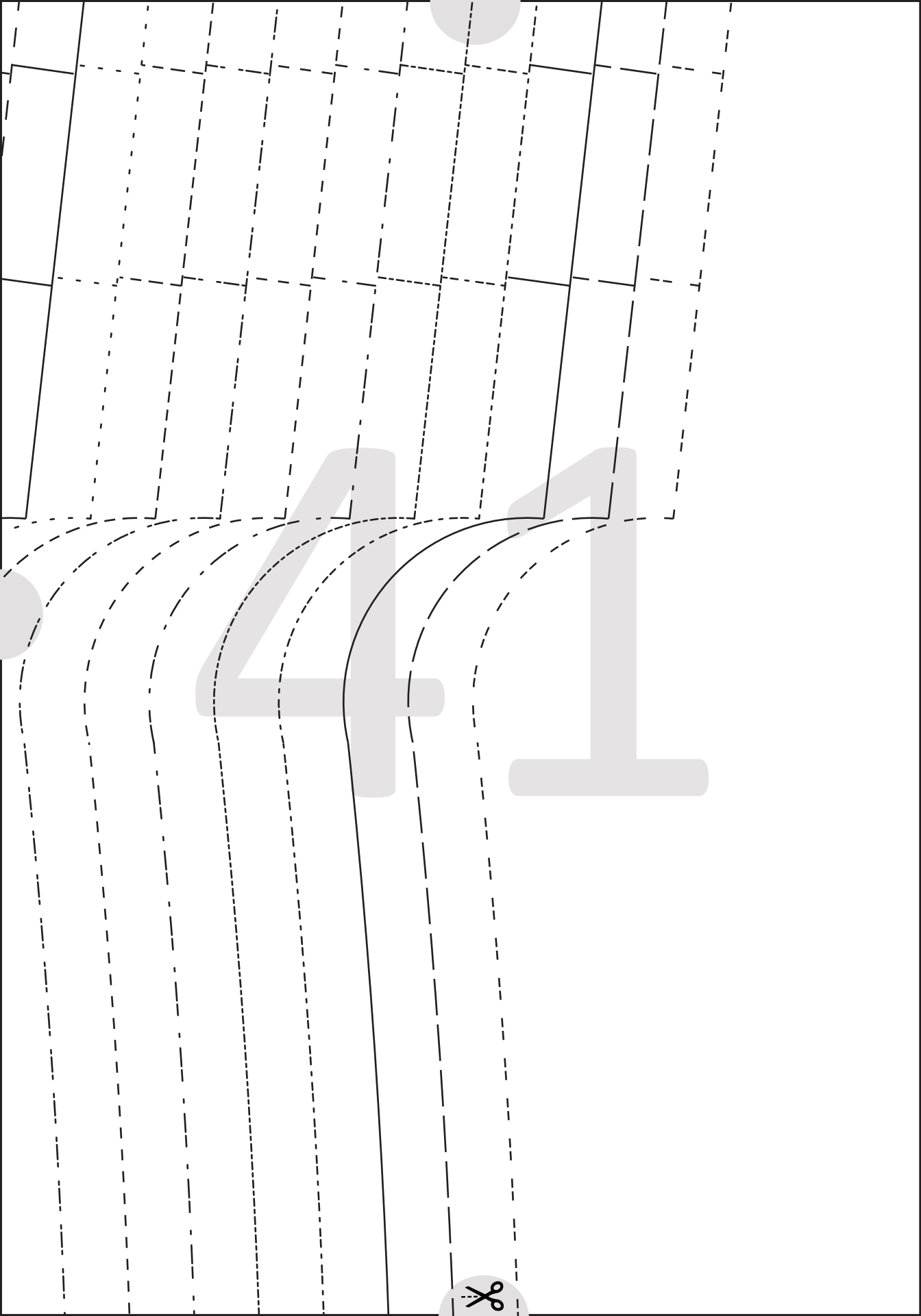
CUT THIS WAY UP

(6mms (1/4") seam allowance unless otherwise stated)



40





3

SIDE FRONT - C CUP

CUT 1

CUT THIS WAY UP

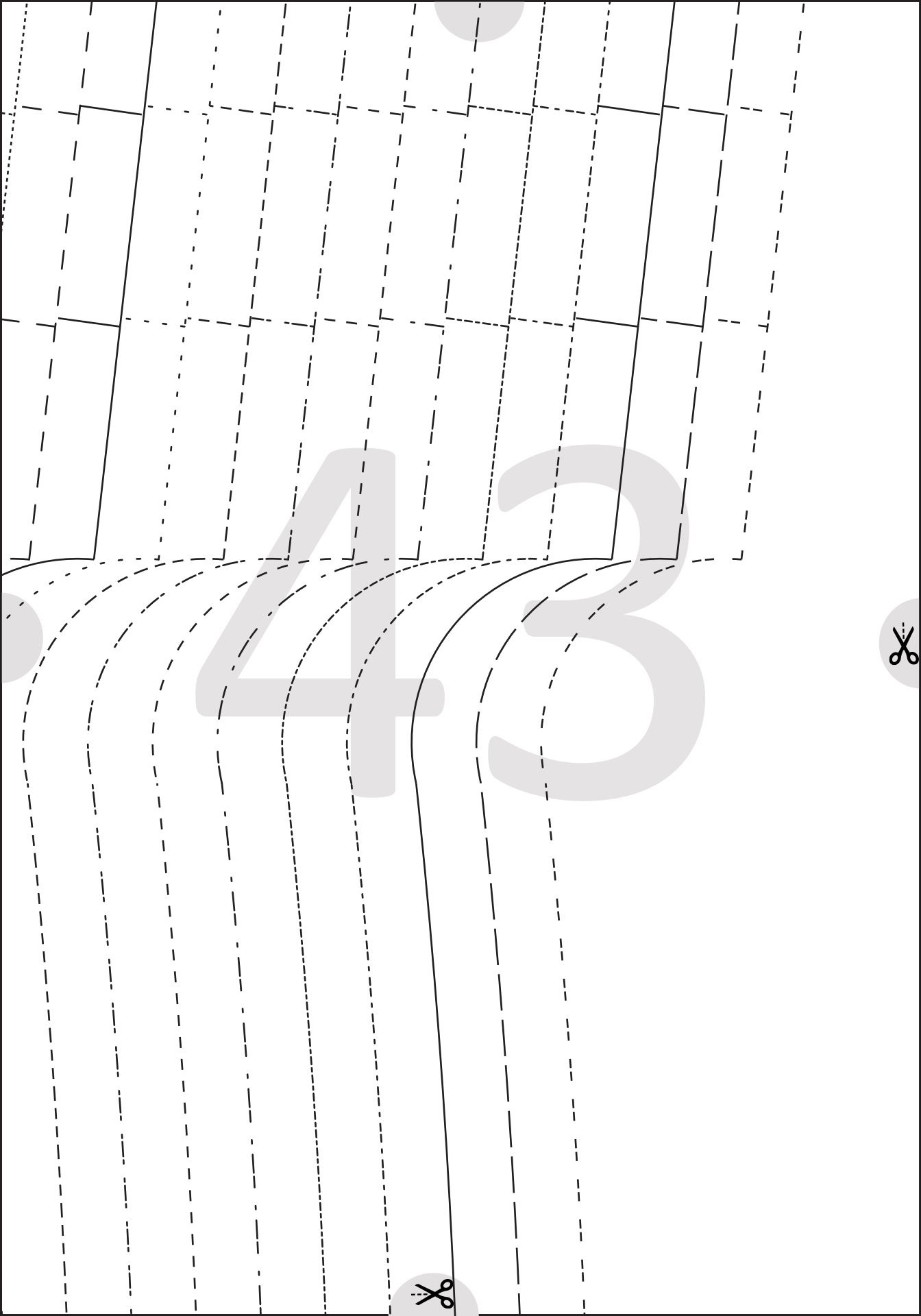
(6mms (1/4") seam allowance unless otherwise stated)

WAISTLINE

GREATEST STRETCH

42



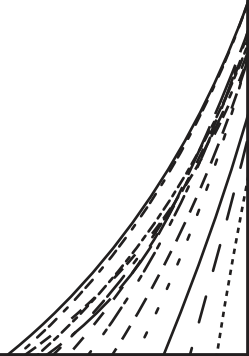




44



45



WAISTLINE

46

GREATEST STRETCH

(6mm (1/4") seam allowance unless otherwise stated)

CUT THIS WAY UP

CUT 1

FRONT - C CUP

2

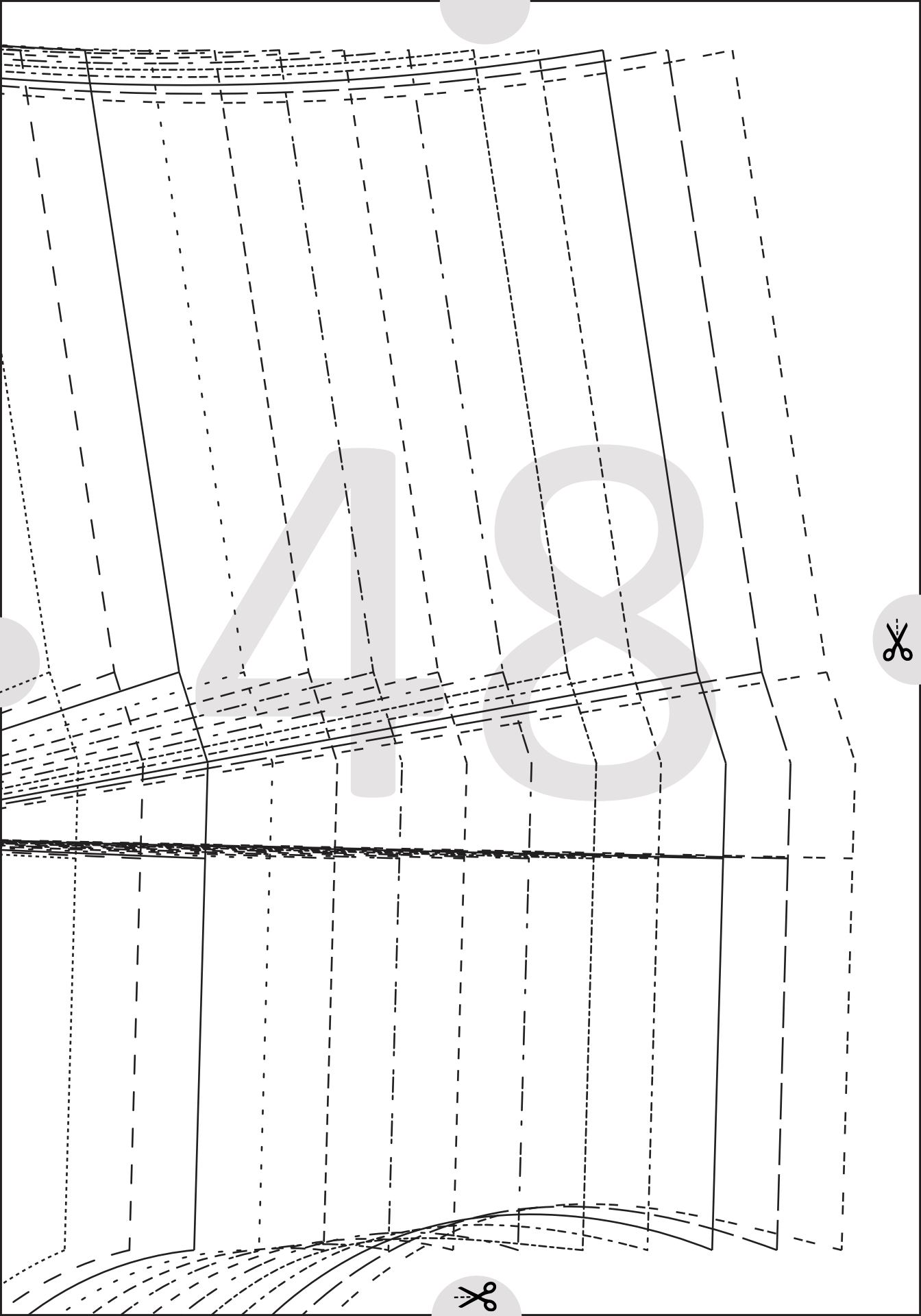
#0324

NOVA TWIST TOP



47





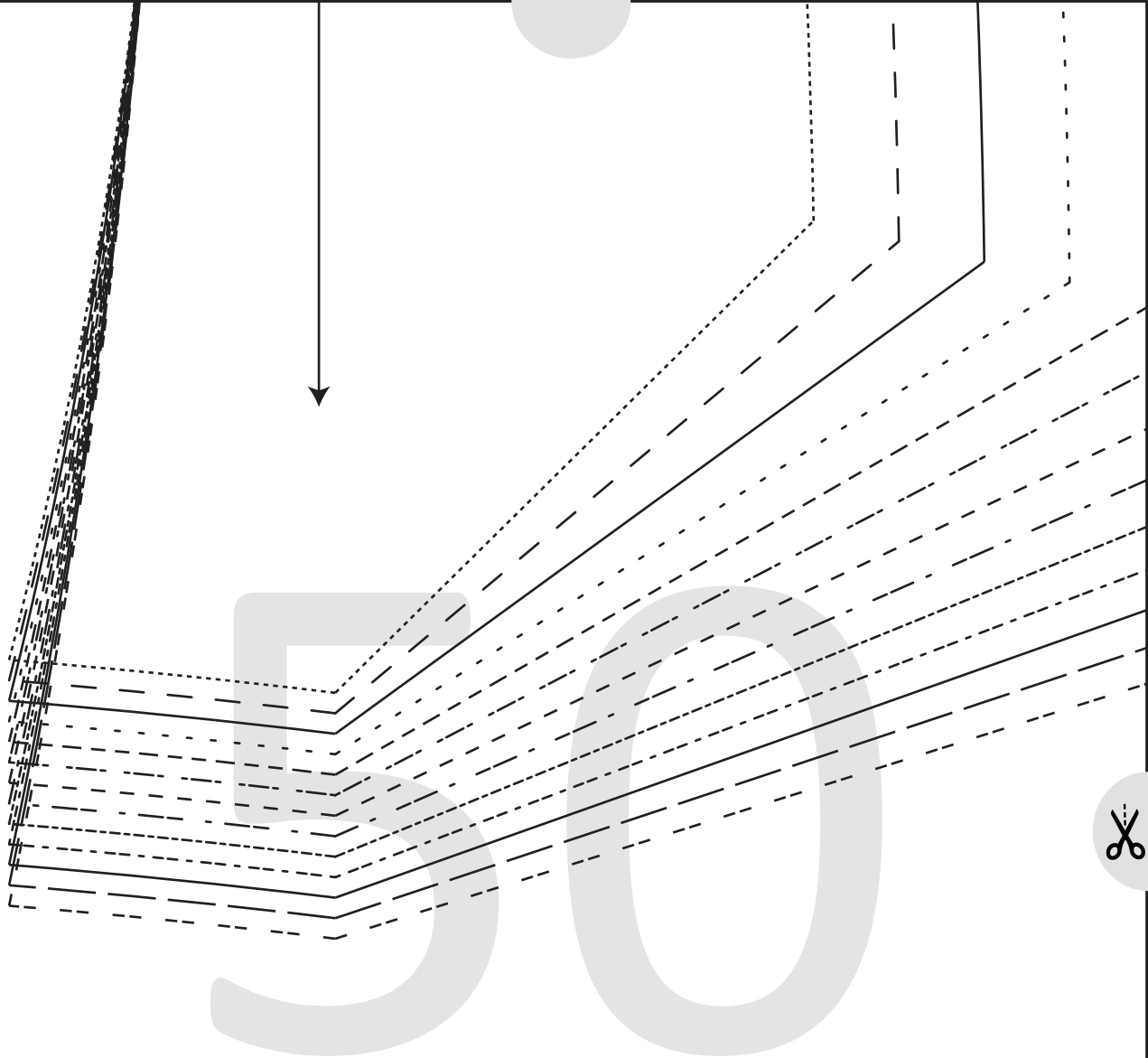
48

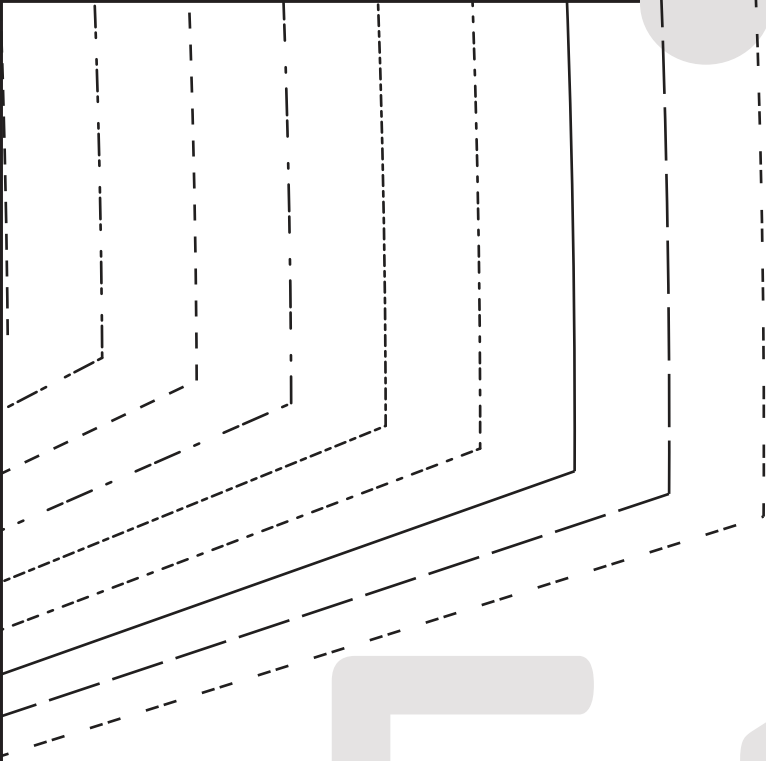


49

GREATEST STRETCH

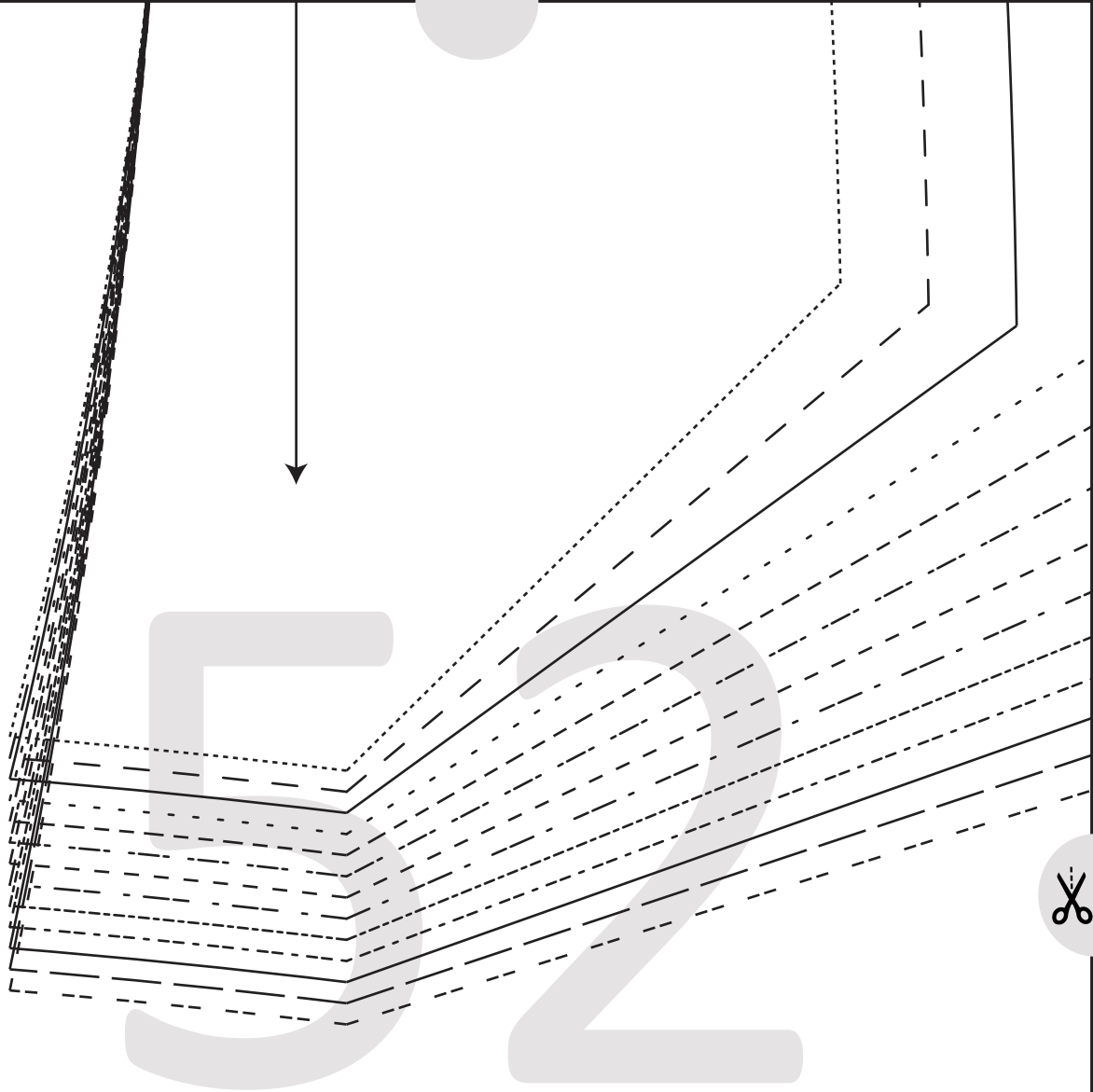


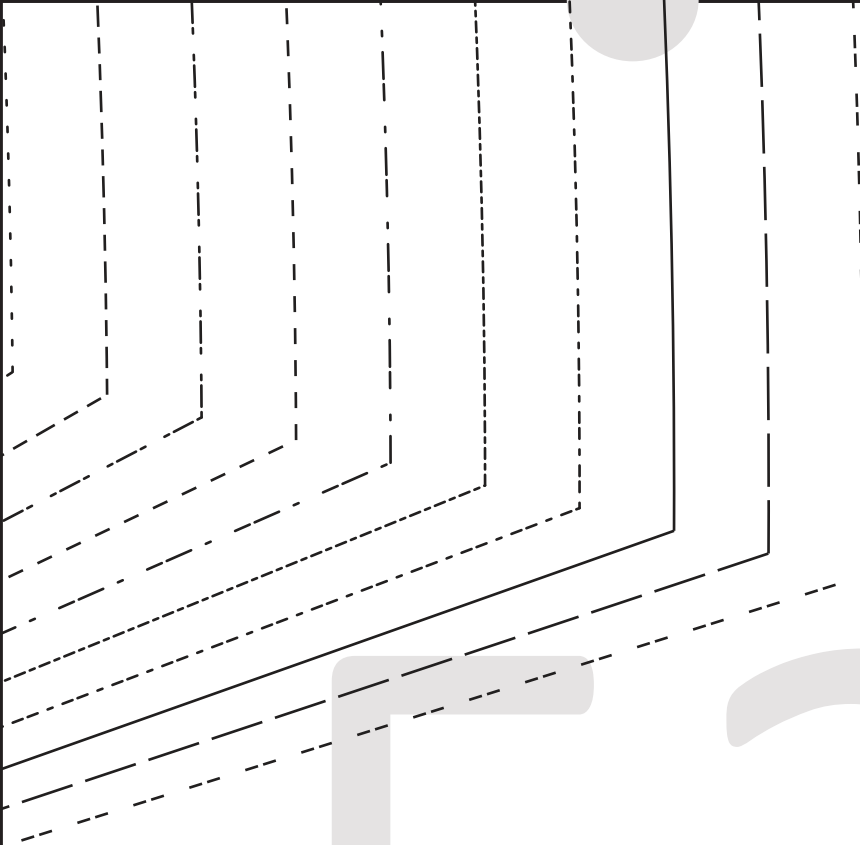




5 1







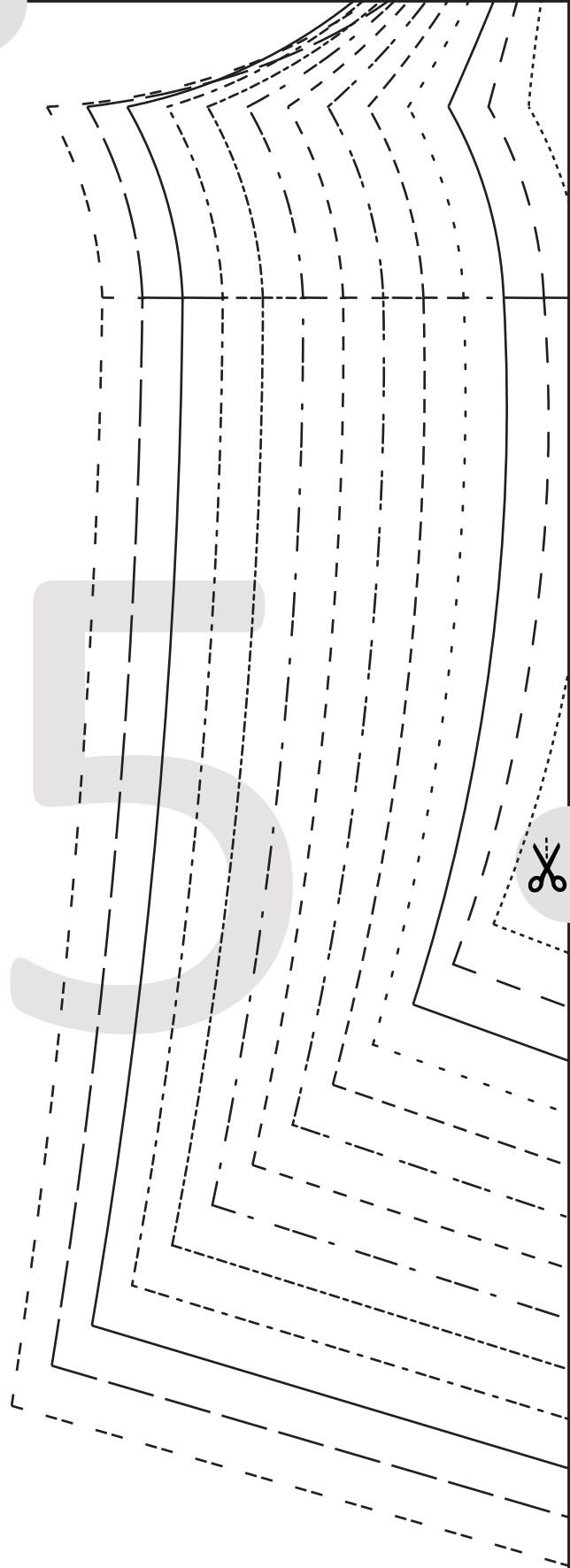
53



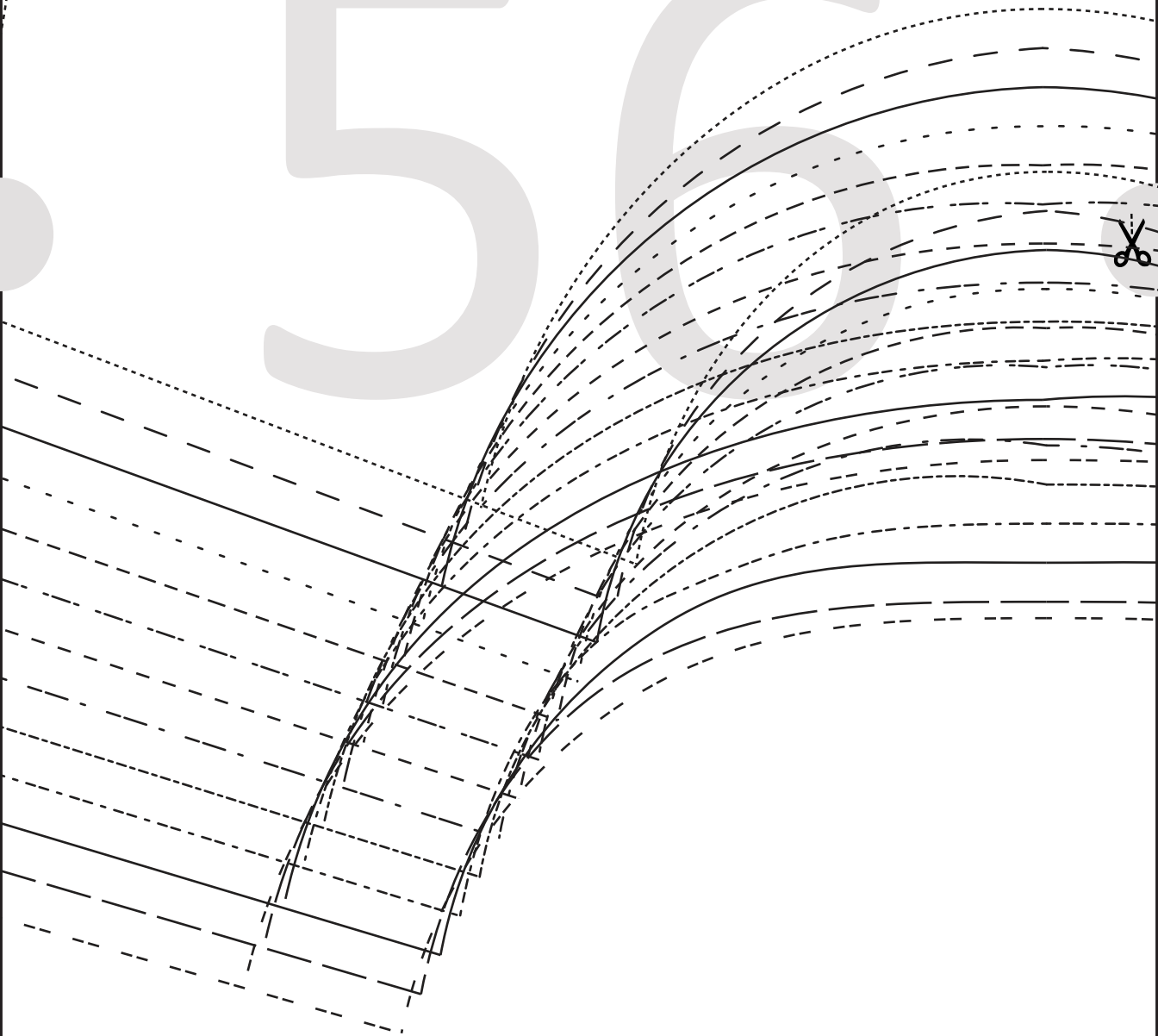
54



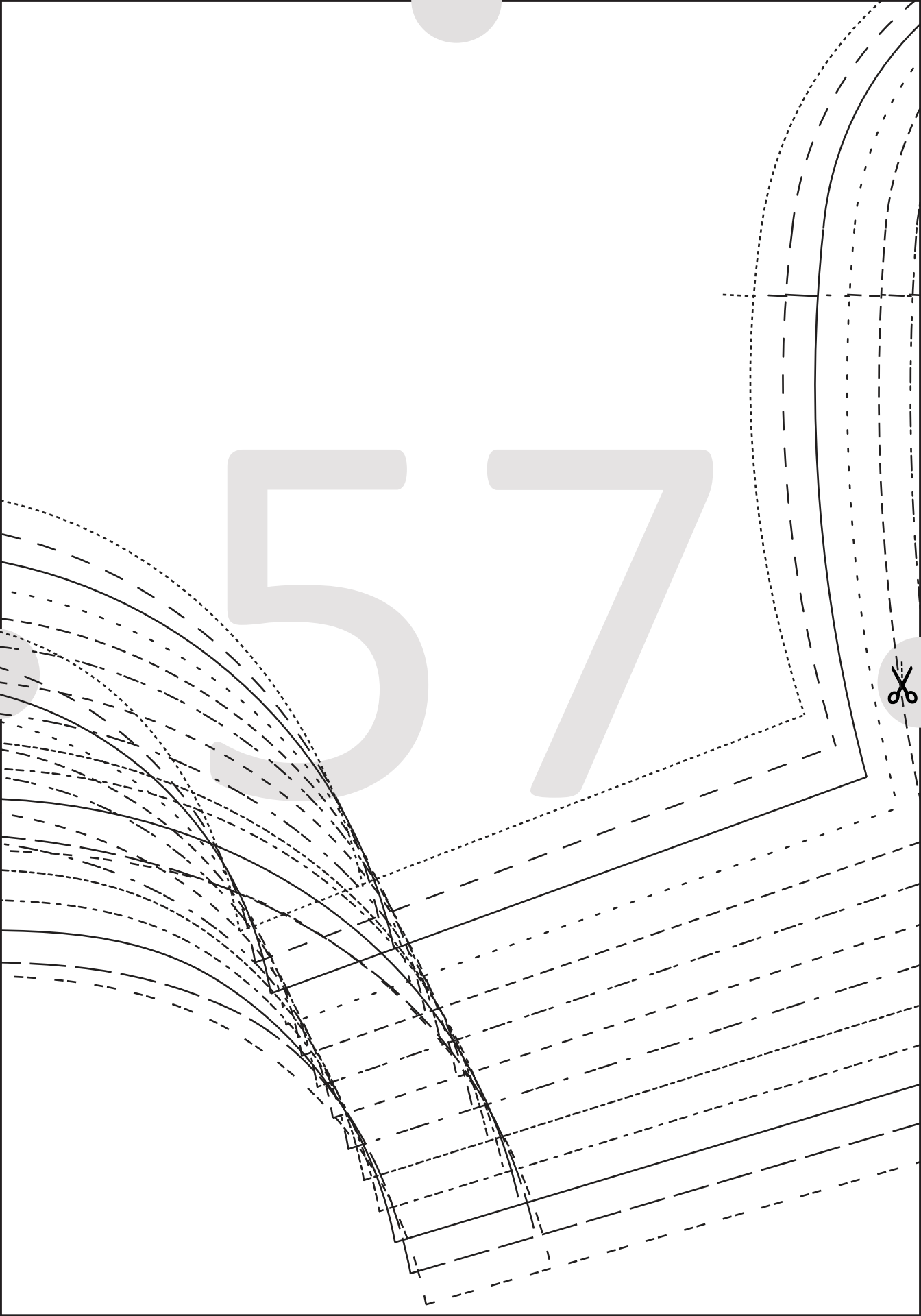
55



56



57



58





NOVA TWIST TOP
#0324

5
TURTLENECK COLLAR
CUT 1

(6mms (1/4") seam allowance unless otherwise stated)

GREATEST STRETCH

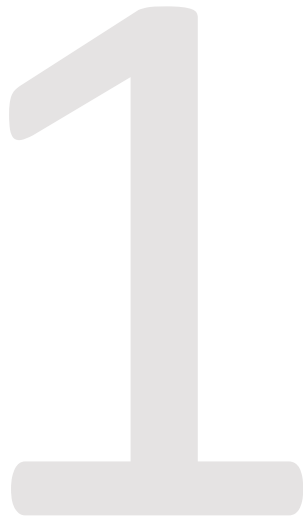
60





6

A large, light grey number '6' is centered within a writing grid. The grid consists of a solid top line, a solid bottom line, and a solid vertical midline. There are also dashed vertical lines on either side of the midline, and dashed horizontal lines at the top and bottom. The number '6' is positioned between the solid top and bottom lines and is centered horizontally between the dashed vertical lines.



1

A large, light grey number '1' is positioned to the right of the writing grid. It is a simple, bold, sans-serif digit.