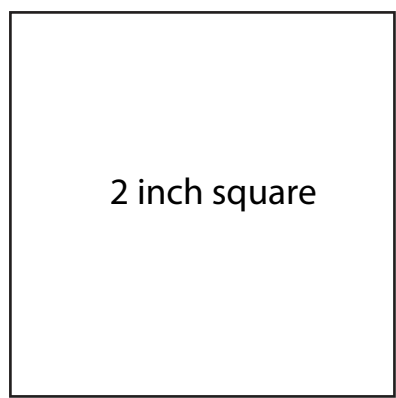
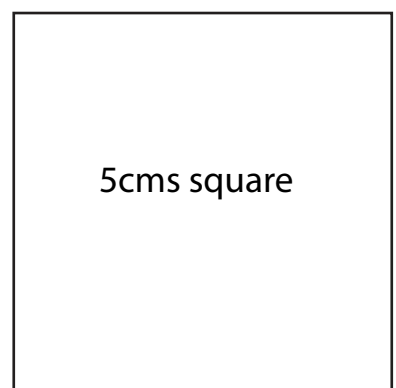




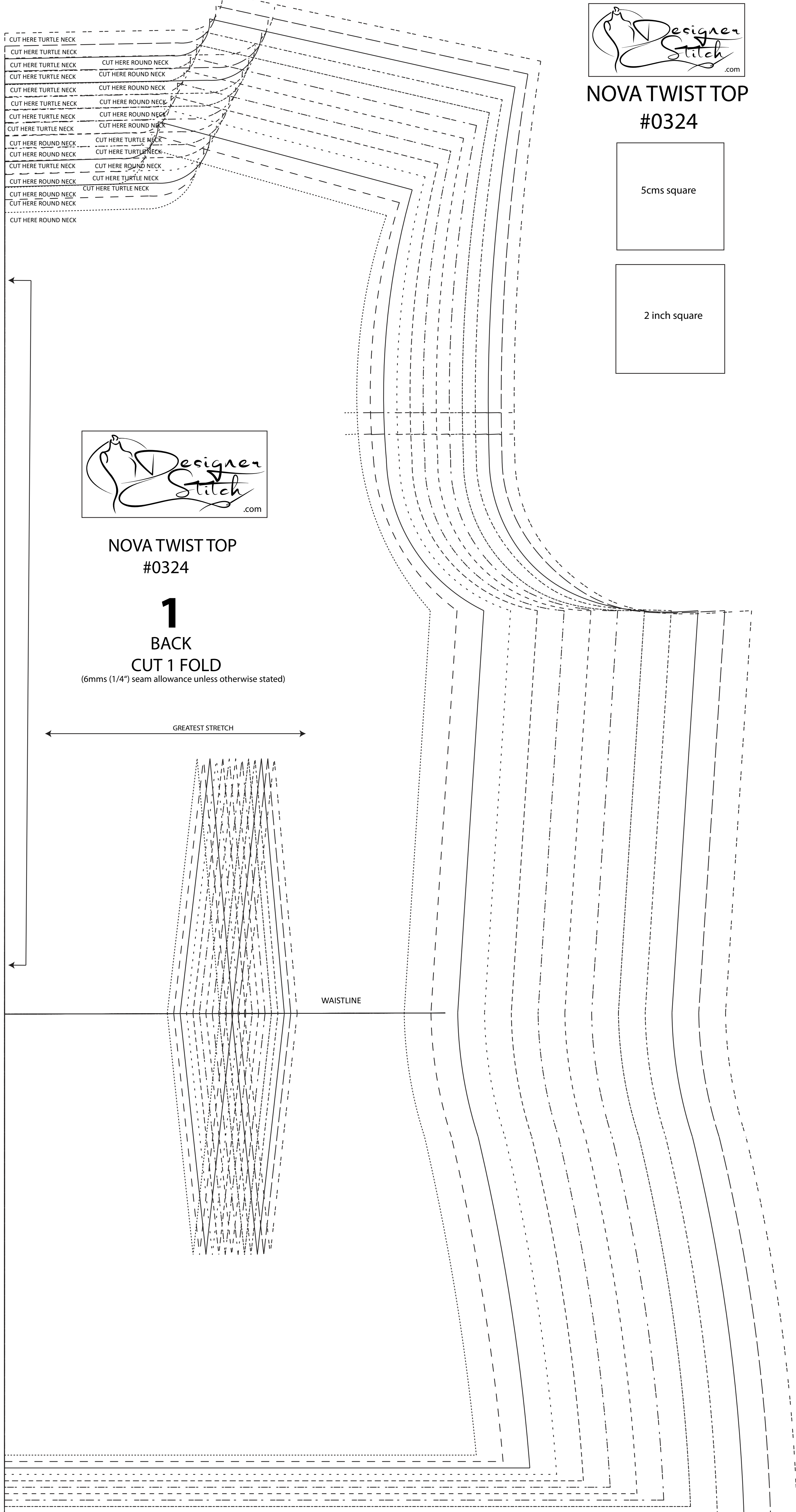
NOVA TWIST TOP
#0324



SIZE KEY

1
2	- - - -
3	_____
4
5	- - - -
6	_____
7
8	- - - -
9	_____
10
11	- - - -
12	_____
13

FRONT - A and B Cup



NOVA TWIST TOP
#0324

1

BACK
CUT 1 FOLD

(6mms (1/4") seam allowance unless otherwise stated)

GREATEST STRETCH

WAISTLINE



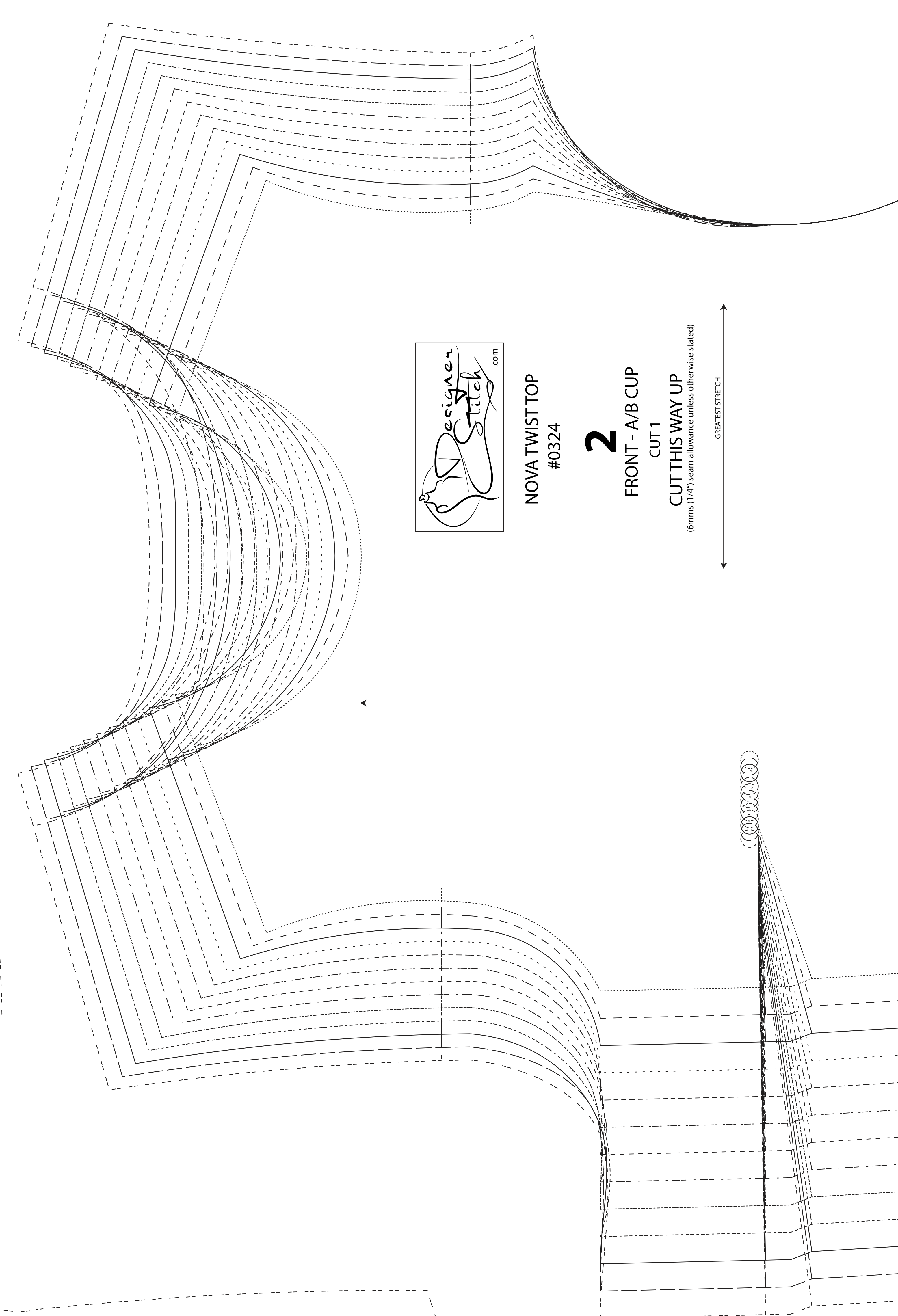
NOVA TWIST TOP
#0324

2

FRONT - A/B CUP
CUT 1

CUT THIS WAY UP
(6mms (1/4") seam allowance unless otherwise stated)

GREATEST STRETCH



NOVA TWIST TOP
#0324

3

SIDE FRONT - A/B CUP
CUT 1

CUT THIS WAY UP
(6mms (1/4") seam allowance unless otherwise stated)

GREATEST STRETCH

