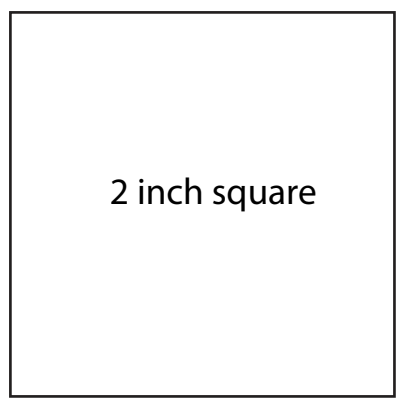
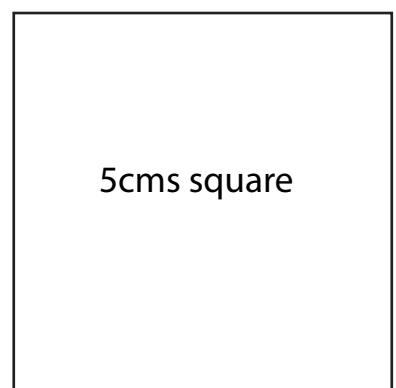




NOVA TWIST TOP
#0324



SIZE KEY

- 1 (solid line)
- 2 - - - - (dashed line)
- 3 _____ (solid line)
- 4 (dotted line)
- 5 (dotted line)
- 6 - - - - (dashed line)
- 7 (dotted line)
- 8 - - - - (dashed line)
- 9 (dotted line)
- 10 (dotted line)
- 11 _____ (solid line)
- 12 - - - - (dashed line)
- 13 (dotted line)

FRONT C Cup



NOVA TWIST TOP
#0324

1

BACK

CUT 1 FOLD

(6mms (1/4") seam allowance unless otherwise stated)

GREATEST STRETCH

WAISTLINE



NOVA TWIST TOP
#0324

2

FRONT - C CUP

CUT 1

CUT THIS WAY UP

(6mms (1/4") seam allowance unless otherwise stated)

GREATEST STRETCH



NOVA TWIST TOP
#0324

3

SIDE FRONT - C CUP

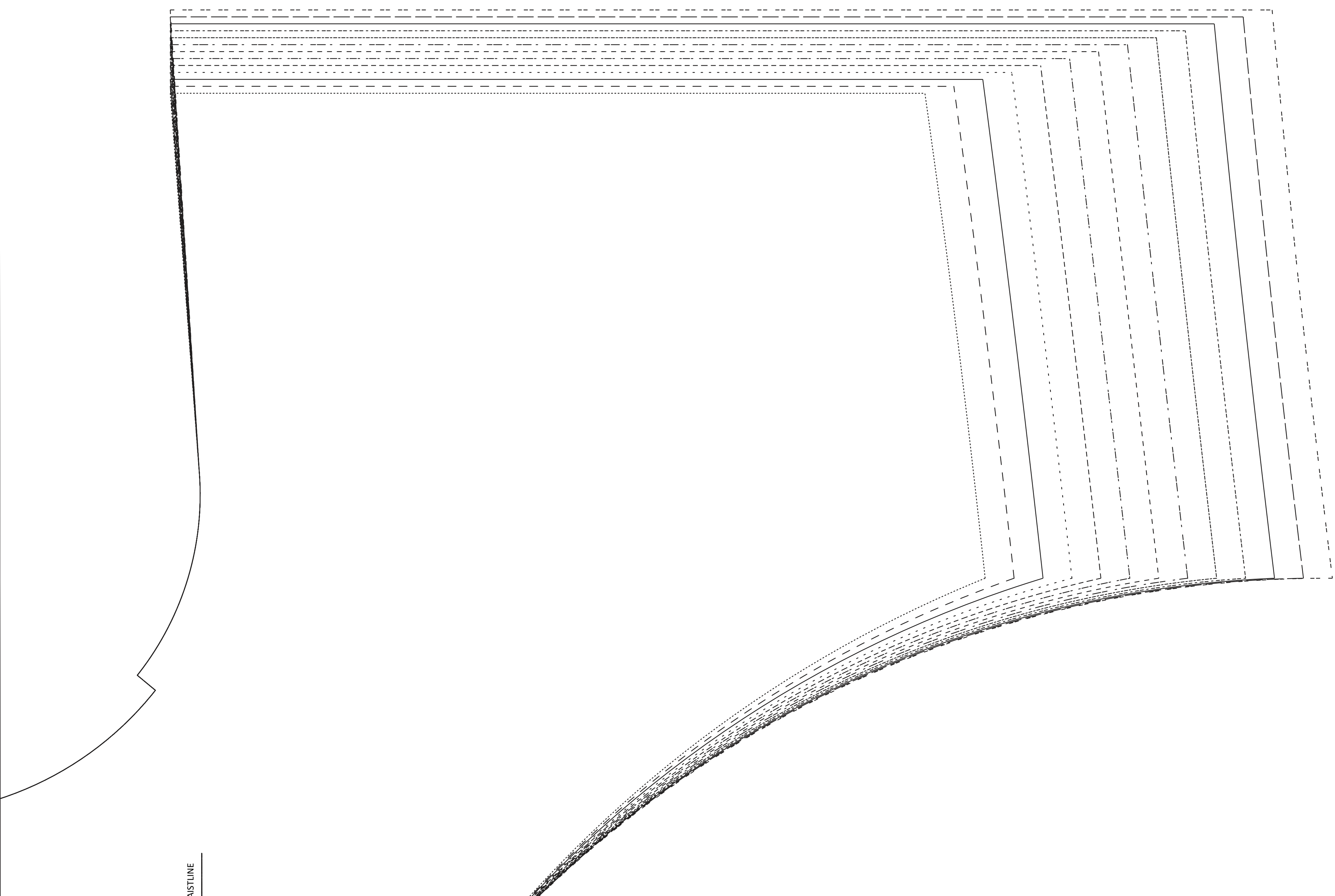
CUT 1

CUT THIS WAY UP

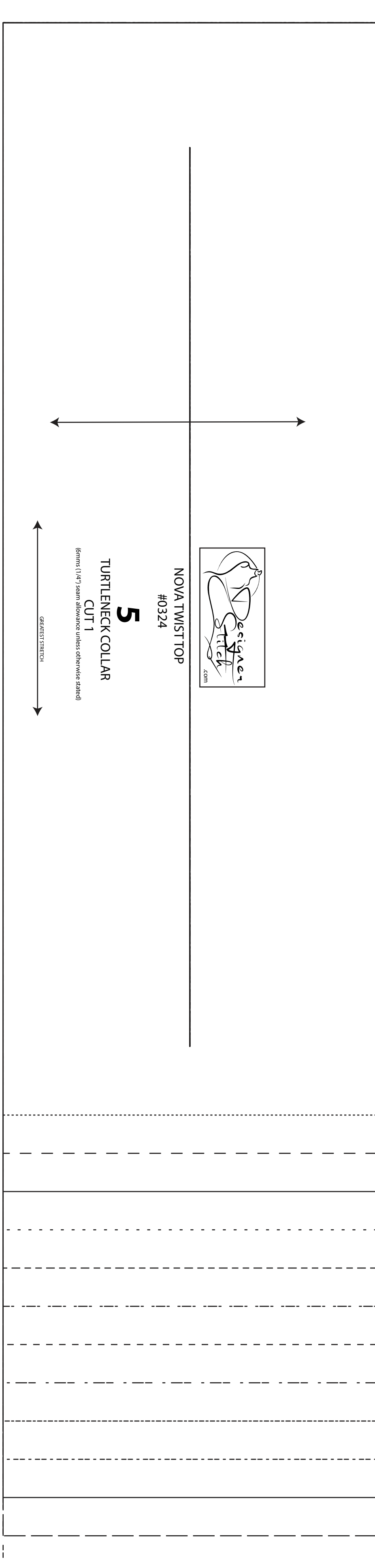
(6mms (1/4") seam allowance unless otherwise stated)

WAISTLINE

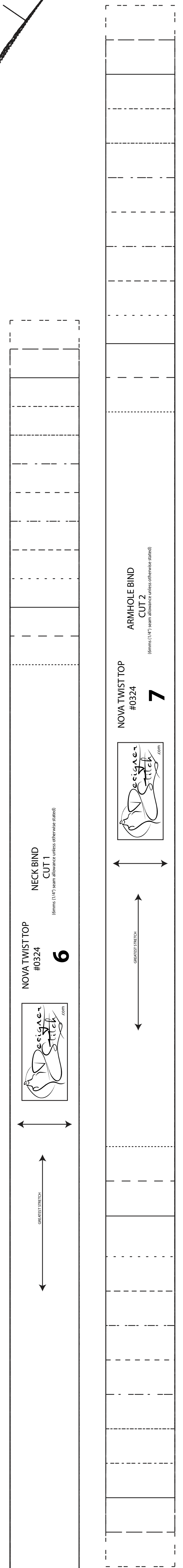
GREATEST STRETCH



WASTLINE

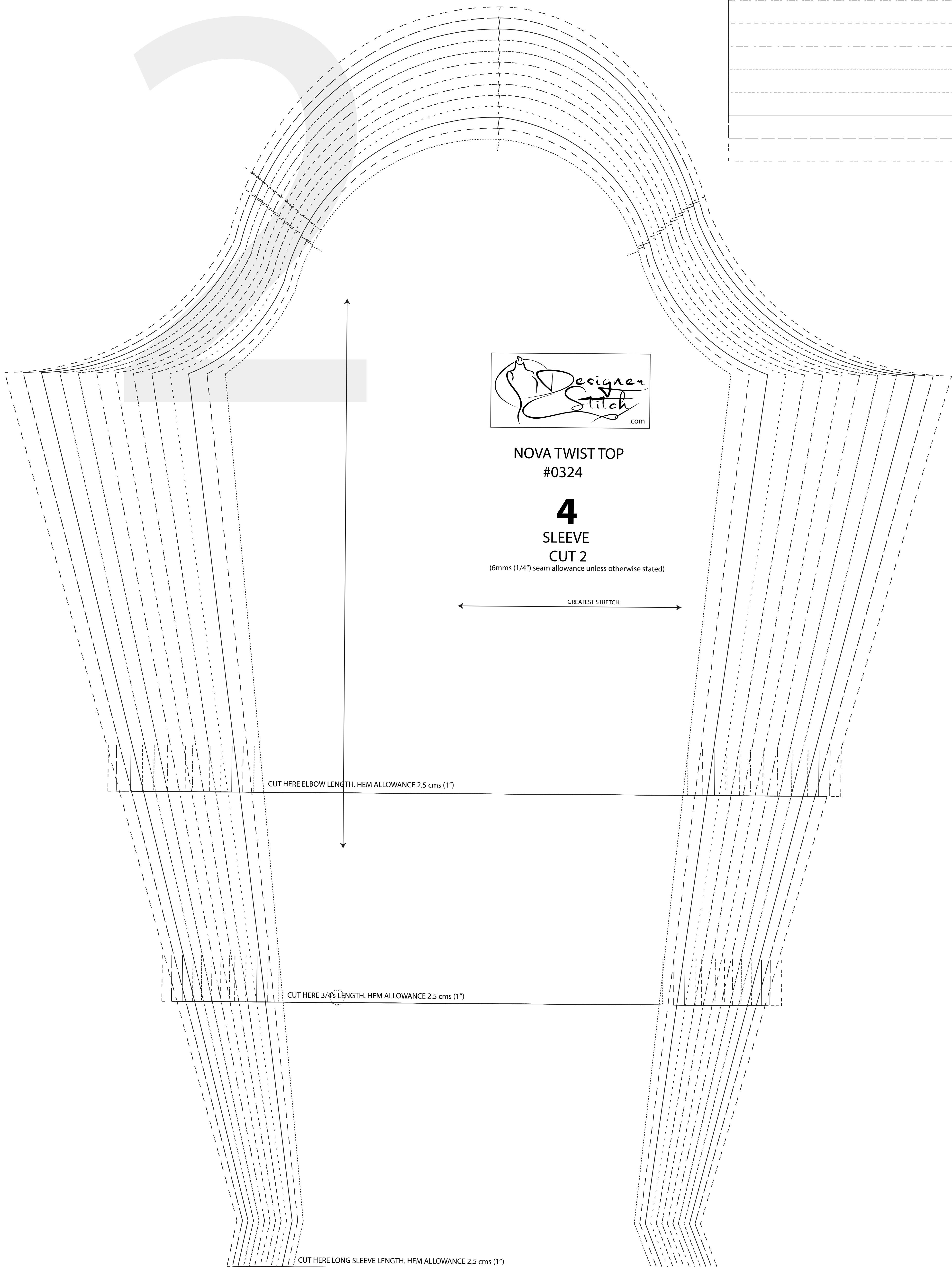


NOVA TWIST TOP #0324
5
TURTLENECK COLLAR CUT 1
DESIGNER STITCH .COM



NOVA TWIST TOP #0324
6
NECK BAND CUT 1
DESIGNER STITCH .COM

NOVA TWIST TOP #0324
7
ARMHOLE BAND CUT 2
DESIGNER STITCH .COM



NOVA TWIST TOP #0324

4

SLEEVE CUT 2

(6mms (1/4") seam allowance unless otherwise stated)

GREATEST STRETCH

CUT HERE ELBOW LENGTH, HEM ALLOWANCE 2.5 cms (1")

CUT HERE 3/4'S LENGTH, HEM ALLOWANCE 2.5 cms (1")

CUT HERE LONG SLEEVE LENGTH, HEM ALLOWANCE 2.5 cms (1")