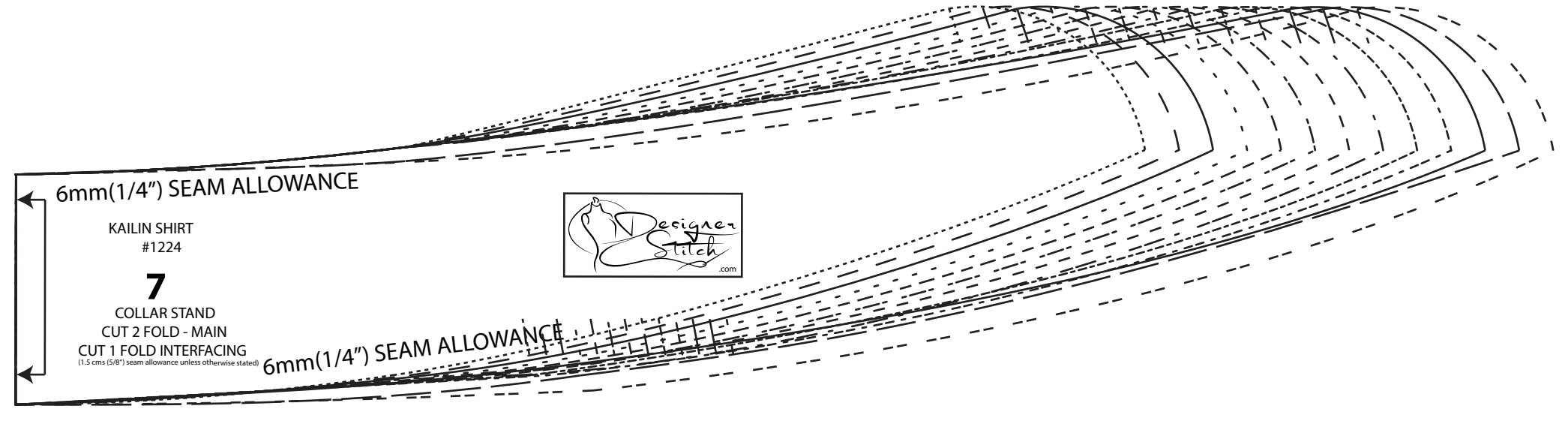
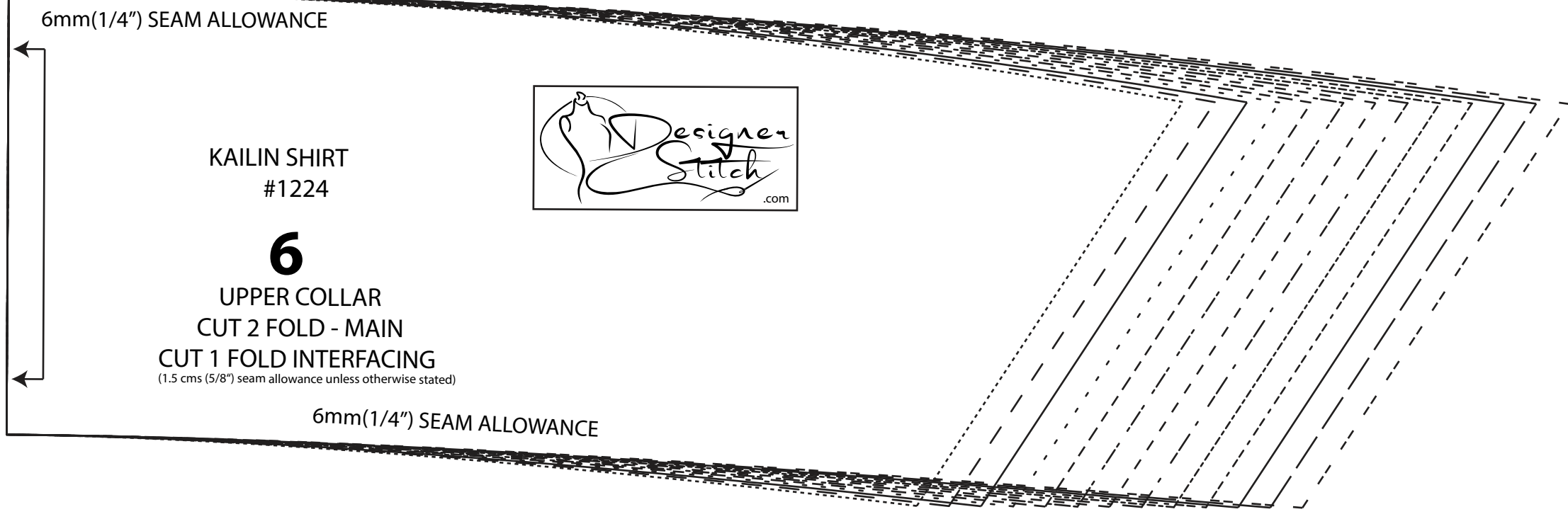
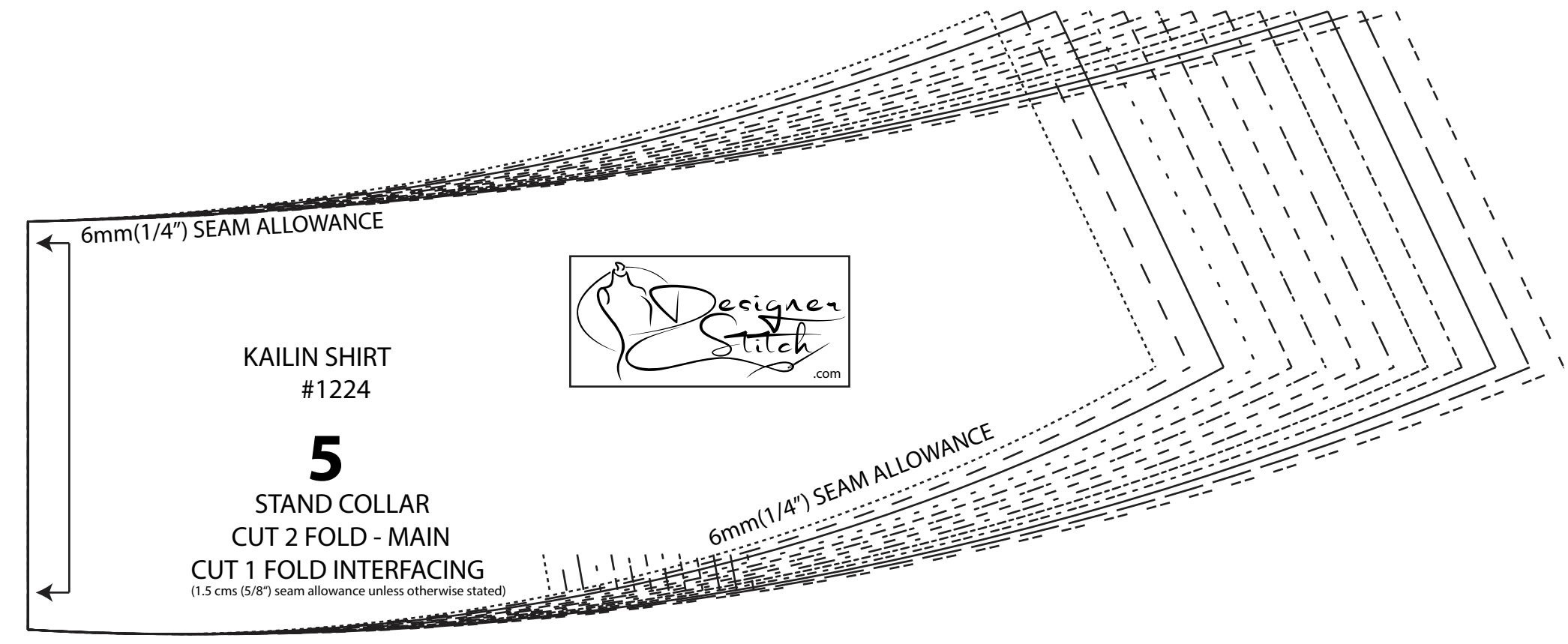
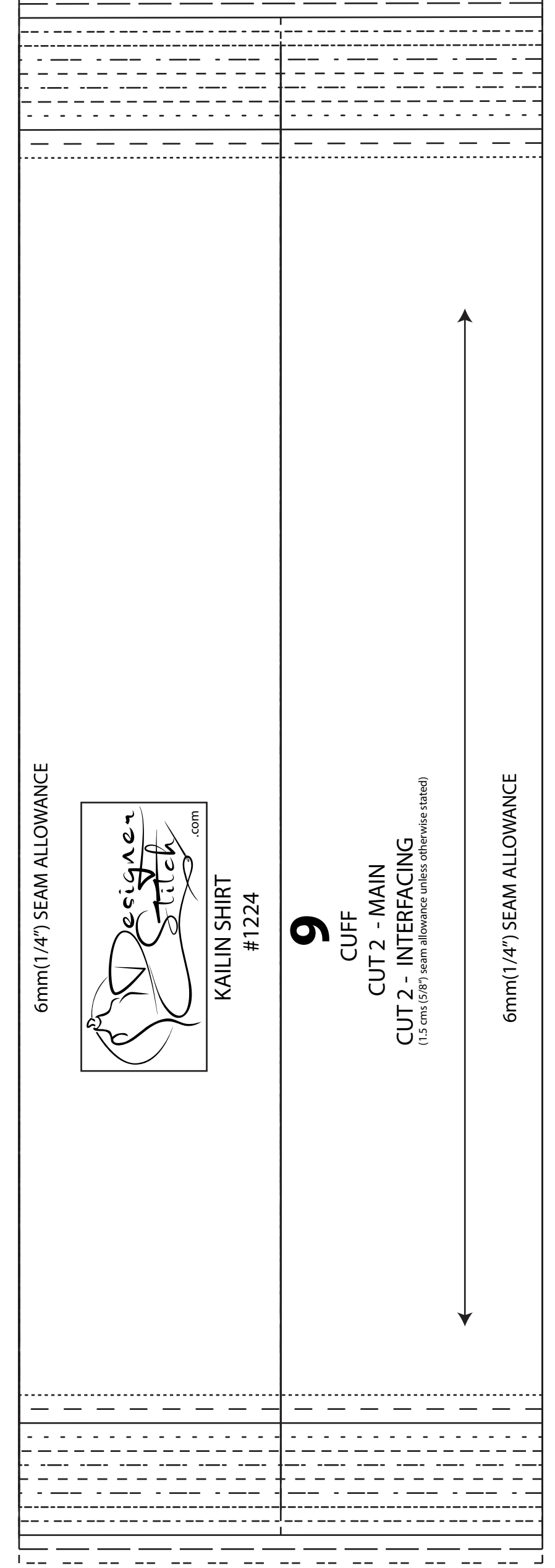
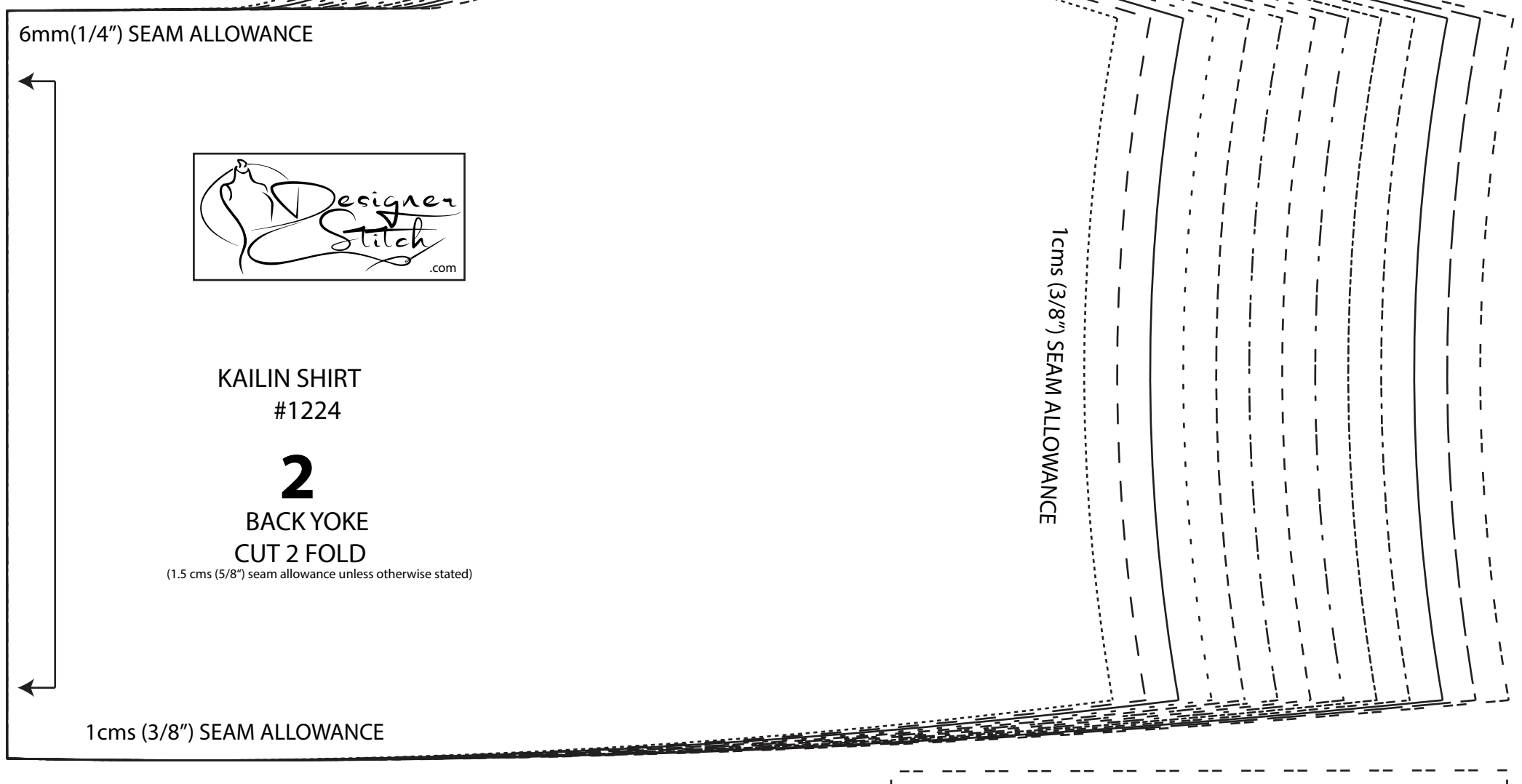
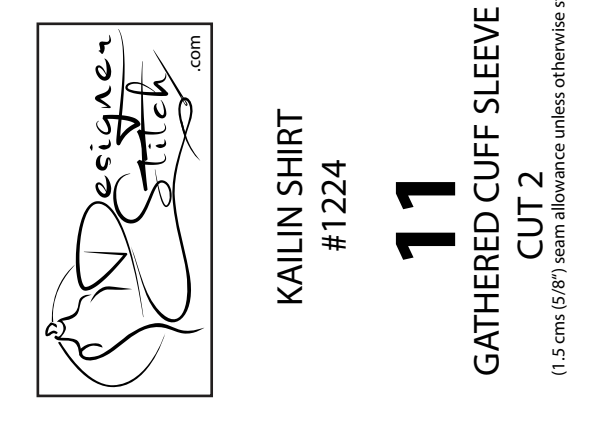
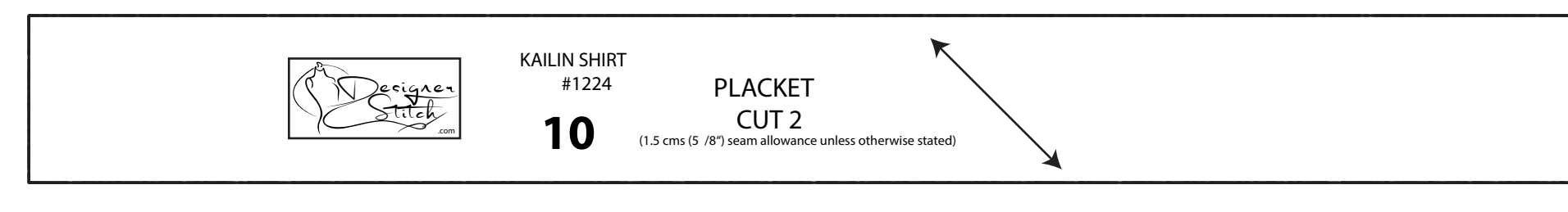


Designer
Stitch
KAILIN SHIRT
#1224
1
BACK
CUT 1 FOLD
(1.5 cms (5/8") seam allowance unless otherwise stated)



SIZE KEY

1
2	-----
3	-----
4	-----
5	-----
6	-----
7	-----
8	-----
9	-----
10	-----
11	-----
12	-----
13	-----
14	-----



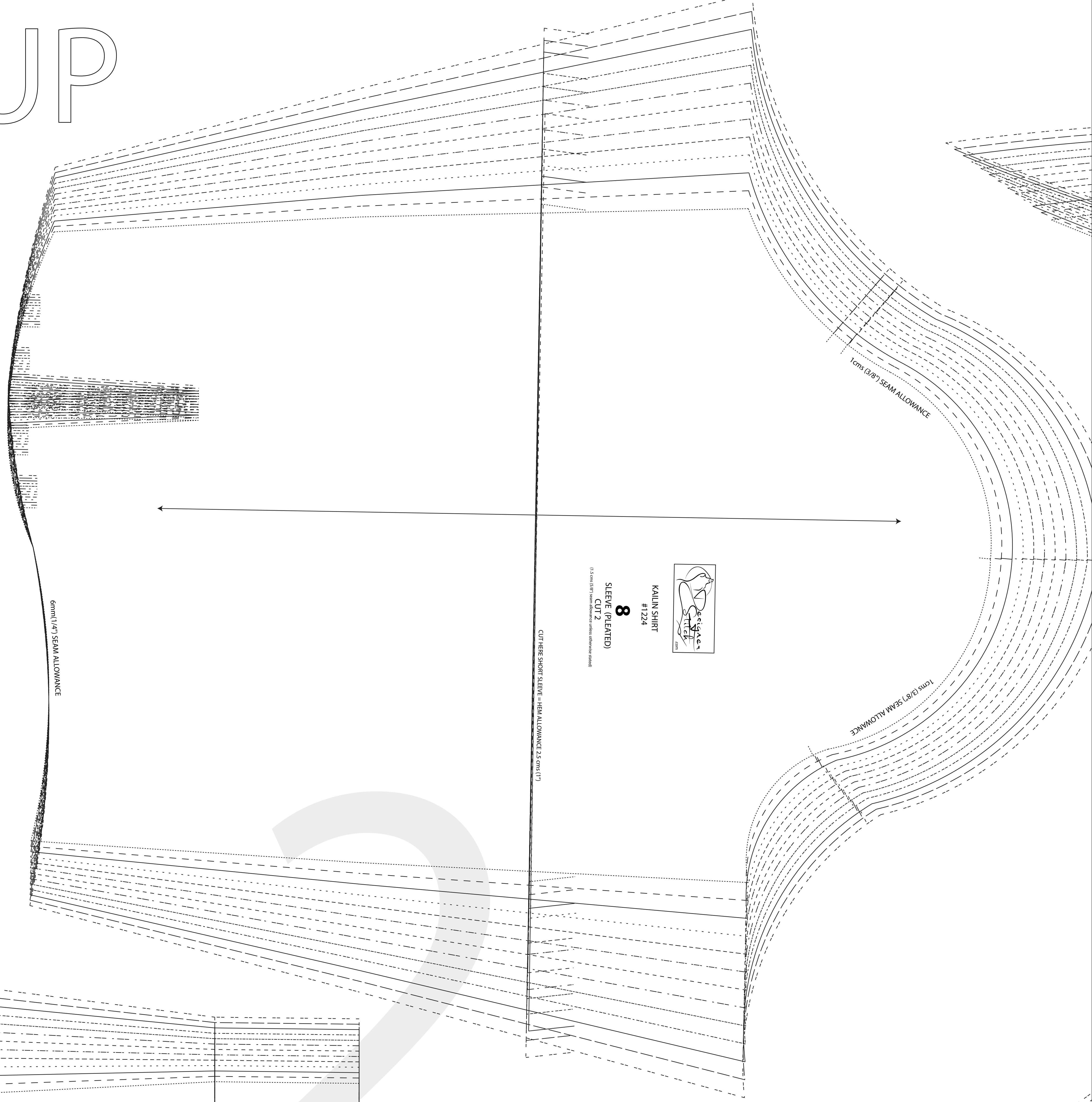
A-CUP

5cms square

2 inch square

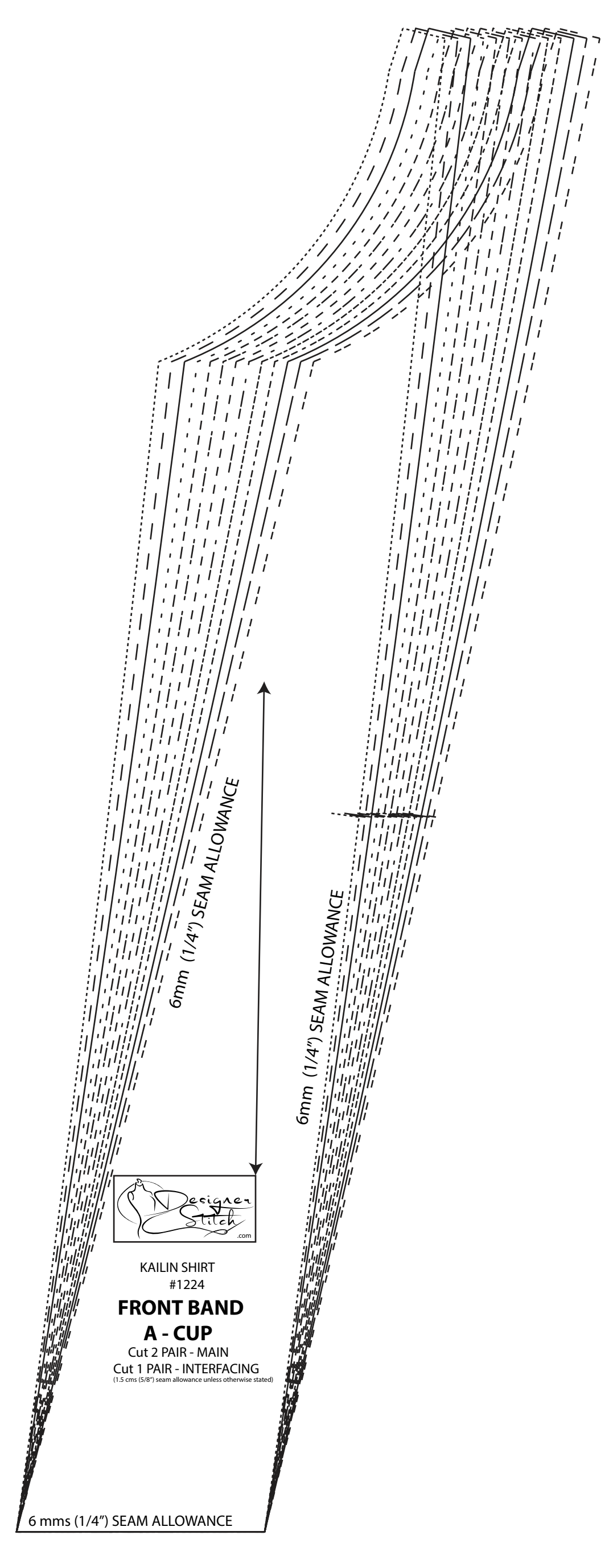


KAILIN SHIRT
#1224



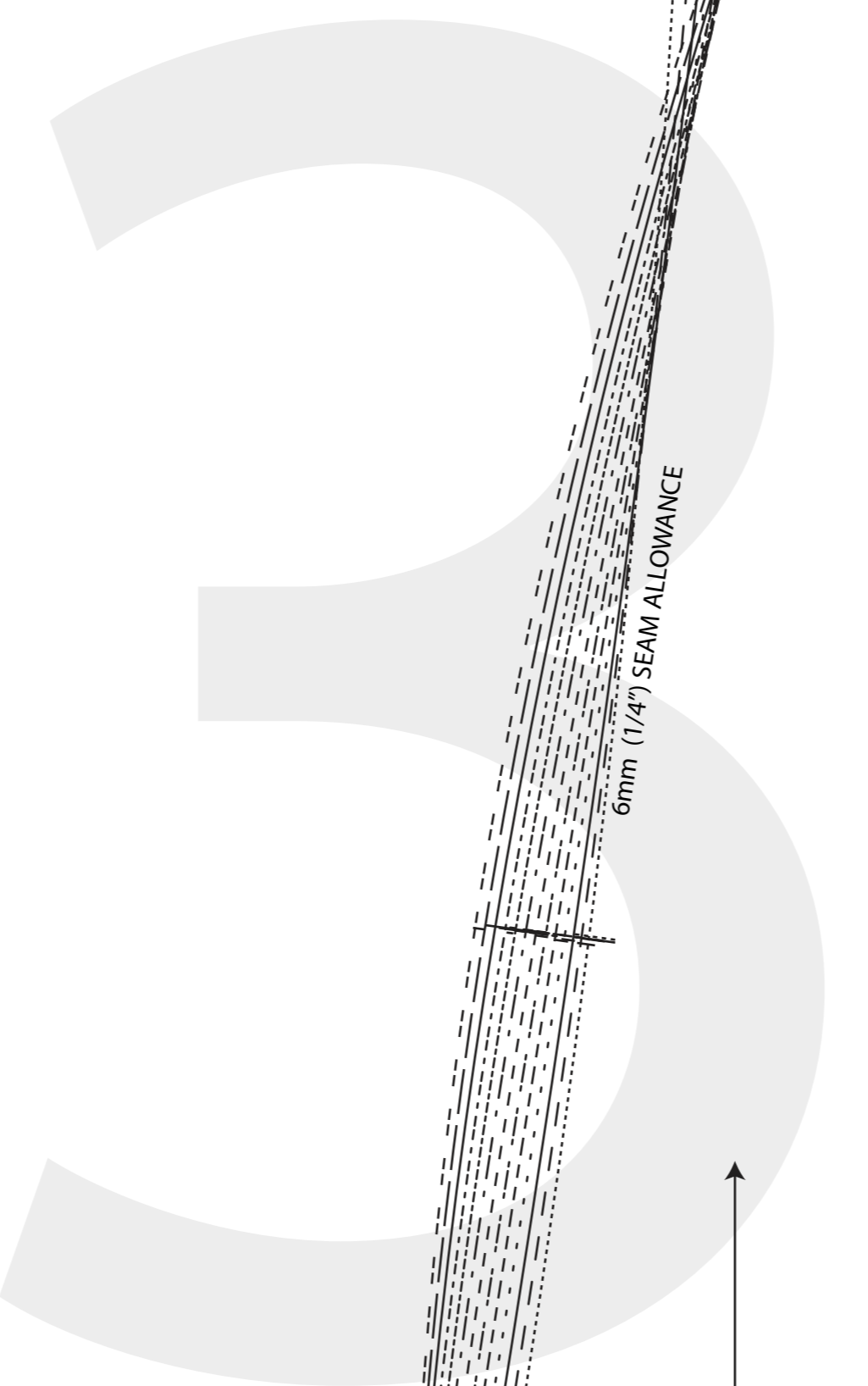
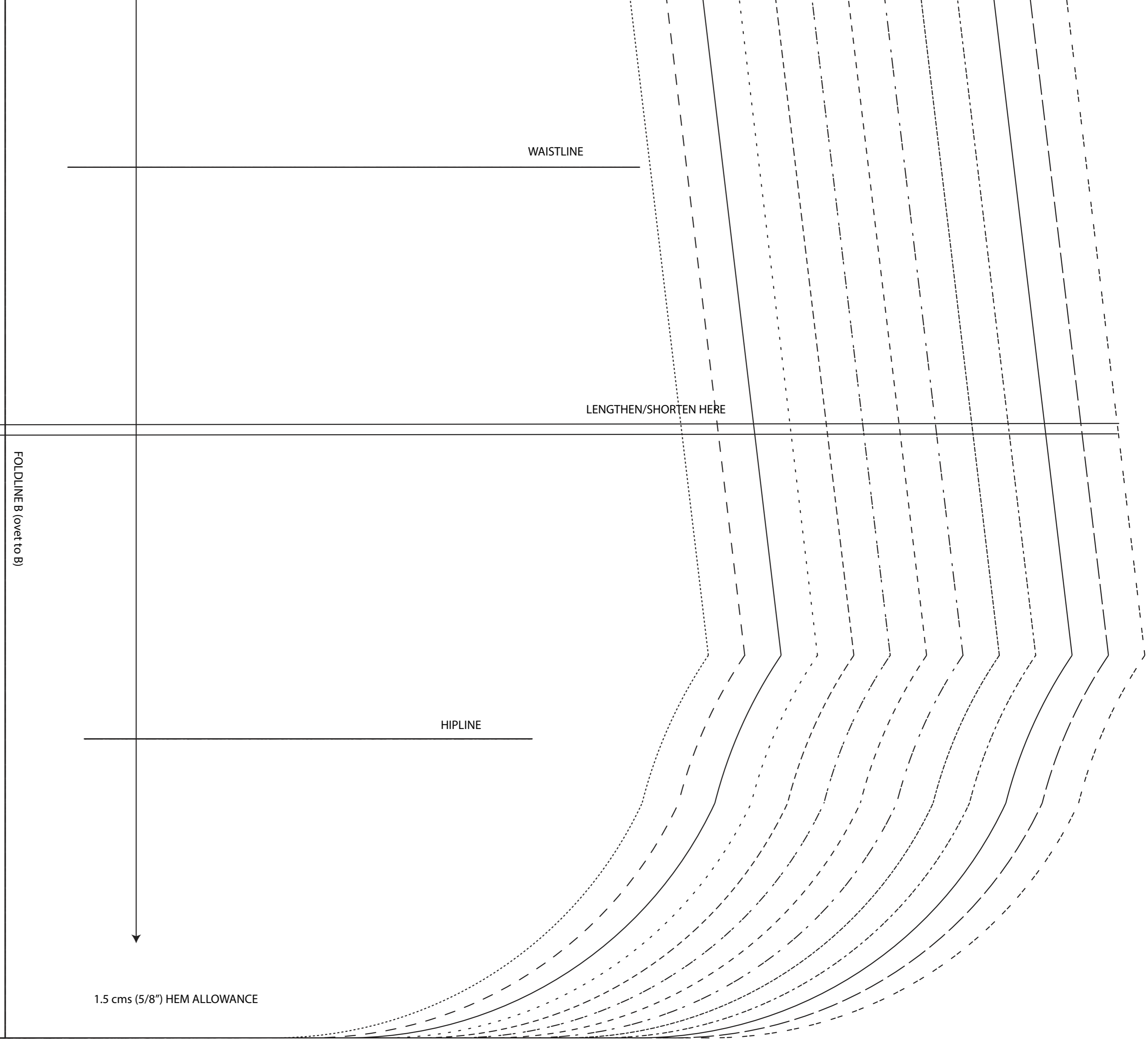
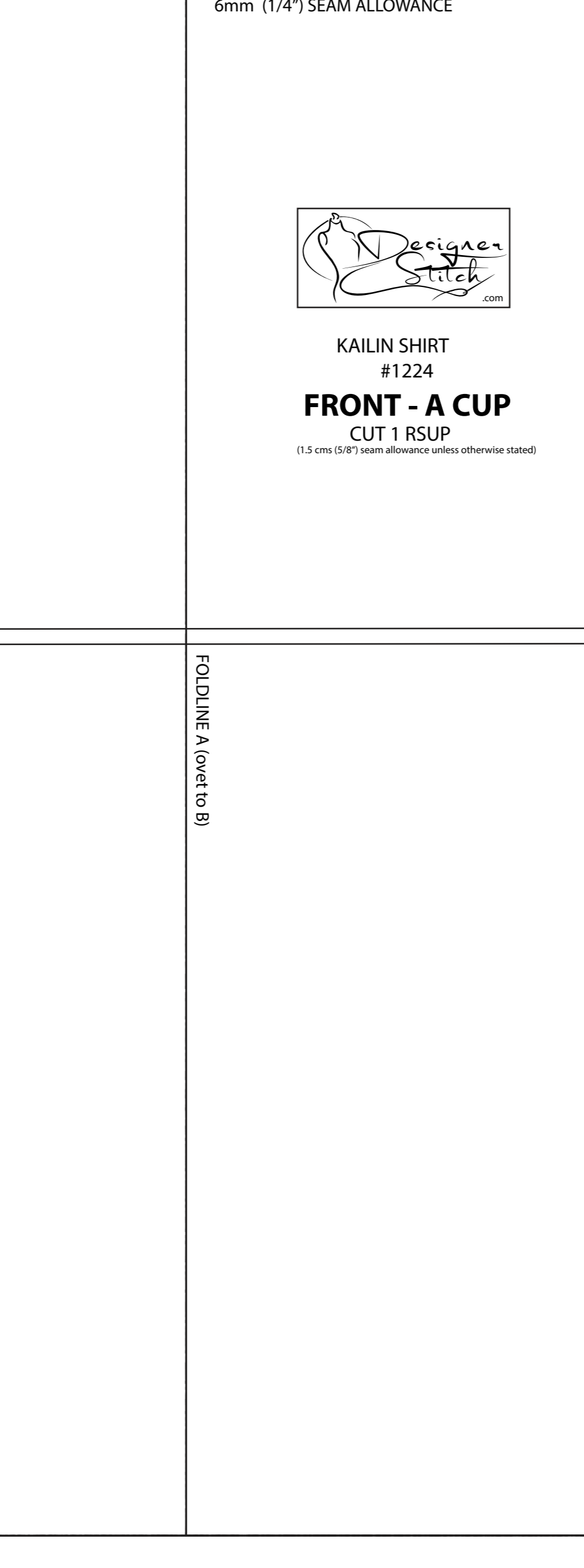
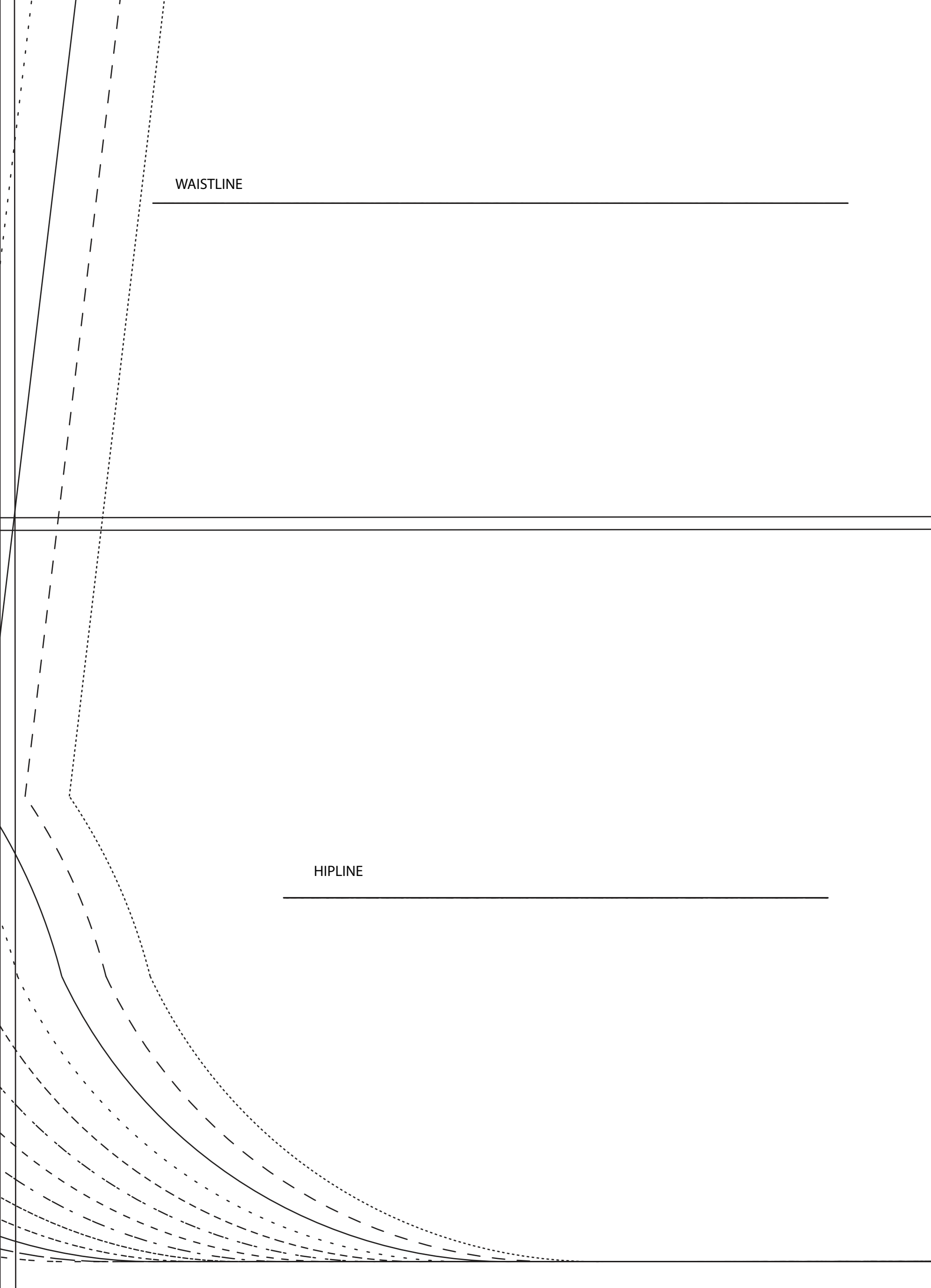
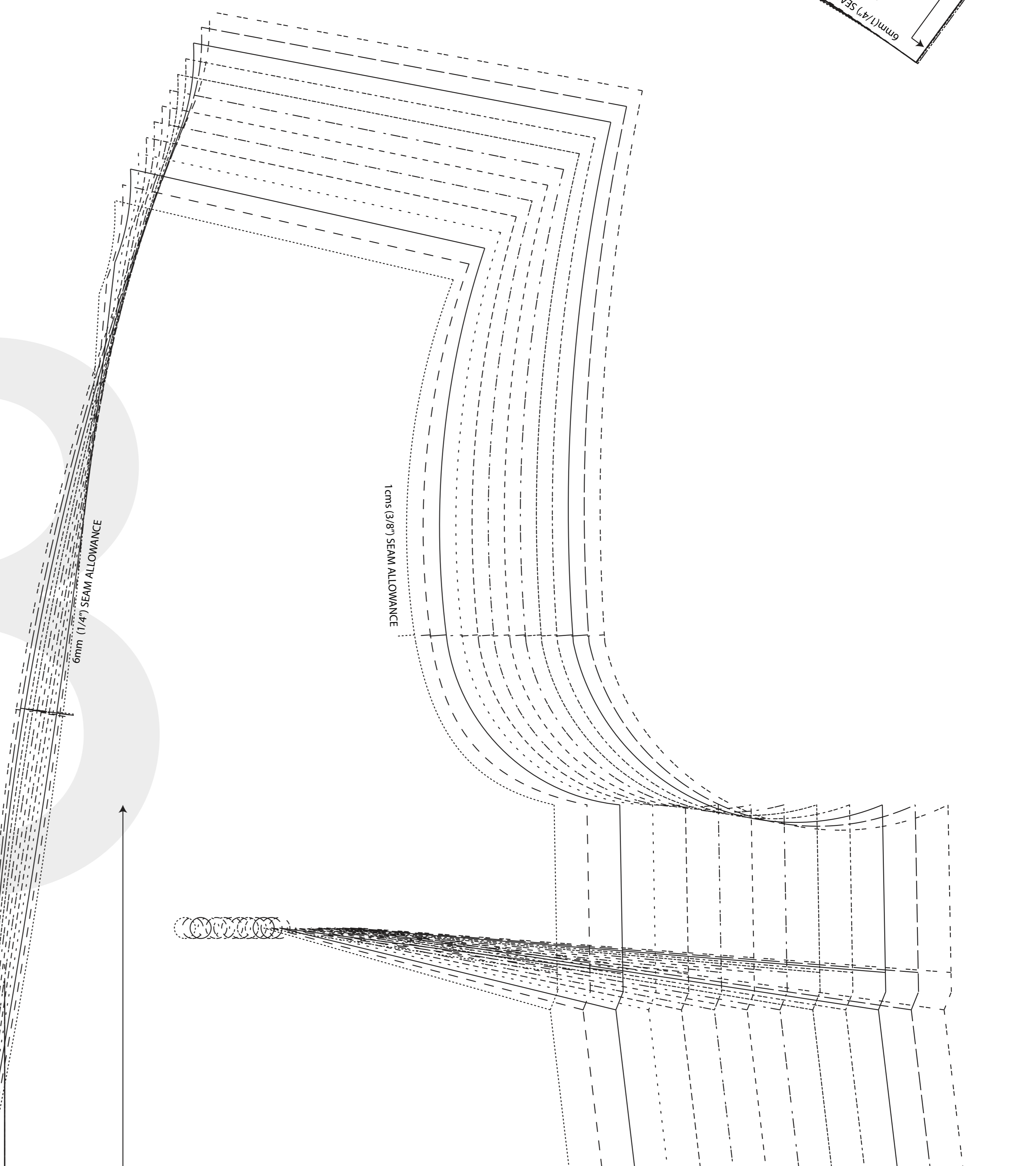
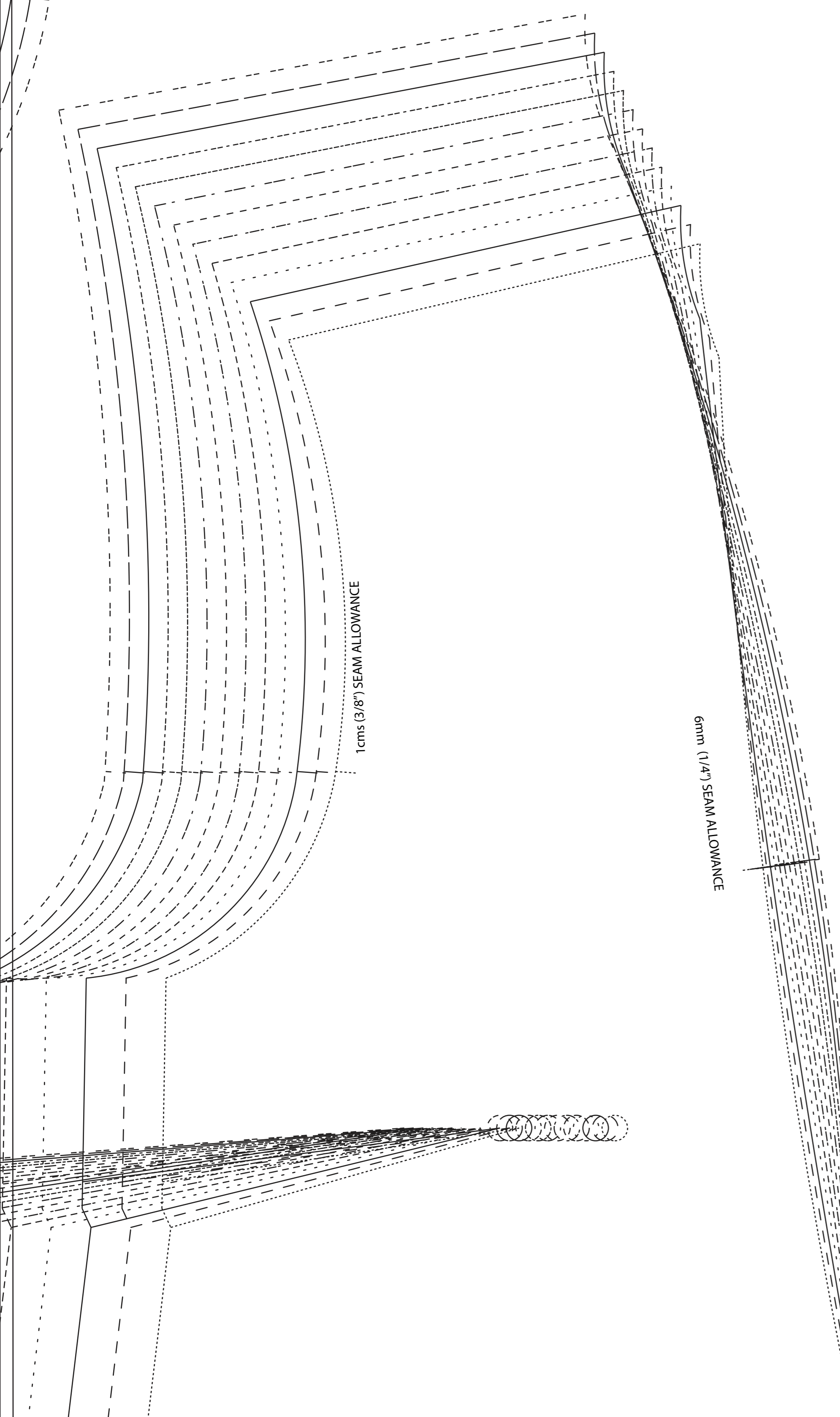
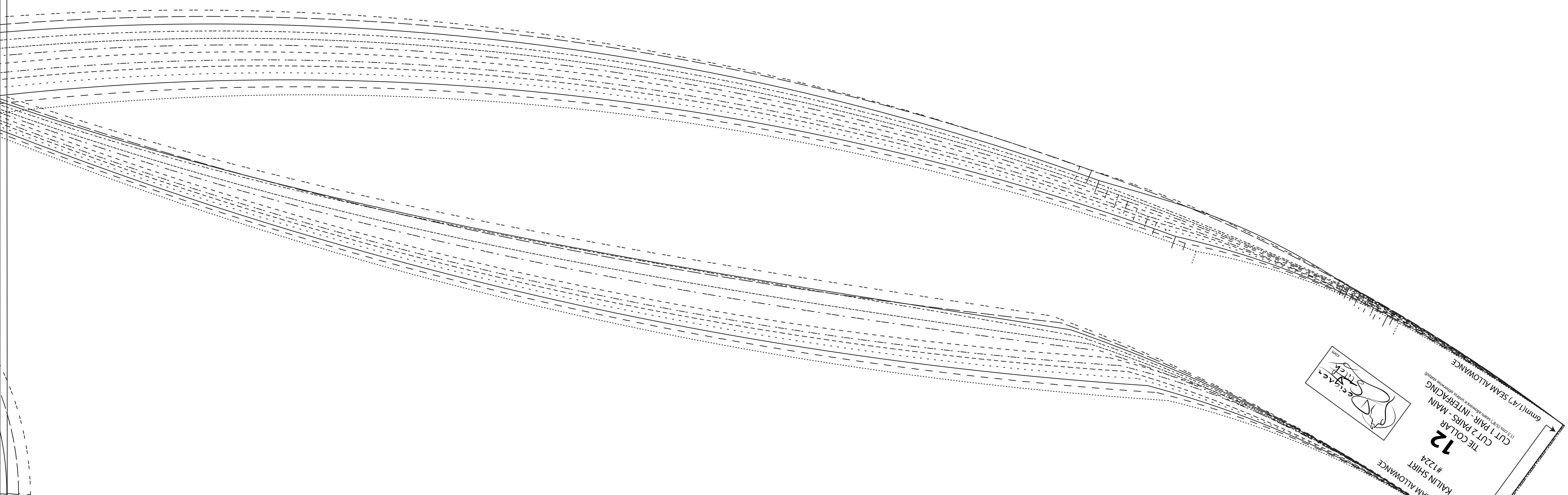
KAILIN SHIRT
#1224
SLEEVE (PLEATED)
CUT 2
CUT HERE SHORT SLEEVE - HEM ALLOWANCE 2.5 cm (1 1/4")

FOLD HERE TO CREATE FACED CUPP.



KAILIN SHIRT
#1224
**FRONT BAND
A - CUP**
Cut 2 PAIR - MAIN
Cut 1 PAIR - INTERFACING

DESIGNER
STITCH
KAILIN SHIRT #1224
THE COLLAR
CUT 2 PAIRS - MAIN
CUT 1 PAIR - INTERFACING
6mm (1/4") SEAM ALLOWANCE



KAILIN SHIRT
#1224
FRONT - A CUP
CUT 1 RSUP
(1.5 cms (5/8") seam allowance unless otherwise stated)

WAISTLINE

WAISTLINE

HIPLINE

HIPLINE

LENGTHEN/SHORTEN HERE

FOLDLINE A (over to B)

FOLDLINE B (over to B)

1.5 cms (5/8") HEM ALLOWANCE