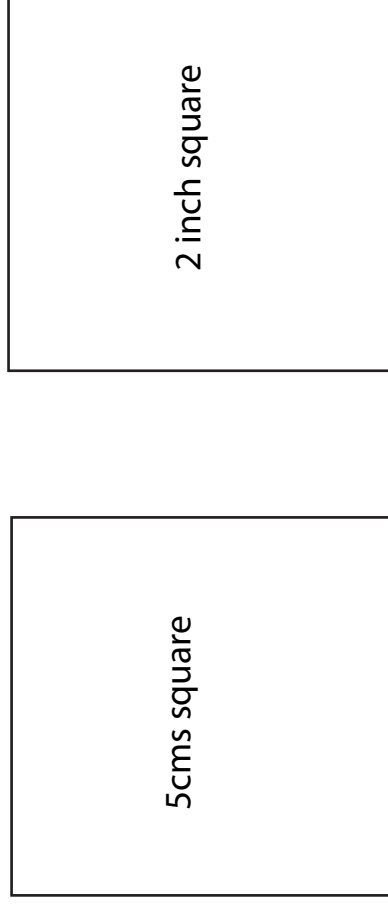


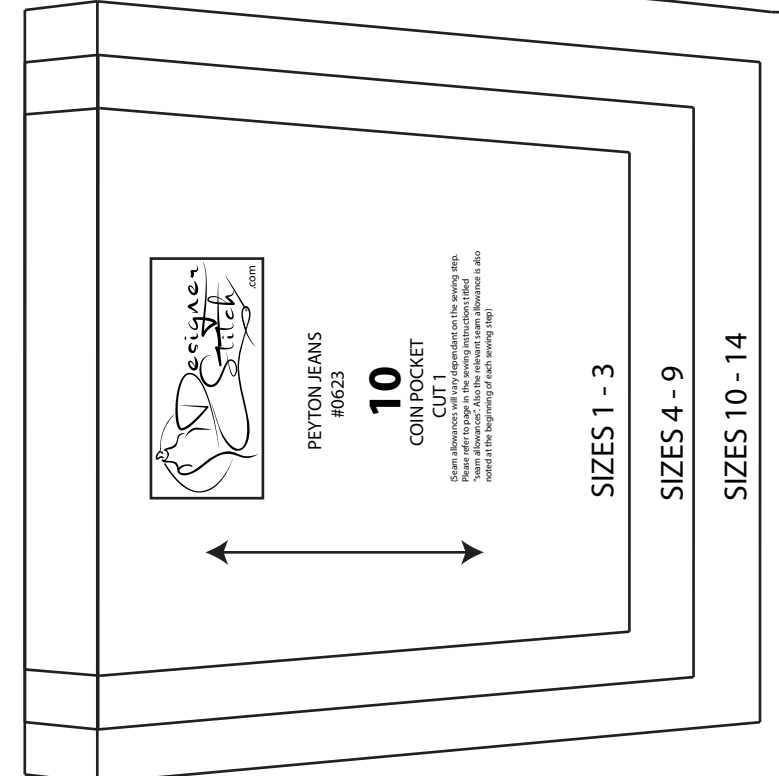


PEYTON JEANS #0623



Sew square

2 inch square



SIZES 1-3

SIZES 4-9

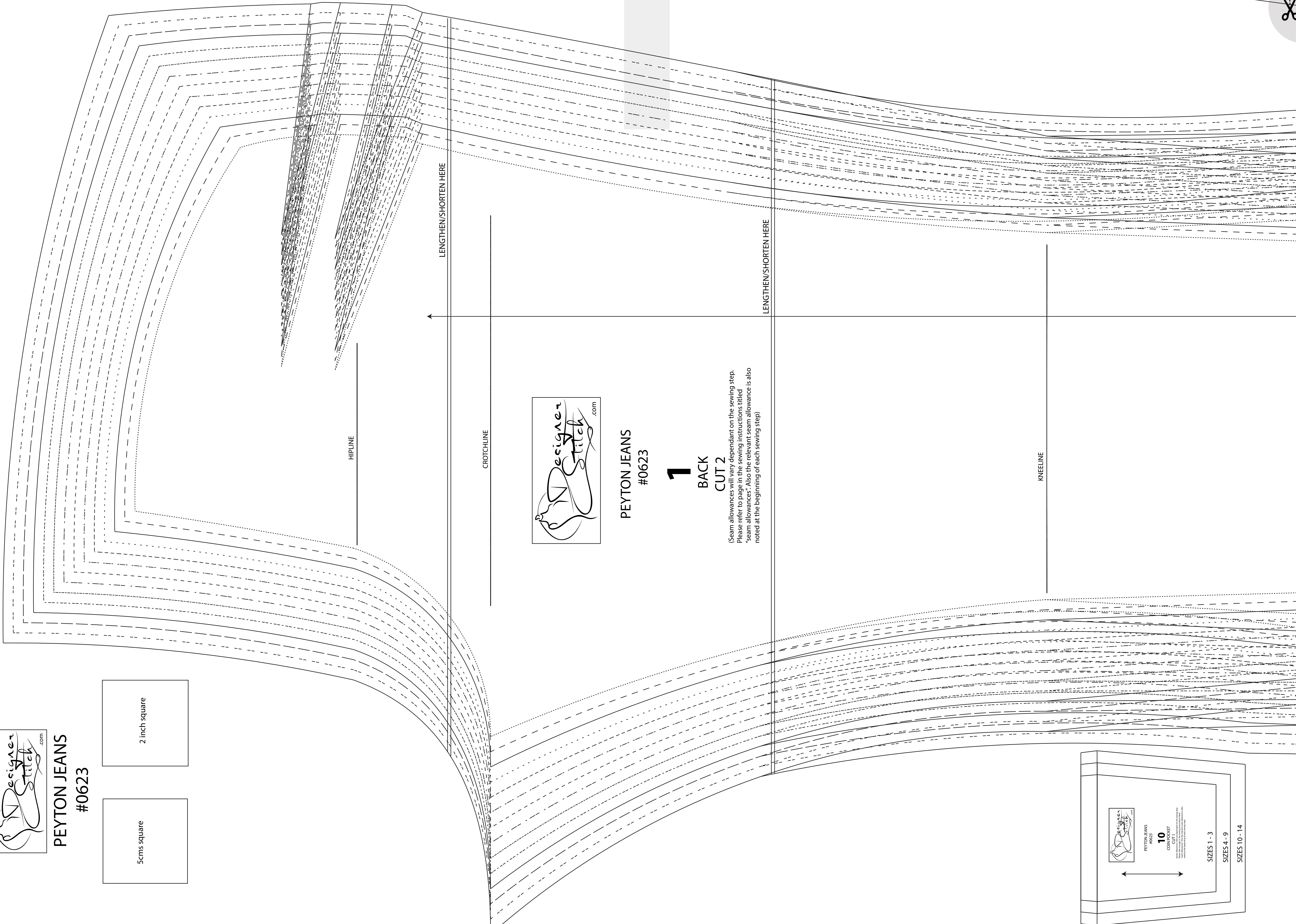
SIZES 10-14



PEYTON JEANS #0623

1 BACK CUT 2

Seam allowances will vary dependent on the sewing step. Please refer to page in the sewing instructions titled "Seam Allowances". Also the relevant seam allowance is also noted at the beginning of each sewing step.



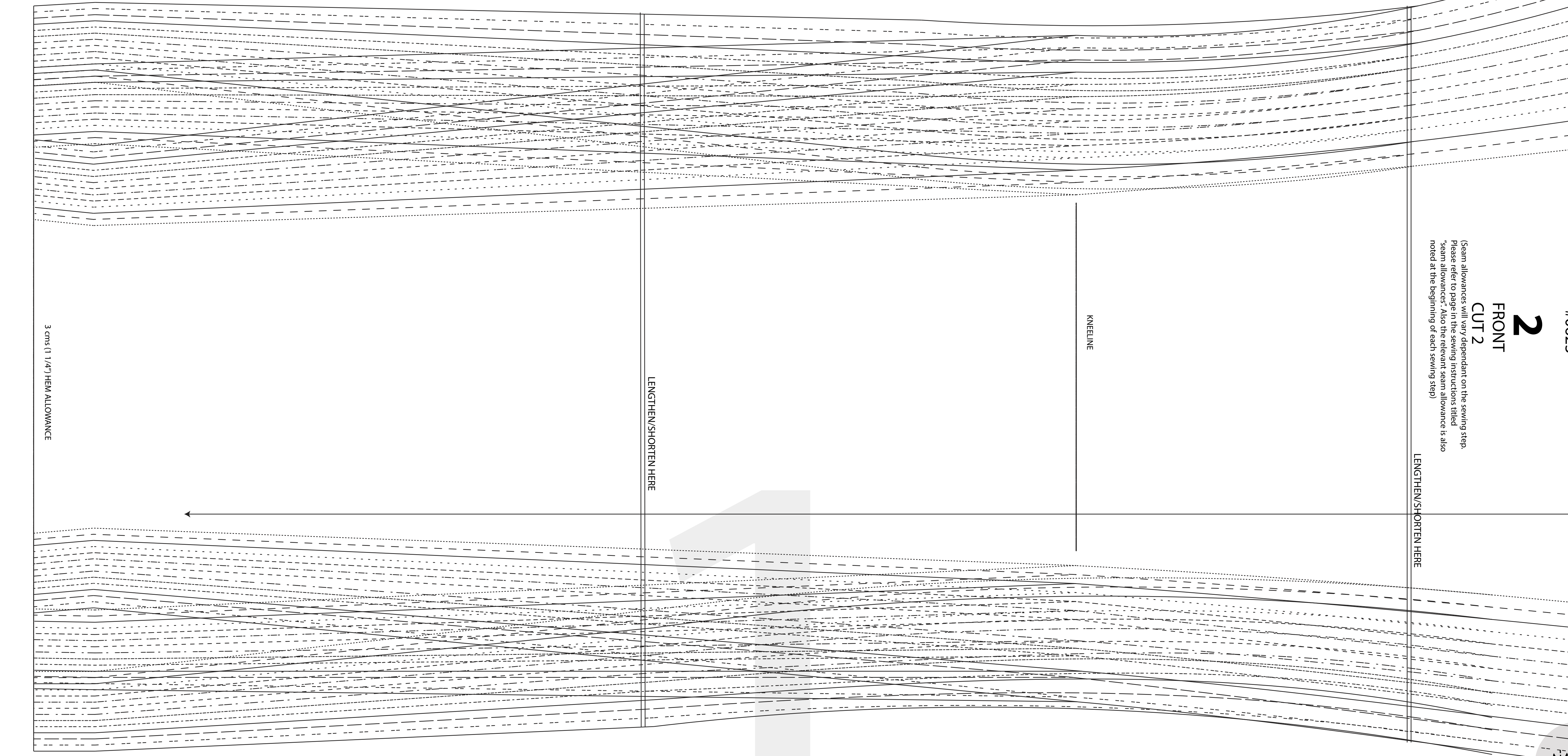
HIPLINE

CROCHLINE

KNEELINE

LENGTHEN/SHORTEN HERE

LENGTHEN/SHORTEN HERE



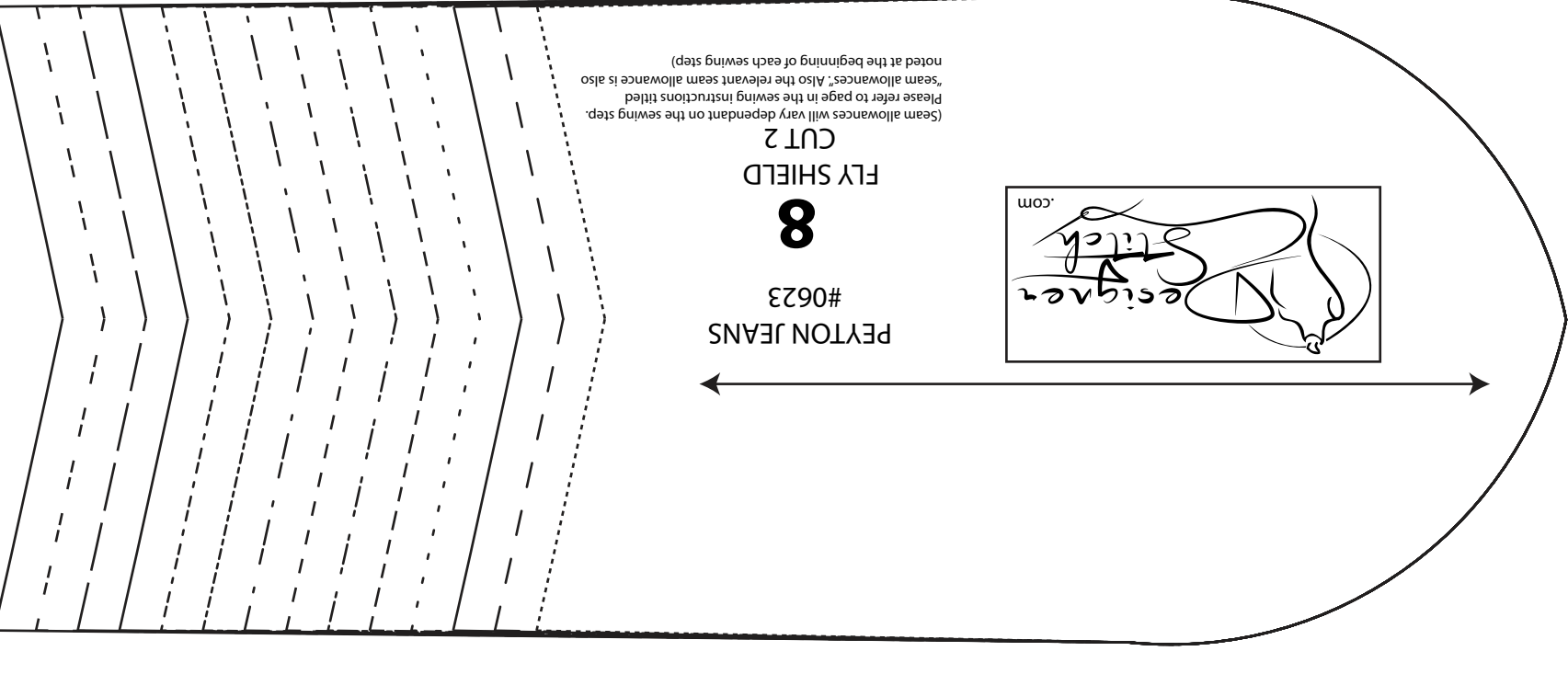
KNEELINE

LENGTHEN/SHORTEN HERE

LENGTHEN/SHORTEN HERE

2 FRONT CUT 2

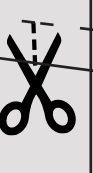
Seam allowances will vary dependent on the sewing step. Please refer to page in the sewing instructions titled "Seam Allowances". Also the relevant seam allowance is also noted at the beginning of each sewing step.

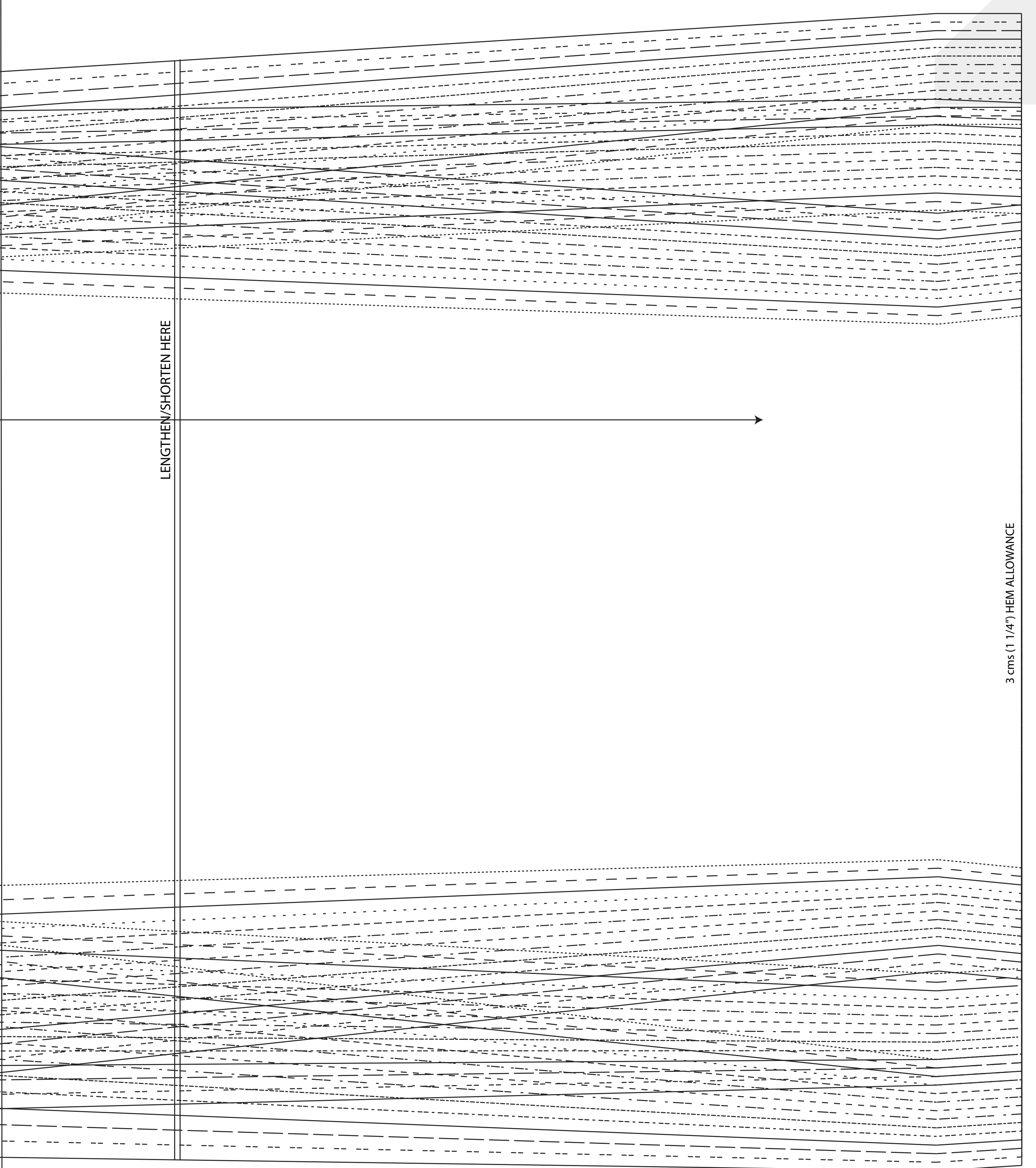
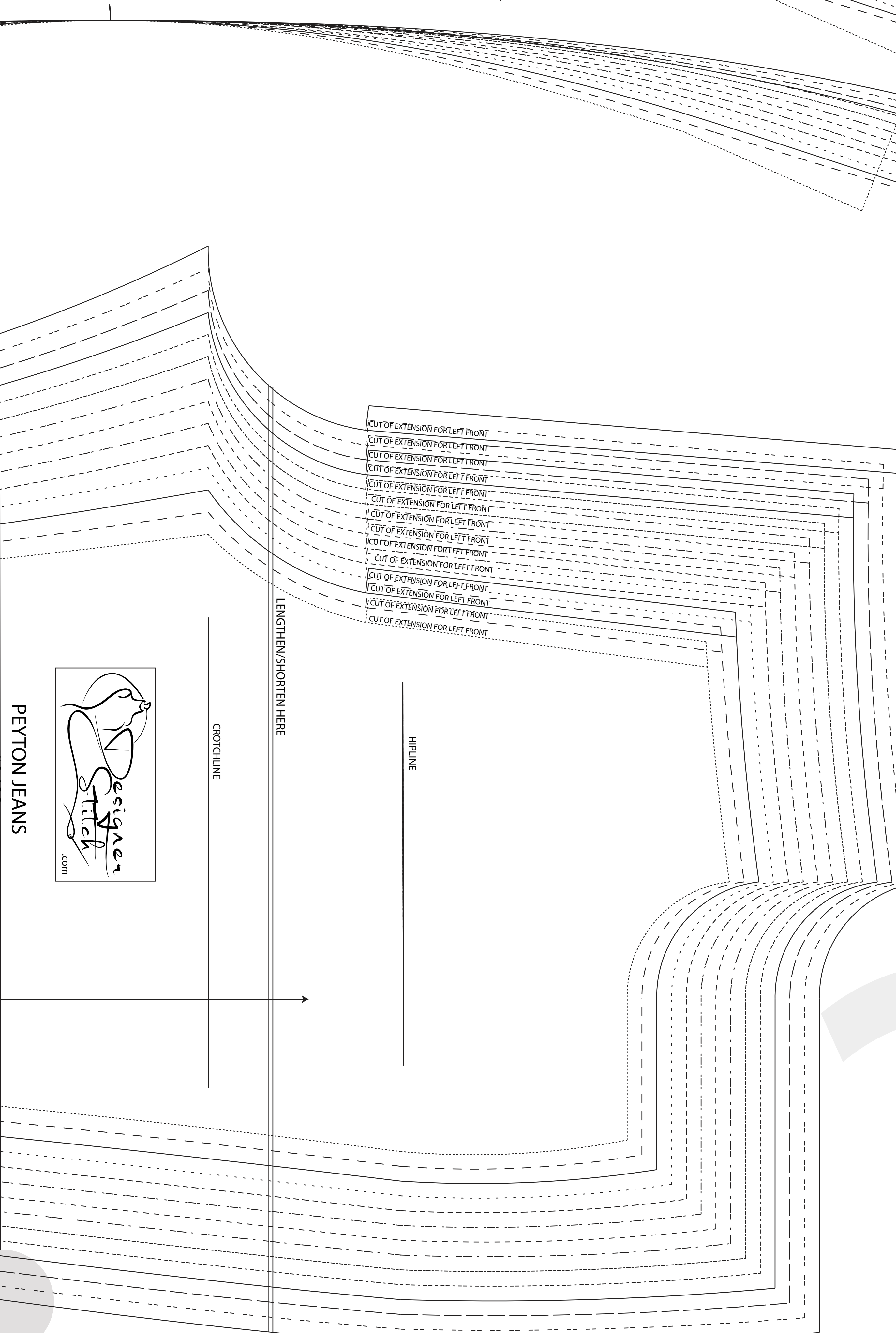
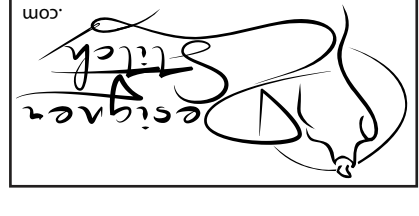


PEYTON JEANS #0623  
FLY SHIELD  
CUT 2  
8



Clear all allowances and any markings on the sewing step. Please refer to page in the sewing instructions titled "Seam Allowances". Also the relevant seam allowance is also noted at the beginning of each sewing step.





**SIZE KEY**

1	.....
2	-----
3	-----
4	-----
5	-----
6	-----
7	-----
8	-----
9	-----
10	-----
11	-----
12	-----
13	-----

3 cms (1 1/4") HEM ALLOWANCE

