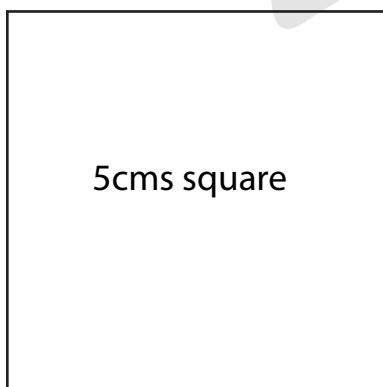


PRINT TILING TEMPLATE GUIDE FOR SIZE SPECIFIC CHOICE
TRIM PRINT AT HOME PATTERN

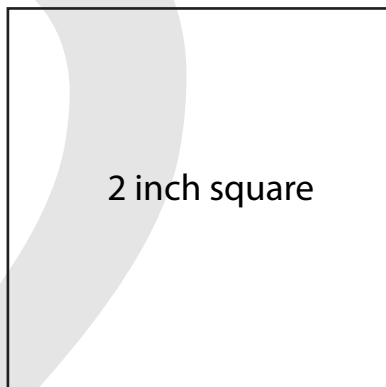


PEYTON JEANS

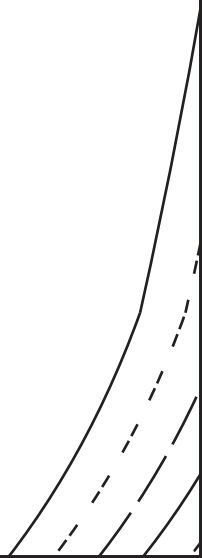
#0623

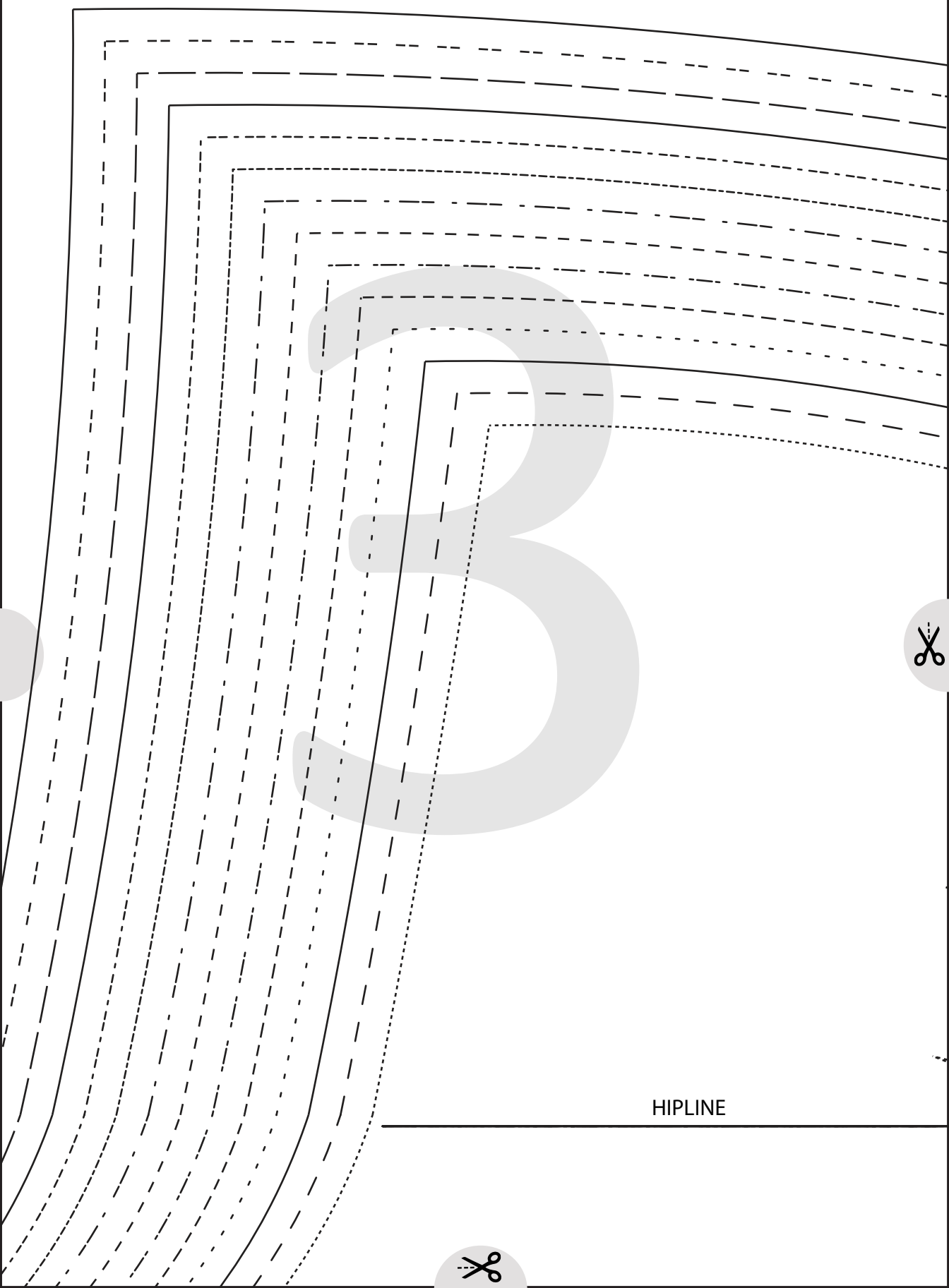


5cms square



2 inch square

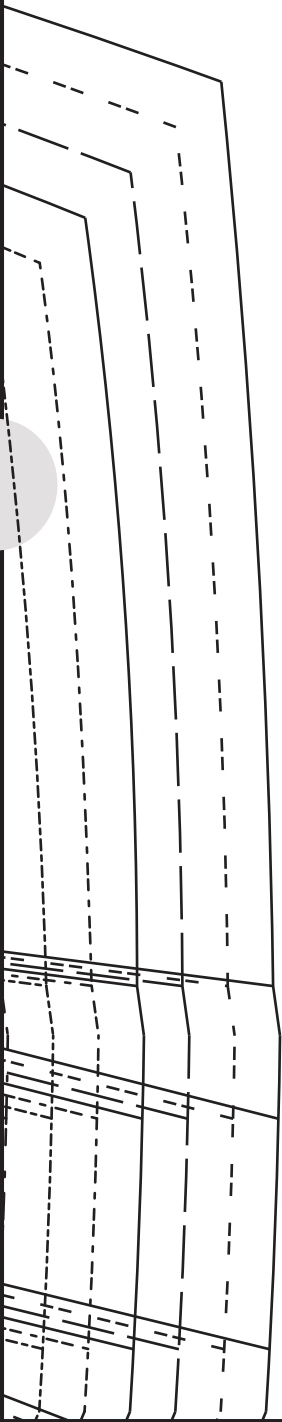




HIPLINE

4





5

CUT OF EXTENSION FOR LEFT FRONT

CUT OF EXTENSION FOR LEFT FRONT

CUT OF EXTENSION FOR LEFT FRONT

CUT OF EXTENSION FOR LEFT FRONT

CUT OF EXTENSION FOR LEFT FRONT

CUT OF EXTENSION FOR LEFT FRONT

CUT OF EXTENSION FOR LEFT FRONT

CUT OF EXTENSION FOR LEFT FRONT

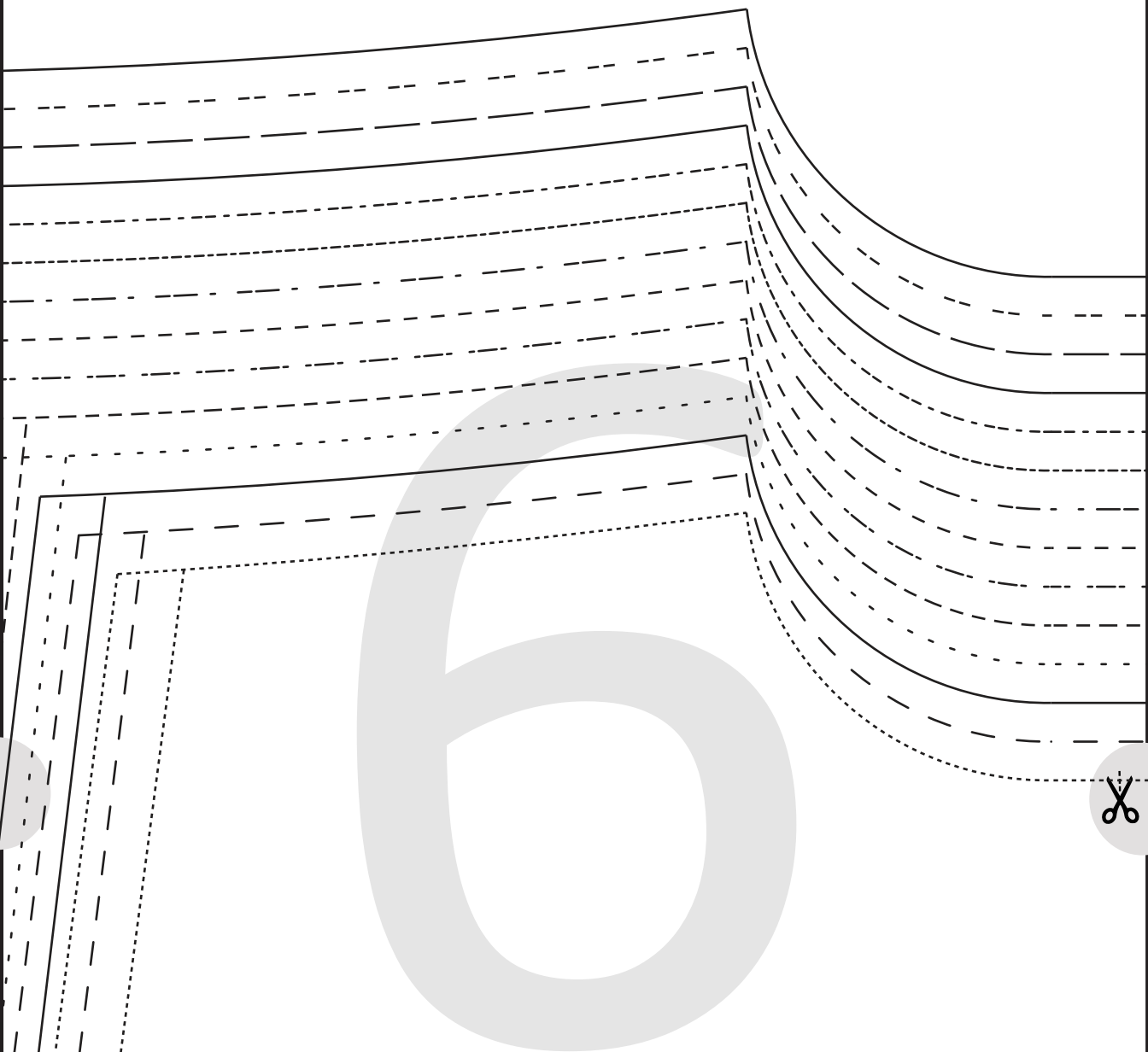
CUT OF EXTENSION FOR LEFT FRONT

CUT OF EXTENSION FOR LEFT FRONT

CUT OF EXTENSION FOR LEFT FRONT

CUT OF EXTENSION FOR LEFT FRONT

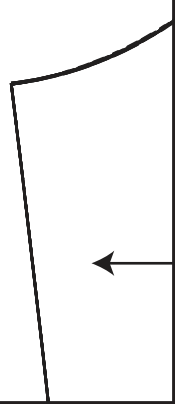
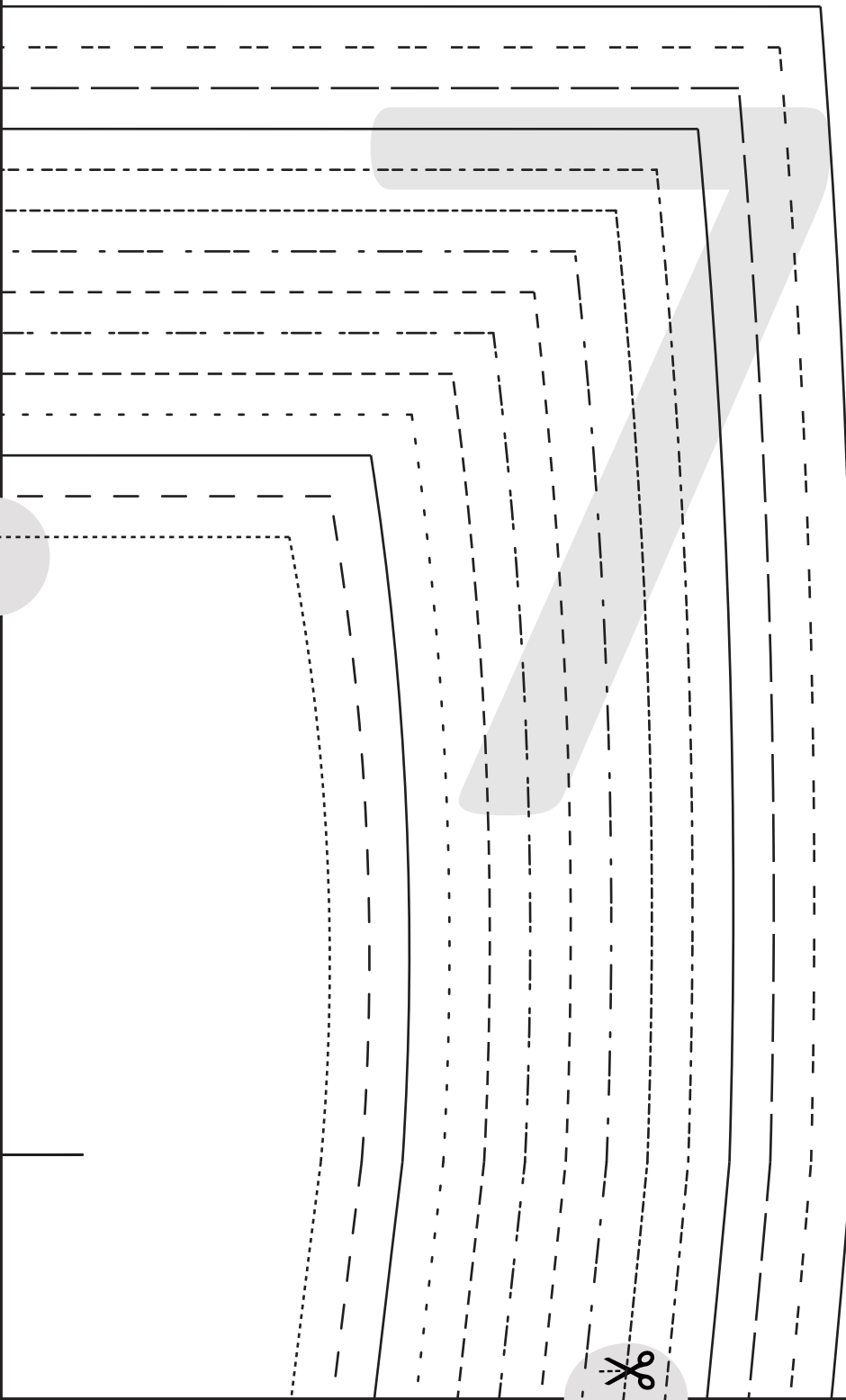


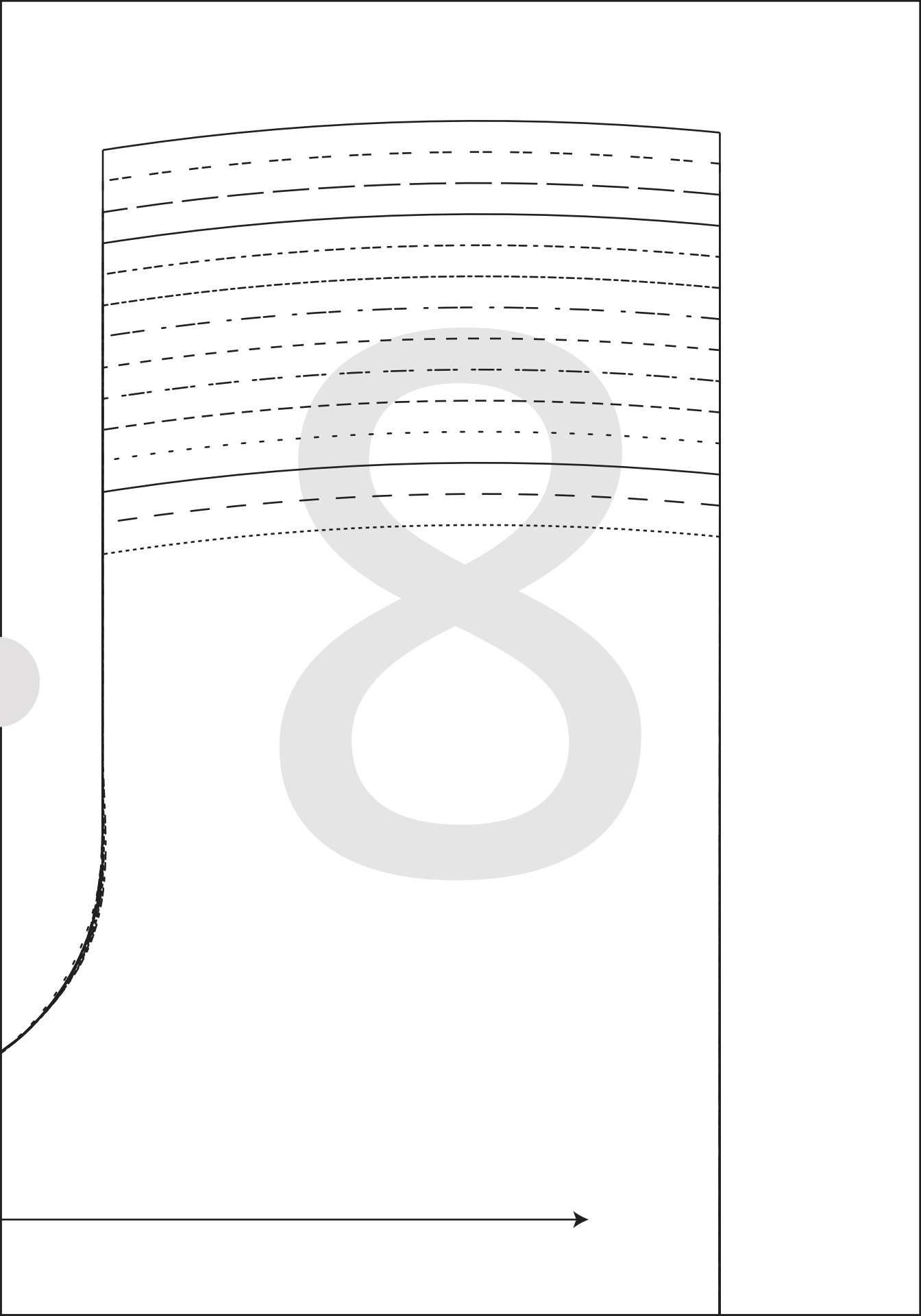


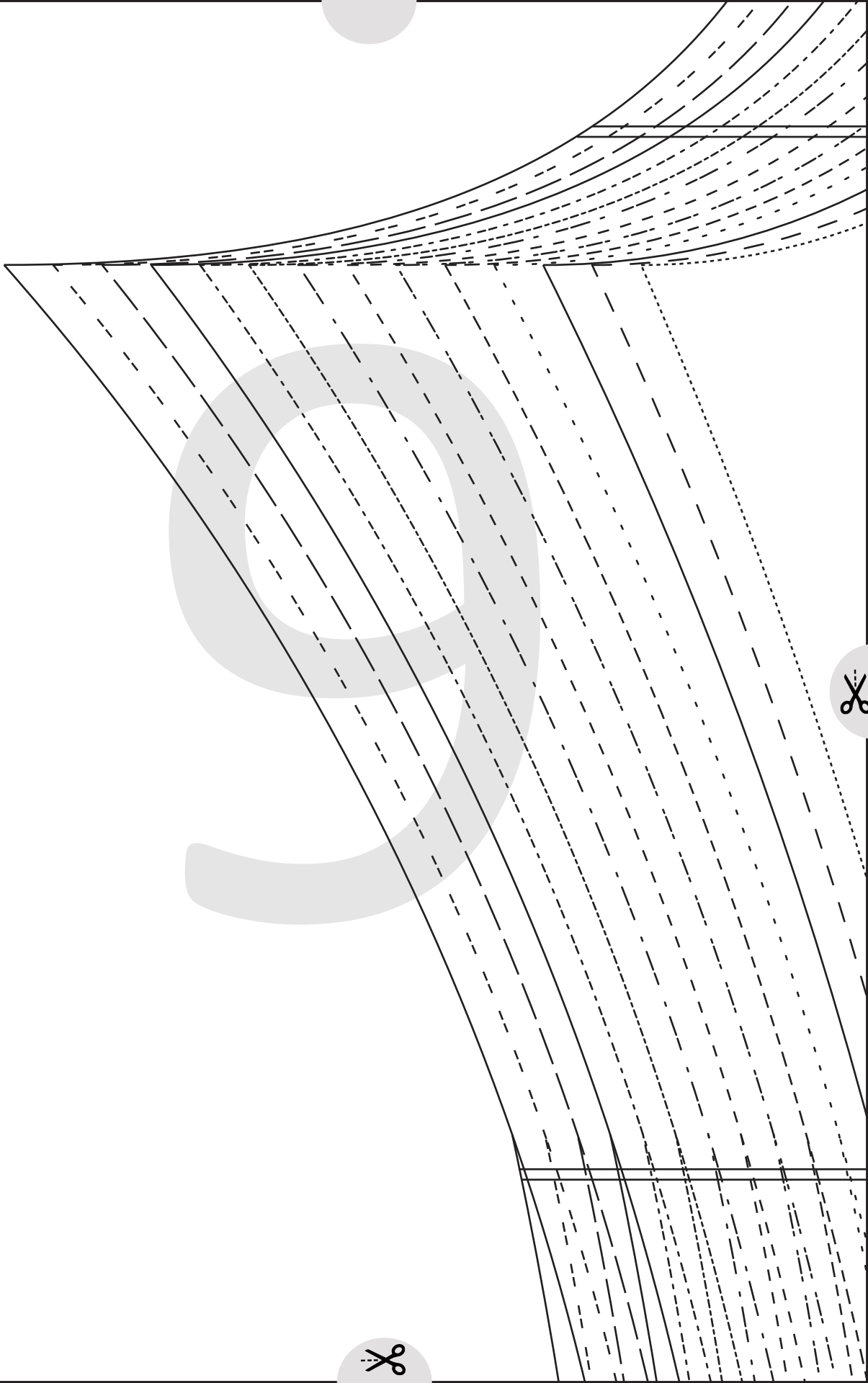
CUT OF EXTENSION FOR LEFT FRONT
CUT OF EXTENSION FOR LEFT FRONT
CUT OF EXTENSION FOR LEFT FRONT

HIPLINE









CROTCHLINE



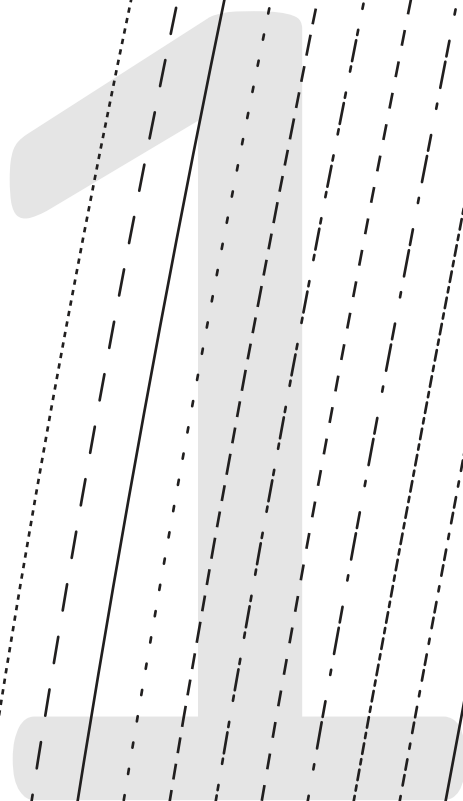
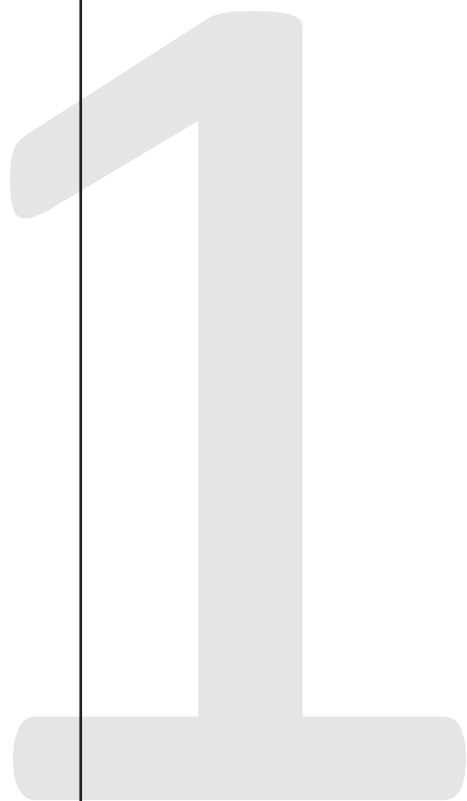
PEYTON JEANS
#0623

1

BACK
CUT 2

(Seam allowances will vary dependant on the sewing step. Please refer to page in the sewing instructions titled "seam allowances". Also the relevant seam allowance is also noted at the beginning of each sewing step)

LENGTHEN/SHORTEN HERE



LENGTHEN/SHORTEN HERE



1

2



LENGTHEN/SHORTEN HERE

CROTCHLINE



PEYTON JEANS

#0623

2

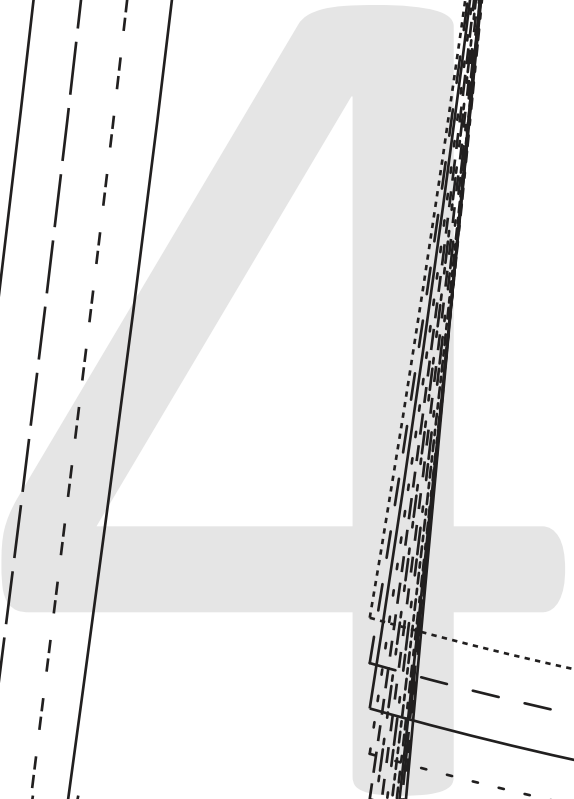
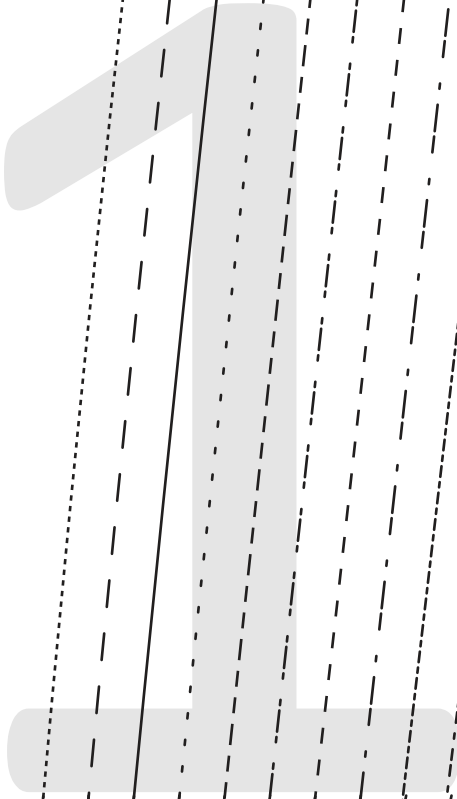
FRONT

CUT 2

(Seam allowances will vary dependant on the sewing step. Please refer to page in the sewing instructions titled "seam allowances". Also the relevant seam allowance is also noted at the beginning of each sewing step)

LENGTHEN/SHORTEN

HERE





PEYTON JEANS

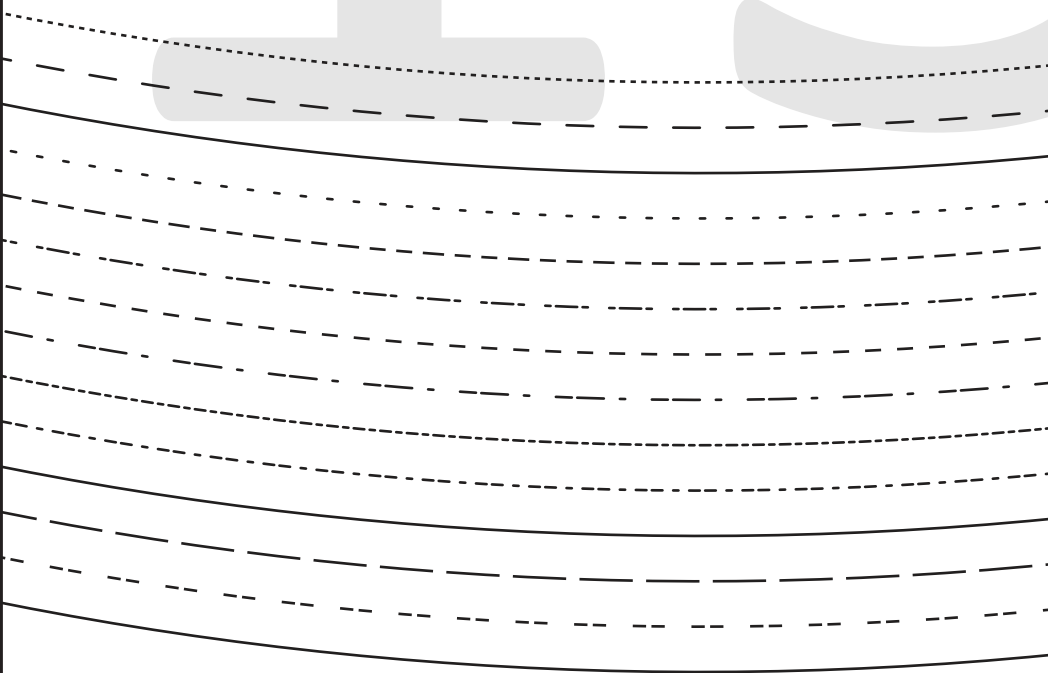
#0623

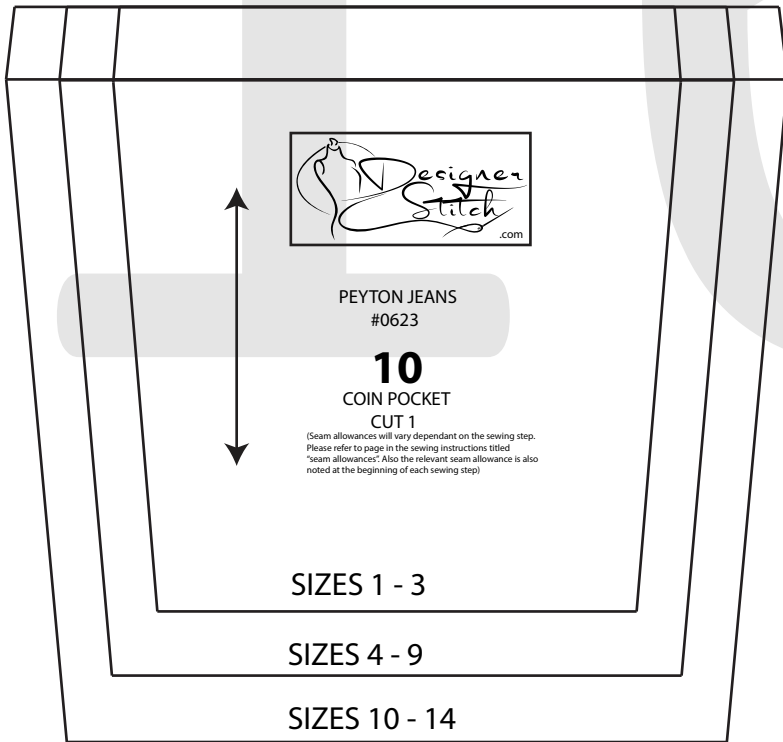
3

POCKET BAG

CUT 2 - POCKETING

(Seam allowances will vary dependant on the sewing step. Please refer to page in the sewing instructions titled "seam allowances". Also the relevant seam allowance is also noted at the beginning of each sewing step)





PEYTON JEANS
#0623

10

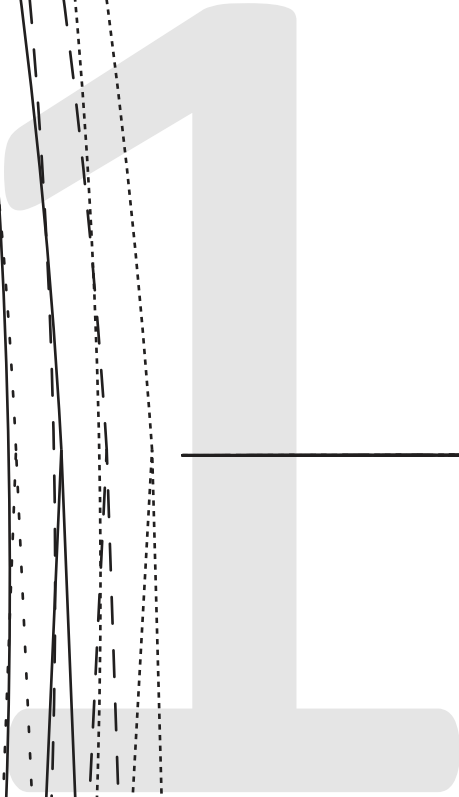
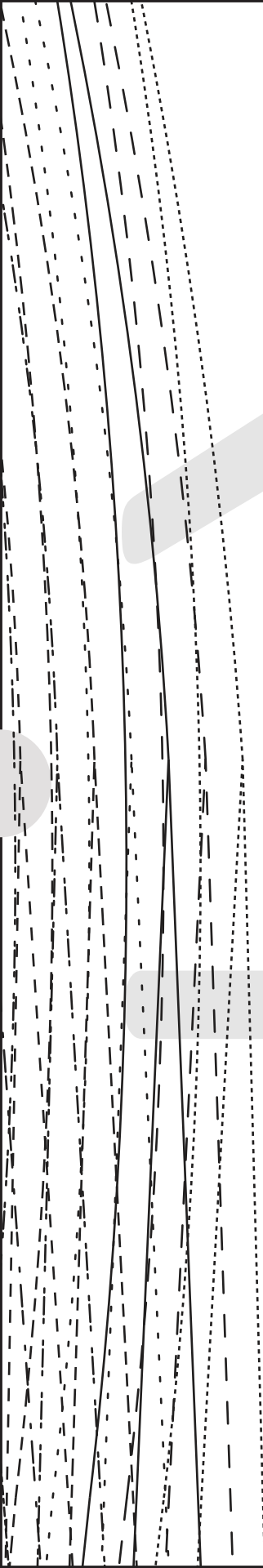
COIN POCKET
CUT 1

(Seam allowances will vary dependant on the sewing step.
Please refer to page in the sewing instructions titled
"seam allowances". Also the relevant seam allowance is also
noted at the beginning of each sewing step)

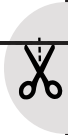
SIZES 1 - 3

SIZES 4 - 9

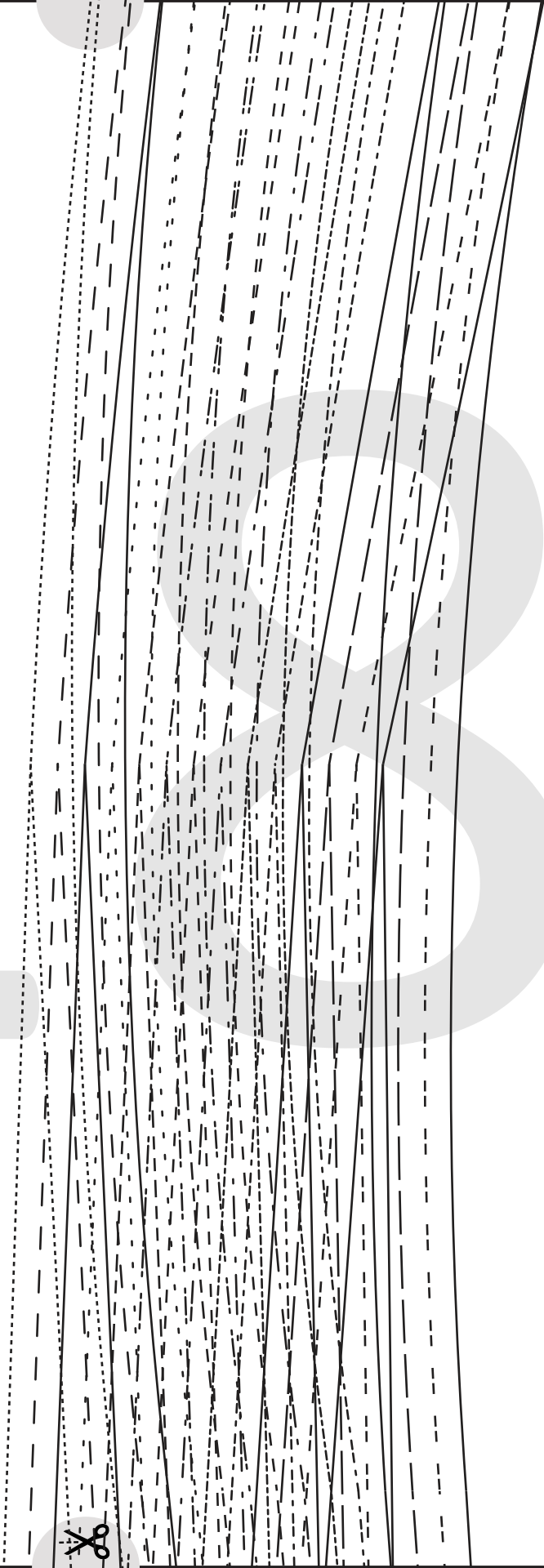
SIZES 10 - 14



KNEELINE



1



1

2

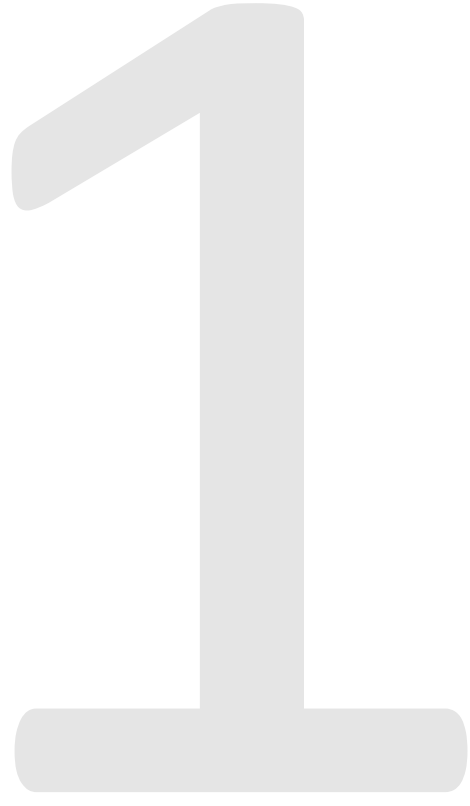
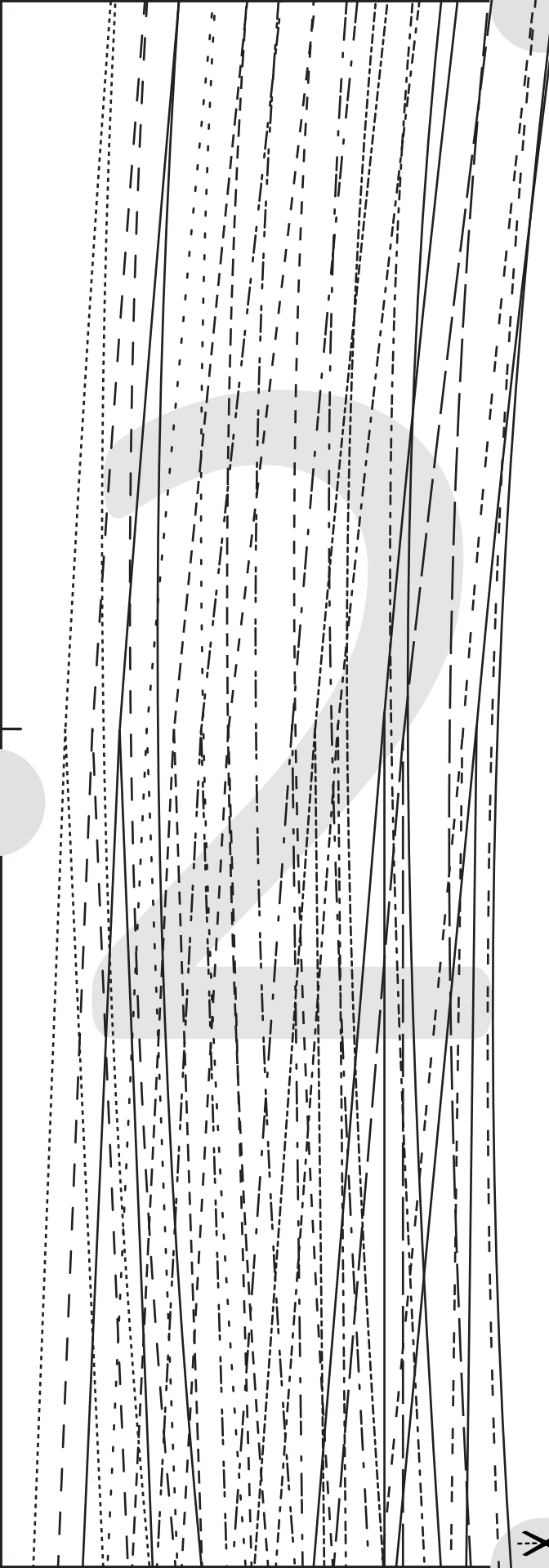




20

KNEELINE





SIZE KEY

1
.....

2 - - - - -
- - - - -

3 _____

4
.....

5 - - - - -
- - - - -

6
.....

7 - - - - -
- - - - -

8 - - - - -
- - - - -

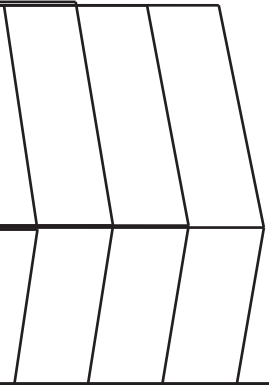
9
.....

10
.....

11 _____

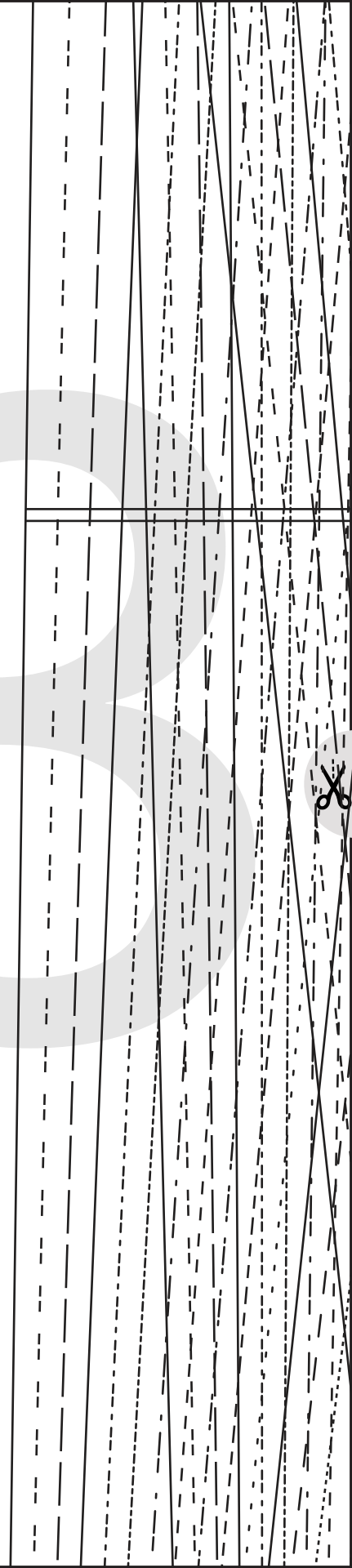
12 - - - - -
- - - - -

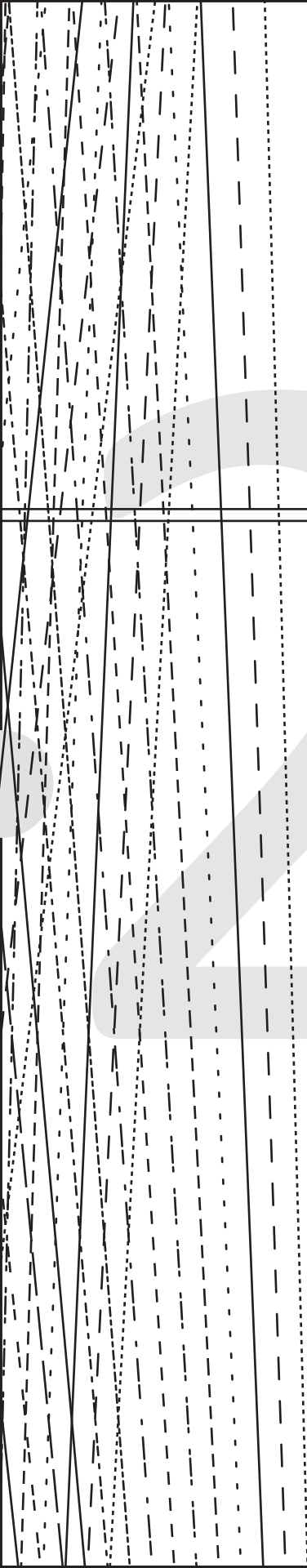
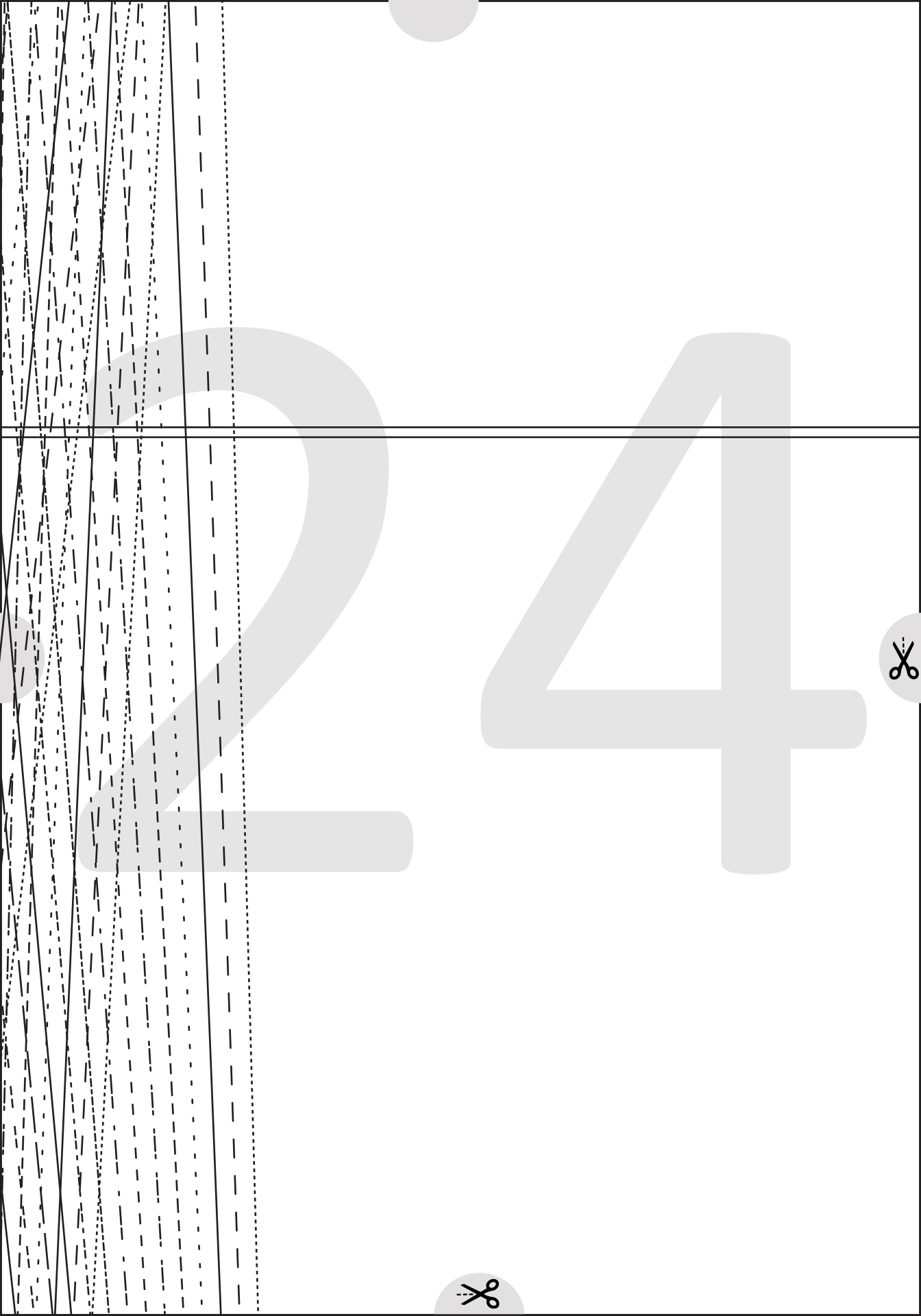
13
.....



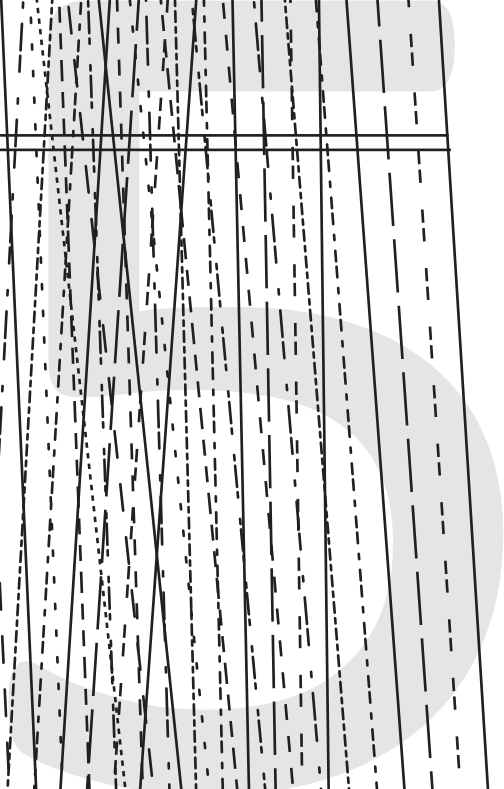
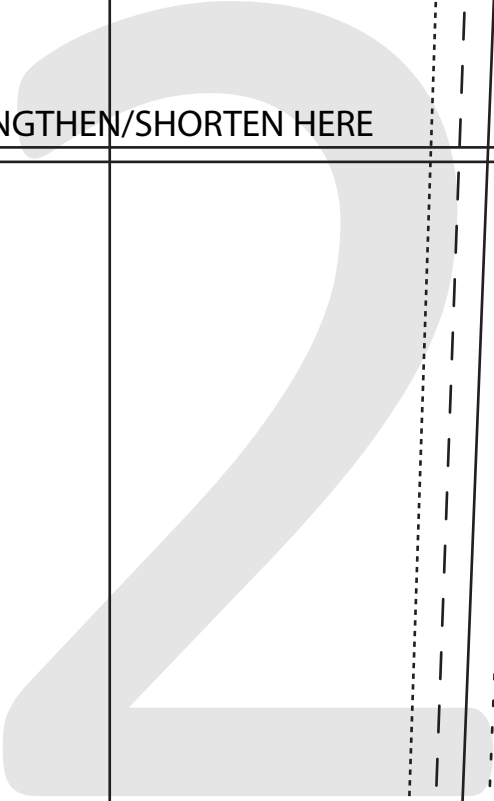
2

3

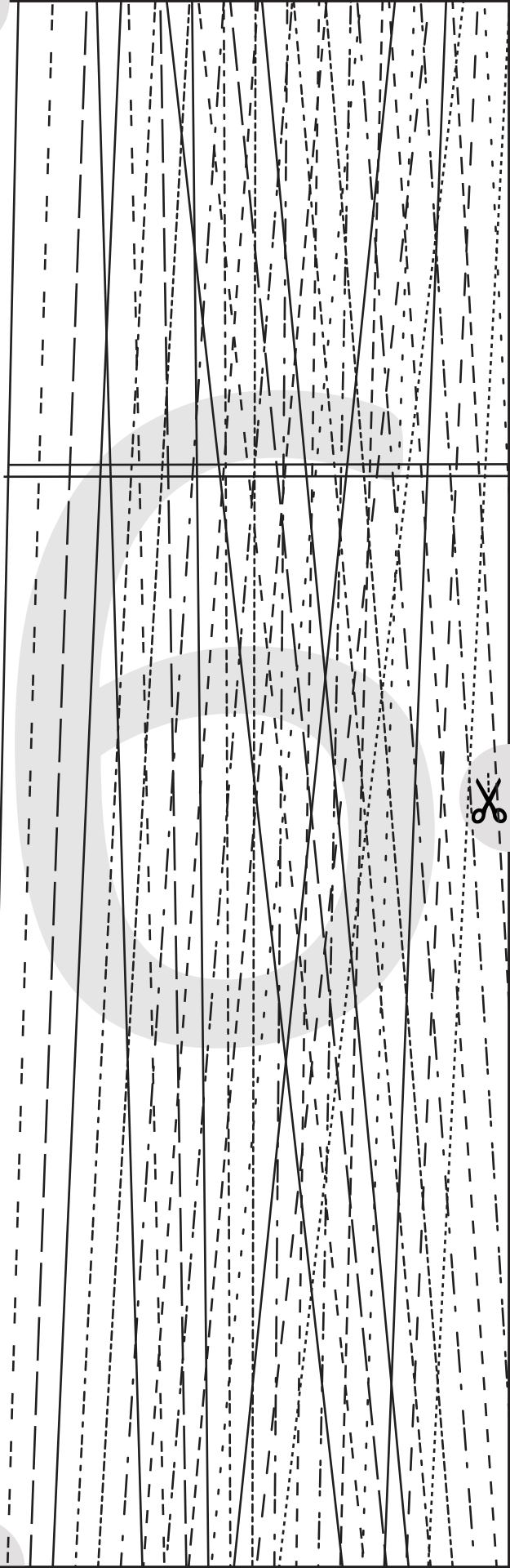




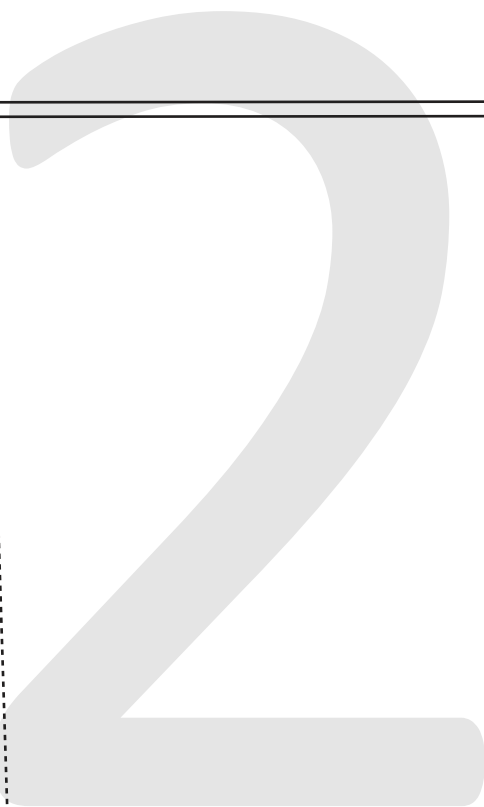
LENGTHEN/SHORTEN HERE

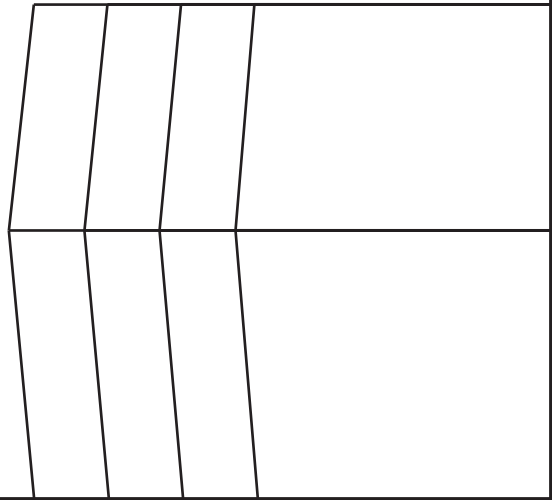
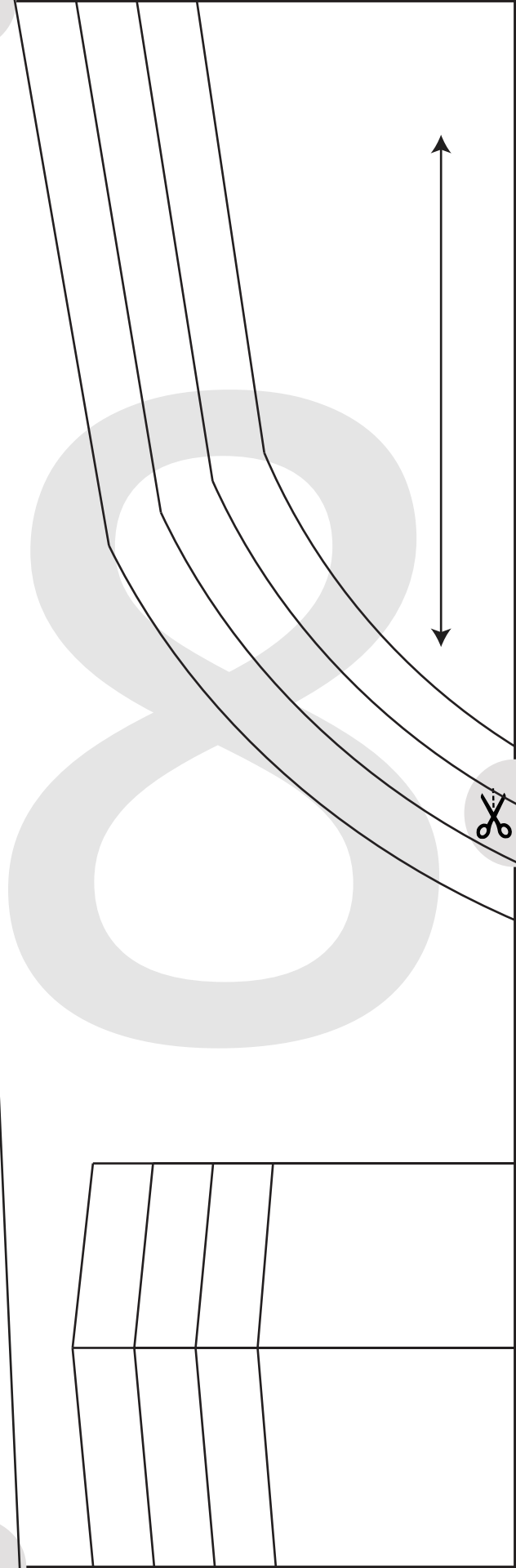
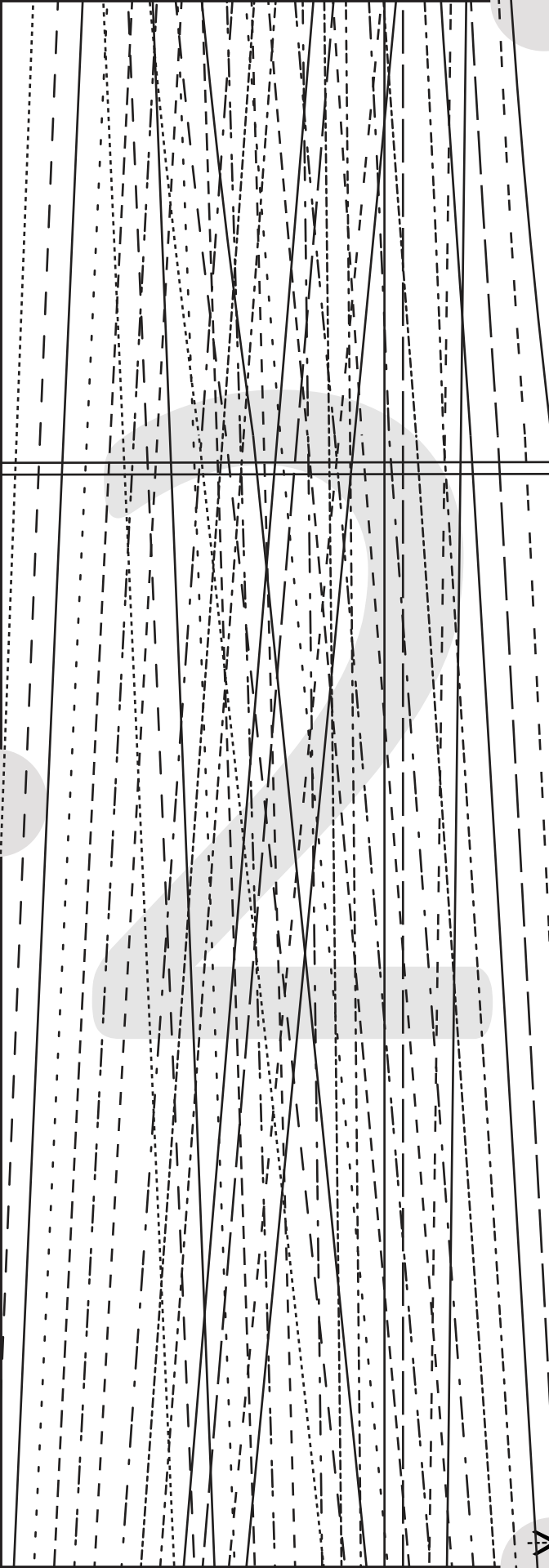


2



LENGTHEN/SHORTEN HERE







PEYTON JEANS

#0623

11

POCKET STYLE 1

CUT 1

(Seam allowances will vary dependant on the sewing step. Please refer to page in the sewing instructions titled "seam allowances". Also the relevant seam allowance is also noted at the beginning of each sewing step)

SIZES 1 - 3

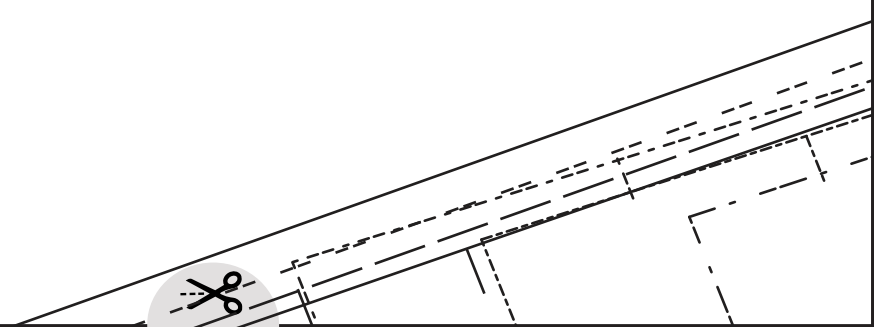
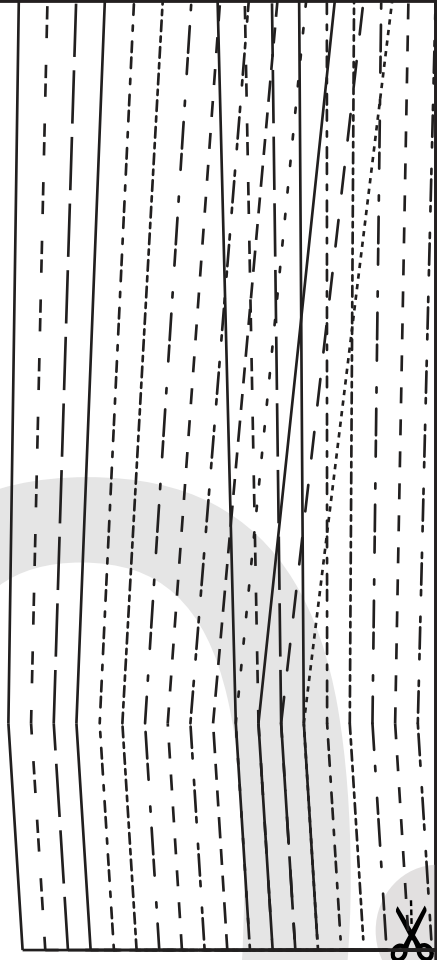
SIZES 4 - 7

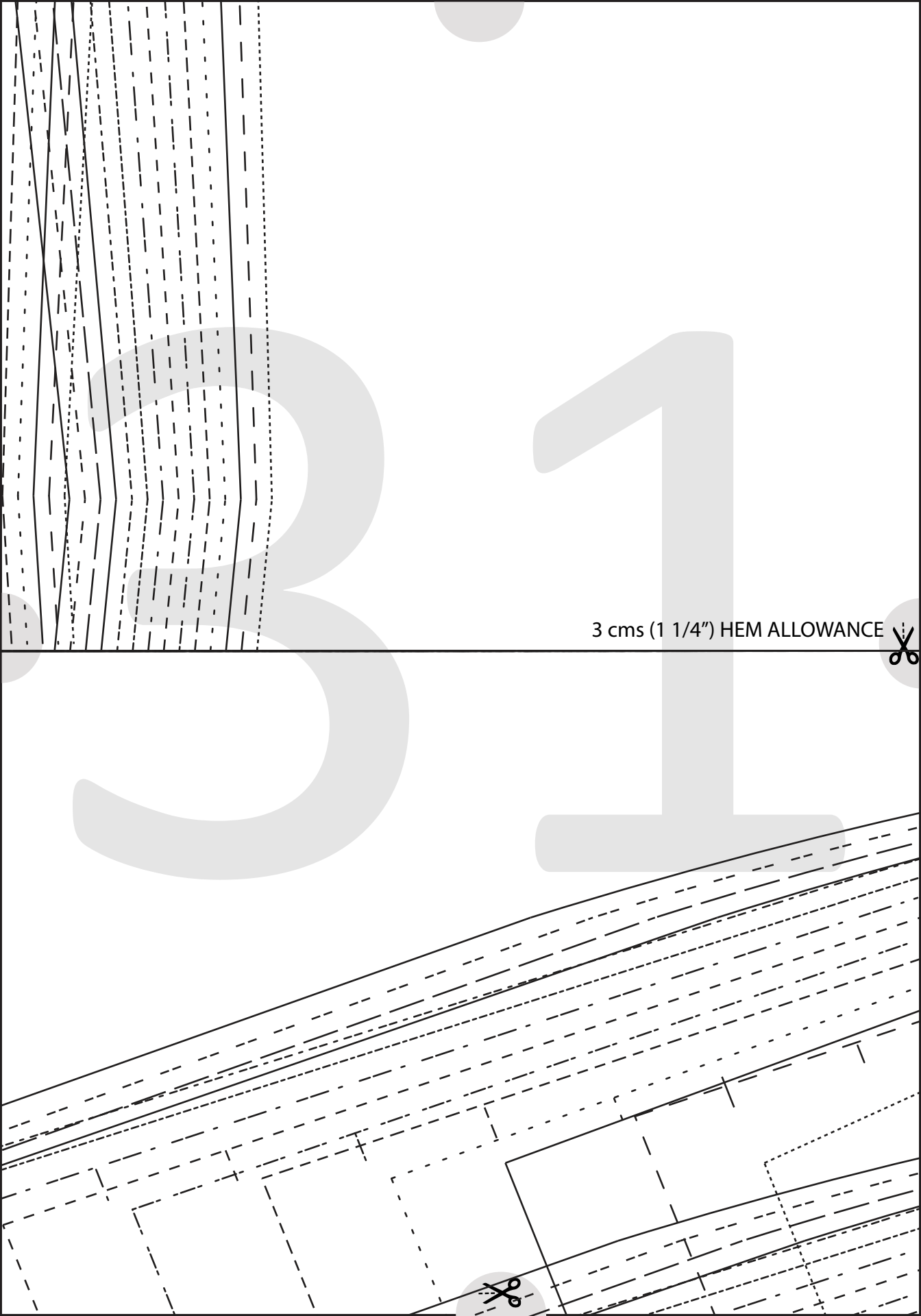
SIZES 8 - 10

SIZES 11 - 14



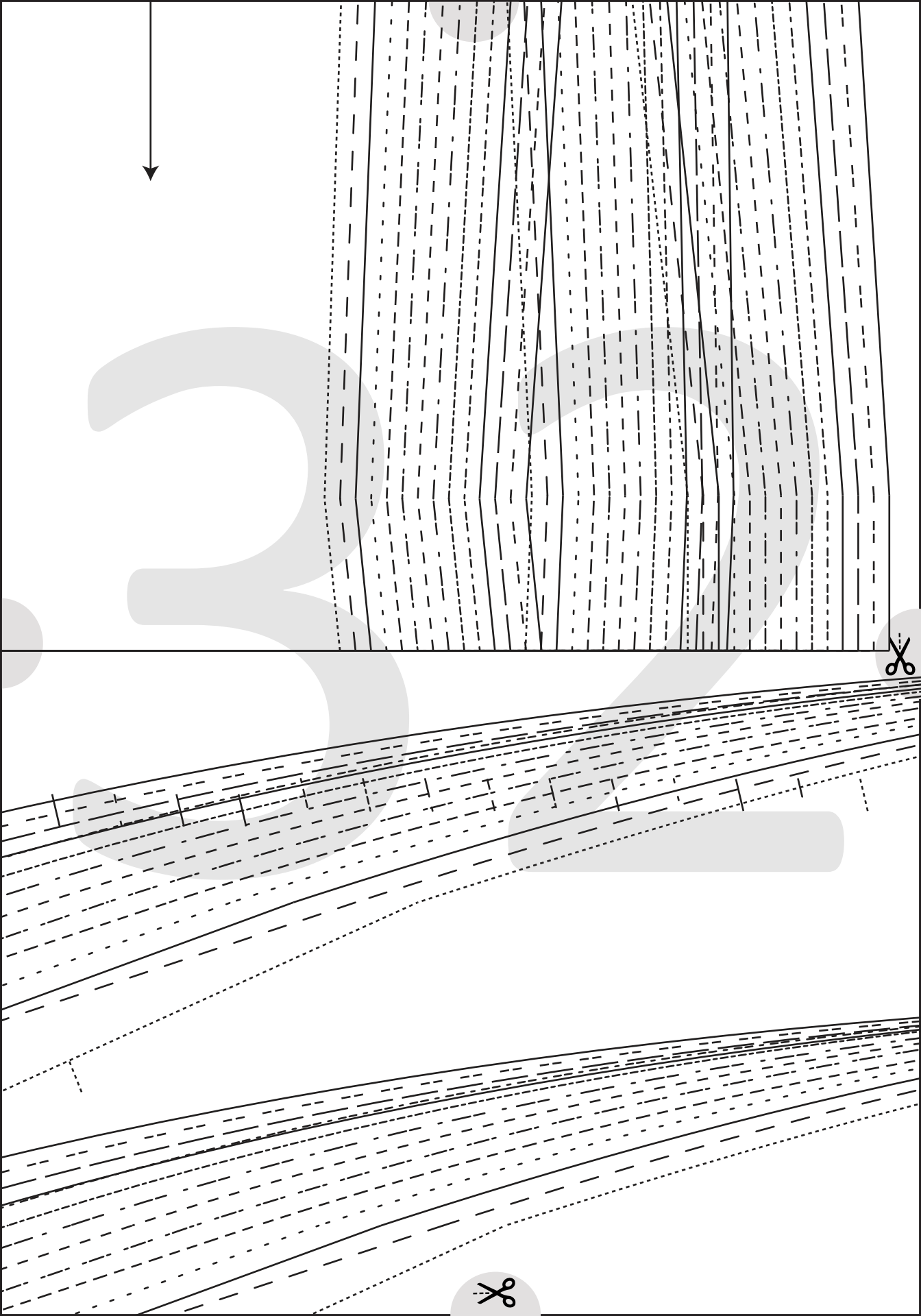
30

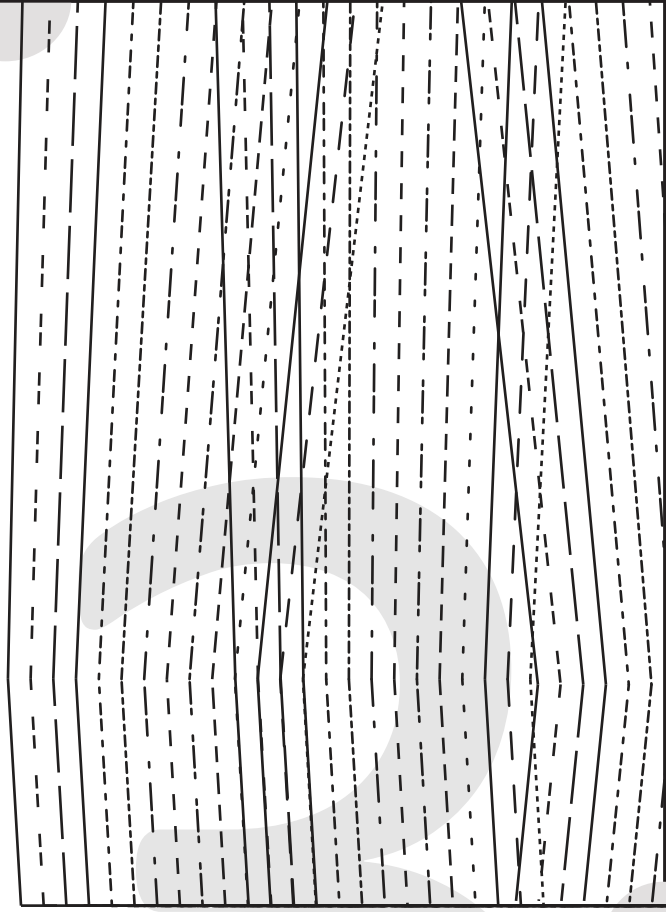




3 cms (1 1/4") HEM ALLOWANCE







(Seam allowances will vary dependant on the sewing step. Please refer to page in the sewing instructions titled "seam allowances". Also the relevant seam allowance is also noted at the beginning of each sewing step)

CUT 1 INTERFACING

CUT 2 MAIN

WAISTBAND

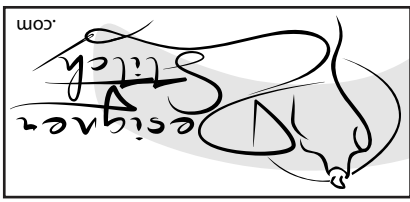
9

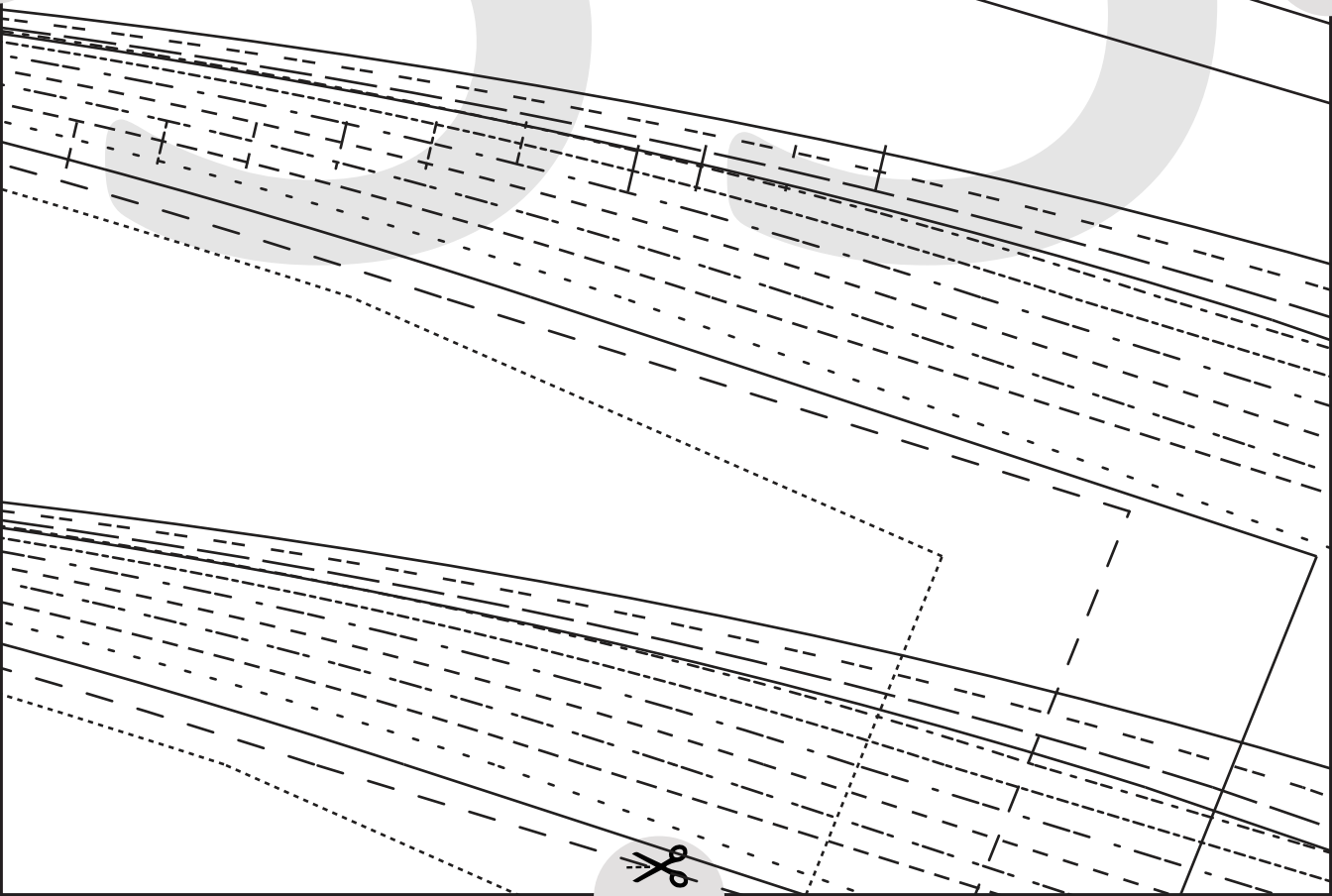
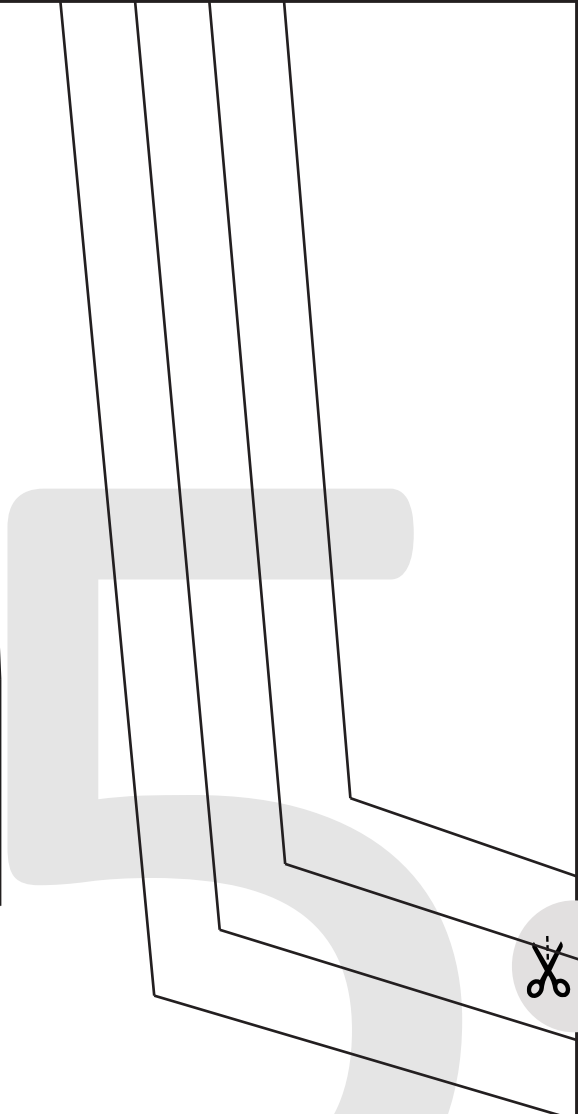
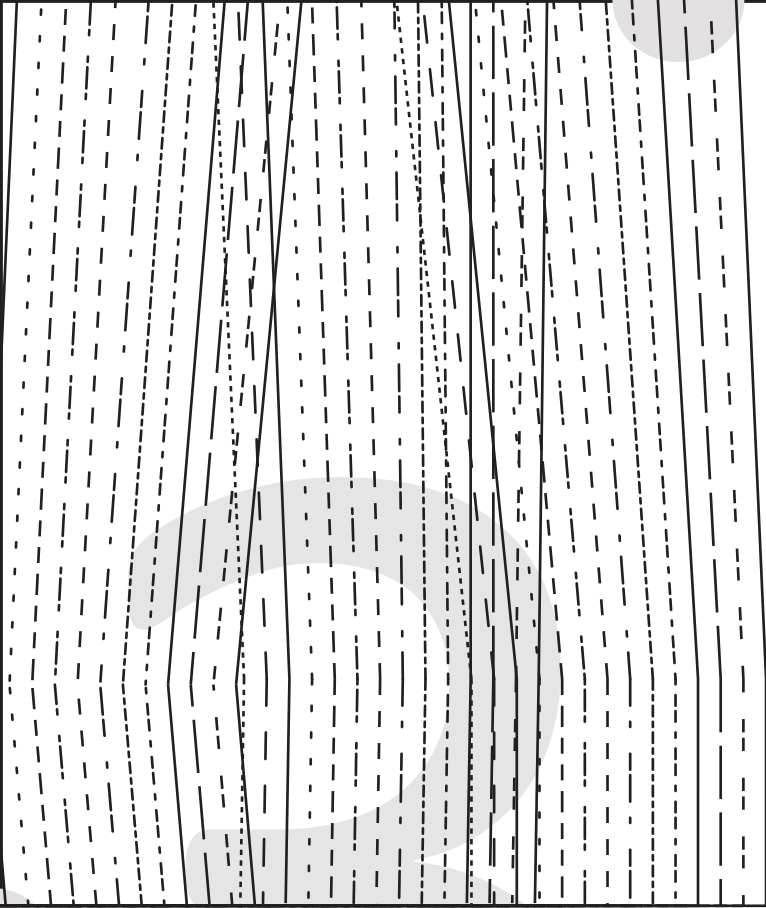
#0623

PEYTON JEANS



3 cms (1 1/4") HEM ALLOWANCE





PEYTON JEANS

#0623

11

POCKET STYLE 2

CUT 1

(Seam allowances will vary dependant on the sewing step. Please refer to page in the sewing instructions titled "seam allowances". Also the relevant seam allowance is also noted at the beginning of each sewing step)

SIZES 1 - 3

SIZES 4 - 7

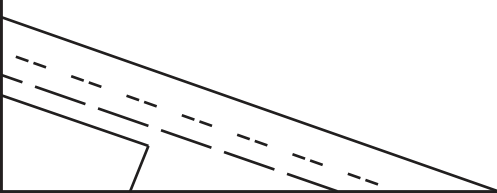
SIZES 8 - 10

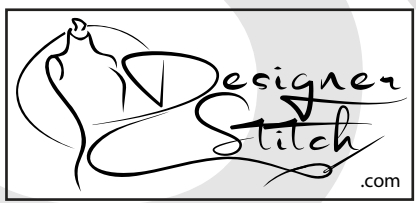
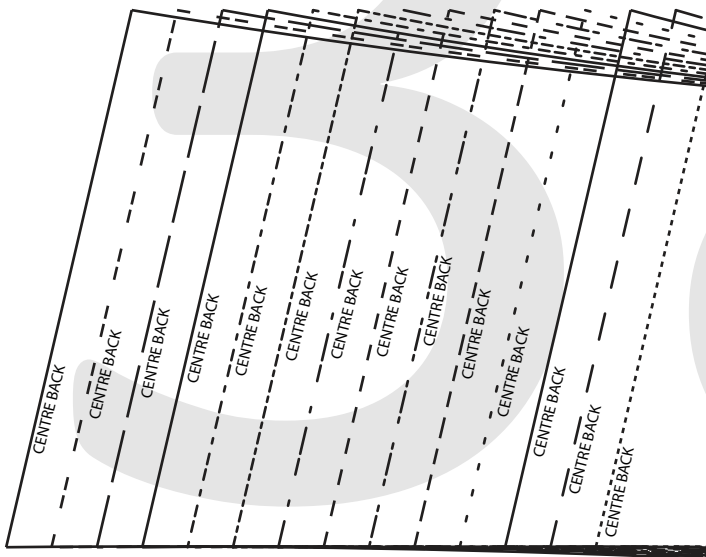
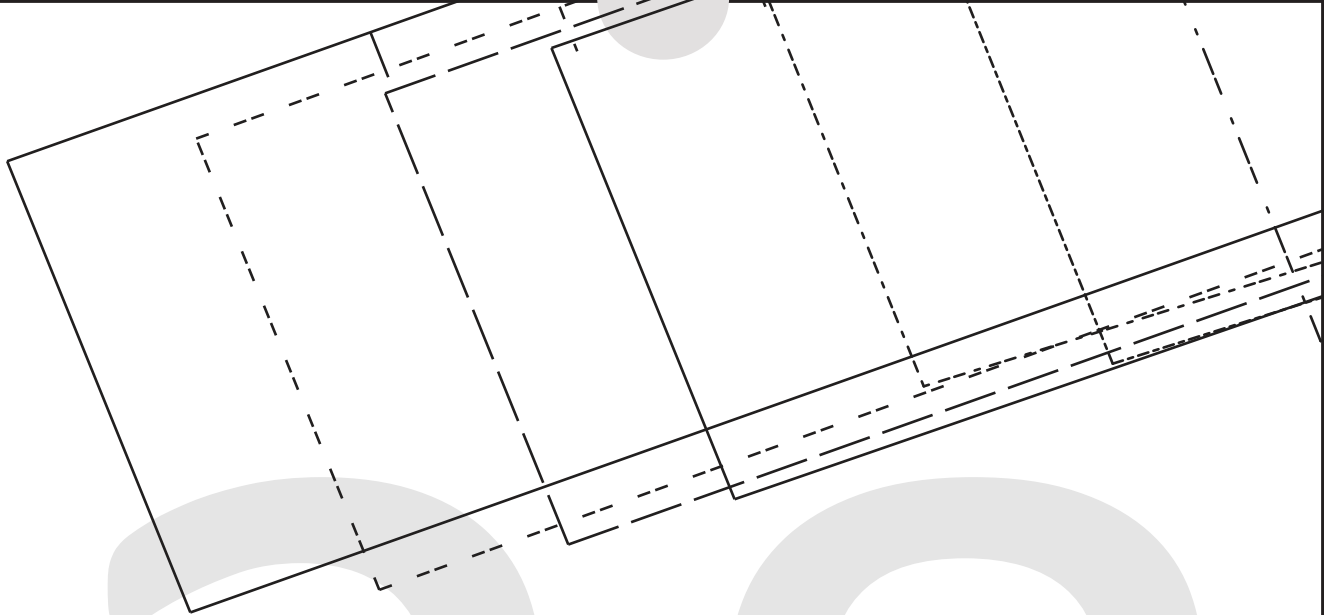
SIZES 11 - 14



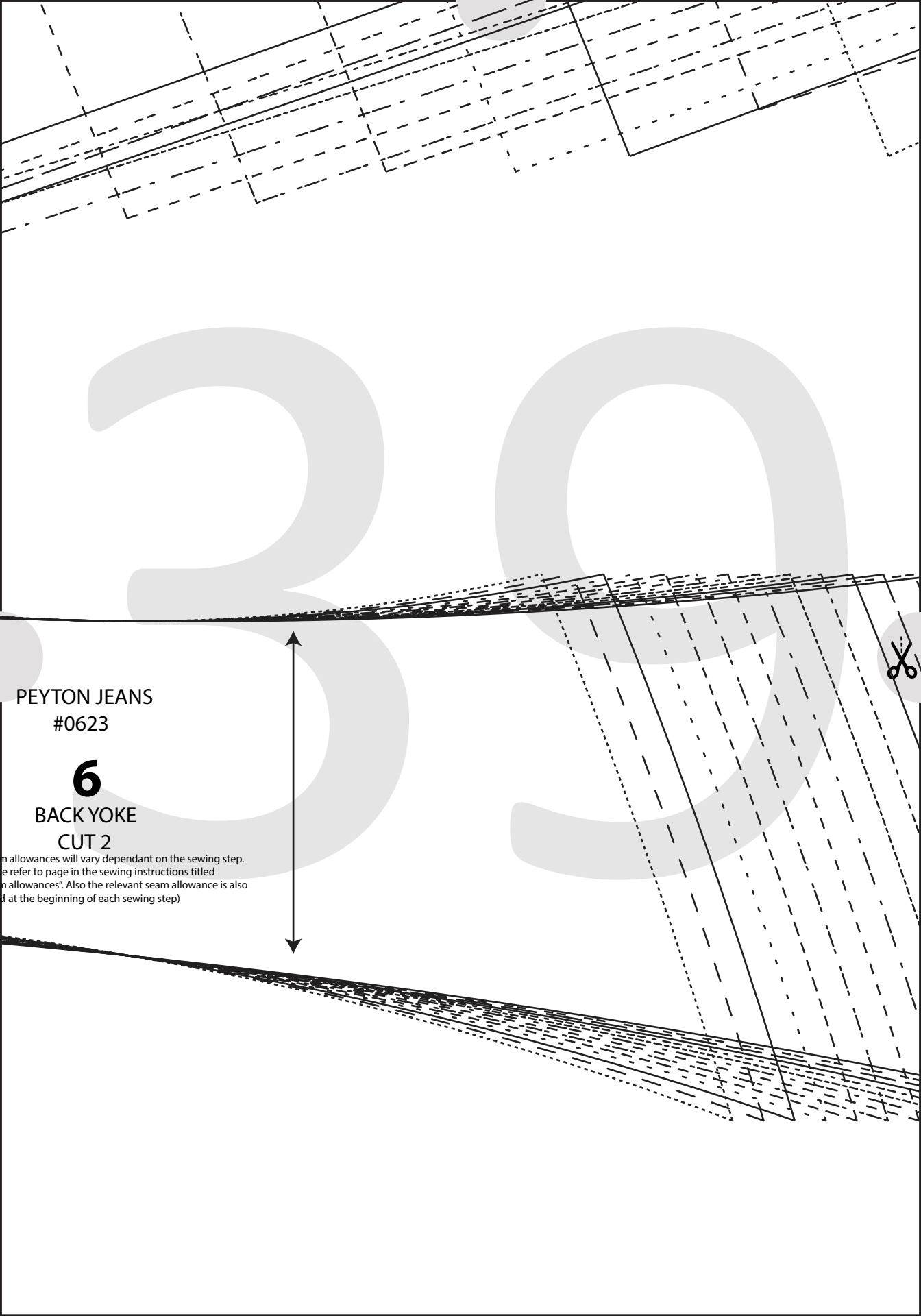
3

7





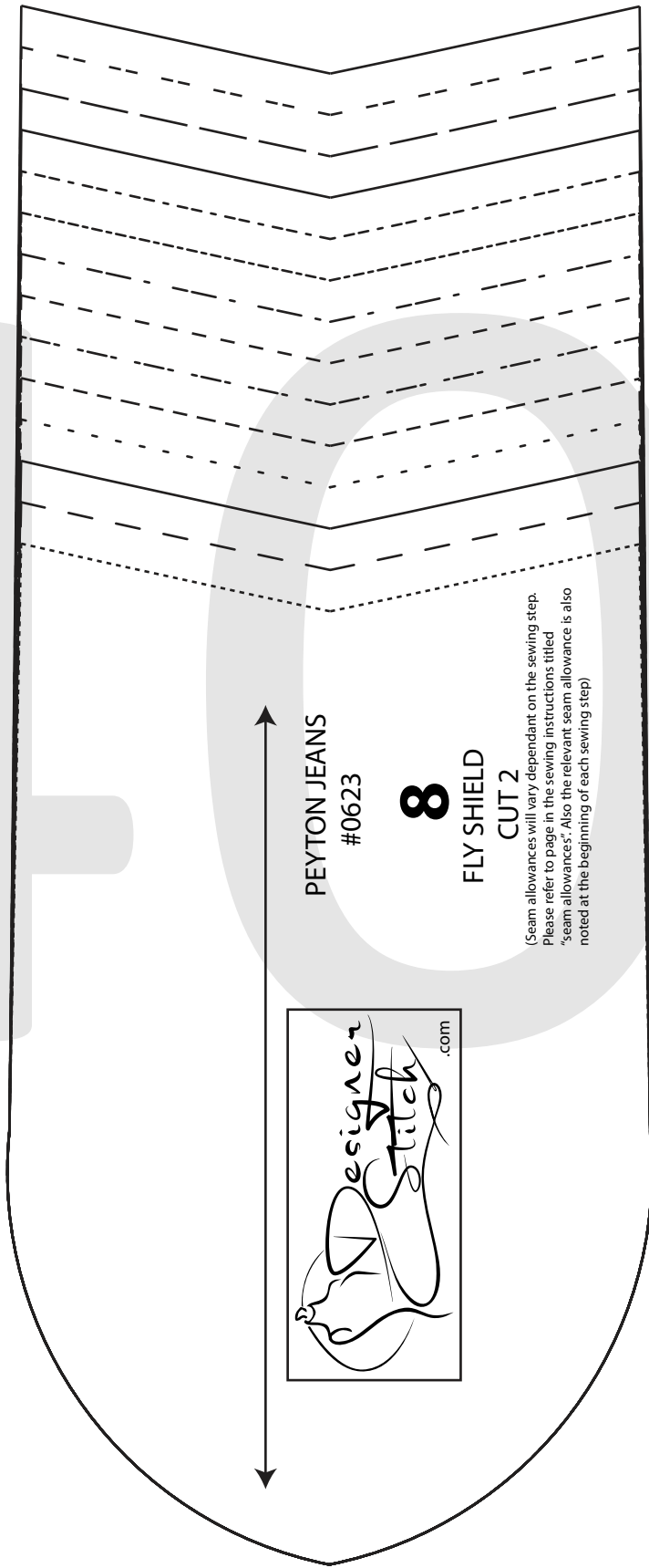
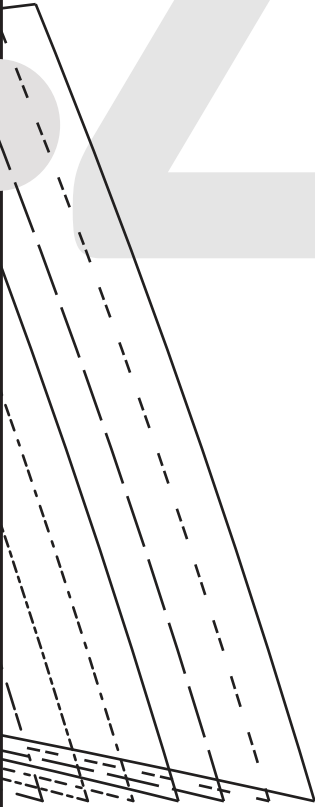
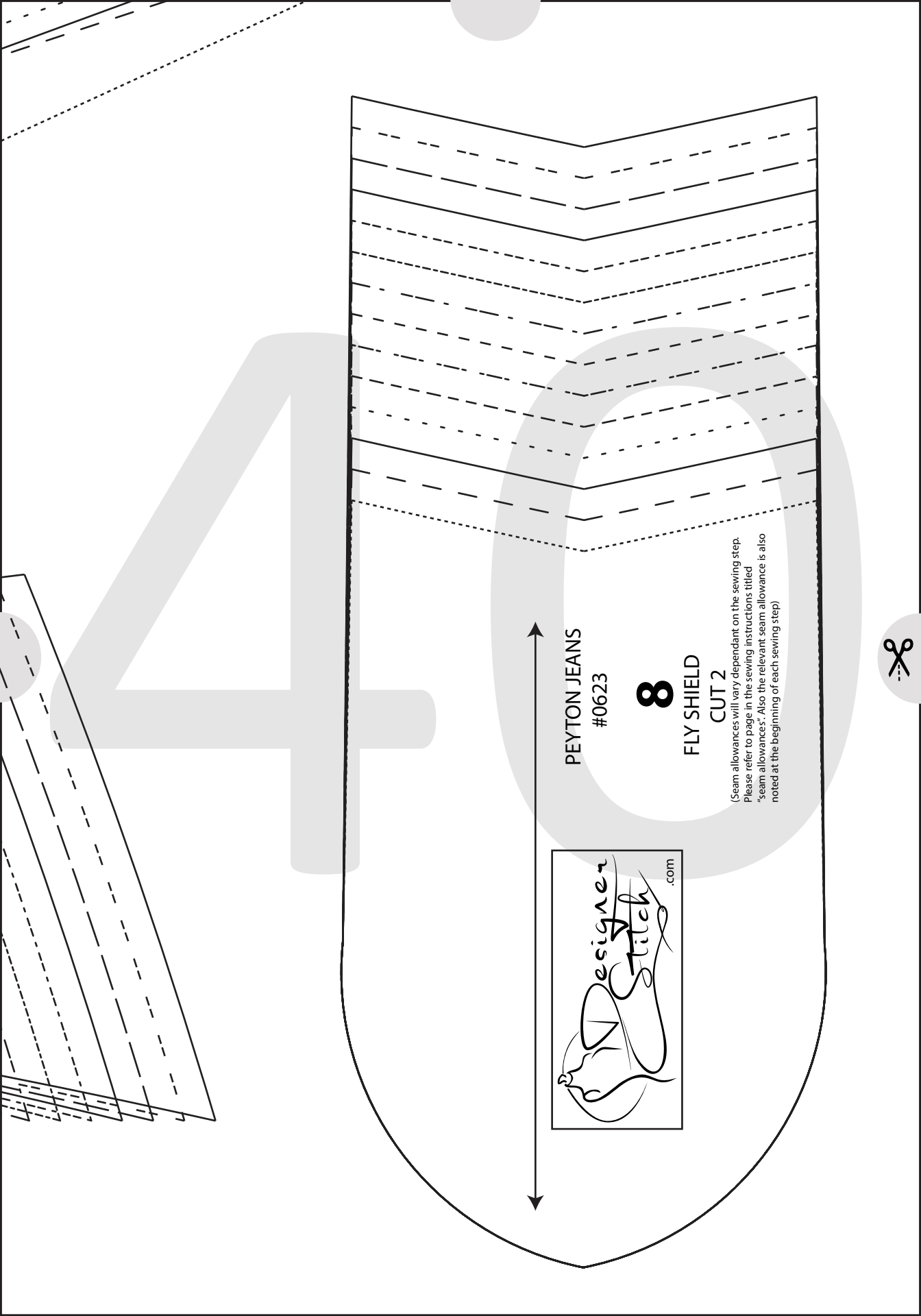
(See
Plea
"sea
note



PEYTON JEANS
#0623

6
BACK YOKE
CUT 2

(seam allowances will vary dependant on the sewing step.
Please refer to page in the sewing instructions titled
"seam allowances". Also the relevant seam allowance is also
indicated at the beginning of each sewing step)



PEYTON JEANS
#0623

8

FLY SHIELD
CUT 2

(Seam allowances will vary dependant on the sewing step.
Please refer to page in the sewing instructions titled
"seam allowances". Also the relevant seam allowance is also
noted at the beginning of each sewing step)



PEYTON JEANS
#0623

5

POCKET SHIELD
CUT 2

(Seam allowances will vary dependant on the sewing step.
Please refer to page in the sewing instructions titled
"seam allowances". Also the relevant seam allowance is also
noted at the beginning of each sewing step)





PEYTON JEANS
#0623

7

FLY FACING
CUT 2

(Seam allowances will vary dependant on the sewing step.
Please refer to page in the sewing instructions titled
"seam allowances". Also, the relevant seam allowance is also
noted at the beginning of each sewing step)



PEYTON JEANS
#0623

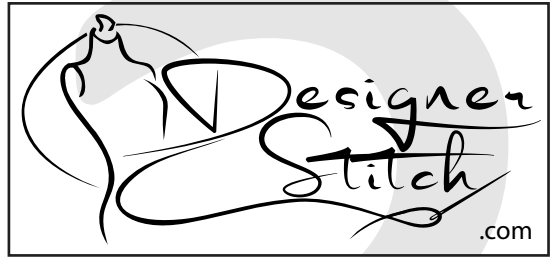
4

POCKET FACING
CUT 2

(Seam allowances will vary dependant on the sewing step.
Please refer to page in the sewing instructions titled
"seam allowances". Also the relevant seam allowance is also
noted at the beginning of each sewing step)



towards CB side



PEYTON JEANS
#0623

11

POCKET STYLE 3
CUT 1

(Seam allowances will vary dependant on the sewing step.
Please refer to page in the sewing instructions titled
"seam allowances". Also the relevant seam allowance is also
noted at the beginning of each sewing step)

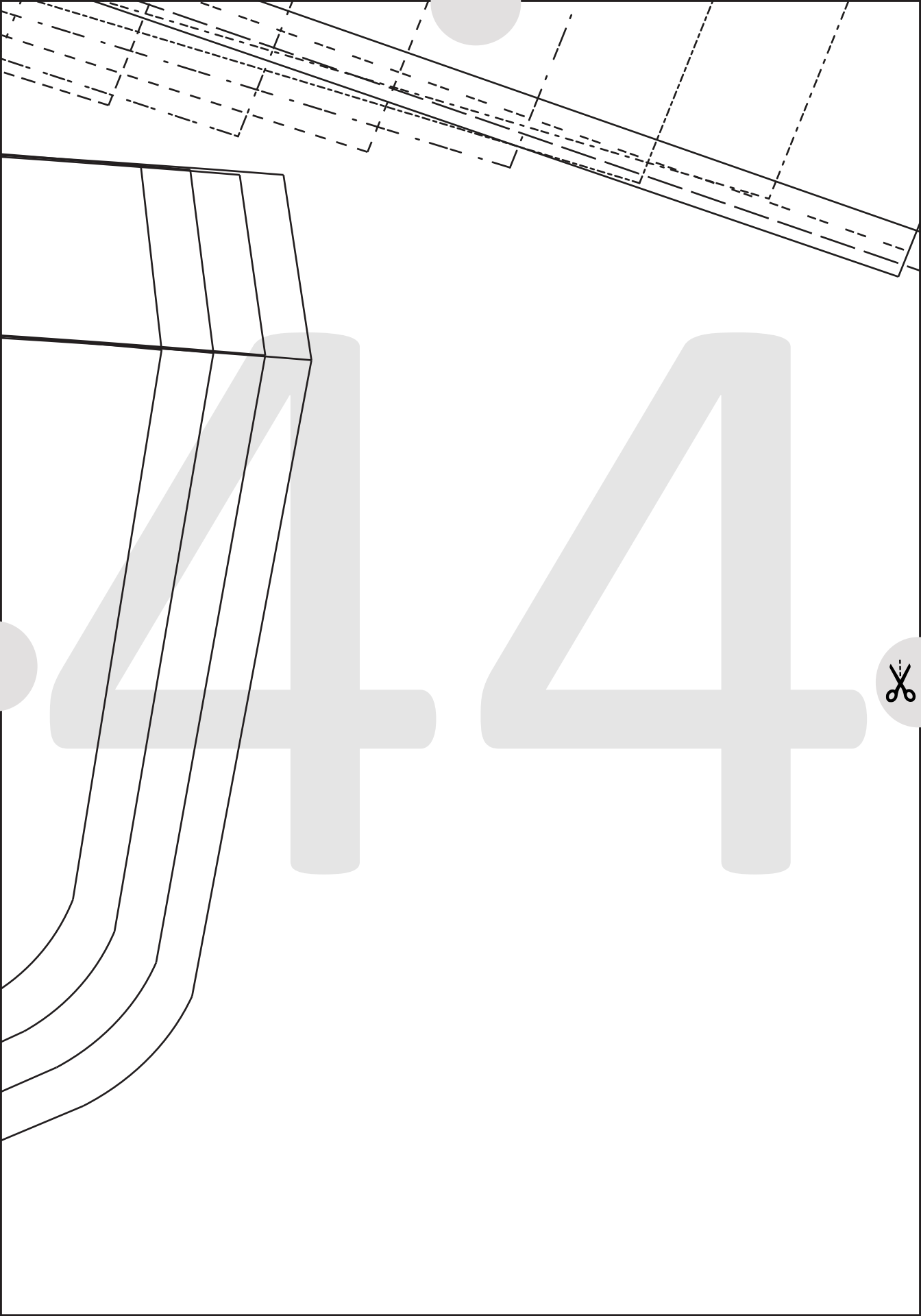
SIZES 1 - 3

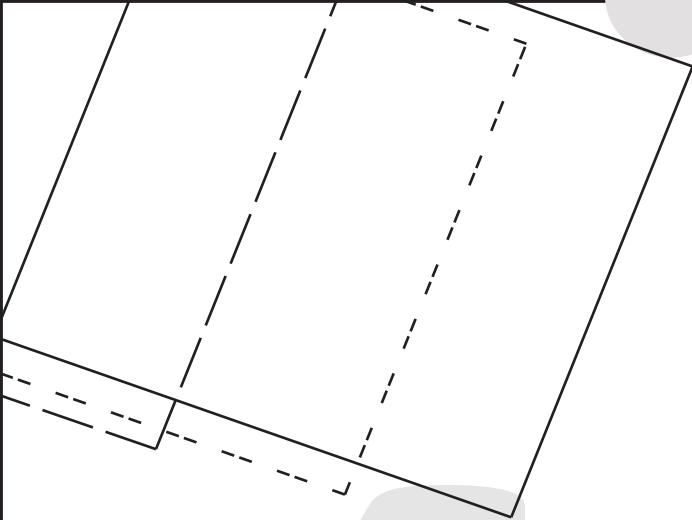
SIZES 4 - 7

SIZES 8 - 10

SIZES 11 - 14







45